

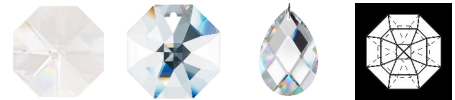
elegant lighting



STERLING

In the eighteenth century advances in glassmaking techniques and the demands of rich patrons made all-glass chandeliers the ultimate statement of class. Sterling, an all-crystal chandelier with hand-formed crystal arms and finely cut pendants, column and dishes, is the ultimate illustration of historical chandeliersâ dazzling by light.â

OPTIONS



Spectra Crystal (A), Crystals From Swarovski (S), Heritage Crystal (H), Rock Crystal Clear (R)



-40, -211

SPECIFICATIONS

Type:	Chandelier
↔ Width/Length:	25in / 64cm
↕ Height:	26in / 66cm
↓ Chain Length:	40in / 102cm
⬇ Hang Weight:	16lbs / 7.2kg
Tier Count:	1
Bulb Count:	7
Bulb Info:	(7) E12, 60 MAX, B10**
Voltage:	110V / 220V / CCC

*Bulb Included **Bulb Not Included