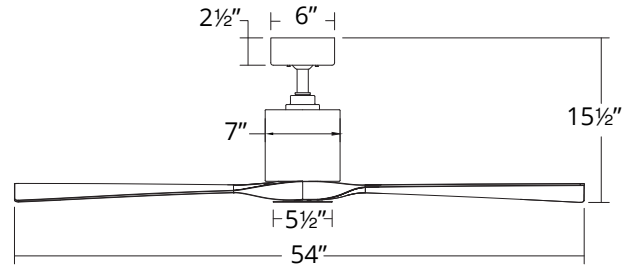


AVIATOR

54" Ceiling Fan

elegant
lighting

SMART FANS



PRODUCT DESCRIPTION

Inspired by the golden age of flying, this smart fan takes technology to the next level. Pair it with the exclusive Modern Forms app to save on energy costs and intuitively create schedules that adapt to your behavior. Two simulated wood finishes contrast with the matte black or graphite housings for an understated look in interior or exterior spaces. Available option LED light kit sold separately.

FEATURES

- 6 fan speeds through both Summer and Winter Modes
- Silent DC motor
- Optional LED luminaire sold separately (F-1811-LED-**)
- Includes BT remote control
- Optional wall control sold separately
- Compatible with Modern Forms app

AIRFLOW/ENERGY EFFICIENCY

Weighted-Average/High Airflow CFM:	4653/7030
Weighted-Average/High Energy Use (W):	24/32
Estimated Yearly Energy Cost (\$):	6
Weighted-Average/High Efficiency (CFM/W):	200/209
Max RPM:	145

WIRELESS PERFORMANCE

Wi-Fi Range:	Up to 150 ft*
Bluetooth Range:	Up to 150 ft*

ORDER NUMBER

Model	Housing	Blade
#71291	GH Graphite MB Matte Black MB Matte Black	WG Weathered Gray DK Distressed Koa MB Matte Black

SPECIFICATIONS

Construction:	Aluminum, ABS
Blade:	13° Pitch, 54" sweep
Downrod:	.75"W x 4.5"H included
Mounting Slope:	Up to 30°
Wire:	80"
Hanging Weight:	13 lbs
Total Power:	32W
Standards:	UL/cUL Wet Location listed, Title 24 JA8-2016 Compliant, Title 20, Energy Star rated
Motor Type:	125 x 20 sensorless DC motor

LUMINAIRE PERFORMANCE

Light Wattage:	13W
Lumens/Delivered Lumens:	1600/887
Dimming:	Integrated
CRI:	90
Color Temperature:	3000K (2700K/3500K options available)
Rated Life:	50,000 hours

OPTIONAL LUMINAIRE (Sold Separately)

Model	Finish
	GH Graphite MB Matte Black

*Results may vary based on application and surroundings.
*This fan comes uni-pack - blade select options are not available

