

**PRODUCT DESCRIPTION**

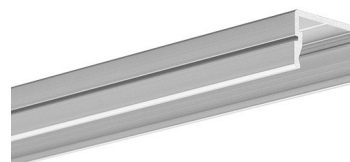
Fixture Certified to NSF 2 standards  
when assembled by KLUŚ

**Closet Rated**

- Will accommodate LEDs up to 0.55" / 14.6 mm wide
- ETL listed and approved for installation in all closet storage areas when factory built by KLUŚ as fixtures with 4.5w/ft or less
- Designed to reach an IP67 waterproof rating

FINISH :

Silver anodized ☐



Fill empty fields

Product nr.	
Fixture type	
Company	
Job name	
Date	

**TECHNICAL SPECIFICATION****Application**

- for the construction of watertight lighting fixtures, for external use. For example, to highlight elements of building facades, elements of street furniture, to illuminate garage driveways, etc.

**Assembly**

- with fixing glues, professional double-sided adhesive tapes
- with mounting brackets 45

**Additional information**

- frosted cover and aluminum-colored plastic end caps are available for this extrusion

Possibility of making a linear fixture with IP67 protection, which means the fixture is dustproof and waterproof.