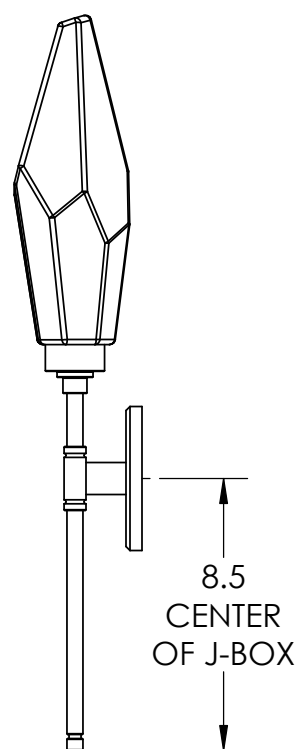
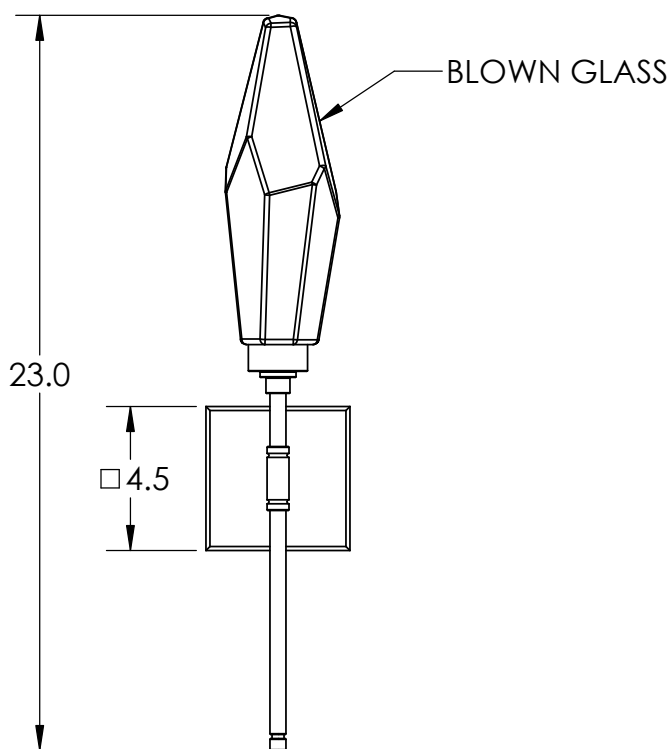
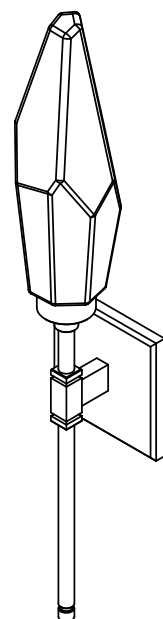
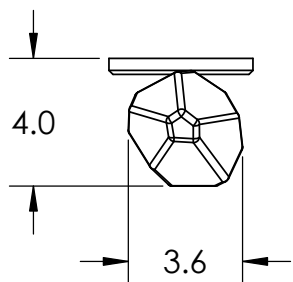


# SPECIFICATION DRAWING

Collection: Rock Crystal

elegant  
lighting

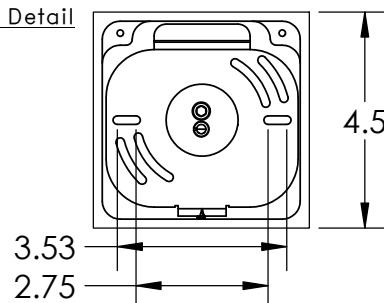


**\*\*NOTE\*\***  
DRIVER TO BE INSTALLED IN JUNCTION BOX.  
MINIMUM SIZE J-BOX REQUIRED IS  
4" L X 4" W X 1.5" D

10/25/2017 (A)

Mounting Packet: U	Weight(lbs.): 4	Electrical Type: LED	CCT: 2700 K
UL Location: DRY	Elec. Qty: 1	Wattage: 5.2	Voltage: 120
Finish: SEE WEB SITE FOR OPTIONS	Source Lumens: Up: 340	Down: N/A	
Top Diffuser: CLOSED GLASS	Dimmable: Forward/Reverse Phase or 0-10V To 1%		
Bottom Diffuser: CLOSED METAL	CRI: 93+	Power Factor: >0.9	
All fixtures are handcrafted by artisans. Dimensions may vary up to 7/8".			

Mounting Detail



MOUNTS DIRECTLY TO J-BOX