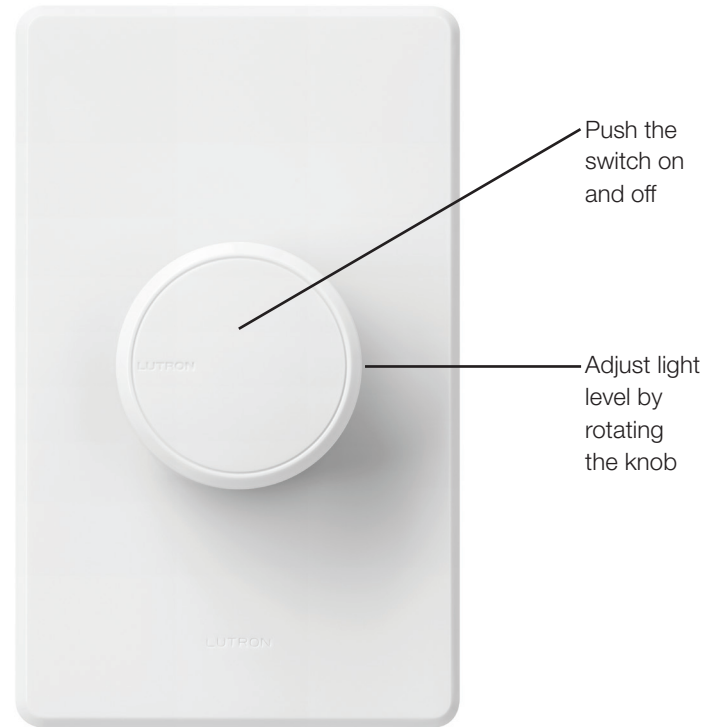


Dalia LED+ Dimmer

Dimmer for dimmable LED, Halogen, Incandescent, and CFL bulbs.

Features

- Push on/push off rotary knob with locator light for a traditional wallplate opening
- LED+ Technology: Advanced Lutron dimming circuitry designed for compatibility with most high-efficacy light bulbs
- UL Listed to control:
 - Dimmable LED with integrated driver
 - Halogen
 - Incandescent
 - Dimmable compact fluorescent lamps (CFL) with integrated ballast
- Low-end adjustment to accommodate a wide range of bulbs
- 100% factory tested
- Locator light features a soft glow to help you find the dimmer in the dark



* FW-1-xx¹ wallplate sold separately

Application Requirements

- ***When dimming LEDs, only bulbs marked or rated as DIMMABLE may be used.***
- To access our mobile friendly online tool of DIMMABLE LEDs visit www.lutron.com/LEDfinder

Model Numbers

RCL-153PNL-XX^{1, 2, 4} Single pole/3-way with locator light³

¹ "XX" in the model number represents color/finish code; see **"Colors and Finishes"** chart on next page.

² For clamshell packaging, add "H" after "153PNL".

³ For 3-way and 4-way switching, use Claro switches or other mechanical switches.

⁴ Add "C" for Canada.

Job Name:	Model Numbers:
Job Number:	