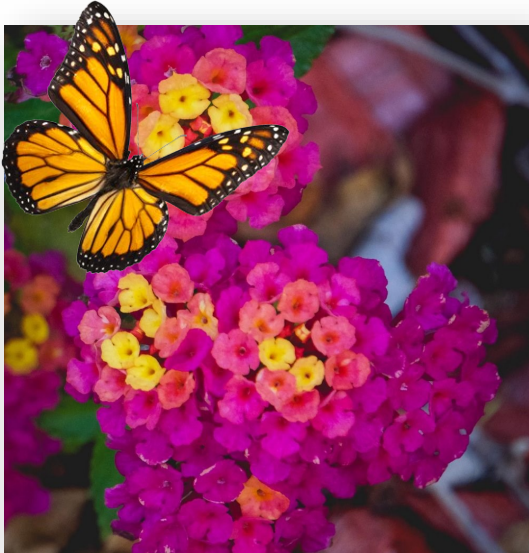


Lantana

Container Use: Filler/Spiller



4 + Hours



Size: 1' - 2' Tall 3' - 4' Wide

Lantana is a heat loving annual with bright flowers ranging from yellow, orange, pink, red, purple, and loads of bi-color varieties. This fragrant annual attracts Butterflies, Hummingbirds, and Pollinators. Deadheading will ensure prolific blooming throughout the season. **Lantana is considered toxic to pets.**

