

www.nobleliftna.com

NOBLELIFT
NORTH AMERICA

LITHIUM

CBT33-40 SERIES

3,300-4,000 lbs. Capacity
Stand-Up Counterbalance Forklift



Why choose between price and quality **WHEN YOU CAN HAVE BOTH!**

HIGHLIGHTS

- ▶ American Curtis Intelligent Computer Control system
- ▶ Dual independent AC drive motors with separate drive controllers
- ▶ 36V fully electric AC system
- ▶ Lithium battery: 36V/560Ah
- ▶ Charger: 36V/200A
- ▶ Fast charging 2.5 hours
- ▶ Large capacity battery provides multiple shift operation.
- ▶ German ZF GP25 gearbox
- ▶ On-board Curtis self-diagnostics
- ▶ Large LED display: lifting weight, lifting height, speed, power, steering, fault code, alarm and more.
- ▶ Integrated multi-task control
- ▶ Proportional lift for accurate control of the lift height
- ▶ Fork tilt leveling
- ▶ Side shifter
- ▶ Travel speed: 6.8mph (unloaded), 6.8mph (loaded)
- ▶ Speed reduction in turns



CBT33-40 SERIES

3,300-4,000 lbs. Capacity
Stand-Up Counterbalance Forklift

The CBT33-40 Series Lithium Stand-Up Counterbalance Forklifts are designed for indoor applications where the operator needs to get on and off the vehicle frequently. Engineered for reliability and performance, these forklifts offer exceptional visibility, ensuring precision and safety in a variety of applications from loading trailers to navigating through busy warehouse aisles. Boost your productivity with these highly maneuverable, very low maintenance, ultra-smooth, lithium forklifts.

COMPACT AND HIGHLY PRODUCTIVE FORKLIFT



SUPERIOR DESIGN AND PERFORMANCE



Automatic decelerating while turning, improves safety, stability and operator comfort, while preventing product damage.

360°

Zero Turning
Radius

Small turning
radius compared
to sit-down
forklifts.

55.4" (CBT33)

63.4" (CBT40)



Dual independent
AC drive motors
with separate
drive controllers
provide superior
maneuverability while
turning.

AC drive and German
gearbox technology
ensure accurate
control and travel
speed.



INTELLIGENT. PRODUCTIVE. CONVENIENT.



Multi-functional handle controls key vehicle functions – forward/backward travel speed, side shifting and proportional lifting and lowering.



One-button tilt control system ensures safety by limiting the tilt of cargo when forks are lifted high.



Ergonomic compact steering wheel with knob provides comfortable and effortless operation.



Adjustable backrest and hip pad contour the body to ensure operator comfort throughout the entire work shift.



Armrest can be adjusted to maximize the comfort of operators of different heights.



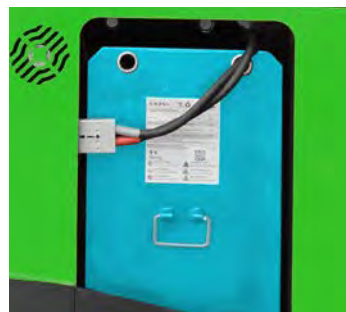
The floor suspension system adapts to the weight of the operator and provides impact and vibration protection.



INTELLIGENT. PRODUCTIVE. CONVENIENT.



Large LED screen conveniently displays lifting weight, lifting height, speed, power, steering, fault code, alarm and more.



Large capacity battery for multiple shift operation. Side extraction reduces maintenance time.



A low step height and a wide entry is ideal for operators who are frequently getting on and off the forklift.



USB connector for charging and powering of additional devices during operations.

CAN-bus



CURTIS

Easily check condition and troubleshoot with Curtis controller and CAN-bus technology.

INTELLIGENT. PRODUCTIVE. CONVENIENT.

Angled columns, overhead guard design and open view mast give operator's a clean line of site to the load and their surroundings for increased efficiency and improved safety.

CBT
SERIES

NOBLELIFT



RELIABILITY AND SAFETY



Dual-brake/presence pedal design protects the operator and the forklift. If both pedals are not depressed, the forklift will not travel in any direction.



Equipped with LED headlights, safety blue light and a buzzer for safe driving.



Emergency power button cuts off the power in emergency situations to protect the operator and the cargo.



LONG LASTING AND SAFE LITHIUM POWER

NOBLELIFT uses Lithium-Iron Phosphate batteries, the longest lasting and safest lithium battery available. Our lithium batteries are equipped with a Battery Management System (BMS), thermal management system, and an automotive-grade DC high-voltage control system. BMS manages charging and discharging data to ensure safety throughout its life cycle.

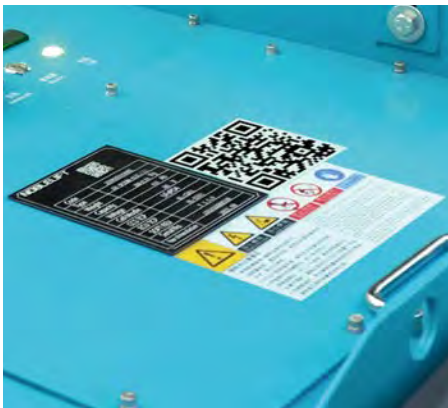


CBT33 Stand-Up Forklifts have a 5 year or 10,000 hours warranty on the lithium battery cells.

ADVANTAGES OF LITHIUM POWER

LITHIUM BATTERY ADVANTAGES

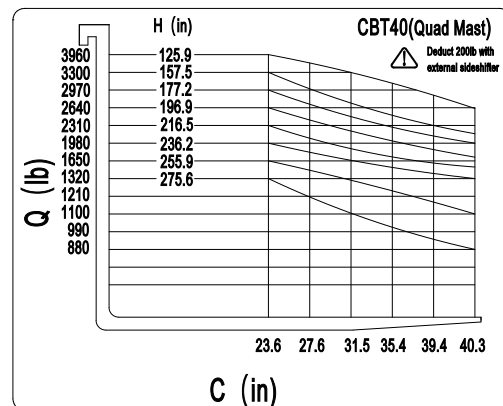
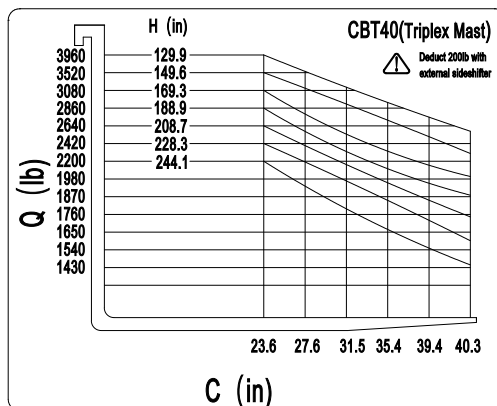
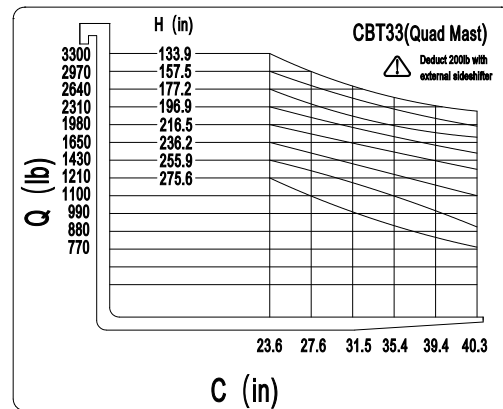
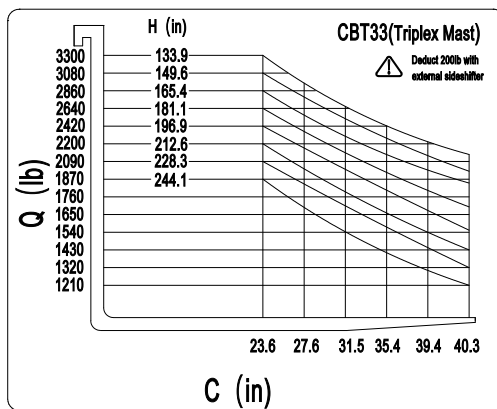
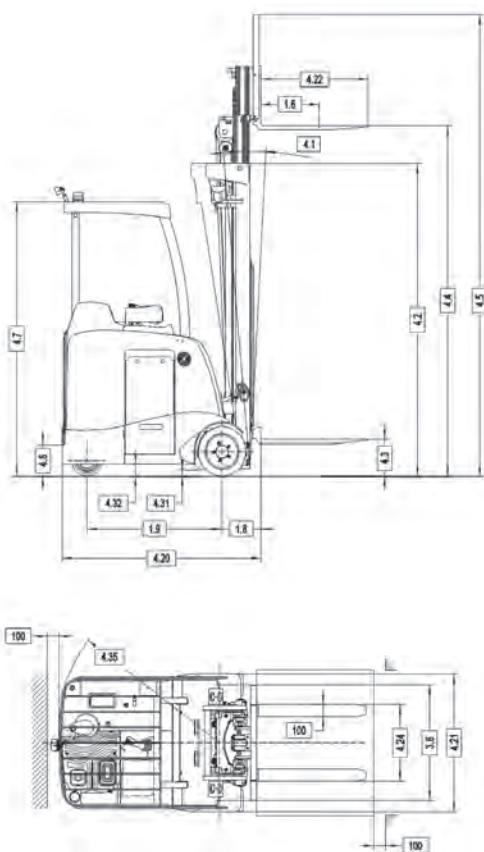
Fast-charging maintenance-free Lithium battery is fully charged in 2.5 hours. Battery can be opportunity charged during user breaks and during shift changes which allows the truck to run continuously through multi-shift operations. No battery changes are necessary.



Wireless 4G battery monitoring allows for remote battery programming and troubleshooting.

Lead-Acid Battery		Lithium Battery
Lower fleet availability - Work is interrupted because battery needs to be fully charged before next use	Productivity - Memory Effect 	100% Fleet availability - Opportunity charging allows battery to be charged in between use
Periodic battery replacement	Service Life 	Batteries last 3 times longer and do not need to be replaced
Outsourced or in-house maintenance personnel required	Ongoing Maintenance 	No maintenance cost
8-10 Hours - 2 or more batteries per lift truck	Charge Duration 	2.5 Hours - 1 Battery per lift truck
Build an expensive battery room with ventilation	Battery Room 	No battery room needed
Releases hydrogen while charging - Can result in explosion - Acid burns can happen during maintenance	Dangerous Substances 	No dangerous substances
Power loss	Power Savings 	No power loss - Reduces energy consumption by 35%

Warehouse and logistics
Food storage
Manufacturing
Distribution
Transportation
Containers
Retail
Short-term rentals



Mast Table CBT33-40							
Designation	Lift height h3 (in)	Free lift height h2 (in)	Closed mast height h1 (in)	Extended mast height h4 (in)	Tilt forward/ backward a/b (°)	Capacity table (lb) C=24in without sideshift single cushion tires	
						CBT33	CBT40
Triplex Mast	157	36	72.4	193.5	3.5 / 5.5	2,974	3,348
	189	47	83.1	225.4	3.5 / 5.5	2,533	2,863
	207	53	89	243.1	3.5 / 5.5	2,313	2,665
	225	59	95.1	261.3	3.5 / 5.5	2,115	2,445
	244	65	101.4	280.2	3.5 / 5.5	1,872	2,203
Quad Mast	236	50	86.1	272.1	3.5 / 5.5	1,652	1,982
	256	54	90.7	291.8	3.5 / 5.5	1,432	1,652
	276	59	95.2	311.5	3.5 / 5.5	1,211	1,322

Side shifter - reduce 200lbs for loading capacity.

Identification				
1.2	Model		CBT33	CBT40
1.3	Drive (electric, diesel, petrol, fuel gas, manual)		Lithium electric	
1.4	Type of operation (hand, pedestrian, standing, seated, order picker)		Stand-up forklift	
1.5	Load capacity	lb	3,300	4,000
1.6	Load center, fork face to load CG	c (in)	19.7	
1.8	Load distance, center of wheel to face of forks	x (in)	13	15
1.9	Wheel base	y (in)	45.6	49.8
Weights				
2.1	Service weight (with battery)	lb	9,361	10,175
2.2	Axle load, with max. battery, unladen front	lb	5,027	5,555
	Axle load, with max. battery, unladen rear	lb	4,334	4,620
Wheels, Chassis				
3.1	Tires (solid rubber, superelastic, pneumatic, polyurethane)		Pressed solid tire	
3.2	Tire size, load side	in	Ø 16 x 7 x 10.5	
3.3	Tire size, power unit side (steer)	in	Ø 10 x 5 x 6.5	
3.5	Wheels, number front / rear (x = driven wheels)		2x/2	
3.6	Tread, load side	b ₁₀ (in)	37.5	
3.7	Tread, power unit side	b ₁₁ (in)	6.7	
Basic Dimensions				
4.1	Tilt, forward / backward	deg	3.5 / 5.5	
4.2	Lowered mast height	h ₁ (in)	101.4	
4.3	Free lift, with / without load backrest	h ₂ (in)	65	
4.4	Lift height	h ₃ (in)	244	
4.5	Extended mast height, with / without load backrest	h ₄ (in)	280.2	
4.7	Overhead guard height, standard	h ₆ (in)	89	
4.8	Standing platform height	h ₇ (in)	10.2	
4.20	Headlength	l ₂ (in)	66.9	75.2
4.21	Overall width, power unit side	b ₁ (in)	44.5	
4.22	Fork dimensions, standard	s/e/l (in)	1.4 / 3.9 / 36	1.6 / 4.7 / 36
4.23	Fork carriage, ISO FEM, ITA		2A	
4.24	Width across forks, min-max	in	7.9 - 33.9	9.5 - 33.9
4.31	Ground clearance, lowest point, below mast	m ₁ (in)	2	
4.32	Ground clearance, center wheelbase	m ₂ (in)	3.9	
4.33	Right Angle Stack with 40x48 pallet	Ast (in)	112.6	122.2
4.34	Right Angle Stack with 32x48 pallet	Ast (in)	117.5	127.1
4.35	Turning radius	Wa (in)	55.4	63.4
Performance Data				
5.1	Travel speed, laden / unladen	mph	6.8 / 6.8	
5.2	Lift speed, laden / unladen	ft/s	1.31 / 1.48	1.18 / 1.41
5.3	Lowering speed, laden / unladen	ft/s	1.48 / 1.38	1.44 / 1.2
5.10	Service brake		Foot-motor	
	Parking brake		Auto-electric	
E-Motor				
6.1	Drive motor rating, 60 min. rating	HP	2 x 7.4	
6.2	Lift motor rating, 15% on time	HP	14.8	
6.3	Max. battery size, DIN 43531/35/36 A, B, C, no	LxWxH (in)	16.1 x 38.6 x 30.9	20.1 x 38.6 x 30.9
6.4	Battery voltage, nominal capacity K5	V/Ah	36V/560Ah	
6.5	Battery weight, minimum	lb	1,984	2,508
Others				
8.1	Type of drive control		AC	

NOBLELIFT reserves the right to make technical changes and improvements to our products to maintain or enhance the quality, delivery, and efficiency.

A GLOBAL LEADER

NOBLELIFT is a global leader in Lithium Technology. We manufacture more than 200 categories and around 30 series of each product. Our products are designed to meet different application demands and are well accepted by our customers in more than 100 countries and regions in Europe, America, Asia, Africa and more.

Products include: sit-down forklifts, rough terrain forklifts, narrow aisle forklifts, walkie-stackers, order pickers, electric pallet trucks, scissor lifts, tuggers, tow tractors, scrubbers/sweepers, lift tables, manual pallet jacks and more.



FORKLIFTS



NARROW AISLE



STACKERS



POWERED PALLET TRUCKS



SCISSOR LIFTS



TUGGERS



SCRUBBERS

NOBLELIFT
NORTH AMERICA

2475 S. Wolf Road
Des Plaines, IL 60018
T: 847-595-7100
F: 847-595-7200
sales@nobeliftna.com
www.nobeliftna.com



Website



Video

AUTHORIZED DEALER

