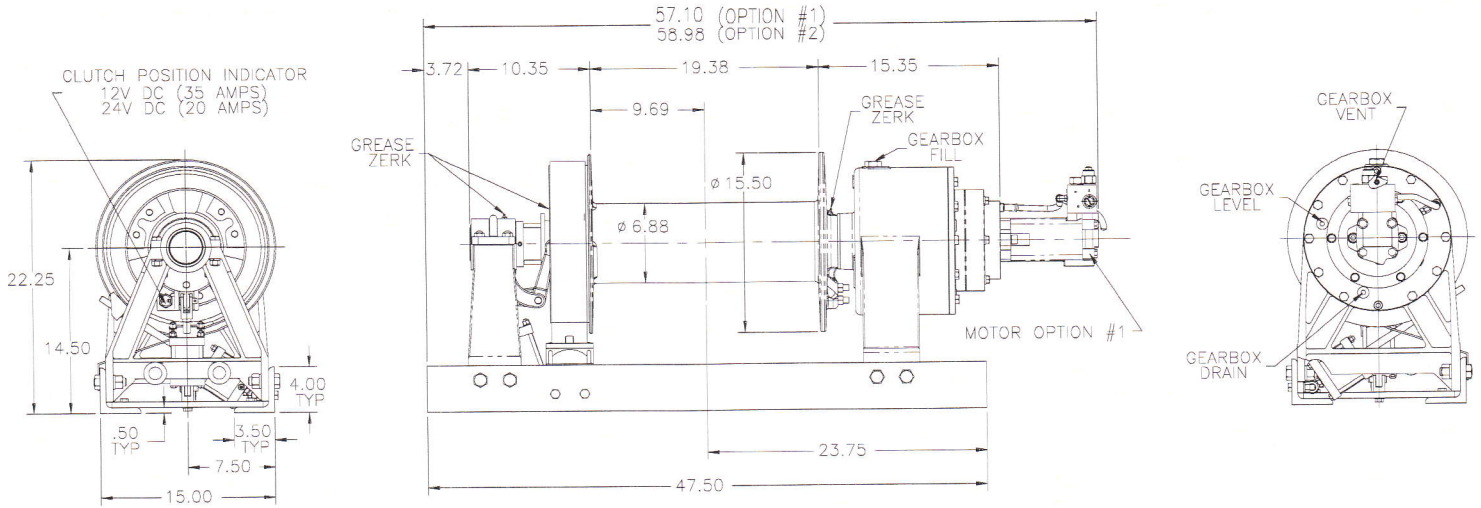




# Model 30P

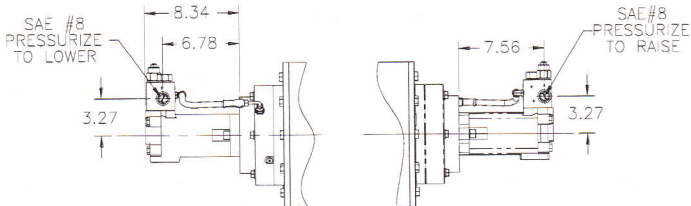
## 30,000 lb.



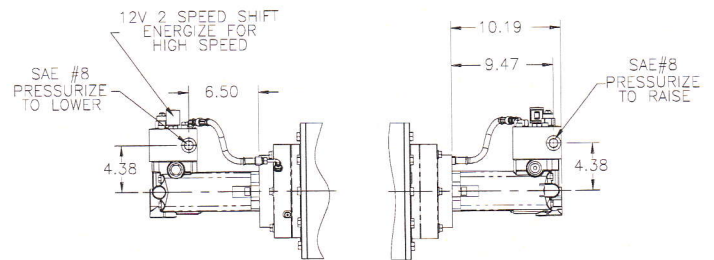
**WEIGHT**  
SINGLE SPEED: 690 lbs.  
2-SPEED: 700 lbs.

### OPTIONAL FEATURES

MOTOR OPTION #1  
SINGLE SPEED



MOTOR OPTION #2  
2-SPEED



Because of continued product improvement, we reserve the right to make changes without notice.

Tulsa Winch Group is a worldwide provider of winch systems and electronic load information systems.

|   |  |
|---|--|
| <b>⚠ WARNING</b>  | <b>⚠ CAUTION</b>   |
| Winches are not intended to be used for the lifting or moving of persons. | The last 5 wraps cable must be left on the drum to assist the cable clamp in holding the load. |

P.O. Box 1130  
Jenks, OK 74037-1130  
Voice: 918-298-8300  
Fax: 918-298-8301  
www.team-twg.com





# Model 30P

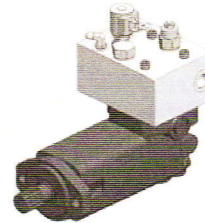
## 30,000 lb.



MOTOR OPTION #1 - SINGLE SPEED

| LAYER | LINEPULL (lbs) | LINE SPEED (fpm) |
|-------|----------------|------------------|
| 1     | 30,000         | 29               |
| 2     | 25,794         | 34               |
| 3     | 22,569         | 39               |
| 4     | 20,062         | 44               |
| 5     | 18,055         | 49               |
| 6     | 16,414         | 54               |

Performance is based on 30 gpm @ 2500 psi  
With  $\varnothing.625$ " wire rope.



MOTOR OPTION #2 - 2-SPEED

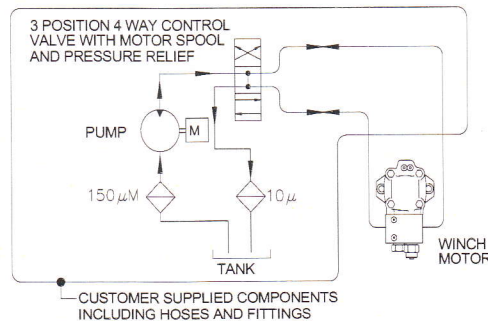
| LAYER | LINEPULL (lbs) |        | LINE SPEED (fpm) |      |
|-------|----------------|--------|------------------|------|
|       | LOW            | HIGH   | LOW              | HIGH |
| 1     | 30,000         | 15,046 | 29               | 59   |
| 2     | 25,794         | 12,897 | 34               | 69   |
| 3     | 22,569         | 11,285 | 39               | 78   |
| 4     | 20,062         | 10,031 | 44               | 88   |
| 5     | 18,055         | 9,028  | 49               | 98   |
| 6     | 16,414         | 8,207  | 54               | 108  |

Performance is based on 30 gpm @ 2500 psi  
With  $\varnothing.625$ " wire rope.

DRUM CAPACITY - FT.

| LAYER | $\varnothing.625$ WIRE ROPE |
|-------|-----------------------------|
| 1     | 61                          |
| 2     | 132                         |
| 3     | 213                         |
| 4     | 304                         |
| 5     | 406                         |
| 6     | 517                         |

TYPICAL HYDRAULIC SYSTEM



Because of continued product improvement, we reserve the right to make changes without notice.

| <b>WARNING</b>  | <b>CAUTION</b>   |
|---|--|
| Winches are not intended to be used for the lifting or moving of persons. | The last 5 wraps cable must be left on the drum to assist the cable clamp in holding the load. |

Tulsa Winch Group is a worldwide provider of winch systems and electronic load information systems.

P.O. Box 1130  
Jenks, OK 74037-1130  
Voice: 918-298-8300  
Fax: 918-298-8301  
www.team-twg.com

