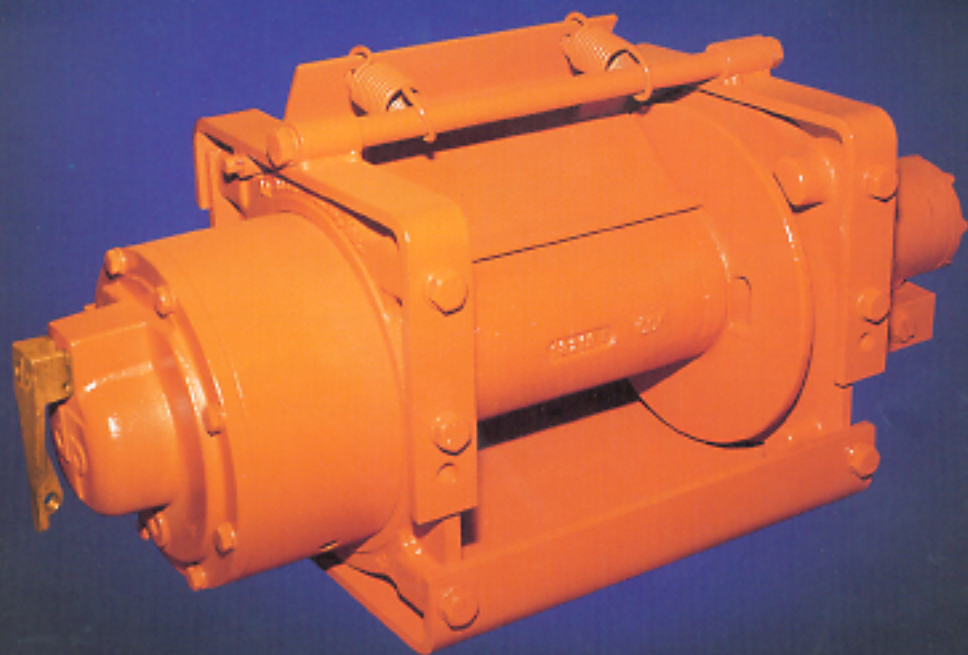


dp WINCH



Models 10J-12J 10,000-12,000 LB. **Dependable Performance/Compact Component Design**

STANDARD FEATURES:

- Highly Efficient Planetary Gearing
- Multi-Disc Wet Brake
 - Spring Applied/Hydraulic Release
 - Rated at Full Winch Load
- "J-Style" Mounting Base
 - Versatile, Multi-Position
- Fast Line Speeds Under Load
- Hydraulic Brake Valve
 - Controlled Lowering of Load
- Durable Motors
 - Long Life
- Simple Component Design
 - Easy Service
- Right- and Left-Hand Drum Rotations
 - Easy Field Conversion
- Complies with SAE J706

OPTIONAL FEATURES:

- Manual or Air/Hydraulic Free Spool
 - Easy-To-Use Spring Activated Engagement
- 4-Way Roller Fairleads
- Spring-Loaded Cable Tensioner
- Custom Mountings
- Special Drum Configurations
- Remote Control (Kit #55091)
 - Operates up to 15 GPM

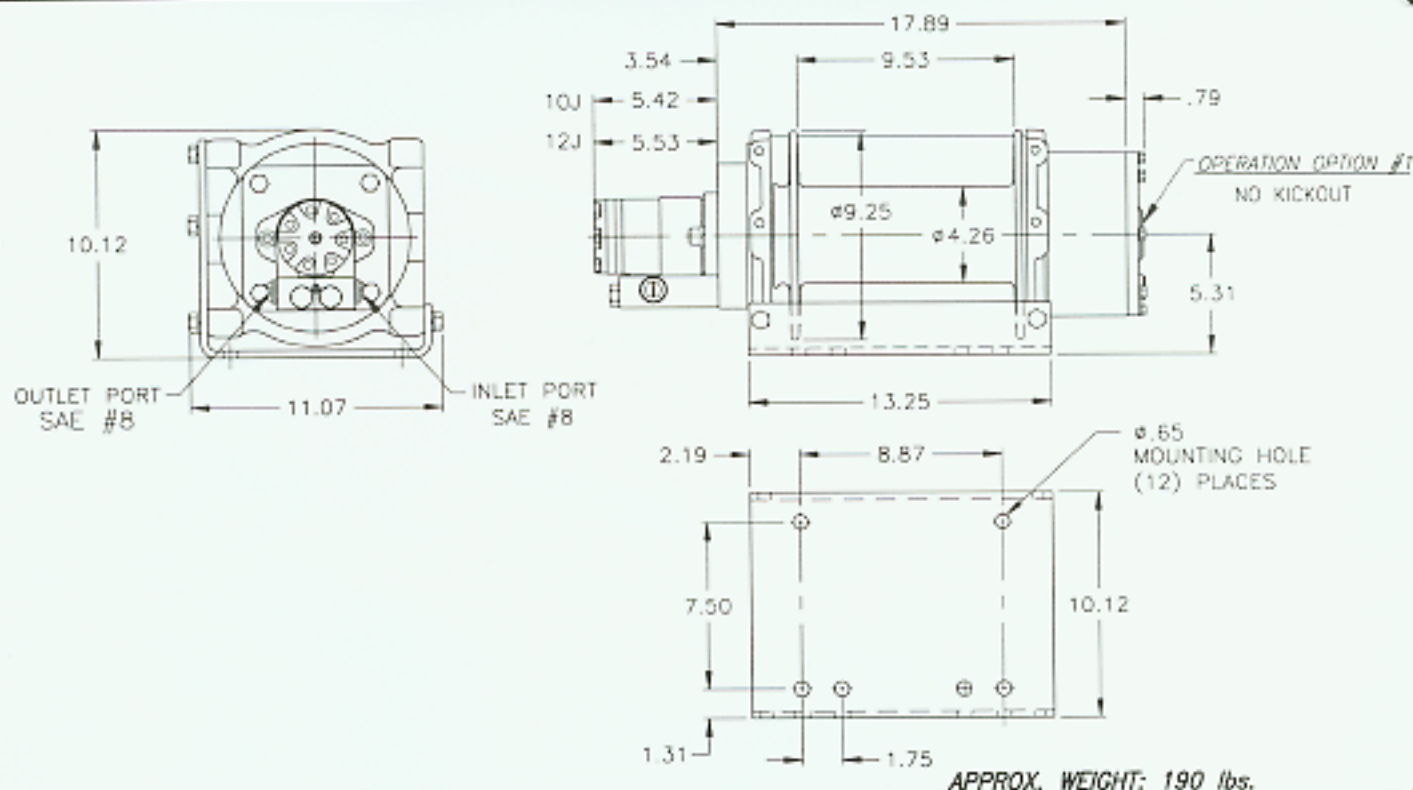
dp WINCH

Pull Ahead!



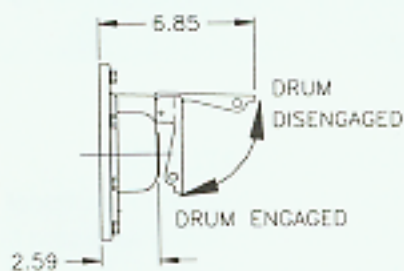
Models 10J-12J

10,000-12,000 LB.

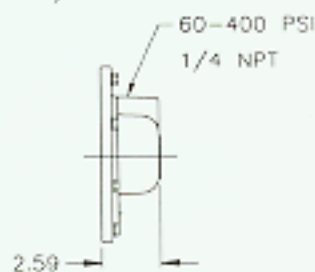


OPTIONAL FEATURES

OPERATION OPTION #5
MANUAL KICKOUT



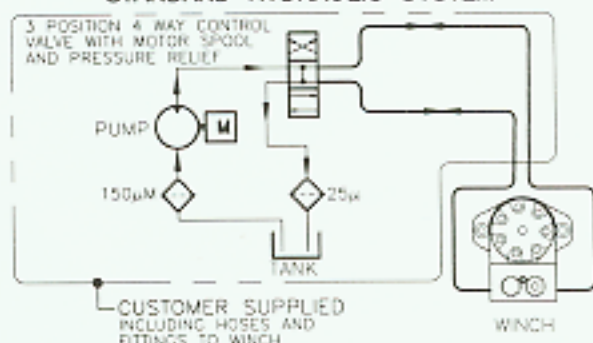
OPERATION OPTION #4
AIR/HYD. KICKOUT



DRUM CAPACITIES - FT

LAYER	3/8" WIRE ROPE	7/16" WIRE ROPE	1/2" WIRE ROPE
1	23	20	18
2	49	44	40
3	79	72	65
4	112	102	93
5	149	137	125
6	189	* 173	* 160

STANDARD HYDRAULIC SYSTEM



NOTE: Drum capacities are in accordance with SAE J706. Actual capacities are usually up to 10% greater than those shown.
*Last layer capacity does not meet SAE J706.

Because of continued product improvement, we reserve the right to make changes without notice.

CAUTION:

The last 5 wraps of cable must be left on the drum to assist the cable clamp in holding the load.

WARNING:

Winches are not intended to be used for the lifting or moving of persons

PERFORMANCE DATA

MODEL 10J

WIRE ROPE DIA. IN.	LAYER	LINE PULL LB.	LINE SPEED FPM
3/8	1	10000	44
	2	8610	51
	3	7560	58
	4	6730	65
	5	6070	72
	6	5530	79

WIRE ROPE DIA. IN.	LAYER	LINE PULL LB.	LINE SPEED FPM
7/16	1	10000	44
	2	8430	53
	3	7290	61
	4	6420	69
	5	5730	77
	6	-	-

Model 10J Performance based on 18 GPM @ 2300 PSI

MODEL 12J

WIRE ROPE DIA. IN.	LAYER	LINE PULL LB.	LINE SPEED FPM
7/16	1	12000	40
	2	10100	48
	3	8750	55
	4	7700	63
	5	6880	70

WIRE ROPE DIA. IN.	LAYER	LINE PULL LB.	LINE SPEED FPM
1/2	1	12000	41
	2	9920	49
	3	8450	58
	4	7360	67
	5	-	-

Model 12J Performance based on 20 GPM @ 2200 PSI

NOTE: The rated line pulls are for the winch only. Consult the wire rope manufacturer for wire rope ratings. Flows listed are Maximum for each specific motor.

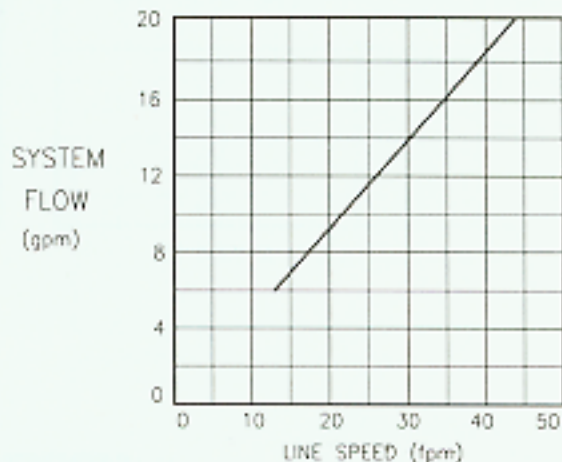
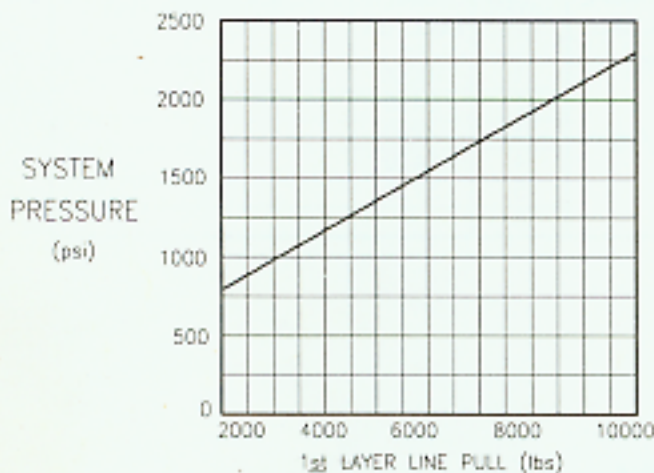


Models 10J-12J

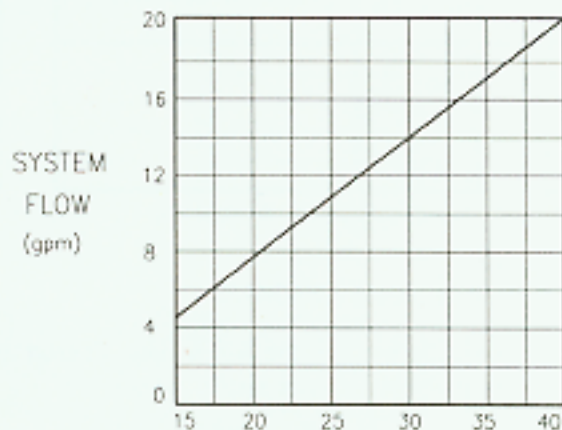
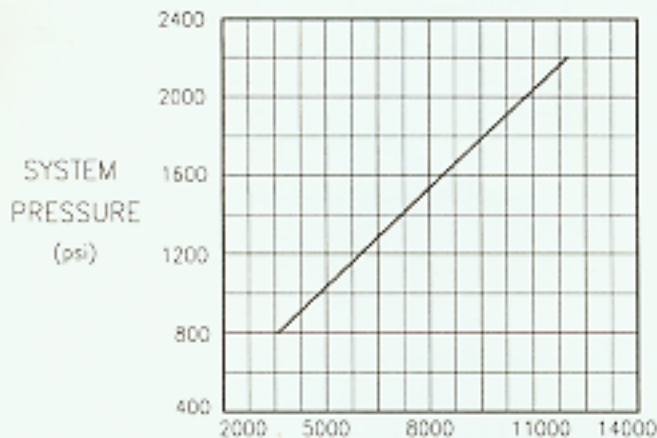
10,000-12,000 LB.

PERFORMANCE CHARTS

MODEL 10J



MODEL 12J



Distributor:



Pull Ahead!

dp Manufacturing, Inc. □ 5647 South 122nd East Ave. □ Tulsa, OK 74146
(918) 250-2450 □ 1-800-DP-WINCH □ Fax: (918) 250-0690 □ www.dpwinch.com