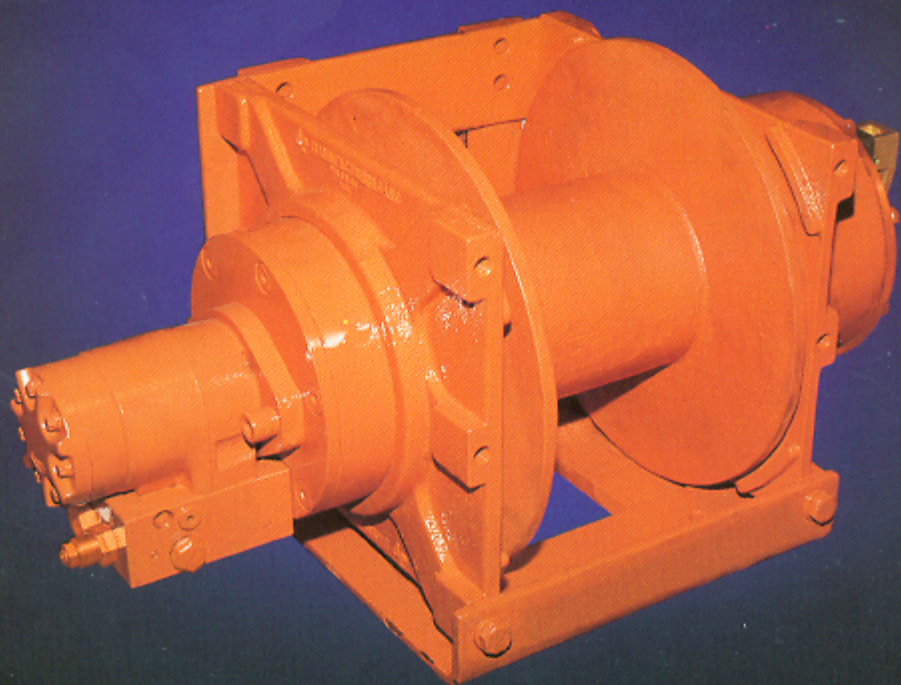




WINCH



Models 12AJ-15AJ-20AJ 12,000-20,000 LB. **Dependable Performance/Compact Component Design**

STANDARD FEATURES:

- Highly Efficient Planetary Gearing
- Multi-Disc Wet Brake
 - Spring Applied/Hydraulic Release
 - Rated at Full Winch Load
- "J-Style" Mounting Base
 - Versatile, Multi-Position
- Fast Line Speeds Under Load
- Hydraulic Brake Valve
 - Controlled Lowering of Load
- Durable Motors
 - Long Life
- Simple Component Design
 - Easy Service
- Right- and Left-Hand Drum Rotations
 - Easy Field Conversion
- Complies with SAE J706

OPTIONAL FEATURES:

- High-Flow or Low-Flow Hydraulic Motors
- Manual or Air/Hydraulic Free Spool
 - Easy-To-Use Spring Activated Engagement
- 4-Way Roller Fairleads
- Spring-Loaded Cable Tensioner
- Custom Mountings
- Special Drum Configurations
- Remote Control (Kit #55091)
 - Operates up to 15 GPM

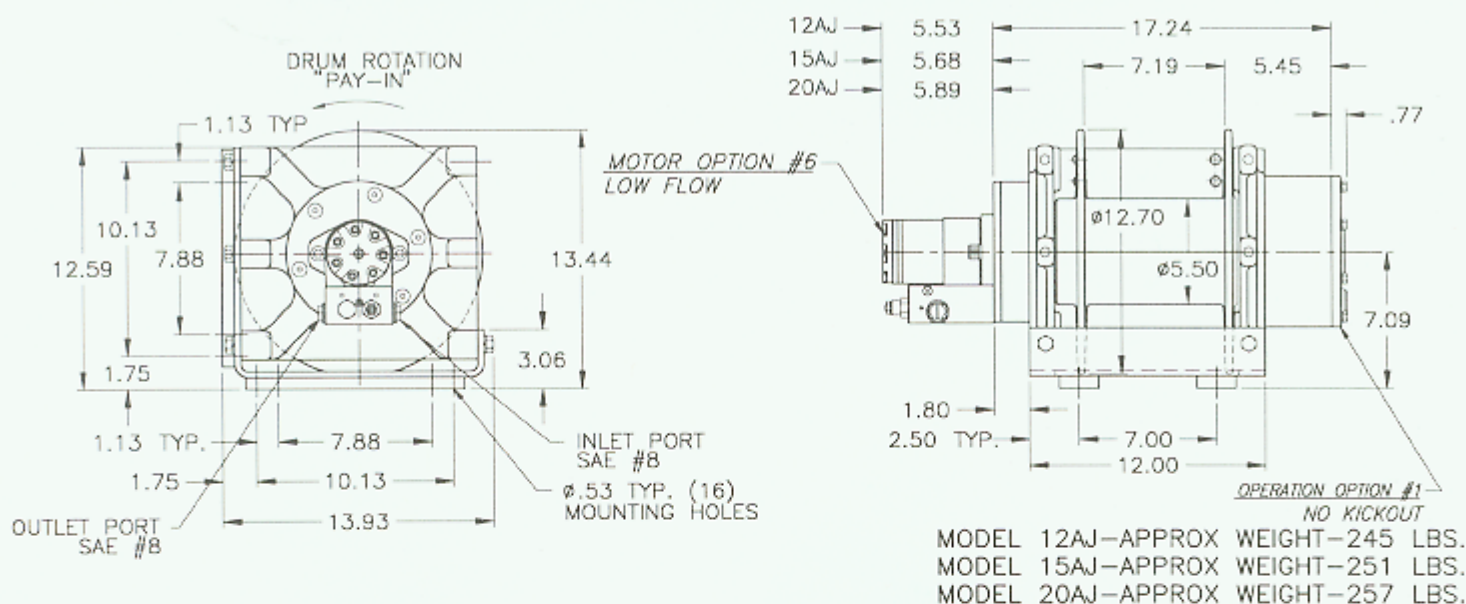


Pull Ahead!



Models 12AJ-15AJ-20AJ

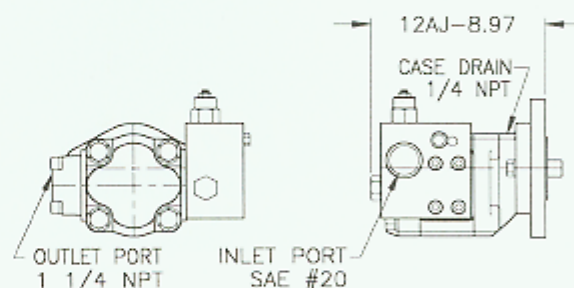
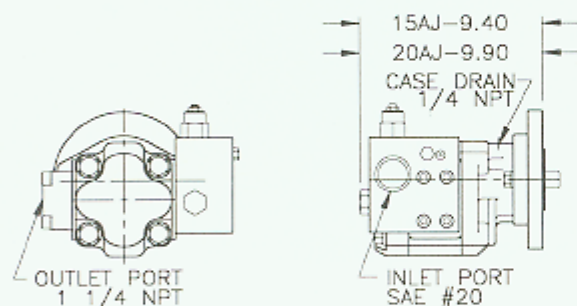
12,000-20,000 LB.



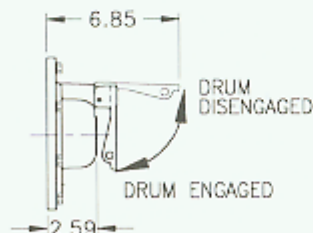
OPTIONAL FEATURES

MOTOR OPTION #1 — HIGH FLOW

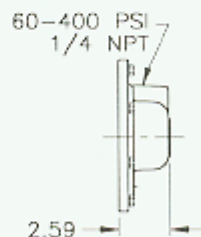
MOTOR OPTION #1 — HIGH FLOW



OPERATION OPTION #5 MANUAL-LEVER KICKOUT



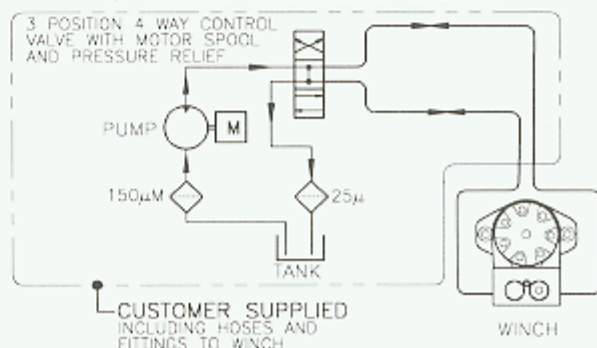
OPERATION OPTION #4 AIR/HYDRAULIC KICKOUT



DRUM CAPACITIES — FT

LAYER	7/16" WIRE ROPE	1/2" WIRE ROPE	9/16" WIRE ROPE	5/8" WIRE ROPE
1	23	20	18	17
2	49	44	40	37
3	79	71	65	60
4	112	102	93	87
5	149	135	125	117
6	189	173	*160	—
7	232	*213	—	—
8	*279	—	—	—

STANDARD HYDRAULIC SYSTEM



NOTE: Drum capacities are in accordance with SAE J706. Actual capacities are usually up to 10% greater than those shown.
 *Last layer capacity does not meet SAE J706.

PERFORMANCE DATA

MODEL 12AJ

WIRE ROPE DIA. IN.	LAYER	LINE PULL LB.	LINE SPEED FPM	
			HIGH FLOW	LOW FLOW
7/16	1	12000	111	44
	2	10500	127	51
	3	9270	144	57
	4	8320	160	64
	5	7550	177	70
	6	6910	193	77
	7	6370	209	83
	8	5910	226	90

WIRE ROPE DIA. IN.	LAYER	LINE PULL LB.	LINE SPEED FPM	
			HIGH FLOW	LOW FLOW
1/2	1	12000	112	45
	2	10300	131	52
	3	9000	150	60
	4	8000	168	67
	5	7200	187	74
	6	6550	206	82
	7	6000	225	89
	8	-	-	-

Model 12AJ Performance based on 20 GPM @ 2400 PSI (low flow) and 40 GPM @ 2650 PSI (high flow)

MODEL 15AJ

WIRE ROPE DIA. IN.	LAYER	LINE PULL LB.	LINE SPEED FPM	
			HIGH FLOW	LOW FLOW
1/2	1	15000	100	35
	2	12900	117	41
	3	11300	134	47
	4	10000	151	53
	5	9000	167	59
	6	8180	184	65
	7	7500	201	71

WIRE ROPE DIA. IN.	LAYER	LINE PULL LB.	LINE SPEED FPM	
			HIGH FLOW	LOW FLOW
9/16	1	15000	101	36
	2	12700	120	42
	3	10900	139	49
	4	9640	158	56
	5	8610	177	62
	6	7780	195	69
	7	-	-	-

Model 15AJ Performance based on 20 GPM @ 2450 PSI (low flow) and 45 GPM @ 2650 PSI (high flow)

MODEL 20AJ

WIRE ROPE DIA. IN.	LAYER	LINE PULL LB.	LINE SPEED FPM	
			HIGH FLOW	LOW FLOW
9/16	1	20000	107	27
	2	16900	127	32
	3	14600	147	37
	4	12800	167	43
	5	11500	185	48
	6	10400	205	53

WIRE ROPE DIA. IN.	LAYER	LINE PULL LB.	LINE SPEED FPM	
			HIGH FLOW	LOW FLOW
5/8	1	20000	108	28
	2	16600	130	33
	3	14200	152	39
	4	12400	174	45
	5	11000	195	50
	6	-	-	-

Model 20AJ Performance based on 20 GPM @ 2550 PSI (low flow) and 60 GPM @ 2800 PSI (high flow)

NOTE: The rated line pulls are for the winch only. Consult the wire rope manufacturer for wire rope ratings.
Flows listed are Maximum for each specific motor.

Because of continued product improvement, we reserve the right to make changes without notice.

CAUTION:

The last 5 wraps of cable must be left on the drum to assist the cable clamp in holding the load.

WARNING:

Winches are not intended to be used for the lifting or moving of persons

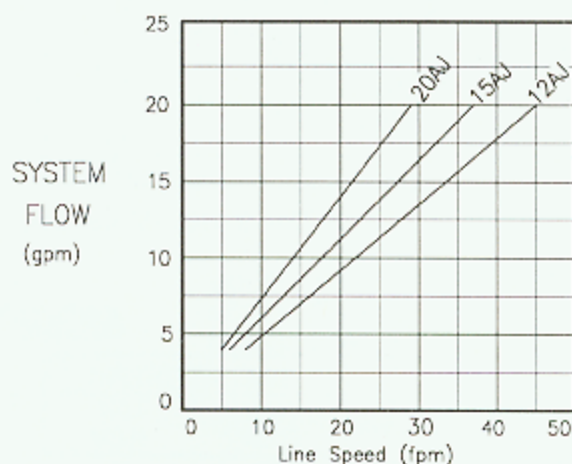
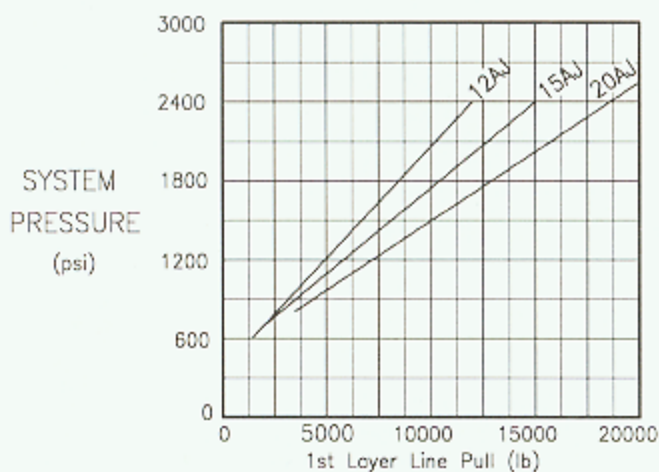


Models 12AJ-15AJ-20AJ

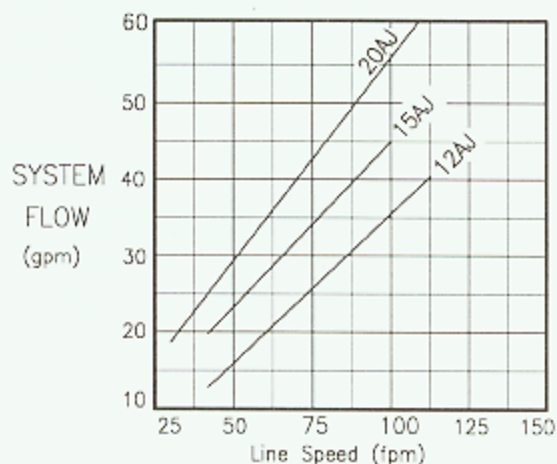
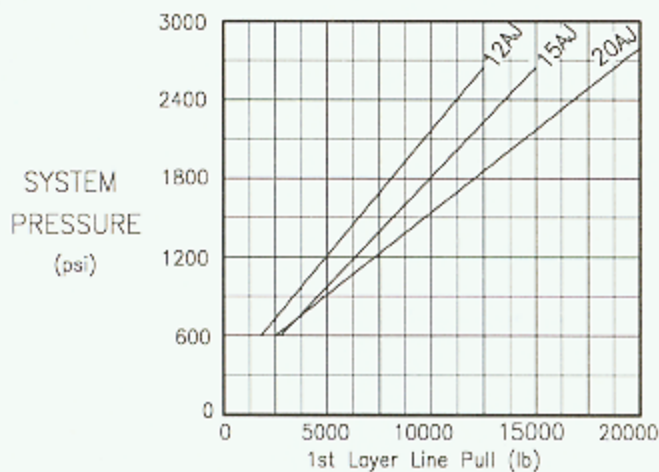
12,000-20,000 LB.

PERFORMANCE CHARTS

LOW FLOW MOTORS



HIGH FLOW MOTORS



Distributor:



Pull Ahead!

dp Manufacturing, Inc. □ 5647 South 122nd East Ave. □ Tulsa, OK 74146
(918) 250-2450 □ 1-800-DP-WINCH □ Fax: (918) 250-0690 □ www.dpwinch.com