

## For Sale List Continued



Hopper all 6,000 pound max capacity • 2 @ \$300 each



Hopper with splash guard \$350

Carts have all metal frames and two caster wheels • Large cart with handle 1 @ 60t x 96l x 48w \$250



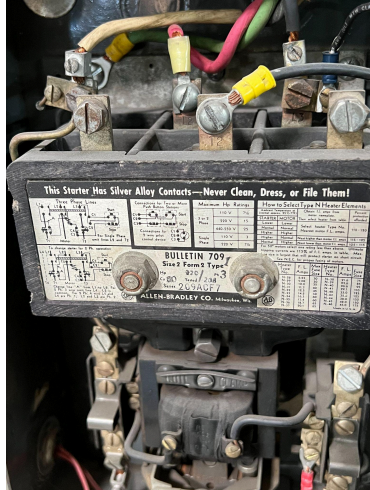
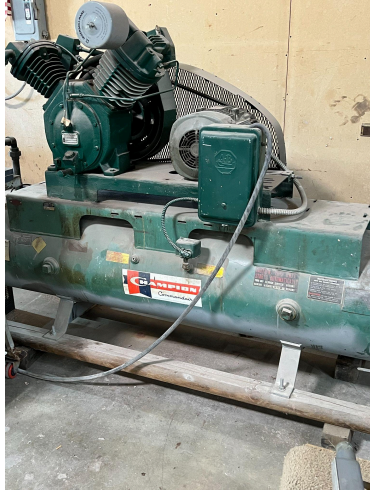
Ex-large stock carts • 3 @ 72t x 108l x 28w \$150 each



Large carts • 12 @ 60t x 72l x 36w \$150 each

Medium cart • 1 @ 48t x 69l x 36w \$100

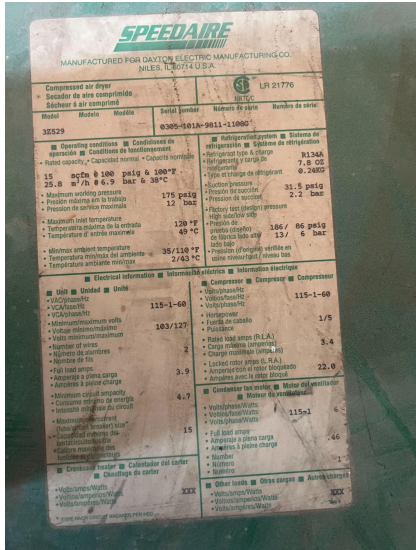
Medium heavy cart • 1 @ 58t x 81l x 44w \$125



Air compressors • SMALL \$550



BIG 113 gal \$700



\$500 for Speedaire (cosmetic damage)



Mill/press \$750 and accessories



Parts cleaner \$50



Roll-in saw \$600





Washer and Dryer \$50



Sandblasters (left) Large \$2000 (right) Small \$1000



Core drill \$15,000 • Hole drill and drill bits with cart and table



Vacuum cup lifter small \$5000



Vacuum cup lifter large \$6000



Vacuum stands \$200 each (3 remaining)

Woods 9" \$40 each

Setting cup deep \$80

Setting cup shallow \$60



3 axis CNC cutting table 230v 84" x 130" max cut size. 9' x 14'6" table size Replaced cutting head unit 8 years ago \$10,000 negotiable (license from Perfect score technologies would be needed if upgraded by them) I quoted new one for \$120,000.



Maxim tilt table \$2000



Break out table with breaker bars and air float. With 5 120v outlets. 9' x 11'10" \$2000



Water fountain • \$500



Table saw \$700



Welder \$ 1100 MIG AND TIG ATTACHMENT



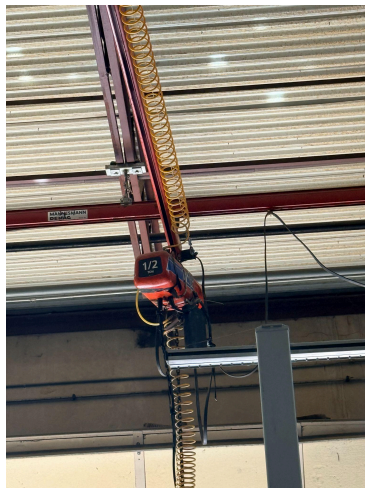
Cherry picker / engine hoist \$100



Tool box with tools included \$2500



Vacuum pump and chamber \$400



Demag 12' workstation crane \$9,600 12' bridge Demag. 16' workstation crane \$12,000 16' bridge CM 1/2 ton hoist on jibe



\$420 3 hoist as is with parts for beam support.



36" 48" and 60" Barley used \$120 and the rack that it's on



Panel saw with a new saw motor I put on about 5 years ago  
\$1800 Blander  
with one 1/2" steel strapping new and one barely used \$180  
New tensioner 3/8" - 3/4" \$60



3/8" utility plywood 4' x 8' 65 sheets \$718.38



1/2" 4'x8' eps eifs foam 2 packs of 50 and 10 loose \$4 a unit \$240 total



2 full rolls of foam and one about 3/8 used \$100



Homastote -7/16" 3-1/2 x 8' staple safe pack-line pads 936 pcs per unit and I have two units with about 100 pieces used from one unit \$2760



Steel rack systems collapsing=2



Metal material roll holder= 60" with 1 roll



Carpeted wrap table with 2- 48" material holders and 1 roll of paper. 48" x 96"



Wrap table with paper dispenser 36" and cutter with two extra rolls.



Carpeted roll tables= 2 - 40" x 84" both with two locking caster and two stationary wheels. Mirror and credenza not included



Large carpeted roll table 48" x 96" Tape measure and towels included!



Set of plastic shelf units



Brass table connectors



Greenlee 7646 11-Ton Hydraulic Knockout Driver with Hand Pump \$1050



Heat buster 44" industrial barrel fan \$200



Makita disc grinder \$130



Orbital sander \$80



Tools lot \$300



Keuffel & Esser surveyor transit level and survey tripod \$200