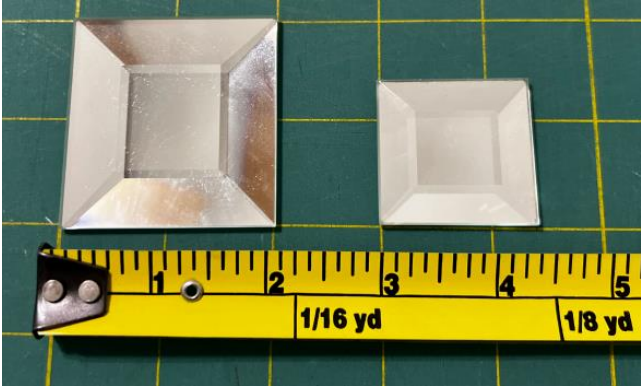
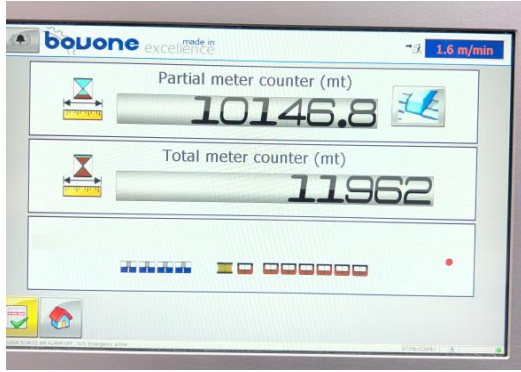


Bovone 461+1 with extension rack and track pad scrubbers. Bevel 1/8" to 1" with movable track for smaller pieces like bevel strips. Also has clip corner clamp rail system (powder coated Bovone blue). \$120,000

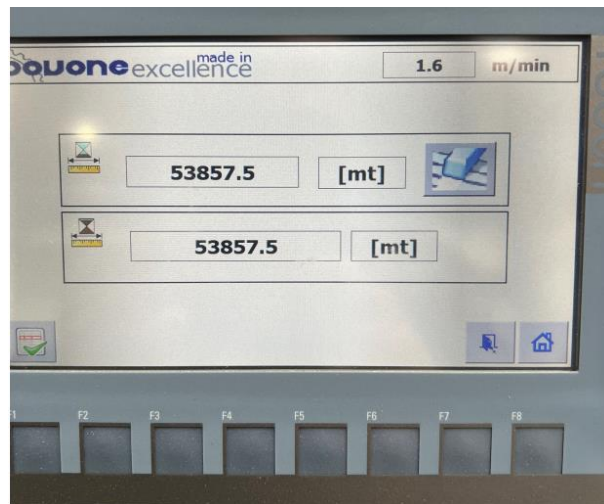


Don't mind the "Measure-By-The-Yard" tape measure (the matriarch is a quilter)





Bovone ELB-14 with custom welded extension rack and pad scrubbers. Flat polish 1/8 to 1". Also has clip corner clamp rail system (powder coated Bovone blue). \$110,000





It's not easy to get images of glass.

Hopper all 6,000 pound max capacity • 2 @ \$300 each



Hopper with splash guard \$300

Carts have all metal frames and two caster wheels • Large cart with handle 1 @ 60t x 96l x 48w \$250



• Ex-large stock carts • 3 @ 72t x 108l x 28w \$150 each



• Large carts • 12 @ 60t x 72l x 36w \$150 each



- Medium cart • 1 @ 48t x 69l x 36w \$100
- Medium heavy cart • 1 @ 58t x 81l x 44w \$125
- Small carts • 9 @ 50t x 48l x 32w \$75

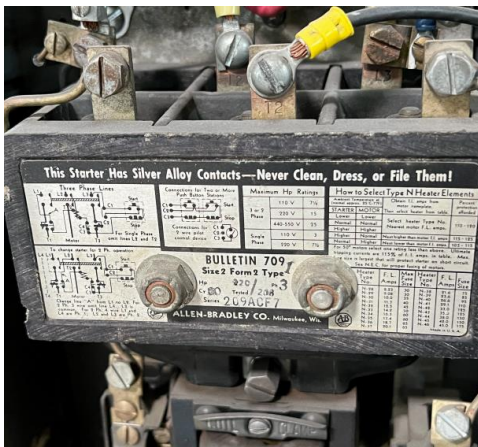


Portacool fans • 3 @ \$100 each





Air compressors • Big 113 gal \$2500 • Small \$1500

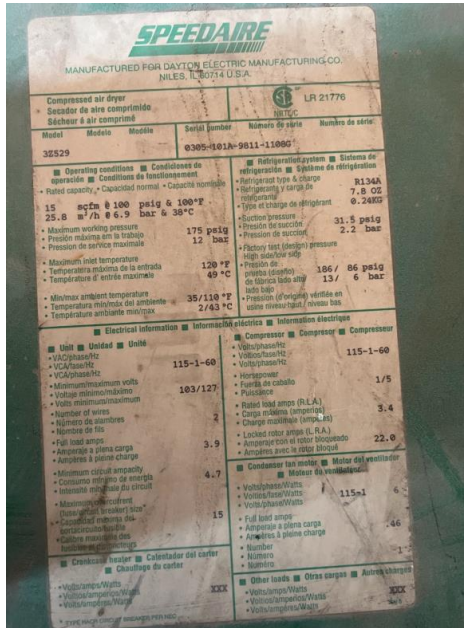




Compressor dryers



\$1200 for Ingersoll Rand



\$1000 for Speedaire

Metal working machines • Monarch \$2000



Mill/press \$750



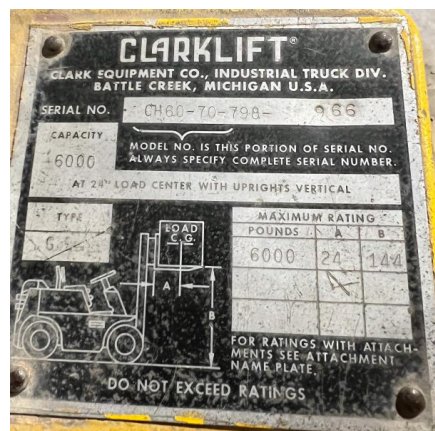
- Parts cleaner \$50



- Roll-in saw \$600



- Forklift \$3500



- Washer and Dryer \$50



- Sandblaster's

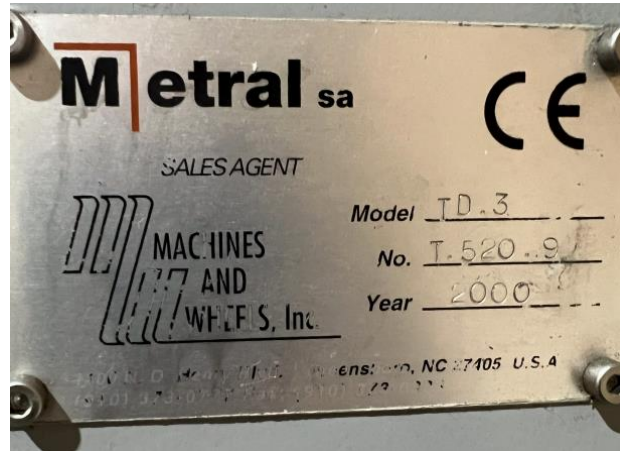


- Large \$2000



- Small \$1000

Core drill \$15,000 • Hole drill and drill bits with cart and table

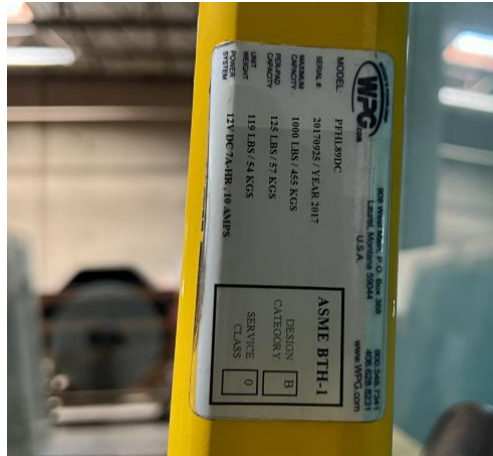


• Vacuum cup lifter large \$6000



• Vacuum cup lifter small \$5000





- Vacuum stands \$200 each or \$600 for all four



- Used vacuum stands with cups and outlets



\$250 small \$300 big Vacuum Cups

- Woods 9" \$40 each
- Setting cup deep \$80
- Setting cup shallow \$60

Cutting table

- 3 axis CNC cutting table 230v 84" x 130" max cut size. 9' x 14'6" table size Replaced cutting head unit 8 years ago \$10,000 negotiable (license from Perfect score technologies would be needed if upgraded by them) I quoted new one for \$120,000



Tilt table/cut table

- Air float tilt table 208-230v 8' x 11'4" \$



Break out table with breaker bars and air float. With 5 120v outlets. 9' x 11'10"



Water fountain • \$500



- Table saw \$700



- Welder \$



- Cherry picker / engine hoist \$100



- Tools and box \$

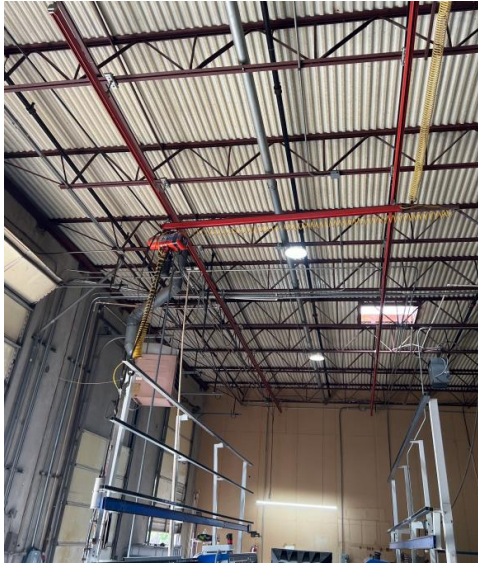


- Vacuum pump and chamber \$400



- Demag 12' workstation crane

\$9,600 12' bridge



- Demag 16' workstation crane



\$12,000 16' bridge CM 1/2 ton hoist on jibe

- \$420 3 hoist as is with parts for beam support.
- \$420

Hollander sell list



36" 48" and 60" Barley used \$120 and the rack that it's on



Panel saw with a new saw motor I put on about 5 years ago \$1800 Blander with one 1/2" steel strapping new and one barely used \$180 New tensioner 3/8" - 3/4" \$60



3/8" utility plywood 4' x 8' 65 sheets \$718.38

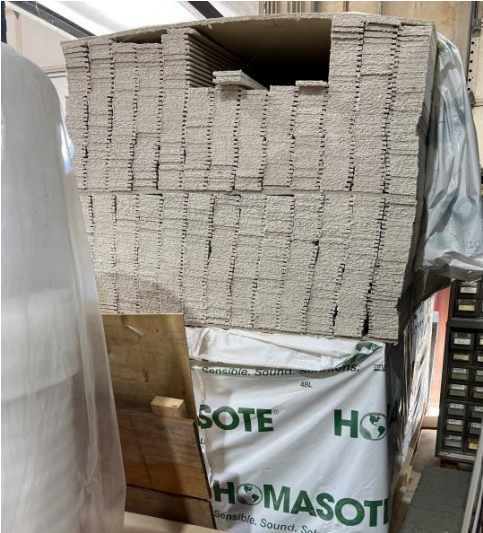
1/2" 4'x8' eps eifs foam 2 packs of 50 and 10 loose \$4 a unit \$240 total



2 full rolls of foam and one about 3/8 used \$100



• Homastote



7/16" 3-1/2 x 8' staple safe pack-line pads 936 pcs per unit and I have two units with about 100 pieces used from one unit \$2760



- Steel rack systems collapsing=2





- Metal material roll holder= 60" with 1 roll



- Carpeted wrap table with 2- 48" material holders and 1 roll of paper. 48" x 96"



- Wrap table with paper dispenser 36" and cutter with two extra rolls.



- Carpeted roll tables= 2 - 40" x 84" both with two locking caster and two stationary wheels.
Mirror and credenza not included



- Large carpeted roll table 48" x 96" Tape measure and towels included!



- 4-5 plastic shelf units



- Brass table connectors

