

## Driver's Education Study Guide

1. Students with a Stage 2 Intermediate License that are 16, but less than 17, years old may not drive between the hours of \_\_\_\_\_ to \_\_\_\_\_.
2. You will fail the road skills test for \_\_\_\_\_.
3. Louisiana spends \_\_\_\_\_ million a year to clean up the highways.
4. Who is responsible for litter coming from the interior or truck bed?  
\_\_\_\_\_
5. If a passenger litters from a vehicle, who is responsible?  
\_\_\_\_\_
6. Examples of littering:  
\_\_\_\_\_  
\_\_\_\_\_
7. Are gas prices an economic indicator of littering?  
\_\_\_\_\_
8. What can you do to help with littering?  
\_\_\_\_\_  
\_\_\_\_\_
9. \_\_\_\_\_ is essential for avoiding crashes.
10. What shape are warning signs?  
\_\_\_\_\_
11. What color are construction signs?  
\_\_\_\_\_
12. Signs:





13. The maximum speed limit should be driven only in \_\_\_\_\_

19. If the traffic light turns green, you should \_\_\_\_\_

20. At a steady yellow traffic light, you should \_\_\_\_\_

23. When can you turn left on red? \_\_\_\_\_

21. A flashing yellow traffic light means \_\_\_\_\_

24. At a flashing red traffic light, you must \_\_\_\_\_

22. When can you turn right on red? \_\_\_\_\_

14. Traffic control devices are used in work zones to \_\_\_\_\_

15. In construction work zones, you should \_\_\_\_\_

16. Traffic fines are \_\_\_\_\_ for construction zones.

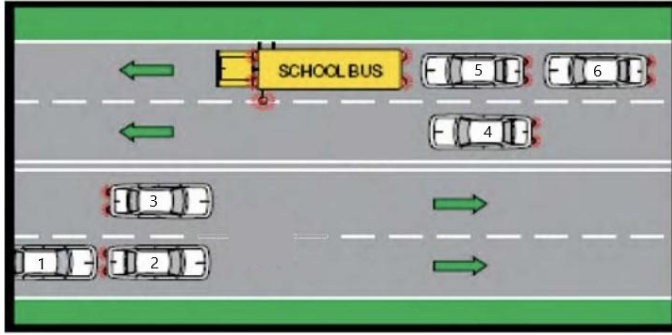
17. Traffic patterns in work zones can change \_\_\_\_\_

18. The diagonal stripes on the barricade or vertical panel \_\_\_\_\_

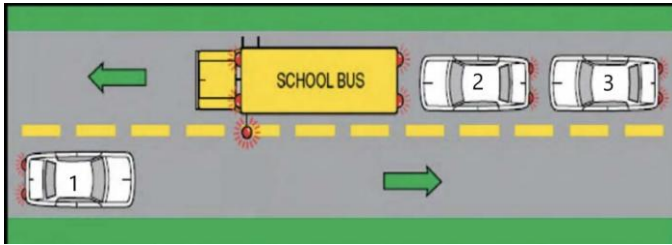
22. When can you turn right on red? \_\_\_\_\_
- \_\_\_\_\_
24. At a flashing red traffic light, you must \_\_\_\_\_
25. Yellow lines = \_\_\_\_\_ White lines = \_\_\_\_\_
26. Solid lines = \_\_\_\_\_ Broken lines = \_\_\_\_\_
27. Double solid yellow lines mean \_\_\_\_\_
28. Single solid white line means \_\_\_\_\_
29. Double solid white lines mean \_\_\_\_\_
30. Red pavement reflectors indicate \_\_\_\_\_
31. Stop lines are \_\_\_\_\_ and indicate \_\_\_\_\_
32. Crosswalk lines are normally \_\_\_\_\_
33. If you discover you are in a turning lane and wish to go straight, you should \_\_\_\_\_
- \_\_\_\_\_
34. Who must wear a seatbelt? \_\_\_\_\_
35. What parts of the two-part safety belt do you have to wear? \_\_\_\_\_
36. Your chances of surviving a crash are \_\_\_\_\_ times greater when wearing seatbelts.
37. The law requiring safety seat belts for children is determined by \_\_\_\_\_
38. Where do children have to be seated in a vehicle? \_\_\_\_\_
39. Do airbags replace safety belts? \_\_\_\_\_
40. You should sit at least \_\_\_\_\_ inches from the steering wheel.
41. Your hands should be on opposite sides of the wheel at \_\_\_\_\_ or \_\_\_\_\_.
42. Older, frail persons and children should sit \_\_\_\_\_
43. Vehicle defects should be corrected \_\_\_\_\_.
44. When should you inspect your vehicle? \_\_\_\_\_
45. Before driving, you should \_\_\_\_\_
- \_\_\_\_\_
46. New and different driving challenges come with the change of \_\_\_\_\_.
47. If you are stranded during cold weather, you should \_\_\_\_\_
48. SIPDE stands for \_\_\_\_\_
49. If you are worried, nervous, angry, frustrated or depressed \_\_\_\_\_
50. Driving while stressed can cause you to be \_\_\_\_\_
- \_\_\_\_\_
51. How often should a driver rest? \_\_\_\_\_
52. Driving while fatigued may lead to \_\_\_\_\_
53. To prevent fatigue during a long driving trip, you should \_\_\_\_\_
- \_\_\_\_\_

54. What are some warning signs of drowsy driving? \_\_\_\_\_
55. Some prescription drugs can impact driving and affect reflexes, judgement, vision and alertness in ways similar to \_\_\_\_\_.
56. When confronted by an aggressive driver, you should \_\_\_\_\_
57. Looking \_\_\_\_\_ to \_\_\_\_\_ seconds ahead will allow time to prepare for traffic conditions.
58. What is a visual lead? \_\_\_\_\_
59. What are the steps to change lanes? \_\_\_\_\_
60. When going down a long or steep hill, you should check your \_\_\_\_\_ for quickly approaching vehicles.
61. How can you best check blind spots? \_\_\_\_\_
62. What helps you to judge following distances? \_\_\_\_\_
63. When should you increase your following distance? \_\_\_\_\_
64. When you park facing downhill, you should \_\_\_\_\_
65. On two lane roads when you are being passed, you should \_\_\_\_\_
66. Road surfaces are most slippery when \_\_\_\_\_
67. If you find yourself in a skid or hydroplaning: \_\_\_\_\_
68. To prevent hydroplaning: \_\_\_\_\_
69. You should \_\_\_\_\_ your following distance during night driving.
70. Your headlights must be on \_\_\_\_\_
71. Pedestrians always have \_\_\_\_\_ and you must \_\_\_\_\_ to them at all times.
72. \_\_\_\_\_ may not follow the law or use safe crossing practices.
73. When you see people or children near the roadway, you should \_\_\_\_\_.
74. Pedestrians using guide dogs or canes with or without a red tip must be given the \_\_\_\_\_.
75. What should you do if you are turning at a red light with a crosswalk?
76. You should not \_\_\_\_\_ at a visually impaired pedestrian.
77. Use your cell phone only in \_\_\_\_\_.

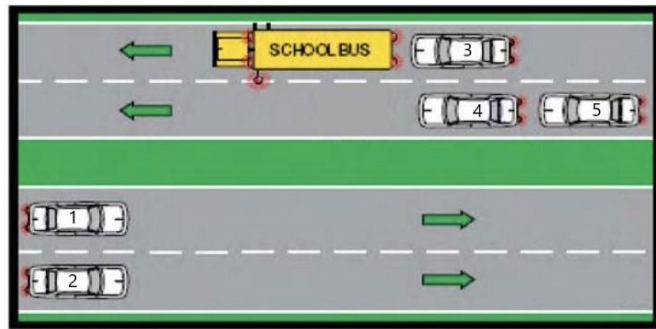
78. It is illegal for anyone 17 and under to use \_\_\_\_\_.
79. Who can text while driving? \_\_\_\_\_.
80. Bicycles are considered \_\_\_\_\_ and have the same rights as automobiles.
81. You must yield to bicycles as you would for pedestrians and vehicles, and you should \_\_\_\_\_.
82. A \_\_\_\_\_ foot distance must be present between the passing automobile and bicyclists.
83. When turning left, you must \_\_\_\_\_.
84. Drivers should not swing in front of a bicyclist to make a turn, you should \_\_\_\_\_.
85. When a pedestrian or a bicyclist moves into your lane, you may \_\_\_\_\_.
86. Two-thirds of the car/motorcycle collisions are caused by \_\_\_\_\_.
87. When driving around motorcycles, you must \_\_\_\_\_.
88. Motorcycles are allowed the \_\_\_\_\_.
89. You should not pass a motorcycle too fast or too close because of \_\_\_\_\_.
90. \_\_\_\_\_ are the most likely place for car/motorcycle collisions to occur.
91. What is the minimum following distance behind a motorcycle? \_\_\_\_\_.
92. If you cannot see a truck driver's \_\_\_\_\_ in one of his mirrors, he cannot see you.
93. When traveling up or down hills or near weigh stations \_\_\_\_\_.
94. Big trucks need more room to \_\_\_\_\_, take longer to \_\_\_\_\_ and it takes longer for them to \_\_\_\_\_.
95. What is the following distance behind a big truck in good weather? \_\_\_\_\_.
96. Blind spots around the front, back and sides of big trucks are called \_\_\_\_\_.
97. When a truck or bus is making a right turn, \_\_\_\_\_.
98. If an officer signals for you to stop, you should \_\_\_\_\_.
99. What is the most significant factor in the severity of crashes? \_\_\_\_\_.
100. It is illegal to participate in \_\_\_\_\_.
101. You must stop at least \_\_\_\_\_ feet from a stopped school bus loading or unloading children and do not proceed until the bus moves.
102. Which cars must stop?



\_\_\_\_\_



\_\_\_\_\_



\_\_\_\_\_

103. When turning, the law requires that you signal and get into the proper lane at least \_\_\_\_\_ feet.

104. The shared center turn lane may be used for \_\_\_\_\_, you may not \_\_\_\_\_ or drive \_\_\_\_\_ an intersection in it.

105. A driver making a left turn must \_\_\_\_\_.

106. Emergency vehicles running lights and sirens always have the \_\_\_\_\_. You should pull to the \_\_\_\_\_ and \_\_\_\_\_ until it passes.

107. When entering a road from a driveway, alley or roadside, you must \_\_\_\_\_ to vehicles on the main road.

108. Drivers must stop within \_\_\_\_\_ feet of a railroad crossing.

109. You must stop at a railroad crossing when: \_\_\_\_\_

\_\_\_\_\_

\_\_\_\_\_

110. Louisiana law prohibits drivers from \_\_\_\_\_, \_\_\_\_\_  
or \_\_\_\_\_ at railroad crossings.

111. Always stop at railroad crossings when the lights are flashing, if they are malfunctioning  
and there is no train, you may \_\_\_\_\_.

112. As you approach a railroad crossing, always \_\_\_\_\_  
whether the warning lights are flashing or not.

113. Railroad pavement markings are \_\_\_\_\_.

114. The weight ratio of a train to a car is like that of a car to a \_\_\_\_\_.

115. You may not follow emergency vehicles responding to a call closer than \_\_\_\_\_ feet.



116. Park here only with \_\_\_\_\_

117. When entering an interstate, ensure that you are traveling at the \_\_\_\_\_  
as other traffic.

118. Procedure for entering interstate: \_\_\_\_\_  
\_\_\_\_\_  
\_\_\_\_\_

119. Stay in the \_\_\_\_\_ lane unless passing, exiting or letting another vehicle  
enter while driving on interstate highways.

120. On the interstate, a “merge” sign tells you to be ready to adjust your speed or to  
\_\_\_\_\_.

121. If you miss your exit:  
\_\_\_\_\_  
\_\_\_\_\_

122. When driving on gravel or dirt, you must \_\_\_\_\_  
\_\_\_\_\_.

123. Before entering a curve, you should \_\_\_\_\_.

124. When driving in bad weather, use your low beams and \_\_\_\_\_  
\_\_\_\_\_.

125. What is distracted driving? \_\_\_\_\_  
\_\_\_\_\_.

126. Shifting gears is a distraction. True or False

127. Teenagers have higher crash rates due to \_\_\_\_\_.
128. To avoid a collision, you may need to \_\_\_\_\_, \_\_\_\_\_, or \_\_\_\_\_.
129. If you see a car coming toward you in your lane, first \_\_\_\_\_, flash your lights, then brake and steer off to the right.
130. When a vehicle is attempting to pass you, help by \_\_\_\_\_ and moving as far as you can to the \_\_\_\_\_ safely.
131. If you are about to be hit from the rear: \_\_\_\_\_.
132. To steer out of a skid when the rear of the vehicle is skidding to the right, turn your front wheels to the \_\_\_\_\_.
133. If your wheels slip off the pavement: \_\_\_\_\_.
134. If your brakes fail: \_\_\_\_\_.
135. During a breakdown, do not try to \_\_\_\_\_.
136. If you see a flooded roadway, you should \_\_\_\_\_.
137. When in a crash, you must \_\_\_\_\_.
138. When leaving a vehicle unattended, always \_\_\_\_\_.
139. Emergency vehicles on a call always have the \_\_\_\_\_ and may go through a \_\_\_\_\_.
140. Driving under the influence of alcohol or certain drugs is a \_\_\_\_\_.
141. The only thing that lessens the effect of alcohol is \_\_\_\_\_.
142. Remember that alcohol: \_\_\_\_\_.
143. The legal BAC for 21 years of age and older is \_\_\_\_\_.
144. Signs of impaired driving are \_\_\_\_\_.



145. Any open container of alcohol in the vehicle puts \_\_\_\_\_ at risk of fines.

146. If someone tries to drink and drive or you see a drunk driver, you should \_\_\_\_\_

---

147. What drugs can affect driving? \_\_\_\_\_

---

148. If you refuse the BAC test, you will lose your license for \_\_\_\_\_ days on your first offense.