



SANTA-FE™
DEHUMIDIFIERS

PRODUCT CATALOG



PIONEERS OF INDOOR AIR QUALITY SOLUTIONS.

AT SANTA-FE, WE ARE FOCUSED ON THE FRONT LINE IN DEFENSE – THE BIG 3: DEHUMIDIFICATION, FILTRATION AND VENTILATION.

DEHUMIDIFICATION

Excess moisture in the home can lead to poor indoor air quality, discomfort, and even structural damage. High humidity levels promote the presence of airborne pollutants such as dust, pollen, mold spores, and bacteria—putting both the home and its occupants at risk.

Santa-Fe's innovative dehumidifiers are designed to maintain ideal humidity levels, regardless of outdoor conditions or air conditioning runtime. Combined with advanced MERV-13 filtration, our systems help reduce indoor pollutants, creating a healthier, more comfortable living environment while protecting the integrity of the home.



VENTILATION

Santa-Fe's Ultra Series Whole House Ventilating Dehumidifiers provide the additional benefit of outdoor mechanical supply ventilation that is filtered through a MERV-13 filter.

INDUSTRY-LEADING WARRANTY.

To say we stand behind our products is an understatement. While most manufacturers offer only a 1-year warranty, every Santa-Fe dehumidifier is backed with an industry-leading Total Peace of Mind 6-year warranty that includes five years full replacement plus one year parts.

FILTERED TO THE HIGHEST STANDARDS OF FRESH.

Over a 6-year period, MERV-13 filters will remove two pounds of dust, pollen, mold spores, pet dander, and bacteria from the air in a home.* In comparison, big-box units have MERV-4 or washable filters, which only remove 7 ounces of material from the air over the same period of time.

*Based on regularly changing your air filter: see instructional manual for more information.

The **Santa-Fe Portable Series** offers a wide variety of superior dehumidification options. Designed with basement and crawl space applications in mind, our portable dehumidifiers are professional-grade, high-efficiency and easy to install.

▶ COMPACT70



- + **MODEL:** 4044110
- + **OPERATING TEMPERATURE:** 49°F - 95°F
- + **FILTER:** MERV-13
- + **CRAWLSPACE SIZING:** UP TO 1,800 SQ. FT. - 2,600 SQ. FT.
- + **BASEMENT SIZING:** UP TO 1,800 SQ. FT. - 2,200 SQ. FT.
- + **DIMENSIONS:** 12"W X 12"H X 21"D
- + **@80°F / 60%RH**
PINT CAPACITY: 70 PINTS / 8.75 GALLONS PER DAY
ENERGY FACTOR: 2.6 L/KWH
- + **@65°F / 60%RH**
PINT CAPACITY: 43.7 PINTS / 5.4 GALLONS PER DAY
ENERGY FACTOR: 1.96 L/KWH
- + **HVAC SYSTEM INTEGRATION:** NO
- + **VENTILATION:** NO
- + **CONTROL:** ON-BOARD DEHUMIDISTAT

▶ OASIS105



- + **MODEL:** 4044510
- + **OPERATING TEMPERATURE:** 49°F - 95°F
- + **FILTER:** MERV-13
- + **CRAWLSPACE SIZING:** UP TO 3,300 SQ. FT.
- + **BASEMENT SIZING:** UP TO 2,600 SQ. FT.
- + **DIMENSIONS:** 24"W X 14.5"H X 16"D
- + **@80°F / 60%RH**
PINT CAPACITY: 102 PINTS / 12.75 GALLONS PER DAY
ENERGY FACTOR: 3.54 L/KWH
- + **@65°F / 60%RH**
PINT CAPACITY: 67 PINTS / 8.37 GALLONS PER DAY
ENERGY FACTOR: 2.81 L/KWH
- + **HVAC SYSTEM INTEGRATION:** NO
- + **VENTILATION:** NO
- + **CONTROL:** ON-BOARD DIGITAL OR LOW-VOLTAGE CONTROLLER



▶ **ADVANCE DRY110**



- + **MODEL:** 4047010
- + **OPERATING TEMPERATURE:** 49°F - 95°F
- + **FILTER:** MERV-13
- + **CRAWLSPACE SIZING:** UP TO 2,800 SQ. FT. - 3,600 SQ. FT.
- + **BASEMENT SIZING:** UP TO 2,500 SQ. FT. - 2,900 SQ. FT.
- + **DIMENSIONS:** 14.35"W X 24"H X 29"D
- + **@80°F / 60%RH**
PINT CAPACITY: 110 PINTS / 13.75 GALLONS PER DAY
ENERGY FACTOR: 3.66 L/KWH
- + **@65°F / 60%RH**
PINT CAPACITY: 70 PINTS / 8.75 GALLONS PER DAY
ENERGY FACTOR: 2.81 L/KWH
- + **HVAC SYSTEM INTEGRATION:** NO
- + **VENTILATION:** NO
- + **SMARTAIRE™ REMOTE SENSOR:** OPTIONAL
- + **CONTROL:** ON-BOARD DIGITAL CONTROLLER



▶ **CLASSIC**



- + **MODEL:** 4044710
- + **OPERATING TEMPERATURE:** 56°F - 95°F
- + **FILTER:** MERV-13
- + **BASEMENT SIZING:** UP TO 2,500 SQ. FT. - 2,900 SQ. FT.
- + **DIMENSIONS:** 20"W X 36"H X 17"D
- + **@80°F / 60%RH**
PINT CAPACITY: 116 PINTS / 14.5 GALLONS PER DAY
ENERGY FACTOR: 3.43 L/KWH
- + **@65°F / 60%RH**
PINT CAPACITY: 76 PINTS / 9.5 GALLONS PER DAY
ENERGY FACTOR: 2.8 L/KWH
- + **HVAC SYSTEM INTEGRATION:** NO
- + **VENTILATION:** NO
- + **CONTROL:** ON-BOARD DEHUMIDISTAT

Basements and crawl spaces are ground zero for moisture problems that can lead to mold, pests, structural damage, and poor indoor air quality. **Santa-Fe Portable Dehumidifiers** are built to tackle these challenges head-on, delivering powerful protection where it's needed most.

- + High-performance moisture control for basements and crawl spaces.
- + Advanced MERV-13 filtration to reduce allergens, mold spores, and bacteria.
- + Energy-efficient operation.
- + Durable, professional-grade design for long-term reliability.
- + Helps protect the entire home by preventing moisture migration and improving air quality throughout.

The **Ultra Series** offers the ultimate protection. Designed with dedicated ducting for whole home dehumidification and ventilation options.

▶ ULTRA70



- + **MODEL:** 4044100
- + **OPERATING TEMPERATURE:** 49°F - 95°F
- + **FILTER:** MERV-13
- + **SIZING:** UP TO 1,800 SQ. FT. / 18,000 CU. FT.
- + **DIMENSIONS:** 12"W X 12"H X 28"D
- + **@80°F / 60%RH**
PINT CAPACITY: 70 PINTS / 8.75 GALLONS PER DAY
ENERGY FACTOR: 2.6 L/KWH
- + **@73°F / 60%RH**
PINT CAPACITY: 52.45 PINTS / 6.55 GALLONS PER DAY
ENERGY FACTOR: 2.04 L/KWH
- + **HVAC SYSTEM INTEGRATION:** YES
- + **VENTILATION:** OPTIONAL
- + **CONTROL:** ON-BOARD DEHUMIDISTAT OR LOW-VOLTAGE CONTROLLER

▶ ULTRA V100



- + **MODEL:** 4047100
- + **OPERATING TEMPERATURE:** 34°F - 105°F
- + **FILTER:** MERV-13
- + **SIZING:** UP TO 2,300 SQ. FT. / 23,000 CU. FT.
- + **DIMENSIONS:** 14.35"W X 24"H X 39.25"D
- + **@80°F / 60%RH**
PINT CAPACITY: 100 PINTS / 12.6 GALLONS PER DAY
ENERGY FACTOR: 3.0 L/KWH
- + **@73°F / 60%RH**
PINT CAPACITY: 82 PINTS / 10.25 GALLONS PER DAY
ENERGY FACTOR: 2.63 L/KWH
- + **HVAC SYSTEM INTEGRATION:** YES
- + **VENTILATION:** OPTIONAL
- + **SMARTAIRE™ REMOTE SENSOR:** OPTIONAL
- + **CONTROL:** ON-BOARD DIGITAL OR LOW-VOLTAGE CONTROLLER

▶ ULTRA V125



- + **MODEL:** 4047200
- + **OPERATING TEMPERATURE:** 34°F - 105°F
- + **FILTER:** MERV-13
- + **SIZING:** UP TO 3,000 SQ. FT. / 30,000 CU. FT.
- + **DIMENSIONS:** 14.35"W X 24"H X 39.25"D
- + **@80°F / 60%RH**
PINT CAPACITY: 125 PINTS / 15.5 GALLONS PER DAY
ENERGY FACTOR: 2.8 L/KWH
- + **@73°F / 60%RH**
PINT CAPACITY: 101 PINTS / 12.6 GALLONS PER DAY
ENERGY FACTOR: 2.45 L/KWH
- + **HVAC SYSTEM INTEGRATION:** YES
- + **VENTILATION:** OPTIONAL
- + **SMARTAIRE™ REMOTE SENSOR:** OPTIONAL
- + **CONTROL:** ON-BOARD DIGITAL OR LOW-VOLTAGE CONTROLLER



▶ ULTRA V155



- + **MODEL:** 4047300
- + **OPERATING TEMPERATURE:** 34°F - 105°F
- + **FILTER:** MERV-13
- + **SIZING:** UP TO 3,500 SQ. FT. / 35,000 CU. FT.
- + **DIMENSIONS:** 14.35"W X 24"H X 39.25"D
- + **@80°F / 60%RH**
PINT CAPACITY: 155 PINTS / 19.3 GALLONS PER DAY
ENERGY FACTOR: 3.35 L/KWH
- + **@73°F / 60%RH**
PINT CAPACITY: 128 PINTS / 16 GALLONS PER DAY
ENERGY FACTOR: 3.08 L/KWH
- + **HVAC SYSTEM INTEGRATION:** YES
- + **VENTILATION:** OPTIONAL
- + **SMARTAIRE™ REMOTE SENSOR:** OPTIONAL
- + **CONTROL:** ON-BOARD DIGITAL OR LOW-VOLTAGE CONTROLLER



▶ ULTRA V205



- + **MODEL:** 4046180
- + **OPERATING TEMPERATURE:** 40°F - 104°F
- + **FILTER:** MERV-13
- + **SIZING:** UP TO 5,000 SQ. FT. / 50,000 CU. FT.
- + **DIMENSIONS:** 26.75"W X 20.75"H X 38"D
- + **@80°F / 60%RH**
PINT CAPACITY: 205 PINTS / 25.625 GALLONS PER DAY
ENERGY FACTOR: 3.5 L/KWH
- + **@73°F / 60%RH**
PINT CAPACITY: 173 PINTS / 21.6 GALLONS PER DAY
ENERGY FACTOR: 3.0 L/KWH
- + **HVAC SYSTEM INTEGRATION:** YES
- + **VENTILATION:** OPTIONAL
- + **SMARTAIRE™ REMOTE SENSOR:** OPTIONAL
- + **CONTROL:** ON-BOARD DIGITAL OR LOW-VOLTAGE CONTROLLER



Modern homes are tightly sealed for energy efficiency—but that can trap moisture and indoor pollutants, compromising air quality and comfort. **Santa-Fe Whole Home Ventilating Dehumidifiers** solve this by:

- + Controlling humidity throughout the entire home, preventing mold, pests, and structural damage.
- + Filtering and conditioning incoming air with advanced MERV-13 filtration.
- + Slightly pressurizing the home to reduce outdoor pollutants and prevent back-drafting of combustion gases.
- + Improving overall indoor air quality for a healthier, more comfortable living environment.
- + These systems deliver energy-efficient, whole-home moisture control—making every room healthier, safer, and more comfortable.



The **UltraMD33** is the first true in-wall dehumidifier. Featuring a tamper-proof cover, this unit runs independently of the HVAC system and creates a comfortable, healthier living environment for residents. Ideal for apartments, ductless mini-split applications, basements, and other space dehumidification needs. The MD33 can also be installed on a wall with the Surface Mount Kit and partially through a wall with the Bezel Kit.

▶ ULTRAMD33



- ✦ **MODEL:** 4044610
- ✦ **OPERATING TEMPERATURE:** 49°F - 95°F
- ✦ **FILTER:** WASHABLE
- ✦ **SIZING:** UP TO 1,200 SQ. FT. / 12,000 CU. FT.
- ✦ **DIMENSIONS:** 14.19"W X 30"H X 5.75"D
- ✦ **@80°F / 60%RH**
PINT CAPACITY: 37 PINTS / 4.6 GALLONS PER DAY
ENERGY FACTOR: 2.4 L/KWH
- ✦ **@65°F / 60%RH**
PINT CAPACITY: 22 PINTS / 2.75 GALLONS PER DAY
ENERGY FACTOR: 1.64 L/KWH
- ✦ **HVAC SYSTEM INTEGRATION:** NO
- ✦ **VENTILATION:** NO
- ✦ **CONTROL:** ON-BOARD DEHUMIDISTAT

SURFACE MOUNT KIT

PART NUMBER: 4037766

The Ultra Series Surface Mount Kit can be used to permanently install the Ultra Series MD33 In-Wall Dehumidifier to masonry or CMU block when through-the-wall installation is not available.



2X4 WALL MOUNTING BEZEL KIT

PART NUMBER: 4037767

Easily install the Ultra Series MD33 In-Wall Dehumidifier in a 2x4 wall cavity without cutting through both sides of drywall. The powder-coated metal bezel provides a sleek, polished finish that blends into any space.



REAR PANEL KIT

PART NUMBER: 4037768

The Ultra Series Rear Panel Kit conceals the back of the MD33 In-Wall Dehumidifier in 2x4 installations, covering drywall gaps with a durable, powder-coated metal panel for a clean, finished look.



COMMITTED TO YOUR SUCCESS.

At Santa-Fe, we are committed to partnering with you. After all, when you succeed, we succeed. And that's why we're with you every step of the way.

WHAT YOU CAN EXPECT FROM US

- + Comprehensive product training
- + Application and installation guidance
- + Field service and warranty repairs
- + Marketing and product literature
- + Customer service excellence



The Santa-Fe Difference:

+ WARRANTY/QUALITY/LOW MAINTENANCE

Industry-Leading 6-Year Total Peace of Mind Warranty

+ AIR FILTRATION

Industry-Leading MERV-13 Filters

+ ENERGY SAVINGS AND EFFICIENCY

Up to 36% More Efficient than Competitors

+ SALES SUPPORT

Dedicated Support Nationwide

+ HEADQUARTERED IN MADISON, WI

Engineered and Supported in the USA



FILTERS

▶ COMPACT70



MERV-13

- + SIZE: 11" x 9" x 1"
- + PART NUMBER: 4037724



WASHABLE

- + SIZE: 11.4" x 9" x 0.75"
- + PART NUMBER: 4044385

▶ ADVANCE DRY110



MERV-13

- + SIZE: 17.5" x 14" x 1.75"
- + PART NUMBER: 4037722-01

▶ ULTRA70



MERV-13

- + SIZE: 11" x 9" x 1"
- + PART NUMBER: 4037724

▶ ULTRA V205



MERV-13

- + SIZE: 17.5" x 17.5" x 1.75"
- + PART NUMBER: 4042787



PRE-FILTER

- + SIZE: 11" x 9" x .25"
- + PART NUMBER: 4027168

▶ OASIS™ 105



MERV-13

- + SIZE: 14" x 12" x 1"
- + PART NUMBER: 4042005

▶ CLASSIC



MERV-13

- + SIZE: 16" x 20" x 2"
- + PART NUMBER: 4039391

▶ ULTRA V100 / V125 / V155



MERV-13

- + SIZE: 17.5" x 14" x 1.75"
- + PART NUMBER: 4037722-01

▶ ULTRAMD33



WASHABLE

- + SIZE: 11" x 12.6" x 0.1"
- + PART NUMBER: 4037714

Santa-Fe dehumidifiers are equipped with the best filtration on the market. Our standard MERV-13 filters capture harmful contaminants in the air and keep the units running at peak efficiency.



INSTALLATION ACCESSORIES

▶ DEH 3000 / 3000R CONTROL



- + **DEH 3000 PART NUMBER:** 4028539
- + **DEH 3000R PART NUMBER:** 4028407
- + **COMPATIBLE DEHUMIDIFIERS:**
 - All Ultra Series except the UltraMD33

▶ SMARTAIRE™ REMOTE SENSOR



- + **PART NUMBER:** 4044000
- + **COMPATIBLE DEHUMIDIFIERS:**
 - Advance Dry110, Ultra V100, Ultra V125 and Ultra V155

▶ HANG KITS



- + **PART NUMBER:** 4036695
- + **COMPATIBLE DEHUMIDIFIERS:**
 - Compact70
 - Ultra70

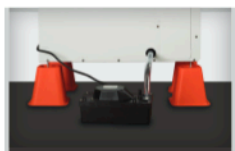


- + **PART NUMBER:** 4042835
- + **COMPATIBLE DEHUMIDIFIERS:**
 - Oasis105



- + **PART NUMBER:** 4044745
- + **COMPATIBLE DEHUMIDIFIERS:**
 - Advance Dry110
 - Ultra V100
 - Ultra V125
 - Ultra V155

▶ CONDENSATE PUMPS



- + **PART NUMBER:** 4022220
- + **COMPATIBLE DEHUMIDIFIERS:**
 - All Santa-Fe dehumidifiers except the Ultra MD33

▶ DEHUMIDIFIER RISERS



- + **PART NUMBER:** 4042109
1-Pack (4 Risers/Pack)
- + **PART NUMBER:** 4041602
10-Pack (4 Risers/Pack)
- + **COMPATIBLE DEHUMIDIFIERS:**
 - All except the Classic and UltraMD333

▶ SMARTAIRE™ POWER DAMPER

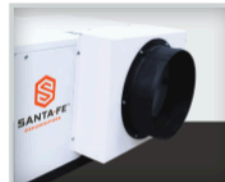


- + **PART NUMBER:** 4042960
- + **COMPATIBLE DEHUMIDIFIERS:**
 - All Ultra Series dehumidifiers except the UltraMD33

▶ DUCT KITS



- + **COMPACT70**
- + **RETURN DUCT KIT**
PART NUMBER: 4030204
- + **SUPPLY DUCT KIT**
PART NUMBER: 4030203



- + **OASIS™105**
- + **SUPPLY DUCT KIT**
PART NUMBER: 4042275
- + **SUPPLY AND RETURN DUCT KIT**
PART NUMBER: 4042265



- + **ADVANCE DRY110**
- + **SUPPLY DUCT KIT**
PART NUMBER: 4033039



- + **CLASSIC**
- + **SUPPLY DUCT KIT**
PART NUMBER: 4020623

PRODUCT

SET IT + FORGET IT.

Santa-Fe offers a full line of portable dehumidifiers. What does this mean? It means a quick solution to protect your investment. With no buckets to empty.

Applications include:



- + Basements
- + Crawl Spaces
- + Attics
- + Garages
- + Theater/Multi-Use Areas
- + Workshops
- + Storage Rooms
- + Exercise Rooms



SANTA-FE™

6-YEAR TOTAL PEACE OF MIND WARRANTY

5-YEAR FULL REPLACEMENT + 1-YEAR PARTS

	COMPACT70	OASIS105
		
@ 80°F / 60%RH WATER REMOVAL	70 PINTS/DAY 8.75 GALLONS/DAY	102 PINTS/DAY 12.75 GALLONS/DAY
EFFICIENCY	5.5 PINTS/KWH	7.5 PINTS/KWH
ENERGY FACTOR	2.6 L/KWH	3.54 L/KWH
@ 65°F / 60%RH WATER REMOVAL	43.7 PINTS/DAY 5.4 GALLONS/DAY	67 PINTS/DAY 8.37 GALLONS/DAY
EFFICIENCY	4.1 PINTS/KWH	5.95 PINTS/KWH
ENERGY FACTOR	1.96 L/KWH	2.81 L/KWH
CURRENT DRAW	3.7 AMPS*	6.1 AMPS*
REFRIGERANT	R454B	R454B
AIR FILTER	MERV-13	MERV-13
DIMENSIONS	12" W 12" H 21" D	24" W 14.5" H 16" D
WEIGHT	55 LBS.	59 LBS.
SIZED FOR CRAWL SPACES	UP TO 2,600 FT ² TIGHTLY SEALED UP TO 2,200 FT ² MODERATELY SEALED UP TO 1,800 FT ² LOOSELY SEALED	UP TO 3,300 FT ² TIGHTLY SEALED UP TO 2,900 FT ² MODERATELY SEALED UP TO 2,500 FT ² LOOSELY SEALED
SIZED FOR BASEMENTS	UP TO 2,200 FT ² TIGHTLY SEALED UP TO 2,000 FT ² MODERATELY SEALED UP TO 1,800 FT ² LOOSELY SEALED	UP TO 2,600 FT ² TIGHTLY SEALED UP TO 2,400 FT ² MODERATELY SEALED UP TO 2,200 FT ² LOOSELY SEALED
WARRANTY	6 YEARS	6 YEARS

*@ 65°F / 60%RH
** @ 80°F / 60%RH



LINE UP

ADVANCE DRY110

CLASSIC



110 PINTS/DAY
13.75 GALLONS/DAY

116 PINTS/DAY
14.5 GALLONS/DAY

7.7 PINTS/KWH

7.27 PINTS/KWH

3.66 L/KWH

3.43 L/KWH

70 PINTS/DAY
8.75 GALLONS/DAY

76 PINTS/DAY
9.5 GALLONS/DAY

5.92 PINTS/KWH

5.9 PINTS/KWH

2.81 L/KWH

2.8 L/KWH

4.1 AMPS*

4.5 AMPS*

R454B

R454B

MERV-13

MERV-13

14.35" W
24" H
29" D

20" W
36" H
17" D

102 LBS.

110 LBS.

UP TO **3,600** FT²
TIGHTLY SEALED

NOT APPLICABLE
TO CRAWL SPACES

UP TO **3,200** FT²
MODERATELY SEALED

UP TO **2,800** FT²
LOOSELY SEALED

UP TO **2,900** FT²
TIGHTLY SEALED

UP TO **2,900** FT²
TIGHTLY SEALED

UP TO **2,700** FT²
MODERATELY SEALED

UP TO **2,700** FT²
MODERATELY SEALED

UP TO **2,500** FT²
LOOSELY SEALED

UP TO **2,500** FT²
LOOSELY SEALED

6 YEARS

6 YEARS

ULTRAMD33



@ 80°F / 60%RH
WATER REMOVAL

37 PINTS/DAY
4.6 GALLONS/DAY

EFFICIENCY

5.1 PINTS/KWH

ENERGY FACTOR

2.4 L/KWH

@ 65°F / 60%RH
WATER REMOVAL

22 PINTS/DAY
2.75 GALLONS/DAY

EFFICIENCY

3.46 PINTS/KWH

ENERGY FACTOR

1.64 L/KWH

CURRENT DRAW

2.2 AMPS*

REFRIGERANT

R454B

AIR FILTER

WASHABLE

DIMENSIONS

14.19" W
30" H
5.75" D

WEIGHT

39 LBS.

SIZED FOR IN-WALL APPLICATIONS




UP TO **1,200** FT²

WARRANTY

6 YEARS



The UltraMD33 In-Wall Dehumidifier is ideal for multi-family applications, basements, hotels and other spaces needing dehumidification.

PRODUCT

	ULTRA 70	ULTRA V100	ULTRA V125
			
@ 80°F / 60%RH WATER REMOVAL	70 PINTS/DAY 8.75 GALLONS/DAY	100 PINTS/DAY 12.6 GALLONS/DAY	125 PINTS/DAY 15.5 GALLONS/DAY
EFFICIENCY	5.5 PINTS/KWH	6.4 PINTS/KWH	5.9 PINTS/KWH
ENERGY FACTOR	2.6 L/KWH	3.0 L/KWH	2.8 L/KWH
@ 73°F / 60%RH WATER REMOVAL	52.5 PINTS/DAY 6.5 GALLONS/DAY	82 PINTS/DAY 10.25 GALLONS/DAY	101 PINTS/DAY 12.6 GALLONS/DAY
EFFICIENCY	4.3 PINTS/KWH	5.55 PINTS/KWH	5.2 PINTS/KWH
ENERGY FACTOR	2.04 L/KWH	2.63 L/KWH	2.45 L/KWH
CURRENT DRAW*	5.4 AMPS	8.0 AMPS	10.2 AMPS
REFRIGERANT	R454B	R454B	R454B
BLOWER	150 CFM @ 0.0" WG 140 CFM @ 0.2" WG 130 CFM @ 0.4" WG	385 CFM @ 0.0" WG 350 CFM @ 0.2" WG 305 CFM @ 0.4" WG	385 CFM @ 0.0" WG 350 CFM @ 0.2" WG 305 CFM @ 0.4" WG
AIR FILTER	MERV-13	MERV-13	MERV-13
DIMENSIONS	12" W 12" H 28" D	14.35" W 24" H 39.25" D	14.35" W 24" H 39.25" D
WEIGHT	55 LBS.	101 LBS.	104 LBS.
SIZING	UP TO 1,800 FT. ²	UP TO 2,300 FT. ²	UP TO 3,000 FT. ²
WARRANTY	6 YEARS	6 YEARS	6 YEARS



LINE UP

ULTRA V155	ULTRA V205
	
155 PINTS/DAY 19.3 GALLONS/DAY	205 PINTS/DAY 25.625 GALLONS/DAY
7.1 PINTS/KWH	7.5 PINTS/KWH
3.35 L/KWH	3.5 L/KWH
128 PINTS/DAY 16 GALLONS/DAY	173 PINTS/DAY 21.6 GALLONS/DAY
6.5 PINTS/KWH	6.3 PINTS/KWH
3.08 L/KWH	3.0 L/KWH
10.0 AMPS	11.9 AMPS
R454B	R454B
435 CFM @ 0.0" WG 395 CFM @ 0.2" WG 360 CFM @ 0.4" WG	550 CFM @ 0.0" WG 515 CFM @ 0.2" WG 470 CFM @ 0.4" WG
MERV-13	MERV-13
14.35" W 24" H 39.25" D	26.75" W 20.75" H 38" D
112 LBS.	148 LBS.
UP TO 3,500 FT. ²	UP TO 5,000 FT. ²
6 YEARS	6 YEARS

*@ 104°F / 36%RH

DUCT + VENTILATE.

The Ultra Series focuses on providing dehumidification to the entire home.

In addition, it provides the option to ventilate a home, with the purpose of maintaining a healthy and safe living environment.



SANTA-FE™

6-YEAR TOTAL PEACE OF MIND WARRANTY

5-YEAR FULL REPLACEMENT + 1-YEAR PARTS

