

FEATURED IN

HOME & DESIGN[®]

Luxury Homes | Interior Design | Home Furnishings



Spring 2026

TAILORED FOR LIFE

CUSTOM LAKESIDE ESTATE,
BUILT FOR COMFORTABLE LUXURY



Living Room (Previous Spread): A four-panel backlit walnut dropped ceiling and matte-black porcelain feature wall define the living room, cleverly concealing the television to let architecture take center stage. A long stone ledge doubles as extra seating, while sleek neutral furniture lets the architecture and finishes take center stage. "It was really about making the architecture and finishes the stars," notes Diana Hall, Principal of Diana Hall Design. "The furniture is neutral and sleek, so the backgrounds shine." Expansive 12-foot sliders pocket seamlessly into the walls, a deliberate architectural move to erase the boundary between indoors and outdoors. Travertine flooring from Abbey Carpet & Floor forms a seamless base that flows indoors and out, complemented by a spacious sectional for effortless seating.



Foyer: The grand entryway establishes the home's gallery-like character with soaring ceilings, sculptural light fixtures from MOD Lighting, and travertine floors inlaid with pebble details. Dramatic sightlines extend straight through to the pool and lake beyond, amplified by backlit mirrors, pedestal displays, and ceiling patterns echoed in the flooring. Floor-to-ceiling Andersen Windows & Doors — sourced via Florida Wood Window and Door — allow views to envelop the space. "It's not a traditional great-room entry," explains Residential Designer Richard Guzman of R.G. Designs. "We crafted an expanded reception foyer that frames the water view instantly while shielding the living areas for privacy."

In Bonita Bay, a community prized for its lush canopy and winding lakes, one newly built residence distinguishes itself. Elevated above the landscape and wrapped by water on nearly all sides, the home appears to hover at the lake's edge — an architectural expression that harmoniously integrates design, craftsmanship, and the natural surroundings.

The homeowners, longtime admirers of the work of Residential Designer Richard Guzman of R.G. Designs and Michael Diamond, President of Diamond Custom Homes, enlisted both teams to translate their favorite elements from past projects into a single, cohesive vision. Guzman developed the master plan to capitalize on the waterfront site, replacing a traditional front entry with an offset foyer that heightens privacy while capturing a long, uninterrupted view across the pool to the lake. Porcelain cladding, cypress-stained ceilings, and dark-framed windows give the exterior a crisp modern profile, tempered by a timeless pitched roof. "We wanted the house to feel like it sat right on the water," Guzman says. "From the moment you step inside, the sightline takes you straight through the foyer, across the pool, and out to the waterfront." ▶

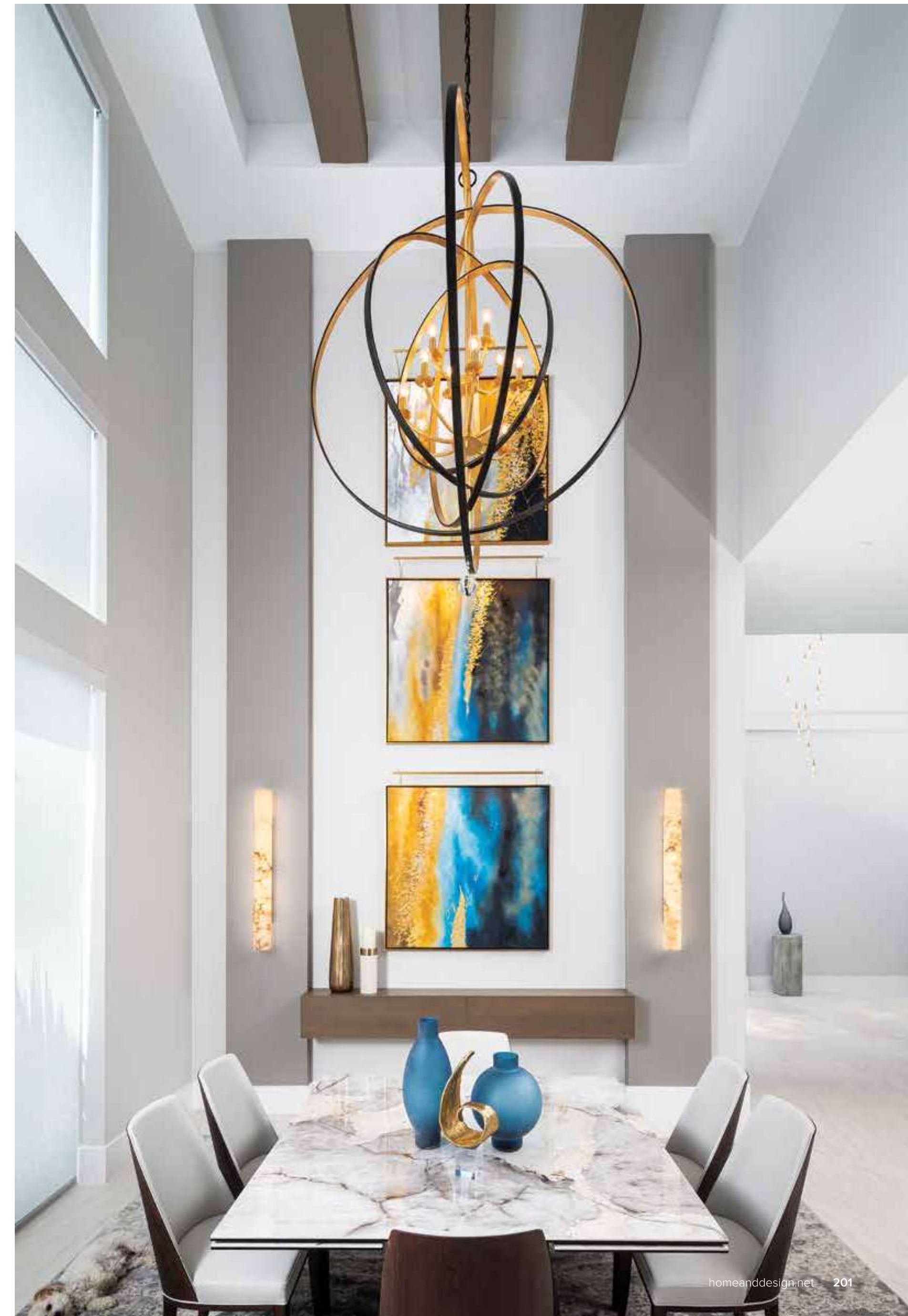
Front Elevation: The home's front elevation blends refined architecture with inviting warmth, establishing a signature modern coastal sensibility from the street. Smooth porcelain cladding pairs with stained-wood ceilings and crisp white trim for an effortlessly chic, enduring profile. Gracefully elevated, it presents a stately silhouette while hinting at the lakeside drama beyond—where thoughtful proportions, layered materials, and graphic lines convey timeless craftsmanship.

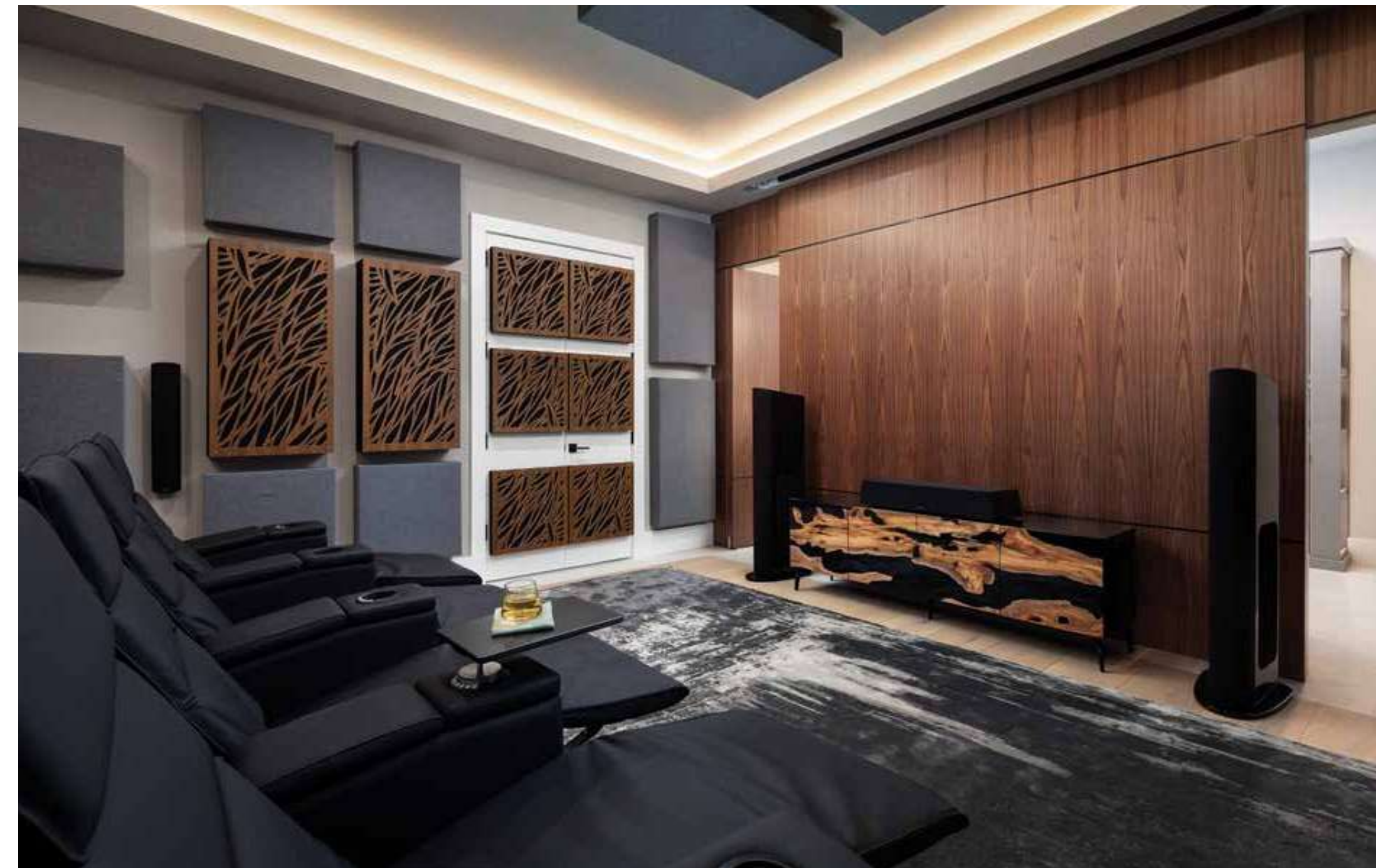


Diamond notes that the site introduced uncommon challenges, beginning with its position in a flood zone. To preserve the seamless lakeside perspective the clients envisioned, the team elevated both the finished floor and the pool, subtly lifting the entire experience. The homeowners also selected a geothermal HVAC system — an uncommon choice in this region, but integral to their priority on long-term efficiency. “It is a fabulous home,” Diamond remarks. “Unlike other homes we’ve crafted in golf course communities, this one distinguishes itself through its elevated foundation and the architecturally raised pool, delivering a unique presence and perspective.” ▶

Bar: Designed for a wine connoisseur, the bar showcases a climate-controlled wine room, backlit Cristallo countertops from Prestige Marble & Designs, and walnut cabinetry that flows seamlessly from the kitchen. Stacked marble behind the wine bottles introduces a subtle layer of texture, while refrigeration and appliances remain seamlessly concealed. Matching stools visually tie the bar to the kitchen, reinforcing the home’s cohesive design and underscoring the couple’s passion for collecting fine vintages.

Dining Room: Anchored by 20-foot ceilings, the dining room is scaled with columns, floating beams, and a Crystorama gold-and-black chandelier from Wilson Lighting that brings intimacy to the expansive space. A custom floating ledge offers clever storage, while the dining table extends effortlessly for larger gatherings. “They embraced the black-and-gold palette early — discovered while sourcing plumbing and lighting — and it threads seamlessly throughout the home,” explains Senior Designer Elizabeth Manchego of Diana Hall Design. The result is dramatic yet cohesive, tying into the adjoining kitchen and bar.





Inside, Diana Hall, Principal of Diana Hall Design, together with Senior Designer Elizabeth Manchego, collaborated meticulously on every detail, from exterior finishes to intricate interior moments. The result is a contemporary yet welcoming environment, defined by rich walnut cabinetry, polished surfaces, and refined black-and-gold accents. “Every element, from the acoustics in the theater to the carefully crafted niches in the outdoor shower, was thoughtfully designed to align with their lifestyle,” Manchego says. “The goal was to create a residence that is not only visually stunning but also deeply personal and uniquely tailored to their way of living.” ▶

Kitchen: A custom walnut kitchen island — clad in black metal and dramatically illuminated — blends warm midcentury modern lines with inventive engineering. Dual sinks and expansive seating positioned in front of the bar area enhance its generous scale and functionality. “The client is tall, so we raised all the countertops to thirty-eight inches,” Hall says. “It was important that it function for him since he does much of the cooking.” Hidden appliance garages and a concealed pantry entrance reveal the clients’ engineering-driven mindset, where technical ingenuity quietly elevates everyday living. Fuse Specialty Appliances & Plumbing appliances tuck discreetly behind sleek, book-matched walnut millwork, reinforcing the kitchen’s quietly luxurious aesthetic.

Theater Room: Engineered for superior acoustics, the theater room blends leather recliners with bar-height seating for versatile viewing. Rich walnut millwork wraps the walls, discreetly concealing pantry and bath doors to maintain a seamless, streamlined aesthetic. Acoustic panels, some laser-cut in wood and others upholstered in fabric, enhance sound quality. The flooring combines travertine with Legno Bastone Wide Plank Flooring, featuring 12-inch wide Trecento Coreca planks from the Trecento Collection, expertly installed by Naples Flooring Company to create a textured and elegant foundation. The space reflects the clients’ love of music and film, offering a personal retreat as refined as a commercial theater.





At the entry, sculptural lighting and soaring ceilings establish an elegant ambiance and introduce an artful gallery-like space. Beyond, the living, dining, and kitchen areas flow effortlessly beneath custom ceiling treatments, where warm walnut, porcelain tile, and Amazon travertine add texture and depth. Expansive sliding doors dissolve the boundary between inside and out, fully opening the living room to the lanai and pool for a seamless indoor-outdoor connection. ▶

Primary Bathroom & Outdoor Shower: Sleek cabinetry, oversized matte white porcelain tile from Prestige Marble & Designs, and a freestanding tub from Ferguson Home form the foundation of the primary bath. A seamless glass enclosure frames the walk-in shower with a built-in bench and niche, while sliding doors open to a private outdoor “garden shower” wrapped in floral porcelain tile and lush greenery. “The outdoor shower was an early concept I proposed,” Guzman says. “What might have remained an overlooked area behind the garage was transformed into a secluded garden retreat.”



Outdoor Living: A turquoise-tiled outdoor kitchen, dual-sided fireplace, and midcentury-inspired furnishings converge to transform the lanai into an inviting entertainment hub. The centerpiece is a dramatic 72-foot infinity-edge lap pool, accentuated by fountains cascading from the second floor. “The home was set about twelve feet above sea level, and we elevated the pool to match,” remarks Diamond. “From the lanai, it looks like you’re right on top of the lake.”

The outdoor space is anchored by a striking 72-foot infinity pool with a dedicated lap lane, graceful fountains, and a double-sided fireplace that echoes the turquoise-tiled summer kitchen. Guzman conceived the pool and spa in tandem with the architecture, incorporating a transparent fireplace as a dramatic focal point that wraps the open-air living area in warmth and intimate ambiance.

Landscape Architect Christian Andrea of Architectural Land Design refined the vision with grading and planting that gently ease the transition from pool to lake, further grounding the home in its setting. “We did our best to preserve existing mature vegetation where possible,” Andrea says. “That mature canopy gives Bonita Bay its signature skyline and completes the home’s connection to the setting.”

The project’s seamless execution, the team agrees, stemmed from long-term collaboration. “It’s like a marathon race where the guy hands the baton to you as you’re running through things,” Andrea says. “Rich set the vision and the tone, and then we picked it up and ran with it. We’ve worked together for more than twenty years, so we can finish each other’s thoughts.”

Diamond adds, “We work with the architect to develop the plans, and then once the client approves, we run with it through permitting. At the same time, Diana and her team handle the selections and finishes. It all went really smoothly — everyone did their part, and everything just came together perfectly.” ■