



# Amarr® Horizon H01000

## Modern Aluminum MultiView Garage Doors



Amarr Horizon H01000 with Dark Bronze finish and Frost glass

**Gain a unique perspective for your home.** The Amarr Horizon H01000 combines strong horizontal lines with long, narrow expanses of glass to make a distinctive design statement. These sleek, contemporary, aluminum doors are available with dozens of glazing and color options, so your choices are practically limitless, and the outlook is always bright.



Amarr Horizon H01000 with White finish and Bronze tint glass

### DOOR CONFIGURATIONS

#### FOR SINGLE PANE GLAZING

Up to 8'2" WIDE - 1 Panel



8'3"-16'2" WIDE - 2 Panels



16'3"-20'2" WIDE - 3 Panels

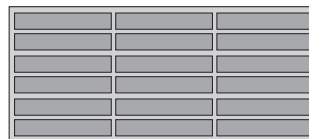


#### FOR INSULATED GLAZING

Up to 10'2" WIDE - 2 Panels

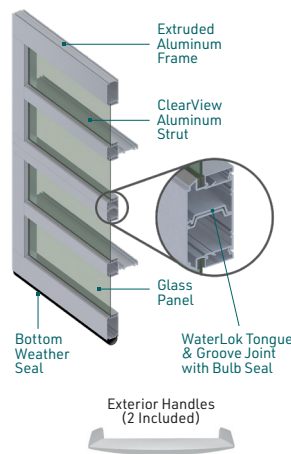


10'3"-16'2" WIDE - 3 Panels



16'3"-20'2" WIDE - 4 Panels





## ALUMINUM HO1000

**An Amarr Horizon HO1000 multiview door offers unique styling to match any modern architecture.**

- Extruded aluminum frame provides durability, low maintenance and corrosion resistance
- WaterLok** joint sealing system featuring new and improved wide tongue and groove section joints with leading-edge bulb seal and bottom weather seal for enhanced air-tight and water-resistant performance
- ClearView Aluminum Strut System does not restrict viewing area and adds strength and durability
- Equal glass heights in all sections of a door
- Glass expands up to 8'2" wide

## Specifications

	AMARR HORIZON HO1000
<b>FRAME CONSTRUCTION</b>	2" thick aluminum
<b>SECTION HEIGHTS</b>	Varies by door height
<b>DOOR WIDTHS</b>	2' – 20' 2" (in 1" increments)
<b>DOOR HEIGHTS</b>	6' – 20' 1"
<b>CLEARVIEW STRUT SYSTEM</b>	Only required for doors ≥ 16'
<b>WIND LOAD<sup>1</sup> AVAILABLE</b>	•
<b>FINISH WARRANTY<sup>2</sup></b>	5 Years
<b>WORKMANSHIP WARRANTY<sup>2</sup></b>	5 Years
<b>HARDWARE WARRANTY<sup>2</sup></b>	5 Years

<sup>1</sup> It is your responsibility to make sure your garage door meets local building codes.

<sup>2</sup> For complete warranty details, visit [amarr.com](http://amarr.com) or contact your local Amarr dealer.

## Door Configurations

For Single Pane Glazing		
Door Width	# Center Stiles	# Windows/Section
Up to 8' 2"	0	2
8' 3" – 16' 2"	1	4
16' 3" – 20' 2"	2	6

For Insulated Glazing		
Door Width	# Center Stiles	# Windows/Section
Up to 10' 2"	1	4
10' 3" – 16' 2"	2	6
16' 3" – 20' 2"	3	8

## Glazing Options

	Single Pane											Insulated	
	Tempered				Lami- nated	Polycarbonate			Acrylic			Tempered	
	3/16"	3/16" Low-E	1/4"	1/4" Low-E	1/4"	Single 1/8"	Single 1/4"	Tri-Wall 5/8"	1/8"	1/4"	1/2"	1/2"	1/2" Low-E
CLEAR	•	•	•	•		•	•	•	•	•	•	•	•
OBSOURE	•												
GREEN			•									•	•
BRONZE	•		•					•				•	•
GRAY	•		•									•	•
GREYLITE	•		•									•	•
FROST	•		•					•				•	
SNOW					•			•					
WHITEOUT					•								
BLACKICE					•								

Door specifications and technical data subject to change without notice.

Amarr as word and logo are trademarks belonging to Amarr Company, owned by ASSA ABLÖY.

Sectional door products from Amarr Company may be the subject of one or more U.S. and/or foreign, issued, and/or pending, design and/or utility patents

©ASSA ABLÖY. Printed in USA  
Form #6370325/10M/RRD

Part of ASSA ABLÖY

## Colors

Actual color may vary from samples shown.

### IN STOCK FINISHES

#### ANODIZE



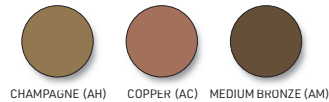
#### PAINT



### SPECIAL ORDER FINISHES

Longer lead time and price upcharge may apply.

#### ANODIZE



#### PAINT

PVDF (Kynar®) & Powder Coat



**RAL and custom paint colors available. Price upcharge and additional lead time apply.**

†PVDF only.

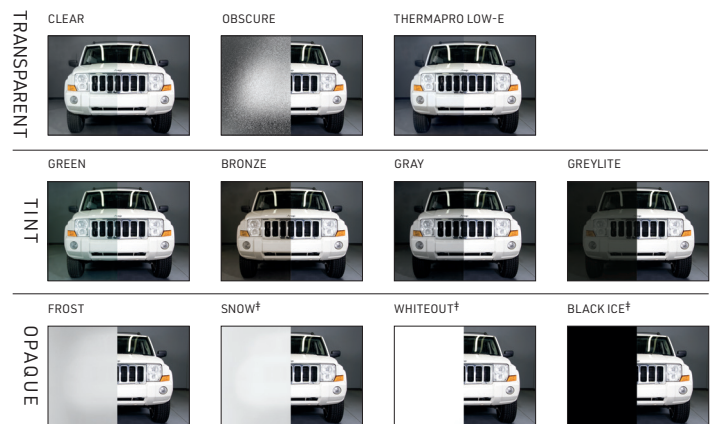
	PVDF (Kynar®)	Powder Coat
<b>FADE RESISTANT</b>	++	+
<b>CORROSION RESISTANT</b>	++	+
<b>UV RESISTANT</b>	++	+
<b>ABRASION RESISTANT</b>	+	++
<b>STANDARD COLORS</b>	26	21
<b>RAL/CUSTOM COLORS PRICE UPCHARGE</b>	\$	\$\$
<b>TOUCH-UP PAINT</b>	Included	NOT included



Longer lead time and price upcharge apply.

## Glass

Glass is tempered and available as single pane or insulated.



†Laminated, not tempered. Insulated glass not available.

### Amarr Company

165 Carriage Court  
Winston-Salem, NC 27105  
800.503.DOOR  
[www.amarr.com](http://www.amarr.com)

### FOR TECHNICAL QUESTIONS:

1.866.366.4814



YOUR LOCAL AMARR DEALER: