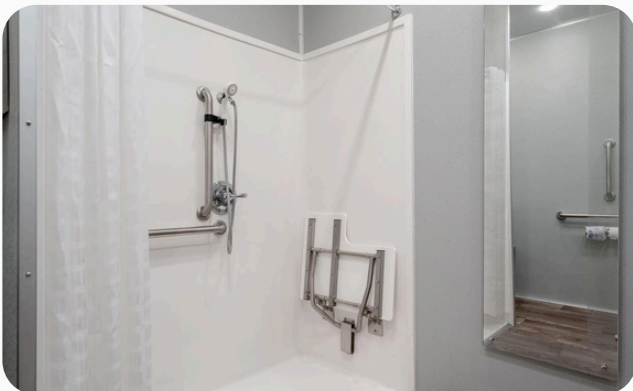




ADA + 1 SHOWER COMBO TRAILER



Designed for accessibility and built with comfort in mind, our ADA + 1 shower combo trailer ensures every guest has a safe and refreshing experience. The ADA-compliant station features a wide entry door, sturdy handrails, and an easy-to-navigate ramp, while the standard private shower stall offers durable fixtures, a sink, and practical lighting.

Perfect for events, job sites, or disaster relief, this compact yet versatile trailer provides inclusive amenities and reliable performance — giving every guest the opportunity to refresh with ease and comfort.



**We offer live assistance 24/7 – Lets give your guests
the luxury they deserve!**

No. of Stations: 2

Length: **12'**

Width: 8'6"

Ride Height with AC: **11'**

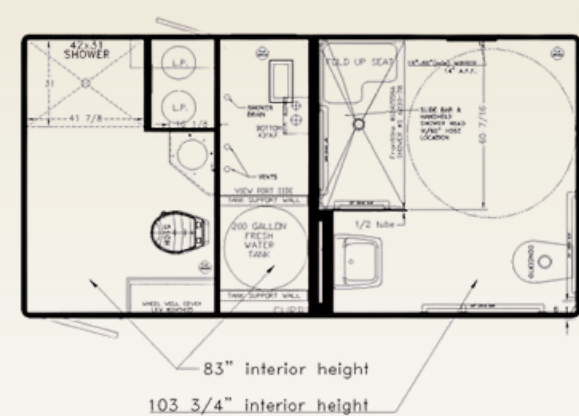
Freshwater: **200 gal**

Wastewater: 330 gal

Weight: 7,000 lbs

Axle: 8,000 lb torsion

Wheels: **16" aluminum**



8 X 12'

POWER REQUIREMENTS: 2-20 amp dedicated breaker with 2-110 outlets