



Contact Exterior Custom Solutions LLC
for more information.

(920) 636-6992

525 Wick Ct
Neeenah, WI 54956

www.ExteriorCustomSolutions.com

Thank you for considering
Lexington Windows.



Rev (09/20)

A TRADITION OF QUALITY SINCE 1947

Lindsay Windows began over 73 years ago as a privately held, family-owned company, which it still is today. Our mission has always been to manufacture the highest quality products using materials with advanced manufacturing equipment and procedures.

Our products are industry certified and distributed through a network of qualified dealers. All of our products exceed the current standards for ENERGY STAR compliance and have some of the best ratings in the industry.

Our modern production facilities - Minnesota, Missouri, Illinois, Georgia, Washington, and California - manufacture vinyl window and door products in their corresponding geographical markets. We value our employees and consider every employee a salesperson for our company. It is a privilege to provide you with the finest products on the market. This includes products with exceptional energy performance, guaranteed warranties, and all at the best value available. Our best testimonies come from our thousands of satisfied customers. We want you to be one of them.

Our prices reflect our commitment to craftsmanship, advanced materials, and superior performance. We have proudly served, as the third owners of Lindsay Windows, for more than the past 30 years.

Thank You,

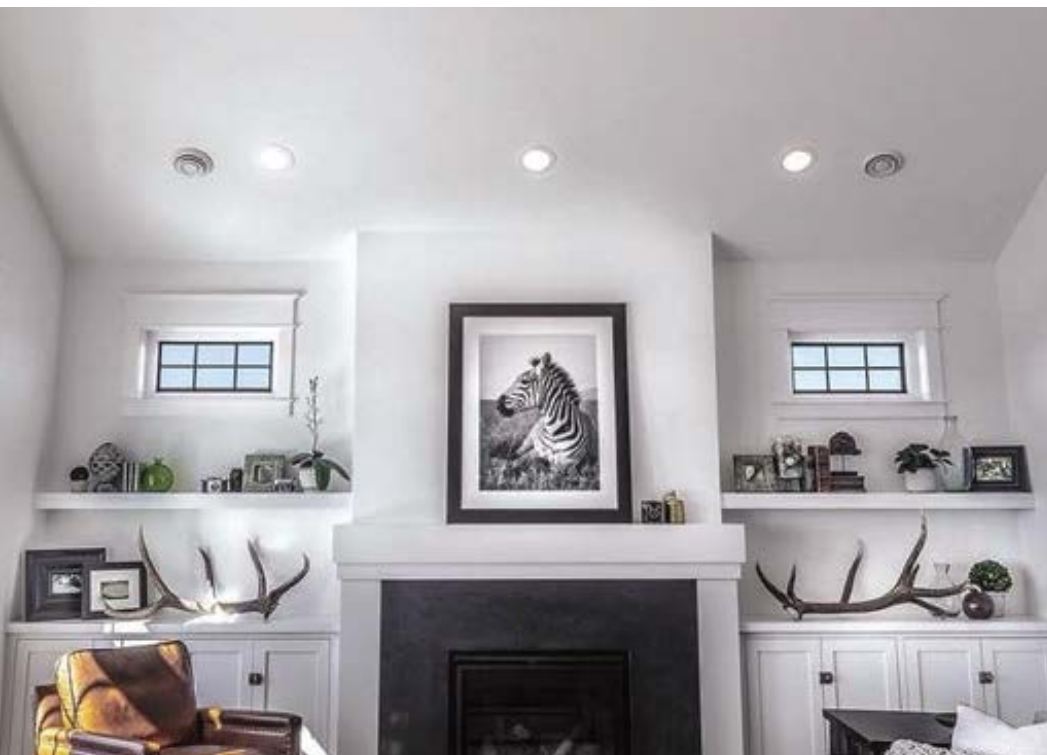
John, Geoff, and the whole Lindsay Team

*We enthusiastically
look forward to your order!*



Lexington Windows





INNOVATION

MEETS ELEGANCE, EFFICIENCY AND SECURITY.

Lexington



Choosing windows for your home is one of the most important decisions you can make as a homeowner. You want the most attractive, durable, and efficient window available to keep you comfortable and build value in your home. The Lexington Window is the ultimate model of the Exterior Custom Solutions LLC family. It incorporates innovative design and manufacturing with architectural appeal that compliments any home's style. Lexington's elegant styling, energy efficiency, strength, and protection ensures that your new windows will be a wise investment for your home.

EXTERIOR OPTIONS

BRICK MOULD AND TRIM

Enhance the exterior of your home by choosing one of our exterior trim options.



TWO PART BRICK MOULD
(Welded at all four corners)



TWO PART BRICK MOULD WITH SILL NOSE
(Welded at top two corners)



3-1/2" EXTERIOR TRIM
(Welded at all four corners)

INTERIOR OPTIONS

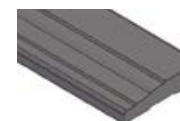
EXTENSION JAMB AND WINDOW CASING



2-1/4" RANCH STYLE



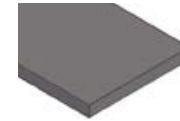
2-1/4" COLONIAL STYLE



3-1/4" COLONIAL STYLE



1/2" x 3/4" BASE SHOE TRIM



EXTENSION JAMB

EXTENSION JAMB COLORS



BASE SHOE/CASING COLORS



Actual colors may vary. White can be wood based, laminate or solid vinyl.



At Exterior Custom Solutions LLC, we are committed to being environmentally engaged and responsible throughout the vinyl window manufacturing process, as well as how we go about our daily business. Our vinyl windows do not require the elimination of trees, harmful paints or stains, and have an environmentally-friendly extended life cycle. These qualities help to lower consumption and decrease waste in our production. Their high performance reduces the energy used in homes and their components are recyclable. Our window manufacturer, Lindsay Windows, promotes a culture that embraces energy-saving technologies, recycling, and environmental awareness as a part of everyone's responsibility of helping to preserve our world. Their commitment to reducing waste and improving recycling earned them the Minnesota Waste Wise Leader Award.



PROVEN QUALITY



ENERGY STAR® APPROVED

Lexington Windows are designed to meet the rigorous ENERGY STAR standards. Lexington Windows have options to meet and exceed the new standards in all of the ENERGY STAR regions. Lexington Windows are designed to reduce energy consumption, prolong the life of your furnace and air conditioner, help the environment, and provide additional comfort for you in your home. Since 1947, we have worked hard to design and manufacture energy efficient windows for your home.



EARTHWISE™

Lindsay Windows was a founding member of the Earthwise™ Group in 2003. This group of manufacturers work collaboratively to help lower costs and share ideas related to purchasing, operations, marketing, customer satisfaction, and window testing. Through this membership, Lexington Windows carry the Good Housekeeping and Made In USA Certified seals.



MADE IN USA CERTIFIED

Lexington Windows are not only manufactured and assembled in the USA, but incorporate a significant percentage of materials from suppliers in the United States. While Made in USA certification calls for 75% of the value of the window to be made and produced in the United States, our goal is to exceed 95%. Primary materials produced in the United States are window extrusions, glass, weatherstrip, screen mesh, reinforcement, and glass spacer. In 2012, we switched our screen mesh supplier because they moved their manufacturing facility outside of the United States. We take pride in the quality of the materials we purchase to build windows for your home.



GOOD HOUSEKEEPING SEAL OF APPROVAL

Lexington Windows proudly carry the Good Housekeeping seal of approval. Among the most recognized brands in America, Good Housekeeping and the Good Housekeeping Institute have evaluated Earthwise™ Windows to meet the criteria for the Good Housekeeping Seal. Lexington Windows have carried the seal since 2006.

LIFETIME LIMITED WARRANTY

Since 1947, the manufacturer of Lexington Windows has offered industry-leading warranties for their products. Today, Lexington Windows have a lifetime limited warranty that is non-prorated and is transferable. The warranty covers everything on the window for as long as you own your home. See warranty information for details and specific limitations.

DESIGN & COLOR OPTIONS

GRID PATTERNS AND TYPES

Enhance the look of your home with distinctive grid styles. All grids are between the glass—making cleaning easy. Simply choose a grid pattern and type below to accent your new windows and make them your own. Another option is simulated divided lites, which apply to the glass surface on the interior and exterior giving a traditional colonial window appearance.

GRID PATTERNS



COLONIAL



DIAMOND



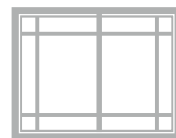
SUSPENDED



PRAIRIE



PERIMETER ON DOUBLE HUNG



PERIMETER ON SLIDER

The number of grids used in the colonial (standard) and diamond patterns vary depending on window size. All the above are available as simulated divided lites.

GRID TYPES



FLAT



SCULPTURED



V-GROOVE



SIMULATED DIVIDED LITE

COLOR CHOICES

Many color and laminate combinations are available. Choose from same exterior and interior solid vinyl colors, interior laminate woodgrains, interior solid color laminations, or exterior and interior paint coatings. Warranty covers laminates and paints. See warranty for details. Actual colors may vary from those shown.

EXTERIOR/INTERIOR COLORS



WHITE



SANDSTONE



CLAY



BLACK



BRONZE

INTERIOR LAMINATES

EXTERIOR/INTERIOR PAINT COATINGS

*Custom color matching and custom laminate colors are available for larger jobs.



CREAM WHITE



PARCHMENT



BUTTER-CREAM



LINDSAY SANDSTONE



CLAY 145



TERRATONE



LINDSAY EARTHTONE



LINDSAY GREEN



BRICK RED



ROYAL BROWN



MOUNTAIN RIDGE



LINDSAY BRONZE



STORM GRAY



MIDNIGHT BLACK



CUSTOM*

INTERIOR LAMINATE WOODGRAINS



GOLDEN MAPLE



LIGHT OAK



DARK OAK



CHERRY



WALNUT

Jamb and casing available in same colors as windows including wood grains.

OBSOURE GLASS

Obscure glass is commonly used in bathrooms to distort the image behind the glass.



NORMAL VIEW



STANDARD OBSCURE



AQUA



RAIN

HARDWARE COLOR

Customize your window look by choosing from a wide selection of hardware colors.



BRUSHED CHROME



BRASS



BLACK



ANTIQUE BRASS



SATIN NICKEL



BRONZE



CLAY



SANDSTONE



WHITE

Actual colors may vary from those shown.

Casement and Awning:

Brass, Black, Antique Brass, Satin Nickel, Bronze, Clay, Sandstone, and White

Double Hung and Sliders:

Antique Brass, Satin Nickel, Bronze, Clay, Sandstone, and White

Patio Handles:

Brushed Chrome, Brass, Black, Antique Brass, Satin Nickel, Bronze, Clay, Sandstone, and White

PERFORMANCE

ENTECH INSULATING GLASS

EnTech insulating glass units deliver the ideal energy balance of solar heat control, high visibility, and fade protection. With gas filled chambers and Low-E coatings, our windows provide high levels of year-round comfort and energy savings.



	Glass Package	Pieces of Glass	Silver Layers	Gas Filler	Neat® Glass	Northern Region ENERGY STAR®	U-Value	SHGC	VT	DP
STANDARD	EnTech Pro EnTech Pro is a dual-glazed, soft coat Low-E glass unit.	2	3	Argon	Yes	Meets Standard	.27	.20	.48	50
OPTIONAL	EnTech Peak EnTech Peak is a top-of-the-line insulating glass unit. Not available in single hung or single slider.	3	5	Argon (standard) Krypton (optional)	Yes	Exceeds Standard	.17	.18	.34	50

Plus (EnTech+, EnTech Pro+, and EnTech Peak+)

Add the plus feature to any of the above glass packages to obtain additional Low-E coating on the interior. The interior piece of glass is a hard coat Low-E. This option improves the EnTech or EnTech Pro u-value between .03 and .05.

Performance numbers shown for dual glazed windows (EnTech Peak is triple-glazed) without grids. Manufacturer reserves the right to modify materials that impact ratings. ENERGY STAR criteria is based on the rigorous Northern climate zone.

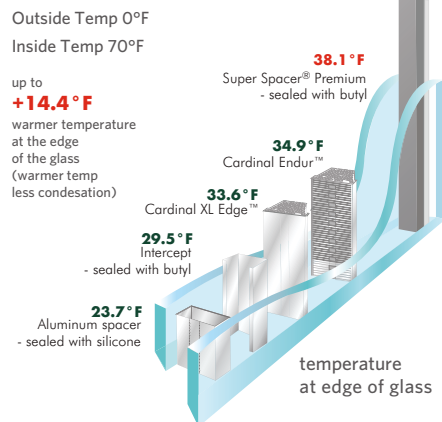
*Neat® is an invisible, durable and, permanent coating that helps your windows stay clean longer. It uses the sun's UV rays to loosen dirt so water can rinse it away.

** Meets Northern Energy Star Standard with different option in windows. Please contact for more information.

***Results listed are for the North-Central, South-Central, and Southern regions for Energy Star. The Northern Region implements new standards. Check with your dealer for further information.

WARM EDGE SPACER TECHNOLOGY

Lexington's spacer technology incorporates a warm edge seal product that reduces condensation, frosting, and mold growth while providing high levels of energy performance. Additional features include superior argon or krypton retentions and durability under extreme conditions.



MORE PERFORMANCE FEATURES



Mold Resistant Weatherstrip

The average Lexington double hung window has over 30 feet of mold resistant weatherstrip. This specially formulated weatherstrip resists and kills allergy-aggravating, micro-particles of pollen, fungi, mold, mildew, and bacteria. It also helps reduce outside noise and infiltration of exterior gases, such as carbon monoxide.



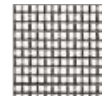
Innergy™ Reinforcement

Innergy™ Thermal Reinforcements are advanced non-metallic composite fiberglass reinforced resin inserts, specially designed to fit into window chambers for greater support and insulation.

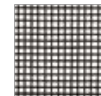
SCREENS

CHOOSE FROM THESE SCREENS

Lexington windows come standard with a miter cut extruded heavy-duty screen frame. Screens are removable from the inside and the screen fits inside the channel of the window frame. Choose from Standard Fiberglass, Clear View Screen Mesh, Pet Screen, or Charcoal Aluminum.



STANDARD FIBERGLASS



CLEAR VIEW FIBERGLASS



PET SCREEN



CHARCOAL ALUMINUM

Clear View Screen Advantages:

- ▶ Allows more light through than the standard screen mesh
- ▶ Uses a finer gauge of fiberglass strand than the standard screen mesh
- ▶ Clear View Screen Mesh has more strands providing a tighter weave that keeps the bugs out
- ▶ Optional for all windows that use a screen

TRY THIS REVOLUTIONARY SCREEN FROM FLEXSCREEN

FlexScreen Advantages:

- ▶ Simple design uses a PVC coated, high-performance spring steel frame.
- ▶ FlexScreen is damage resistant. No more bent aluminum frames, scratched paint, or broken hardware.
- ▶ Effortless installation
- ▶ FlexScreen's frame is not visible. It improves sight lines, by hiding in the window screen pocket, and eliminates the need for color matching.
- ▶ Lifetime warranty directly from FlexScreen
- ▶ Available in Standard and Clear View Mesh.
- ▶ Optional for all windows



GEOMETRIC



Make your home unique with geometric windows. Many special shapes and window configurations are available, including:

- ▶ Circle
- ▶ Arch Top
- ▶ Octagon
- ▶ Ellipse
- ▶ Half Round
- ▶ Trapezoid
- ▶ Quarter Round
- ▶ Custom Shapes

BASEMENT



Basement Window from Inside (closed)



Basement Window from Inside (open)

BLINDS

CASEMENT BLIND OPTIONS with Low E Glass



WHITE



TAN (CLAY)



SAND (SANDSTONE)



ESPRESSO



SILVER MOON



SLATE GRAY



WINDOW STYLES

DOUBLE HUNG

Lexington double hung windows are exceedingly beautiful—the most common choice for homeowners. Double hung windows contain two sashes, which both open for venting and cleaning.

These windows will not only enhance the look of your home, but provide excellent protection from the outside elements.

- Lexington double hung windows feature:
- ▶ Top and bottom sashes operate and tilt in for easy cleaning
 - ▶ Refrigerator type seals to enhance window performance
 - ▶ Extruded mitered screen frames. Optional FlexScreen
 - ▶ Three weatherstrip layers to reduce air and sound infiltration
 - ▶ Foam enhanced frame and sash to improve energy performance
 - ▶ Several standard interior and exterior colors with optional coating of any color
 - ▶ Magnetic "refrigerator" seal on bottom sash to seal sash to frame



Tilt-in window for easy cleaning from inside.



Sash vents limit the opening of the bottom sash.



Foam blocks reduce air infiltration.



Double Hung



Twin Double Hung

SLIDER

Lexington slider windows have a clean and simple design that adds style to your home. They provide years of worry-free operation, excellent ventilation, and durable vinyl that is built to last. Sashes can be removed for cleaning. On the slide-n-swing, the sashes swing in for easy cleaning.

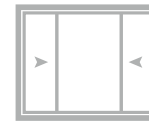
- Lexington slider windows feature:
- ▶ Durable brass adjustable rollers
 - ▶ Three pieces of weatherstrip to minimize air infiltration
 - ▶ Superior visibility for a better view
 - ▶ Most economical window for enhancing a larger opening
 - ▶ Engineered weepage system to enable water drainage and minimize air infiltration
 - ▶ Configurations include 2-lite, 1/5-1/5-1/5, and 1/4-1/2-1/4



1/5-1/5-1/5 Configuration



2-Lite Slider



1/4-1/2-1/4 Configuration

PICTURE

Lexington picture windows provide a calm, peaceful environment that muffles outside noise. These windows have a clean look and allow for maximum light and view to the outdoors.

- Lexington picture windows feature:
- ▶ Superior visibility to the outside
 - ▶ Non-operable and very energy efficient
 - ▶ Clean aesthetics for rich look
 - ▶ Ideal for attaching to side, top, or bottom of operable windows
 - ▶ Several colors and woodgrains available



Picture



Casement with Transom



Double Hung with Transom

SLIDING PATIO

Open the door to exhilaration. Enjoy a room with a view that opens to the outdoors and gives you the peace of mind of a weather-tight Lexington sliding patio door. Optional between-the-glass blinds that tilt and raise are also available.

- Lexington sliding patio doors feature:
- ▶ Heavy-duty adjustable brass rollers for easy operation
 - ▶ Removable panels to allow for moving of large objects in and out of home.
 - ▶ Operating sash can be changed to reverse operating direction without removing frame.
 - ▶ Transom and sidelites available
 - ▶ Optional between-the-glass blinds
 - ▶ Optional foot and/or key lock for added security
 - ▶ Optional pet screen mesh
 - ▶ Optional 2-point lock, in regular retractable screen
 - ▶ Optional woodgrains, laminate, and paint available



2-Lite Patio Door



2-Lite Patio Door



3-Lite Center Operator



3-Lite End Operator



3-Lite End Operator



4-Lite Patio Door



CASEMENT & AWNING

The best casement windows help you save on energy, provide significant glass visibility, and are built to last. This is done with minimal effort using strong and reliable hardware and material. Lexington casement windows are built with superior strength hardware that functions smoothly. Lexington casement windows do not have the "flat" casement look, but are contoured to appear like hung and slider windows.

Lexington casement windows offer:

- ▶ Easy cleaning from the inside with 90 degree opening
- ▶ Three pieces of weatherstrip between the frame and sash
- ▶ Multi-point locking for increased security
- ▶ Alternate hardware color options available
- ▶ Several interior and exterior color options are available
- ▶ Optional between-the-glass blinds
- ▶ Optional interior woodgrains available
- ▶ Optional center bar makes casement look like a double hung (see picture below)
- ▶ Paint available for interior and exterior



Casement window with optional center bar gives the look of a double hung.



Extruded screen frame with small tabs to hold the screen securely in place.



Optional between-the-glass blinds. Colors: White, Tan (Clay), Sand (Sandstone), Espresso, Silver Moon, and Slate Gray



Casement under Awning



Casements are easy to clean from inside your home.



BAY & BOW

Add space, light, and a uniquely elegant look to your home with a custom bay or bow window. Lexington bay and bow windows dramatically change the appearance and feel of almost any room in a way that is certain to increase the value and splendor of your home. Bay and bows open up your room for more light and visibility, allowing you to enjoy the beauty of nature from the comfort of your home.

Lexington bay and bow windows feature:

- ▶ Custom sizes with various options for projection and seat board
- ▶ A combination of operable and non-operable windows
- ▶ Added value and curb appeal to your home
- ▶ Narrow frame and sash to maximize glass view
- ▶ One unit construction for strength and energy efficiency
- ▶ Seat board options include: oak, birch, and laminate to match windows
- ▶ Optional colors and woodgrains
- ▶ Insulated mulls and window panning to prevent water intrusion

Choose which windows you would like to operate. Most customers choose to have the end windows (flankers) operate and the rest fixed.



Five Wide Bow Window



Bay Window with Double Hung



Bay Window



Five Wide Bow

SUPERIOR DESIGN

From the swings in temperature to unwanted outdoor sounds to operational and cleaning hassles, your windows constantly impact your comfort, household expenses, and overall attractiveness of your home. At Lindsay Windows, we understand this and that is why we have designed and engineered the Lexington for superior performance combined with style, beauty, security, and design flexibility. It is the benchmark for the high-end, premium window market.

GREAT PERFORMANCE FEATURES

- ▶ uPVC vinyl compound for easy maintenance and consistent color. No more rotting, painting, staining, or warping
- ▶ Injected foam improves energy performance and sound reduction
- ▶ Made in USA Innergy™ reinforcement reduces the energy loss between the exterior and interior while improving strength
- ▶ Magnetic bulb seal between the bottom sash and sill provide a "refrigerator effect" seal
- ▶ SecureEZ Hardware combines the lock with an integrated tilt latch for clean and premium appearance
- ▶ Three pieces of weatherstrip reduces outside air and sound
- ▶ Triple strength glass for superior longevity and safety
- ▶ Overlapping, extruded interlocks improve safety, energy efficiency, and add superior air resistance to prevent water intrusion
- ▶ Welded frame and sash corners for outstanding strength and durability
- ▶ Sloped sill for great water runoff and easy cleaning
- ▶ Patented sill upstand for strength and safety
- ▶ Sash vent allows limited sash opening
- ▶ Extruded nail-fin available



ATTRACTIVE DESIGN

- ▶ Curved and beveled exterior provide attractive curb appeal
- ▶ Contoured lift rails for attractive view from the inside
- ▶ Beveled locks for security
- ▶ Balance tube covers hide distracting chambers
- ▶ Matching color hardware with options to customize it for your home



EASY TO USE

- ▶ Both top and bottom sash operate and tilt in for easy cleaning and ventilation
- ▶ Smooth operation with OpenEZ Balance System for opening and closing your window



Double Hung Window



Standard Lock with Tilt Latches



Optional Lock with Built-in Tilt



Non-metal Reinforcement at Interlock