

The Genuine. The Original.



FireKing™

Insulated Fire Door

Fire protection, insulation and sound control in one door

FireKing™

Insulated fire door

Fire protection, insulation and sound control in one door

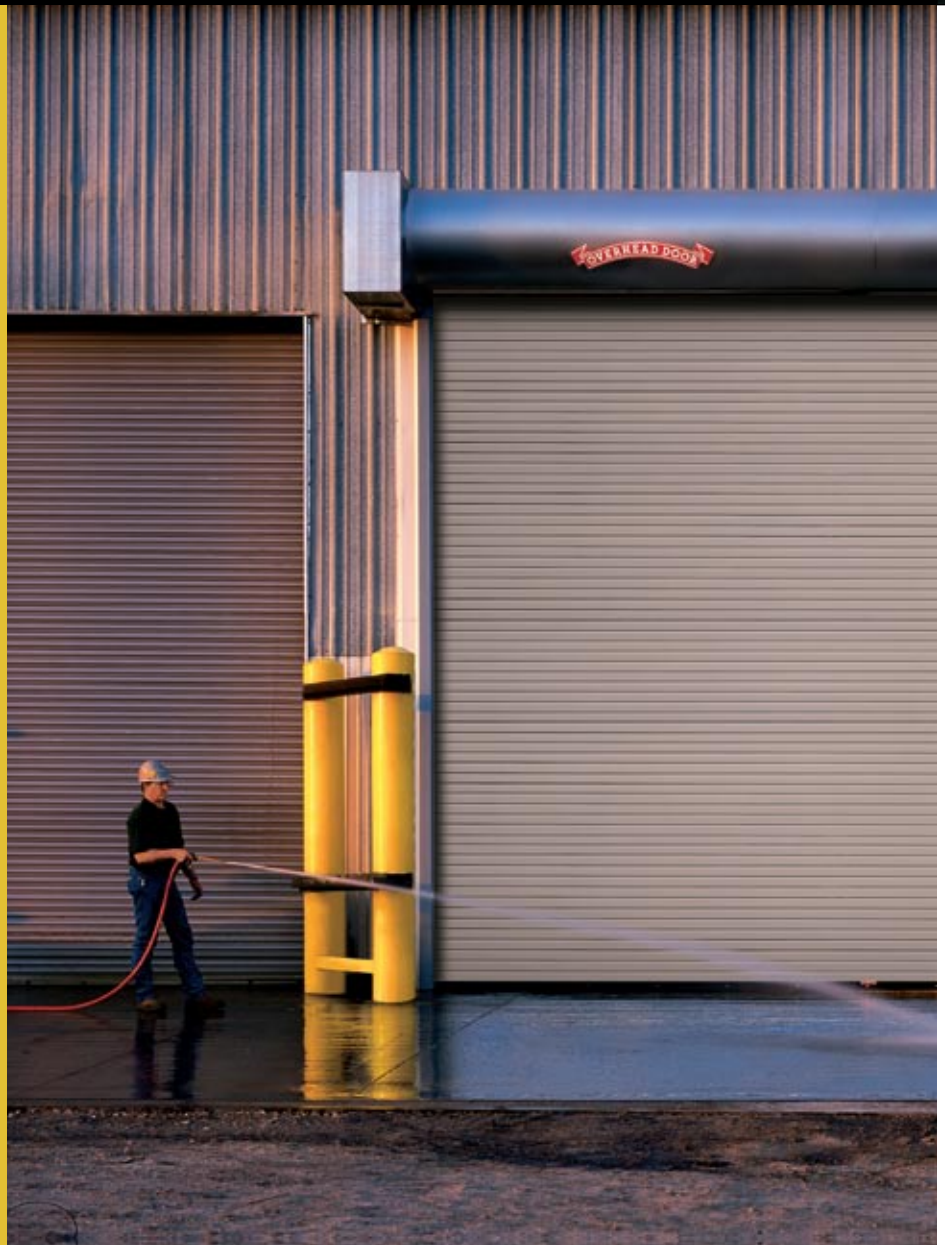
The Genuine. The Original.



The protection of a fire door combined with the energy-efficiency and sound transmission control of an insulated door.

Fire protection. Energy-efficiency. Sound control.

The FireKing™ Insulated Fire Door by Overhead Door offers triple benefits of fire protection, insulation and sound control in one door. The FireKing™ door satisfies all of the key application needs, eliminating the need for two separate fire and insulated doors.





FireKing's Advantages

FireKing™ is an extension of our fire door product line and provides customers with the protection of a fire door combined with the energy efficiency and sound transmission control of an insulated door.

- FireKing™ is approved by UL, ULC and FM and meets the New York City (MEA) and state of California (CSFM) requirements.
- NFPA-80 compliant.
- FireKing™ has a four-hour rating on masonry, concrete and steel walls, and a three-hour rating on non-masonry walls to satisfy a variety of applications.
- Insulated to an R-value of 4.5 for energy-efficiency.
- Optional smoke seals are available to reduce the amount of smoke transferred from the fire side to the protected side. An optional "S" smoke label is available.

- FireKing™ serves as a thermal barrier — ideal for applications which require separation due to climate control requirements.
- FireKing™ features a Sound Transmission Class of 23 — ideal for applications that require sound control.
- FireKing™ can also be utilized for everyday use, similar to a rolling steel door, eliminating the need for an additional door.

Performance and Durability

- Two-year limited warranty coverage on material and workmanship.



FireKing™

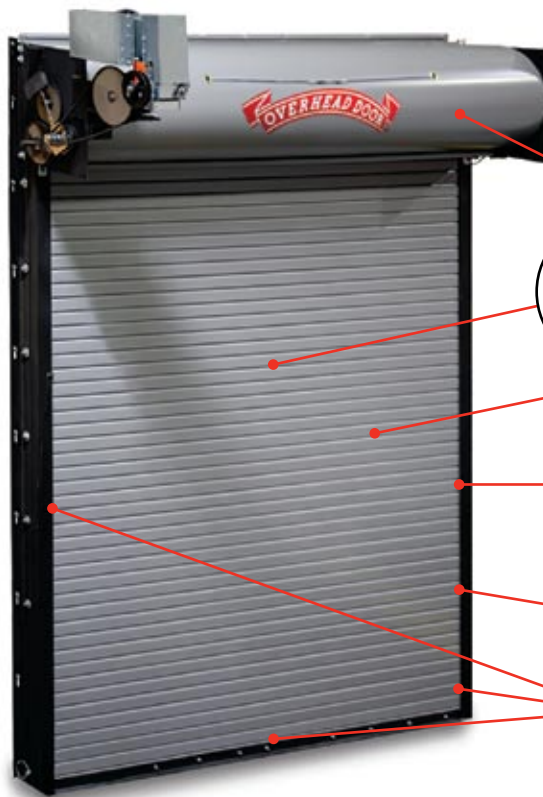
Insulated fire door

Fire protection, insulation and sound control in one door

The Genuine. The Original.

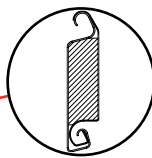


The protection of a fire door combined with the energy-efficiency and sound transmission control of an insulated door



Oil tempered torsion springs

Designed for 20,000 life cycles.



Energy-efficiency

Insulated with an R-value of 4.5.

Sound transmission control

Curtain has an STC rating of 23.

Optional smoke seal

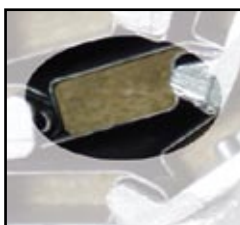
Reduces the amount of smoke transferred from the fire side to the protected side.

Heavy-duty brush seal

Reduces air and dust infiltration.

Structural angle guides and bottom bar

Provide smooth and reliable operation.



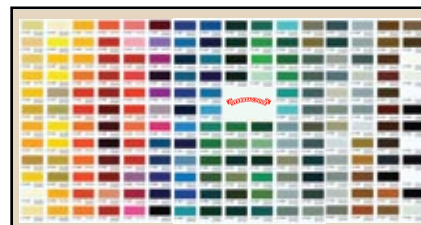
Overhead Door's FireKing™



Competition

Maximum insulation

FireKing's mineral wool insulation material is compressed within the steel slat, completely and uniformly filling the slat for maximum insulation.



Powder-coat options



Powder-coat paint finish in 197 colors or color matched to architect's specifications to best complement the look of the facility.

PRODUCT APPLICATION CHART

DOOR LABEL	MOUNTING	WALL CONSTRUCTION	MAXIMUM WIDTH	MAXIMUM HEIGHT	MAXIMUM AREA	CERTIFYING AGENCY
Four hours	Face of Wall and Between the Jambs*	Masonry/Steel	13'- 6"	13'- 6"	152 Sq. Ft.	UL
Four hours	Face of Wall and Between the Jambs*	Masonry/Steel	12'	10'	120 Sq. Ft.	FM
Oversize four hours	Face of Wall and Between the Jambs*	Masonry/Steel	24'	24'	576 Sq. Ft.	UL
Oversize four hours	Face of Wall and Between the Jambs*	Masonry/Steel	18'	18'	324 Sq. Ft.	FM
Three hours	Face of Wall and Between the Jambs*	Non-masonry	12'	12'	144 Sq. Ft.	UL
One and a half hours	Face of Wall and Between the Jambs*	Non-masonry	12'	10'	117 Sq. Ft.	FM
Oversize three hours	Face of Wall and Between the Jambs*	Non-masonry	14'	12'	168 Sq. Ft.	UL
Oversize one and a half hours	Face of Wall	Non-masonry	14'	11'	140 Sq. Ft.	FM
Oversize three hours	Face of Wall and Between the Jambs*	Steel Tube inside Non-masonry	16'	14'	224 Sq. Ft.	UL
Oversize one and a half hours	Face of Wall	Steel Tube inside Non-masonry	14'	11'	140 Sq. Ft.	FM
Three hours	Face of Wall	Steel Tube on Masonry or Non-masonry	12'	12'	144 Sq. Ft.	UL
Three hours	Face of Wall	Steel Tube on Masonry or Non-masonry	12'	10'	120 Sq. Ft.	FM
Oversize three hours	Face of Wall	Steel Tube on Masonry or Non-masonry	24'	24'	576 Sq. Ft.	UL
Oversize three hours	Face of Wall	Steel Tube on Masonry or Non-masonry	18'	18'	324 Sq. Ft.	FM

* Between Jambs Doors are based on width of wall and from floor to top of coil (under lintel). FM reviews each size above the over size service on a case-by-case basis.

AVAILABLE OPTIONS

 Fire Sentinel®	Time-delay release device allows to customize the fire-rated doors to the required level to satisfy a wide variety of applications
FireLite® vision lite	Four (face mounted only), three, and one and a half hour labels to provide visual access through the door
Fire Minuteman® reset hoist	Fire Minuteman® reset hoist for easy door resetting. Allows for one person to reset the door and eliminates the need for special equipment or training. Reduces downtime and associated expenses.
Smoke seal	UL-listed brush-type smoke seals to satisfy smoke retardation requirements of certain applications
 Smoke detectors	Photoelectric or ionization-type smoke detectors, for additional safety
Chain hoist, crank or electric operation	To satisfy a variety of applications

FireKing™

Insulated fire door

Fire protection, insulation and sound control in one door

The Genuine. The Original.

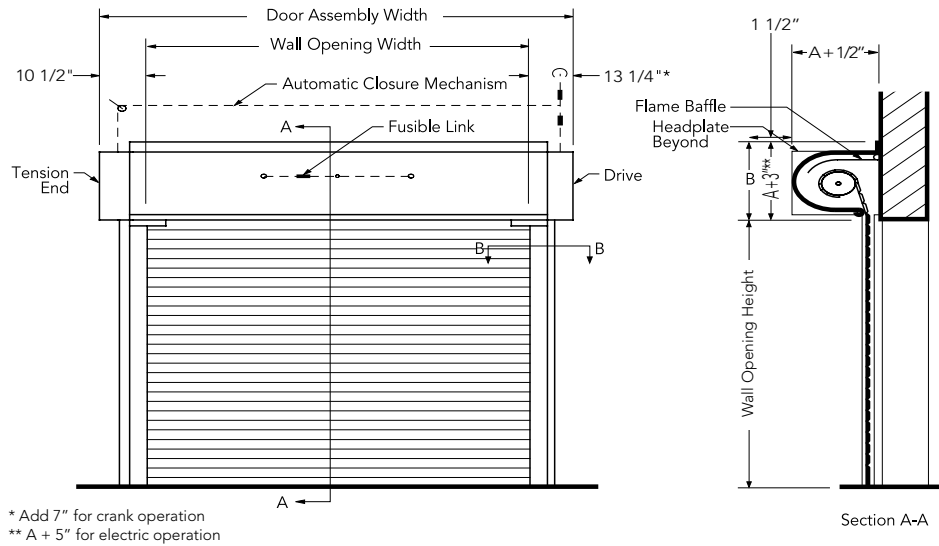


The protection of a fire door combined with the energy-efficiency and sound transmission control of an insulated door

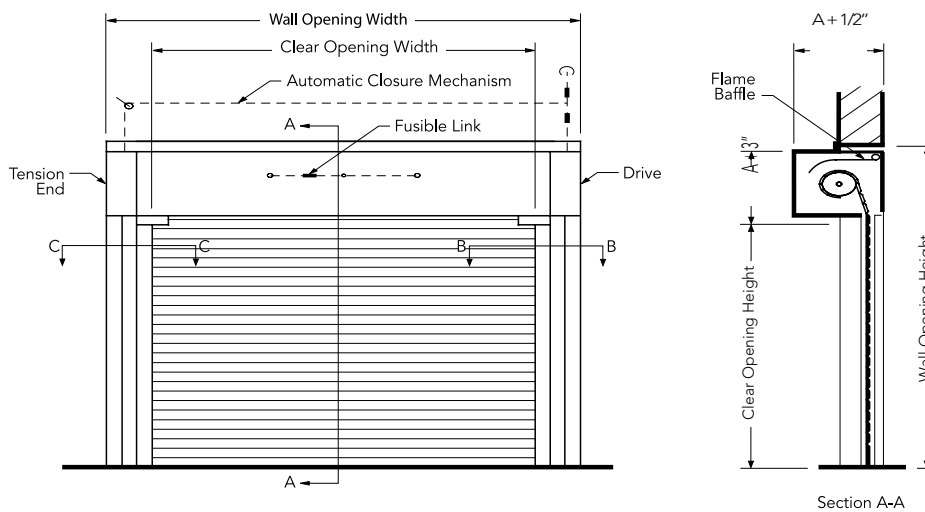
DOOR CLEARANCE ELEVATION

Operation: Crank, chain hoist or electric.

Face-of-Wall Mounted



Between Jambs Mounted

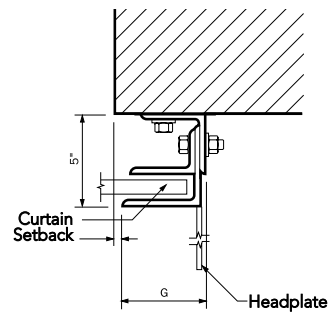




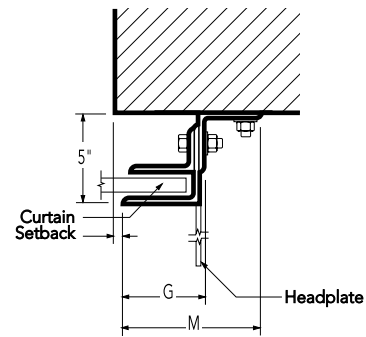
FACE-OF-WALL ANGLE GUIDES

Section B-B

E Type

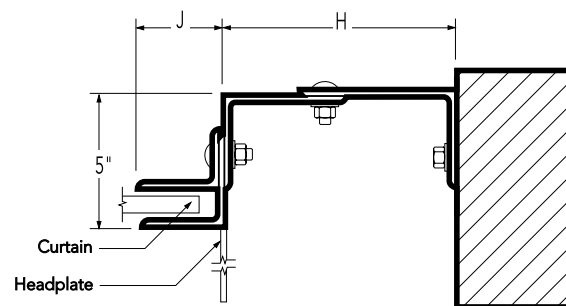


Z Type

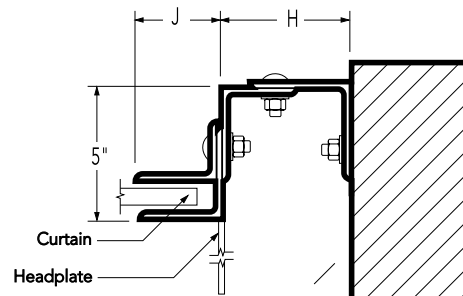


BETWEEN JAMBS ANGLE GUIDES

Drive Side - Electric, Chain or Crank Section B-B



Tension Side Section C-C



Whenever expansion mounting bolts are used maintain a minimum of 6 bolt diameters from edge of wall



FireKing™

Insulated fire door

Fire protection, insulation and sound control in one door

The Genuine. The Original.



The protection of a fire door combined with the energy-efficiency and sound transmission control of an insulated door

F265 WITH BACK COVER

Maximum wall opening height*	Thru 20' - 0" wide A	Thru 24' - 0" wide A	Hood angle height	Expansion gap
Thru 8'0" (2438 mm)	18' (546 mm)	18' (546 mm)	3 1/4" (83 mm)	1 1/4" (32 mm)
Thru 10'0" (3048 mm)	20' (546 mm)	20' (546 mm)	3 1/4" (83 mm)	1 1/2" (36 mm)
Thru 11'0" (3353 mm)	20' (546 mm)	20' (597 mm)	3 1/4" (83 mm)	1 3/4" (45 mm)
Thru 12'0" (3658 mm)	20' (546 mm)	20' (597 mm)	3 1/4" (83 mm)	1 3/4" (45 mm)
Thru 13'0" (3962 mm)	20' (546 mm)	20' (597 mm)	4" (102 mm)	2" (51 mm)
Thru 14'0" (4267 mm)	22' (546 mm)	24' (597 mm)	4" (102 mm)	2" (51 mm)
Thru 16'0" (4877 mm)	22' (597 mm)	24' (648 mm)	4" (102 mm)	2 1/4" (57 mm)
Thru 18'0" (5486 mm)	24' (597 mm)	•	4" (102 mm)	2 1/2" (64 mm)
Thru 19'0" (5791 mm)	24' (648 mm)	•	4 3/4" (121 mm)	2 3/4" (70 mm)
Thru 21'0" (6401 mm)	24' (699 mm)	•	4 3/4" (121 mm)	3" (76 mm)
Thru 24'0" (7315 mm)	•	•	4 3/4" (121 mm)	3 1/4" (83 mm)

F265 WITH BACK COVER DIMENSIONS G AND M** GUIDE CLEARANCE DIMENSIONS

Maximum wall opening width	G	M	J	H (Tension end)	Dimension H** drive end Type of operation H
Thru 8'0" (2438 mm)	4 1/4" (108 mm)	7 1/2" (191 mm)	4" (102 mm)	4 1/2" (114 mm)	Electric, chain, crank 7 1/2" (191 mm)
Thru 12'0" (3658 mm)	4 1/4" (108 mm)	7 1/2" (191 mm)	4" (102 mm)	4 1/2" (114 mm)	
Thru 14'0" (4267 mm)	4 1/4" (108 mm)	7 1/2" (191 mm)	4" (102 mm)	4 1/2" (114 mm)	
Thru 16'0" (4877 mm)	4 1/4" (108 mm)	7 1/2" (191 mm)	4" (102 mm)	4 1/2" (114 mm)	
Thru 20'0" (6401 mm)	4 1/4" (108 mm)	7 1/2" (191 mm)	4" (102 mm)	4 1/2" (114 mm)	
Thru 24'0" (7315 mm)	4 1/4" (108 mm)	7 1/2" (191 mm)	4" (102 mm)	4 1/2" (114 mm)	

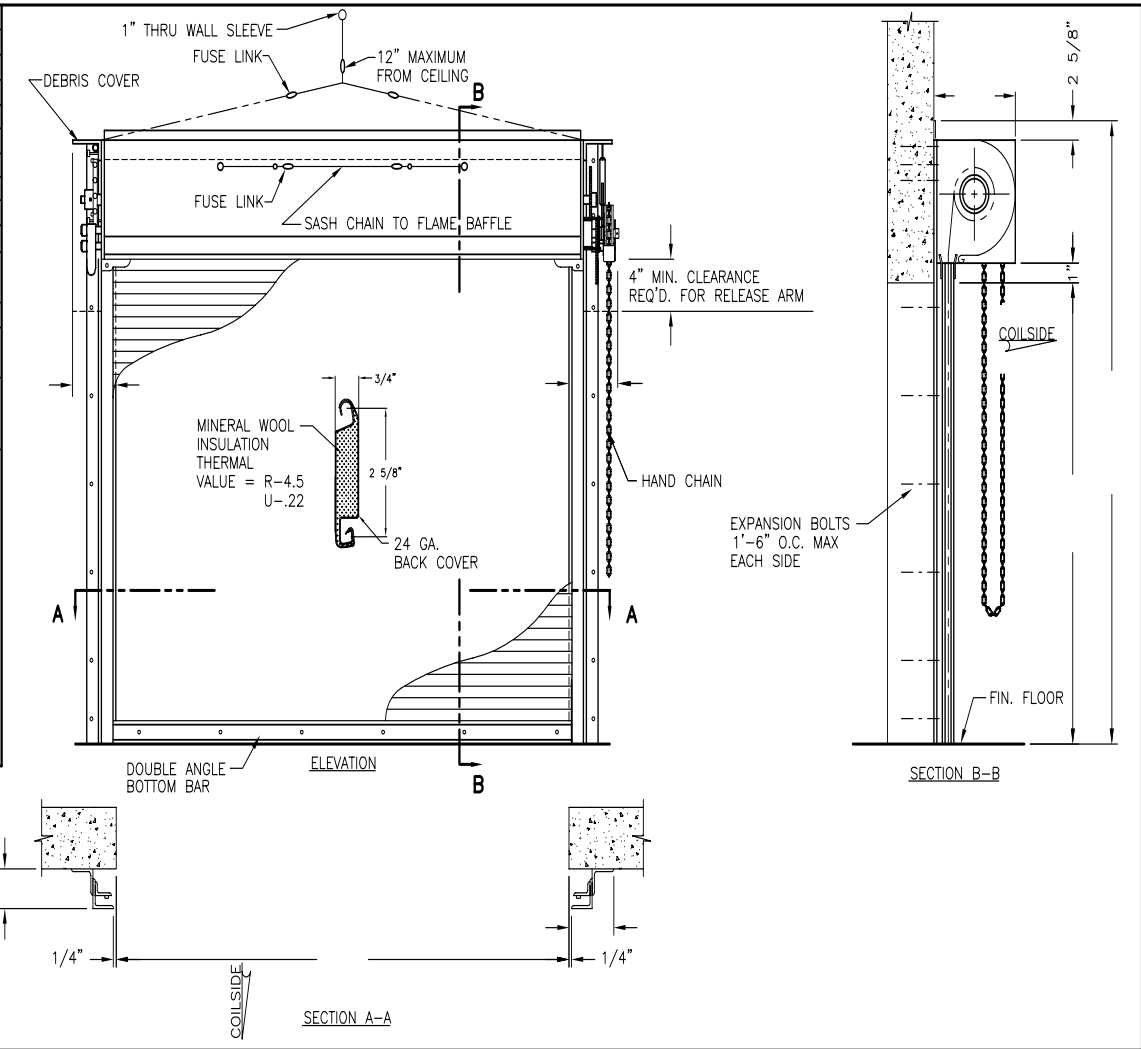
*Height limit for non-masonry jambs is 12' 0" (3658 mm). **For maximum wall opening height of 12' (3658 mm).

635 FACE OF WALL OR BETWEEN THE JAMB MOUNT

Slat	Opening width	Standard	Option
F265 with back cover	Thru 24' wide	24 gauge front	22 gauge front
		24 gauge back	22 gauge back

SHOP DRAWING

SPECIFICATIONS	
DOOR MARK	
QUANTITY	
WIDTH	
HEIGHT	
MATERIAL	
FRONT SLAT	24 GA. GALVANIZED STEEL
BACKCOVER	24 GA. GALVANIZED STEEL
HOOD	24 GA. GALVANIZED STEEL
GUIDES	STEEL L's
BOTTOM BAR	STEEL J's
FINISH	
FERROUS SURFACES	SHOP PRIMED (BLACK)
HOOD CURTAIN	BAKED ON GRAY POLYESTER TOP COAT
NOTES	
DOOR WILL BE AUTOMATIC SELF CLOSING UPON MELTING OF A FUSIBLE LINK.	
DOOR WILL BE UNDERWRITERS LABORATORIES CLASS "A" LABELED, FOUR HOUR RATED.	
FACTORY MUTUAL FOUR HOUR RATED.	
DOOR WILL HAVE ALTERNATE MALLEABLE IRON WINDLOCKS.	
DOOR WILL HAVE A GOVERNOR TO CONTROL CLOSING SPEED.	
CURTAIN STC RATING = 23	
MINERAL WOOL FLAME SPREAD = 5 AND SMOKE DEVELOPMENT = 5 PER ASTM E-84.	



FireKing™

Insulated fire door

Fire protection, insulation and sound control in one door

The Genuine. The Original.



The protection of a fire door combined with the energy-efficiency and sound transmission control of an insulated door

SPECIFICATIONS

Note to Specifier: This specification is a suggested guide. Available options are shown in parentheses.

PART 1 - GENERAL 1.01 RELATED DOCUMENTS	
1.01 Related Documents	A. All of the Contract Documents, including General and Supplementary Conditions, and Division 1 General Requirements, apply to the work of this Section.
1.02 Summary	A. The work of this Section includes rolling fire doors. B. Related Sections: Other specification sections which directly relate to the work of this Section include, but are not limited to, the following: 1. Section 08710 - Finish Hardware; key cylinders for locks. 2. Section 16100 - Electrical; wiring.
1.03 Submittals	A. Product Data: Submit manufacturer's product data and installation instructions for each type of rolling fire door. Include both published data and any specific data prepared for this project. B. Shop Drawings: Submit shop drawings for approval prior to fabrication. Include detailed plans, elevations, details of framing members, required clearances, anchors, and accessories. Include relationship with adjacent materials.
1.04 Quality Assurance	A. Manufacturer: Rolling fire doors shall be manufactured by a firm with a minimum of five years experience in the fabrication and installation of rolling fire doors. Manufacturers proposed for use, which are not named in these specifications, shall submit evidence of ability to meet performance and fabrication requirements specified, and include a list of five projects of similar design and complexity completed within the past five years. B. Installer: Installation of rolling fire doors shall be performed by an authorized representative of the manufacturer. C. Single-Source Responsibility: Provide doors, guides, motors, and related primary components from one manufacturer for each type of door. Provide secondary components from source acceptable to manufacturer of primary components. D. Pre-Installation Conference: Schedule and convene a pre-installation conference just prior to commencement of field operations, to establish procedures to maintain optimum working conditions and to coordinate this work with related and adjacent work.
1.05 Delivery, Storage and Handling	A. Deliver materials and products in labeled protective packages. Store and handle in strict compliance with manufacturer's instructions and recommendations. Protect from damage from weather, excessive temperatures and construction operations.
PART 2 - PRODUCTS	
2.01 Acceptable Manufacturer	A. Provide rolling fire doors by Overhead Door Corporation; Telephone 800-929-2553 or 717-248-0131; Fax 800-929-1274.
2.02 Rolling Fire Doors	A. Trade Reference: Series 635 Fire Doors by Overhead Door Corporation. B. Label: Provide fire doors certified with the following listing. 1. Rolling fire doors up to 152 sq. ft. and 13'6" in width or height shall bear the UL 4-Hour Class A Label. (ULC 4-Hour Label.) (UL 3-Hour Class B Label for non-masonry fire walls.) 2. Rolling fire doors over 152 sq. ft. shall receive the UL Oversize Fire Door Label. 3. Rolling fire doors up to 120 sq. ft. and 12' in width or 10' in height shall bear the FM 4-Hour Class A Label. (FM 1 1/2 Hour Class B Label for non-masonry fire walls.) 4. Rolling fire doors over 120 sq. ft. and not exceeding 18' in height or width shall receive the Factory Mutual Label for Oversize Fire Doors. C. If UL labeled smoke protection is required, then provide doors with Underwriters' Laboratories, Inc. label for "Leakage Rated Assembly" or "S" label. 1. Comply with NFPA 105 air leakage requirements. 2. Pass UL test procedure 1784. D. Curtain: Interlocking roll-formed slats as specified following. Alternate wind-lock type end-locks shall be attached to each end of alternate slats to prevent lateral movement. 1. Flat profile type F-265 with a back cover through 24' width and 24' height fabricated of 24 gauge galvanized steel. (Optional 22 ga. Galvanized Steel). Mineral wool inserts will fill the slat assembly internal space. 2. Calculated R-Value: 4.5 (Hr.)(Ft.^2)(°F)/Btu 3. STC (Sound Transmission Class) Testing: STC (Sound Transmission Class) Testing Door Assembly 17 Door Assembly with single or double brush seals 18 Curtain Only 23



SPECIFICATIONS (continued)

PART 2 - PRODUCTS (continued)	
	<p>E. Finish</p> <p>1. Galvanized Steel: Slats and hood shall be galvanized steel in accordance with ASTM A 525 and receive rust inhibitive, roll coating process, including bonderizing, 0.2 mils thick baked-on prime paint, and 0.6 mils thick baked-on polyester (powder coated) top coat. Non-galvanized exposed ferrous surfaces shall receive one coat of rust-inhibitive primer.</p> <p>F. Color: Gray polyester top coat. (Tan polyester top coat.) (Powder coating finish in color as selected by Architect from manufacturer's standard colors.)</p> <p>G. Bottom Bar: Two (galvanized) structural steel angles 1-1/2" by 1-1/2" by 1/8" minimum. (Single angle for conveyor applications.) (Optional sloping bottom bar within UL limits.) (Optional insulated bottom bar).</p> <p>H. Guides: Guides will be three structural steel angles with a minimum thickness of 1/4" (6 mm) mounted to the face of the jamb. They also include a locking bar or "wind bar".</p> <p>1. Fastening Guides to Masonry Fire Walls: UL listed expansion anchors, or by through-bolts on soft brick or hollow block walls, or by bolts on steel jambs, or welded in accordance with manufacturer's listing.</p> <p>2. Fastening Guides to Non-Masonry Fire Walls: Comply with the manufacturer's listing</p> <p>I. Brackets: Steel plate to support counterbalance, curtain and hood.</p> <p>J. Counterbalance: Helical torsion spring type. Counterbalance shall be housed in a steel tube or pipe barrel, supporting the curtain with deflection limited to 0.03" per foot of span. Counterbalance shall be adjustable by means of an adjusting tension wheel.</p> <p>K. Hood: 24 gauge galvanized primed steel minimum for wall openings thru 19' wide. 22 gauge galvanized primed steel for wall openings over 19' wide. Hood shall be equipped with thermally controlled, internal, galvanized steel flame baffle as required. Provide one intermediate support bracket for wall openings over 13'6" wide and two support brackets for wall openings over 19'0" wide.</p> <p>L. Manual Operation: Chain Hoist (Crank.)</p> <p>M. Electric Motor Operation: Provide UL listed electric operator, size as recommended by manufacturer to move door in either direction at not less than 2/3 foot nor more than 1 foot per second.</p> <p>1. Sensing Edge Protection: (Pneumatic sensing edge.) (Electric sensing edge.)</p> <p>2. Operator Controls: Push-button (Key) (Push-button and key) operated control stations with open, close, and stop buttons for surface (flush) mounting, for interior (exterior) (both interior and exterior) location.</p> <p>3. Special Operation: (Vehicle detector operation), (radio control operation), (card reader control), (photocell operation), (door timer operation), (commercial light package), (explosion and dust ignition proof control wiring).</p> <p>N. Automatic Closure:</p> <p>(See Fire Sentinel specification for time delay release device.) (See Fire Minuteman® specification for test and reset hoist.)</p> <p>O. Locking: (Interior bottom bar slide bolt.) (Interior slide lock for electric operation with interlock switch.) (Cylinder locking bottom bar with mortise cylinders.)</p> <p>P. Wall Mounting Condition: Face-of-wall mounting (Between jambs mounting).</p>
PART 3 - EXECUTION	
3.01 Preperation	<p>A. Take field dimensions and examine conditions of substrates, supports, and other conditions under which this work is to be performed. Do not proceed with work until unsatisfactory conditions are corrected.</p>
3.02 Installation	<p>A. Strictly comply with manufacturer's installation instructions and recommendations. Coordinate installation with adjacent work to ensure proper clearances and allow for maintenance.</p> <p>B. Install rolling fire doors in compliance with requirements of NFPA 80. Test fire-release system and reset components after testing.</p> <p>C. Instruct Owner's personnel in proper operating procedures and maintenance schedule.</p>
3.02 Adjusting and Cleaning	<p>A. Test rolling fire doors for proper operation and adjust as necessary to provide proper operation without binding or distortion.</p> <p>B. Touch-up damaged coatings and finishes and repair minor damage. Clean exposed surfaces using non-abrasive materials and methods recommended by manufacturer of material or product being cleaned.</p>

©2008 Overhead Door Corporation. All Rights Reserved. A copyright license to reproduce this specification is hereby granted to non-manufacturing architects, engineers and specification writers.



The Service and Support You Need – When You Need Them

When you select an Overhead Door product, you get more than advanced product design and manufacturing superiority – you get unmatched support and fast response through our nationwide network of nearly 500 certified Ribbon Distributors. For over four generations, Ribbon Distributors have provided the industry's single-source solution for commercial and industrial door and operator systems specifically designed for integrated applications. From design and application consulting to installation and ongoing maintenance, Overhead Door Ribbon Distributors give you the service and support you need — when you need them.

Industry-leading Warranty



FireKing™ doors are guaranteed with a 2-year limited warranty. See complete warranty terms for full limitations and details.

The Genuine. The Original.



2501 S. State Hwy.121, Suite 200
Lewisville, TX 75067

1-800-929-DOOR
www.OverheadDoor.com



Complies with UL 325
as of manufactured date.
FCC Certified.

©2008 Overhead Door Corporation. Overhead Door and the Ribbon logo are registered trademarks of, Overhead Door Corporation. All other trademarks are the property of their rightful owners. Consistent with our policy of continuing product improvements, we reserve the right to change product specification without notice or obligations. C900-761

SOLD AND DISTRIBUTED BY: