

# FireDoor Systems



Product Line

ROLLING SERVICE FIRE

COUNTER FIRE

INTEGRAL FRAME & SILL FIRE

SERIES

630 631 634

640 641

660 661 662



INDUSTRY LEADING  
COMMERCIAL & INDUSTRIAL SOLUTIONS



# Fire-Rated Doors That Set the Standard for Safety and Style

## THE TURNKEY SOURCE FOR COMMERCIAL AND INDUSTRIAL SOLUTIONS AND SERVICE

Selection of Overhead Door products automatically includes the unequalled expertise and experience of Overhead Door Ribbon Distributors. Nationwide coverage by our 400+ Ribbon Distributors is unique in our industry – providing a single source for design and application consulting, installation, service and ongoing maintenance. Turnkey services to maximize the lasting value of your product choice. Your Overhead Door Distributor is also your only source for a full line of commercial and industrial door and operator systems specifically



designed for integrated applications. For over four generations, our 400+ Ribbon Distributors have been committed to providing commercial and industrial door solutions. Combined with Overhead Door product design and manufacturing superiority, our distributors are a proud part of the Overhead Door family, sharing our name, our Ribbon logo and our commitment to industry leading innovation and excellence.

## GENERAL FEATURES AND BENEFITS

### Rated, Reliable Fire Protection

- Wide range of sizes and styles meet or exceed industry fire safety testing standards including UL, FM, ULC, as well as New York City (MEA) and State of California requirements (CSFM)
- Doors are compliant with all NFPA-80 standards

### Built-in Safety With Unparalleled Styling

- Constructed of galvanized or stainless steel in a variety of gauges, slat designs and finishes for unsurpassed strength, durability and style
- Door closes automatically under governor control after separation of fuse link. UL recommends a 165°F (74°C) fuse link for ambient conditions for 100°F (38°C) or less, or a 212°F (100°C) fuse link for ambient conditions over 100°F (38°C)
- Door guide assembly rests on the sill to provide an attractive finished appearance eliminating setup gaps. Guides expand upward during a fire

### A Full Line of Service Fire and Counter Fire Doors to Fit Any Project

- Rolling service fire doors fit openings up to 41' wide (12,497 mm) or 25' (7620 mm) high (max. 683 sq. ft. or 63453 sq.mm) with up to a 4-hour UL rating
- Counter fire doors fit openings to 14' (4267 m) wide and 10' (3048 mm) high with either a 3-hour or 1 1/2-hour UL rating, and are optionally available with a 1 1/2-hour rated plastic laminated countertop
- Integral frame and sill counter fire doors with a 1 1/2-hour UL rating afford a handsome finished look
- Motor operated counter fire door does not required tension reset after automatic fire release

### More Options for Customized Solutions

- UL-listed FireLite® vision lites in 4-, 3-, and 1 1/2-hour labels allow visual access without compromising safety

- UL-listed brush-type smoke gaskets satisfy smoke retardation requirements
- Additional safety options include the Fire Sentinel™ time-delay release device photoelectric or ionization-type smoke detectors, with or without heat detector, as well as solid-state horn, strobe or voice enunciators
- Firestop® fire-resistant core countertops covered with popular brands of decorative laminates allow coordination of project design elements for use with counter fire doors

### Fire Sentinel: State-of-the-Art, Fail-Safe Fire Protection

- Fire Sentinel time-delay release device provides added protection in the event of a power loss
- Multiple models provide the level of protection best suited to the application
- 10-second time-delay on alarm and independent 10-second time delay on power loss (up to 30-seconds optional; customizable to any specified time delay) offer fail-safe protection and eliminate false operation during momentary power outages
- “Intelligent operation” feature on selected models recognizes when door is closed and inhibits release to eliminate time-consuming resets and prevent damage to the door release mechanism
- Single closure design eliminates separate wiring from time-delay to optional equipment
- Innovative engineering affords easy, convenient reset and vibration-resistant design prevents false closure
- Advanced options on selected models include 72-hour battery backup, strobe/sounder alarms, programmable multilingual enunciators, and no-delay closure feature
- Additionally available uninterruptible power supply for use with motor-operated doors allows door closure by a central alarm or smoke detector under motor power.

Firestop is a registered trademark of Georgia-Pacific Corporation  
FireLite is a registered trademark of Nippon Electric Glass Company  
\*Not available in integral frame and sill



Overhead Door Corporation offers a wide array of rolling steel doors to meet the most demanding fire safety standards, unusual opening sizes and discerning aesthetic requirements. Designed to close automatically in the event of a fire or alarmed event, our fire-rated doors are available for service door and counter applications in commercial, industrial, institutional and retail uses.

All doors comply with NFPA-80, and are listed for both masonry and non-masonry applications — including installation to wood or steel jambs within drywall. The **Fire Sentinel™** time-delay release mechanism provides an added measure of safety to control the doors' closure.

*Installation and Service: Overhead Door Company of Dallas-Commercial*




# Fire Door Comparison Chart

## Fire Sentinel



**Fire Sentinel™ time-delay release device**  
The Fire Sentinel is a UL-listed, fail-safe, time-delay door release device that controls a fire door's closure in an emergency condition. A variety of Fire Sentinel models and a number of optional features permit customization of any fire-rated door to the level of protection required for your specific application. (See pages 18-19 for more information)

| Fire Doors  |     | GENERAL SPECIFICATIONS  |            |          |         |                   |                   |                         |             |                           |                            |                  |                |               |              |  |  |
|---|-----|-------------------------|------------|----------|---------|-------------------|-------------------|-------------------------|-------------|---------------------------|----------------------------|------------------|----------------|---------------|--------------|--|--|
| <br>SERIES |     | Label<br>UL/FM 1-1/2-hr | UL/FM 3-hr | ULC 3-hr | UL 4-hr | UL Oversized Door | FM Oversized Door | Applications<br>Masonry | Non-masonry | Standard<br>Maximum width | Standard<br>Maximum height | Curtain material | Frame material | Sill material | Finish Color |  |  |
| Rolling Service Fire Doors<br>(Pg. 4 – 11)  | 630 | *                       | *          | *        |         | **                | ***               | ●                       | ●           | 41'2"<br>(12548 mm)       | 25'4"<br>(7722 mm)         | galv./ss         |                |               | gray/tan     |  |  |
|   | 631 | *                       | *          | *        |         | ***               |                   | ●                       | ●           | 14'<br>(4267 mm)          | 12'<br>(3658 mm)           | galv./ss         |                |               | gray/tan     |  |  |
|   | 634 |                         |            |          | *       | **                |                   | ●                       | ●           | 41'2"<br>(12.5 m)         | 25'4"<br>(7722 mm)         | galv./ss         |                |               | gray/tan     |  |  |
| Counter Doors<br>(Pg. 12 – 15)  | 640 | *                       | *          |          |         |                   |                   | ●                       | ●           | 14'<br>(4267 mm)          | 10'<br>(3048 mm)           | galv.            |                |               | gray/tan     |  |  |
|   | 641 | *                       | *          |          |         |                   |                   | ●                       | ●           | 14'<br>(4267 mm)          | 10'<br>(3048 mm)           | ss               |                |               | ss           |  |  |
| Integral Frame Counter Doors<br>(Pg. 16 – 17)   | 660 | ●<br>(No FM)            |            |          |         |                   |                   | ●                       | ●           | 9'<br>(2743 mm)           | 4'<br>(1.219 mm)           | ss               | ss             | ss            | ss           |  |  |
|   | 661 | ●<br>(No FM)            |            |          |         |                   |                   | ●                       | ●           | 9'<br>(2743 mm)           | 4'<br>(1219 mm)            | galv.            | galv.          | ss            | ss           |  |  |
|   | 662 | ●<br>(No FM)            |            |          |         |                   |                   | ●                       | ●           | 9'<br>(2743 mm)           | 4'<br>(1219 mm)            | galv.            | ss             | ss            | ss           |  |  |

\* (Up to 12' or 3658 mm width/height, max. 144 sq. ft. or 13378 sq.mm)

\*\* (Over 144 sq. ft. or 13378 sq.mm)

\*\*\* (Over 144 sq. ft or 13378 sq.mm.,but less than 18' or 5486 mm height) (FM reviews designs for openings over 18' or 5486 mm wide)

Note: ss = Stainless steel, galv = painted, galvanized steel

Information is subject to change. Please call your local Overhead Door distributor for special applications or if your application is not listed.



### Fire Door Options



#### FireLite®

FireLite® vision lites are available in 4-Hour, 3-Hour, and 1½ Hour labeled rolling fire doors to provide visual access through the door's curtain slats.

*(Not available in integral frame and sill model)*



#### Smoke detectors

Smoke detectors available, photo-electric or ionization types, with or without heat detector. Requires the use of a Fire Sentinel release device.



#### Smoke Seals

Brush-type smoke seals available for applications which have requirements for smoke retardation.

### AVAILABLE OPTIONS

| Fire Sentinel™ time-delay release device | Smoke detectors | FireLite® vision lites | UL-listed brush-type smoke gaskets    | Operation Push-up | Chain hoist | Crank | Electric | Locking Cylinder locking bottom bar w/ mortise cylinder | Finish Optional powder coat 21 standard colors | Optional powder coat 172 premium colors |
|--|-----------------|------------------------|---------------------------------------|-------------------|-------------|-------|----------|---|--|---|
| ●  | ●               | ●                      | ●<br>(Up to 80 sq. ft. or 7432 sq.mm) | ●                 | ●           | ●     | ●        | ●   | ●  | ●                                       |
| ●  | ●               | ●                      | ●<br>(Up to 80 sq. ft. or 7432 sq.mm) | ●                 | ●           | ●     | ●        | ●   | ●  | ●                                       |
| ●  | ●               | ●                      | ●<br>(Up to 80 sq. ft. or 7432 sq.mm) | ●                 | ●           | ●     | ●        | ●   | ●  | ●                                       |
| ●  | ●               | ●                      | ●                                     | ●                 |             | ●     | ●        | ●   | ●  | ●                                       |
| ●  | ●               | ●                      | ●                                     | ●                 |             | ●     | ●        | ●   | ●  | ●                                       |
| ●  | ●               |                        | ●                                     | ●                 |             |       |          | ●   |  |   |
| ●  | ●               |                        | ●                                     | ●                 |             |       |          | ●   |  |   |
| ●  | ●               |                        | ●                                     | ●                 |             |       |          | ●   |  |   |



## SERIES 630 631 634

### Standard Features At a Glance

- Available with UL and FM 3-hour labels for doors up to 12' (3.7 m) wide or high (630 Series only)
- Available with UL 3-hour labels for doors up to 12' (3.7 m) wide or high (631 Series only)
- Available with UL oversize label for doors up to 14' (4.2 m) wide or high (630 Series only)
- 4-hour UL label available for masonry fire walls (634 Series only)
- Oversize 4-hour UL label available for masonry fire walls (634 Series only)
- NFPA-80 compliant
- Labeled to meet New York City and California State Fire Marshal fire safety standards
- Fusible link separates at 165°F (74°C) to automatically close the door
- Governor controls rate of door descent during a fire
- UL-listed welded wall angle (630 Series) for face-of-wall applications in masonry fire walls eliminates drill and tap processes
- 1 1/2-hour UL label for non-masonry applications (630 and 631 Series)
- Guide assemble rest on sill for flush guide installation
- Locking standards
  - Slide bolt on push-up and crank
  - Drivetrain on motor

### Options

- Fire Sentinel™ time-delay release device (see page 18 and 19)
- FireLite® vision lites in 4-, 3-, and 1 1/2-hour labels
- UL-listed brush-type smoke gaskets
- Photoelectric or ionization-type smoke detectors
- Chain hoist (below 80 sq. ft. or 7432 sq.mm), crank or electric operation
- Powder-coat paint finish in 197 colors, or color-matched to architect's specification

The 630/631/634 Series rolling steel, fire-rated service doors offer superior protection wherever a listed fire door is required. Common applications include factories, warehouses, mills, distribution centers and parking garages. Customized fire doors are available for conveyor openings. These doors feature fusible links mounted on both sides of the wall that separate to automatically close the door. UL recommends a 165° F (74° C) fuse link for ambient conditions for 100° F (38° C) or less, or a 212° F (100° C) fuse link for ambient conditions over 100° F (38° C). Added protection features, such as Fire Sentinel™ and FireLite® vision lites are optional.

### Slat Selection and Finishes

Overhead Door Corporation offers the widest range of curtain slats and finishes in the industry. Fire door slats are available in curved or flat profile in either galvanized or stainless steel. Galvanized slats are finished with a rust-inhibitive, roll-coating process that incorporates baked-on prime paint, and a baked-on polyester top coat of gray or tan (optional). Stainless steel slats are manufactured with a No. 2B mill finish (standard) or No. 4 Brushed finish (optional).

### 197 Powder Coat Finishes



The Color Palette for Rolling Steel Products specifying all 197 powder coat finishes is available from your Overhead Door distributor.



Installation and Service: Overhead Door Company of Dallas-Commercial



# Rolling Service Fire Doors

**SERIES** 630 631 634

## PRODUCT APPLICATION CHART

| Door Label<br>Hour Rating | Mounting                    | Wall<br>Construction       | Max. Width           | Max. Height         | Max. Area                 | Agency            | Series |
|---------------------------|-----------------------------|----------------------------|----------------------|---------------------|---------------------------|-------------------|--------|
| 4                         | Face of Wall                | Masonry                    | 12'<br>(3658 mm)     | 12'<br>(3658 mm)    | 144 Sq Ft<br>(13.4 sq. m) | CUL<br>CSFM<br>FM | 634    |
| Oversize<br>4             | Face of Wall                | Masonry                    | 41' 2"<br>(12548 mm) | 25' 4"<br>(7722 mm) | 683 Sq Ft<br>(63.4 sq. m) | ULI<br>CSFM       | 634    |
| Oversize<br>4             | Face of Wall                | Masonry                    | 18**<br>(5486 mm)    | 18**<br>(5486 mm)   | 324 Sq Ft<br>(30.1 sq. m) | FM                | 634    |
| 3 / 1 1/2<br>3/4 / 1/2    | Face of Wall                | Masonry/Steel              | 12'<br>(3658 mm)     | 12'<br>(3658 mm)    | 144 Sq Ft<br>(13.4 sq. m) | CUL<br>CSFM       | 631    |
| Oversize<br>3 / 1 1/2     | Face of Wall                | Masonry/Steel              | 14'<br>(4267 mm)     | 12'<br>(3658 mm)    | 168 Sq Ft<br>(15.6 sq. m) | CUL<br>CSFM       | 631    |
| 3 / 1 1/2                 | Face of Wall                | Drywall<br>**              | 12'<br>(3658 mm)     | 12'<br>(3658 mm)    | 144 Sq Ft<br>(13.4 sq. m) | CUL<br>CSFM       | 631    |
| Oversize<br>3 / 1 1/2     | Face of Wall                | Drywall<br>**              | 14'<br>(4267 mm)     | 12'<br>(3658 mm)    | 168 Sq Ft<br>(15.6 sq. m) | CUL<br>CSFM       | 631    |
| 3 / 1 1/2                 | Face or B/T<br>Jamb ***     | Drywall<br>**              | 12'<br>(3658 mm)     | 12'<br>(3658 mm)    | 144 Sq Ft<br>(13.4 sq. m) | CUL<br>CSFM<br>FM | 630    |
| Oversize<br>3 / 1 1/2     | Face or B/T<br>Jamb ***     | Drywall<br>**              | 14'<br>(4267 mm)     | 12'<br>(3658 mm)    | 168 Sq Ft<br>(15.6 sq. m) | CUL<br>CSFM<br>FM | 630    |
| Oversize<br>3 / 1 1/2     | Face or B/T<br>Jamb ***     | Drywall w/Steel Tube<br>** | 16'<br>(4876.8 mm)   | 12'<br>(3658 mm)    | 192 Sq Ft<br>(17.8 sq. m) | CUL<br>CSFM       | 630    |
| 3 / 1 1/2                 | Face or B/T<br>Jamb ***     | Masonry/Steel              | 12'<br>(3658 mm)     | 12'<br>(3658 mm)    | 144 Sq Ft<br>(13.4 sq. m) | CUL<br>CSFM<br>FM | 630    |
| Oversize<br>3             | Face of Wall or<br>B/T Jamb | Masonry/Steel              | 24'<br>(7315.2 mm)   | 24'<br>(7315.2 mm)  | 576 Sq Ft<br>(53.5 sq. m) | CUL<br>CSFM       | 630    |
| Oversize<br>3             | Face of Wall                | Masonry/Steel              | 41' 2"<br>(12548 mm) | 25' 4"<br>(7722 mm) | 683 Sq Ft<br>(63.4 sq. m) | CUL<br>CSFM       | 630    |
| Oversize<br>3             | Face or B/T<br>Jamb ***     | Masonry/Steel              | 18**<br>(5486 mm)    | 18**<br>(5486 mm)   | 324 Sq Ft<br>(30.1 sq. m) | FM                | 630    |

\* FM reviews each size above the oversize service on a case basis.

\*\* Drywall with wood studs, steel studs or steel tubes. Drywall with steel studs must be minimum 14 gauge.

\*\*\* Between jamb doors are based on width of wall opening and from floor to top of coil (under lintel).

CUL Underwriters Laboratories (US & Canada), CSFM California State Fire Marshall, FM FM Global (Factory Mutual).

Information is subject to change. Please call your local Overhead Door distributor for special applications or if your application is not listed.



## Slat Data

**630 Face-of Wall Mounted**

| Slat | Opening Width         | Standard | Optional             |
|------|-----------------------|----------|----------------------|
| C187 | Thru 14'0" (4267 mm)  | 22 ga.*  | 20 ga. or 22 ga. ss* |
|      | Thru 20'0" (6096 mm)  | 20 ga.   | 18 ga. or 20 ga. ss  |
| C275 | Thru 14'0" (4267 mm)  | 22 ga.*  | 20 ga. or 22 ga. ss* |
|      | Thru 20'0" (6096 mm)  | 20 ga.   | 18 ga. or 20 ga. ss  |
|      | Thru 41'2" (12548 mm) | 18 ga.   | 16 ga.               |
| F265 | Thru 14'0" (4267 mm)  | 22 ga.*  | 20 ga. or 22 ga. ss* |
|      | Thru 20'0" (6096 mm)  | 20 ga.   | 18 ga. or 20 ga. ss  |
|      | Thru 41'2" (12548 mm) | 18 ga.   |                      |

Slats are galvanized and painted or stainless steel (ss).

\* Maximum wall opening height for 22 ga. is 12'0" (3658 mm).

**634 Face-of Wall Mounted**

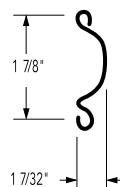
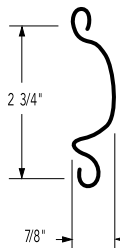
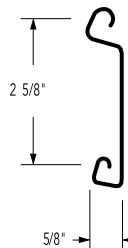
| Slat | Opening Width         | Standard | Optional            |
|------|-----------------------|----------|---------------------|
| C187 | Thru 20'0" (6096 mm)  | 20 ga.   | 18 ga. or 20 ga. ss |
| C275 | Thru 20'0" (6096 mm)  | 20 ga.   | 18 ga. or 20 ga. ss |
|      | Thru 41'2" (12548 mm) | 18 ga.   | 16 ga.              |
| F265 | Thru 20'0" (6096 mm)  | 20 ga.   | 18 ga. or 20 ga. ss |
|      | Thru 41'2" (12497 mm) | 18 ga.   |                     |

Slats are galvanized and painted or stainless steel (ss).

**631 Face-of Wall Mounted**

| Slat | Opening Width        | Standard |  |
|------|----------------------|----------|--|
| C187 | Thru 14'0" (4267 mm) | 24 ga.   |  |
| F265 | Thru 14'0" (4267 mm) | 24 ga.   |  |

Slats are galvanized and painted.

**C-187 Slat****C-275 Slat****F-265 Slat**

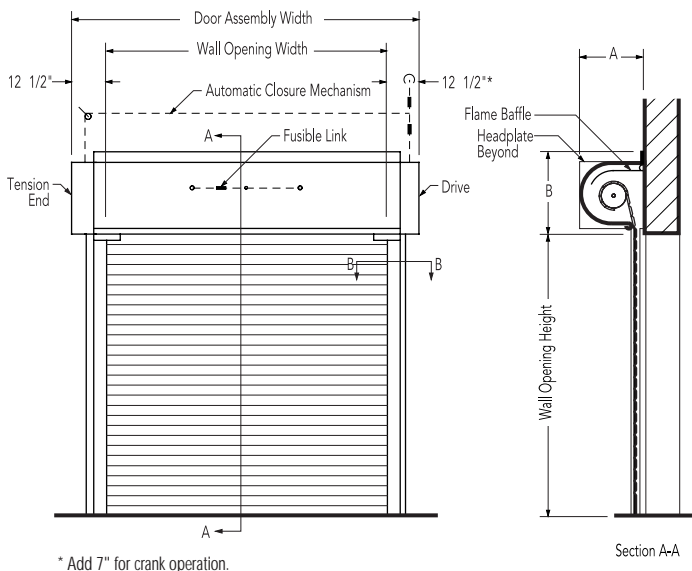
# Rolling Service Fire Doors

**SERIES** 630 631 634

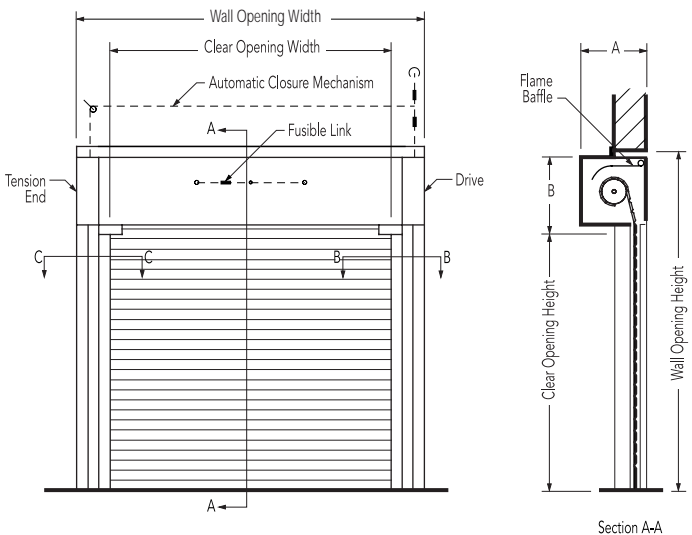
## Door Clearance Elevation

Operation: Push-up, crank, chain hoist or electric.  
For clearance details on electrically operated doors, see Motor Operator detail pages 20 and 21.

### Face-of-Wall Mounted

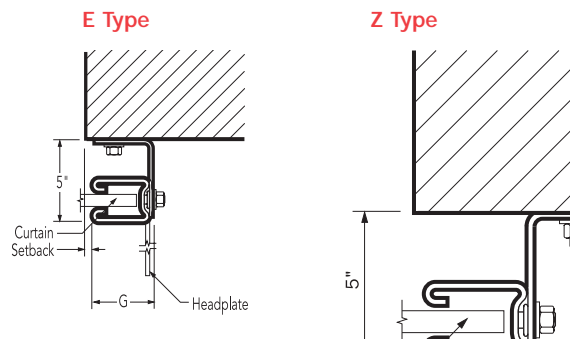


### Between Jambs Mounted



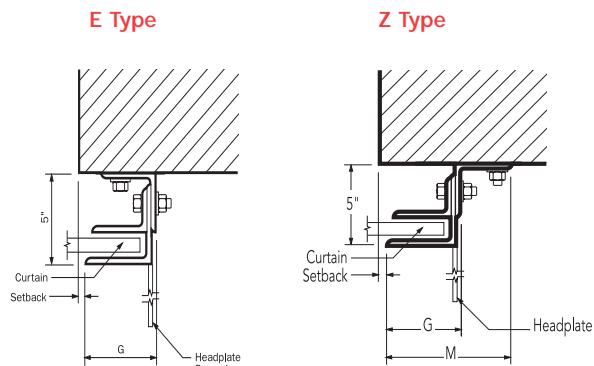
## Face-of-Wall-Rolled Guides

### Section B-B



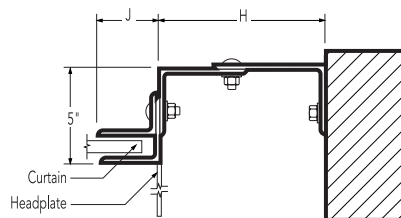
## Face-of-Wall-Angle Guides

### Section B-B

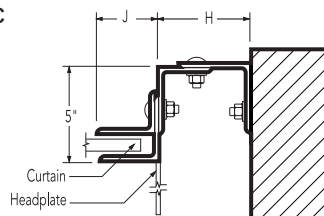


## Between Jambs-Angle Guides

### Drive Side - Electric, Chain or Crank Section B-B



### Tension Side Section C-C



Whenever expansion mounting bolts are used maintain a minimum of 6 bolt diameters from edge of wall

For more detailed information, refer to the Overhead Door Corporation's Architectural Design Manual, or consult your local Overhead Door Distributor.



## Headroom Clearance Dimensions

## C187 Slats – Dimensions A and B

| Max. Wall Opening Height* | C187 Slat Thru 14'- 0" Wide |                  | Thru 20'- 0" Wide |                  | Hood Angle Height | Expansion Gap  |
|---------------------------|-----------------------------|------------------|-------------------|------------------|-------------------|----------------|
|                           | A                           | B**              | A                 | B**              |                   |                |
| Thru 8'0" (2438 mm)       | 17 1/2" (445 mm)            | 19 5/8" (498 mm) | 21 1/2" (546 mm)  | 23 5/8" (600 mm) | 3 1/4" (83 mm)    | 1 1/4" (32 mm) |
| Thru 10'0" (3048 mm)      | 17 1/2" (445 mm)            | 19 5/8" (498 mm) | 21 1/2" (546 mm)  | 23 5/8" (600 mm) | 3 1/4" (83 mm)    | 1 1/2" (38 mm) |
| Thru 11'0" (3353 mm)      | 21 1/2" (597 mm)            | 23 5/8" (600 mm) | 21 1/2" (546 mm)  | 23 5/8" (600 mm) | 3 1/4" (83 mm)    | 1 3/4" (45 mm) |
| Thru 12'0" (3658 mm)      | 21 1/2" (597 mm)            | 23 5/8" (600 mm) | 21 1/2" (546 mm)  | 23 5/8" (600 mm) | 3 1/4" (83 mm)    | 1 3/4" (45 mm) |
| Thru 13'0" (3962 mm)      | 21 1/2" (546 mm)            | 23 5/8" (600 mm) | 21 1/2" (546 mm)  | 23 5/8" (600 mm) | 4" (102 mm)       | 2" (51 mm)     |
| Thru 14'0" (4267 mm)      | 21 1/2" (546 mm)            | 23 5/8" (600 mm) | 21 1/2" (546 mm)  | 23 5/8" (600 mm) | 4" (102 mm)       | 2" (51 mm)     |
| Thru 16'0" (4877 mm)      | 21 1/2" (597 mm)            | 23 5/8" (600 mm) | 21 1/2" (546 mm)  | 23 5/8" (600 mm) | 4" (102 mm)       | 2 1/4" (57 mm) |
| Thru 18'0" (5486 mm)      | 21 1/2" (546 mm)            | 23 5/8" (600 mm) | 21 1/2" (546 mm)  | 23 5/8" (600 mm) | 4" (102 mm)       | 2 1/2" (64 mm) |
| Thru 19'0" (5791 mm)      | 21 1/2" (597 mm)            | 23 5/8" (600 mm) | 21 1/2" (546 mm)  | 23 5/8" (600 mm) | 4 3/4" (121 mm)   | 2 3/4" (70 mm) |
| Thru 21'0" (6401 mm)      | 21 1/2" (597 mm)            | 23 5/8" (600 mm) | 21 1/2" (546 mm)  | 23 5/8" (600 mm) | 4 3/4" (121 mm)   | 3" (76 mm)     |
| Thru 24'0" (7315 mm)      | 23 1/2" (597 mm)            | 25 5/8" (651 mm) | 25 1/2" (546 mm)  | 27 5/8" (702 mm) | 4 3/4" (121 mm)   | 3 1/4" (83 mm) |

## C275 Slats – Dimensions A and B

| Max. Wall Opening Height* | C275 Slat Thru 14'- 0" Wide |                  | Thru 20'- 0" Wide |                  | Thru 24'- 0" Wide |                  | Hood Angle Height | Expansion Gap  |
|---------------------------|-----------------------------|------------------|-------------------|------------------|-------------------|------------------|-------------------|----------------|
|                           | A                           | B**              | A                 | B**              | A                 | B**              |                   |                |
| Thru 8'0" (2438 mm)       | 19 1/2" (495 mm)            | 21 5/8" (549 mm) | 21 1/2" (546 mm)  | 23 5/8" (600 mm) | 21 1/2" (546 mm)  | 23 5/8" (600 mm) | 3 1/4" (83 mm)    | 1 1/4" (32 mm) |
| Thru 10'0" (3048 mm)      | 19 1/2" (495 mm)            | 21 5/8" (549 mm) | 21 1/2" (546 mm)  | 23 5/8" (600 mm) | 21 1/2" (546 mm)  | 23 5/8" (600 mm) | 3 1/4" (83 mm)    | 1 1/2" (38 mm) |
| Thru 11'0" (3353 mm)      | 19 1/2" (495 mm)            | 21 5/8" (546 mm) | 21 1/2" (546 mm)  | 23 5/8" (600 mm) | 23 1/2" (597 mm)  | 25 5/8" (651 mm) | 3 1/4" (83 mm)    | 1 3/4" (45 mm) |
| Thru 12'0" (3658 mm)      | 21 1/2" (546 mm)            | 23 5/8" (600 mm) | 21 1/2" (546 mm)  | 23 5/8" (600 mm) | 23 1/2" (597 mm)  | 25 5/8" (651 mm) | 3 1/4" (83 mm)    | 1 3/4" (45 mm) |
| Thru 13'0" (3962 mm)      | 21 1/2" (546 mm)            | 23 5/8" (600 mm) | 21 1/2" (546 mm)  | 23 5/8" (600 mm) | 23 1/2" (597 mm)  | 25 5/8" (651 mm) | 4" (102 mm)       | 2" (51 mm)     |
| Thru 14'0" (4267 mm)      | 21 1/2" (546 mm)            | 23 5/8" (600 mm) | 21 1/2" (546 mm)  | 23 5/8" (600 mm) | 23 1/2" (597 mm)  | 25 5/8" (651 mm) | 4" (102 mm)       | 2" (51 mm)     |
| Thru 16'0" (4877 mm)      | 21 1/2" (546 mm)            | 23 5/8" (600 mm) | 21 1/2" (546 mm)  | 23 5/8" (600 mm) | 25 1/2" (651 mm)  | 27 5/8" (702 mm) | 4" (102 mm)       | 2 1/4" (57 mm) |
| Thru 18'0" (5486 mm)      | 21 1/2" (546 mm)            | 23 5/8" (600 mm) | 25 1/2" (651 mm)  | 27 5/8" (702 mm) | •                 | •                | 4" (102 mm)       | 2 1/2" (64 mm) |
| Thru 19'0" (5791 mm)      | 23 1/2" (597 mm)            | 25 5/8" (651 mm) | 25 1/2" (651 mm)  | 27 5/8" (702 mm) | •                 | •                | 4 3/4" (121 mm)   | 2 3/4" (70 mm) |
| Thru 21'0" (6401 mm)      | 23 1/2" (597 mm)            | 25 5/8" (651 mm) | 27 1/2" (702 mm)  | 29 5/8" (752 mm) | •                 | •                | 4 3/4" (121 mm)   | 3" (76 mm)     |
| Thru 24'0" (7315 mm)      | 25 1/2" (648 mm)            | 27 5/8" (702 mm) | •                 | •                | •                 | •                | 4 3/4" (121 mm)   | 3 1/4" (83 mm) |

• Consult factory

## F265 Slats – Dimensions A and B

| Max. Wall Opening Height* | F265 Slat Thru 14'- 0" Wide |                  | Thru 20'- 0" Wide |                  | Thru 24'- 0" Wide |                  | Hood Angle Height | Expansion Gap  |
|---------------------------|-----------------------------|------------------|-------------------|------------------|-------------------|------------------|-------------------|----------------|
|                           | A                           | B**              | A                 | B**              | A                 | B**              |                   |                |
| Thru 8'0" (2438 mm)       | 21 1/2" (546 mm)            | 23 5/8" (600 mm) | 21 1/2" (546 mm)  | 23 5/8" (600 mm) | 21 1/2" (546 mm)  | 23 5/8" (600 mm) | 3 1/4" (83 mm)    | 1 1/4" (32 mm) |
| Thru 10'0" (3048 mm)      | 21 1/2" (546 mm)            | 23 5/8" (600 mm) | 21 1/2" (546 mm)  | 23 5/8" (600 mm) | 21 1/2" (546 mm)  | 23 5/8" (600 mm) | 3 1/4" (83 mm)    | 1 1/2" (38 mm) |
| Thru 11'0" (3353 mm)      | 21 1/2" (546 mm)            | 23 5/8" (600 mm) | 21 1/2" (546 mm)  | 23 5/8" (600 mm) | 23 1/2" (597 mm)  | 25 5/8" (651 mm) | 3 1/4" (83 mm)    | 1 3/4" (45 mm) |
| Thru 12'0" (3658 mm)      | 21 1/2" (546 mm)            | 23 5/8" (600 mm) | 21 1/2" (546 mm)  | 23 5/8" (600 mm) | 23 1/2" (597 mm)  | 25 5/8" (651 mm) | 3 1/4" (83 mm)    | 1 3/4" (45 mm) |
| Thru 13'0" (3962 mm)      | 21 1/2" (546 mm)            | 23 5/8" (600 mm) | 21 1/2" (546 mm)  | 23 5/8" (600 mm) | 23 1/2" (597 mm)  | 25 5/8" (651 mm) | 4" (102 mm)       | 2" (51 mm)     |
| Thru 14'0" (4267 mm)      | 21 1/2" (546 mm)            | 23 5/8" (600 mm) | 21 1/2" (546 mm)  | 23 5/8" (600 mm) | 23 1/2" (597 mm)  | 25 5/8" (651 mm) | 4" (102 mm)       | 2" (51 mm)     |
| Thru 16'0" (4877 mm)      | 23 1/2" (597 mm)            | 25 5/8" (651 mm) | 23 1/2" (597 mm)  | 25 5/8" (651 mm) | 25 1/2" (648 mm)  | 27 5/8" (702 mm) | 4" (102 mm)       | 2 1/4" (57 mm) |
| Thru 18'0" (5486 mm)      | 23 1/2" (597 mm)            | 25 5/8" (651 mm) | 23 1/2" (597 mm)  | 25 5/8" (651 mm) | •                 | •                | 4" (102 mm)       | 2 1/2" (64 mm) |
| Thru 19'0" (5791 mm)      | 23 1/2" (597 mm)            | 25 5/8" (651 mm) | 25 1/2" (648 mm)  | 27 5/8" (702 mm) | •                 | •                | 4 3/4" (121 mm)   | 2 3/4" (70 mm) |
| Thru 21'0" (6401 mm)      | 23 1/2" (597 mm)            | 25 5/8" (648 mm) | 27 1/2" (699 mm)  | 29 5/8" (752 mm) | •                 | •                | 4 3/4" (121 mm)   | 3" (76 mm)     |
| Thru 24'0" (7315 mm)      | •                           | •                | •                 | •                | •                 | •                | 4 3/4" (121 mm)   | 3 1/4" (83 mm) |

• Consult factory

## C187 C275 F265 Slats – Dimensions G and M\*\*\* Guide Clearance Dimensions

| Max. Wall Opening Widths | G               | M               | J               | H (Tension end) | Dimension H*** Drive End |                 |
|--------------------------|-----------------|-----------------|-----------------|-----------------|--------------------------|-----------------|
|                          |                 |                 |                 |                 | Type of Operation        | H               |
| Thru 8'0" (2438 mm)      | 3 1/4" (83 mm)  | 5 1/2" (140 mm) | 2 3/4" (70 mm)  | 4" (102 mm)     | Push-Up                  | 4" (102 mm)     |
| Thru 12'0" (3658 mm)     | 3 3/4" (95 mm)  | 6" (152 mm)     | 3 1/4" (83 mm)  | 4" (102 mm)     | Electric, Chain, Crank   | 7 1/2" (191 mm) |
| Thru 14'0" (4267 mm)     | 4" (102 mm)     | 5 3/4" (146 mm) | 3 1/2" (89 mm)  | 4" (102 mm)     |                          |                 |
| Thru 16'0" (4877 mm)     | 4 1/4" (108 mm) | 6" (152 mm)     | 3 1/2" (89 mm)  | 4 1/2" (114 mm) |                          |                 |
| Thru 20'0" (6401 mm)     | 4 3/4" (121 mm) | 7" (178 mm)     | 4 1/4" (108 mm) | 4 1/2" (114 mm) |                          |                 |
| Thru 24'0" (7315 mm)     | 5 3/4" (146 mm) | 8" (203 mm)     | 5 1/4" (133 mm) | 5 1/4" (133 mm) |                          |                 |

\*Height limit for non-masonry jambs is 12'0" (3658 mm). \*\*Add 2" (51 mm) for electric operation. \*\*\*For max. wall opening height of 12' (3658 mm).



### ARCHITECTURAL SPECIFICATIONS\*

630 631 634

#### PART 1 GENERAL

##### 1.01 Work Included

The doors will be Series 630, 631 or 634 as manufactured by Overhead Door Corporation.

##### 1.02 Related Work

Opening preparation, miscellaneous or structural metal work, access panels, finish or field painting, field electrical wiring, wire, conduit, fuses and disconnect switches are in the Scope of Work of other divisions or trades.

##### 1.03 Quality Assurance

In accordance with accepted quality assurance guidelines for motor-operated doors, both the rolling service fire door and electric operator (optional) shall be manufactured by a single-source producer of door systems; as by Overhead Door Corporation.

#### PART 2 PRODUCT

##### 2.01 Curtain

Curtain will be interlocking roll-formed slats as specified following. Endlocks will be attached to each end of alternate slats to prevent lateral movement.

##### *Series 630/634*

Curved profile type C-187 for doors thru 14'0" (4267 mm) wide by 12'0" (3658 mm) high, fabricated of 22 gauge galvanized steel. (Optional 20 ga. galvanized or 22 ga. stainless steel.)

Curved profile type C-187 for doors over 14'0" (4267 mm) thru 20'0" (6096 mm) wide, fabricated of 20 gauge galvanized steel. (Optional 18 ga. galvanized or 20 ga. stainless steel.)

Curved profile type C-275 for doors thru 14'0" (4267 mm) wide by 12'0" (3658 mm) high, fabricated of 22 gauge galvanized steel. (Optional 20 ga. galvanized or 22 ga. stainless steel.)

Curved profile type C-275 for doors over 14'0" (4267 mm) thru 20'0" (3658 mm) wide, fabricated of 20 gauge galvanized steel. (Optional 18 ga. galvanized or 20 ga. stainless steel.)

Curved profile type C-275 for doors over 20'0" (6096 mm) thru 41'2" (12548 mm) wide, fabricated of 18 gauge galvanized steel. (Optional 16 ga. galvanized steel.)

Flat profile type F-265 for doors thru 14'0" (4267 mm) wide by 12'0" (3658 mm) high, fabricated of 22 gauge galvanized steel. (Optional 20 ga. galvanized or 22 ga. stainless steel.)

Flat profile type F-265 for doors over 14'0" (4267 mm) thru 20'0" (6096 mm) wide, fabricated of 20 gauge galvanized steel. (Optional 18 ga. galvanized or 20 ga. stainless steel.)

Flat profile type F-265 for doors over 20'0" (6096 mm) thru 41'2" (12548 mm) wide, fabricated of 18 gauge galvanized steel.

##### *Series 631*

Curved profile type C-187 for doors thru 14'0" (4267 mm) wide, fabricated of 24 gauge galvanized steel.

Flat profile type F-265 for doors thru 14'0" (4267 mm) wide, fabricated of 24 gauge galvanized steel.

##### 2.02 Bottom Bar

Bottom bar will be two back to back structural steel angles 1 1/2" (38 mm) by 1 1/2" (38 mm) by 1/8" (3 mm) minimum. (Optional single angle for conveyor applications.) (Optional galvanized or stainless steel.) (Optional sloping bottom bar within UL limits)

##### 2.03 Guides

##### *630 Series/631 Series*

Guides will be roll-formed steel shapes attached to continuous steel wall angle for doors thru 12' (3658 mm) wide. Three structural steel angles with minimum thickness of 3/16" (5 mm) for doors over 12' (3658 mm) wide. Guides for between jamb doors will be structural angles.

##### *634 Series*

Guides will be three structural steel angles with a minimum thickness of 3/16" (5 mm) mounted to the face of the jamb.

##### 2.04 Brackets

Brackets will be steel plate to support counterbalance, curtain and hood.

##### 2.05 Counterbalance

Counterbalance will be helical torsion spring type housed in a steel tube or pipe barrel, supporting the curtain with deflection limited to 0.03" (0.75 mm) per foot of span. Counterbalance will be adjustable.

##### 2.06 Hood

##### *630/634 Series*

Hood will be 24 gauge galvanized primed steel minimum for wall openings thru 19' (5791 mm) wide. 22 gauge galvanized primed steel for wall openings over 19' (5791 mm) wide. Hood will be equipped with thermally controlled, internal, galvanized steel flame baffle. Provide one intermediate support bracket for wall openings over 13'6" (4115 mm) wide and two support brackets for wall openings over 19'0" (5791 mm) wide.

##### *631 Series*

Hood will be 24 gauge galvanized primed steel. Hood will include one intermediate support bracket for openings over 13'6" (4115 mm) wide.

##### 2.07 Finish

Steel slats and hood will be galvanized in accordance with ASTM A 653 and receive rust-inhibitive, roll coating process, including 0.2 mils thick baked-on prime paint, and 0.6 mils thick baked-on polyester gray (optional tan) (optional powder



coated) top coat. Non-galvanized exposed ferrous surfaces shall receive one coat of rust-inhibitive primer. (Optional stainless steel slats will be 2B mill finish or No. 4 satin finish.).

#### 2.08 Color

Polyester top coat shall be grey or tan. (Powder coating finish in color is optional.)

#### 2.09 Glazing

(Optional fire-rated vision panels, up to four glazing panels 3" (76 mm) by 5/8" (16 mm); FireLite glazing as manufactured by Nippon Electric Glass Co.) Available on 4 hour, 3 hour, and 90 minute label doors.

#### 2.10 Operation

Standard operation will be manual push up to approximately 80 sq ft. (7432 sq.mm), standard chain operation over approximately 80 sq ft. (7432 sq.mm) (Optional chain hoist, crank.) Optional electric motor operation will be UL listed electric operator, size as recommended by manufacturer to move door in either direction at not less than 2/3 foot (203 mm) nor more than 1 foot (305 mm) per second. (Optional sensing edge protection will be Pneumatic or Electric. Electric sensing edge available as a 2 wire or 4 wire "Fail-Safe" version). Operator controls will be Push-button (Optional Key or Keyed push-button) operated control stations with open, close, and stop buttons for surface (flush) mounting, for interior (exterior)(both interior and exterior) location.

#### 2.11 Automatic Closure

Automatic closure, thermally controlled by means of 165 degree or 212 degree fusible links. Operating mechanism will be disengaged during automatic closing. Automatic closing rate will be controlled by a governor. (Optional "Fail-Safe" Time Delay Release Device, UL and UL 864 rated; Fire Sentinel™ Model A, Model B, Model B2, B2 Master/Slave and Model C, C+ (Refer to page 18 & 19) (Automatic Closure on alarm available by 3 modes initiated by central fire alarm system)

- Fire sentinel releases to close door on alarm
- Fire sentinel closes electrically operated fire door electrically on alarm\*\* when power is on
- Fire sentinel closes electrically operated fire doors electrically on alarm\*\* when power is off and uninterrupted power supply (UPS) is provided with electrical operator

#### 2.12 Locking

(Optional locking mechanisms include interior bottom bar slide bolt, interior slide lock for electric operation with interlock switch or cylinder locking bottom bar with mortise cylinders.)

#### 2.13 Wall Mounting Condition

Standard mounting will be face-of-wall mounting (Optional between jambs mounting.)

#### 2.14 Label

##### 630 Series

Rolling fire doors up to 144 sq. ft. (13378 sq.mm) and 12' (3658 mm) in width or height shall bear the (UL and FM 3-Hour Label.) (ULC 3-Hour label.) (UL and FM 1 1/2 Hour Label for non-masonry fire walls.)

Rolling fire doors over 144 sq. ft. (13378 sq.mm) will receive the UL Oversize Fire Door Label.

Rolling fire doors over 144 sq. ft. (13378 sq.mm) and not exceeding 18' in (5486 mm) height or width will receive the Factory Mutual Label for Oversize Fire Doors. Doors over 18' must be reviewed by FM.

##### 631 Series

Rolling fire doors up to 144 sq. ft. (13378 sq.mm) and 12' (3658 mm) in width or height shall bear the UL 3-Hour Label and the UL 1 1/2 Hour Label for non-masonry fire walls.

Rolling fire doors over 144 sq. ft. (13378 sq.mm) will receive the UL Oversize Fire Door Label. Maximum authorized wall opening is 14'0" (4267 mm) wide x 12'0" (3658 mm) high.

##### 634 Series

Rolling fire doors up to 144 sq. ft. (13378 sq.mm) and 12' (3658 mm) in width and height will bear the UL 4-Hour Label.

Rolling fire doors over 144 sq. ft. (13378 sq.mm) or over 12' (3658 mm) in width or height will receive the UL Oversize Fire Door Label.

## PART 3 EXECUTION

#### 3.01 Installation

Install the door in accordance with Overhead Door Corporation instructions and standards using an authorized Overhead Door Corporation Distributor or representative. Install Rolling Fire Doors in compliance with the requirements of NFPA 80.

#### 3.02 Testing

Test fire-release system and reset components after testing. Instruct owner's personnel in proper operating procedures and maintenance schedules.

\*Note to specifiers: Words in parentheses indicate frequently specified and highly recommended options.

\*\*Safety sensing edge required

# Counter Fire Doors

## SERIES 640 641

### Standard Features At a Glance

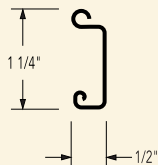
- Available with UL and FM 3-hour Class A labels for masonry fire walls
- Available with a UL 1 1/2-hour Class B label for applications in non-masonry fire walls of dry wall with wood, steel studs, or steel tube jambs
- NFPA-80 compliant
- Fusible link separates at 165°F (74°C) to automatically close the door
- Governor controls rate of door descent during a fire
- Compact box guide design for an attractive appearance
- Upward-expanding guide design for flush to countertop installation
- Flat slat curtain design in primed galvanized steel finish (640 Series) or No. 4 stainless steel finish (641 Series)
- Slide bolt locking on push-up/crank

### Options

- Fire Sentinel™ time-delay release device (see page 18 and 19)
- FireLite® vision lites in 4-, 3-, and 1 1/2-hour curtains
- Firestop® fire-resistant core countertops surfaced with the most popular brands of decorative laminates
- UL-listed brush-type smoke gaskets
- Photoelectric or ionization-type smoke detectors
- Crank or electric operation
- Electric operation does not require tension reset after drop test or closure due to power loss
- Powder-coat paint finish in 21 standard colors, 172 custom colors, or color-matched to architect's specification

### Slat Data

F128 Slat



| Series | Slat | Opening Width        | Standard  |
|--------|------|----------------------|-----------|
| 640    | F128 | Thru 14'0" (4267 mm) | 22 ga.    |
| 641    | F128 | Thru 14'0" (4267 mm) | 22 ga. ss |

*Slats are galvanized and painted or stainless steel (ss).*

The 640 and 641 Series doors are ideal for openings requiring a counter-type fire-rated door. Common applications include factories, schools, concessions, hospitals, cafeterias and retail settings. Labeled with either a 3-hour Class A rating for masonry applications, or a 1 1/2-hour Class B label in non-masonry fire walls, these doors are designed to expand upward in a fire, allowing the guides to be installed flush with the sill. Their compact, box-like form also provides an attractive finished appearance that requires minimum sideroom. The 640 Series has exposed components made of primed galvanized steel while the 641 Series exposed components are of stainless steel.

These doors are also available with a 1 1/2-hour fire-rated countertop with fire-resistant core and a variety of popular decorative laminate finishes. Added protection features, such as Fire Sentinel™ and FireLite® vision lites are optional.

Series 640 and 641 counter fire doors are UL approved and can be custom designed for conveyor openings.

*Installation and Service: Overhead Door Company of Huntsville*







## PRODUCT APPLICATION CHART

| Door Label  | Mounting                                   | Wall Construction | Max. Width                 | Max. Height                | Max. Area                   | Agency      | Series             |
|---|--|-------------------|----------------------------|----------------------------|-----------------------------|-------------|--------------------|
| 3 Hr/1 1/2 Hr<br>3/4 Hr/1 1/2 Hr                          | Face of Wall                               | Masonry/Steel     | 12'<br>(3658 mm)           | 10'<br>(3048 mm)           | 120 Sq Ft<br>(11148 sq.mm)  | ULI<br>CSFM | 640/641            |
| Oversize 3 Hr<br>1 1/2 Hr                                 | Face of Wall                               | Masonry/Steel     | 14'<br>(4267 mm)           | 10'<br>(3048 mm)           | 140 Sq Ft<br>(13006 sq.mm)  | ULI<br>CSFM | 640/641            |
| 1 1/2 Hr  | Face of Wall                               | UL 411 Wall       | 12'<br>(3658 mm)           | 10'<br>(3048 mm)           | 120 Sq Ft<br>(11148 sq.mm)  | ULI<br>CSFM | 640/641            |
| Oversize 1 1/2 Hr   | Face of Wall                               | UL411 Wall        | 14'<br>(4267 mm)           | 10"<br>(3048 mm)           | 140 Sq Ft<br>(13006 sq.mm)  | ULI<br>CSFM | 640/641            |
| Oversize 3 Hr<br>1 1/2 Hr                                 | B/T Jamb's *                               | Masonry/Steel     | 12' - 11 1/4"<br>(3943 mm) | 11' - 2 9/16"<br>(3418 mm) | 145 Sq Ft<br>(13471 sq.mm)  | ULI<br>CSFM | 640/641            |
| 1 1/2 Hr  | B/T Jamb's *                               | UL 411 Wall       | 10'10"<br>(3302 mm)        | 10'10"<br>(3302 mm)        | 117 Sq Ft<br>(10870 sq. mm) | ULI<br>CSFM | 640/641            |
| 3 Hr/1 1/2 Hr<br>3/4 Hr/1 1/2 Hr                          | Face of Wall                               | Masonry/Steel     | 12'<br>(3658 mm)           | 10'<br>(3048 mm)           | 120 Sq Ft<br>(11148 sq.mm)  | FM          | 640/641            |
| Oversize 3 Hr<br>1 1/2 Hr                                 | Face of Wall                               | Masonry/Steel     | 14'<br>(4267 mm)           | 10'<br>(3048 mm)           | 140 Sq Ft<br>(13006 sq.mm)  | FM          | 640/641            |
| 1 1/2 Hr  | Face of Wall                               | UL 411 Wall       | 12'<br>(3658 mm)           | 10'<br>(3048 mm)           | 120 Sq Ft<br>(11148 sq.mm)  | FM          | 640/641            |
| Oversize 1 1/2 Hr   | Face of Wall                               | UL 411 Wall       | 14'<br>(4267 mm)           | 10'<br>(3048 mm)           | 140 Sq Ft<br>(13006 sq.mm)  | FM          | 640/641            |
| Oversize 3 Hr<br>1 1/2 Hr                                 | B/T Jamb's*                                | Masonry Wall      | 12' - 11 1/4"<br>(3943 mm) | 11'- 2 9/16"<br>(3353 mm)  | 145 Sq Ft<br>(13006 sq.mm)  | FM          | 640/641            |
| 1 1/2 Hr  | B/T Jamb's*                                | UL 411 Wall       | 10'-10"<br>(3302 mm)       | 10'-10"<br>(3302 mm)       | 117 Sq Ft<br>(10870 sq.mm)  | FM          | 640/641            |
| 1 1/2 Hr<br>Oversize 1 1/2 Hr                             | Fire Rated Plastic<br>Laminated Countertop | Same as 640/641   | 15'<br>(4572 mm)           | 4' (deep)<br>(1219 mm)     | 60 Sq Ft<br>(5574 sq.mm)    | WHI         |                    |
| 1/3 Hr "S" Smoke Label<br>Oversize 1/3 Hr "S" Smoke Label | Masonry, Steel<br>Masonry, Steel           | UL 411<br>UL 411  | 8'<br>12'                  | 9'<br>10'                  | 72 Sq Ft<br>120 Sq Ft       | UL<br>UL    | 640/641<br>640/641 |

\* - Between jamb doors are based on the width of wall and from floor to top of coil (under lintel)

ULI -Underwriters Laboratories, Inc.

CSFM -California State Fire Marshall

WHI -Warnock Hersey International

Information is subject to change. Please call your local Overhead Door distributor for special applications or if your application is not listed.

### ARCHITECTURAL SPECIFICATIONS\*

640 641

#### PART 1 GENERAL

##### 1.01 Work Included

The doors will be Series 640 or 641 as manufactured by Overhead Door Corporation.

##### 1.02 Related Work

Opening preparation, miscellaneous or structural metal work, access panels, finish or field painting, field electrical wiring, wire, conduit, fuses and disconnect switches are in the Scope of Work of other divisions or trades.

##### 1.03 Quality Assurance

In accordance with accepted quality assurance guidelines for motor-operated doors, both the rolling service fire door and electric operator (optional) shall be manufactured by a single-source producer of door systems; as by Overhead Door Corporation.

#### PART 2 PRODUCT

##### 2.01 Curtains

Curtain will be interlocking slats, type F-128 fabricated of 22 gauge galvanized steel (640 Series) or 22 gauge stainless steel (641 Series). Endlocks will be attached to ends of alternate slats to maintain curtain alignment and prevent lateral movement.

##### 2.02 Bottom Bar

Bottom bar will be a single primed angle (640 Series) or stainless steel angle (641 Series). (Optional tubular locking bottom bar.) (Optional with 1/4" (6 mm) bottom astragal)

##### 2.03 Guides

Guides will be roll-formed, painted steel shapes (640 Series) or stainless steel shapes (641 Series).

##### 2.04 Brackets

Brackets will be painted steel to support counterbalance, curtain and hood.

##### 2.05 Counterbalance

Counterbalance will be helical torsion spring type housed in a steel tube or pipe barrel.

##### 2.06 Hood

Hood will be galvanized painted steel (640 Series) or stainless steel (641 Series). Hood will be equipped with a thermally controlled, internal flame baffle. Provide support for openings over 13'6" (4115 mm) wide. (Optional exterior brush smoke seal)

##### 2.07 Finish

###### 640 Series

Steel slats and hood will be galvanized in accordance with ASTM A 653 and receive rust-inhibitive, roll coating process, including 0.2 mils thick baked-on prime paint, and 0.6 mils thick baked-on polyester gray (optional powder coated) top coat. Non-galvanized exposed ferrous surfaces shall receive one coat of rust-inhibitive primer.

###### 641 Series

Slats and hood will be stainless steel with No. 4 finish.

##### 2.08 Glazing

(Optional fire-rated vision panels, up to four glazing panels 3" (76 mm) by 5/8" (16 mm); FireLite glazing as manufactured by Nippon Electric Glass Co.)

##### 2.09 Operation

Standard Operation will be manual push up. (Optional crank.) Optional Electric Motor Operation will be UL listed electric operator, size as recommended by manufacturer to move door in either direction at not less than 2/3 (203 mm) foot nor more than 1 foot (305 mm) per second. (Optional sensing edge protection will be Electric.) Operator controls will be Push-button (Optional Key or Keyed push-button) operated control stations with open, close, and stop buttons for surface (flush) mounting, for interior (exterior)(both interior and exterior) location. Electric operator has integral governor to control closing speed of the curtain during drop test or automatic closing during a fire. No counter balance tension is released during automatic closing, so reset is accomplished by resetting the operator release arm.

##### 2.10 Automatic Closure

Automatic closure will be thermally controlled by means of 165 degree fusible links. Operating mechanism will be disengaged during automatic closing. Automatic closing rate be controlled by a governor per NFPA 80 requirements.

(Optional Time Delay Release Device Fail Safe, UL/FM and UL 864 rated; Fire Sentinel™ Model A, Model B, Model B2, Model B2 Master/Slave and Model C, C+ (Refer to page 18 & 19) (Optional automatic closing on alarm by electric operator with uninterruptible power supply for operator.)

##### 2.11 Locking

Locking mechanism will be interior bottom bar slide bolt. (Optional cylinder lock.)

##### 2.12 Wall Mounting Condition

Mounting will be face-of-wall or between jambs.

##### 2.13 Label

Provide counter fire doors certified with:

UL and FM 3-Hour Class A Label for masonry fire walls UL and FM 1 1/2 Hour Class B Label for non-masonry fire walls

## PART 3 EXECUTION

### 3.01 Installation

Install the door in accordance with Overhead Door Corporation instructions and standards using an authorized Overhead Door Corporation Distributor or representative.

Install Rolling Fire Doors in compliance with the requirements of NFPA 80.

### 3.02 Testing

Test fire-release system and reset components after testing.

Instruct owner's personnel in proper operating procedures and maintenance schedules.

*\*Note to specifiers: Words in parentheses indicate frequently specified and highly recommended options.*

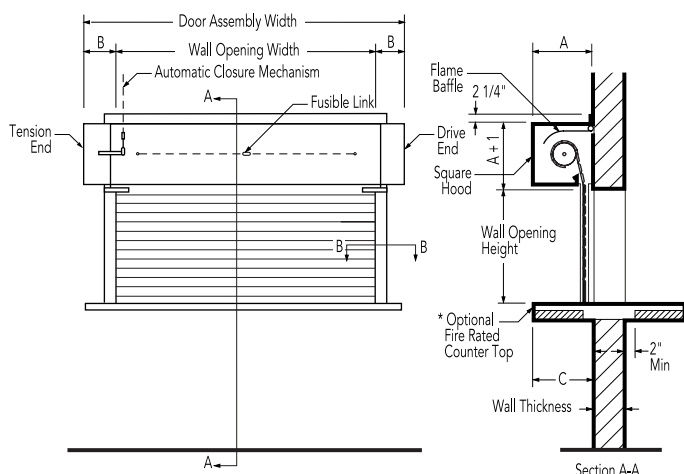
#### Door Clearance Elevation

#### Guides

Operation: Push-up, crank or electric.

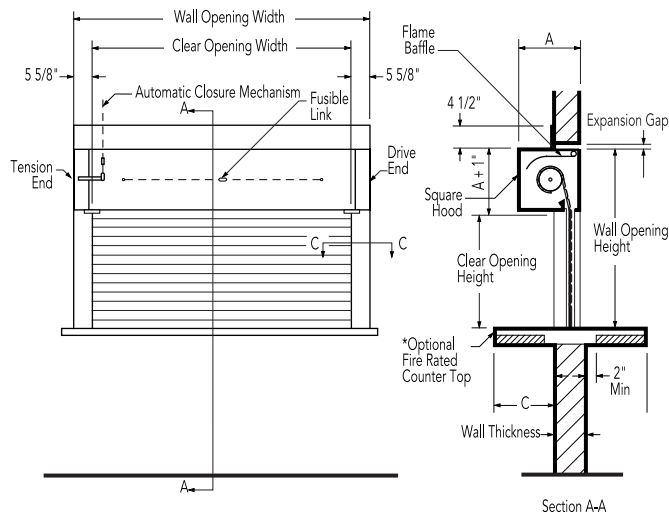
For clearance details on electrically operated doors, see Motor Operator detail pages at back of this section.

#### Face-of-Wall Mounted



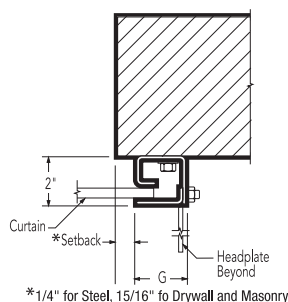
\* Optional 1 1/2 hour fire rated countertop available up to 48" (1.2 m) deep and 15' (4.5 m) long.

#### Between Jambes Mounted

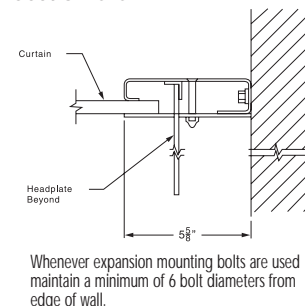


\* Optional 1 1/2 hour fire rated countertop.

#### Face-of-Wall Mounted Section B-B



#### Between Jambes Mounted Section C-C



#### Dimension A Wall Opening Heights up to 10'0" (3048 mm) F128 Slat

##### Maximum Wall Opening Height

|                      |              |
|----------------------|--------------|
| Thru 5'0" (1524 mm)  | 10" (254 mm) |
| Thru 10'0" (3048 mm) | 12" (305 mm) |

Slats are galvanized and painted.

#### Dimension B Wall Opening Widths up to 14'0" (4267 mm) F128 Slat

##### Maximum Wall Opening Height

|                      |                             |
|----------------------|-----------------------------|
| Thru 8'0" (2438 mm)  | 4 15/16" (125 mm) + setback |
| Thru 14'0" (4267 mm) | 5 5/8" (143 mm) + setback   |

Slats are galvanized and painted.

#### Dimension C Rated Counter Top Coil Side Dimension

| Maximum Wall Opening Width | Minimum C       |
|----------------------------|-----------------|
| Up to 5'0" (1524 mm)       | 3 1/2" (89 mm)  |
| 5'1" to 6'0" (to 1829 mm)  | 4" (101 mm)     |
| 6'1" to 8'0" (to 2438 mm)  | 4 1/2" (114 mm) |
| 8'1" to 10'0" (to 3048 mm) | 5 1/2" (139 mm) |

#### Dimension G Wall Opening Widths up to 14'0" (4267 mm) F128 Slat

##### Maximum Wall Opening Height

|                      |                  |
|----------------------|------------------|
| Thru 8'0" (2438 mm)  | 1 15/16" (49 mm) |
| Thru 14'0" (4267 mm) | 2 5/8" (67 mm)   |

Slats are galvanized and painted.

#### Wall Opening Widths up to 12'11" (3937 mm) F128 Slat

| Maximum Wall Opening Height | Expansion Gap  |
|-----------------------------|----------------|
| Thru 4'0" (1219 mm)         | 3/4" (19 mm)   |
| Thru 6'0" (to 1829 mm)      | 1 1/8" (28 mm) |
| Thru 8'0" (to 2438 mm)      | 1 1/2" (38 mm) |
| Thru 10'0" (to 3048 mm)     | 1 7/8" (47 mm) |
| Thru 11'2" (to 3353 mm)     | 2" (51 mm)     |



# Integral Frame and Sill Counter Fire Doors

## SERIES 660 661 662

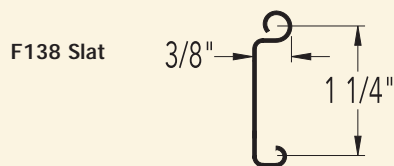
### Standard Features At a Glance

|                        |   |
|------------------------|---|
| Label                  | UL 1 1/2-hour label   |
| Maximum size           | 9' x 4'<br>(2743 mm x 1219 mm)  |
| Curtain                | Interlocking 22-gauge stainless steel slats (660 Series)<br>Interlocking 22-gauge galvanized steel slats (661/662 Series) |
| Integral frames/guides | No. 4 finish stainless steel (660/662 Series)<br>16-gauge primed steel (661 Series)                                       |
| Sill                   | 14-gauge steel or stainless steel completely enclosed with fireproof acoustic filler                                      |
| Hood                   | No. 4 finish stainless steel (660/662 Series)<br>Primed steel (661 Series)  |
| Operation              | Push-up   |
| Mounting               | Between jambs   |
| Locking mechanism      | Interior slide bolts  |

### Options

- Fire Sentinel™ time-delay release device (see page 18 and 19)
- Photoelectric or ionization-type smoke detectors
- Locking mechanisms: Cylinder locking bottom bar with mortise cylinders

### Slat Data



| Series | Slat | Opening Width       | Slat     | Frame            |
|--------|------|---------------------|----------|------------------|
| 660    | F138 | Thru 9'0" (2743 mm) | 22 ga.ss | stainless steel  |
| 661    | F138 | Thru 9'0" (2743 mm) | 22 ga.   | galvanized steel |
| 662    | F138 | Thru 9'0" (2743 mm) | 22 ga.   | stainless steel  |

Slats are galvanized and painted or stainless steel (ss).

The 660/661/662 Series integral frame counter fire doors provide a handsome finished appearance for a variety of applications, including food service counters. Available for opening sizes up to 9' x 4' (2743 mm x 1219 mm), these doors carry a UL 1 1/2-hour Class B label and are factory assembled as a complete unit with fully welded frames. The frame comprises 16-gauge jambs and header, and is complemented by a 14-gauge sill, plus hood and fascia. Added protection features, such as Fire Sentinel™ are available as options.

| Door Selection Chart |                  |                  |                 |
|----------------------|------------------|------------------|-----------------|
|                      | Frame            | Curtain          | Sill            |
| Series 660           | Stainless steel  | Stainless steel  | Stainless steel |
| 661                  | Galvanized steel | Galvanized steel | Stainless steel |
| 662                  | Stainless steel  | Galvanized steel | Stainless steel |

### ARCHITECTURAL SPECIFICATIONS\* 660 661 662

#### PART 1 GENERAL

##### 1.01 Work Included

The doors will be Series 660, 661 or 662 as manufactured by Overhead Door Corporation.

##### 1.02 Related Work

Opening preparation, miscellaneous or structural metal work, access panels, finish or field painting are in the Scope of Work of other divisions or trades.

#### PART 2 PRODUCT

##### 2.01 Curtains

###### 660 Series

Curtain will be interlocking 22 gauge, No.4 finish stainless steel gauge slats, with endlocks for curtain alignment.

###### 661/662 Series

Curtain will be interlocking 22 gauge galvanized steel with bonderizing, 0.2 mils thick baked on gray enamel paint and 0.6 mils thick baked-on polyester top coat.

##### 2.02 Integral Frame and Guides

Integral frame and guides will be 16 gauge, primed steel (661 Series) or No.4 finish stainless steel (660/662 Series). (Optional frames available for new construction or for retrofit to existing openings. Retrofit frame only available with masonry wall.

**2.03 Sill**

Sill will be 14 gauge steel or stainless steel completely enclosed with fireproof acoustic filler.

**2.04 Bottom Bar**

Bottom bar will be 10 gauge stainless steel (660/662 Series) or primed steel angle (661 Series) with slide bolts and lift handles.

**2.05 Brackets**

Brackets will be 11 gauge steel.

**2.06 Counterbalance**

Counterbalance will be adjustable, helical torsion spring type, housed in a steel tube or pipe barrel with deflection limited to 0.03" (.76 mm) per foot of span.

**2.07 Hood**

Hood will be No. 4 finish stainless steel (660/662 Series) or primed steel (661 Series).

**2.08 Finish**

Steel slats and hood will be galvanized in accordance with ASTM A 635 and receive rust-inhibitive, roll coating process, including 0.2 mils thick prime paint, and 0.6 mils thick polyester top coat. Non-galvanized exposed ferrous surfaces shall receive one coat of rust-inhibitive primer. Galvanized steel will be primed and stainless steel with receive No 4 finish.

**2.09 Operation**

Operation will be manual push up.

**2.10 Locking**

Locking will be by interior slide bolts. (Optional under locks)

**2.11 Wall Mounting Condition**

Mounting will be between jambs.

**2.12 Label**

Provide counter fire doors certified with the UL 1 1/2 Hour Listing for masonry and non-masonry fire walls.

**PART 3 EXECUTION****3.10 Installation**

Install the door in accordance with Overhead Door Corporation instructions and standards using an authorized Overhead Door Corporation Distributor or representative. Install Rolling Fire Doors in compliance with the requirements of NFPA 80.

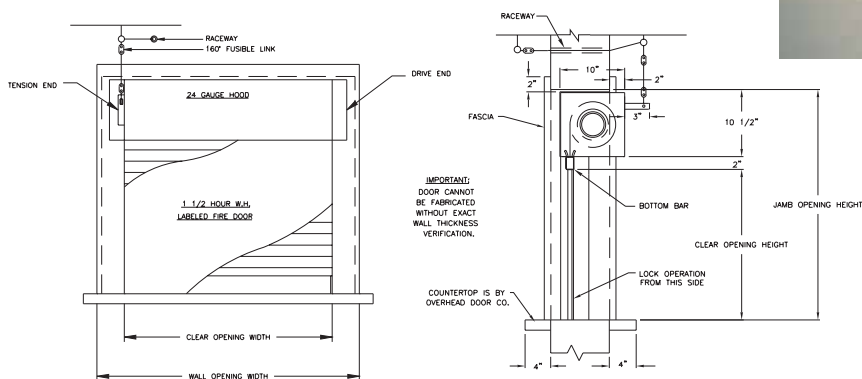
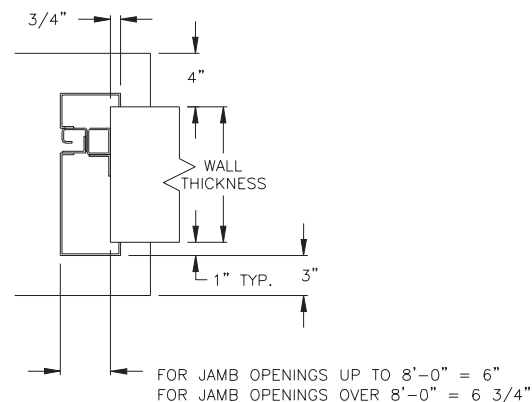
**3.02 Testing**

Test fire-release system and reset components after testing. Instruct owner's personnel in proper operating procedures and maintenance schedules.

*\*Note to specifiers: Words in parentheses indicate frequently specified and highly recommended options.*

**Door Clearance Elevations**

Operation: push-up.

**Wood Stud, Steel Stud or Masonry Jamb**

The Fire Sentinel is a UL-listed, fail-safe, time-delay door release device that controls a fire-door's closure in an emergency situation. The vibration-resistant unit controls the door with two time delays. The first is a 10-second delay after an alarmed event, such as a smoke detector or fire panel signal. The other is a 10-second delay (30-second optional, or customizable to any number of seconds) after a power loss.

The device's single closure design eliminates separate wiring from time-delay to optional equipment, while innovative engineering affords easy and convenient resetting. A variety of Fire Sentinel models and a number of optional features permit customization of any fire-rated door to the level of protection required for your specific application.

## Model FS-A

Model FS-A provides basic fail-safe protection, providing a 10-second delay on the alarm signal and another 10-second delay (adjustable to 30-second) on power loss before automatic door closure.

## Model FS-B

Model FS-B offers all of the feature of Model FS-A, as well as an "intelligent operation" feature that prevents the door release mechanism from activating on alarm when the door is already closed, eliminating time-consuming resets and preventing potential damage to the door release mechanism. (Requires additional proximity switch on non-motorized doors.) In addition, the FS-B can be used to activate sounder/strobes. Models A & B are World Power Series (WPS) and can accomodate 24V AC, 24V DC, or 120V AC without modification.

## Model FS-B2

Model FS-B2 provides the same features as the Model FS-B. In addition, optional sounder/strobe alarms and voice enunciator can be powered and activated by a the units battery backup.

This backup provides 12V DC power for the Fire Sentinel and up to four smoke detectors for a maximum of 72 hours during a sustained power loss.

## Model FS-B2 Master/Slave Combination

The Model FS-B2 Master/Slave combination unit encompasses all the features of the Model FS-B2. In addition, it allows "remote release" of up to four doors total from a single command unit. The FS-B2 unit provides economical fail-safe fire protection in applications with multiple fire doors. (Available with optional enunciators.)

## Model FS-C

Model FS-C includes all the features of Model FS-B, including a 72-hour battery backup that provides power for the unit and up to four smoke detectors. The unit requires an electric operator to close the door with motor power on alarm. A sensing edge, which is required with this unit, reverses the direction of a closing motor-operated door upon contact with an obstruction. The closing cycle will repeat three times (or up to ten cycles by specification), at which point the auto-close mechanism will activate and the door releases from the motor and drops by gravity to rest upon the obstruction.

The design of the Model FS-C simplifies testing and resets. When the door has closed on alarm through motor operation, or the test mode is activated, the fire door can be reset by clearing the alarm and pushing the "open" button. In addition to high intensity strobe/sound alarms, Model FS-C can be equipped optionally with multilingual voice enunciators. An uninterruptible power supply option that allows door closure by a central fire-control system or by smoke detectors adjacent to the opening is additionally available.

## Model FS-C+

Model FS-C+ incorporates the same features and options as the Model FS-C. In addition, if an obstruction is encountered during an alarmed event, the FS-C+ allows the door to rest on the obstruction rather than automatically releasing after cycling. If the door is closed on an obstruction and the alarm is cleared, the door will reopen and reset automatically.

| Mechanical Specifications      |                         |                                      |                                  |             |       |             |
|--------------------------------|-------------------------|--------------------------------------|----------------------------------|-------------|-------|-------------|
| Mechanical (Inside Dimensions) |                         | Current Requirements                 | Supervisory                      |             | Alarm |             |
| Model A & B                    | Model B2 & C & C+       |                                      | A & B                            | B2 & C & C+ | A & B | B2 & C & C+ |
| Width: 7 1/2" (191 mm)         | Width: 9 1/8" (232 mm)  | 24v DC                               | .050A                            | .100A       | .075A | .500A       |
| Height: 8" (203 mm)            | Height: 9 1/8" (232 mm) | 24v AC                               | .100A                            | .100A       | .075A | .500A       |
| Depth: 4" (102 mm)             | Depth: 4 3/4" (121 mm)  | 120v AC                              | .50A                             | .100A       | .075A | .500A       |
| Slave                          |                         | N.O./N.C. Relay Limits               | Light & Strobe                   |             |       |             |
| Width: 4 1/16" (103 mm)        |                         | 2A/30vDC 60 Watt                     | 1.5 Candle (12,000 candle power) |             |       |             |
| Height: 6" (152 mm)            |                         | 103 db@ 10ft (continuous)            |                                  |             |       |             |
| Depth: 3 1/8" (78 mm)          |                         | 100 Candle (Optional ADA enunciator) |                                  |             |       |             |

Hold and release rating: 40 lbs. (18 kg)

Note: Our Fire Sentinels meet all latest UL 864 requirements, Canadian UL/New York MOA





### Fire Sentinel Model Features

| Design Features                       | A | B | B2 | FS Models<br>B2<br>Master/Slave | C | C+ | Benefits   |
|---------------------------------------|---|---|----|---------------------------------|---|----|--|
|                                       |   |   |    |                                 |   |    |  |
| Fail-Safe Design                      | • | • | •  | •                               | • | •  | Meets UL, CUL and CSFM requirements  |
| Adjustable Power Loss Time Delay      | • | • | •  | •                               | • | •  | Allows time for back-up power to come on-line                                |
| Adjustable Alarm Time Delay           | • | • | •  | •                               | • | •  | 0 — 10 seconds as allowed by (AHJ) Authority Having Jurisdiction             |
| "Intelligent Operation"               |   |   | •  | •                               | • | •  | Avoids unnecessary resetting   |
| Aux. Relay Output                     |   | • | •  | •                               | • | •  | Can be used to activate additional devices (Horn, Panel lights, etc.)        |
| Aux. 12v DC Output                    |   |   | •  | •                               | • | •  | Can be used to activate and power additional devices                         |
| 72 Hour Internal Battery with Charger |   |   | •  | •                               | • | •  | Backs up power to avoid automatic closure during power failures              |
| Audible/Visual Enunciator Compatible  |   |   | o  | o                               | • | •  | Sounder/Strobe warning before door closure                                   |
| Voice Module Compatible               |   |   | o  | o                               | • | •  | Spoken warning before door closure   |
| Fail to Close Safety Timer            |   |   | o  | o                               | • | •  | Additional assurance of full closure   |
| Remote Test                           |   |   | o  | o                               | • | •  | Test door conveniently anytime   |
| Door Obstruction Counter              |   |   |    |                                 | • | •  | Assurance of closure even with obstruction                                   |
| Stop on Obstruction                   |   |   |    |                                 |   | •  | Allows additional opportunity to exit, resets from obstruction automatically |

• = Standard o = Optional

Note: Model FS-C can be used a self-supported system in application where a central alarm is not present.

## ARCHITECTURAL SPECIFICATIONS\*

### PART 1 GENERAL

**1.01** The time delay release device for the fire doors shall be Overhead Door Corporation's Fire Sentinel (Model FS-A) (Model FS-B) (Model FS-B2) (Model FS-C).

**1.02** Wiring and field connection of the Fire Sentinel shall be by the electrical contractor in accordance with the wiring diagrams, details, and installation instructions of Overhead Door Corporation.

Note for specifier:

For Model FS-A, use 2.01 through 2.03

For Model FS-B, use 2.01 through 2.05

For Model FS-B2, use 2.01 through 2.06

For Model FS-C, use 2.01 through 2.09

### PART 2 PRODUCT

**2.01** Fire Sentinel shall be Model FS-\_\_\_, to provide a 10-second delay on alarm signal and a 10-second delay on power loss to activate the door closure.

**2.02** The hold/release rating of the unit shall be 40 pounds (18 kg).

**2.03** The unit shall be fused and transient protected to guard against power surges.

**2.04** The hold open/release device shall recognize that the fire door is in the closed position, and where motor operated, be able to sense there is power to the motor. The unit may be wired to close on alarm.

**2.05** Optional audible and visual alarm indicators shall operate during the closing cycle.

**2.06** A 72 hour battery back up shall be provided to support alarm logic, smoke detector, release capability and enunciator outputs. (FS-B2, B2 Master/Slaver, C, C+).

**2.07** Sounder/strobe unit shall be provided and operable during the closing cycle. (Optional voice enunciator shall be provided with \_\_\_\_\_ language.)

**2.08** A bottom bar sensing edge shall be furnished. Upon contact with an obstruction, the door will reverse and repeat the close attempt three times. Failure to reach the closed position will activate the door auto-close mechanism, and the door will rest on the obstruction until it is removed. The audible and visual warning indicators will continue to operate until the door achieves full closure.

**2.09** Unit shall be supplied with a test panel.

### PART 3 EXECUTION

**3.01** The Fire Sentinel shall be installed and tested in accordance with Overhead Door Corporation instructions and in compliance with all applicable state, county, district, or local building and fire standards.

Note: If a local code requires delay on alarm to be less than 10 seconds, or a 30-second delay on power loss, you should state the requirement upon ordering the Fire Sentinel. The change will be made at the factory. Adjustments made by other than factory-trained personnel may void the warranty.

\*Note to specifiers: Words in parentheses indicate frequently specified and highly recommended options.

## Operator Control Options


- Fire Sentinel™ fail-safe, time-delay release device
- Entrapment protection: electric sensing edge, pneumatic sensing edge, or photoelectric sensors
- Ground-level chain hoists for emergency or hand operation (standard on Model RDB+; optional on Model RG+; not available on Model CDO)
- Push-button, key or combination stations; surface- or flush-mounted for interior and/or exterior locations

## Recommended Safety Features

### Fire Sentinel™

Fire Sentinel™ is highly recommended for all fire doors. This fail-safe time-delay door release device provides a 10-second time delay at the initiation of a detector/alarm input, and an independent 10-second (30-second optional) delay on power loss. When used in conjunction with an electric operator, it also facilitates easy test and reset capabilities for fire doors. For more information on Fire Sentinel™, refer to pages 18 and 19.

## Electric Operator Selection Guide

|  | Horsepower       | Counter Door* | Rolling Door* | Helical Gear | 6-rib poly J-belt | Worm gear | Adjustable clutch | Totally enclosed | Continuous duty | Explosion proof | Mounting type |
|---|------------------|---------------|---------------|--------------|-------------------|-----------|-------------------|------------------|-----------------|-----------------|---------------|
| <b>Model CDO</b>  | 1/2 HP           | 140 (13006)   | N/A           | ●            |                   |           |                   | ●                |                 |                 | F             |
| <b>Model RG+</b>  | 1/3, 1/2, 3/4 HP | N/A           | 325 (30193)   |              | ●                 |           | ●                 | ●                | ●               | ●               | F,W,T         |
| <b>Model RDB+</b>   | 1/2, 1, 2 HP     | N/A           | 860 (79897)   |              |                   | ●         | ●                 | ●                | ●               | ●               | F,W,T         |

Mounting Options: F = Front of Hood, W = Wall, T = Top of Hood

\* Maximum area in square feet (square millimeters).

## Entrapment Protection

The installation of an external reversing device for all electrically operated commercial doors is recommended. If a sensing edge or other reversing device is not installed, a constant-contact control switch must be used to close the door. We recommend a four-wire, fail-safe electric sensing edge that will not allow the door to close if the sensing edge is damaged or not working properly.

Overhead Door Corporation offers the broadest line of electric operators to suit new construction and retrofit applications, as well as unusual or special requirements. Manufactured by Overhead Door Corporation to meet the exacting performance requirements of Overhead Door's upward-acting doors, our ribbon branded operators afford precise control of door action for years of trouble-free operation.

In order to improve safety and enhance door and motor life, industry quality assurance guidelines recommend the choice of a single manufacturer for both door and operator applications. Overhead Door Corporation is the only national manufacturer of a full line of commercial and industrial doors and operators specifically designed for integral applications.

## Operator Models

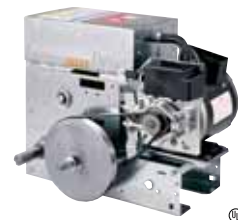
### Model CDO

Model CDO is a gear-reduced commercial operator with a 1/2 HP motor. The CDO operator may be used with all 640/641 Series doors. Mounting is front-of-hood only.



### Model RG+

Model RG is a heavy-duty belt-driven commercial operator designed for use with 630, 631, and 634 Series doors up to 325 sq. ft. (30193 sq.mm). It is available with a 1/3 HP, 1/2 HP or 3/4 HP motor. Ground-level chain hoists for emergency or hand operation are optional (but not available for left-handed, bench-mounted operators). Mounting options include front-of-hood, top-of-hood or wall mounted.



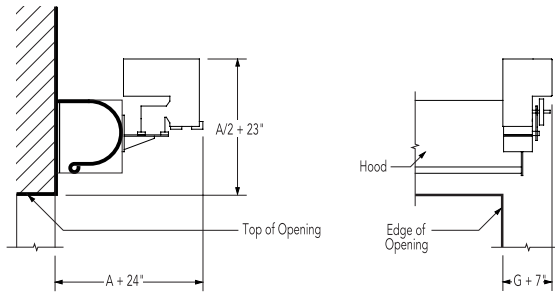
### Model RDB+

Model RDB is a heavy-duty, gear-reduced commercial operator designed for use with fire doors up to 860 sq. ft. (79897 sq.mm). Ground-level chain hoists for emergency or hand operation are standard. It is available with a 1/2 HP, 1 HP or 2 HP motor. Mounting options include front-of-hood, top-of-hood, or wall mounted.

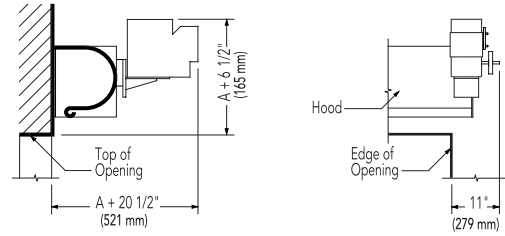


## Mounting Details

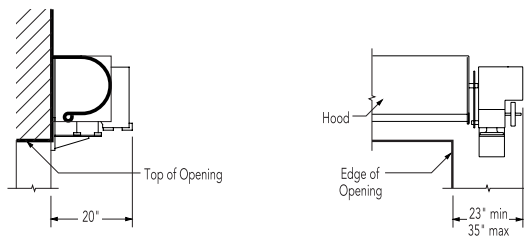
**Front-of-Hood Mounted-RDB+**



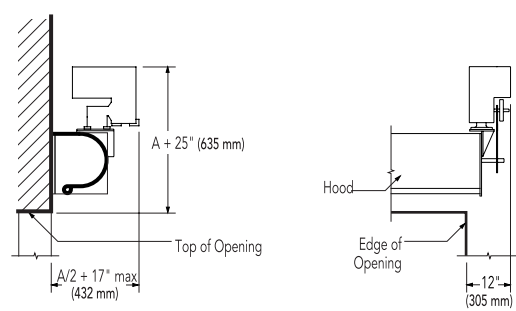
**Front-of-Hood Mounted\*-RG+**



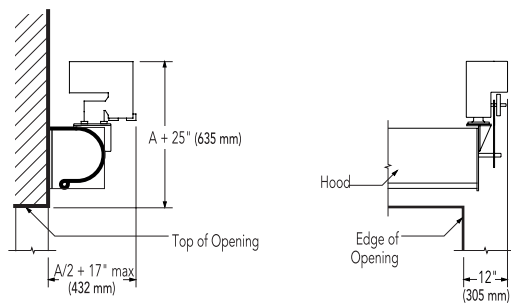
**Wall Mounted (Below Shaft)-RDB+**



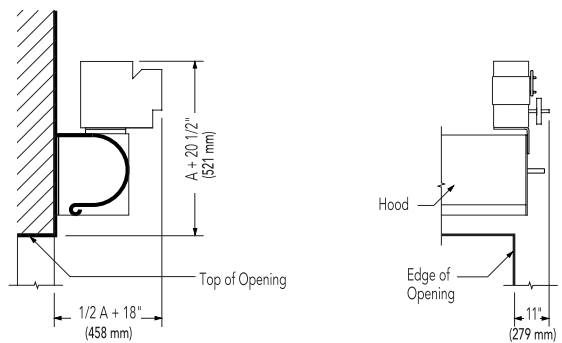
**Top-of-Hood Mounted-RG+**



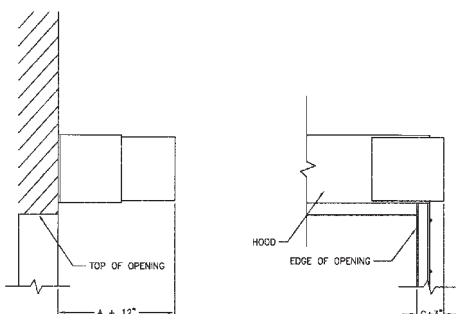
**Top-of-Hood Mounted -RDB+**



**Top-of-Hood Mounted-RG+**



**Front-of-Hood Mounted\*-CDO**



Note: For "A" and "G" dimensions, refer to Headroom and Guide Clearance Dimension charts applicable to door type selected.

\* Front-of-Hood mounted also available on between jambs mounted doors.

For more detailed information, refer to the Overhead Door Corporation's Architectural Design Manual, or consult your local Overhead Door Distributor.



---

## The Original, Innovative Choice for Unequalled Quality and Service

---

Overhead Door Corporation pioneered the upward-acting door industry, inventing the first upward-acting door in 1921 and the first electric door operator in 1926. Today, we continue to be the industry leader through the strength of our product innovation, superior craftsmanship and outstanding customer support, underscoring a legacy of quality, expertise and integrity. That's why design and construction professionals specify Overhead Door Corporation products more often than any other brand.

The red Overhead Door Ribbon is a mark of quality that also reflects the pride we take in the people who support our products. Our family of 400 Ribbon distributors across the country not only share our name and logo, but also our commitment to excellence. Your Ribbon distributor will work with you in a consultative role to ensure that product selections achieve your design and application requirements — in addition to providing expert installation, professional field service and ongoing maintenance. From project design and manufacturing to installation and service, the Overhead Door Ribbon is your guarantee of genuine quality and turnkey service excellence.

Together with our Ribbon distributors, we offer comprehensive technical information and resource materials to support your project, including:

- Architectural Design Manual – a comprehensive guide to selecting, specifying and detailing all commercial and industrial Overhead Door products
- Sweet's Catalog for selection information about our products, and Sweet's CD and CD-CAD for convenient electronic product information, technical specifications, and details with CAD "cut-and-paste" capability
- Operation & Maintenance Manual – detailed product information, customized for your project, to ensure reliable, long-life door system operation
- Custom design and technical assistance through our Corporate Application Engineering Teams



JetRoll® High Speed Doors



Thermacore® Sectional Doors



Rolling & Side Folding  
Security Grilles & Closures



Rolling Service Doors

Today, Overhead Door Corporation — as well as its divisions, which include W.B. McGuire Co. for loading dock equipment and impact traffic doors, and Horton Automatics for automated pedestrian entrances — is recognized as the leading, single-source manufacturer of integrated door and operator systems for commercial, industrial and residential applications. With multiple manufacturing locations throughout the United States, a state-of-the-art International Technical Center for design and engineering, and a national network of authorized Ribbon distributors, our capabilities are leading-edge and our field service and technical support second to none. Built best and backed best, Overhead Door is the industry's leading choice for quality that shows and lasts.

To talk with the Overhead Door Distributor nearest you, call 1-800-887-DOOR.

Overhead Door Corporation  
2501 S. State Hwy. 121  
Lewisville, Texas 75067  
(800) 275-3290 Telephone



INDUSTRY LEADING  
COMMERCIAL & INDUSTRIAL SOLUTIONS

©2006 Overhead Door Corporation  
Form #: C900-039 1M JAR 10/06

The Overhead Door Corporation family of quality commercial and industrial products includes:



A part of Sanwa Shutter Corporation

Consistent with our policy of continuing product improvement, we reserve the right to change product specifications without notice or obligation