

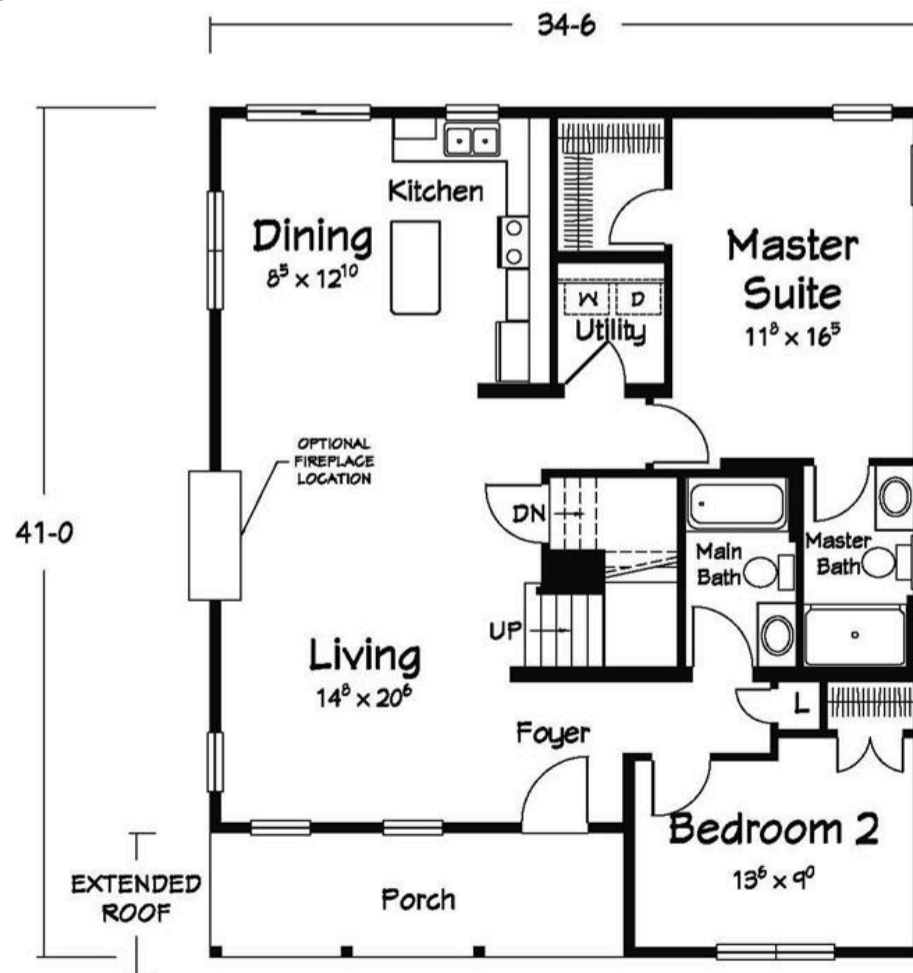
# Floor Plans

Select a Region

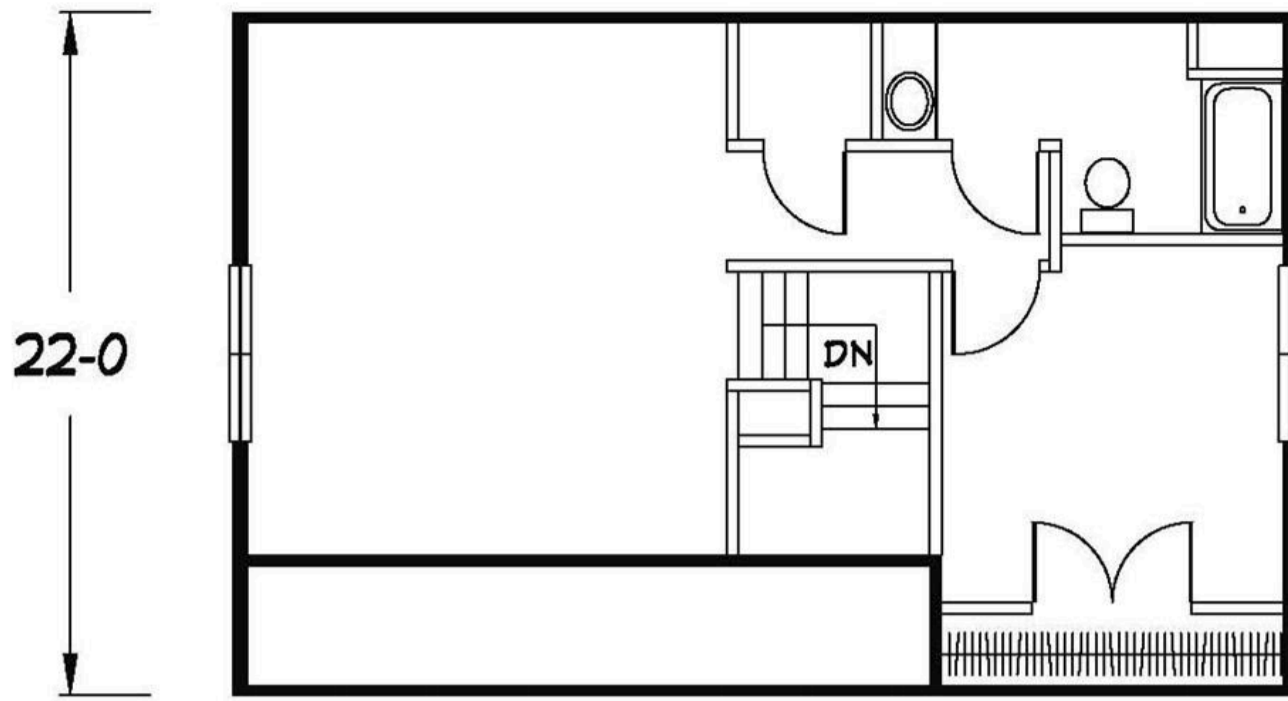
Current Region - Northeast

## Cozy Cabin ★

2 Beds	2 Baths	1297 Sq Ft	41' x 34'6" Size
-----------	------------	---------------	---------------------



**COZY CABIN  
PROPOSED UPPER LEVEL (TO BE SITE FINISHED)**



Click the image to zoom in.

**Part of the**

## Related Floor Plans

**Ritz-Craft Corporation**

Northeast Division: Mifflinburg, Pennsylvania | 800-326-9836

Midwest Division: Jonesville, Michigan | 877-878-4025

Artist renderings depict homes as they may be built on a typical site. Renderings may include optional and site-installed features. Be sure to thoroughly discuss all aspects of your building project with your Ritz-Craft homebuilder. Interior views may include optional features. Refer to standard specifications for included items. Based on vendor availability, all options portrayed on this site are subject to change without notification. Approved home builders are independent business entities and are not agents of Ritz-Craft. Due to occasional updating of building codes and Ritz-Craft's continuous product improvement, specifications are subject to change without prior notification. Be sure to request a copy of current specifications from your selected homebuilder. Home prices are determined by Ritz-Craft home builders, who quote all modular home costs. Custom modular home plans are also available.

© 2026 Ritz-Craft Corporation. All Rights Reserved.

Website by Mojo Active