

CEILING  
8'-0"  
FLOOR

CEILING  
8'-0"  
FLOOR



OPTIONAL PORCH

CEILING  
FLOOR

CEILING  
FLOOR

BUILDER		CUSTOMER	
CBS COASTAL	CITY	DAY DREAMER	STATE
CITY	COUNTY	COUNTY	STATE
WIND SPEED	MPH	VULT	SQ. FT.
???	???	???	???
ORDER NO.	SERIAL NO.	FILE NO.	
ORDER #	SERIAL #	DAY DREAMER	RENDERED

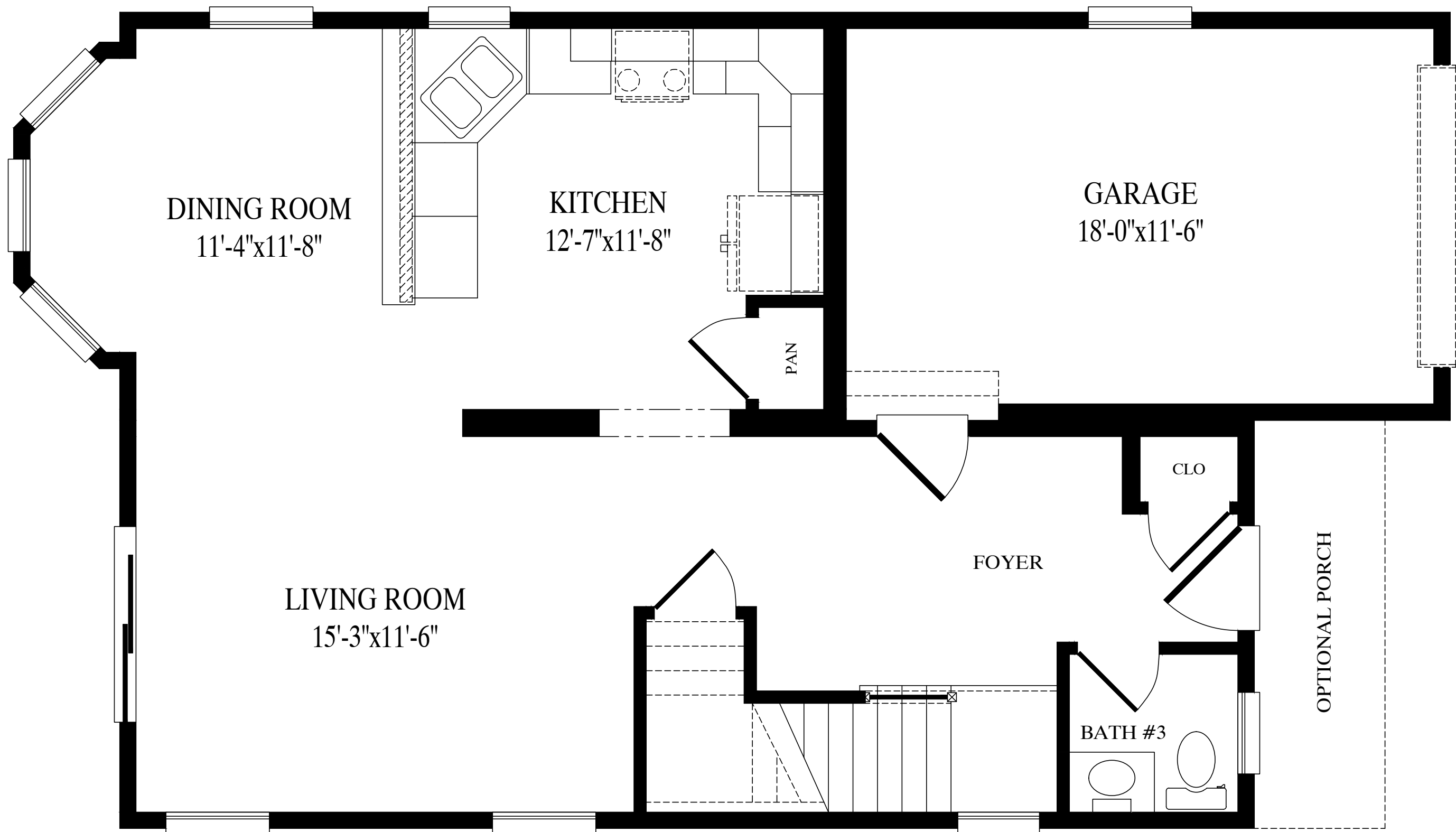
2544-TWO STORY  
FRONT ELEVATION




Custom Building Systems LLC  
 200 Custom Ave  
 Middleburg, PA 17842  
 (888) 553-1414  
 www.custombuildingsystems.net

DATE:	DRAWN BY:	STATUS:
00/00/00	INIT	STAT

GREGO 10/17/2025 7:52:01 AM



FRONT

OPTIONAL PORCH

DINING ROOM  
11'-4"x11'-8"

KITCHEN  
12'-7"x11'-8"

GARAGE  
18'-0"x11'-6"

LIVING ROOM  
15'-3"x11'-6"

PAN

FOYER

CLO

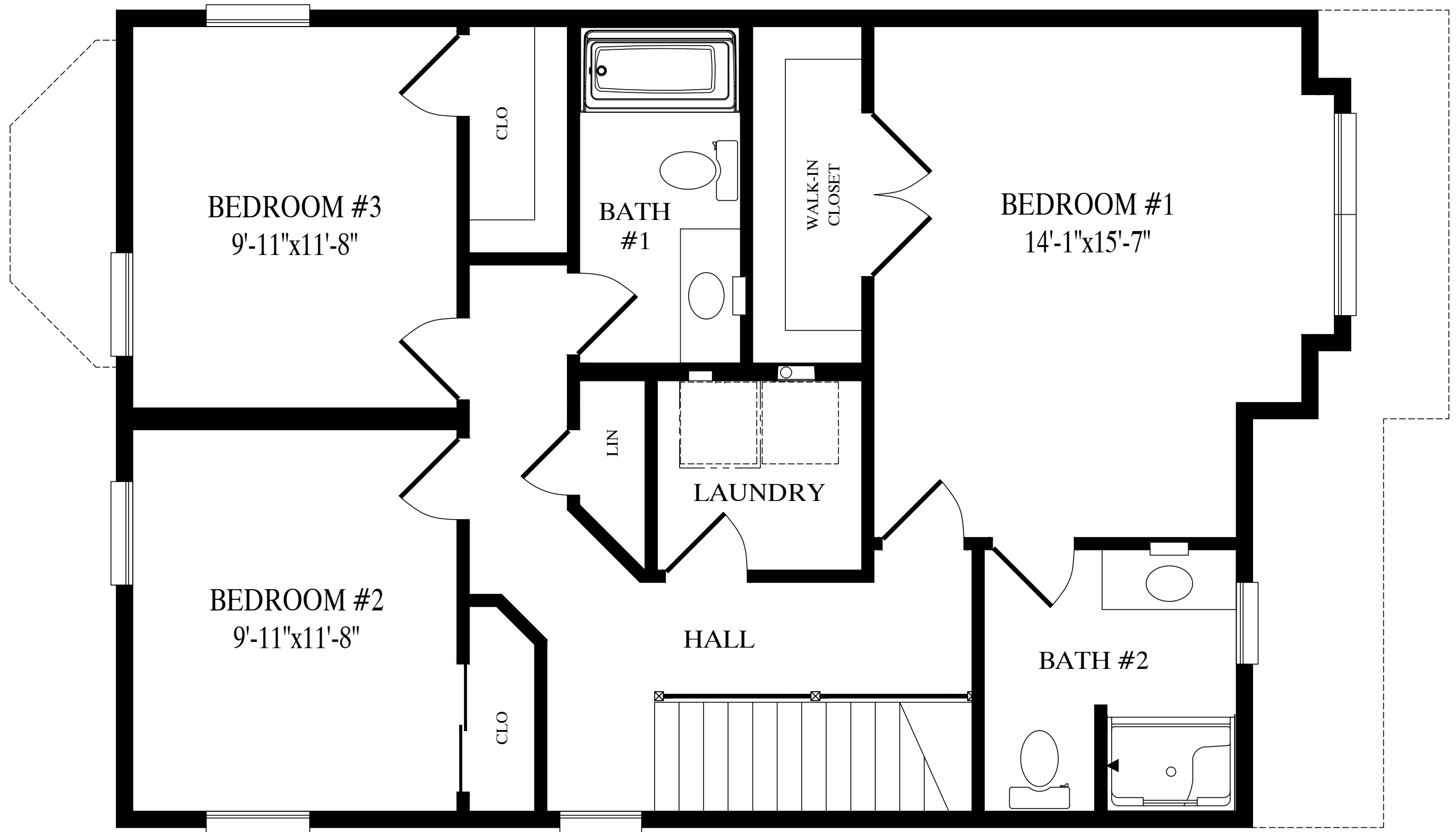
BATH #3

# Day Dreamer

25'-0" x 44' Two Story

969 sq. ft. first floor

1871 sq. ft. total



FRONT

902 sq. ft. second floor