

CEILING  
8'-0"  
FLOOR

CEILING  
8'-0"  
FLOOR



CEILING

FLOOR

CEILING

FLOOR

2830-2 STORY  
FRONT ELEVATION



DATE: 00/00/00

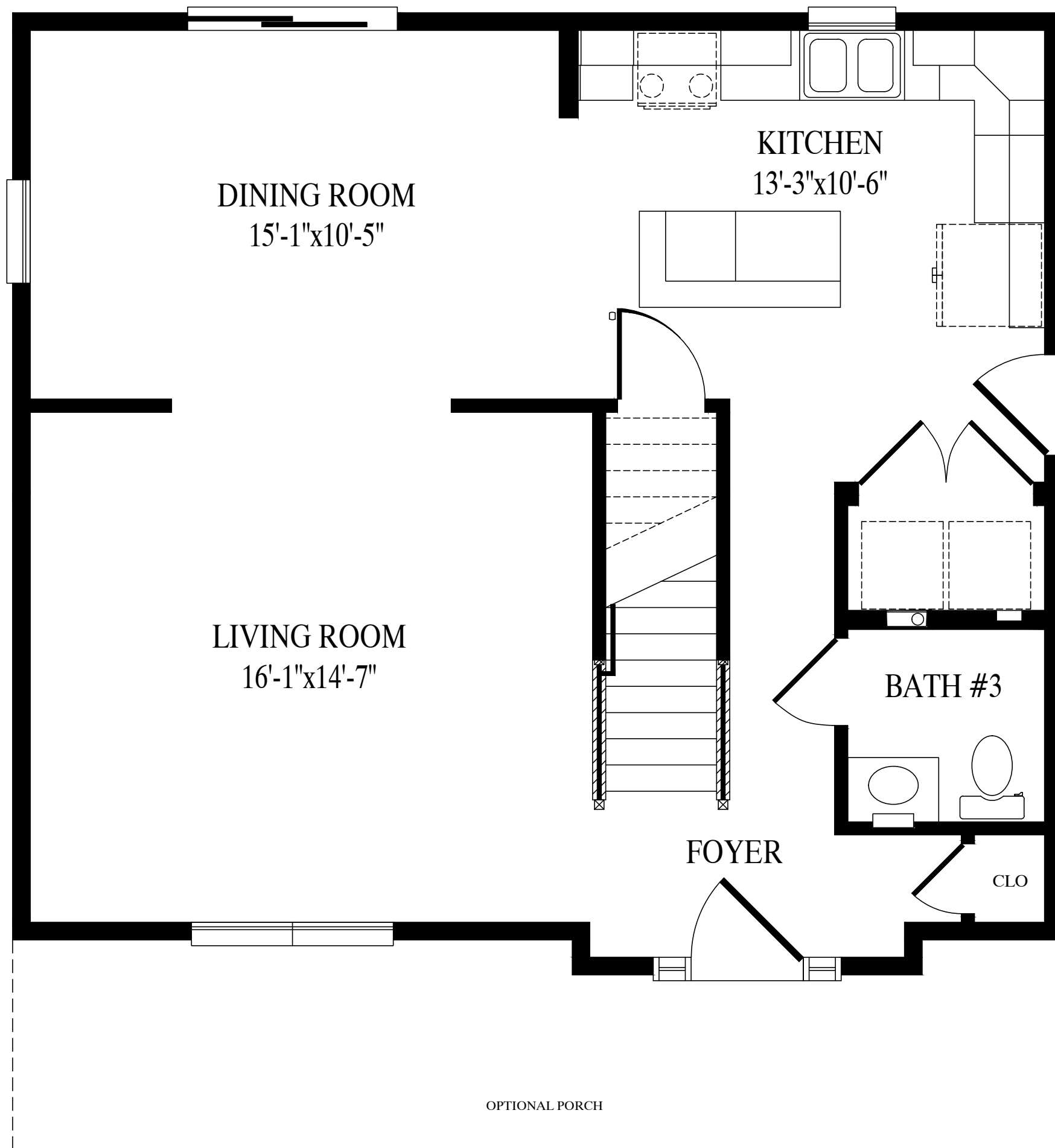
DRAWN BY: INIT

STATUS: STAT

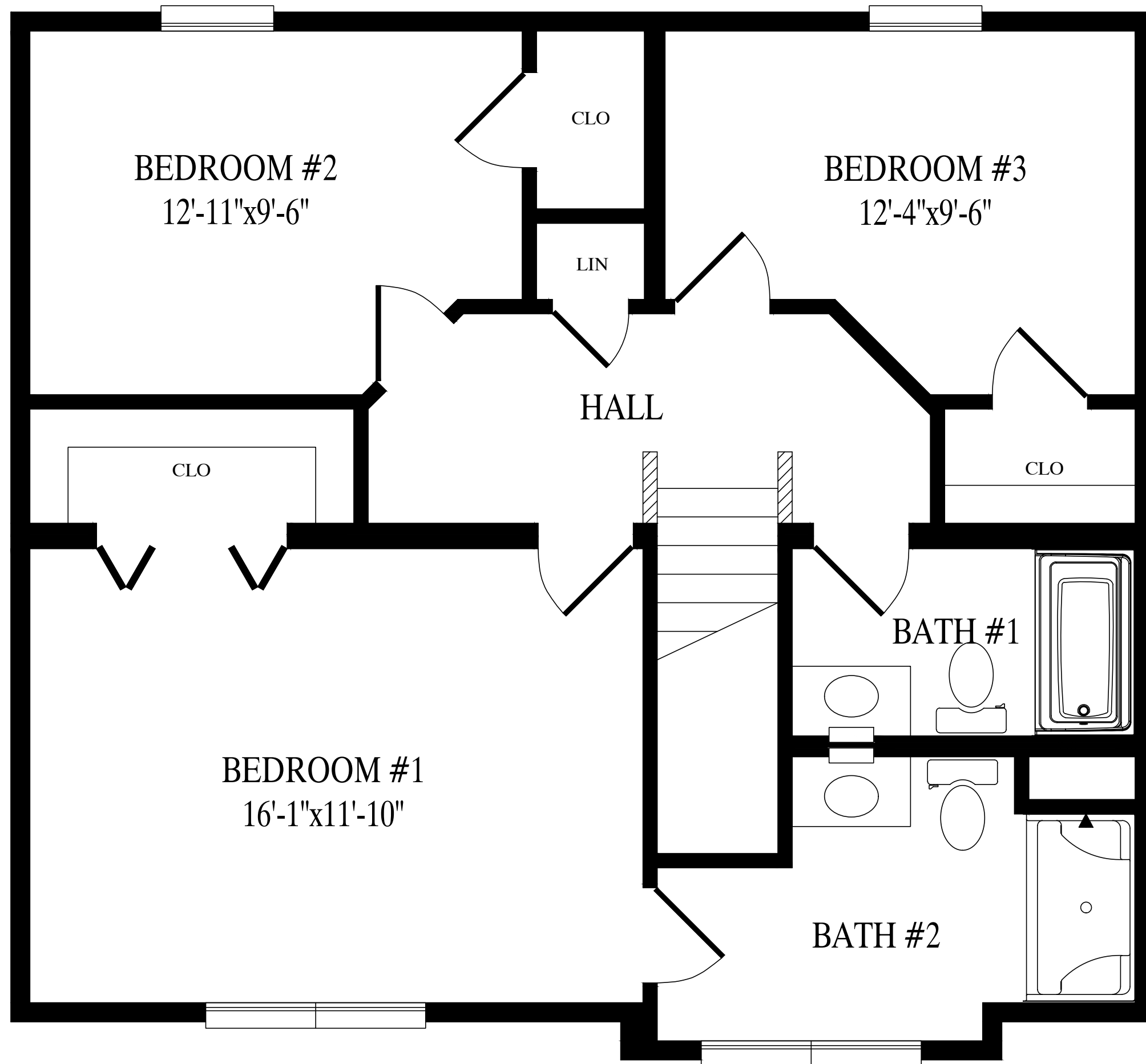
BUILDER	BROOK HAVEN	CUSTOMER	FAIR HAVEN
CITY	CITY	COUNTY	COUNTY
WIND SPEED	???	MPH	VULT
ORDER NO.	???	SERIAL NO.	???
ORDER #	???	SERIAL #	???
		SNOW LOAD	???
			SQ. FT.
		FILE NO.	FAIR HAVEN RENDERED

GREGO 11/6/2024 2:02:21 PM

ACTUAL HOUSE MAY VARY FROM ELEVATION-ACCESS TO GRADE ON-SITE BY OTHERS



**Fair Haven**  
27'-6" x 30' Two Story  
805 sq. ft. first floor  
1610 sq. ft. total



805 sq. ft. second floor