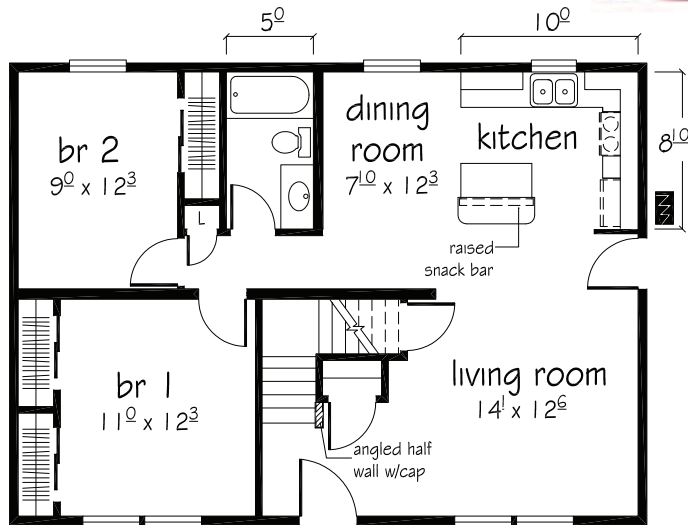


cape cod



www.simplexhomes.com

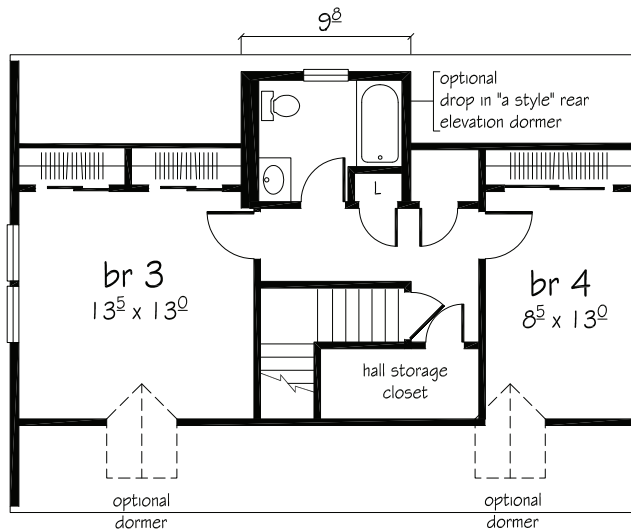
Mount Sterling I



Mount Sterling I
1st floor plan

26⁰ x 36⁰

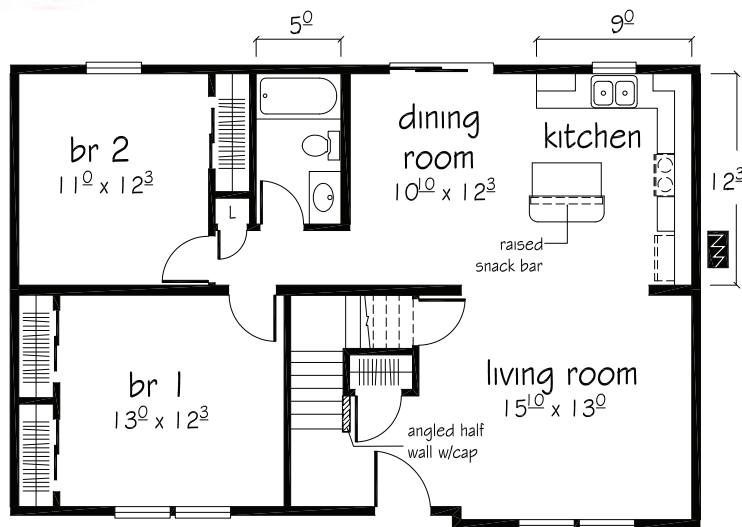
936 sq. ft.



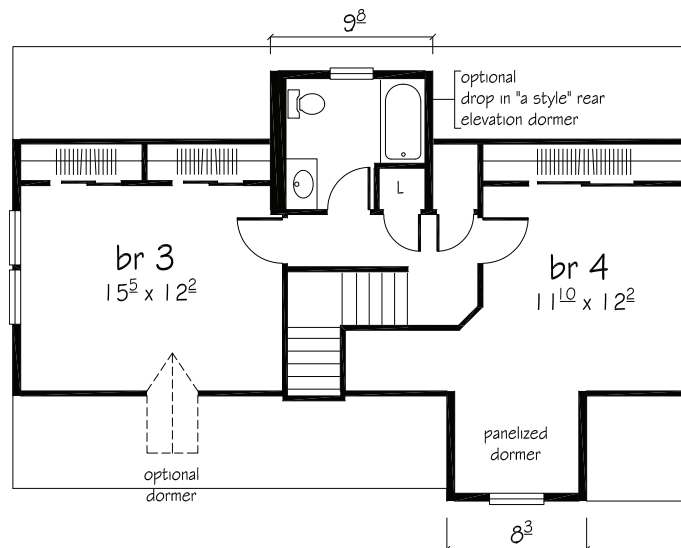
Mount Sterling I
Suggested 2nd floor plan

Unfinished 618 sq. ft.

Mount Sterling II

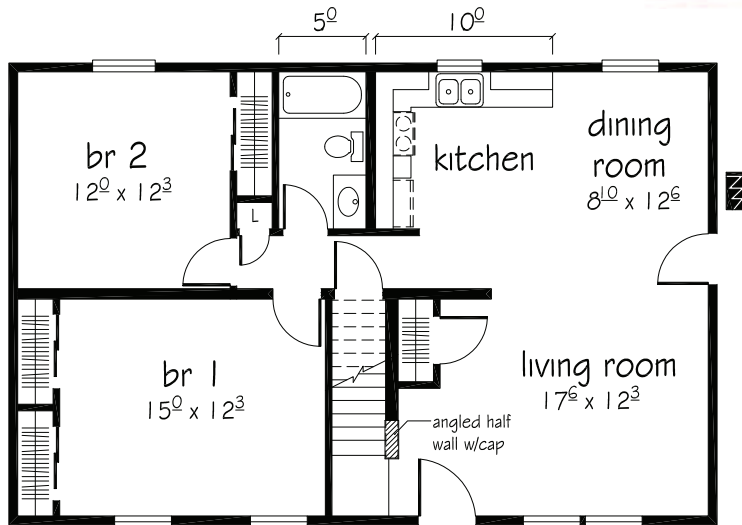


Mount Sterling II 1st floor plan 26⁰/26⁹ x 40⁰ 1054 sq. ft.



Mount Sterling II Suggested 2nd floor plan Unfinished 668 sq. ft.

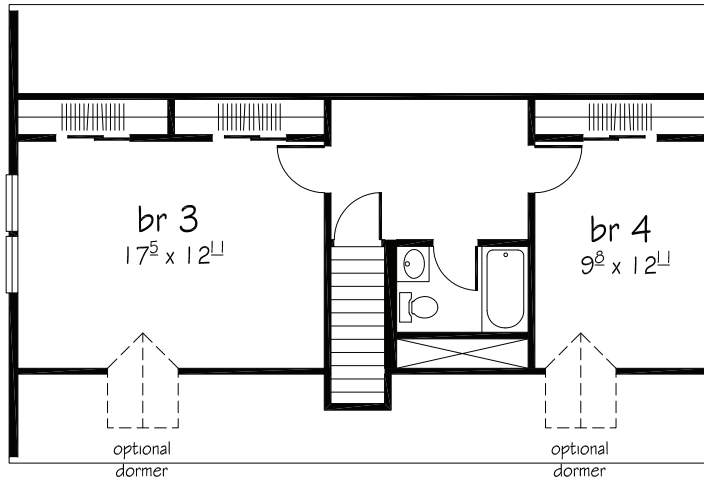
Mount
Kisco I



Mount Kisco I
1st floor plan

26⁰ x 40⁰

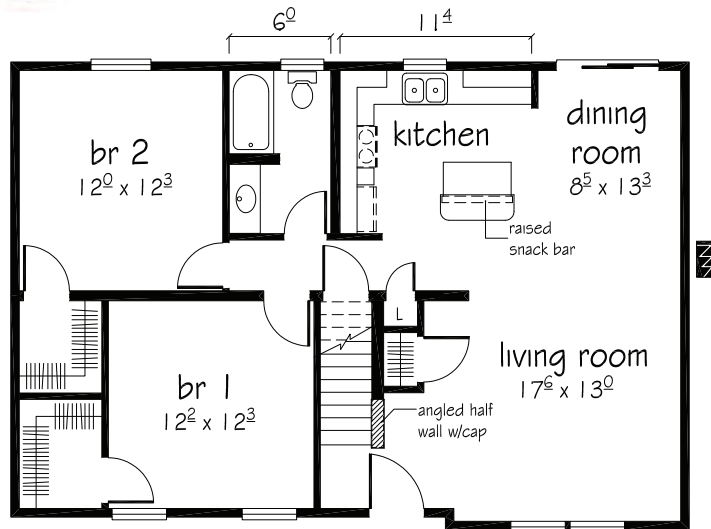
1040 sq. ft.



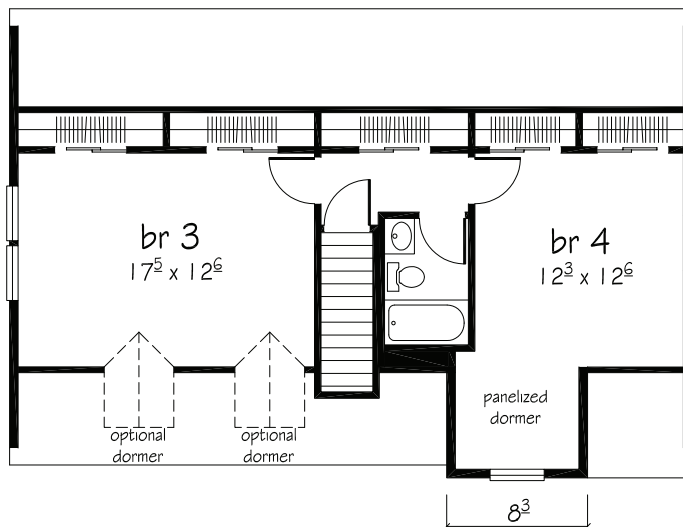
Mount Kisco I
2nd floor plan

637 sq. ft.

Mount Kisco II

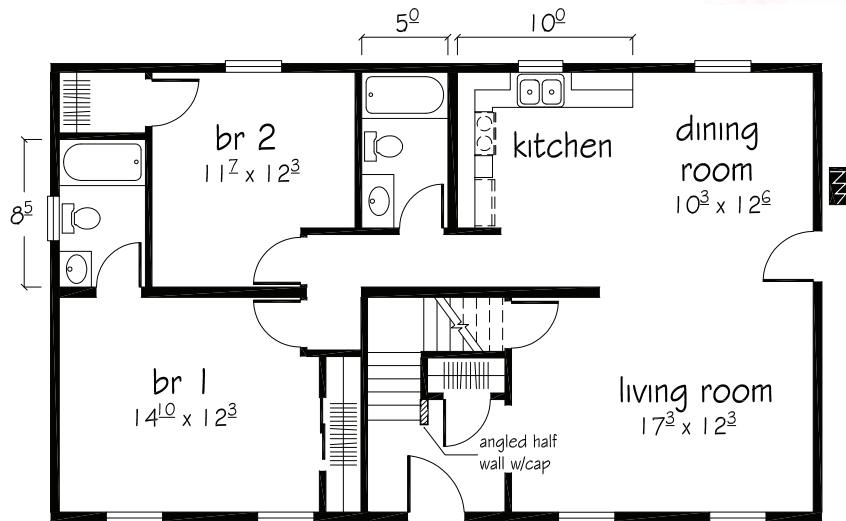


Mount Kisco II
1st floor plan 26⁹/₂₇⁶ x 40⁰ 1081 sq. ft.



Mount Kisco II
2nd floor plan 674 sq. ft.

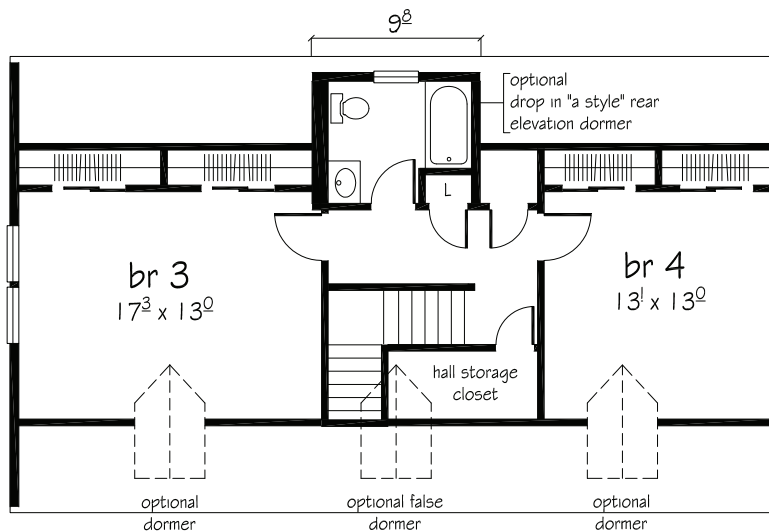
Mount
Vernon I



Mount Vernon I
1st floor plan

26'0" x 44'0"

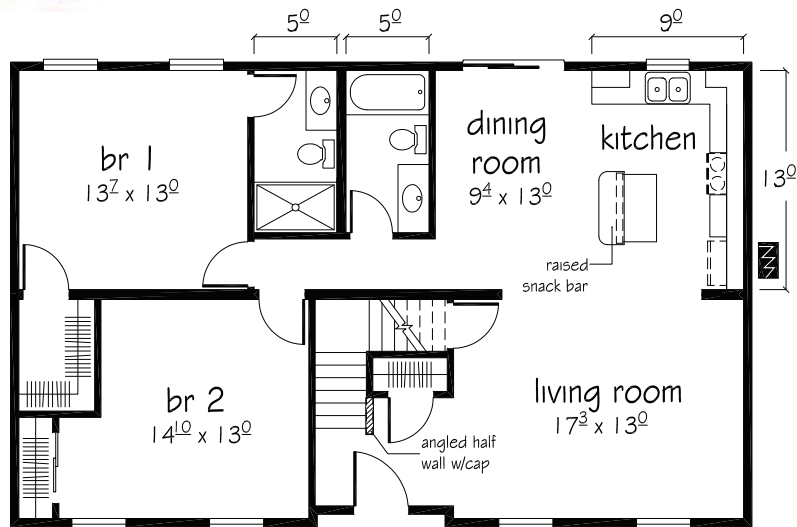
1144 sq. ft.



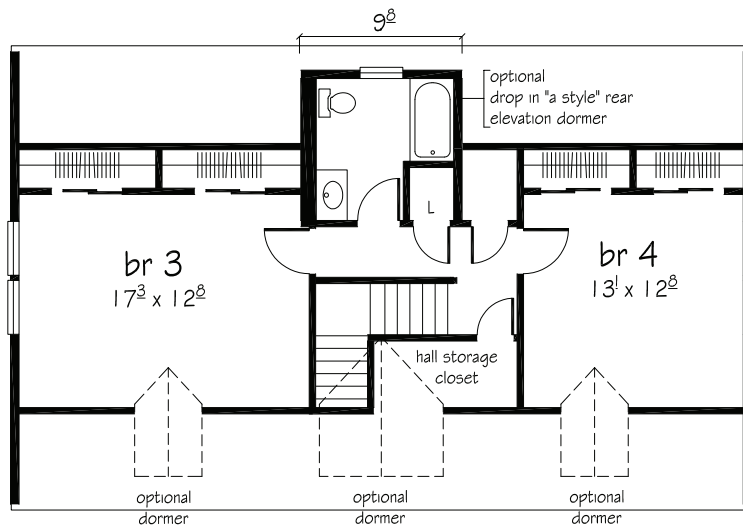
Mount Vernon I
Suggested 2nd floor plan

Unfinished 740 sq. ft.

Mount Vernon II

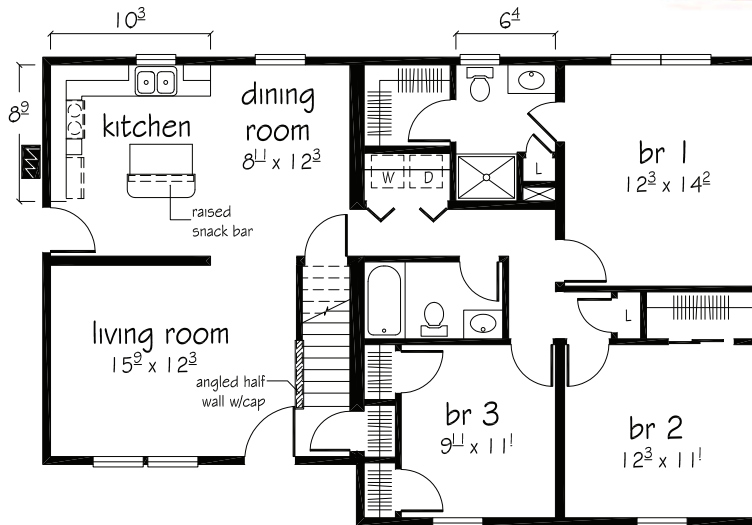


Mount Vernon II 1st floor plan **27⁶ x 44⁰** **1 208 sq. ft.**



Mount Vernon II Suggested 2nd floor plan **Unfinished 692 sq. ft.**

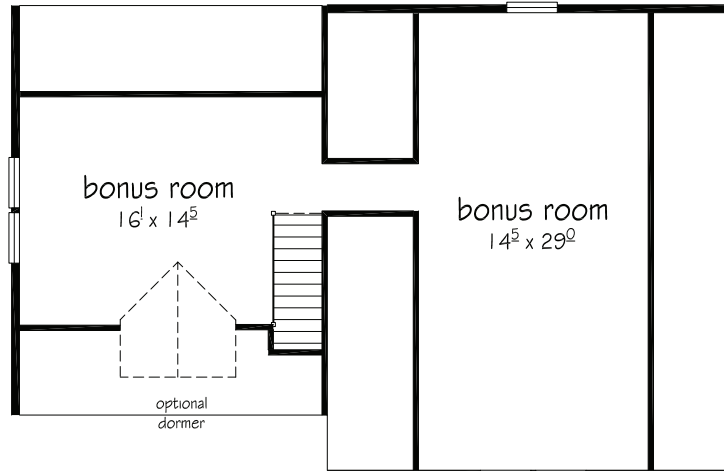
Mount
Washington



Mount Washington
1st floor plan

26⁰/30⁰ x 46⁰

1300 sq. ft.



Mount Washington
Suggested 2nd floor plan

Unfinished 712 sq. ft.