



two story



www.simplexhomes.com

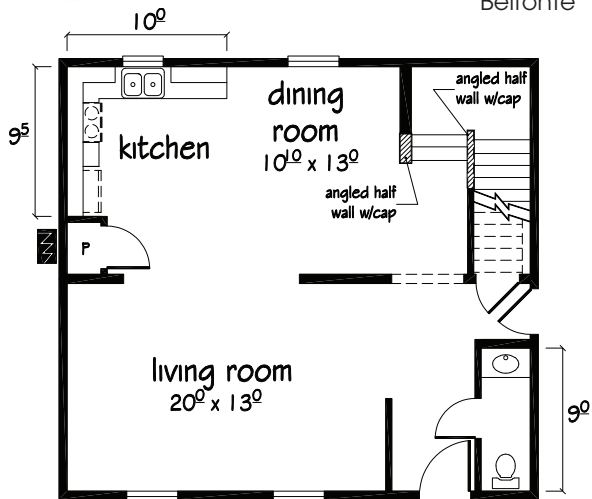
two story



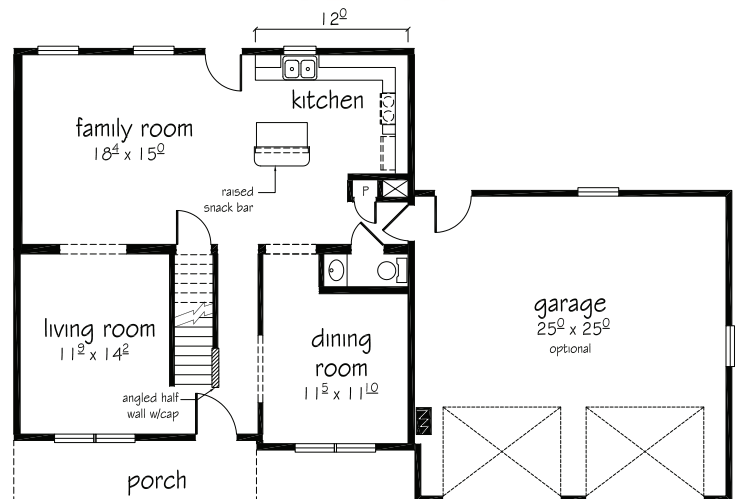
Belfonte



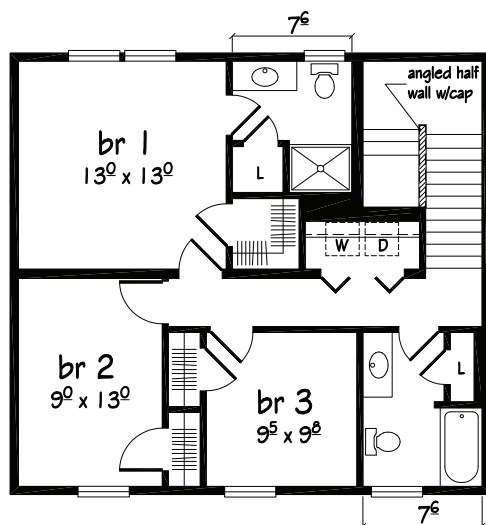
Yorktowne



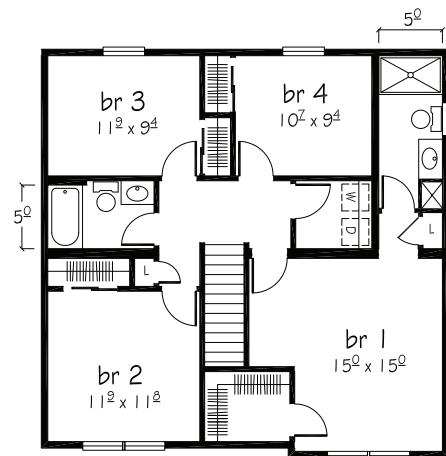
Belfonte 1st floor plan 27'6" x 30'0" 1650 sq. ft.



Yorktowne 1st floor plan 30'0" x 31'6"/31'6" 1960 sq. ft.



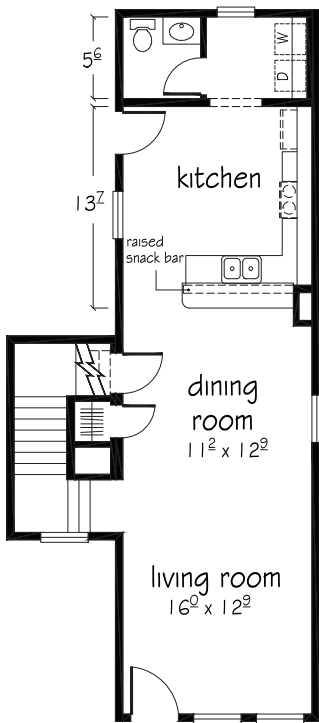
Belfonte 2nd floor plan



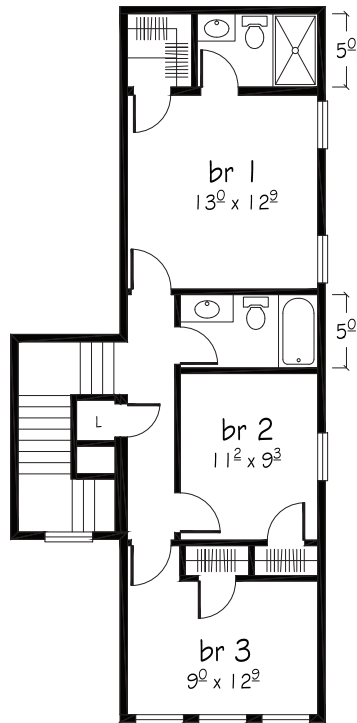
Yorktowne 2nd floor plan

two story

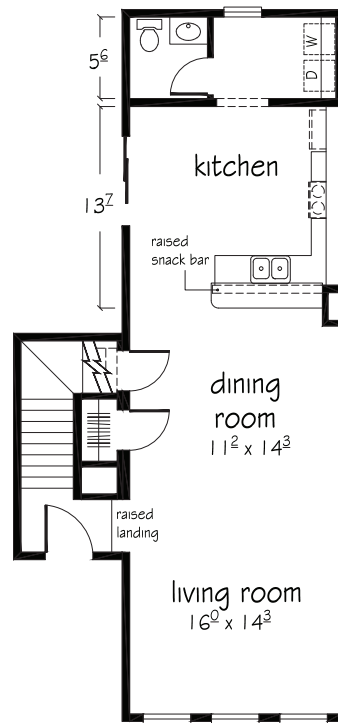
Fort Washington



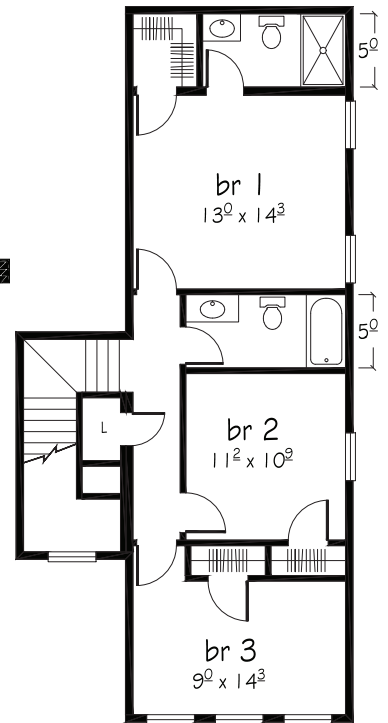
Fort Washington I
1st floor plan



Fort Washington I
2nd floor plan



Fort Washington II
1st floor plan



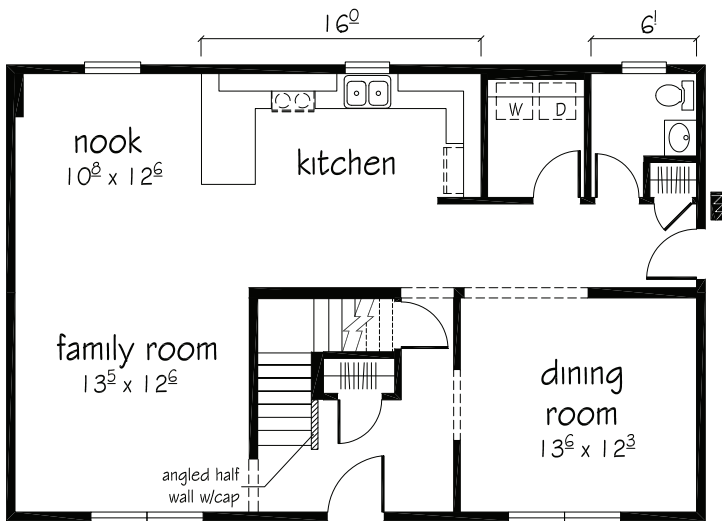
Fort Washington II
2nd floor plan

Fort Washington I | 21⁰ x 48⁰ | 1522 sq. ft.

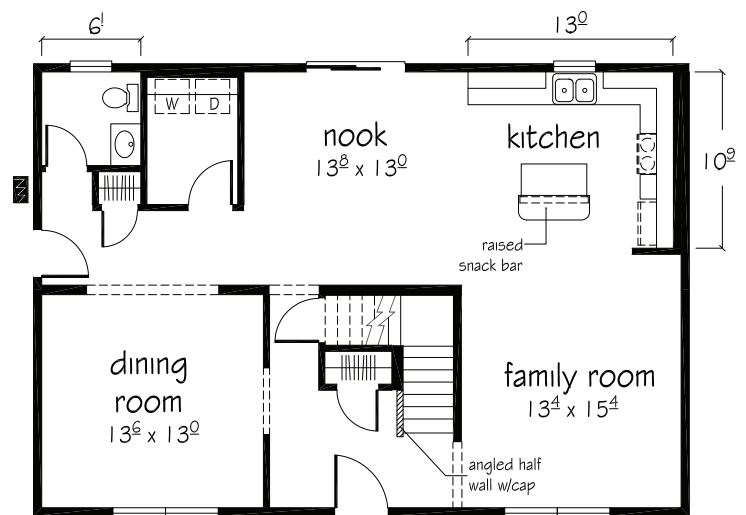
Fort Washington II | 22⁶ x 48⁰ | 1688 sq. ft.

two story

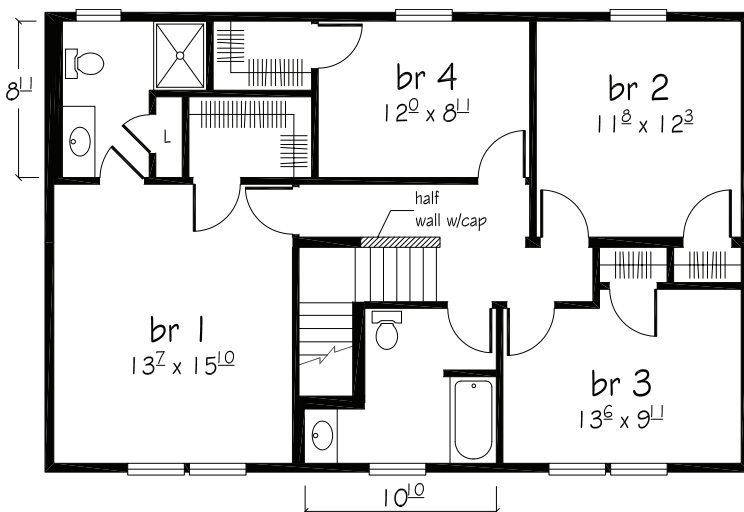
Jamestowne



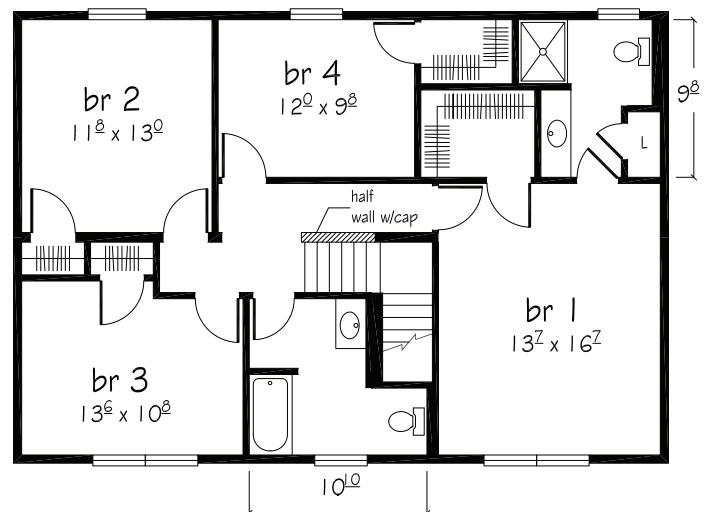
Jamestowne I
1st floor plan 26⁰ x 40⁰ 2080 sq. ft.



Jamestowne II
1st floor plan 27⁶ x 40⁰ 2200 sq. ft.



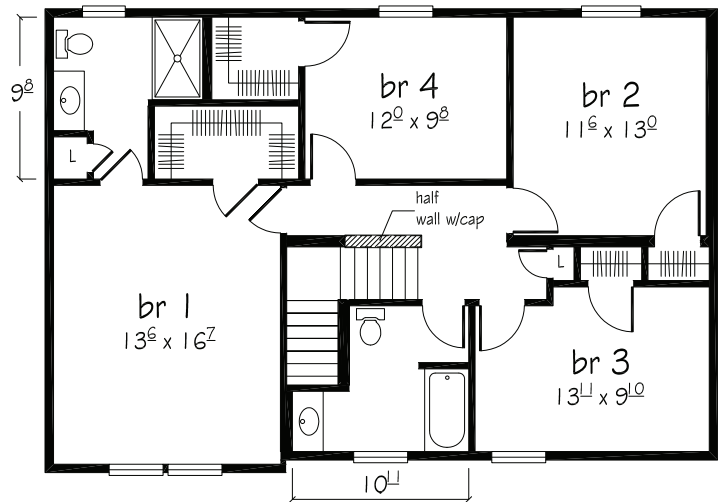
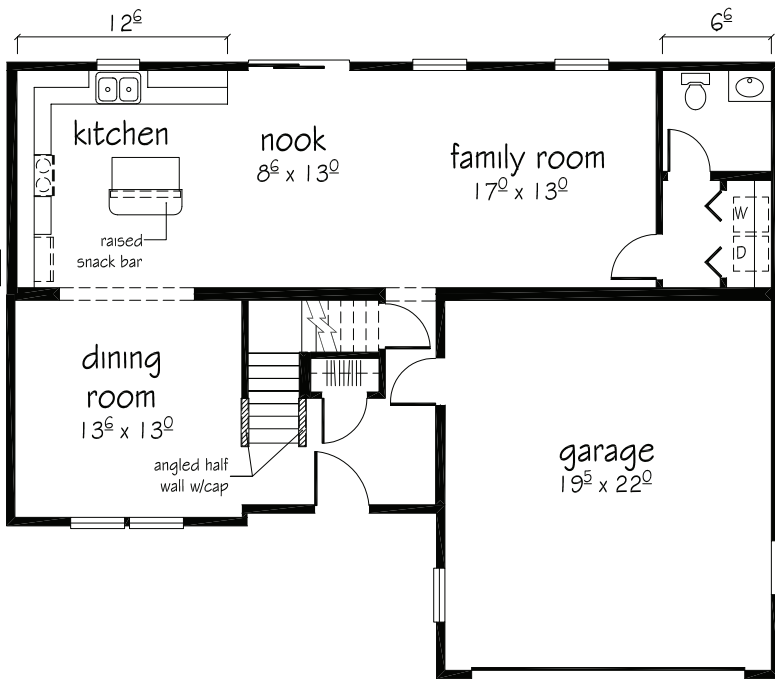
Jamestowne I 2nd floor plan



Jamestowne II 2nd floor plan

two story

Jamestowne III

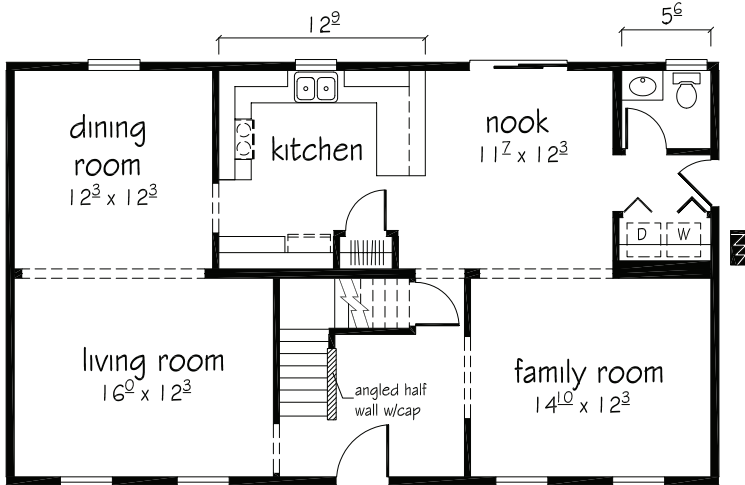


Jamestowne III
1st floor plan 26⁹/₂₇⁶ x 36⁶ 2064 sq. ft.

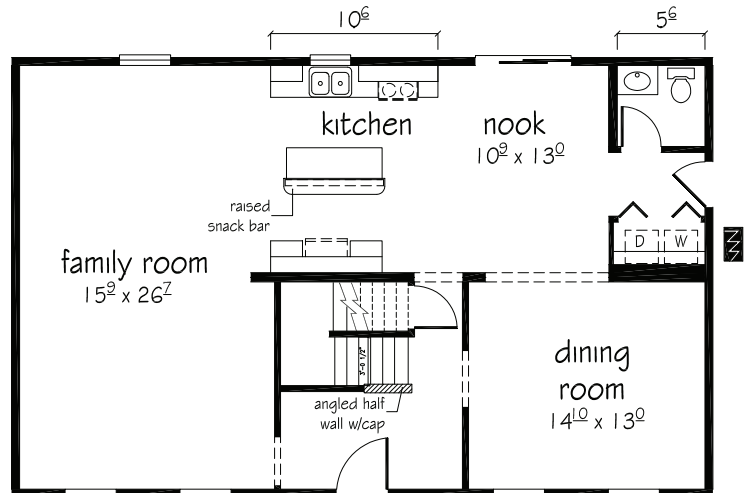
Jamestowne III
2nd floor plan

two story

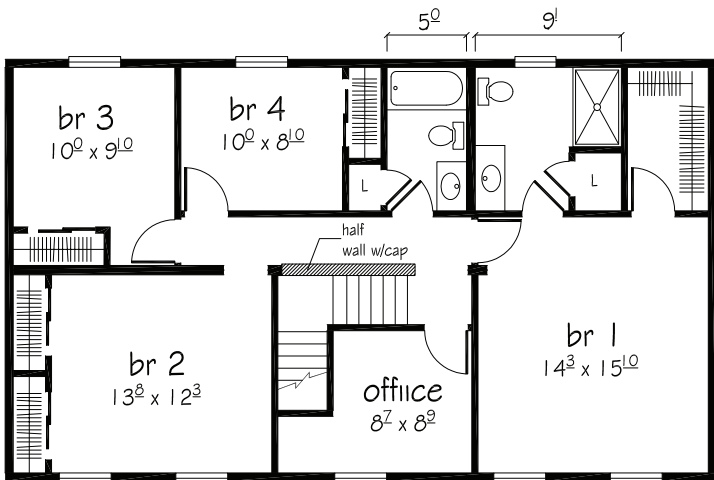
Ellensville I



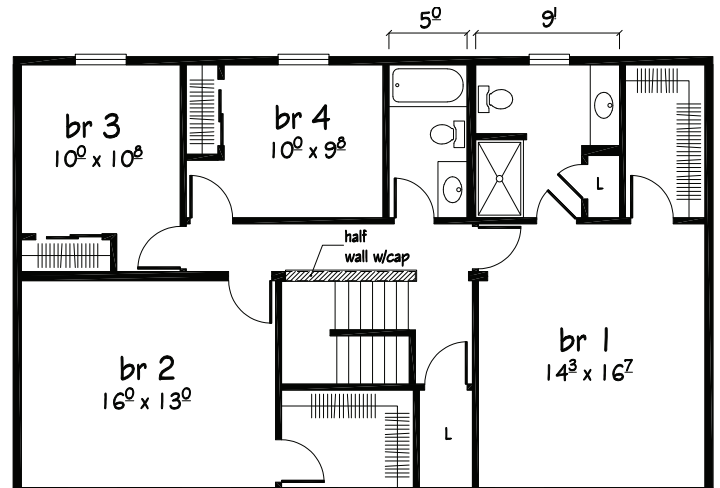
Ellensville I
1st floor plan 26⁰ x 44⁰ 2288 sq. ft.



Ellensville II
1st floor plan 27⁶ x 44⁰ 2420 sq. ft.



Ellensville I 2nd floor plan



Ellensville II 2nd floor plan

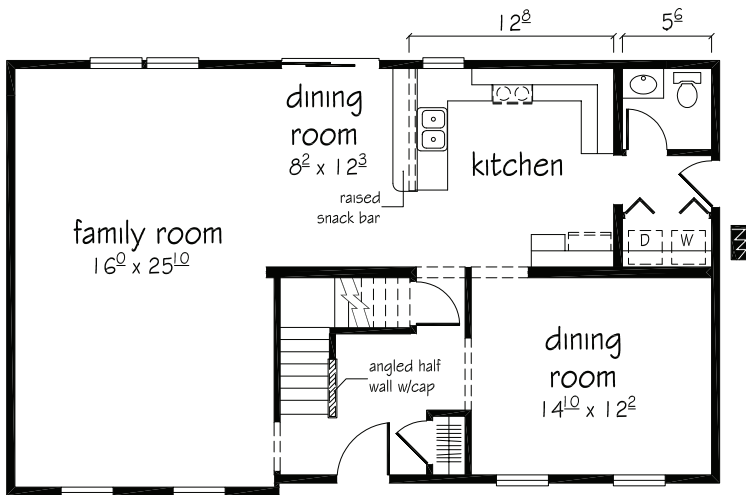
two story



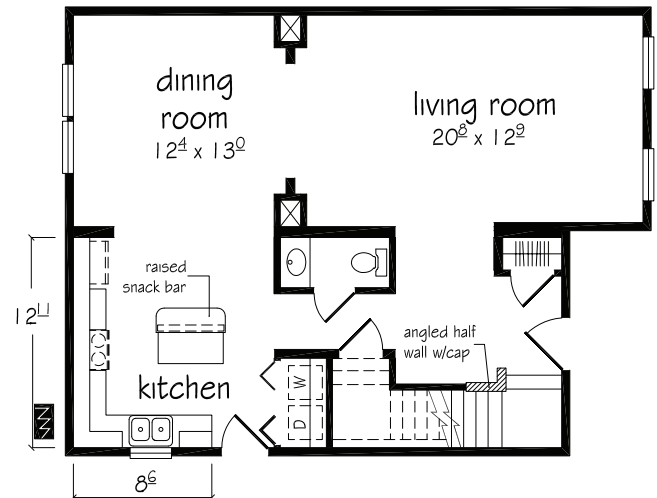
Ellensville III



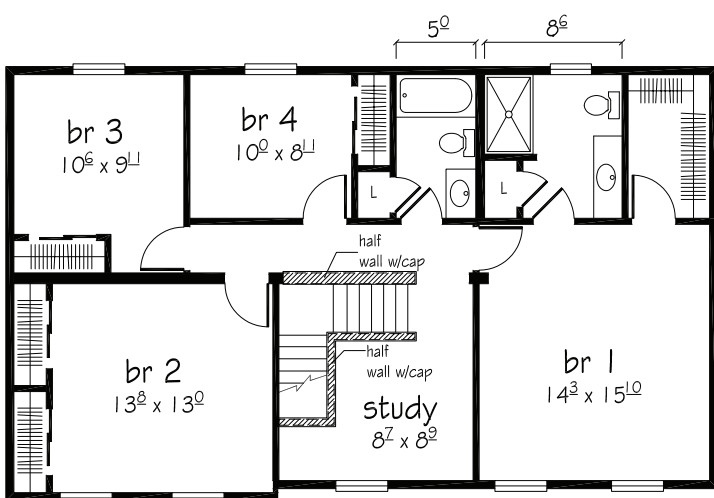
Trenton



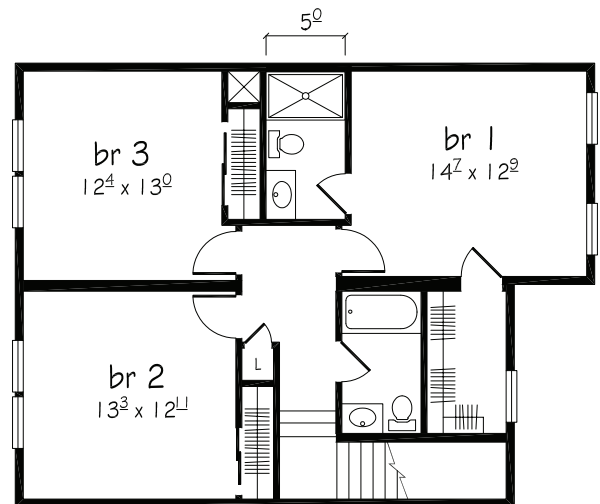
Ellensville III
1st floor plan 26⁹/₂₆⁰ x 44⁰ 2332 sq. ft.



Trenton
1st floor plan 27⁶ x 31⁰/₃₆⁰ 1843 sq. ft.



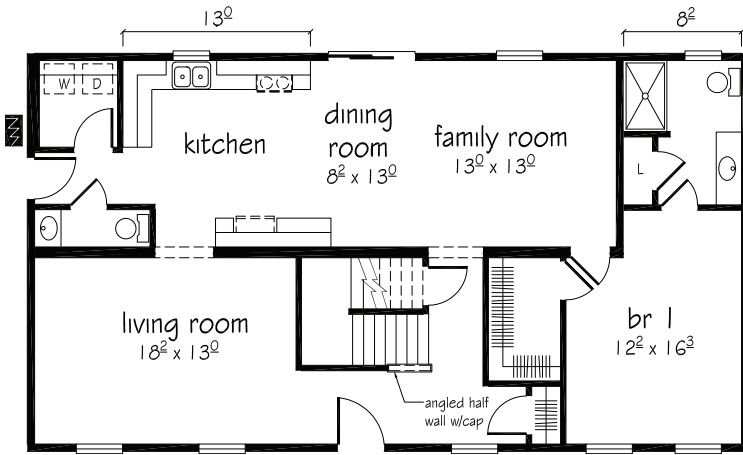
Ellensville III 2nd floor plan



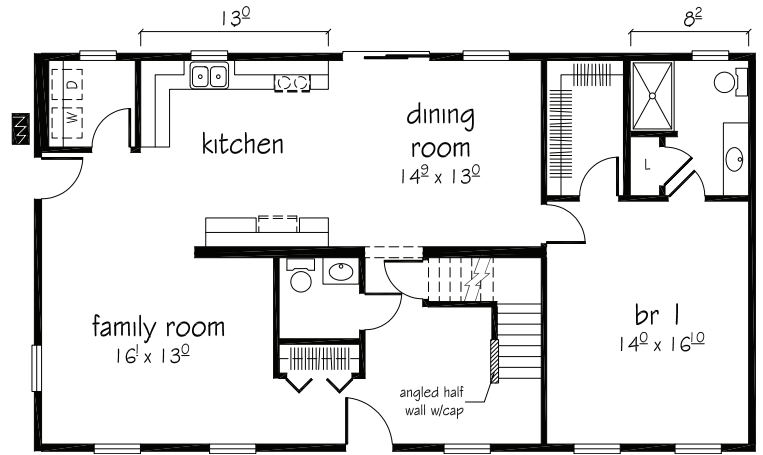
Trenton 2nd floor plan

two story

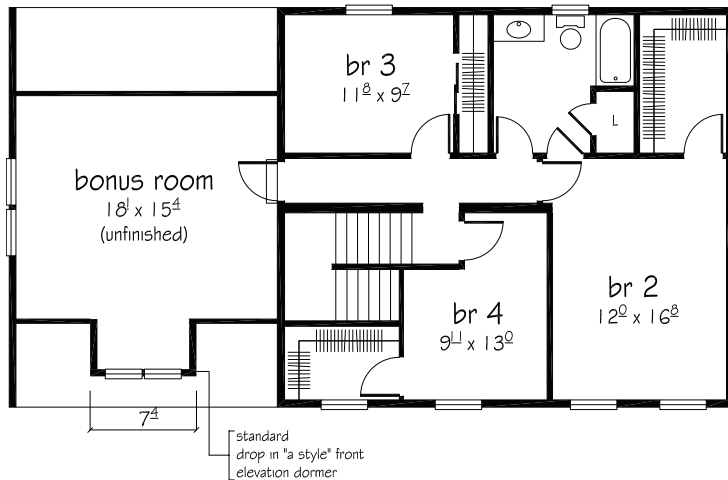
Waterford



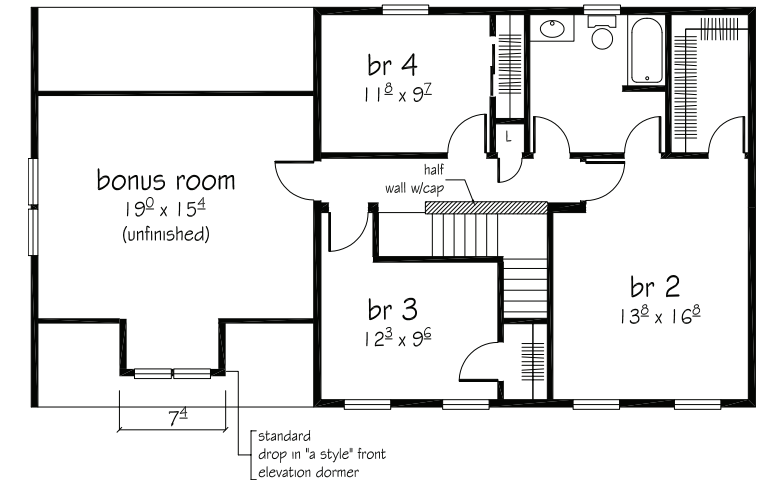
Waterford I
1st floor plan 27⁶ x 50⁰/31⁶ 2241 sq. ft.



Waterford II
1st floor plan 27⁶ x 50⁰/30⁶ 2214 sq. ft.



Waterford I
2nd floor plan 300 sq. ft. unfinished



Waterford II
2nd floor plan 313 sq. ft. unfinished