

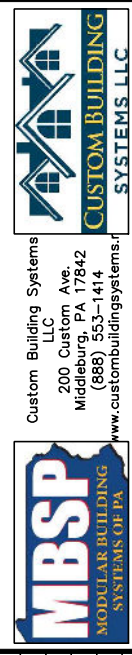
CEILING
8'-0"
FLOOR
CEILING
8'-0"
FLOOR



CEILING
FLOOR
CEILING
FLOOR

BUILDER		CUSTOMER	
CITY	CBS MODELS	CITY	PIKE
WIND SPEED ??? MPH	CITY	COUNTY	STATE
ORDER NO.	3	COUNTY	STATE
ORDER #	MPH	SNOW LOAD	SQ. FT.
	3	???	???
	SECOND	GUST	???
	FILE NO.	PIKE RENDERING	
	SERIAL #		
	SERIAL #		

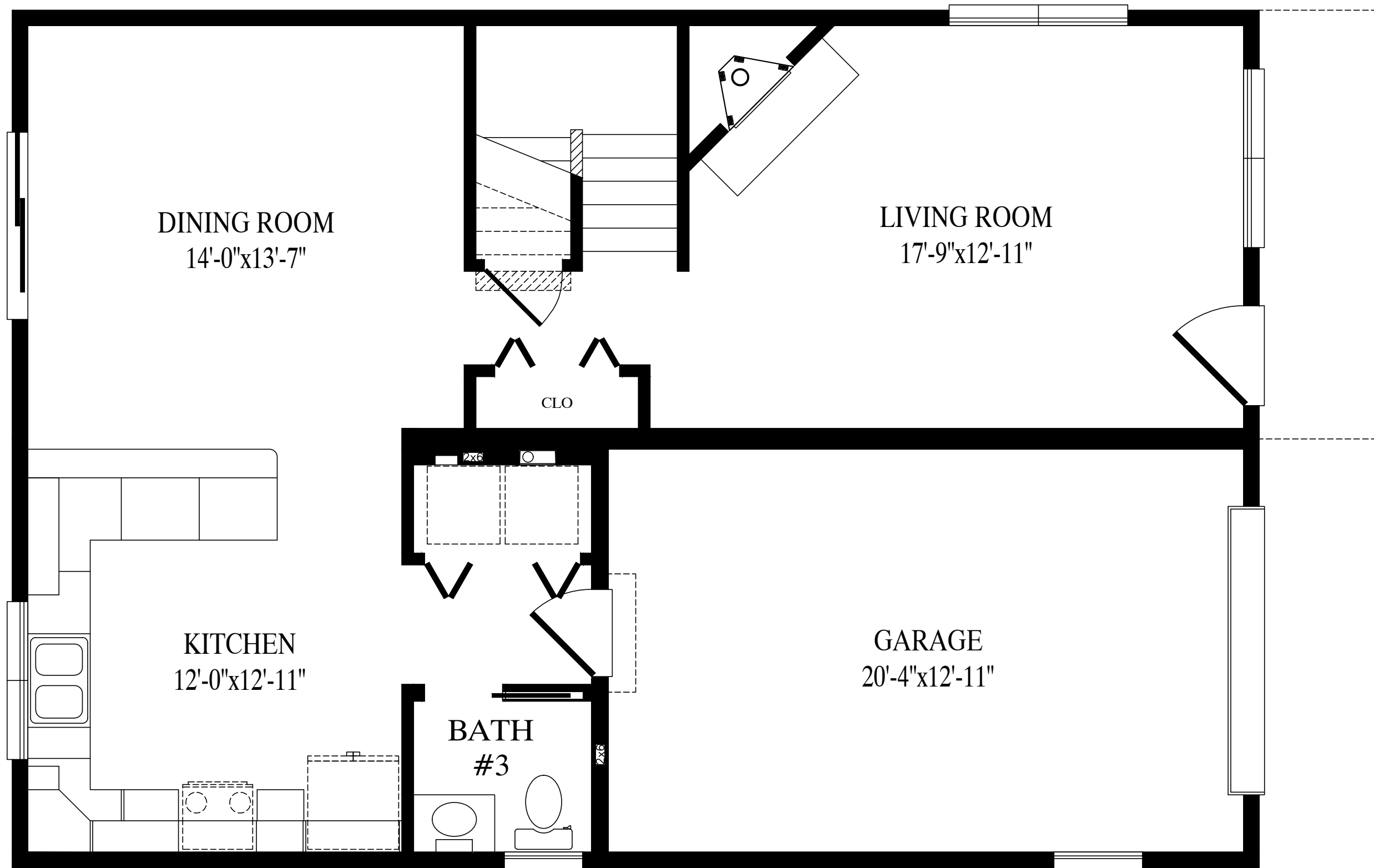
2840-2 STORY
FRONT ELEVATION



DATE:	12/19/17	STATUS:	LIT
DRAWN BY:	JLF		

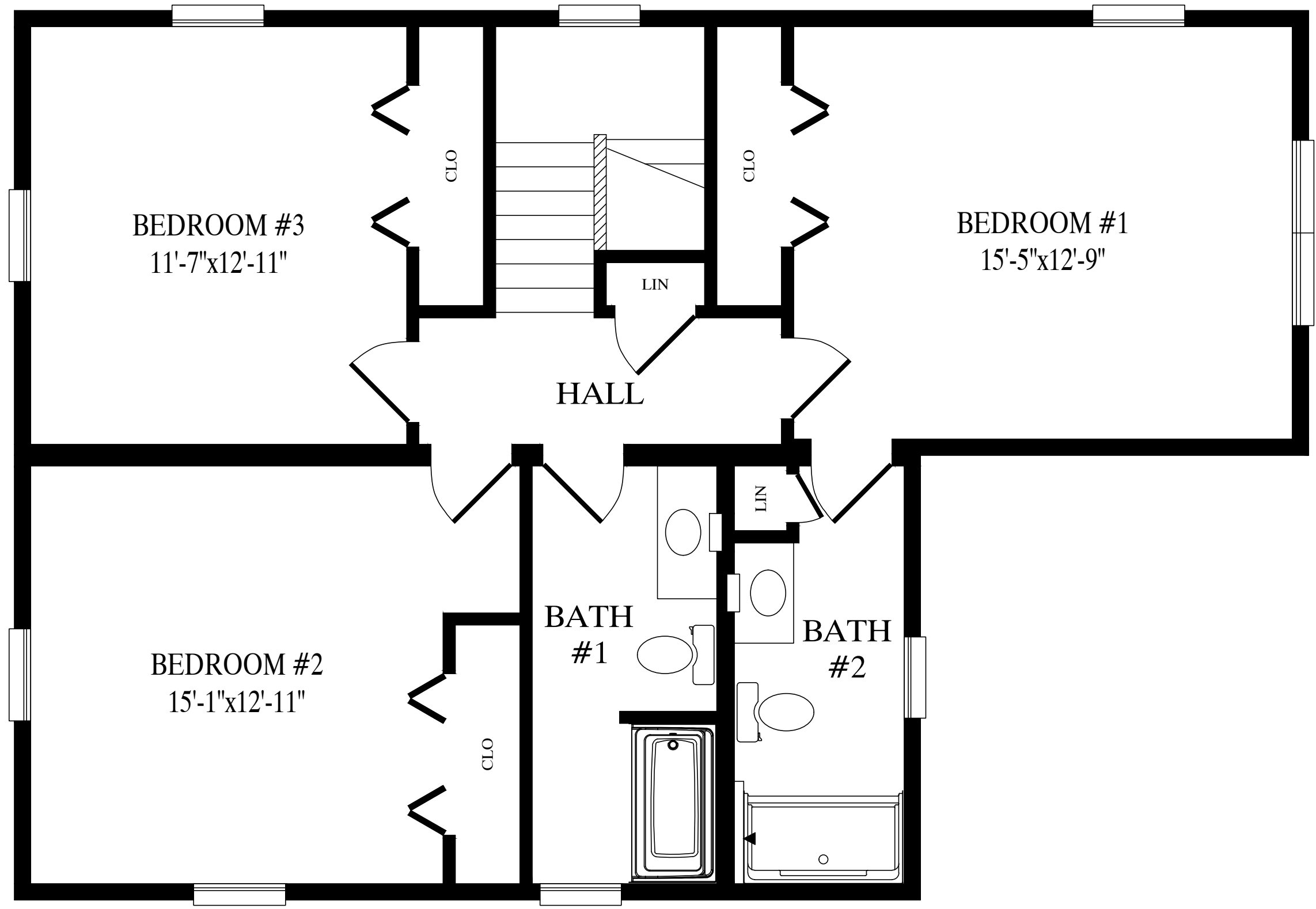
GREGO 8/28/2024 3:46:09 PM

ACTUAL HOUSE MAY VARY FROM ELEVATION-ACCESS TO GRADE ON-SITE BY OTHERS



Pike

820 Sq. Ft. Living Area 1st Fl
280 Sq. Ft. Garage



FRONT

935 Sq. Ft. Living Area 2nd Fl