



OPTIONAL PORCH

GREGO 7/10/2025 11:35:06 AM

ACTUAL HOUSE MAY VARY FROM ELEVATION-ACCESS TO GRADE ON-SITE BY OTHERS

CUSTOMER		SALEM	
CITY	CBS CAPE	COUNTY	STATE
WIND SPEED ???	CITY	COUNTY	STATE
MPH	???	SNOW LOAD	???
VULT	???	FILE NO.	SALEM RENDERED
ORDER NO.	SERIAL NO.	SERIAL #	FILE NO.
ORDER #	SERIAL #	SERIAL #	FILE NO.

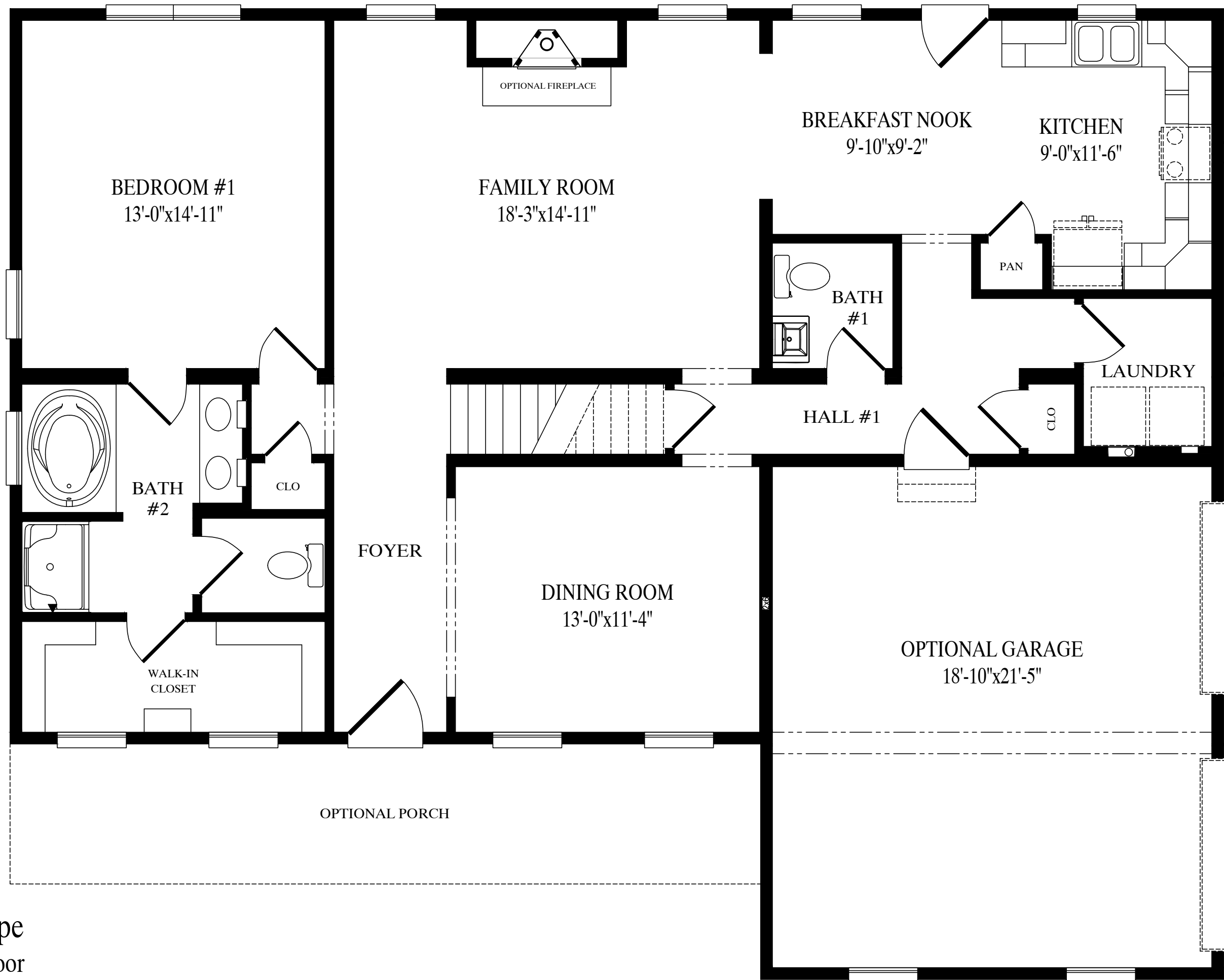
4252 - CAPE  
FRONT ELEVATION

Custom Building Systems LLC  
200 Custom Ave  
Middleburg, PA 17842  
(888) 553-414  
www.custombuildingsystems.net

**MBSP**  
MODULAR BUILDING  
SYSTEMS OF PA

**CUSTOM BUILDING**  
SYSTEMS LLC

DATE:	DRAWN BY:	STATUS:
00/00/00	INIT	STAT

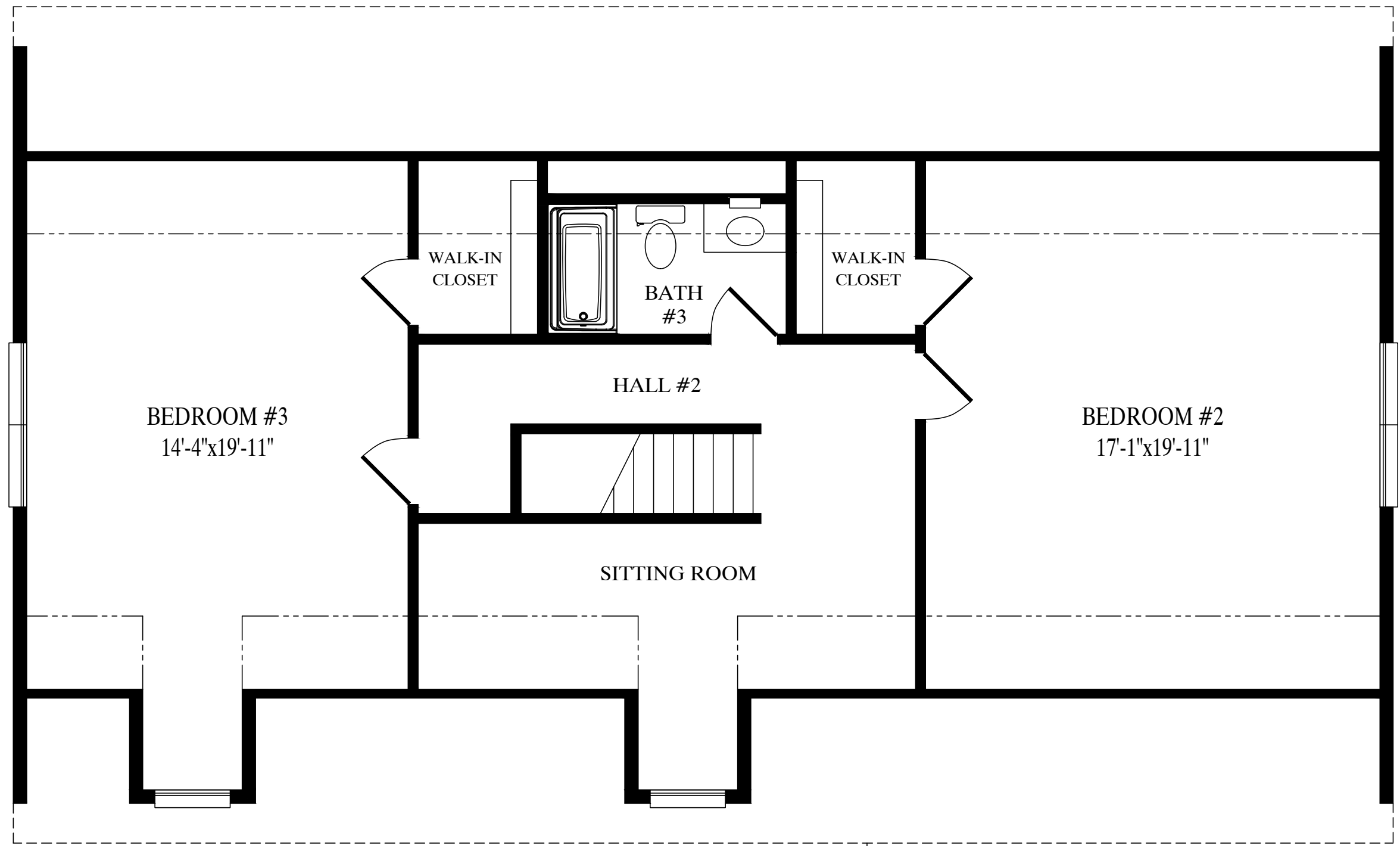


# Salem

41'-7" x 52' Cape

1409 sq. ft. first floor

1838 sq. ft. w/garage option



1108 sq. ft. proposed second floor