



CUSTOM SELECT RANCH HOMES



Simplex Industries, Inc.
Keyser Valley Industrial Park
1 Simplex Drive
Scranton, PA 18504

Corporate: (570) 346-5113
Toll Free: (800) 233-4233
Corporate Fax: (570) 346-3731
Sales Fax: (570) 346-3732



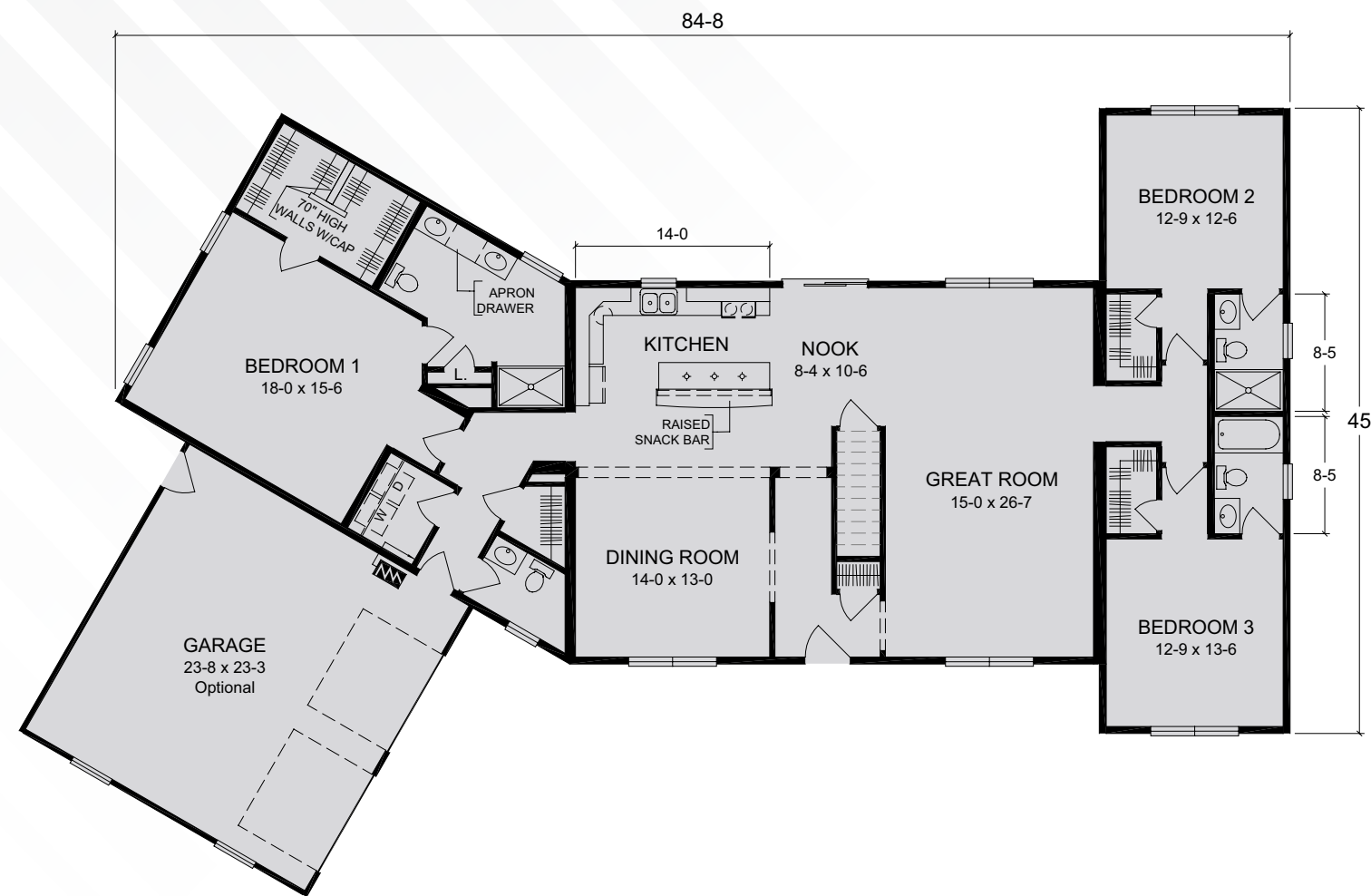
SIMPLEXHOMES.COM

SIMPLEXHOMES.COM



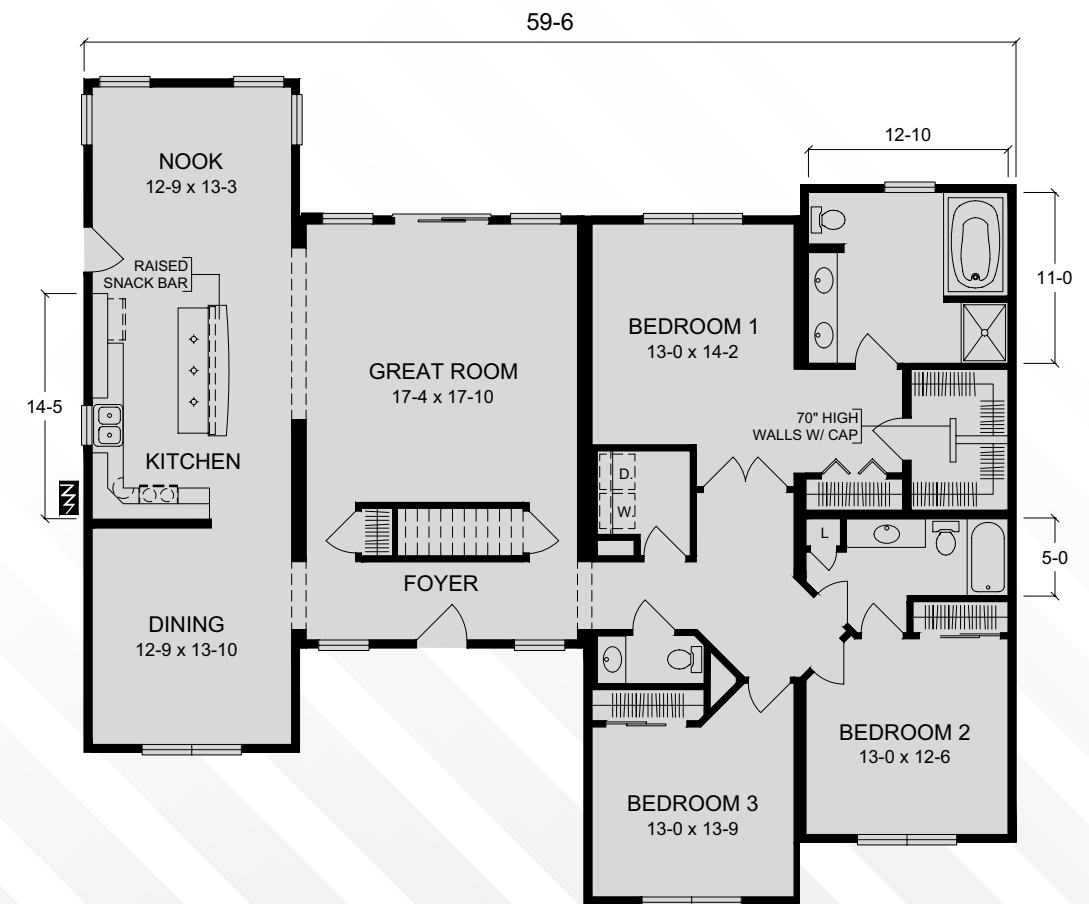
THE PARKRIDGE II

84'-8" x 45'-0"
2411 sq ft



THE WOODLAND PARK II

59'-6" x 52'-9"
2278 sq ft





THE MADISON PARK II

64'-0" x 63'-6"
2343 sq ft



THE LEXINGTON PARK II

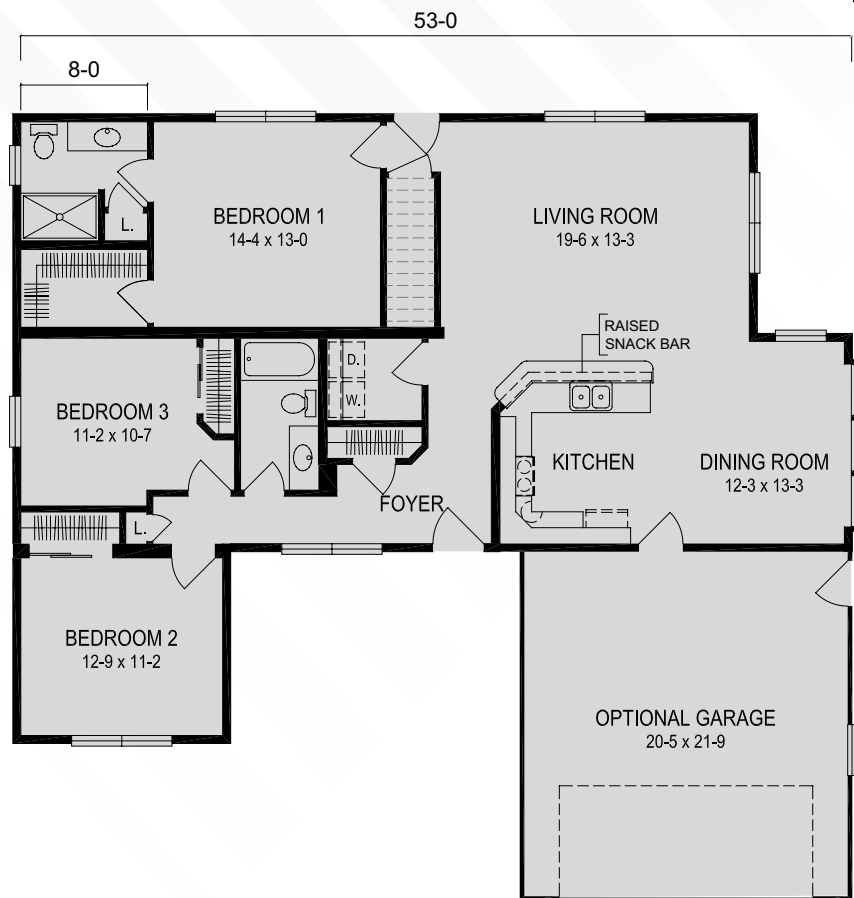
41'-5" x 58'-0"
1945 sq ft





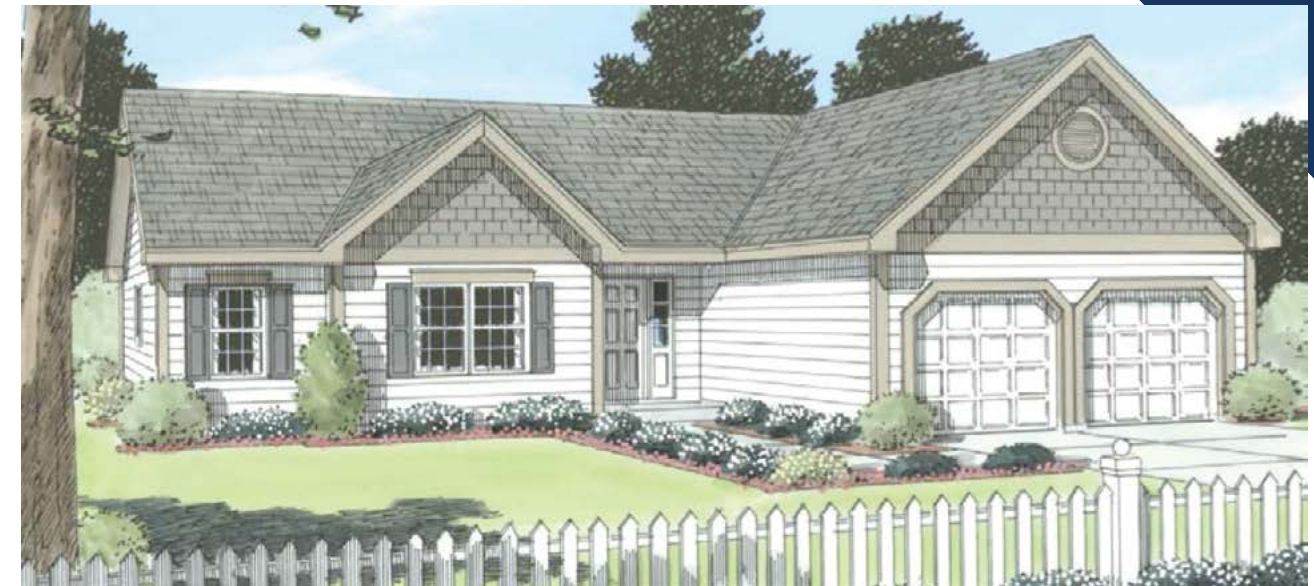
THE CHRISTINA II

53'-6" x 54'-3"
1942 sq ft



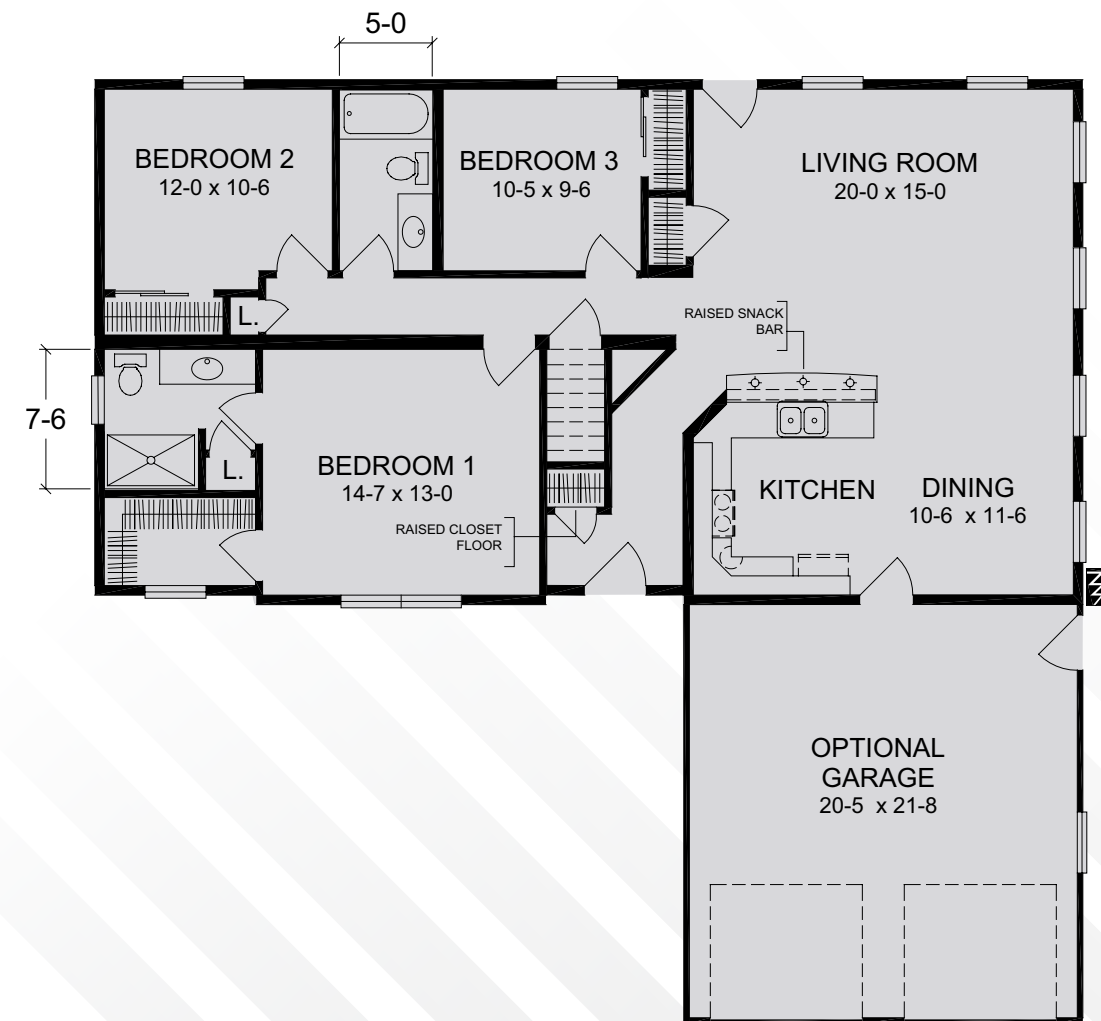
THE CAROLYN II

39'-6" x 47'-0" / 53'-0"
1545 sq ft



THE PINEHURST II

27'-6" x 52'-0"
1427 sq ft





THE WASHBURN IV

46'-0" x 39'-2"
1541 sq ft



THE ANDOVER II

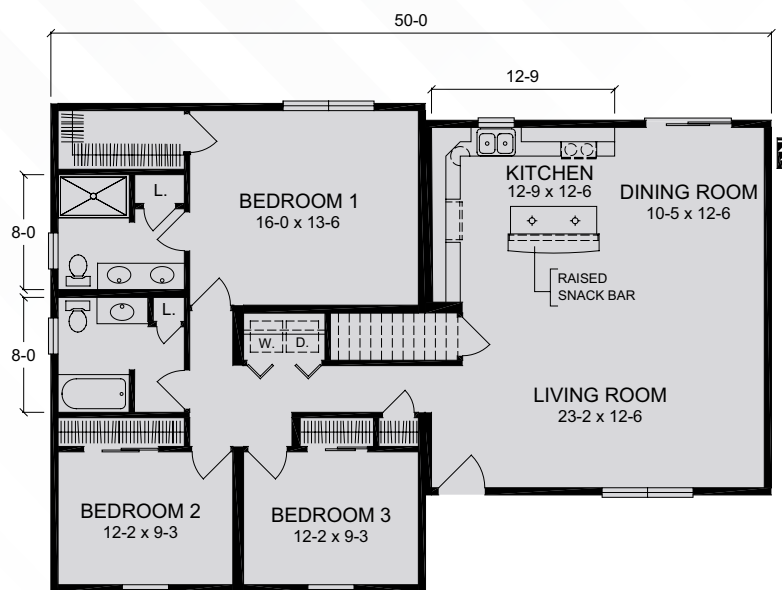
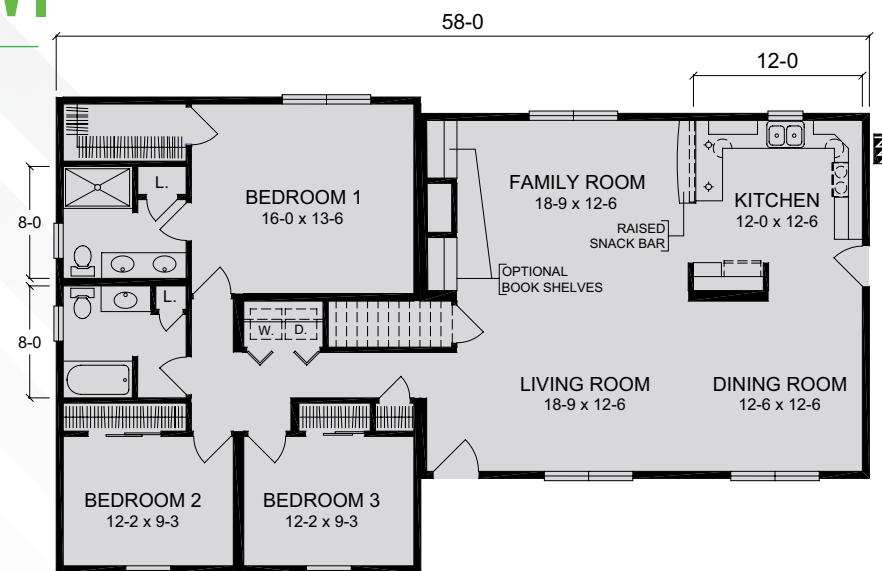
27'-6" x 62'-0"
1600 sq ft





THE NEW OXFORD VI

26'-0" x 34'-0" / 26'-0" x 32'-0"
1724 sq ft



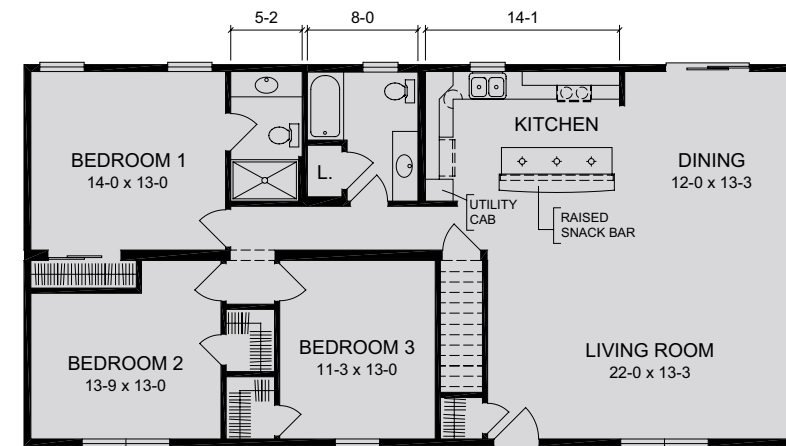
THE NEW OXFORD V

26'-0" x 34'-0" / 26'-0" x 24'-0"
1515 sq ft



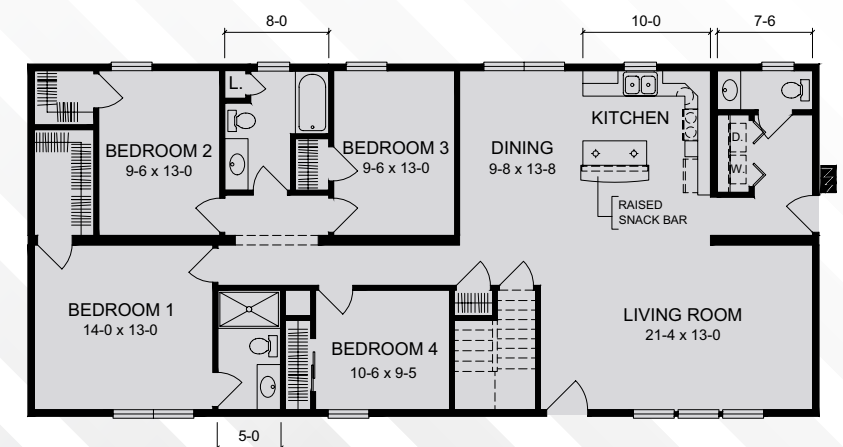
THE MANSFIELD II

27'-6" x 56'-0"
1540 sq ft



THE ROCHESTER IV

27'-6" x 62'-0"
1705 sq ft





THE ASHLEY IV

27'-6" x 58'-0"
1595 sq ft



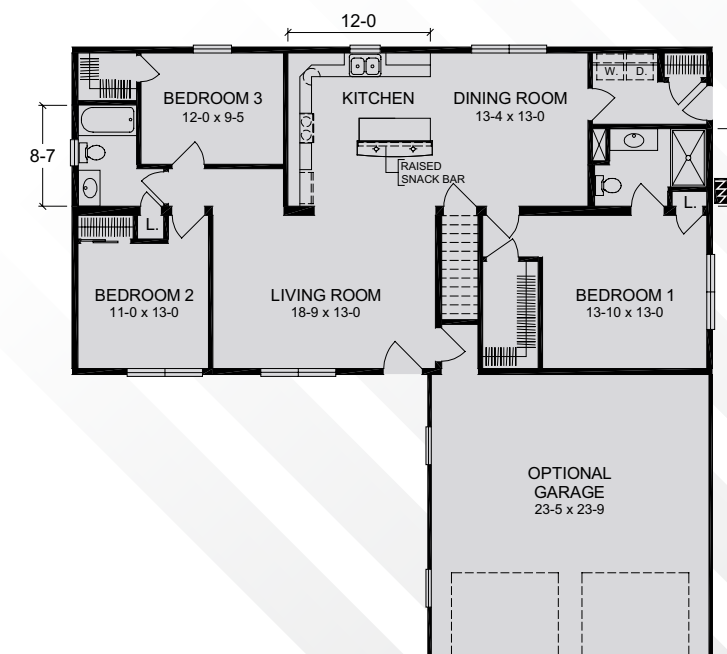
THE SOMERSET IV

27'-6" x 56'-0"
1542 sq ft



THE ELMVIEW IV

27'-6" x 54'-0"
1490 sq ft





THE SPRINGFIELD IV

27'-6" x 52'-0"
1435 sq ft



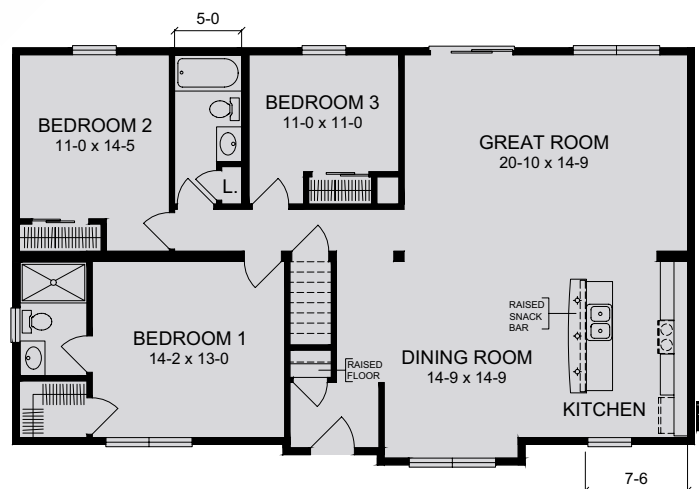
THE AMHURST IV

30'-6" x 50'-0"
1500 sq ft



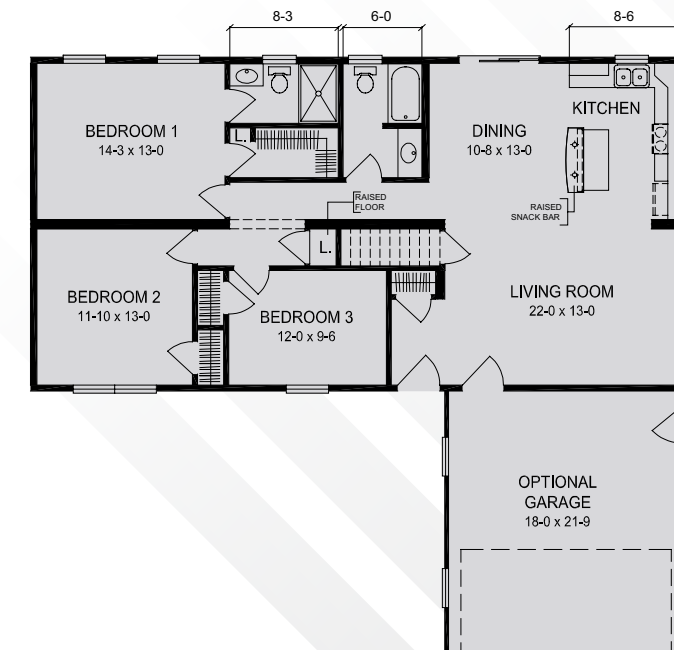
THE VERNON II

30'-6" x 50'-0"
1476 sq ft



THE BRIARDALE IV

27'-6" x 50'-0"
1380 sq ft





THE BEECHDALE V

26'-0" x 42'-0"
1096 sq ft



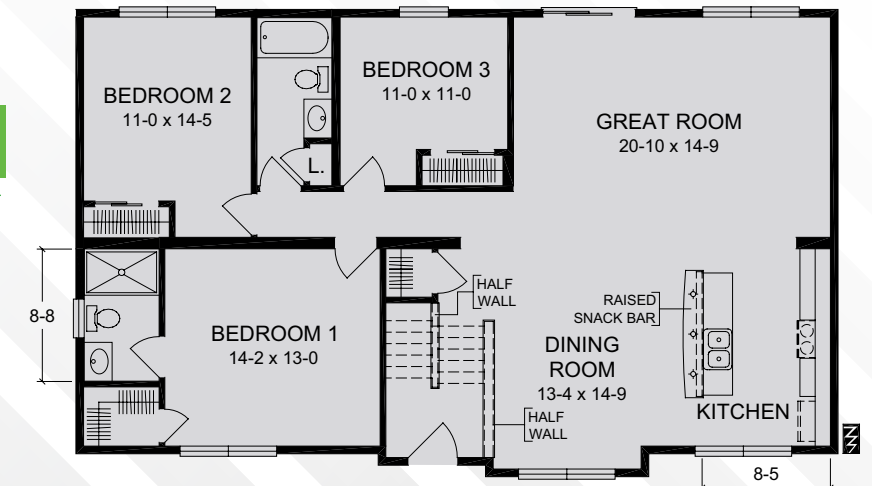
THE SAVANNAH III

27'-6" x 38' x 0" / 60'-0"
1351 sq ft



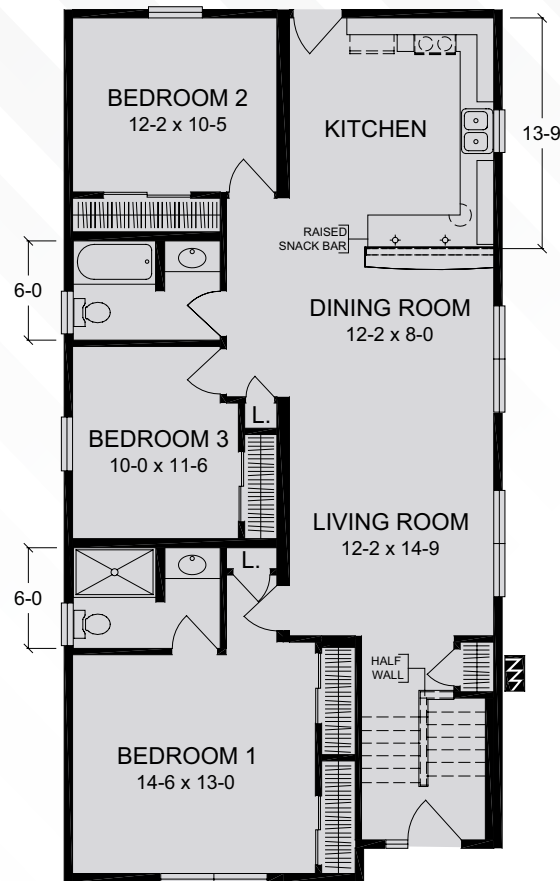
THE WINCHESTER III

30'-6" x 50'-0"
1476 sq ft



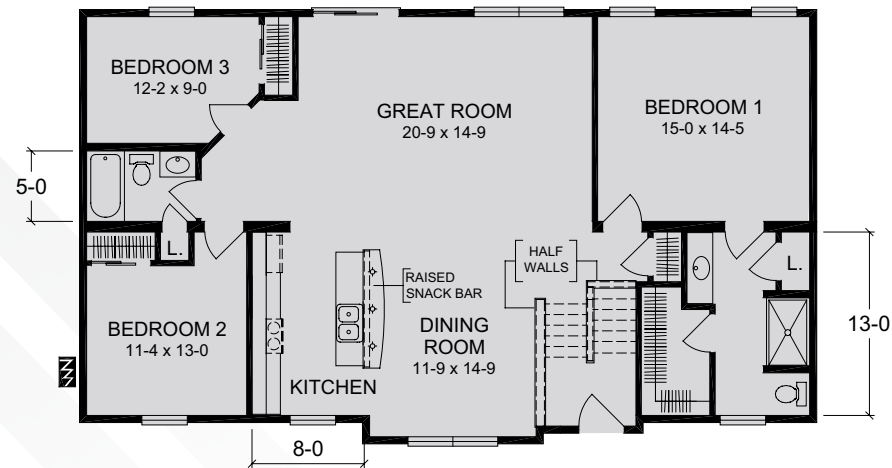
NEW HUNTINGTON III

26'-0" x 52'-0"
1340 sq ft



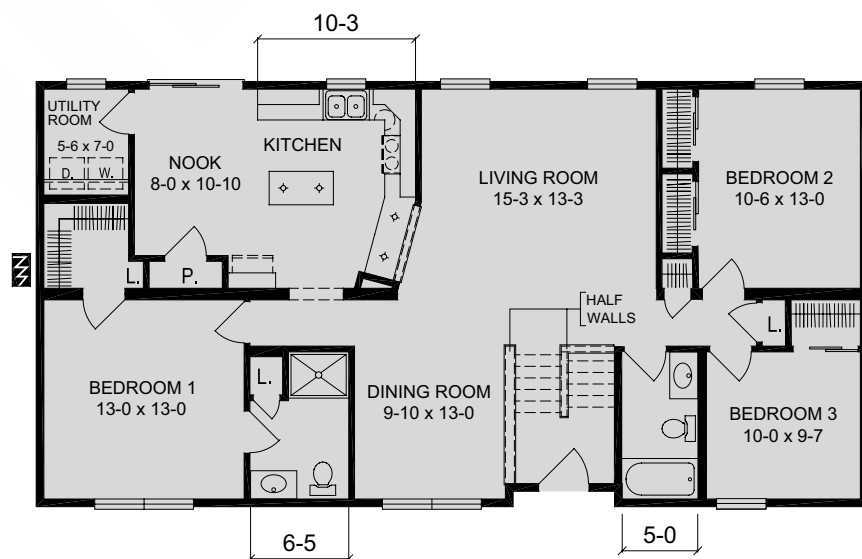
THE BRADLEY II

30'-6" x 52'-0"
1537 sq ft



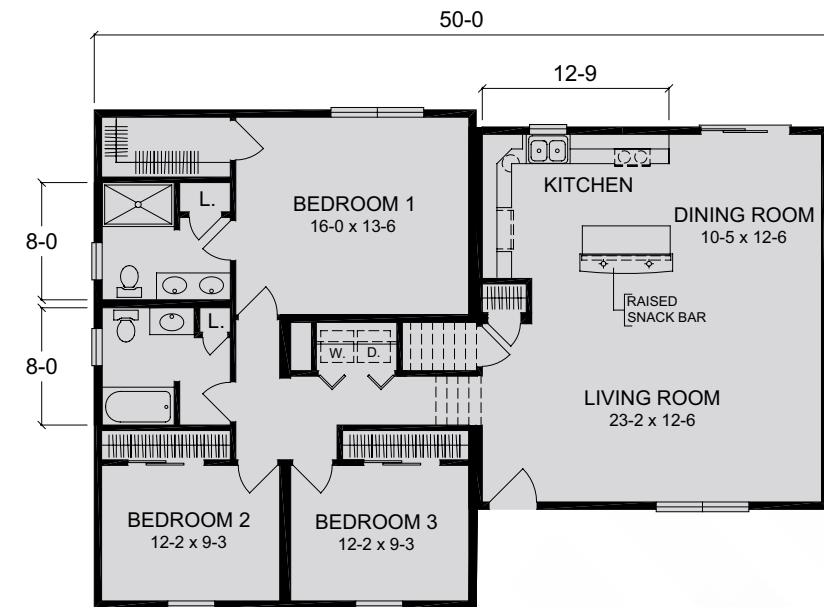
THE BIRCHWOOD II

27'-6" x 54'-0"
1483 sq ft



THE NEW OXFORD VII SPLIT LEVEL

26'-0" x 34'-0" / 24'-0"
1515 sq ft



THE NEW OXFORD VIII SPLIT LEVEL

26'-0" x 42'-0" / 46' x 0", 26'-0" x 24' x 0"
1777 sq ft

