

Hana 521L

SPECIFICATIONS

Seats	3
Jets	21
Size	84 x 61 x 32 in
Dry Weight	528 lbs
Water Capacity	225 gal
Heater	5.5kw
Pump	3.0 BHP 2-Spd 120 V



STANDARD FEATURES

- Warranty:
Lifetime Structure^a
1-Year Surface
1-Year Parts, Labor, Plumbing and Electrical
1-Year Cabinet
- Weather Guard Covers
- ThermalWrap Insulation with ABS Bottom
- Ozone Ready
- Stainless Steel Jets
- Maintenance Free Royalwood Cabinet
- Digital Control System with LCD Topside
- Heater: 1 kW @ 120 V, 4 kW @ 240 V
- GFCI Cord: 15 ft 120V, 15 A for North America (60 Hz)
- 35 Sq. Ft. Filter
- 1 Blue LED

OPTIONAL FEATURES

- Full Foam
(Required by law for certain States. Check with your local dealer)
Note: 240V (60 Hz) 527B Tonga and 521L Hana option not available at point of sale in States with energy efficiency requirement. These spas must be sold as 120V (60 Hz) with proper energy efficiency standard labeling in compliant States. Consumer can make modification upon installation at their discretion.
- Ozonator
- Multicolor 10 LED
- Heater Valves
- Cover Lifter
 - 1) Manual
 - 2) Hydraulic

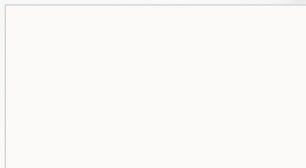


BHP: Brake Horsepower | HP: Horsepower | ^aOnly Available with Elite Model Upgrade | +++Where Allowed By Law | DB: Dual Aqua Foot Jets | ^{*}Refer to Owner's Manual for Full Description | ~Volumes are measured per APSP-14 testing. Volumes in field may vary by customers preference.

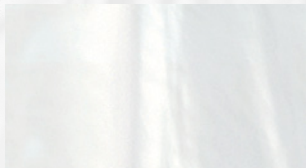
Tropic Seas Spas

COLOR OPTIONS

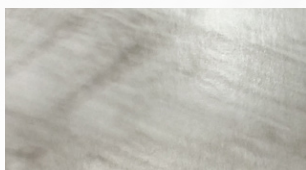
ACRYLIC COLORS



White
Solid



Silver Marble++
Marble Series



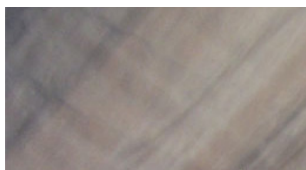
Glacier Mountain++
Metallix Series+



White Pearl++
Luster Series+



Midnight Canyon++
Luster Swirl Series+



Tuscan Sun++
Luster Swirl Series+



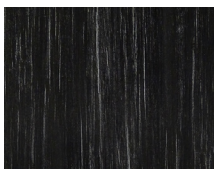
Storm Clouds
Luster Swirl Series+



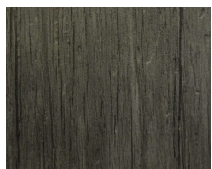
Smoky Mountains++
Luster Swirl Series+



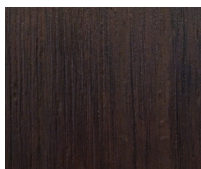
ROYALWOOD CABINETRY COLORS



Charcoal

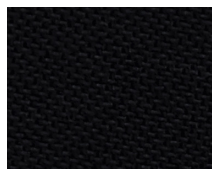


Grey

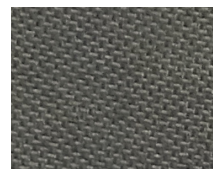


Java

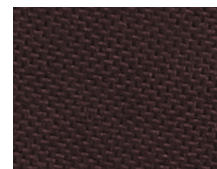
WEATHER GUARD COVER COLORS



Midnight



Stone



Pinot