

# Maui 851L

## SPECIFICATIONS

|       |   |
|-------|---|
| Seats | 6 |
|-------|---|

|      |    |
|------|----|
| Jets | 51 |
|------|----|

|      |                 |
|------|-----------------|
| Size | 91 x 91 x 36 in |
|------|-----------------|

|            |         |
|------------|---------|
| Dry Weight | 800 lbs |
|------------|---------|

|                |         |
|----------------|---------|
| Water Capacity | 380 gal |
|----------------|---------|

|        |       |
|--------|-------|
| Heater | 5.5kw |
|--------|-------|

|       |  |
|-------|--|
| Pumps | (1) 5.0 BHP 2-Spd<br>(1) 5.0 BHP 1-Spd |
|-------|--|



## STANDARD FEATURES

- Warranty:
  - Lifetime Structure<sup>a</sup>
  - 5-Year Surface
  - 3-Year Parts, Labor, Plumbing and Electrical
  - 1-Year Cabinet
- Weather Guard Covers
- ThermalWrap Insulation System with ABS Bottom
- Ozonator
- Heater Valves
- Digital Control with LCD Color Illuminated Topside
- Heater: 5.5 kW for North America (60 Hz)
- 12 in. TropicFall
- TropicStar LED: (3) 2 in. Lights , (1) 3.5 in. Spa Light
- Stainless Steel/Graphite Jets
- Maintenance Free Royalwood Cabinet
- 50 sq. ft. Filter

## OPTIONAL FEATURES

- Full Foam<sup>\*\*</sup>
- Elite Model Upgrade:
  - Circulation System with Microfilter
  - Full Foam<sup>\*\*</sup>
  - All Acrylic Colors
- Stereo Systems:
  - 1) Bluetooth® Music Experience
    - Bluetooth Receiver, AM/FM, USB, Auxiliary Input, (4) Speakers, Subwoofer
  - 2) Auxiliary Input & Bluetooth Media Locker
    - Bluetooth Receiver, 3.5 mm Input for MP3 devices, (4) Speakers, Subwoofer
    - Optional (2) 3 in. Patio Speakers
- Water Purification:
  - 1) Optix AOP™
  - 2) O3 Infusing Chamber\*
  - 3) FROG® @ease™ w/SmartChlor™+++
- Worldwide WiFi App Module
  - Download App for Smart Device to Control Spa Wirelessly
- LED Lighting
  - 1) Pacific Aqua Glow LED
- Cover Lifter
  - 1) Manual
  - 2) Hydraulic

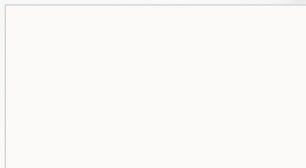


BHP: Brake Horsepower | HP: Horsepower | <sup>a</sup>Only Available with Elite Model Upgrade | +++Where Allowed By Law | DB: Dual Aqua Foot Jets | <sup>\*</sup>Refer to Owner's Manual for Full Description | ~Volumes are measured per APSP-14 testing. Volumes in field may vary by customers preference.

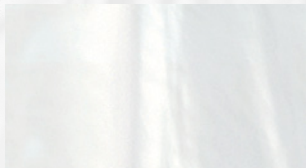
# Tropic Seas Spas

## COLOR OPTIONS

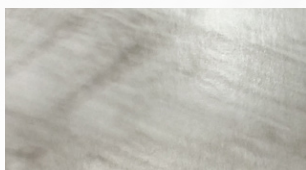
### ACRYLIC COLORS



White  
Solid



Silver Marble++  
Marble Series



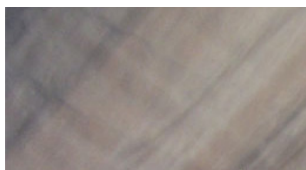
Glacier Mountain++  
Metallix Series+



White Pearl++  
Luster Series+



Midnight Canyon++  
Luster Swirl Series+



Tuscan Sun++  
Luster Swirl Series+



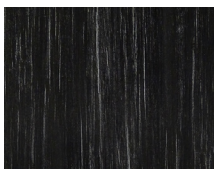
Storm Clouds  
Luster Swirl Series+



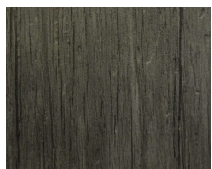
Smoky Mountains++  
Luster Swirl Series+



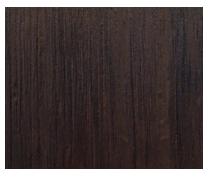
### ROYALWOOD CABINETRY COLORS



Charcoal

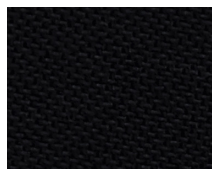


Grey

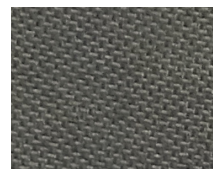


Java

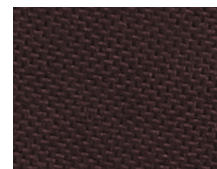
### WEATHER GUARD COVER COLORS



Midnight



Stone



Pinot