



## **KBC Mondioring Palisade Frame Wooden Plank Guide**

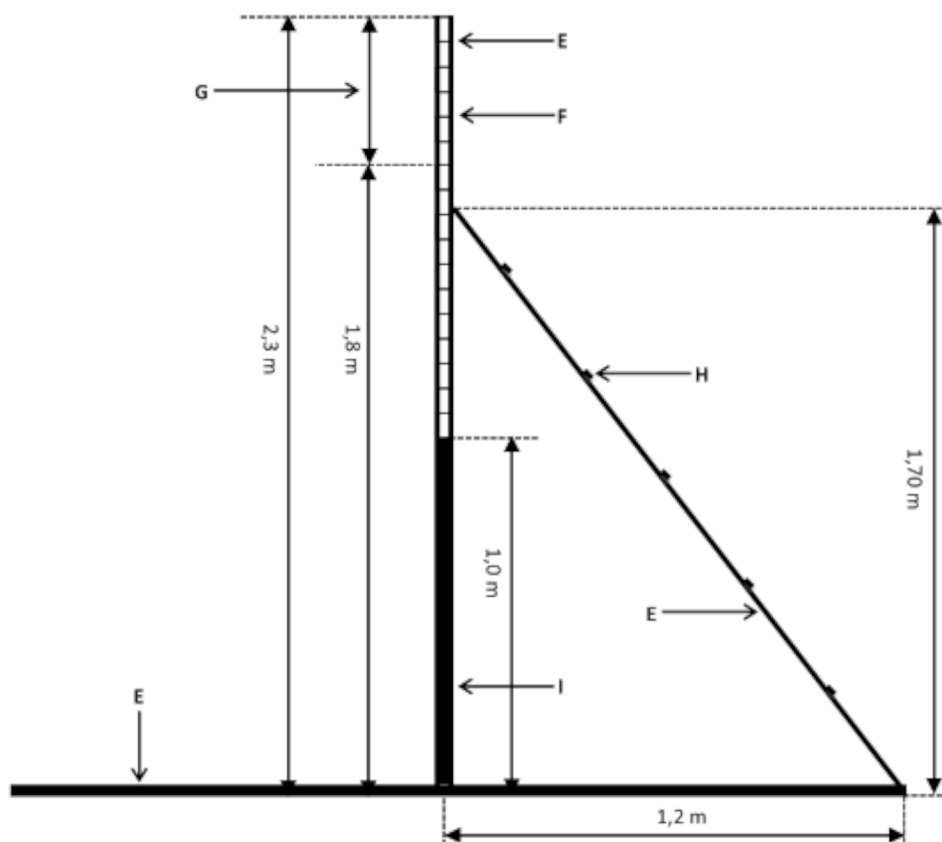


# Below is from the "INTERNATIONAL RULES OF FCI-MONDIORING COMPETITIONS" for your reference.

## Description of the exercise

The palisade is made of a fully attached panel at the bottom, up to 1 m in height; then a stack of rough boards 10 cm in height and 27 – 30 mm in thickness, unfinished. The palisade may be 1.5 m – 1.9 m in width. To allow the dog to jump down, it has an incline fixed to the posts at 1.7 m high, and on the ground about 1.2 m from the wall. Slats are placed every 30 cm to break the dog's descent. The incline also supports the palisade. In order to move it easily, the palisade is mounted on beams, in the form of a reverse T. It does not have a reverse jump, so there is no fence behind it.

## 2. Palisade

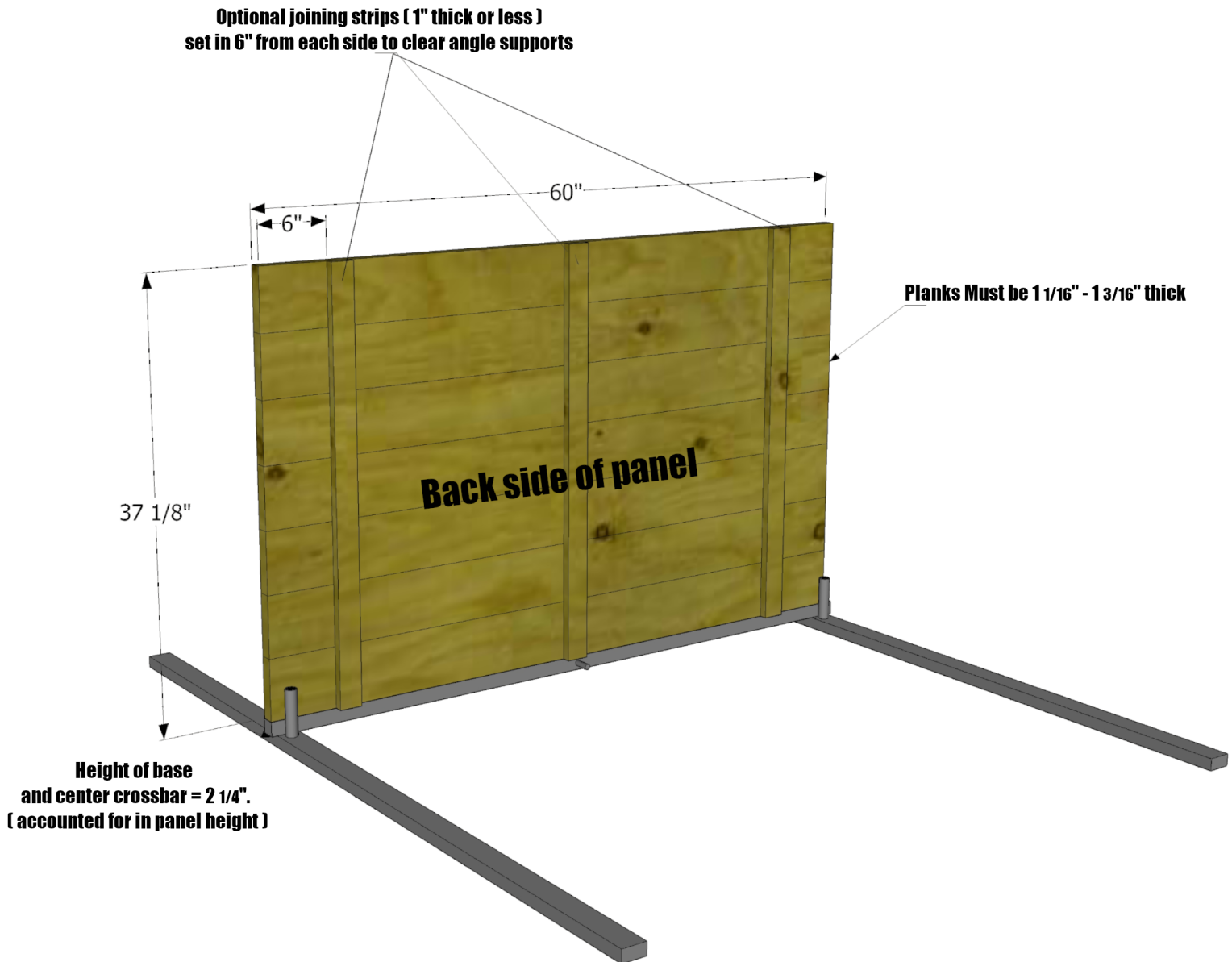


The width of the palisade 1,5m-1,9 m.

E	Timber
F	Planking of 10 cm and 27-30 mm thick, not planed
G	Adjustable height between 1,8m-2,3 m
H	Arranged slats with 30 cm distance
I	Fixed panel 1 m

# Fixed 1m wood panel

**Construct Bottom 1m wood panel using plywood or planks fastened together using joining strips. Panel should be 27mm-30mm ( 1 1/16" - 1 3/16") thick x 60" wide x 37 1/8" High.**



# Planks

**Above bottom 1m fixed panel should be 13 planks. Each plank 27mm-30mm ( 1 1/16" - 1 3/16" ) Thick x 60" Wide x 10cm ( 3 15/16" ) High.**

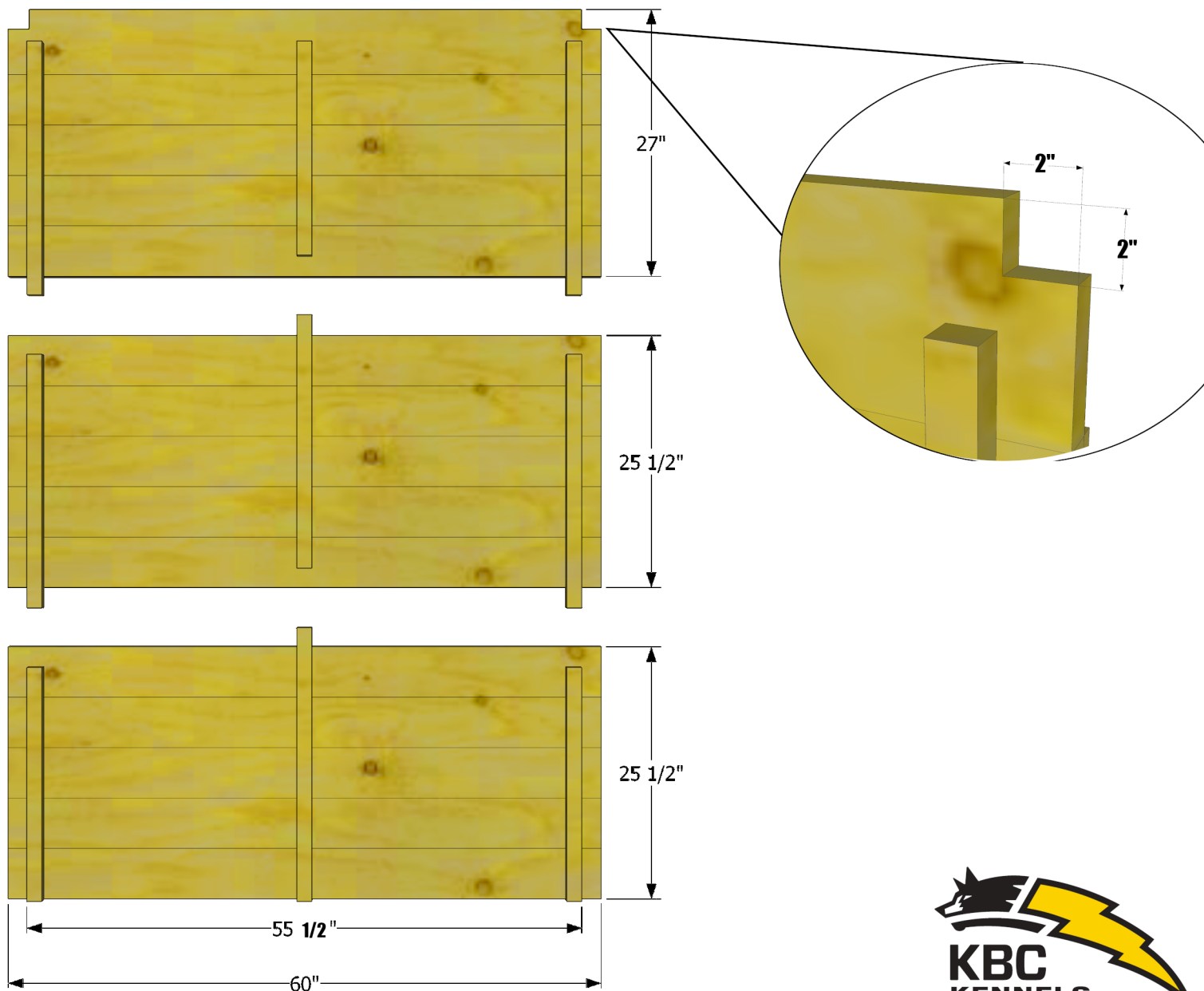
**All Planks should be rough sawen lumber in order to comply with mondioring rules.**





# RAMP

**For easier setup and breakdown make ramp in 3 sections using plywood or planks. Each section should be 60" Wide. the bottom 2 sections 25 1/2" High and the top section 27" High. Cut a 2" x 2" notch out of the top corners of the top panel to fit the palisade frame. Attach strips to the bottom side off setting each strip ( +/- 2") so each section enterlocks when put together. the outer strips should be set back from the edge 2 1/4" on each side to fit between the upper and lower ramp bars of the frame.**



**Attach slats to the top surface of the ramp  
spacing 30cm ( 11 13/16" ) apart.**

