

Facts on FURNACE FLUE LINER In Masonry Chimneys



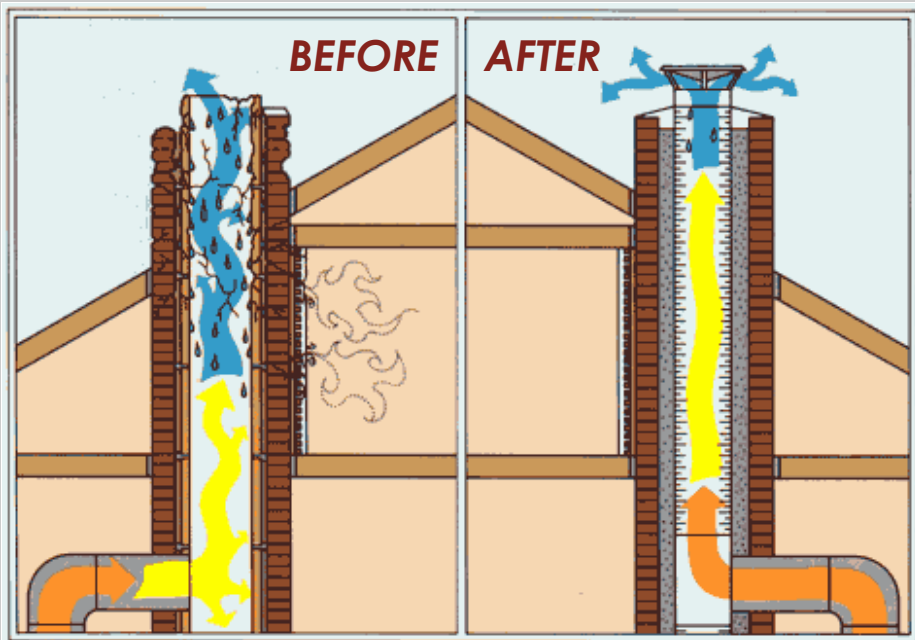
EFFLORESCENCE ON BRICK
Efflorescence is a common symptom of condensation in the chimney, leaving behind white salt deposits.



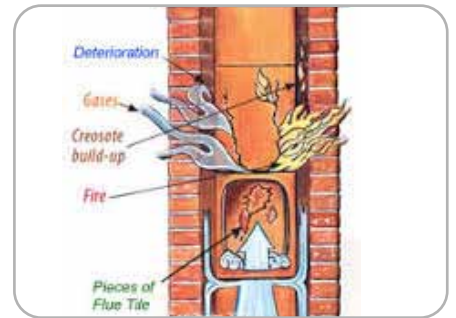
DAMAGED BRICKWORK ABOVE THE ROOFLINE
This is a result of years of condensation on a masonry chimney. Masonry chimneys either need rebuilding or tuckpointing to repair this issue, after a furnace liner is installed.



STAINING ON WALLS INSIDE THE HOME NEAR THE CHIMNEY.
If problems with a leaky chimney go unaddressed, it could lead to thousands of dollars of damage to your home.



Gas appliance flues need a stainless steel liner to contain the moisture. Stainless steel liners come with a lifetime warranty.



CARBON MONOXIDE GETTING INTO HOME
Carbon monoxide is often referred to as the silent killer. This poisonous gas is both colorless, odorless and tasteless. Mild exposure to the gas can lead to flu-like symptoms.



BLOCKAGES IN FLUE
Flue tiles can become damaged due to condensation and block the chimney, causing a carbon monoxide problem in the home.