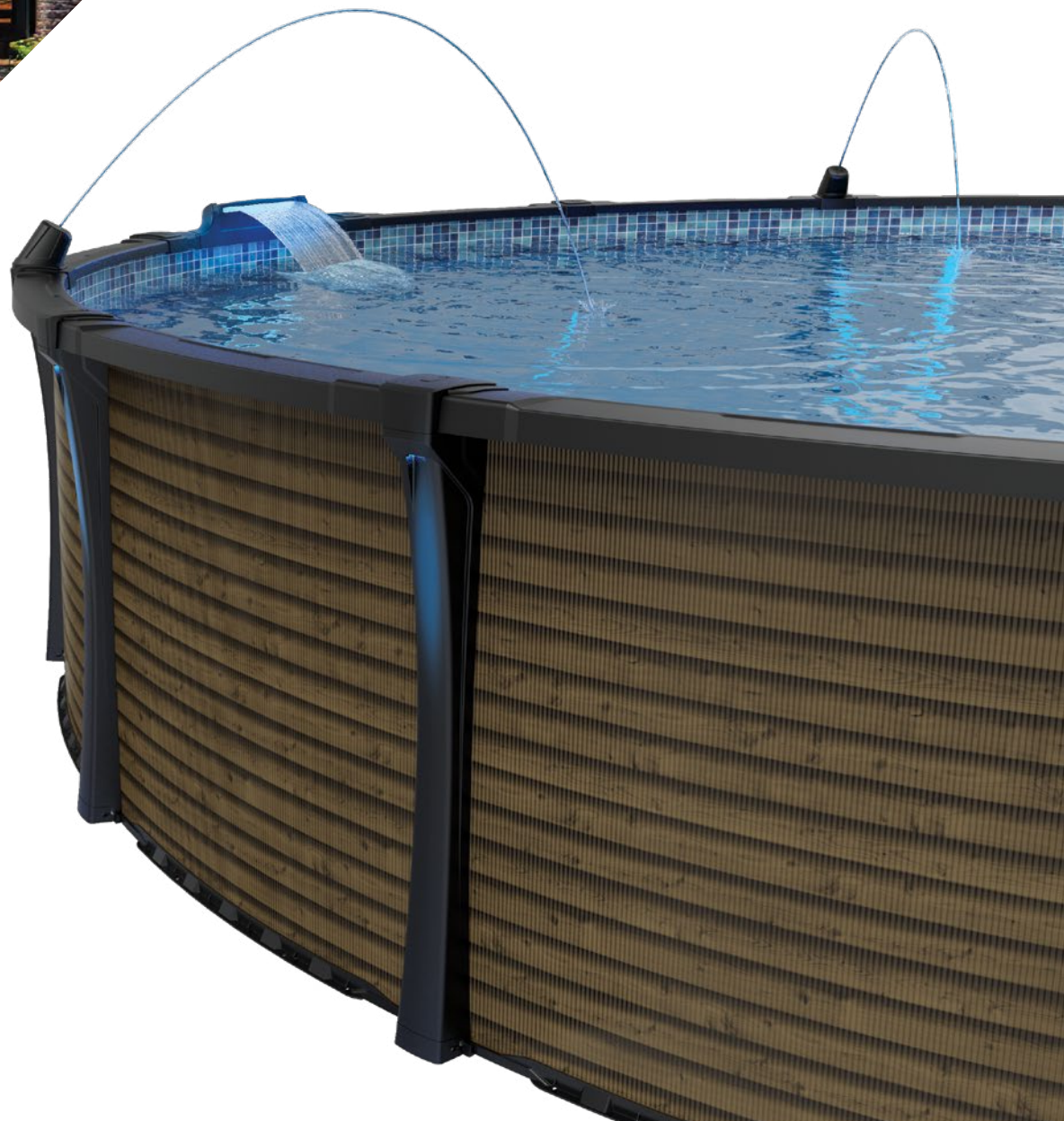




EQUINOX™

MADERA



VISIT OUR WEBSITE

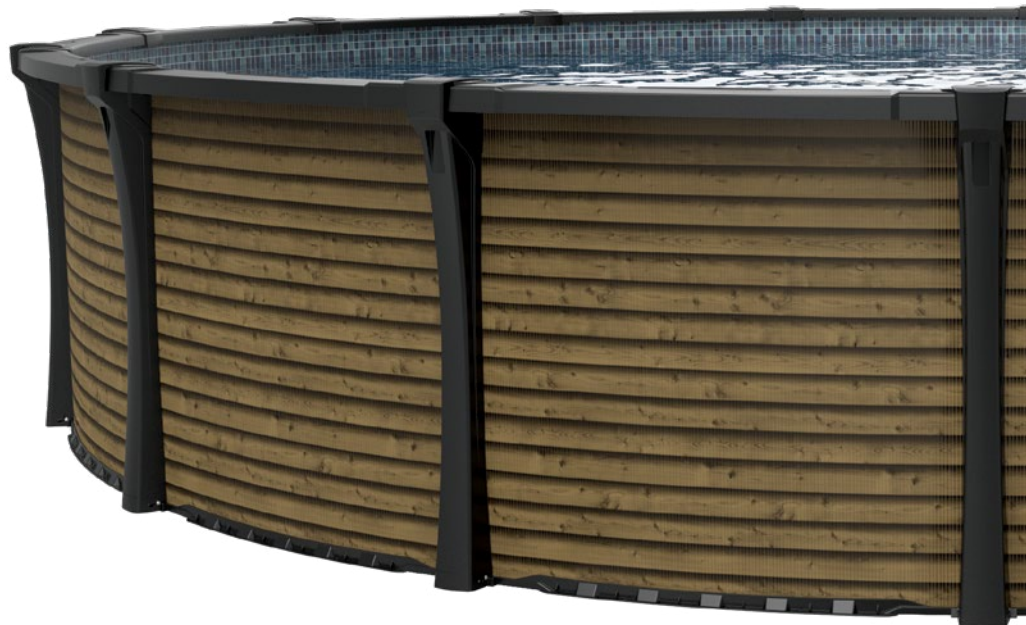


MADERA

PLATINUM SERIES

Due to its rich shades of wood in amber tones, its fine clean lines and its robust and reliable design, the **MADERA** will transform your backyard into a sanctuary that will stand out during your summer seasons.

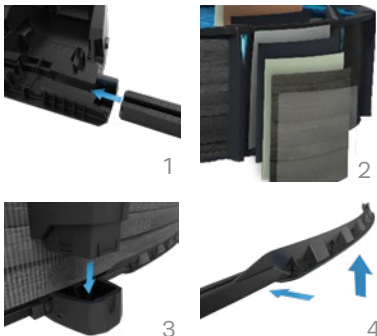
Carvin® distinguishes itself by being the only above-ground pool manufacturer to certify every pool with ICC-ES. Designed to comply with ANSI/PHTA/ICC- 4 standards.



EQUINOX™

BY CARVIN®

POOL FEATURES



1. Graduated Rails
2. Pool Wall Protection
3. Snap In Uprights
4. Stable and High Wall Rails

SPECIFICATIONS

Height - 52" Steel
Ledges - 6.5"
Uprights - 6"

POOL DIMENSIONS

ROUND

12', 15', 18', 21', 24', 27', 30', 33'

OVAL

12' x 15', 12' x 18', 12' x 21', 12' x 24'
15' x 21', 15' x 24', 15' x 30'
18' x 33', 18' x 39'