



**Blueville  
Nursery, Inc.**  
*Complete Landscape Service*

**"Beautifying your neighborhood  
one yard at a time since 1933"**

**[www.bluevillenursery.com](http://www.bluevillenursery.com)**

**Store Hours**

**Monday-Saturday:  
8 a.m.-5 p.m.**

4539 Anderson Ave  
Manhattan KS 66503  
Garden Store 785-539-2217  
Landscape Office 785-539-2671

**Blueville Nursery Garden Store was established in the spring of 1970 as an extension of our full landscape services. We have been providing Manhattan and the surrounding areas with quality annuals, nursery stock and gardening supplies ever since. Open year round with an assortment of products to match each season.**



**With over 50 years of experience, Blueville prides itself on creating personal relationships and greeting every customer with a friendly smile. Our top notch customer service has resulted in life long customers from generation to generation.**

**"I love spring anywhere, but if I could choose I would always greet it in a garden" - Ruth Stout**

**March 2026**

**Garden Store Newsletter**

**Katie's Korner**



***Katie's work in the industry began in 2002. Her degrees were completed at KSU in Business Marketing and Horticulture – Landscape Design by 2009. Katie came to Blueville in January of 2017 and is now the Garden Store Manager and Division Head.***

---

Saturday, March 7<sup>th</sup> at 10 a.m. KSU Horticulture and Turfgrass Specialist Dr. Ross Braun discussed Top Tips for Healthy Lawns at Blueville. He is also the manager of the Rocky Ford Turfgrass Research Facility.

The afternoon of March 7<sup>th</sup> from 1-3 p.m. we had Houseplant Repotting if customers had called in and reserved a time slot. Watch for those periodically throughout the year. Call the store to make other arrangements.

The weekend of April 13<sup>th</sup> and 14<sup>th</sup> Foxfarm products with soils and fertilizers were 15% off.

Pansy Palooza started early this year due to the warm temperatures and blooming plants. It ran from Friday, April 13<sup>th</sup> to Saturday, April 21<sup>st</sup>.

The first day of Spring this year was Friday, March 20<sup>th</sup> on the calendar.

Due to the KSU Spring Break Schedule, Spring Open House will be March 27<sup>th</sup> and 28<sup>th</sup> this year at Blueville Nursery Garden Store!

A Spring Container Building Workshop will be on Saturday, March 28<sup>th</sup> at 2 p.m. with sign-up to reserve a spot in advance. Call 785-539-2217 to participate.

KSU Entomologist Dr. Cloyd would like registration for his Summer Honeybee and Beekeeping Course to wrap up March 31<sup>st</sup>. Call into the store asap to reserve a spot at 785-539-2217. It will be a six module course during June, July and August at Blueville. \$100 per attendee. It is geared towards all levels of Honeybee and Beekeeping information and discussion for attendees. Let's make this a success for Dr. Cloyd with this new offering in Horticulture!

Saturday, April 11<sup>th</sup> 10 a.m. will be the next scheduled seminar at Blueville covering "Helping Birds through the Summer" with local bird expert, Chuck Otte. Free to attend.

April 17-18<sup>th</sup> will be the yearly Geranium Sale at Blueville supporting breast cancer awareness and research.

April 20-25<sup>th</sup> will be Arbor Day Tree Sale Week at Blueville. Wednesday, April 22<sup>nd</sup> is Earth Day. Friday, April 24<sup>th</sup> is Arbor Day on the calendar.

Saturday, April 25<sup>th</sup> KSU Gardens will be holding the Run for Roses event from 9 a.m. – 11:30 a.m. Contact KSU Gardens for more information. Look for Blueville at the event.

## Five Step Lawn Program- Time for Step #1



### DO-IT-YOURSELF LAWN PROGRAM Save 15% when you purchase multiple steps!

Details below

Choose either the main 3 steps or include all 5 options.

All items must be purchased at the same time for discounts to apply. Customer must take items at time of purchase. All sizes of product apply.



Feb 15– April 15

Prevents annual weeds & some broadleaf weeds while simultaneously fertilizing your lawn



May 15– June 15

Provides long lasting, even source of nutrients all summer. Excellent source of sulfur & iron.



Aug 15– Sept 15

Rejuvenate your lawn and maintain a thick, rich turf carpet.



Mid October

Controls broadleaf weeds such as dandelions along with a good fall feeding for the lawn.



Nov 15–December

Enhances spring "green up". This is the most important step of your lawn fertilizer program.

Ask about additional items for lawn pest control.

## Crabgrass Prevention Time



The first step of the five step lawn program starts with crabgrass preventer, that needs to be put down early spring if you are not doing any seeding work on your lawn. This product keeps crabgrass from germinating. We have two product choices. **Ferti-lome All Seasons with Fertilizer or Hi-Yield Turf & Ornamental Weed & Grass Stopper with Dimension** would be the one without fertilizer. Make sure to get off to a good start this year in lawn care with these products. It will help reduce frustrations later in the year. Other pre-emergent products people use would be Howard Johnson or Crew. Wet down to activate immediately.

*Did you know putting down a pre-emergent early spring can help prevent sandburs later in the year? The link below gives a little more information:*

<https://hnr.k-state.edu/extension/horticulture-resource-center/common-pest-problems/documents/Grassy Sandbur - Stickers.pdf>

Link on general weed control in lawns:

<https://www.bookstore.ksre.ksu.edu/pubs/mf2385.pdf>

## Why do we use ferti-lome Weed Free Zone?

If you are not doing any seeding work this spring, and broadleaf weeds are coming back in the lawn, **Ferti-lome Weed Free Zone** is a contact weed killer to spray on



broadleaf weeds, that are up in the yard. It only works on visible weeds. It is only meant for well-established lawn areas. Do not get drift on plant material. It is important to use the Weed Free Zone in the spring and fall because it has good cool weather performance unlike the other products of similar nature.

## Spring Lawn Seeding



If you are wanting to plant cool season grass seed this spring, it usually happens late March or early April, as soon as the ground warms up. It will depend on what the weather is doing. When it starts to warm up you will need to jump in, and get it done so it comes up before summer weather arrives. If you are going to do spring seeding you will need to keep pre-emergent out of the area because it will keep grass seed from germinating. If **Ferti-lome Weed-Free Zone** is sprayed across the area, the label says a person has to wait two weeks before seeding. Once you put down your grass seed, even and consistent moisture is important as it is germinating. New grass seed needs two to three mowings off of it before you can do anything else over that area besides **Ferti-lome New Lawn Starter Fertilizer**. Call or stop by the store with questions, so we can talk about what you are wanting to do to your yard this year, and the steps to go about doing it. Fall is the best time for seeding cool season lawns if you have flexibility in when you can seed.

Sod orders are being taken now for pre-order and pre-payment. Orders are organized for end-of-month pick-up or delivery. Sod rolls are 9SF and fescue. Call the garden store for more information: 785-539-2217.

## fertilome Systemic Insect Drench Applications



This product is a good one to apply in the spring to help protect trees from bug problems. It is only meant for trees that are non-edibles, so do not use it on fruit trees or fruiting plants from which you may be harvesting produce and eating. For most trees and shrubs, it is a one-time application that lasts a year unless you have a really big tree. The label walks you through exactly how to apply it to your trees and shrubs. People concerned about borers infesting plant material may use this as a preventative treatment. If a tree or shrub already has a borer in it, this product will only slow down activity to prolong the life of the plant. It will not be able to get rid of it. As Emerald Ash Borer continues to be a topic of discussion - this product would be something to keep in mind.

## Oak Itch Mite

Start the season off by applying tree banding gum around the trunk of trees if you have had issues with this pest in the past. We have some tree banding gum in the store if you want to try it. <https://www.bookstore.ksre.ksu.edu/pubs/MF2806.pdf>

## Spring Clean-Ups. A General DIY Process

March is typically the time to jump in and get your landscape beds cleaned up for the upcoming season. Cut ornamental grasses to the ground because the whole top is dead, and the new grasses come up from the bottom. Cut back dead perennial debris so the new plant comes up from the base. Spring flowering shrubs wait to trim until after they are done flowering so you don't cut off the flowers. Summer flowering shrubs trim early spring. For example, shrub roses get trimmed back harder in the spring and then let go to bloom through the summer with minimal trimming. Same with spirea, trimming back harder in the spring and just shaping during the summer months. Evergreen shrubs timing is less critical for when to trim them because you are not cutting off flowers.

Remove excess leaf debris in landscape beds. If there are any weeds sprouting in the beds, remove them. Apply weed preventer to open areas of the landscape beds if you know there will be no plants being added to those areas. Using weed preventer in open areas will help make the maintenance easier for you throughout the season. Weed preventer will need to be reapplied a couple times through the year to keep it strong. The product to use in landscape beds would be the **Hi-Yield Turf & Ornamental Weed & Grass Stopper with Dimension or Crew**. These do not have vegetable garden labeling. We also have **Preen** or **Treflan**. **Preen** and **Treflan** have some vegetable garden labeling depending on where you want to apply them. Check the label before applying it to areas for specific guidelines.

Take tree wrap off. Fertilize plant material with **Ferti-lome Tree & Shrub food** in the spring to feed plants. It helps overall health and vigor. Other fertilizers to consider would be **Ferti-lome Gardener's Special, Ferti-lome Rose Food, Fertilome Premium Bedding Plant Food or our Natural Guard line**. When spring bulbs start popping up, fertilize them with **Hi-Yield Dutch Bulb Food**.



Once finished with the plant, weed and leaf clean-up in the beds, finish your clean-up work by topdressing the landscape beds with mulch. It can be loaded on a truck, trailer or in five gallon buckets, that you bring. We also have a number of mulches for sale in bags to give you other choices including: **Cypress, All Bark Cedar, Bark Chips in three sizes, Red Mulch and Dark Brown Mulch**. Price breaks kick in when you buy six bags of one of these mulches.

We have a variety of hand tools to help you with clean-up work including several choices of hand pruners, hand saws, loppers, grass shears, pole pruners/saws, and rakes.

Fix landscape edging if it is broken, cracked, or sunken, or if it is natural and needs to be re-done. We offer steel edging at the store in 20' lengths for a high quality product.

In addition, as container season is starting with cool season annuals, clean out pots and switch out ½ to ¾ of the old potting soil in the containers with fresh media. We have lots of potting soil choices to cover the job.

## Deliveries

The garden store has a delivery service available for bulk product, bagged goods and plant material. Deliveries must be set up in the store so a person sees the product they are asking to have delivered and views a sample. Delivery fees apply and are charged per trip. Call the store for pricing and questions. Deliveries must be paid for before the material leaves the garden store. During the busy seasons' deliveries will have to be scheduled out and cannot be guaranteed to happen the same day it is set-up.

## Tree Planting Services

If you purchase a tree at the garden store you can arrange to have a crew plant it for you with a labor installation charge on top of the cost of the tree. This is meant to be a simple, straight-forward service, so it needs to be a clean site, and you just want someone to come out and install this tree for you without other obstacles.

## Vegetable Gardening Calendar

March is the beginning of the planting season for vegetable gardens outside when referring to the KSU Vegetable Garden Calendar. Weather plays into it, but it provides some standard expectations. It is a super helpful resource. Mid-month in March: **Broccoli, Lettuce, Potatoes, Radish, Peas and Turnips typically get started. Towards the end of the month Beets, Cabbage, Endive, Cauliflower, Onions, Onion Sets, Spinach go in next leading into April.** We have seed available in the store. Cool season vegetable crop plants are starting to arrive, as well. We carry copies of the **Kansas Garden Guide** at the store for sale. It is full of interesting and helpful information. The **KSU Vegetable Garden Calendar** is also available online: <https://bookstore.ksre.ksu.edu/pubs/mf315.pdf>

## Potatoes & Onions



We have yellow, white and red potato choices. In addition to seed potatoes we have blue potatoes and fingerling potatoes while supply lasts. We will also have a Russet potato this year. Here are a couple of resources from K-State to give you a lot more information on successful potato gardening: <https://www.bookstore.ksre.ksu.edu/pubs/MF488.pdf>

Onion sets, onion plants, shallots are available in the store. Onion sets will be in red, white and yellow. Onion plants - we brought in all the kinds this year. Here is a resource from K-State to help with onion gardening:

<https://hnr.k-state.edu/doc/hort-tips/vegetables/Onions.pdf>

## Asparagus, Rhubarb & Strawberries

Asparagus is plentiful this year. We have all the varieties in now to include: Purple Passion, Jersey Hybrid, Martha Washington, Millenium. Rhubarb is the variety Canada Red bare-root, and strawberries right now are bare-root with Ozark Beauty while supply lasts. Now is the only time of year to grab those items if you want to add them to your yard. We will have more rhubarb and strawberry plants, as soon as they are rooted, and also coming in from additional suppliers.

Asparagus info: <https://bookstore.ksre.ksu.edu/pubs/mf319.pdf>

Rhubarb info: <https://bookstore.ksre.ksu.edu/pubs/ep99.pdf>

Strawberry info: <https://bookstore.ksre.ksu.edu/pubs/mf598.pdf>

## Tyler's Tips



*Tyler is a 2017 graduate of Kansas State University with a degree in Agricultural Education. He has been working in the plant industry since 2012 and at Blueville since 2014. His main interests are houseplants and annuals. He currently serves as the assistant manager at the garden store.*

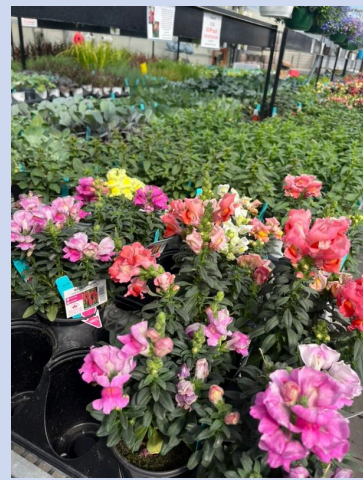
### Spring has Sprung!



Spring has sprung at Blueville Nursery! Spring is always an exciting time for gardeners, as we get to break out of the cold, dark gloom of winter and experience the warming weather and beautiful blooms of spring. Mother Nature once again shows signs of life everywhere we look creating smiles amongst us. Spring is also an exciting time as we start to roll out new product that came in during the winter. We spend time during the fall trying to find new and exciting items to bring into the store, and spring is the time those items appear. Make sure to stop in and check out all of our new product!

### Cool Season Annuals

One of the first things to arrive that lets us know spring is here, are cool season annuals. These are annuals that tolerate the cooler weather in March and April and give us early pops of color. Some examples would be pansies, nemesia and ornamental kale/cabbage. These typically are replaced with more heat tolerant annuals come May.



## Pottery.

Spring is also an exciting time for pottery. Early spring, a new selection of trendy pottery arrives at the store. This ranges from smaller houseplant sized pottery, to large, ceramic outdoor pottery. We also re-stock on popular items such as terracotta pottery that runs out late season. Once your terrarium is created, care is relatively easy. If you created an enclosed terrarium, there should be no additional care necessary. Add some water once planted, and once enclosed, it should create its own environment. If you created an open terrarium, water lightly as it dries out. Since there is no drainage, be cautious not to over water. Misting with a spray bottle daily is also highly encouraged. If your terrarium was created with succulents, very minimal watering is needed and no misting necessary. Provide your terrarium with bright light and keep away from drafts or heating vents.



# Plants with Interest







## What To Do

- Plant trees & shrubs
- Treat ornamental pear trees with fertilome Fire Blight Spray when they first start to bloom
- Plant vegetable gardens with potatoes, asparagus, rhubarb and onion sets from the garden store
- Mow turf grass low to clean up dormant blades and promote spring green-up
- Clean up and mulch perennial beds
- Begin controlling broadleaf weeds in your lawn
- Prune back spirea & ornamental grasses
- Apply fertilome Tree & Shrub Food to trees & shrubs
- Apply fertilome Tree & Shrub Systemic Insect Drench to trees & shrubs for year-long protection
- Remove tree wrap from tree trunks
- Use cool season annual flowers to add color to containers and landscape beds
- Apply fertilome For All Seasons II Lawn Food Plus Crabgrass & Weed Preventer



## What's New

- Vegetable & Flower Seeds
- Houseplants products
- Hand tools
- Annuals, veggies & herbs
- Trees, shrubs & perennials
- Potatoes

ENJOY  
15% OFF

**One regular priced  
fertilome Gardener's  
Special 4 lb**

**Cannot be combine with any other  
coupons or discounts  
Present coupon to cashier or  
mention it at time of purchase**

**Expires April 4th, 2026**



*Blueville's  
Horticulture  
Hints*  
**on KMAN 1350am  
Fridays @ 10AM**

## Honeybee & Beekeeping Modules

Module 1: Introduction to Course

June 13th: 10-12 p.m.

Module 2: Honeybee Keeping Basics

June 27th: 10-12 p.m.

Module 3: Swarming & Overwintering

July 11th: 10-12 p.m.

Module 4: Supering & Requeening

July 25th: 10-12 p.m.

Module 5: Mites, Insects & Diseases

August 8th: 10-12 p.m.

Module 6: Honey Extraction

August 22nd: 10-12 p.m.

## Honeybee & Beekeeping Course

K-State Entomologist

Dr. Raymond Cloyd

6 Module Course

\$100 Fee to Register

Register with Blueville Nursery  
by March 31, 2026

Completion of all 6 modules  
earns certificate of completion



## 2026 Milford Lake Bird Walks

Walks meet at 8 a.m. on the south end of the Milford Lake Dam (across the road from the Corps of Engineers Milford Lake Project Office, 5203 North K-57 Junction City, Kansas.)

The walks last 2 to 3 hours and we explore areas around or near Milford Lake.

Walks are led by Chuck Otte - he can be contacted at [cotte@ksu.edu](mailto:cotte@ksu.edu). Bring your binoculars, your bird book, comfortable walking shoes and a sense of humor!

Birders of all ages and stages are welcome! Schedule is tentative - you may want to check in with Chuck a few days ahead to make sure it hasn't had to be changed.

- o March 21st
- o April 18th
- o May 9th
- o June 20th
- o July 18th
- o August 15th
- o September 19th
- o October 24th
- o November 21st

# K-State Gardens

Title sponsor

**Community**  
NATIONAL BANK



**5K run  
1K walk**

**April 25, 2026  
9-11:30 a.m.**

*America's 250th*

[k-state.edu/rose-run](http://k-state.edu/rose-run)



# BECOME A MANHATTAN COMMUNITY GARDENER



**Our Community Gardens provide:  
water & hoses, hand & power tools  
mulch & compost, advice & Community**



You provide for your own plot:  
Donated time, such as a 2-hour workday,  
an actively managed garden plot, seeds & plants



**SIGN UP AT  
UFM Community Learning Center,  
1221 Thurston, Manhattan**

**Plots are limited!**



**Cost is income-based, \$15-\$50\* per  
plot (depends on plot size) with a  
one-time \$10-\$20 deposit**  
\*income based reduced fees available

**MORE INFORMATION IS  
AVAILABLE AT  
[WWW.TRYUFM.ORG](http://WWW.TRYUFM.ORG);  
[785-539-8763](tel:785-539-8763)**



**[Blueville Nursery](#)**

**Phone:** 785-539-2217

**Address:** 4539 Anderson Ave,  
Manhattan, KS 66503

**Website:** [bluevillennursery.com](http://bluevillennursery.com)

**Connect with us**



**Sign up for  
monthly  
newsletter  
and weekly  
updates here**

Blueville Nursery | 4539 Anderson Ave | Manhattan, KS 66503-9799 US

[Unsubscribe](#) | [Update Profile](#) | [Constant Contact Data Notice](#)



Try email marketing for free today!