



# Ah-h-h!

**Feel the sensation of relaxation and sore muscles being soothed by warm, swirling water in your own backyard getaway!**

Some of life's best experiences are simple and easy! What can be simpler than placing your new spa on a flat, supportive surface, filling it with a garden hose and plugging in the attached cord to any standard outlet?

Cove Spas bring stress free enjoyment by being manufactured with you, the consumer, in mind! All Cove Spas are manufactured with the highest quality components and manufactured in the USA, with over 20 years of experience.

## Cove Offers Four Plug & Play Hot Tub Models.

Our Plug & Play models are fully equipped with a 1.0hp pump which pumps a powerful 155 gallons per minute! We also include additional Cove Wrap™ insulation to ensure heat retention in your hot tub.



### C110

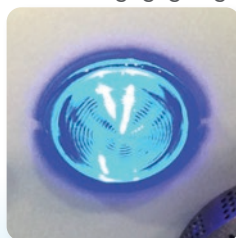


- 13 Jets
- Standard Lighting
- Ozone System
- Cove Wrap™ Insulation
- 78.5" x 31"
- 110v "Plug & Play" (GFCI Cord Included)
- 1 HP, 2 Speed Pump, 155 GPM
- 266 Gallons
- Dry Weight 270 lbs.

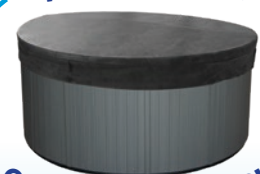
Cove Wrap™ insulation



Color changing lighting



**All Cove  
spas Hot Tubs**



**come with a cover**



## C410



14 Jets

Standard Lighting

Ozone System

Cove Wrap™ Insulation

78.5" x 35"

110v "Plug & Play"  
(GFCI Cord Included)

1 HP, 2 Speed Pump,  
155 GPM

280 Gallons

Dry Weight 280 lbs.



## C310



12 Jets

Standard Lighting

Ozone System

Cove Wrap™ Insulation

62" x 84" x 34"

110v "Plug & Play"  
(GFCI Cord Included)

1 HP, 2 Speed Pump,  
155 GPM

240 Gallons

Dry Weight 416 lbs.



## C510



12 Jets

Standard Lighting

Ozone System

Cove Wrap™ Insulation

70" x 80" x 34"

110v "Plug & Play"  
(GFCI Cord Included)

1 HP, 2 Speed Pump,  
155 GPM

250 Gallons

Dry Weight 395 lbs.





***Cove has a hot tub for everyone!***

**The standard line of Cove Hot Tubs comes with a 4 KW heater, Ozonator, and Deluxe LED light package.**

Cove's 4 KW inline heater provides fast and convenient heating and recovery time for those cold climates, where enjoying your hot tub is the best way to spend time in the great outdoors.

The Deluxe LED light package includes outside cabinet lighting along with more vibrant inside LED lighting to set the mood for relaxing and the relief of stress by the use of chromo therapy. Square sided models include an adjustable LED waterfall to help enhance your relaxation time.

The standard Corona Discharge Ozonator provides peace of mind and a reduction of hot tub sanitizers used by approximately 40% over the life of the hot tub.

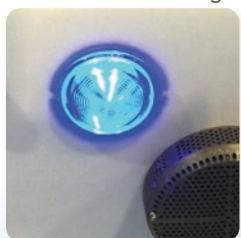


**C220LED**

- 20 Jets
- LED Lighting
- Ozone System
- 78.5" x 35"
- 220v/110v
- 2 HP, 2 Speed Pump, 180 GPM
- 280 Gallons
- Dry Weight 335 lbs.

**LIGHTING PACKAGES**

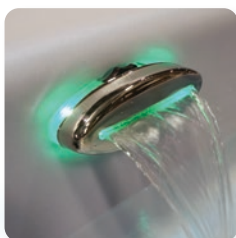
Footwell / Side Wall Light



Sconce Lighting



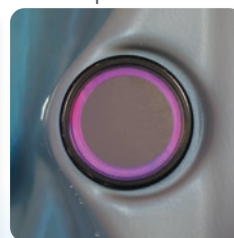
Waterfall



Jet Lighting



Cup Holders



ROUND TUB PACKAGE

SQUARE/RECTANGULAR PACKAGE

## DID YOU KNOW?

Our C220LED and C500LED models can be converted to 110v. A 20amp GFVI cord needs to be purchased.



### C500LED

23 Jets  
LED Lighting  
Ozone System  
70" x 80" x 34"  
220v/110v  
2 HP, 2 Speed Pump,  
180 GPM  
250 Gallons  
Dry Weight 395 lbs.

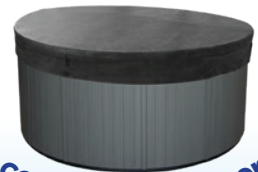


### C850LED

46 Jets  
LED Lighting  
Ozone System  
84" x 96" x 36"  
240v  
(1) 2 HP, 2 Speed Pump,  
(1) 3 HP, 2 Speed Pump,  
430 GPM  
373 Gallons  
Dry Weight 625 lbs.



All Cove  
Spas Hot Tubs



come with a cover



# Cove Spas are your personal luxury hot tub!



## **THE COVE DIFFERENCE**

Quality and affordable luxury are the cornerstones of Cove Spas. With a Cove Spa you will have peace of mind as you relax and soak, knowing your hot tub is built with the highest quality components and made in America. Relieve your aches and pains, unwind at the end of a long day, and spend quality time with your loved ones. Cove Spas are your entry into a slice of heaven!

## **COVE SHELL**

All Cove Spas feature HDPE (High Density Polyethylene), the most indestructible shell material available in a hot tub. Vacuum formed HDPE material is also extremely durable and resistant to chemical damage, delaminating, and cracking. This durability makes it the product of choice for discriminating buyers with value in mind. It's also the easiest shell material to care for in the industry! Cove Spas can effortlessly be cleaned with some basic household cleaners (simple green, glass cleaner, or vinegar and water), along with a soft cloth, a soft bristled plastic brush, or even a magic eraser.

## **COVE FRAME**

All framing is pressure treated and "stacked" or overlapped to ensure stability at every joint and corner, giving it the longevity and durability you would expect in a quality, American made hot tub. High-end furniture companies use the same fasteners and adhesives we use in the framing of every Cove Spa.

## **COVE CABINET AND BASE**

Our cabinets are designed to last! They are comprised of a unique resin product (similar to PVC) which ensures years of beauty. A fully sealed, HDPE solid floor is the standard foundation for every Cove Spa.

## **COVE PLUMBING AND COMPONENTS**

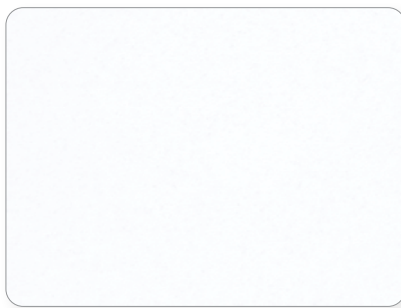
Enjoy the ability to customize your massage with a 2-speed pump, air controls and adjustable jets. All water jet fittings are glued, barbed and clamped, providing three layers of leak prevention! Every Cove Spa is water tested twice which includes testing the pump and heater!

## **COVE WARRANTY**

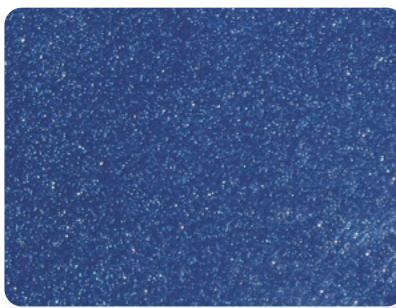
With Cove's Lifetime Limited Shell Warranty, plus a 3-Year Parts and Labor Warranty on equipment, you will feel confident for years to come with your beautiful new Cove Spa!

- Limited Lifetime Shell Warranty
- Three Year Parts & Labor Warranty
- Standard Ozone Sanitation System
- 2lb. Density Foam Insulation
- Permawood® Cabinet
- Digital Spa Controls
- Easy to Operate
- High Reliability

### PERMA SHELL COLORS



White

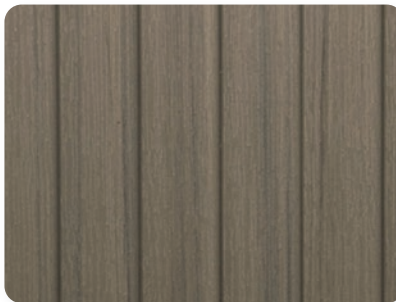


Starlight Blue

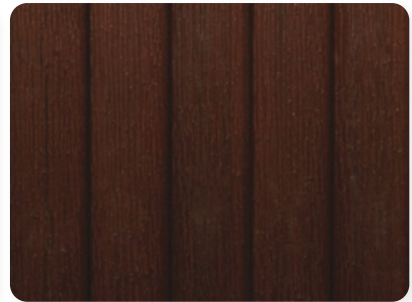
### CABINET COLORS



Black Permawood™



Charcoal Permawood™



Mahogany Permawood™

### OPTIONAL FEATURE



Stainless Steel Banding

The manufacturer reserves the right to change product selections and/or make product modification.

Color samples shown here are representations of actual color, but are for identification only. Because the color may vary, there is no guarantee that this color will be an exact match to the image shown



Your Authorized Cove Spa Dealer



Printed in the USA