



Welcome to



Count on CRUM for...

- Quality Fixtures
- Formed Hose Tooling
- OEM Custom Machinery
- Robotic Integration
- Engineering & Design
- Tube & Pipe Forming
- CMM Dimensional Inspection

About CRUM

Our location in Northwest Ohio is convenient to railroads, trucking companies as well as the airport.



Our Facility



40,000 sq. ft warehouse with room to expand

List of Equipment

S/20T Haas Lathe

S/30T Haas Lathe with Bar Feeder

DS 30Y Haas Lathes with Bar Feeder (2)

SR-32 **Star** CNC Lathes (3)

VF-5/50XT Haas CNC Mill

VMC 5020AHT CNC Fadal Mill

VMC 15 **CNC** Fadal Mill

VMC 2216RT CNC Fadal Mill

VMA15RT CNC Fadal Mill

1050-40 CNC Tree Mill

List of Equipment cont'd.

Fagor DMS Twin Table CNC Router

Portable Infinite Cimcore Romer CMM

Fixed Brown and Sharpe CMM

KMT Automatic CNC Saw

KMT Manual Band Saw

Pedrick Production Bender

VB300 CNC Tube Bender (2)

CRUM Equipment



VMC 2216RT CNC Fadal Mill

VF-5/50XT Haas CNC Mill



CRUM Equipment cont'd.



Fagor DMS Twin Table CNC Router



1050-40 CNC Tree Mill



Fixed Brown&Sharpe CMM and
Infinite Cimcore Romer CMM

CRUM Equipment cont'd.



DS 30Y Haas Lathes with Bar Feeder



SR-32 Star CNC Lathe

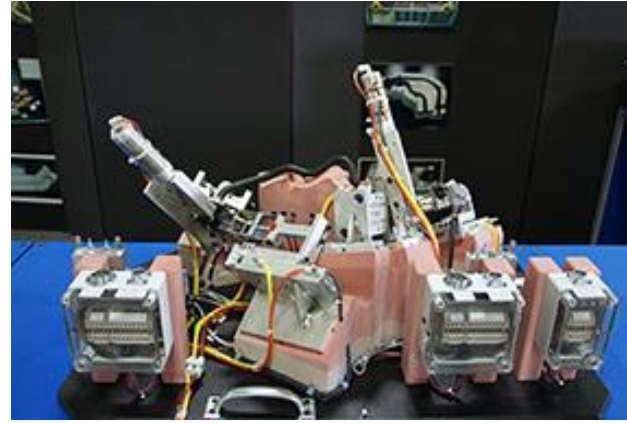
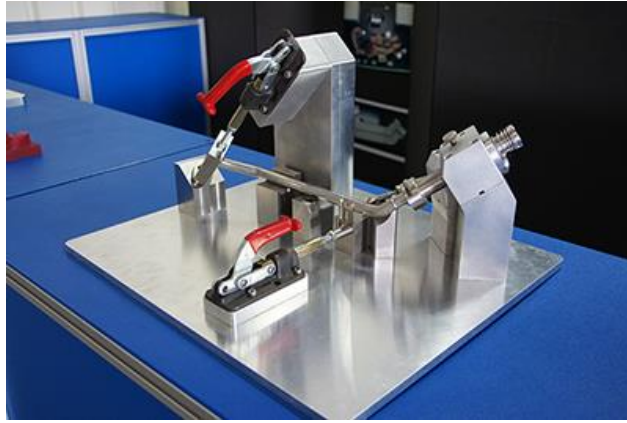
Quality Control Gages

- Metal Gages
- Pin & Bushing
- Trim/Stamp
- Assembly Check
- GD&T

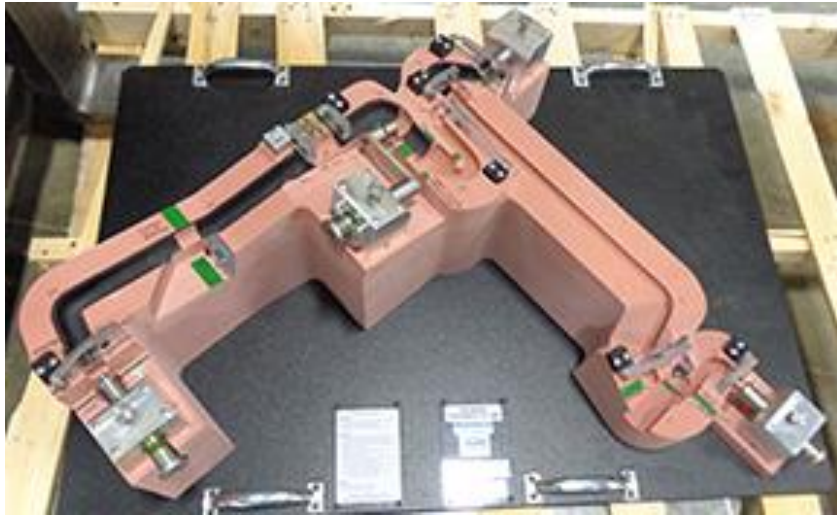
Quality Control Gages cont'd.



Quality Control Gages cont'd.



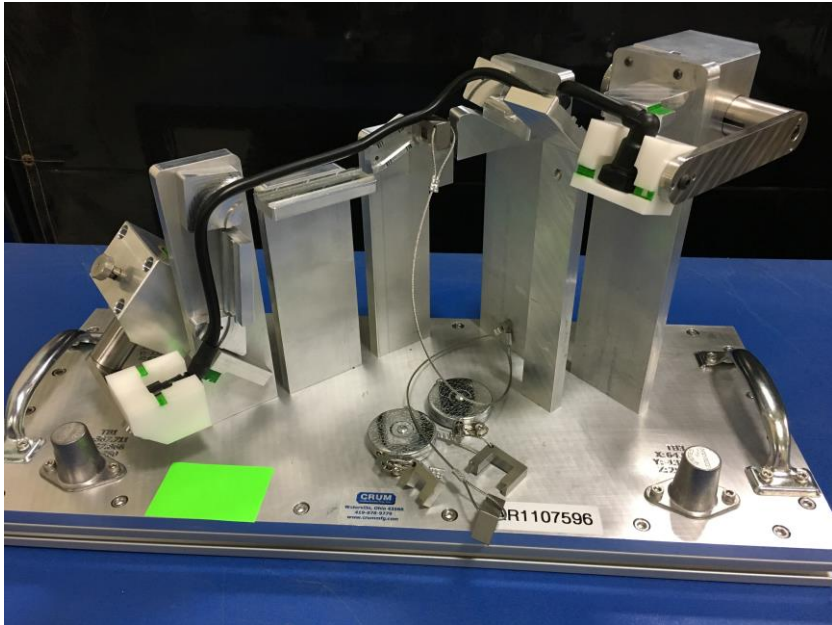
Quality Control Gages cont'd.



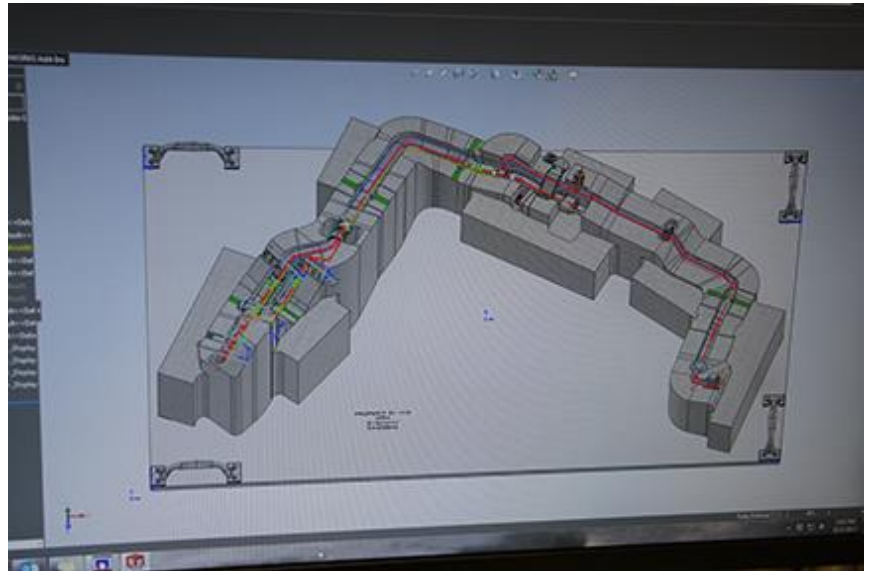
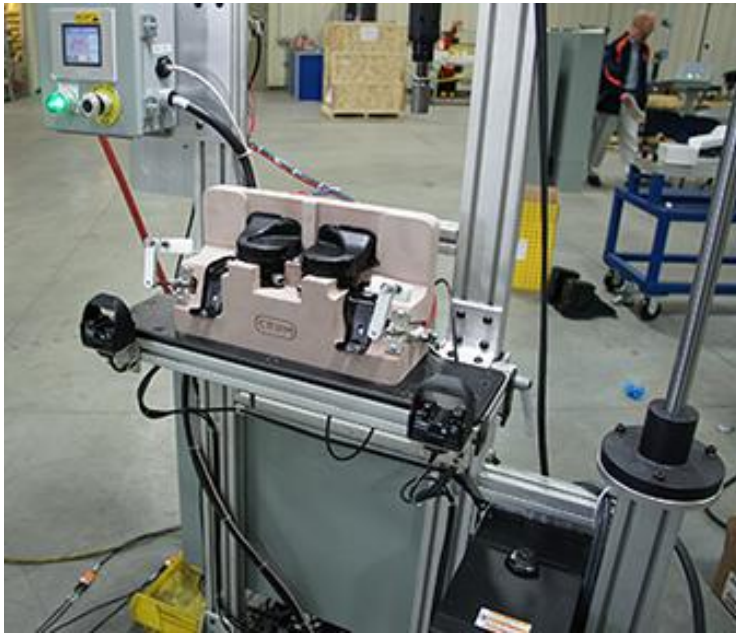
Quality Control Gages cont'd.



Quality Control Gages cont'd.



Quality Control Gages cont'd.

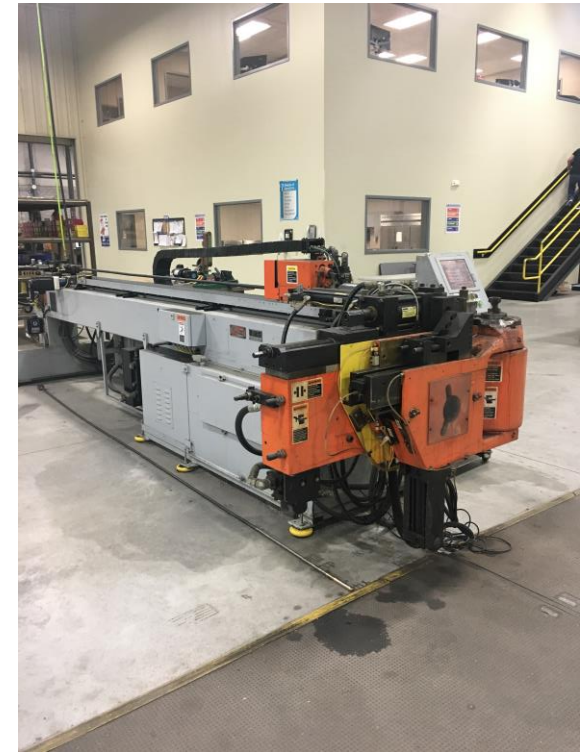


Formed Tube and Pipe

Machine bend up
to 3" tube with
.187 wall

Manually bend up
to 1.5" Stainless
Steel and up to
2.5" Aluminum

Crum Designs all
tooling for bending
in house!

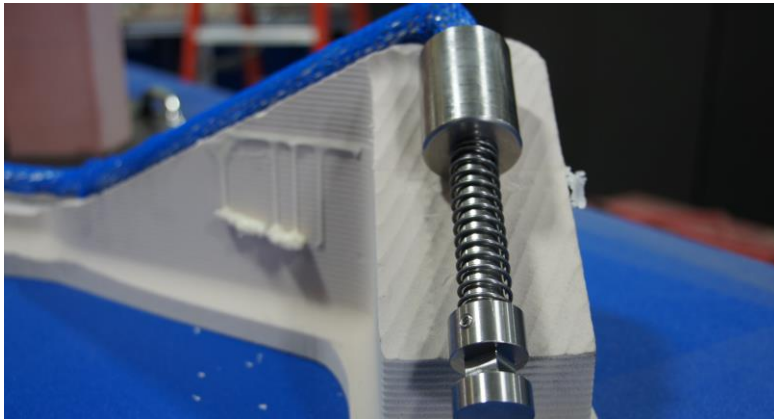


Formed Hose Tooling



Crum is capable of **building formed hose tooling from:**

- 0.125 inch to over 8 inches in diameter
- 17- 4 Heat Treat
- Aluminum
- 303 Stainless Steel



About CRUM cont'd.

ISO 9001 Registered Firm



 SAI GLOBAL

ISO 9001

Quality

Why CRUM?

Our production capability is approximately \$700,000 per month.

We are **ready** to start on your project!

Aaron Waldie

Sales Manager

Office: (419) 878-9779 Mobile: (419) 461-0922

awaldie@crummfg.com

www.crummfg.com

