

THE FINLEY II

5 BEDROOM - 3 1/2 BATH - 4,789 SQUARE FEET



Our Finley Model is a two story home that has 3,654 sq. ft. above ground with 1,135 of basement finished with a full walk out. The Finley features 5 bedrooms with a first floor master, 3.5 bathrooms, 1st floor office/flex room, and a large 2nd floor bonus room. The exterior boasts a 3 car fully insulated and drywalled garage, 20' grand entry, covered wrap around front porch, fully composite deck w/ screened in covered porch, concrete driveway, and patio on a full exposure half-acre partially wooded lot with view of the golf course.

The details incorporated in The Finley are abundant starting at the entry and covered porch with custom wood ceilings. Moving into the homes 20' grand entry & stairwell with custom niches. A quick turn to the right is the office/flex room with custom wainscoting and vaulted ceiling. The open concept first floor showcases a luxury kitchen with built in appliances, customer cabinetry, custom electrical/lighting, and massive walk in pantry. The living room showcases tray ceiling, huge windows overlooking the golf course and woods, a fireplace with natural stone, built in mantels, and lighting. The patio door just off the dining area leads you to the covered screened porch on the large composite deck. The first floor coming in from the garage has a large mud room area with drop zone, custom lockers, half bath, and laundry room. Lastly, on the first floor we have the master suite with tray ceilings, his and hers walk in closets, his and hers sinks with a spacious walk in custom tile shower.

Moving to the second floor there are 3 full bedrooms with oversized closets, an expansive bonus room fully finished, and a Jack and Jill bathroom with double vanities and tile floors.

As you make your way into to the basement you will find an open concept basement featuring a full wet bar with full-size refrigerator, custom built waterfall bar top made from butcher block, a custom stone washed wall with a 85" tv with matching stone cubbies flanking the theater area to neatly store audio equipment. A 5th bedroom and third full bath along with two spacious storage areas completes the interior.

W185 S8095 Racine Ave
Muskego WI 53150



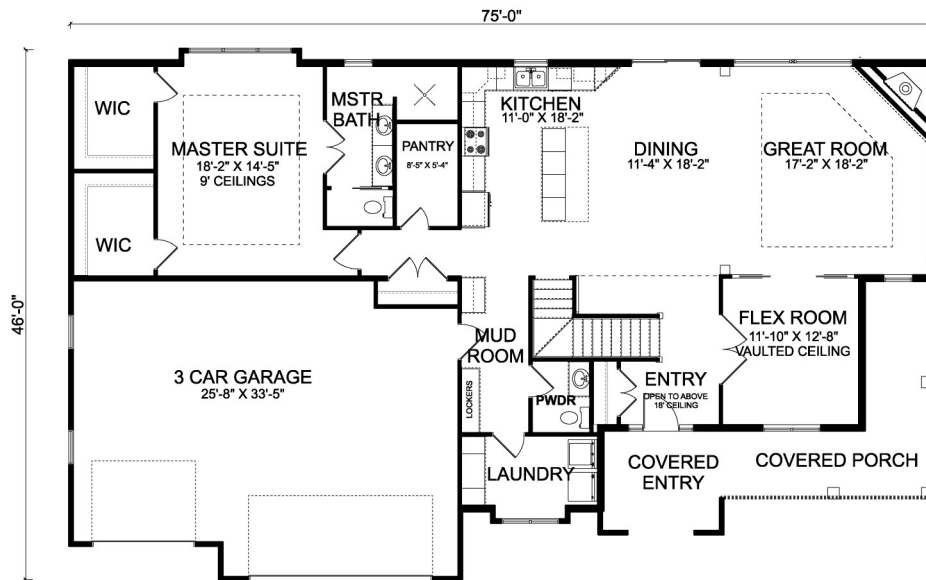
BURBACK BUILDERS

Phone: 262-679-5154
burbackbuilders.com



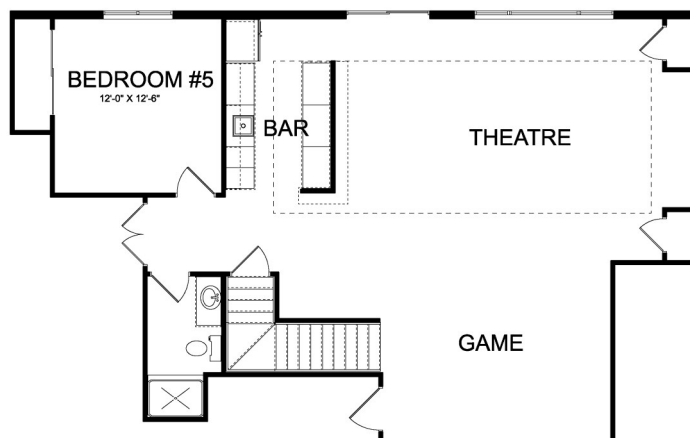
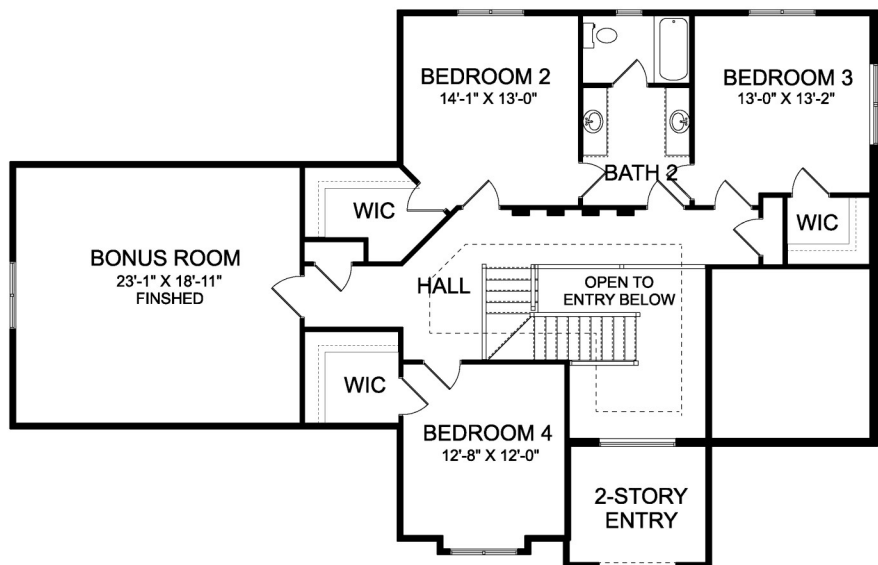
THE FINLEY II

5 BEDROOM - 3 1/2 BATH - 4,789 SQUARE FEET



Main Floor - 1995 sqft

Second Floor - 1184 sqft
Bonus room - 463qft



Finished Lower Level - 1135 sqft