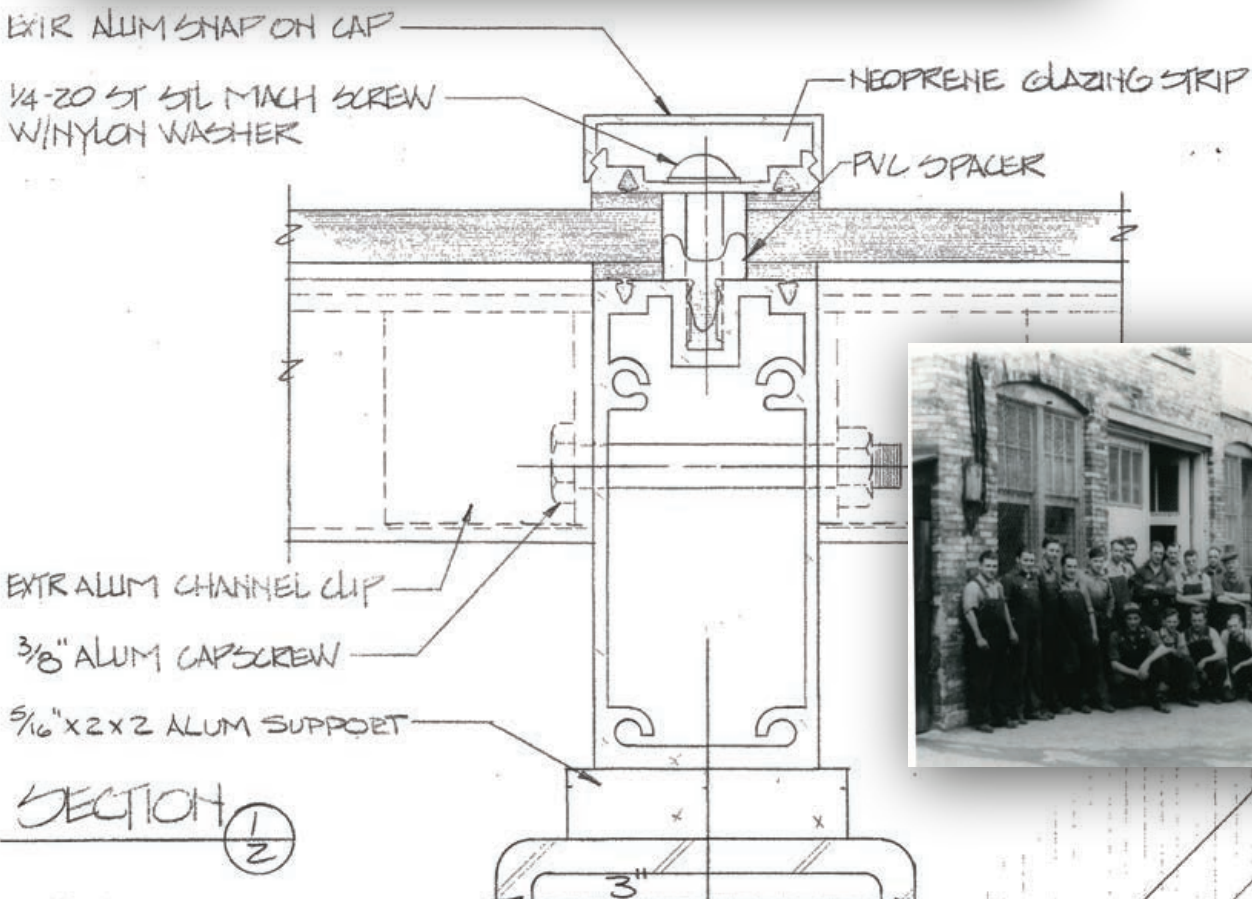




**SUPER SKY**

# Super Sky History





Founded in 1923, Super Sky Products Enterprises, LLC (Super Sky) traces its roots to nearly a century of manufacturing experience in architectural metal products. In 1929, the company formally established its skylight division, marking a pivotal step toward specializing in engineered daylighting systems for commercial buildings.

Over the decades, Super Sky evolved alongside advancements in building science, expanding from traditional skylight fabrication into custom, performance-driven architectural glazing systems. Continued investment in engineering, precision metal fabrication, and quality control positioned the company to support increasingly complex commercial projects.

Through the early 2000s and beyond, manufacturing capabilities and production capacity were expanded to meet worldwide demand, reinforcing its reputation as a trusted partner for architects seeking structurally sound, code-compliant, and design-flexible daylighting solutions.

Today, Super Sky's legacy reflects a blend of long-standing craftsmanship and modern engineering—delivering custom skylights and glazed systems that balance aesthetics, durability, and performance.

# Who We Are

Super Sky is innovative in its approach to designing, manufacturing, and installing its skylights system. From the conceptual planning stage to final installation, Super Sky is the preeminent “single-source” skylight manufacturer.

Super Sky provides design assistance and expertise on projects ranging from basic designs to complex engineered systems. Investment in high-tech equipment provides precision manufacturing, ensures customer satisfaction, and on-time delivery schedules.



*Brown County Library - Green Bay, WI  
Architect: Frye Gillian Molinaro*



*Mitchell International Airport - Milwaukee, WI  
Architect: Engberg Anderson*



*Milwaukee Art Museum - Milwaukee, WI  
Architect: Santiago Calatrava Architects*



- Aluminum Framed Glass
- Point Supported Glazing (PSG)
- Hurricane / Impact Rated
- Blast Engineered
- Photovoltaic (BIPV)
- Dynamic Glass (Photochromic)
- Specialty Accessories
- Repair/Renovation of any Existing Skylight

## What We Offer

# Glass



*Arrowhead Pharmaceutical - Verona, WI  
Architect: Eppstein Uhen Architects*



**Restaurant 42 - Verona, WI**  
**Architect: Cunningham Group Architecture, Inc.**



**King's Cross - Verona, WI**  
**Architect: Cunningham Group Architecture, Inc.**

With the successful completion of over 11,000 projects worldwide, Super Sky is a leader in commercial and residential skylights. We stand by our mission statement:

*“To stand regarded by architects, consultants, contractors and developers as the industry leader in designing, manufacturing and installing the highest quality and most innovative commercial sky lighting. Super Sky is dedicated to maintaining our pristine reputation for providing the finest commercial and residential skylight systems.”*



*Associated Bank, River Center - Milwaukee, WI*  
*Architect: Rinka Chung Architecture*

Super Sky's structural systems utilize tubular extrusions. Framing is available in a variety shapes and sizes to ensure each project's aesthetic and structural requirements are fulfilled.

Super Sky's standard glazing system consists of retainers and snap-on caps that attach and secure the glass to the sloping rafters. To prohibit water infiltration at the horizontal points, a high-performance flush glazed "wet seal" is applied; to ensure water tightness.



*Maryland Plaza - St. Louis, MO*  
*Architect: Klitzing Welsch Associates*



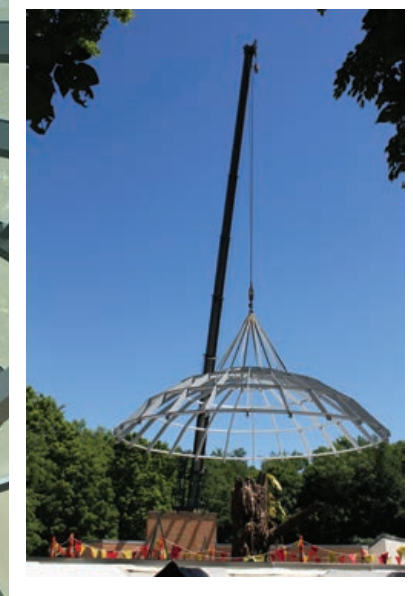
*The Malt House Apartments - Milwaukee, WI*  
*Architect: Goldenholz & Associates Architects & Planners*



**Legacy Hotel - Green Bay, WI**  
**Architect: Eppstein Uhen Architects**



*University of Michigan, Memorial Phoenix Lab - Ann Arbor, MI  
Architect: Lord Aeck Sargent Architecture*



*Kalamazoo Nature Center - Kalamazoo, MI*  
*Architect: Byce & Associates, Inc.*



*Bradley Symphony Center - Milwaukee, WI*  
*Architect: Kahler Slater*



*Michigan Central Station - Detroit, MI  
Architect: Quinn Evans Architects*

Super Sky's fabrication facility includes state of the art technology along with experienced craftsmen. The high-performance machining centers utilize 5-axis technology. CNC automation centers enable technicians to cut and prepare skylight components to precise dimensions. Laser welding provides accurate manufacturing and superior visual quality.

To validate and confirm the superior workmanship, a manufacturer's warranty on materials, glass, construction, and installation is furnished for every project.



*Milwaukee Tool - Milwaukee, WI  
Architect: Stephen Perry Smith Architects, Inc.*



*Aventura Mall - Aventura, FL  
Architect: JPRA Architects*



*NVIDIA Endeavor - Santa Clara, CA  
Architect: Gensler*

# Dynamic Glass



*Scheels - Chandler, AZ  
Architect: R.L. Engebretson Architects AZ, LLC*

# Point Supported



*Domus Apartments - Philadelphia, PA  
Architect: Design Collective*



Point Supported Glass (PSG) systems offer a reduction of visible barriers by eliminating the need for additional support framing to capture the glass. Precision fabricated glass, which is fitted with stainless steel spiders and rotules, can be designed to complement any building entrance or facade. A variety of attachment orientations are available to meet design needs.

*Homewood Suites - Milwaukee, WI*  
*Architect: Kahler Slater*



*Hotel Blackhawk - Davenport, IA*  
*Architect: SP Architects*

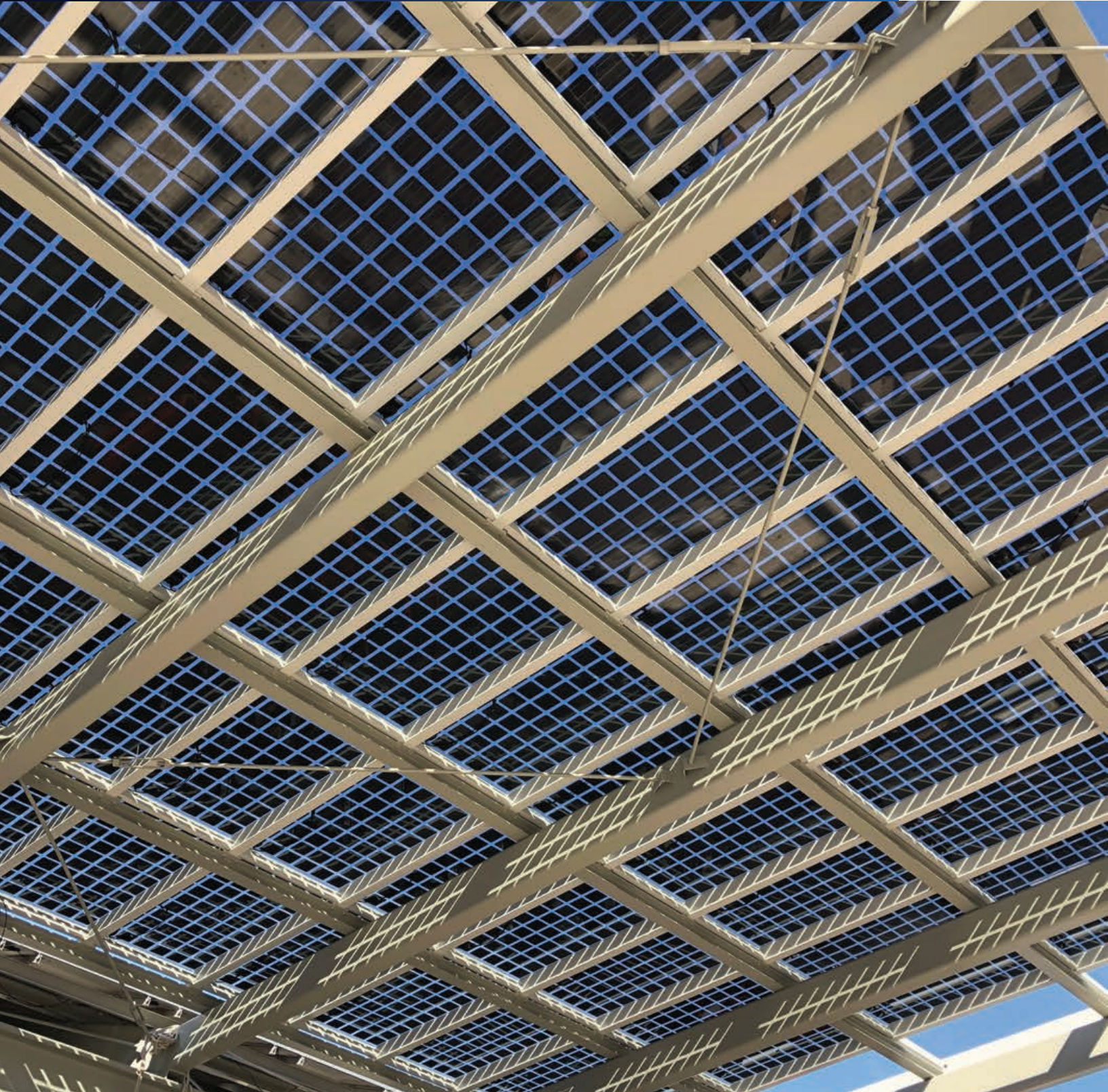


*Creative Artists Agency - Los Angeles, CA  
Architect: Bjarke Ingels Group*



*Hilton Hotel - Columbus, OH  
Architect: HOK Group*

# Photovoltaic



*McDonald's Corporation, Sunnyside Up - Bay Lake, FL  
Architect: CPH Corporation*



Building Integrated Photovoltaic (BIPV) systems consist of integrating photovoltaic modules into a skylight system. While simultaneously serving as a building envelope material and power generator, BIPV systems can provide savings in electrical costs, reduce use of fossil fuels and emission of ozone depleting gases, and add architectural aesthetics to any building.

Super Sky provides design and geometry possibilities for BIPV systems; including but not limited to, single slope, ridge, pyramid, canopy, and walkway sky lighting.

*Austin City Hall - Austin, TX*  
*Architect: Cotera, Kocar Negrete, & Reed*



*Patriot Place - Foxborough, NJ*  
*Architect: DLR Group*

# Specialty Accessories

- Cladding
- Decorative finials
- Gutters
- Insulated metal panels
- Louvers
- Operable vents
- Snow guards
- Sunscreens
- Trellises



*Los Angeles Int'l Airport - Los Angeles, CA  
Architect: Fentress Architects*



*Downtown Summerlin - Las Vegas, NV  
Architect: Altoon Partners, LLP*



*Private Residence - Naples, FL  
Architect: Charles T. Leonardi*



*Luther Midelfort - Eau Claire, WI  
Architect: Ellerbe-Becket Architects*



*Maui Arts and Cultural Center - Kahului, Maui, HI  
Architect: John Hara Associates, Inc.*

# Repair & Renovation



*Plankinton Arcade - Milwaukee, WI  
Architect: The Kubala Washatko Architects, Inc.*



*(Before)*

**Comercia - Auburn Hills, MI**  
**Self-Performed by Super Sky**



*(After)*

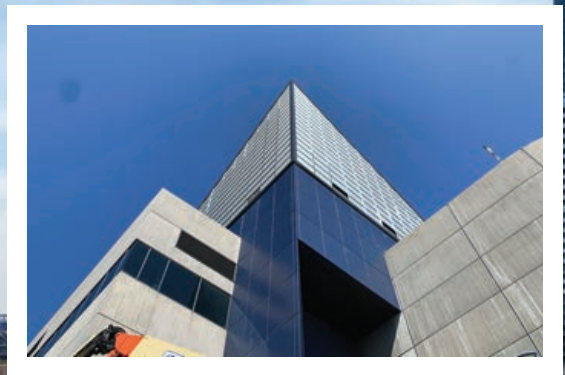
Super Sky provides skylight renovation, repair, and replacement services designed to preserve design intent, improve building performance, and extend system life of our product and that of our competition. Our experienced field technicians understand the technical, aesthetic, and code-driven considerations that matter most to architects and building owners alike.

Every project begins with a comprehensive on-site inspection and condition assessment conducted by a Super Sky specialist. You receive a clear evaluation of existing conditions, performance risks, and practical recommendations—allowing you to make informed decisions that balance budget, longevity, and compliance.



*(Before)*

Super Sky received the **Craftsmanship Award** from the Building Congress & Exchange for the skylight renovation work at the National Aquarium - Rain Forest Exhibit.



*(After)*

*National Aquarium, Rainforest - Baltimore, MD  
Architect: Design Collective*



*Dayton Arcade - Dayton, OH*  
*Architect: Sandvick Architects*

## Repair & Renovation services include:

- Repair - Targeted solutions to extend the life of your existing system
- Re-caulk - Restore system integrity with precision resealing
- Re-glaze - Upgrade glass for enhanced performance
- Replace - Required when existing systems are beyond repair



*(Before)*



*(After)*



***Your  
trusted partner  
for Repairs &  
Renovations***

**Old Post Office Hotel - Washington, DC  
Architect: WDG Architecture, PLLC**



*(Before)*

Super Sky's professional technicians complete every renovation project on time and within budget. We combine premium materials, expert craftsmanship, and responsive service to protect your investment and extend the life of your skylight system.



*(After)*



*GRAEF Engineering - Milwaukee, WI*  
*Architect: The Kubala Washatko Architects, Inc.*

*Don't let a failing  
skylight compromise  
your building's  
performance.  
Contact Super Sky  
today!*





## Super Sky Products Enterprises, LLC

10301 N. Enterprise Drive Mequon, WI 53092  
800.558.0467 262.242.2000 Fax 262.242.7409  
[www.supersky.com](http://www.supersky.com)