

2026 Product Catalog



C&S
WOODWORKING
Quality Lawn Furniture since 1990

Pure Comfort...
Absolute Quality

2026



Family-owned & -operated since 1990, and currently operating in Central Wisconsin, *we enjoy what we do!*

We started by using treated yellow pine, oak, and cedar. Now, we only build our furniture using high-quality poly lumber.

We strive to do our best in helping you with your yard, patio, and sun room furnishings, so you can enjoy style & comfort year after year.

Thank you for choosing
C&S Woodworking
for your outdoor living dreams!

*From the team at **C&S Woodworking***

Quality

We are committed to quality, selecting superior materials, using skilled workmanship, and maintaining the same level of consistency as we have since 1990.

Our products will withstand the greatest test of all... time.

100% Satisfaction

Our goal is to meet your expectations. We stand behind all our products.

If you are not completely satisfied with your purchase, take it back to the place of purchase, and we will make it right.



Custom Designs

Need a custom-designed piece to fit your patio? Just ask!
We will do our best to meet your need.

Materials

We only select high-quality Poly Lumber (HDPE). Made from recycled materials, it is completely recyclable. All of our scrap goes back into lumber, which goes back into chairs.

Fasteners

We use all stainless steel fasteners - from bolts to screws to swing chain - for long life and attractive appearance.

Swivels

High-precision, heavy-duty ball bearings, with a totally enclosed center hub, and all exposed parts, are stainless steel. This is by far the smoothest swivel we have ever used.

Glider Brackets

For a smooth ride and a long life on your glider, we only use all-stainless steel ball bearing brackets.

Tables

Our tables are designed to prevent sagging from expansion and contraction due to cold and heat. In addition, we add a welded aluminum frame for extra strength and durability.

MADE WITH
TANGENT[®]
SUSTAINABLE LUMBER



DURABLE

Our products will not splinter, crack, chip, peel or rot and are impervious to insects.



LOW-MAINTENANCE

No painting, staining, or waterproofing required.



COLOR STABLE

Rich colors stay brilliant thanks to built-in UV protection.

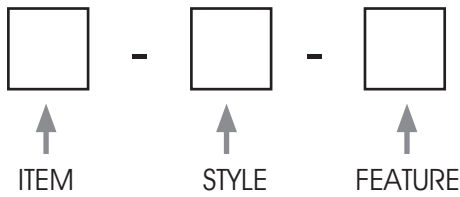


EASY TO CLEAN

Do not stain or accumulate dirt and are easily cleaned with soap and water.

Selecting Your Poly Furniture...

Item # Key



Example: G5 - FB - CS



Choose your Furniture Piece...

AC = Adirondack Chair	PC = Pub Chair
ACF = Adirondack Chair (Folding)	PT = Picnic Table
B = Bench	S5 = 5' Swing
ET = End Table	BS = Stool (Bar)
G2 = 2' Glider	DS = Stool (Dining)
G4 = 4' Glider	PS = Stool (Pub)
G5 = 5' Glider	TAT = Tete-a-Tete
GPC = Gliding Pub Chair	TT = Table (Traditional)

Choose your Style...

STYLE KEY
CL - Colonial
BB - Barrel Back
FB - Fan Back
FT - Flat Top
CB - Comfort Back



BB



CL



FB

FEATURES
CS - Console
CH - Cup Holders



CB



FT

Now, let's add some color!

Choose your Color Tones...



S = Solid
 2T = 2-Tone
 2TT = 2-Tone Tint
 (2 back slats are the base color)
 2TS = 2-Tone Shaded
 (Same as 2TT, except seat board & front seat slats are same as base color.)

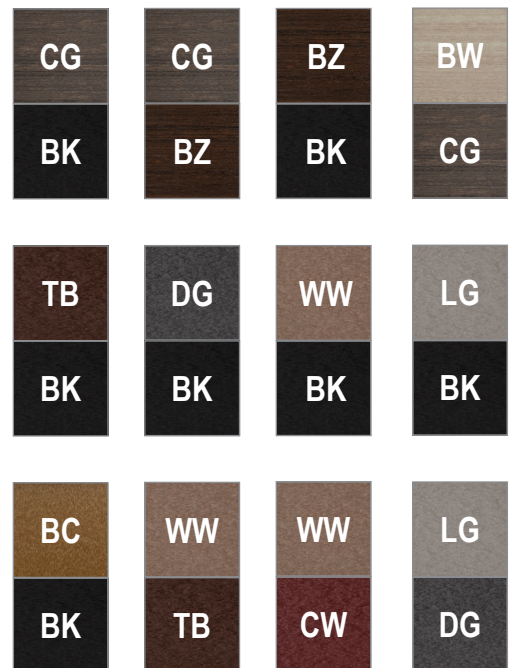
Choose your Color Scheme. Mix & match any color of your choice.

POLY COLORS AVAILABLE

Standard	Premium	Woodgrain
BL - Blue	TL - Tropical Lime Green	DR - Driftwood Gray
CR - Cardinal Red	BR - Bright Red	AM - Antique Mahogany
DG - Dark Gray	PK - Pink	BW - Birch Wood
WW - Weathered Wood	BO - Bright Orange	CG - Coastal Gray
TB - Tudor Brown	LY - Lemon Yellow	BZ - Brazilian Walnut
TG - Turf Green	WH - White	
BC - Bright Cedar	AB - Aruba Blue	
LG - Light Gray	PB - Powder Blue	
BK - Black	BP - Bright Purple	
CW - Cherry Wood		
PT - Patriot Blue		

MADE WITH **TANGENT** SUSTAINABLE LUMBER

A few of our most popular combinations...



Example:

Top Color →

Base Color →





Neck Pillows

- Fits all fan backs
- Stocking 6 colors
- Ask about custom colors. (Extra charges apply.)
- Strap allows pillow to fit over back slats. (Pillows can be sold separately.)



01-19 Jacket



08-84 Mink



08-82 Chesnut



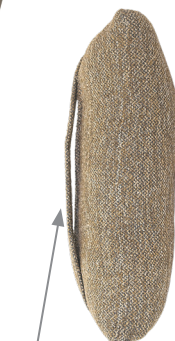
01-10 Umbrella



01-14 Emo



08-88 Domino



Pillow showing strap.

2' Gliders (G2) & Gliding Pub Chairs (GPC)

- Styles available: BB, FB
- Choose from 18", 24", or 30" seat heights



Gliders

Item: G2 - BB

Color: DG - LG (2T)

Size: 28"W x 39"D x 37"H



End Table

Item: ET - 16

Color: DG - LG (2T)

Size: 16"W x 20-1/2"D x 21-1/2"H



Glider Chair

Item: G2 - FB

Color: BK - CG (2T)

Size: 28"W x 33"D x 43"H



QUICK SHIP Item
in 5 color combinations

LG	WW	DG	AM	CG
DG	TB	BK	BK	BK



Gliding Pub Chairs

Item: GPC - FB - 24

Color: BK - CG (2TT)

Size: 28"W x 39"D x 50-1/2"H

End Table

Item: ET - 27

Color: BK - CG (2TS)

Size: 16"W x 26"D x 27"H



Gliding Pub Chairs

Item: GPC - FB - 30

Color: BZ - CG (2TT)

Size: 28"W x 39"D x 56-1/2"H

End Table

Item: ET - 30

Color: BZ - CG (2TS)

Size: 16"W x 24"D x 33"H



Swivel Gliders (GS)

- Styles available: BB, FB
- Choose from 18" to 24" seat heights



QUICK SHIP Item
in 5 color combinations

LG	WW	DG	AM	CG
DG	TB	BK	BK	BK



Swivel Glider
Chairs (2)
Item: GS - FB
Color: BK - BW (2TT)
Size: 28"W x 33"D
x 43"H

End Table
Item: ET - 16
Color: BK - BW (2TT)
Size: 16"W x 18-1/2"D
x 21-1/2"H



QUICK SHIP Item
in 5 color combinations

LG	WW	DG	AM	CG
DG	TB	BK	BK	BK



Swivel Glider (24" h)
Item: GS - FB - 24 - FRX
Color: BK - CG
Size: 33"W x 40"D
x 50"H

End Table
Item: ET - 27
Color: BK - CG
Size: 16"W x 26"D
x 27"H



Extension Inset (FRX)

Inset showing
Footrest Extension
Item: FRX - 24

4' Gliders (G4) and 4' Benches (B4)

- Styles available: BB, CL, FB

4' Gliders now available in 24" height.



4' Glider
Item: G4 - FB
Color: WH - BZ (2T)
Size: 52"W x 33"D x 43"H



4' Glider
Item: G4 - FB - 24
Color: DG - LG (2TT)
Size: 52"W x 33"D x 50-1/2"H



4' Glider
Item: G4 - BB
Color: DG - CW (2T)
Size: 52"W x 28"D x 37"H

Park Benches Available in 4, 5', or 6' lengths

- Base color only available in Black.
- Choose from any of our colors for seat & back

NEW
2026



Item: PKB - 4
Color: BK - BZ



Side angle



Item: PKB - 5
Color: BK - CG



Item: PKB - 6
Color: BK - AM



5' Console Gliders (G5- -CS)

Also available as 5' Console Benches (B5)

- Styles available: FB, BB

5' Gliders now available in 24" height.

(console folded down)



5' Fanback Console Glider (24")

Item: G5 - FB - CS - 24

Color: BK - TB (2TT)

Size: 64"W x 33"D x 50-1/2"H



(console in up position)

(console folded down)



5' Fanback Console Glider

Item: G5 - FB - CS

Color: TB - WW (2TS)

Size: 64"W x 33"D x 43"H



(console in up position)

(console folded down)



5' Barrel Back Console Glider

Item: G5 - BB - CS

Color: TB - WW (2TT)

Size: 64"W x 29"D x 40"H



5' Fanback Console Bench

Item: B5 - FB - CS

Color: TB - DG (2TT)

Size: 64"W x 29"D x 43"H

(console folded down)

4' Swings (S4) with black A-frame

A-Frame sold separately.

- Styles available: BB, CL, FB
- Swing chain is all stainless steel
- Springs available; additional charges apply
- A-frame available in black aluminum

4' Swing A-Frame

Size: 72"W x 80"D x 84"H



Item: S4 - BB
Color: BK - WW (2TS)
Swing Size: 51"W x 28"D x 28"H



Item: S4 - FB
Color: BK - WW (2TS)
Swing Size: 51"W x 30"D x 32"H



Item: S4 - CL
Color: BK - WW (2TS)
Swing Size: 51"W x 28"D x 25"H



5' Swings (S5) with black A-frame

A-Frame sold separately.

- Styles available: FB, BB
- Swing chain is all stainless steel
- Springs available; additional charges apply

5' Swing A-Frame

Size: 84"W x 80"D x 84"H

(See below for assembly information.)



(console folded down)

Item: S5 - FB - CS
Color: BK - TB (2TS)
Swing Size: 64"W x 30"D x 32"H



(console in up position)



Swing A-Frame easily comes apart in 5 pieces, with 4 quick-attach bolts for ease of hauling.



Folding Adirondack Chairs (ACF)

- Styles available:
FB (Fanback) & FT (Flat Top)



NEW
2026

Item: ACF - FT - CH
Color: BK - BW - 2T
Size: 30"W x 34"D x 39"H



QUICK SHIP Item
in 5 color combinations

LG	WW	DG	AM	CG
DG	TB	BK	BK	BK

Item: ACF - FB - CH
Color: BK - CG - 2T
Size: 30"W x 34"D x 35"H



Item: ACF - FT - CH
Color: WA
Size: 30"W x 34"D x 39"H

NEW
2026

Adirondack Ottoman (AO)

Item: AO
Color: AM - BW (2T)
Size: 22"W x 22"D x 14-1/2"H



Childrens Adirondack Chairs

Item: ACC - FB
Color: TL
Size: 24"W x 26-1/2"D x 30"H





Lounge Chairs (LC)

- Available in all colors

NEW
2026

Lounge Chair

Item: LC - FB

Color: AB - WH (2TT)

Size: 85"L x 32-1/2"W x 42-1/2"H



Stationary Adirondack Chairs (ACS)

Flat Top Style!
32"W x 36"D x 39-1/2"H



Item: ACS - FT
Color: DG



Item: ACS - FT
Color: BK - BW - 2T



Item: ACS - FT
Color: BZ

Tete-a-Tete (TAT)

- Styles available: FB & BB
- Available in 18" h Dining Chair, 24" h Pub Chair, & 30" h Bar Chair
- Easy-release style table. No fasteners needed.



Item: TAT - FB - 18
Color: DG - AB (2TT)
Size: 80"W x 36"D x 45-1/2"H



Item: TAT - FB - 24
Color: WW - CW (2T)
Size: 80"W x 36"D x 51"H



Item: TAT - BB - 30
Color: BK - TB (2TT)
Size: 80"W x 36"D x 51"H



(Inset shows table in down position)



Table Sets - Colonial-Style & Comfort-Back Chairs

- All items on this page are Quick Ship



Table
Item: T - CL - 40 X 72 - 36"H



Bench
Item: B5B - CL - 24



Table
Item: T - CL - 44 x 44 - 36"H

QUICK SHIP Item
in 3 color combinations



Swivel Pub Chair
Item: PCS - CB - 24 - SP - ARMS



"Make it a complete set!"



40 X 72 Table with
4 Swivel Chairs & Bench
Item: T - CL - 40 X 72 (36"H)
Item: PCS - CB - 24 - SP - Arms
Item: B5B - CL - 24
Color: BK - CG (2TS)

Comfort Back Chairs

Experience the lumbar support!

Dining Chair (DC)18" fits.....30"H Tables
 Pub Chair (PC).....24" fits.....36"H Tables
 Bar Chair (BC).....30" fits.....42"H Tables

Available in 18", 24", & 30" h seat ht.
 Available in swivel & swivel rocker.
 Stationary only available in 18" & 24" ht.
 All chairs available as side chairs or with arms. *Please specify.*



Dining Chair
 Item: DC - CB - 18 - Side
 Item: DC - CB - 18 - Arms
 Color: BK - TB
 Size: 19-1/2"W x 25-1/2"D
 x 42-1/2"H
 With arms: 26-1/2"W



Dining Chair Swivel (18"h)
 Item: DCS - CB - 18 - Side
 Item: DCS - CB - 18 - Arms
 Color: BK - TB
 Size: 19-1/2"W x 24"D x 42"H
 With Arms: 26-1/2"W

Dining Chair Swivel with Spring (18"h)
 Item: DCS - CB - 18 - SP - Side
 Item: DCS - CB - 18 - SP - Arms
 Color: BK - TB
 Size: 19-1/2"W x 24"D x 42"H
 With Arms: 26-1/2"W

Comfort Back Chairs (cont'd)

- Also available in swivel only. (not pictured)



Pub Chair; 24" h
 Item: PC - CB - 24 - Side
 Item: PC - CB - 24 - Arms
 Color: BK - TB
 Size: 19-1/2"W x 28"D x 48"H
 With Arms: 26-1/2"W



Pub Chair with Flip-Up Arms; 24" h
 Item: PC - CB - 24 with flip-up arms
 Color: BK - TB
 Size: 19-1/2"W x 28"D x 48"H
 With Arms: 26-1/2"W



Swivel Pub Chair w/spring; 24" h
 Item: PCS - CB - 24 - SP - Arms
 Color: BK - TB
 Size: 19-1/2"W x 28"D x 48"H
 With Arms: 26-1/2"W



Swivel Bar Chair w/spring; 30" h
 Item: BCS - CB - 30 - SP - Arms
 Color: BZ - CG

Tables - Colonial-Style (T - CL)

- Standard Heights: 30", 36", 42"
- Ask about custom sizes.

Umbrella hole is standard;
please state on Order
Form if you do not want it.

Rectangular

Standard Sizes: 34 x 60, 40 x 60, 40 x 84
34 x 72, 40 x 72, 40 x 96



Item: T - CL - 40 x 72 (30"H)
Color: TB - WW (2TS)



Item: T - CL - 40 x 96 (30"H)
Color: BK - TB (2T)

Square

Standard Sizes: 28 x 28, 34 x 34, 40 x 40, 44 x 44, 48 x 48



Item: T - CL - 40 x 40 (36"H)
Color: LG - PT (2T)



Item: T - CL - 28 x 28 (30"H)
Color: WW - TB (2T)

Round

Standard Sizes: 40, 45, 60



Item: T - CL - 60 - R (42"H)
Color: TB - WW (2TS)



Item: T - CL - 40R (30"H)
Color: CW - DG (2TS)

Tables - Mission-Style (T - MS)

- Standard Heights: 30", 36"
- Ask about custom sizes.
- Mission only is available in Standard & Woodgrain.
- Colors: Mix & match

Rectangular

Standard Sizes: 34 x 60, 40 x 60, 40 x 96
34 x 72, 40 x 72

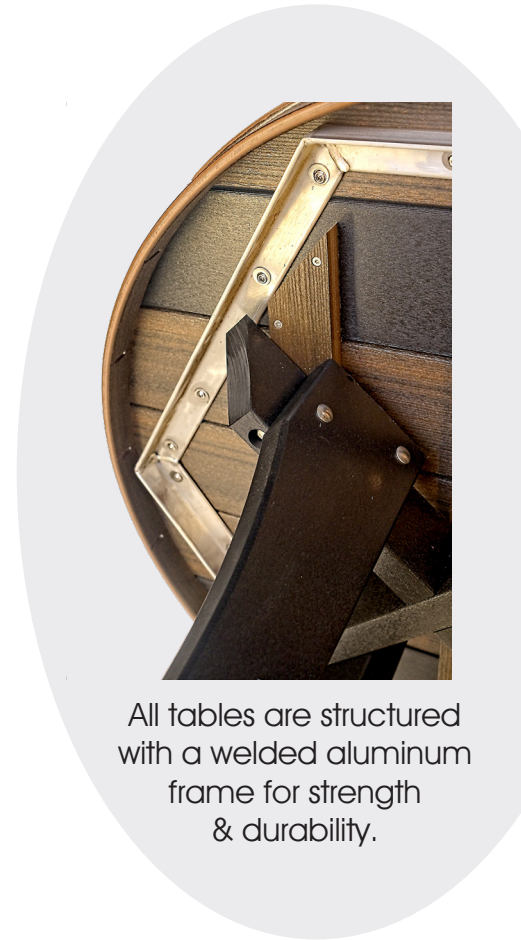


Umbrella hole is standard on the following sizes only:

34" x 60" 40" x 60"
34" x 72" 40" x 72"

Please state on Order Form if you do not want it.

Item: T - MS - 40 x 72 (30"H)
Color: DG - WW (2TS)



All tables are structured with a welded aluminum frame for strength & durability.

Round

Standard Sizes: 40 & 45



Umbrella hole unavailable.

Item: T - MS - 40 - R (30"H)
Color: BK - TB (2TS)

Square

Standard Sizes: 28 x 28, 34 x 34,
40 x 40, 44 x 44, 48 x 48



Umbrella hole unavailable.

Item: T - MS - 44 x 44 (36"H)
Color: BK - BC (2TS)

Chairs & Swivel Chairs

- Styles available: BB, FB

Dining Chair (DC)18" fits.....	30"H Tables
Pub Chair (PC)24" fits.....	36"H Tables
Bar Chair (BC)30" fits.....	42"H Tables

18" →



Dining Chair
 Item: DC - FB - 18
 Color: BK - AM (2T)
 Size: 28"W x 28"D
 x 45-1/2"H



Swivel Dining Chair
 Item: DCS - FB - 18
 Color: BK - AM (2T)
 Size: 28"W x 28"D
 x 45-1/2"H

24" →



Pub Chair
 Item: PC - BB - 24
 Color: TB - BW (2T)
 Size: 28"W x 30"D
 x 44-1/2"H



Swivel Pub Chair
 Item: PCS - BB - 24
 Color: PT - LG (2TS)
 Size: 28"W x 28"D
 x 44-1/2"H

30" →



Bar Chair
 Item: BC - FB - 30
 Color: DG - TG (2T)
 Size: 28"W x 30"D
 x 57-1/2"H



Swivel Bar Chair
 Item: BCS - FB - 30
 Color: BK - AM (2TS)
 Size: 28"W x 28"D
 x 57-1/2"H

Backless Benches

Custom lengths available; extra charges apply.

- Styles available: CL, MS, & T
- Standard lengths for all benches 2', 3', 4', 5', 6', 7', & 8'

For a bench item #, use B, then add the bench length, then add B.
Example: B5B = 5' Backless Bench.

Colonial-Style (B_B - CL - ___) (height)

All Colonial-Style Benches:
Seat width = 13"
Base width = 16"



18"H fits....30"H Tables
24"H fits....36"H Tables
30"H fits....42"H Tables

Item: B8B - CL - 18
Color: BK - TB (2T)



Item: B5B - CL - 18
Color: TB - WW (2TS)

Mission-Style (B_B - MS - ___) (height)

All Mission-Style Benches:
Seat width = 13"
Base width = 13"

18"H fits.....30"H Tables
24"H fits.....36"H Tables



Item: B5B - MS - 18
Color: DG - WW (2TS)

Traditional (B_B - T)

All Traditional-Style Benches:
Seat width = 13"
Base width = 14-3/4"

Available in 18"H only.

Item: B6B - T - 18
Color: TG - BC (2T)



Pub Stool Sets (PS - CL)

- Standard Heights: 30", 36", 42"
- Ask about custom sizes.



Round Table
with Pub Stools
Item: T - CL - 40 (36"H)
Item: PS - 24
Color: BK

(shown at right with stools conveniently tucked under the table)



Round Table with Fan Back Swivel Bar Chairs & Stools
Item: T - CL - 40 (42"H)
Item: BCS - FB - 30
Item: BS - 30
Color: PT - CG (2TS)

Stools Available 18"h, 24"h, 30"h



Dining Stool
Item: DS - 18
Color: BK - CW (2T)
Size: 16"x 16"x 18"H



Pub Stool
Item: PS - 24
Color: BK - AM (2T)
Size: 17-1/2"x 17-1/2" x 24"H



Bar Stool
Item: BS - 30
Color: PT - CG (2T)
Size: 17-1/2"x 17-1/2" x 30"H

Table Sets (T)



Rectangular Table
with Fan Back Swivel
Dining Chairs

Item: T - CL - 40 X 72 (30"H)

Item: DCS - FB - 18

Item: B5B - CL - 18

Color: BK - DG (2TS)



44" Square Table with Pub Chairs

Item: T - CL - 44 X 44 (36"H)

Item: PC - CB - 24 - Flip up arms

Color: BK - BW (2TS)



Round Table
with Barrel-Back
Swivel Bar Chairs

Item: T - CL - 60 (42"H)

Item: BCS - BB - 30

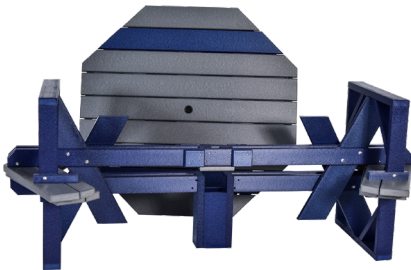
Color: BK - AM (2TS)

Picnic Tables (PT)

Umbrella hole is standard; please state on Order Form if you do not want it. Available in all colors.



Item: OPT
 Color: PT - DG (2TS)
 Size: 86"x 86" x 29"h



- Comes apart easily for hauling or storage!
- Comes apart in 3 pieces!
- No fasteners needed!



Item: PT6
 Color: BK - CW (2T)

Traditional Tables (TT)

- Available in 30"H only

Rectangular Table

Item: TT - 28 x 72 (30"H)
 2 Items: B6B - T - 18 (benches)
 2 Items: DS - 18 (stools)
 Color: TG - BC (2T)



End Tables (ET)



Item: ET16
Color: BK - CW (2TS)
Size: 16"W x 20-1/2"D
x 21-1/2"H



Item: ET27
Color: DG - LG (2TS)
Size: 16"W x 26"D
x 27"H



Item: ET30
Color: PT - DG (2TS)
Size: 16"W x 24"D
x 33"H

Footrests (FR)



Gliding Footrest (FRG)
Color: BK - TB (2T)
Size: 23"W x 18"D x 14-1/4"H



Stationary Footrest (FRS)
Color: BK - TB (2T)
Size: 23"W x 18"D x 14"H

Cupholders (CH)

with
Mug
Handle
Slot!



Available in Left-Handed
or Right-Handed!



Item: CH
Color: DG- WW - 2T
Size: 5-1/2" x 5-1/2" x 3"H

Stepstools (SS)



Color: BK - TB (2TS)
Size: 18-1/2"W x 11-3/4"D
x 13-1/4"H

Coffee Tables (CT)

Colonial



Item: CT - CL - 22.5 x 48
Color: CW - DG (2T)
Size: 22-1/2"W x 48"L x 18"H

4-Legged



(Shown with shelf)

Item: CT - 4L - WS (with shelf)
Color: TB - WW (2T)
Size: 22-1/2"W x 48"L x 20"H



(Shown without shelf)

Item: CT - 4L
Color: BK - DG (2T)
Size: 22-1/2"W x 48"L x 20"H



Gas Fire Tables (FT)

For all Gas Fire Tables:

- Access door conceals standard 20 lb. propane tank (not included)
- Burner Cover included
- FWG = Folding Glass Wind Guard (included)

Item: FT - PT - FWG

Table Size: 22-1/2"W x 48"L x 26-1/2"H

Burner Size: 12"x 24"

- Available in all colors. Mix or match.



Item: FT - 44 - 72 - 30

Table Size: 44"W x 72"L x 30"H

Burner Size: 12"x 42" (Burner cover included)

- Available in 30", 36" & 42" heights
- Only available in standard & woodgrain colors; mix or match



Inset shows burner cover in place.

* Fire Media (FM)

NOTE: 10# (two 5-lb bags) of fire media needed for 12" x 24" burner

* 10# of clear fire media is included with each Fire Table

Clear (CFG-D)

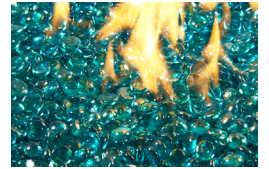


OR... Choose from 9 other media options. (extra charges apply)

(Onyx not pictured below)



Amber (CFG-A)



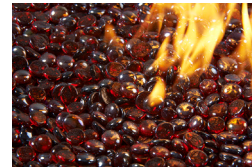
Aqua Marine (CFG-AM)



Black Diamonds (CFLD-B)



Copper Diamonds (CFLD-C)



Ruby (CFG-R)



Log Set (CR20-LOG SET)



Lava (LAV-TMB)



Lava Rock (LAVA ROCK)

Gas Fire Tables (FT) with Round Burner

- Table Size: 48" x 48" x 36"H
- Burner Size: 20" round

See previous page
for Fire Media.



- * Available in 30", 36", & 42" heights.
- * Only available in Standard & Woodgrain. Colors: Mix or match.
- * Access Door conceals 20 lb. propane tank (tank not included)
- * Stationary Wind Guard included.
- * Burner Cover included.
- * Clear Media included.

Item: FT - 20R - 48" x 48" x 36"H
Color: TB - solid



Item: FT - 20R - 48" x 48" x 36"H
Color: BK - BW - 2T



Item: FT - 20R - 48" x 48" x 36"H
Color: DG - LG - 2TS

Poly Plant Stands

All stands available in 4 heights: 18" h, 22" h, 26" h, 30" h



Item: 14-R
Color: PT
Size: 14" Round

(All colors available for the 14-R except the Premium Colors.)



Item: 12-S
Color: TB
Size: 12" X 12"



Item: 15-S
Color: DG
Size: 15" X 15"

(Available in all colors.)

TANGENT®

SUSTAINABLE LUMBER

Care & Cleaning Instructions



GENERAL CLEANING

- Scrub boards with soap and water solution using a soft sponge or plastic-bristled brush.
- You can use a soft-bristled toothbrush to clean spaces that are hard to reach.
- To remove surface dust, just wash furniture with cold, clear water.



DEEP CLEANING

- A pressure washer can be used on the lightest setting to deep clean your furniture.
- It is not recommended to use more than 1,500psi.
- Keep the tip of the pressure washer at least 10-12 inches away from the furniture so it does not damage the lumber.

STAIN CHART

STAIN	RECOMMENDED CLEANING PROCESS
Pencil Marks	Use a mild dish detergent and water to saturate the stain. Rinse clean with water.
Ink/Marker	Use a mild dish detergent and water to saturate the stain. Rinse clean with water. For tougher stains, treat area with a penetrating oil. Wipe off and wash clean with water and a mild dish detergent.
Grease or Oil Stain	Use a mild dish detergent and water to saturate the stain. Rinse clean with water.
Embedded Dirt	Use a mild dish detergent to saturate the area. Scrub with a soft-bristled brush. Rinse clean with water.
Wine	Use a mild dish detergent to saturate the area. Scrub with a soft-bristled brush and rinse clean with water.
Chewing Gum	Coat penetrating oil over the area. Gently pry up on any hard pieces with a plastic putty knife. Utilize a soft brush and acetone solvent to remove any fine debris and clean out any crevasses. Rinse area clean with water.
Bird Droppings	Use a mild dish detergent to saturate the area. Scrub with a soft-bristled brush and rinse clean with water.
Stains and Scuffs	A foam eraser sponge may be used for stubborn marks.
Iron and Rust	For tough iron and rust stains, saturate with a heavy-duty rust remover and scrub with a soft-bristled brush.

Always read and follow the product manufacturers' specific instructions before using any cleaning product. Always wear approved safety glasses, gloves, face shield or goggles when operating cleaning equipment. If using alternative cleaning solutions than those outlined above, it is recommended to test the solution on an inconspicuous area of the lumber to make sure it does not harm the surface. For more information visit tangentsmaterials.com.

TRC001-230105

