



# *Capitol Crest*

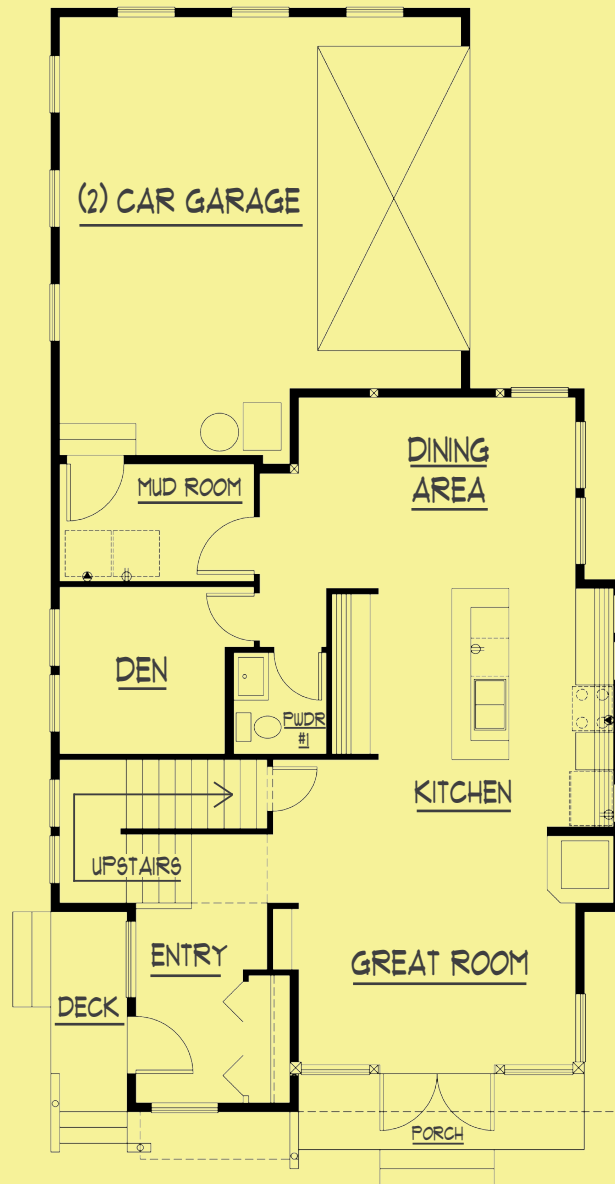
## *Home sweet home in the city*

Be at your ease... amid the chaos of civilization. Capitol Crest boasts a chic layout connecting the dining room, kitchen, and great room in one uninterrupted space bathed in light. A floor-to-ceiling glass wall opens onto the porch. Come rain, shine, sirens, or parades, it's the urbanite's perfect getaway.

  
[www.armstrong-homes.com](http://www.armstrong-homes.com)

# MAIN FLOOR

Building length: 60.5 ft.  
Building width: 30 ft.  
Main floor area: 983 sq. ft.  
Garage area: 485 sq. ft.  
Porch/deck area: 108 sq. ft.



[www.armstrong-homes.com](http://www.armstrong-homes.com)

253-833-3355 253-833-6666 425-885-5552 (Redmond) 360-373-5061 (Bremerton)

## *"Capitol Crest"*

# UPPER FLOOR

Upper floor area: 1005 sq. ft.  
Total living area: 1988 sq. ft.

