

# *the Roanoke*



## *Step into style*

This is living at its most luxurious: the great room, dining room, fireplace, and kitchen all connected in one breathtaking open space. And with a deck, patio, and porch, the Roanoke affords plenty of room for barbecuing, entertaining, or simply relaxing. Say hello to a beautiful home.

  
[www.armstrong-homes.com](http://www.armstrong-homes.com)

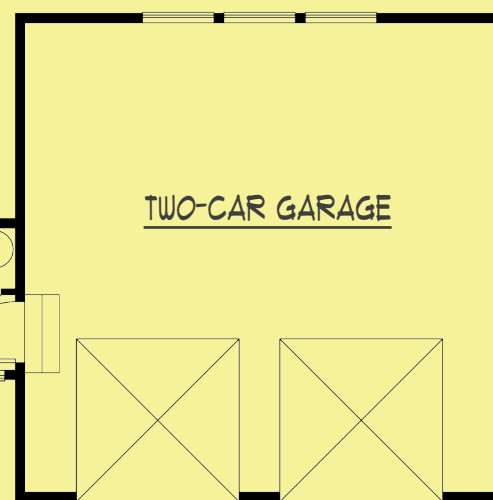
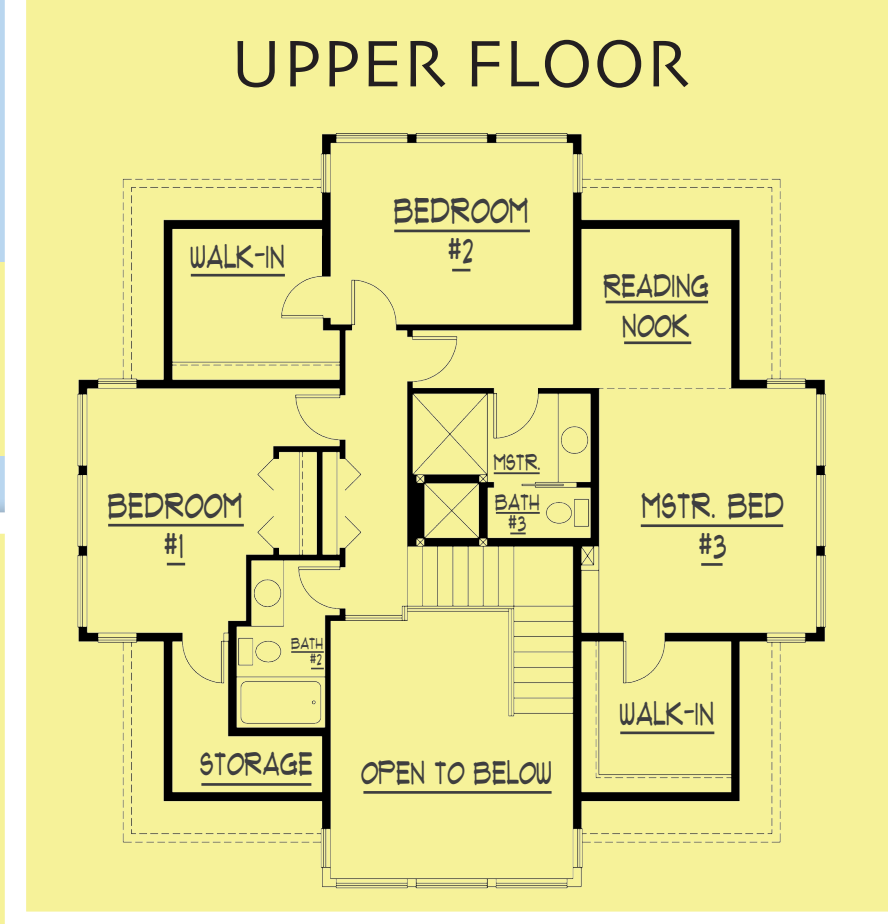
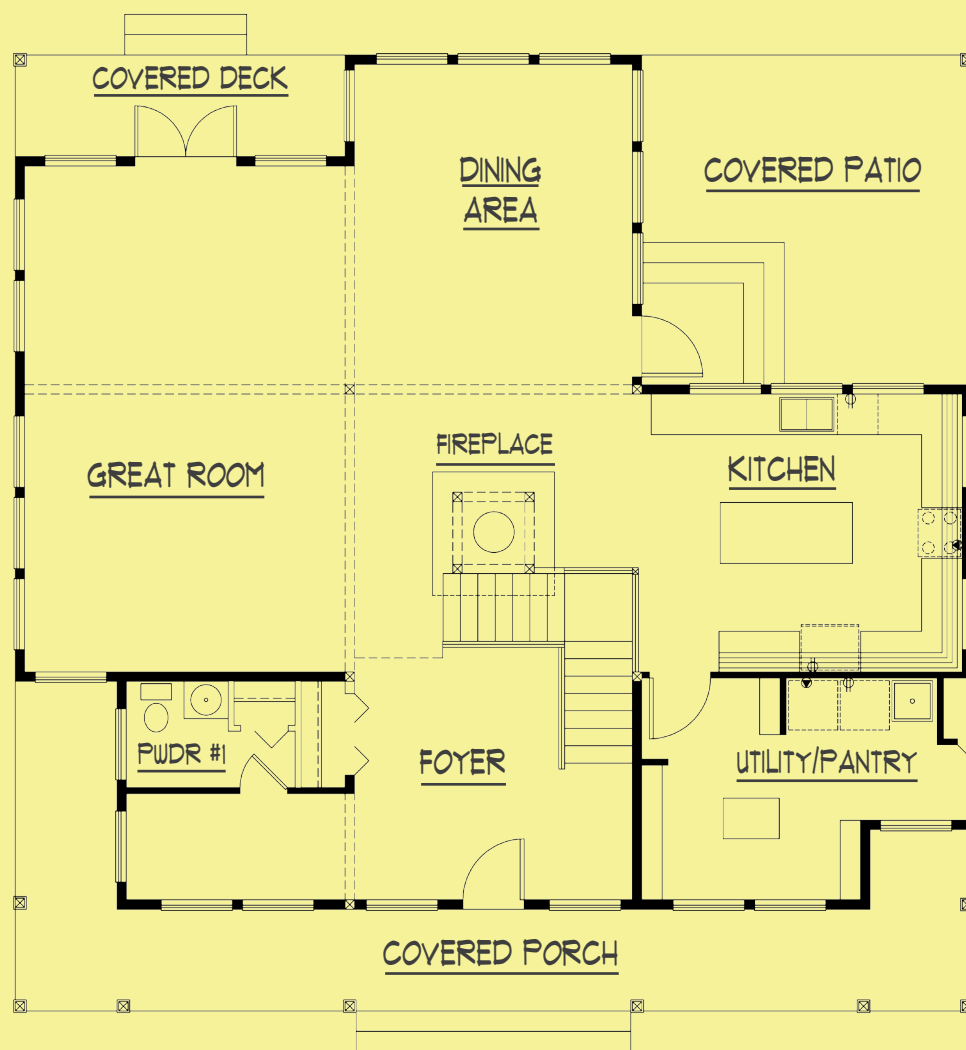




www.armstrong-homes.com

253-833-3355 253-833-6666 425-885-5552 (Redmond)

360-373-5061 (Bremerton)



MAIN FLOOR

### *"the Roanoke"*

Length:	76 ft.
Width:	47 ft.
Main floor:	1594 sq. ft.
Upper floor:	1330 sq. ft.
Total living:	2924 sq. ft.
Garage area:	576 sq. ft.
Porch area:	691 sq. ft.