



# ***MOVIN' ON GPS***

***FLEET MANAGEMENT***



## **MOSS GPS**

## **Mobile Tracker App**

# Mobile Tracker



- Low cost location sharing from iPhone and Android
- Embedded feature within GPS Fleet Tracker App
- Integrated with existing MOSS GPS portal
- Simple solution, minimal impact to employees

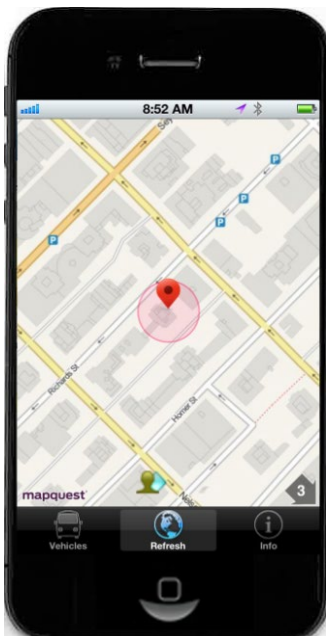
## Mobile Tracker App

- For employers who wish to locate their employees during the workday for safety and productivity, but who cannot install a tracking device in the employee's vehicle, Mobile Tracker provides 1 to 10 minute location updates from a simple iPhone / Android App.
- Unlike alternative solutions, Mobile Tracker minimizes impact on the employee's battery life, leverages the phone's existing data plan, and doesn't require the employee to manually check-in.

# Benefits

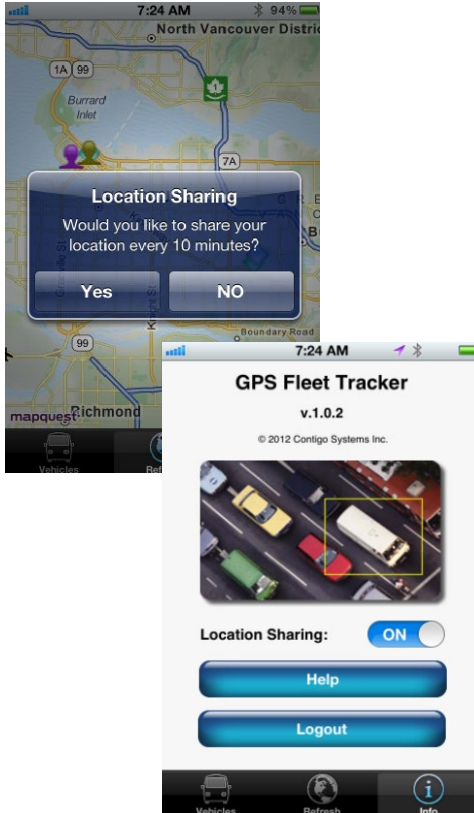
- Integrated with **MOSS GPS Fleet Tracker** application
- Most popular iPhone and Android handsets / tablets supported
- One web interface - Both vehicles and personnel are visible in the same web portal and reports
- Battery-optimized - minimize impact on employee productivity
- Control – managers can administrate which employees may be tracked, and who has rights to view those locations
- Protects employee privacy - allows them to disable tracking while on personal time or off hours
- Single smartphone/tablet interface – the GPS Fleet Tracker app can be utilized to share locations, and to view the locations of colleagues and fleet vehicles
- No new data plan – leverages the phone/tablet's existing web/email data plan

## How it works



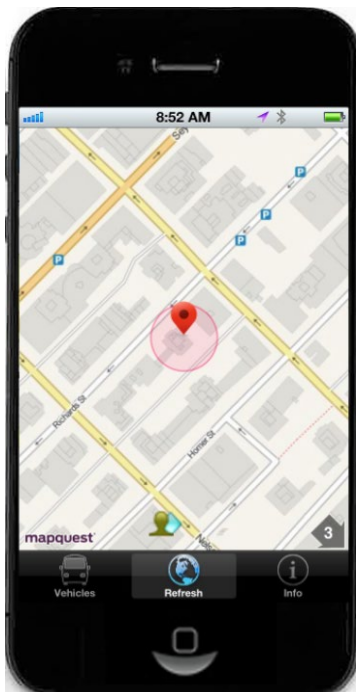
- Employees download and install MOSS' GPS Fleet Tracker App
- User is prompted if they want to share their location with GPS portal
- User can adjust reporting frequency from 1 to 10 minutes
- Employee can turn off location tracking
- Perfect for sales staff

# Employees have control



- Satisfy employee privacy concerns
- Users choose whether or not to share when the app launches
- Users can disable sharing, or logout of the application, when they are off-duty, hiding their location from the server

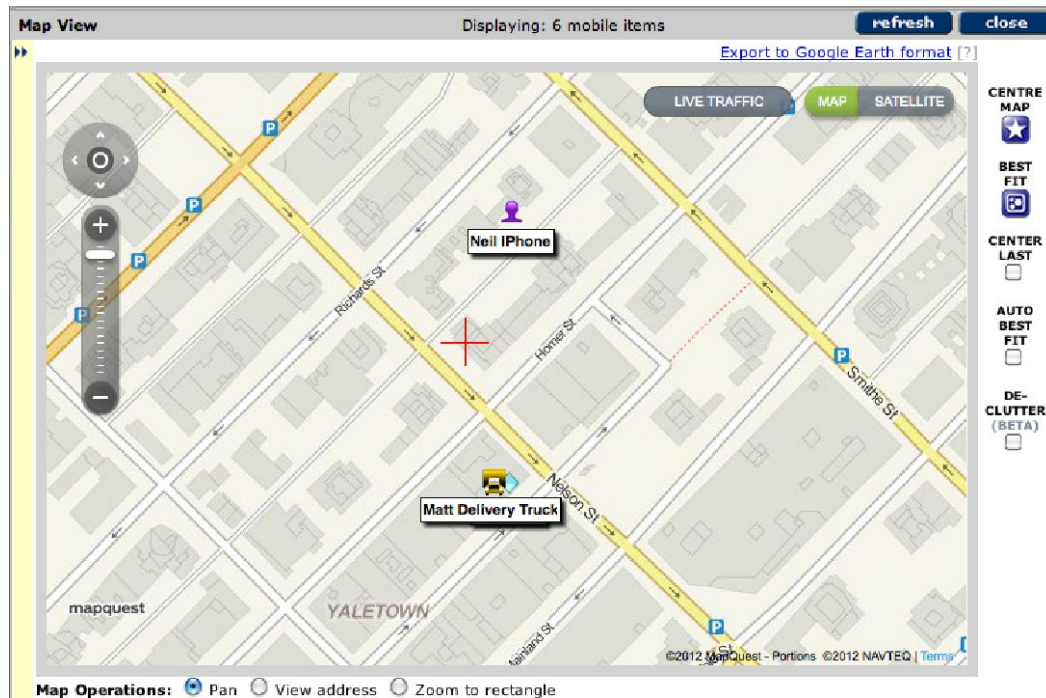
## Simple view for employees



- Employees see their own location on the **GPS Fleet Tracker Map**
- Can continue to see vehicles / employees in the same map
- User privileges define which vehicles they can see

# Simple dashboard view for managers

- Both fleet vehicles and phone users appear in the same mapping interface and reports



## Easy setup

- Employers create user accounts with **Mobile Tracker** privilege
- Employees login from **GPS Fleet Tracker**, and are prompted if they want to share their location