

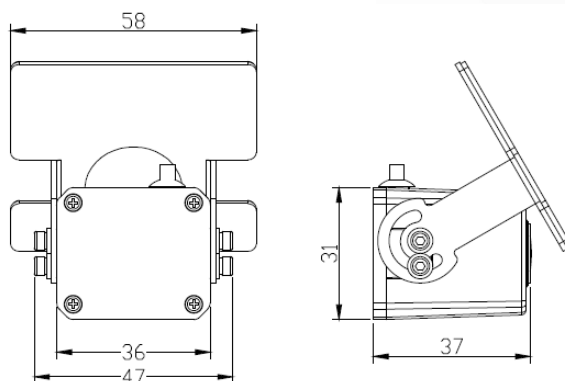
# MOSS-AHD1080-GMC1

High resolution, 2.0Mega Pixel, 12 V DC

## 1080P AHD Glass Mounted Camera



### Dimensions:



### Features:

- Aluminum housing.
- Wide angle lens.
- Low power consumption.
- Audio output
- Easy Glass Mounting
- Adjustable Mounting Bracket

### Packing list:

Camera	1
Instruction manual	1
Hex-key	1

### Operation procedures:

1. Tear off 3M glue from covering layer, fixed the camera on the right location.
2. Connect the cable as bellows.



1---12VDC (+)  
2---12VDC/GND (-)  
3---Audio or N/A  
4---Video

### Specifications:

Model	MOSS-AHD1080-GMC1
Image Sensor	1/2.8" IMX 307
TV System	PAL/NTSC (optional)
Picture Elements	1920 (H) x 1080 (V)
Sensitivity	0.001 Lux/F1.2
Scanning System	Progressive scan RGB CMOS
Synchronization	Internal
Auto Gain Control (AGC)	Auto
Electronic Shutter	Auto
BLC	Auto
Infrared Spectrum	N/A
Infrared LED	N/A
Video Output	1 Vp-p, 75Ω, AHD
Audio	Available
Mirror	Optional
ICR	N/A
Noise Reduction	3D
Lens	f2.5mm Megapixel
Pan Adjusting	N/A
Tilt Adjusting	0-80°
Power Supply	12V DC±10%
Power Consumption	130mA (Max)
Net Weight	102 g
Weatherproof	N/A
Operating Temperature	-30°C to +70°C

\*Specifications are subject to change without prior notice\*.