

MOSS-AHD960-FMC180

Front Mounted 180 Degree Fisheye Lens

MOSS-AHD960-FMC180

High resolution, 1.3Mega Pixel, 12V DC



Features:

- Metal-cased with fixed lens.
- Available in black finish.
- Low power consumption.
- IP67 waterproof.
- 120dB Real WDR.
- High sensitivity Starvis.
- Fisheye Lens.

Packing list:

Camera	1
Instruction manual	1
Self Drilling screw	2

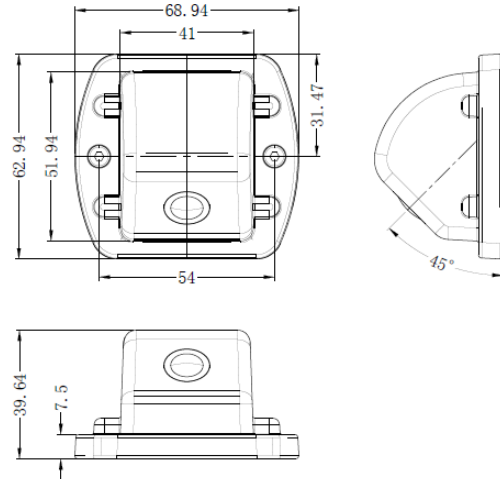
Operation procedures:

1. Attach the camera wherever you want to install the it and secure the base by the supplied mounting screws.
2. Fix the lock screw.
3. Connect the cable as bellows.



- 1---12VDC (+)
- 2---12VDC/GND (-)
- 3---N/A
- 4---Video

Dimensions:



Model	MOSS-AHD960-FMC180
Image Sensor	Sony 1/3.2"
TV System	PAL @ 25fps NTSC @ 30fps
Picture Elements	1280 (H) x 960 (V)
Sensitivity	0.1 Lux/F1.2
Scanning System	Progressive scan RGB CMOS
Synchronization	Internal
S/N Ratio	More than 46dB (AGC Off)
Auto Gain Control (AGC)	Auto
Electronic Shutter	Auto
BLC	Auto
Infrared Spectrum	N/A
Infrared LED	N/A
Video Output	1 Vp-p, 75 Ω ,AHD
Audio	N/A
Mirror	N/A
ICR	N/A
Noise Reduction	3D
Dynamic range	120 dB
Lens	f1.58mm fish-eye lens
Power Supply	12V DC±10%
Power Consumption	85mA (Max)
Dimensions (L x W x H)	69*63*40 mm
Net Weight	136g
Weatherproof	IP67
Operating Temperature	-30°C to +70°C

*Specifications are subject to change without prior notice.