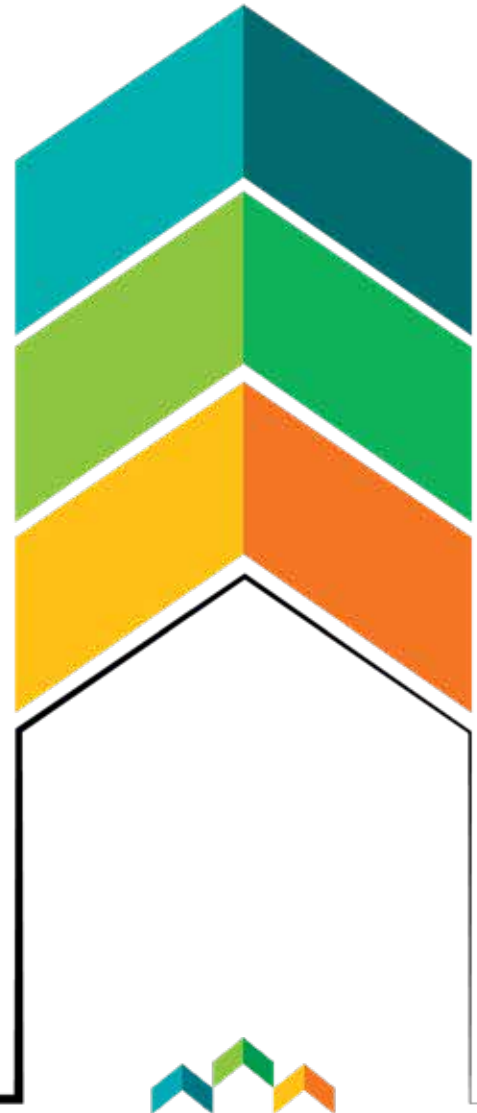


PARAMOUNT

Sectionals




J. REDMAN
HOMES.

by



CHAMPION
HOMES

About Us

Located in the Amish country of Northern Indiana where pride and craftsmanship run deep, we are recognized today for offering some of the highest-quality manufactured and modular homes in the Midwest. It's a recognition achieved by consistently delivering more than our customers might expect.

- **More innovative quality features.**
- **More home styles and flexible floor plan designs.**
- **More helpful customer service.**
- **And most of all, more home for your money.**

Beyond just building you a house,

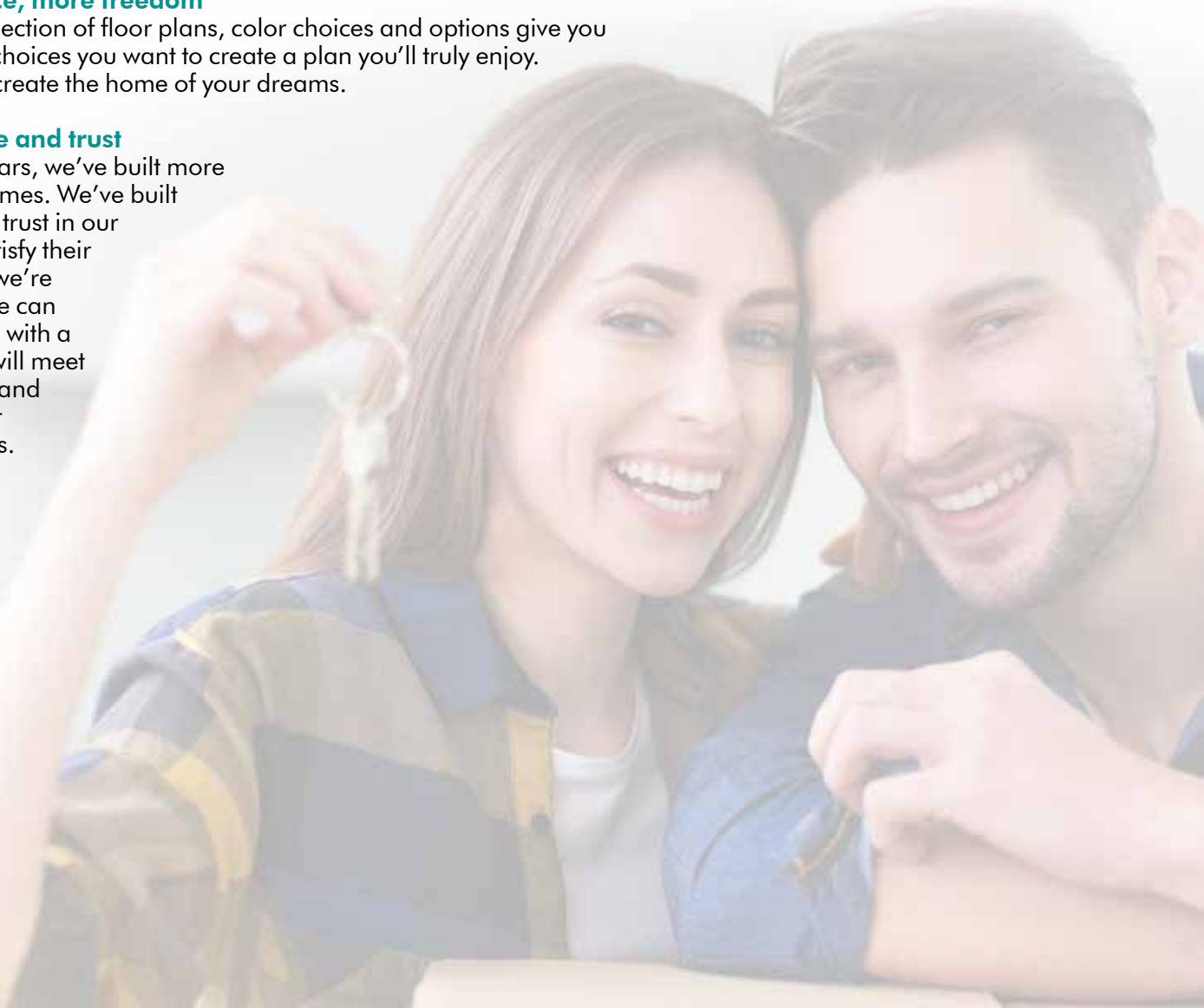
We're committed to providing you and your family with a home to make memories in that will last a lifetime. Somewhere you can feel secure. A place you can call your own. A home that fits your lifestyle and has your own personal touch. Whether you're an active young family constantly on the go or empty-nesters ready to simplify, just relax – we have a home that's right for you.

More choice, more freedom

Our vast selection of floor plans, color choices and options give you the design choices you want to create a plan you'll truly enjoy. It's easy to create the home of your dreams.

Confidence and trust

Over the years, we've built more than just homes. We've built homebuyer trust in our ability to satisfy their needs and we're confident we can provide you with a home that will meet your needs and exceed your expectations.



PARAMOUNT 24' Sectionals

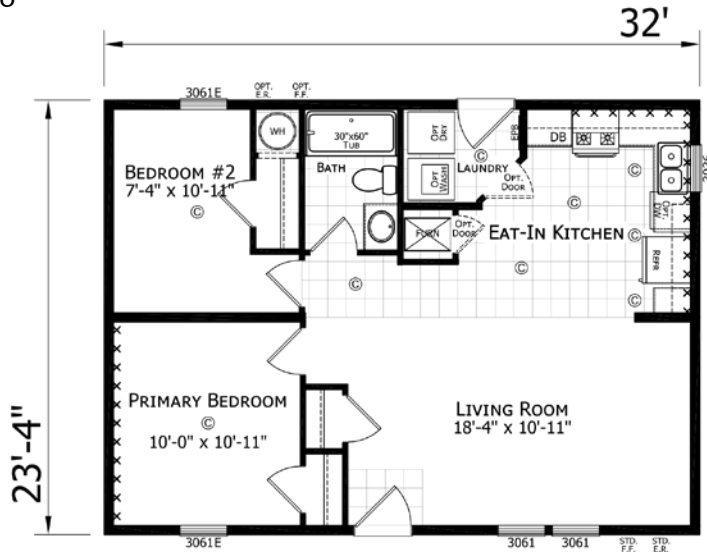


32' CASPER

2 BED • 1 BATH • 747 SQ. FT.

2432H21166

Also available in a 24' x 36'

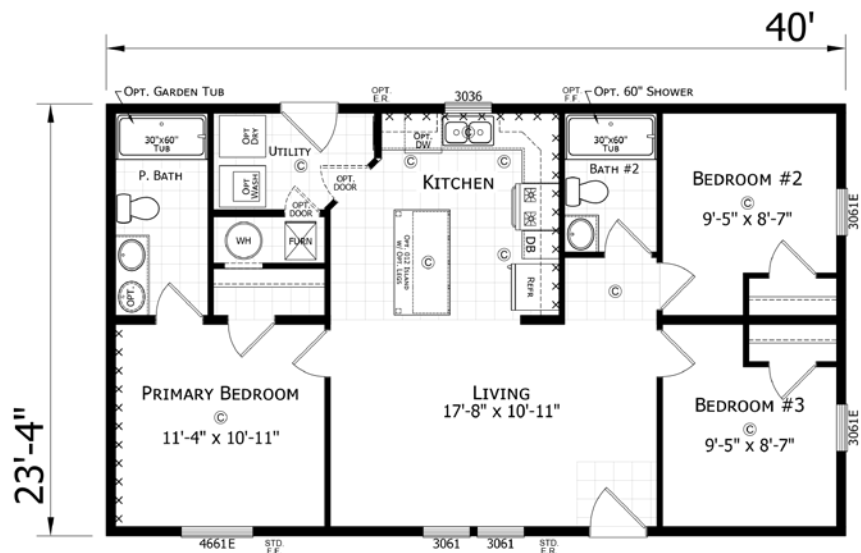


40' SHERIDAN

3 BED • 2 BATH • 933 SQ. FT.

2440H32382

Also available in a 24' x 44' and a 24' x 48'



Opt. End Entry

NOTE: 24' wide homes are not available as modulares.

PARAMOUNT 24' Sectionals



FAIRPLAY



3 BED • 2 BATH • 1120 SQ. FT.

2448H32384



52' BROOMFIELD



3 BED • 2 BATH • 1213 SQ. FT.

Also available
in a 24' x 56'

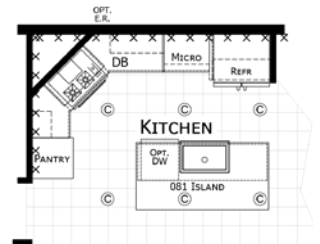
2452H32160





2456H32168

Take a Virtual Tour!



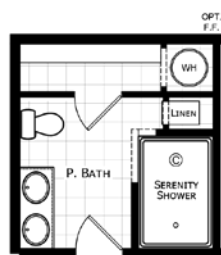
Opt. Ultimate
Kitchen 2

GLENROCK

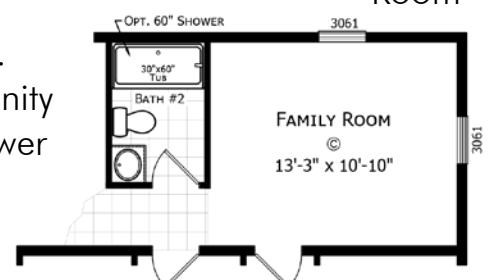
2460H42096



Opt.
End
Entry



Opt.
Serenity
Shower



Opt.
Family
Room

PARAMOUNT 28' Sectionals



40' MONROE

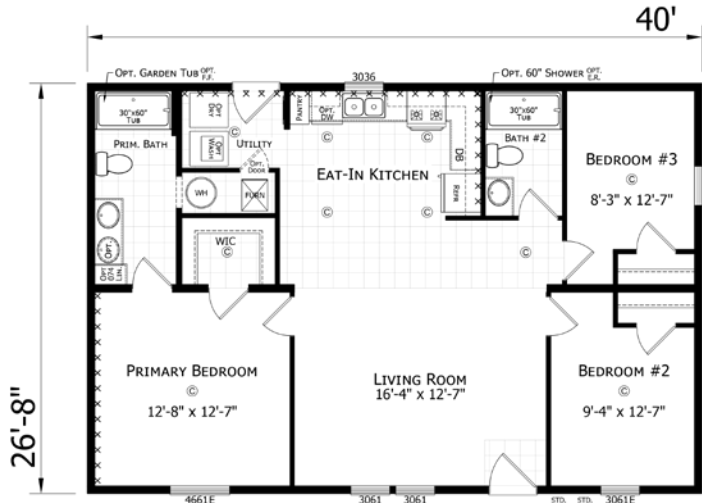


3 BED • 2 BATH • 1067 SQ. FT.

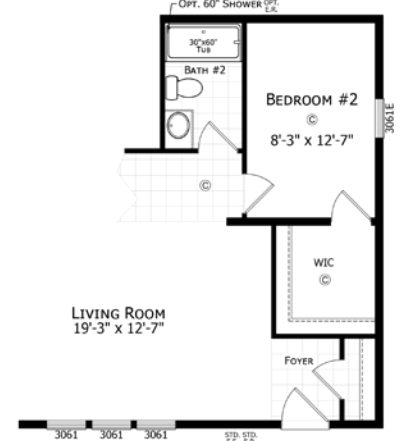
2840H32024

Take a
Virtual Tour!

Also available in a
28' x 44 and a 28' x 48'



Opt. Rear Entry



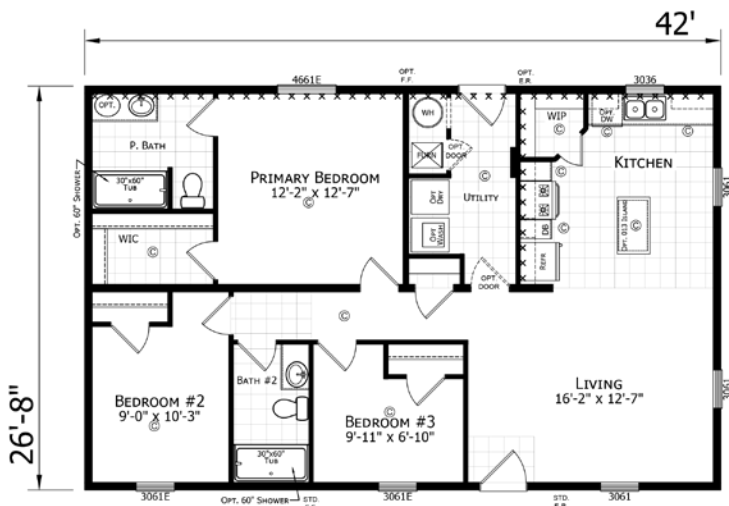
Opt. 2 Bedroom

APPLETON



3 BED • 2 BATH • 1120 SQ. FT.

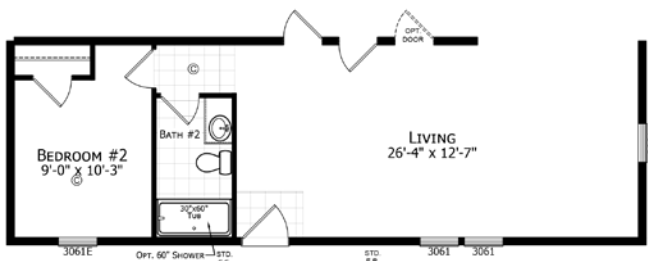
2842H32388



Opt. Porch



Opt. Ultimate
Kitchen 2



Opt.
2 Bedroom



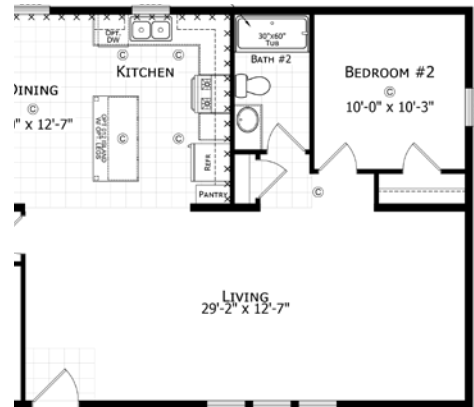
PARAMOUNT 28' Sectionals

44' BAYFIELD

3 BED • 2 BATH • 1173 SQ. FT.

2844H32169

Also available in a
28' x 48' and a 28' x 52'



Opt. 2 Bedroom

48' LANCASTER

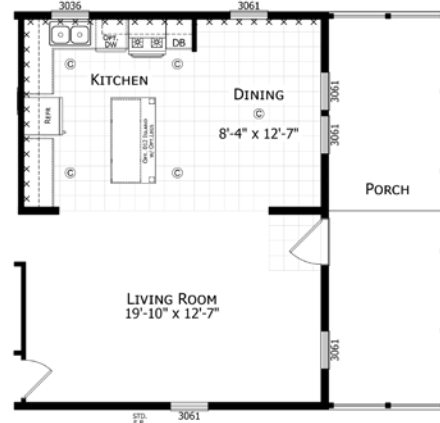
3 BED • 2 BATH • 1280 SQ. FT.

2848H32160

Also available
in a 28' x 52'



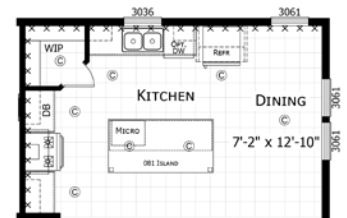
Opt. Porch



Opt. 2 Bedroom



Opt. Ultimate Kitchen 2



Opt. Summit Kitchen
Avail. w/ Stone Countertops

PARAMOUNT 28' Sectionals



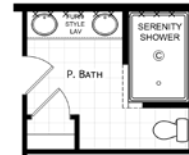
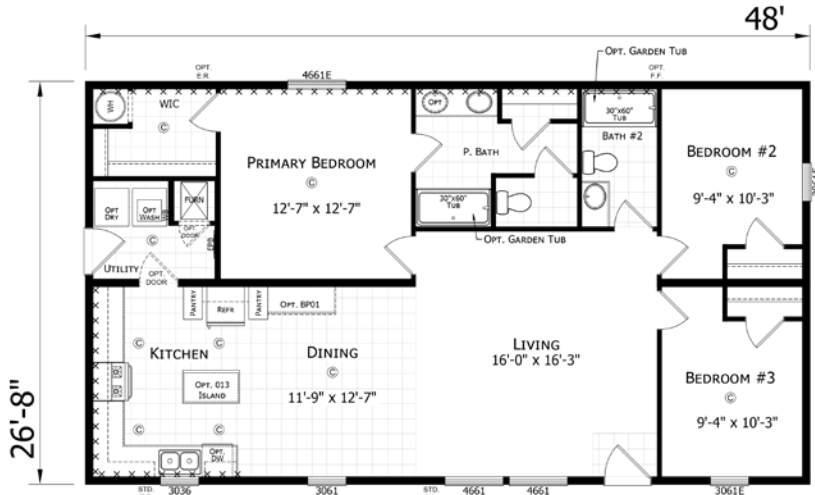
48' BRIGHTON



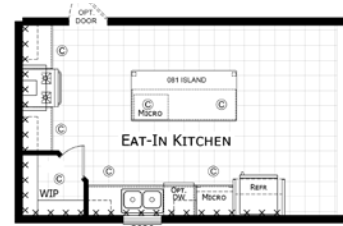
3 BED • 2 BATH • 1280 SQ. FT.

2848H32170

Also available
in a 28' x 52'



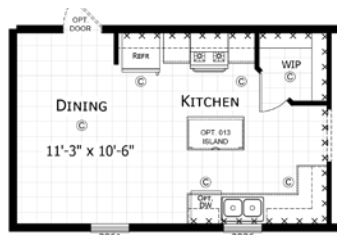
Opt.
Serenity
Bath



Opt. Summit Kitchen
Avail. w/ Stone Countertops



Opt. Kitchen 1



Opt. Kitchen 2

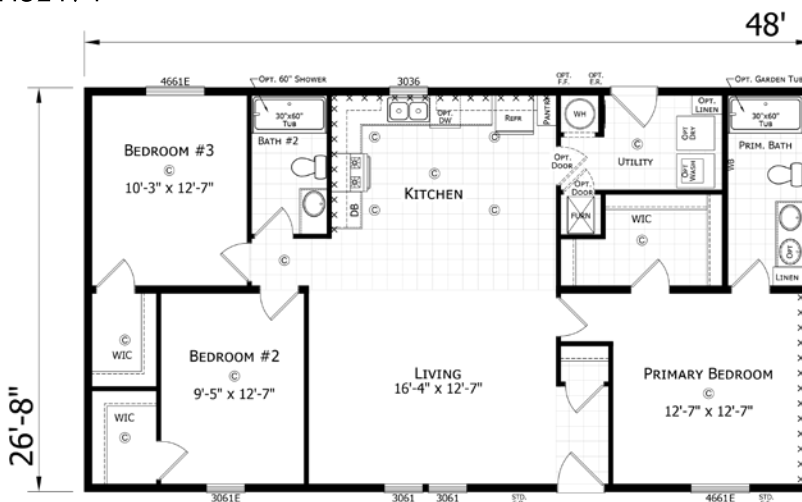
48' LINCOLN



3 BED • 2 BATH • 1280 SQ. FT.

2848H32171

Also available in a
28' x 52' and a 28' x 56'



Opt. End Entry

PARAMOUNT 28' Sectionals



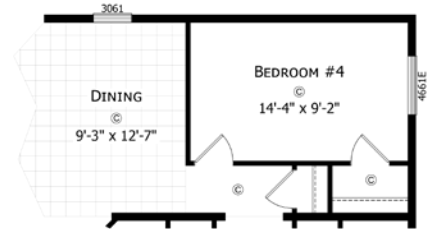
52' VENTURA



3 BED • 2 BATH • 1387 SQ. FT.

2852H32034

Also available
in a 28' x 56'



Opt. Bedroom 4



Opt.
End
Entry



Opt.
Glamour
Bath

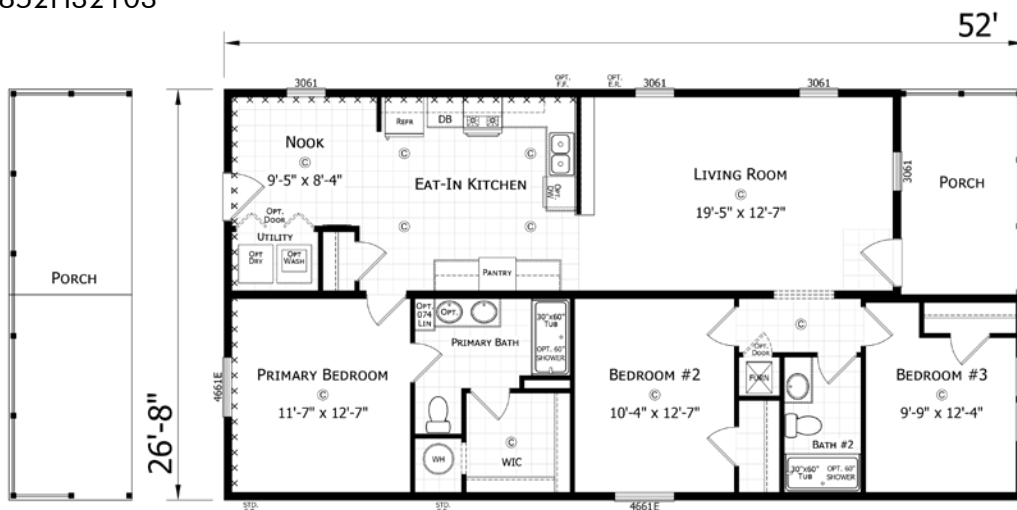
52' PONTIAC



3 BED • 2 BATH • 1387 SQ. FT.

2852H32103

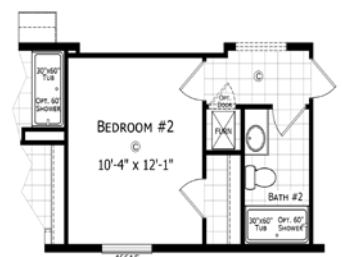
Also available
in a 28' x 56'



Opt. Porch



Opt. Ultimate
Kitchen 2



Opt. Living
Room Offset



Take a
Virtual
Tour!



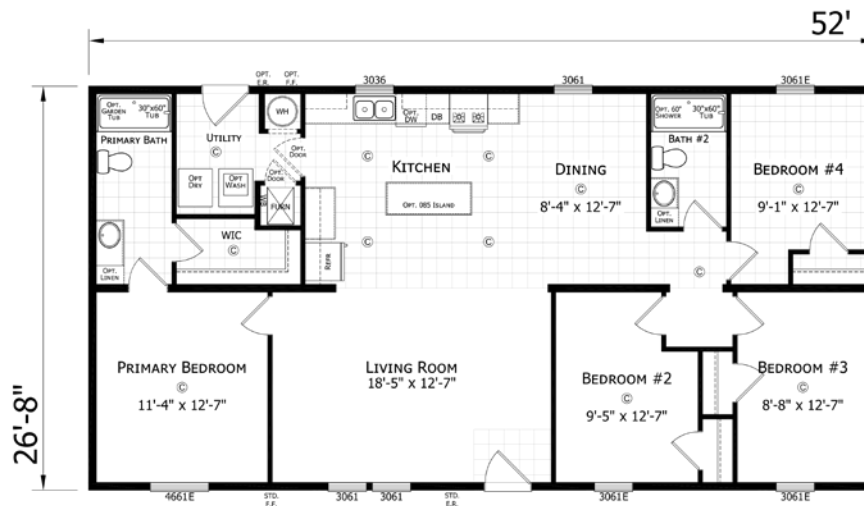
PARAMOUNT 28' Sectionals

LIVINGSTON



4 BED • 2 BATH • 1387 SQ. FT.

2852H42096

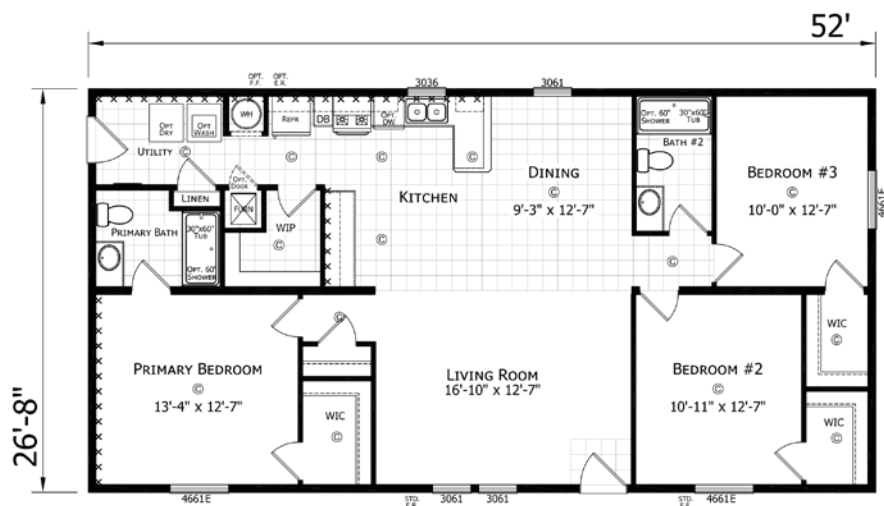


PIERRE



3 BED • 2 BATH • 1387 SQ. FT.

2852H32393



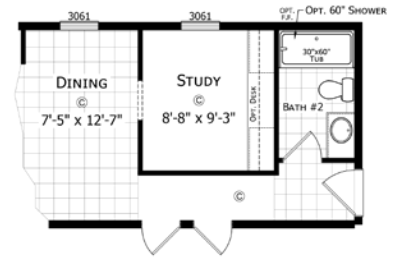
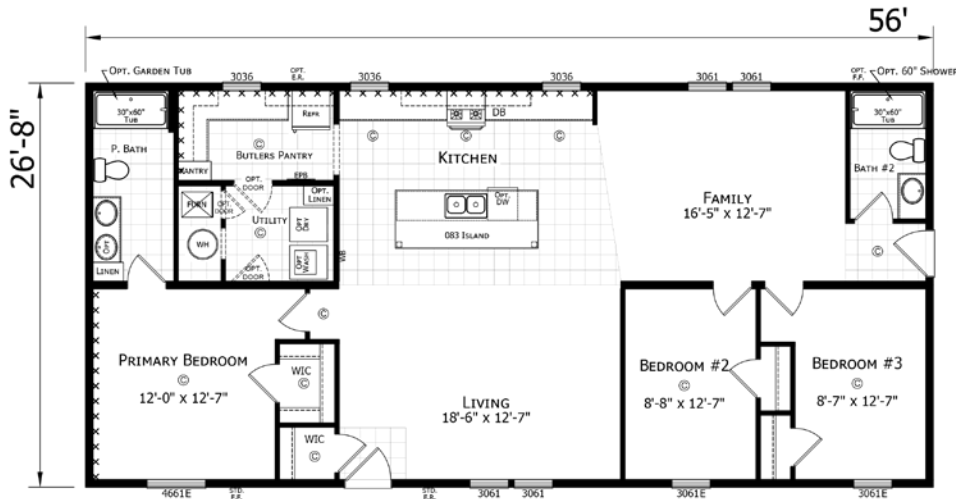
PARAMOUNT 28' Sectionals



BELVIDERE

3 BED • 2 BATH • 1493 SQ. FT.

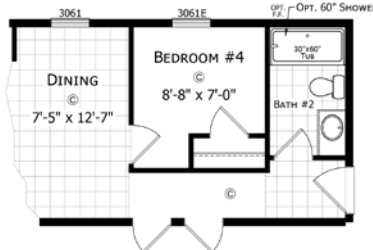
2856H32392



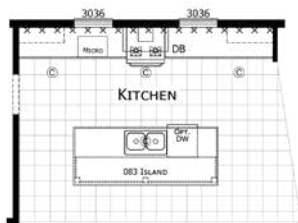
Opt. Study/Dining



Opt. Utility Room



Opt. Bedroom 4



Opt. Kitchen

Includes Euro Range Hood
& Built-in Microwave



**Take a
Virtual
Tour!**



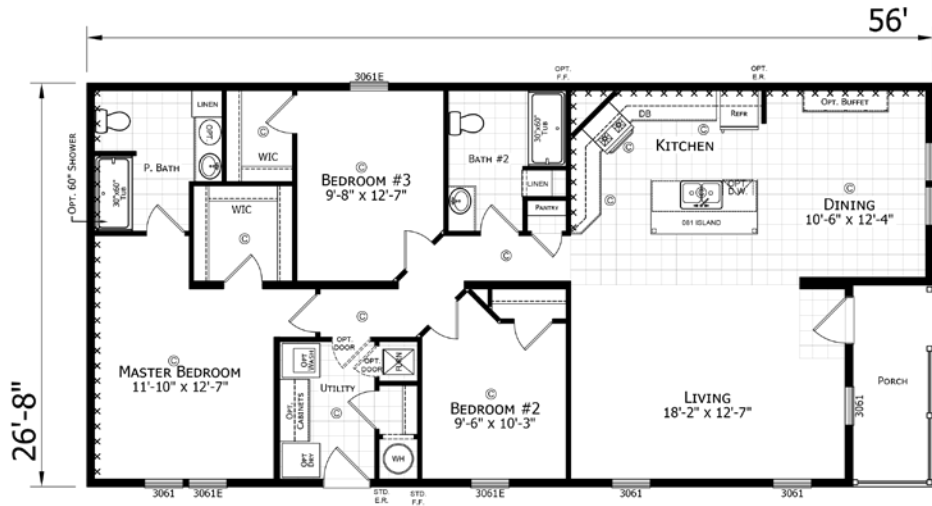
PARAMOUNT 28' Sectionals

56' BAY PORT

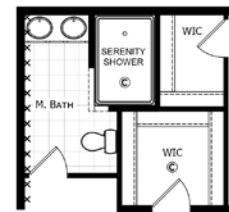
3 BED • 2 BATH • 1493 SQ. FT.

Also available in a 28' x 60'

2856H32168



Opt. Ultimate Kitchen 2



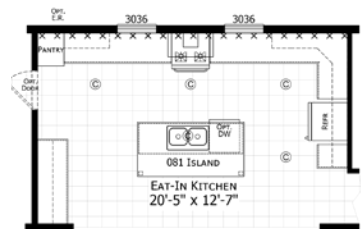
Opt. Serenity Bath

56' SILVERTON

3 BED • 2 BATH • 1493 SQ. FT.

Also available in a 28' x 60'

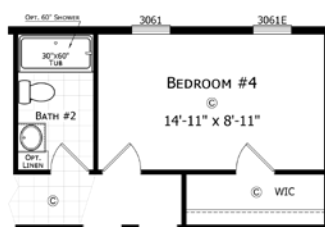
2856H32174



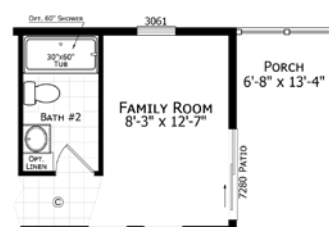
Opt. Kitchen
End Range Hood Required



Opt. End Entry



Opt. Bedroom 4



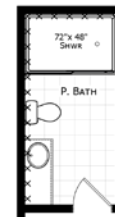
Opt. Half Porch



Also available in a 28' x 60'

[illegible]

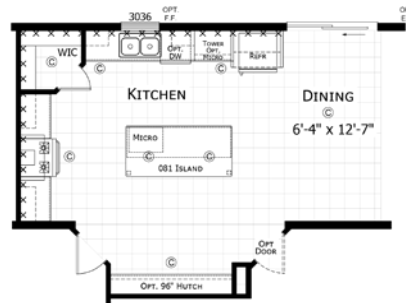
Take a Virtual Tour!



Opt.
Luxe
Shower



Opt.
Ultimate
Kitchen 2



Opt.
Summit
Kitchen

Avail.
w/ Stone
Countertops



Opt.
Double
Island



PARAMOUNT 28' Sectionals

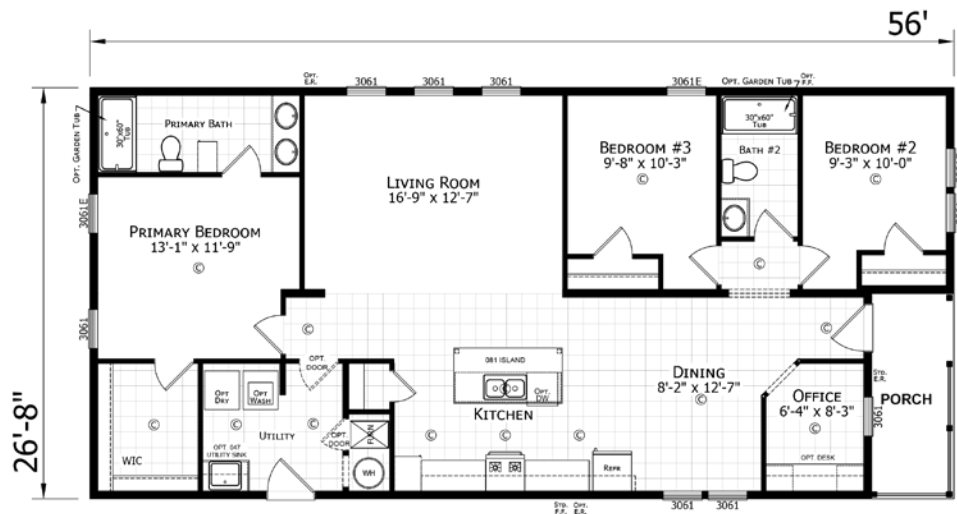
**NEW
MODEL!**

BERKLEY



3 BED • 2 BATH • 1493 SQ. FT.

2856H32449



Opt. Luxe Bath



Opt. Summit Kitchen

Avail. w/ Stone Countertops



Opt. Ultimate Kitchen 2

PARAMOUNT 28' Sectionals

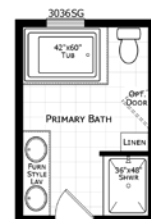
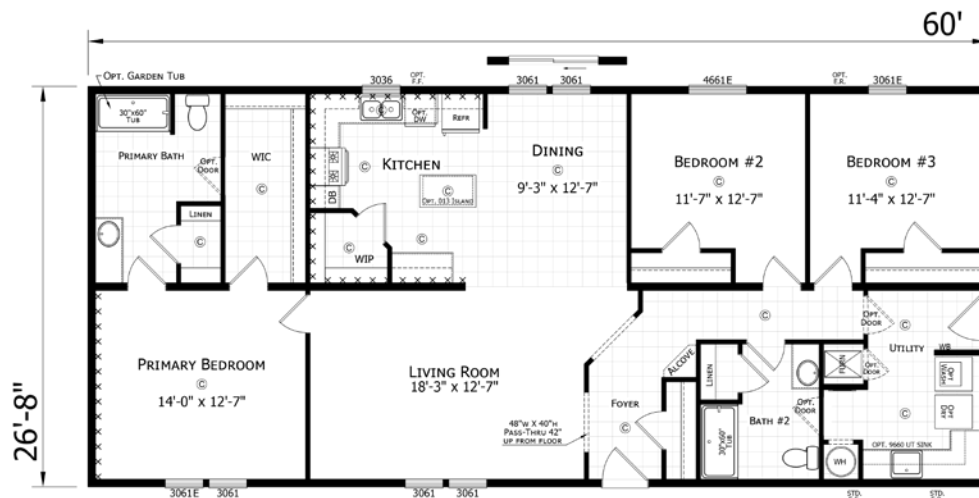


MYRTLE



3 BED • 2 BATH • 1600 SQ. FT.

2860H32308



Opt. Primary Bath



Opt.
Serenity
Shower



Opt. Ultimate Kitchen 2



Opt. Door Location
Requires Patio Door in Dining Room



**Take a
Virtual
Tour!**



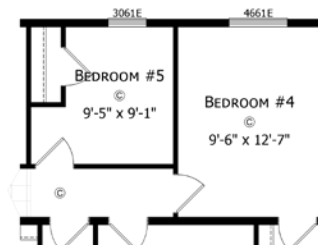
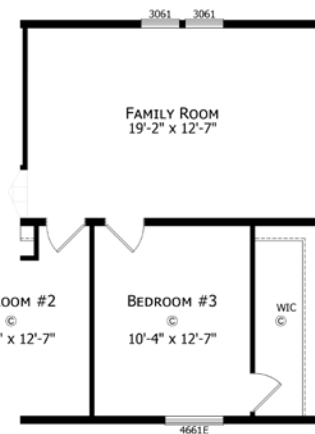
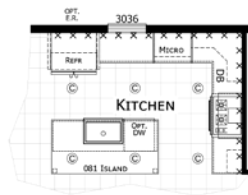
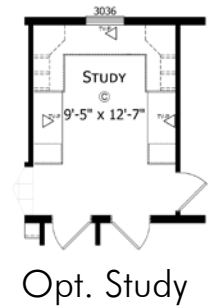
PARAMOUNT 28' Sectionals

ALBERTA



4 BED • 2 BATH • 1707 SQ. FT.

2864H42177



PARAMOUNT 28' Sectionals

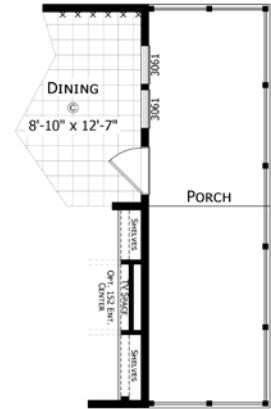


FILLMORE

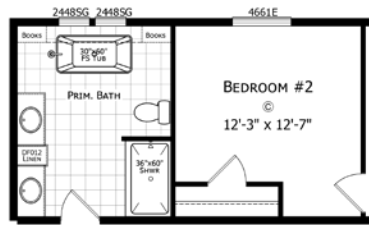


3 BED • 2 BATH • 1707 SQ. FT.

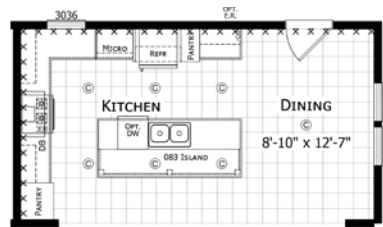
2864H32060



Opt. Porch



Opt. Master Bath



Opt. Ultimate Kitchen 2



Opt.
Serenity
Bath



Opt. Half Bath



**Take a
Virtual
Tour!**

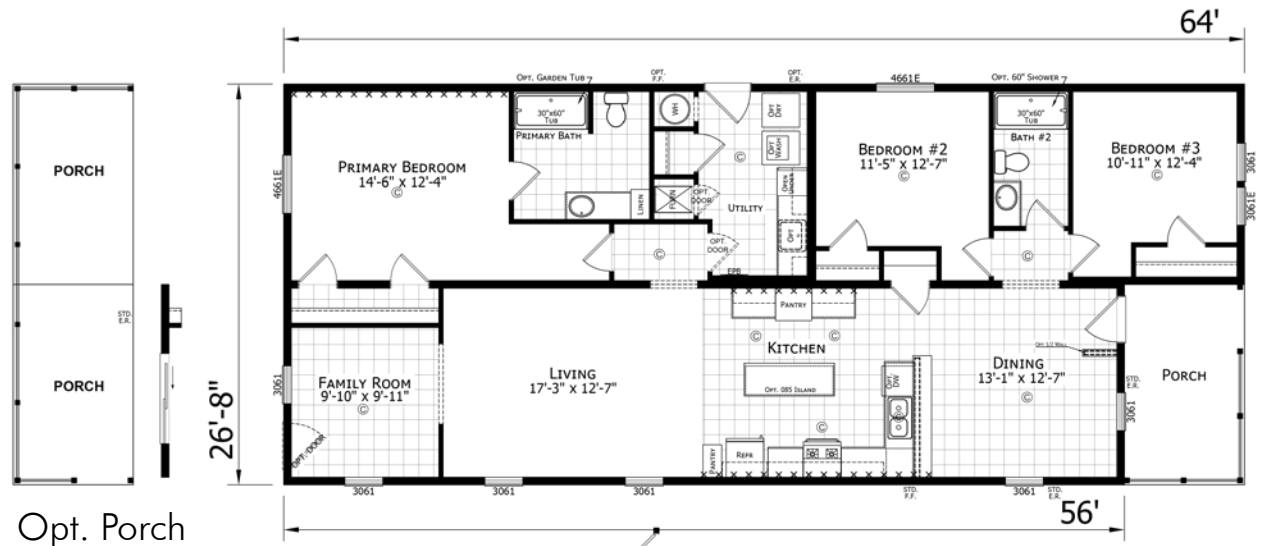


PARAMOUNT 28' Sectionals

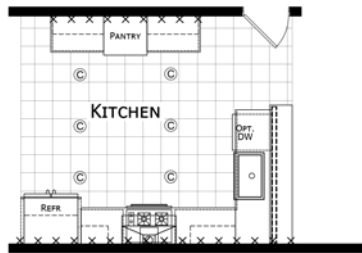
GEORGETOWN

3 BED • 2 BATH • 1707 SQ. FT.

2864H32101



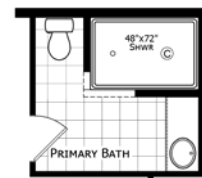
Opt. Porch



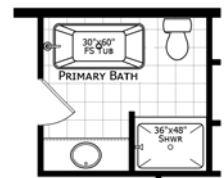
Opt. Ultimate Kitchen 2



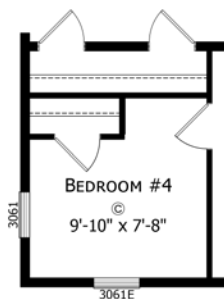
Opt. Family Room Offset



Opt. Serenity Bath



Opt. Primary Bath



Opt. Bedroom 4



Take a Virtual Tour!

PARAMOUNT 28' Sectionals

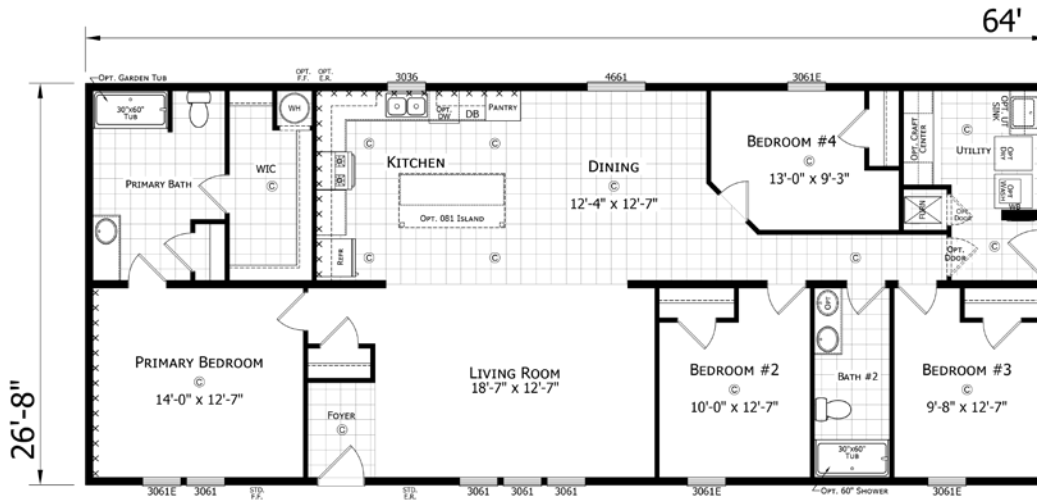


64' SUMMIT

4 BED • 2 BATH • 1707 SQ. FT.

2864H42A1C

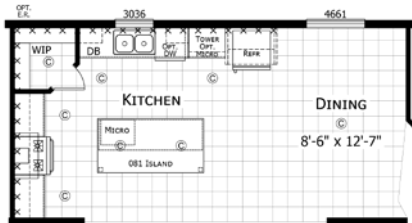
Also available in a 28' x 52',
28' x 56' and a 28 x 68'



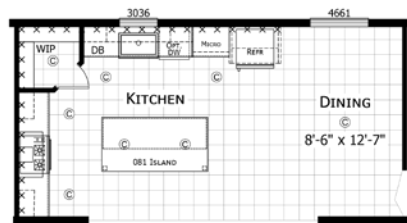
Opt. Primary Bath



Opt. Primary Bath 2



Opt. Summit Kitchen
Avail. w/ Stone Countertops



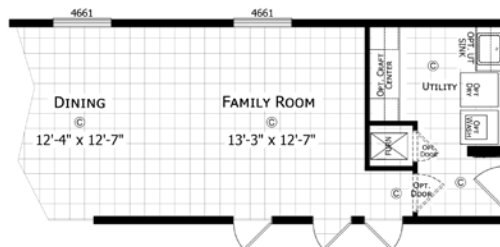
Opt. Ultimate Kitchen 2



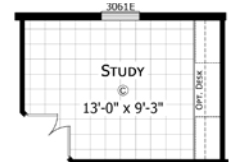
Opt. Utility Room "B"



Opt. Front Entry



Opt. Family Room
Avail. in the 64' & 68' Only



Opt. Study
Avail. in the 64' Only



**Take a
Virtual
Tour!**



PARAMOUNT 28' Sectionals

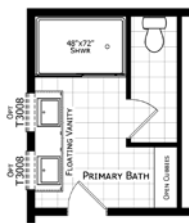
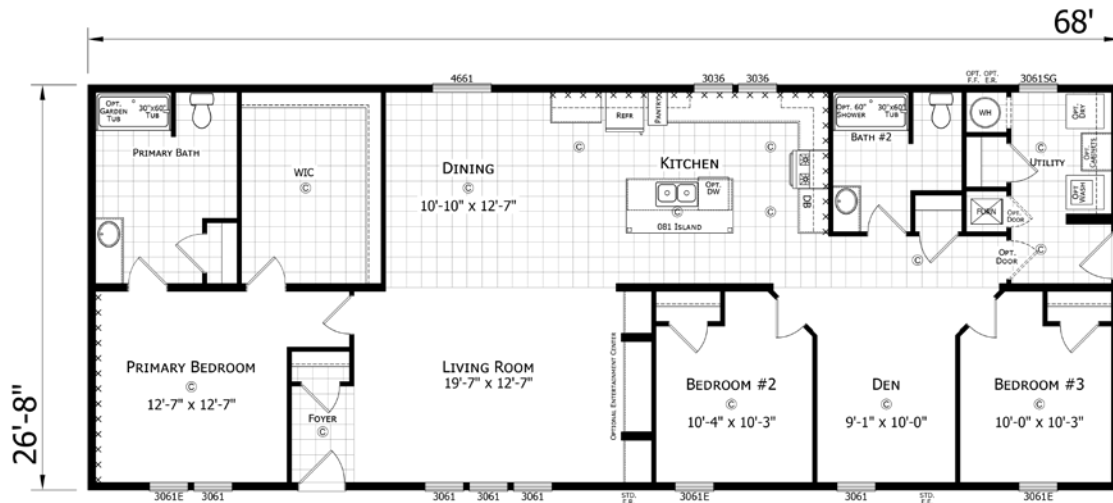
68' ODYSSEY



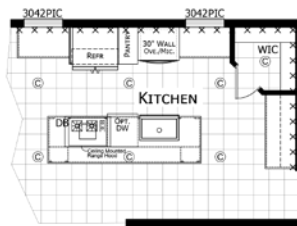
3 BED • 2 BATH • 1813 SQ. FT.

Also available in a 28' x 60'

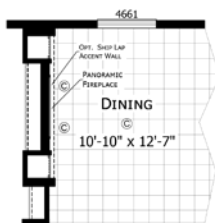
2868H32394



Opt.
Primary
Bath



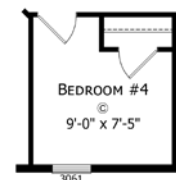
Opt.
Odyssey
Kitchen



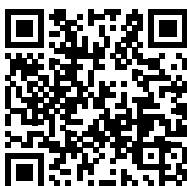
Opt.
Fireplace
Ent. Center



Opt.
Bath 2



Opt. Bedroom 4
Avail. in the 68' Only



**Take a
Virtual
Tour!**

PARAMOUNT 28' Sectionals



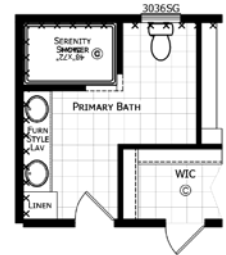
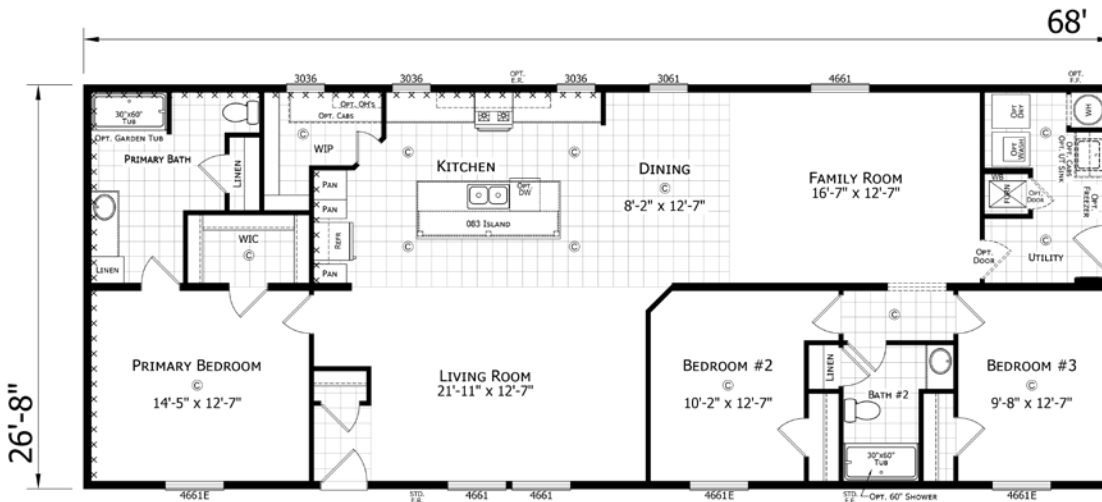
68' STAFFORD



3 BED • 2 BATH • 1813 SQ. FT.

2868H32179

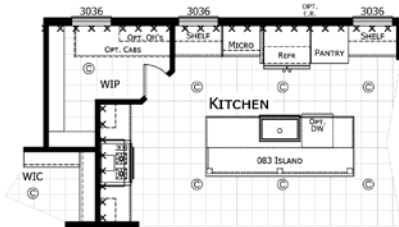
Also available in
a 28' x 72' and 28' x 76'



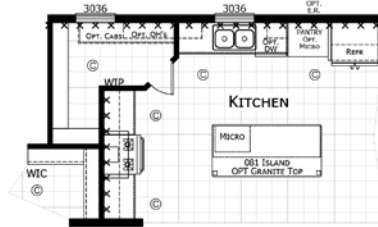
Opt. Serenity Bath



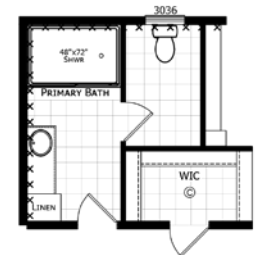
Opt. Master Bath



Opt. Ultimate Kitchen 2



Opt. Summit Kitchen

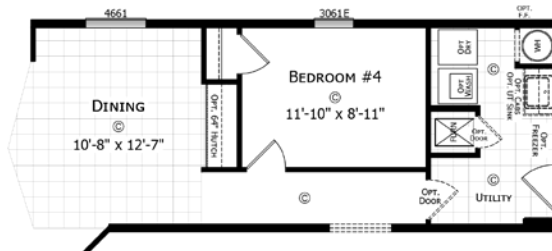


Opt. Luxe Shower

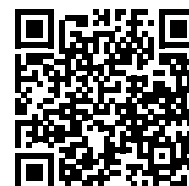


Opt. Ent. Wall

Requires Patio Door in Dining Room



Opt. Bedroom 4



Take a
Virtual
Tour!



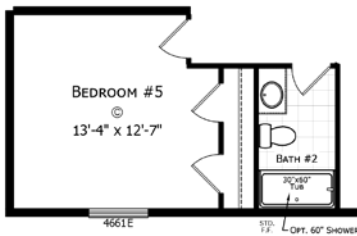
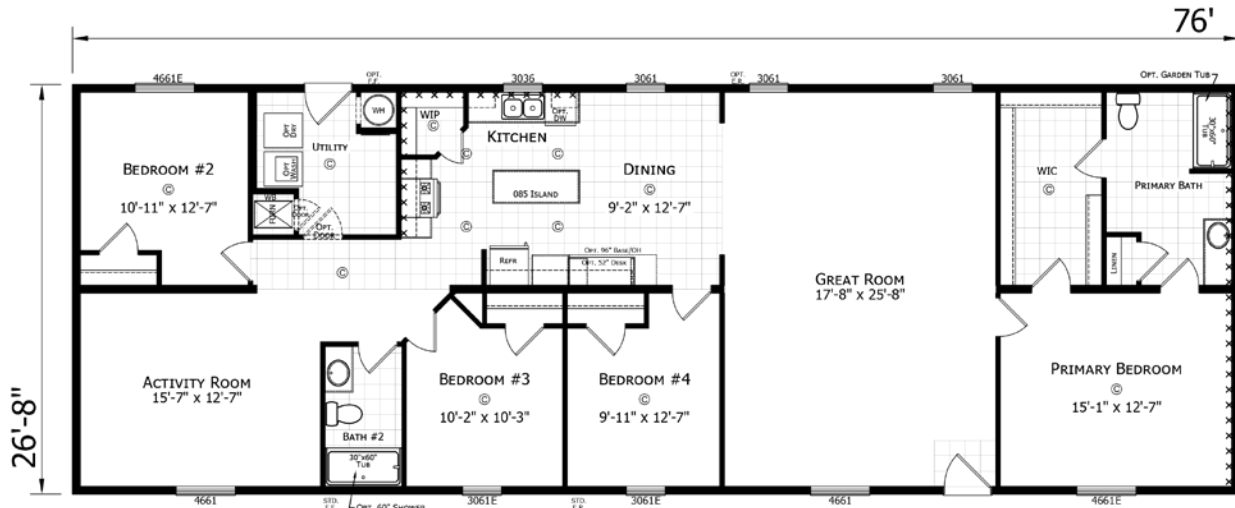
PARAMOUNT 28' Sectionals

BALDWIN

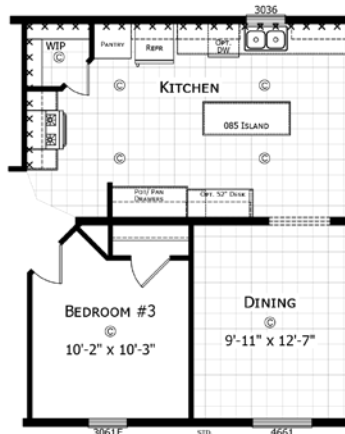


4 BED • 2 BATH • 2027 SQ. FT.

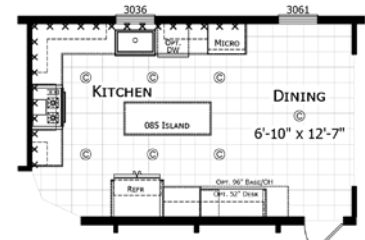
2876H42180



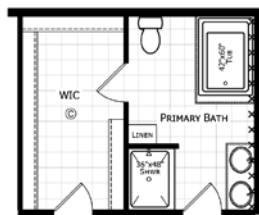
Opt. Bedroom 5



Opt. Kitchen w/ Formal Dining
In place of Bedroom 4



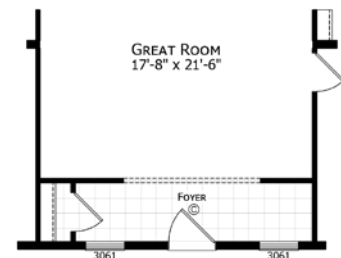
Opt. Ultimate Kitchen 2



Opt. Primary Bath



Opt. Serenity Bath



Opt. Foyer

PARAMOUNT 32' Sectionals

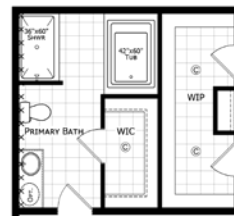


52' THORNTON

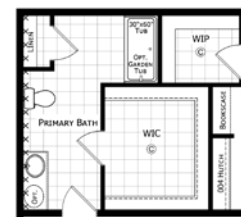
3 BED • 2 BATH • 1577 SQ. FT.

3252H32377

Also available
in a 32' x 56'



Opt. Primary
Bath 1



Opt. Primary
Bath 2



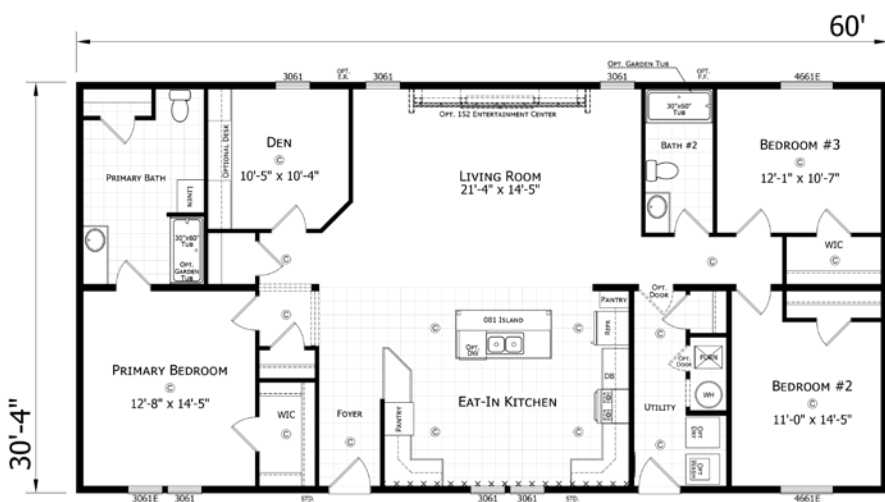
Opt.
Serenity
Bath

60' SHELBY

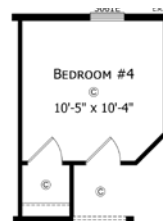
3 BED • 2 BATH • 1820 SQ. FT.

3260H32181

Also available in
a 32' x 64' and a 32' x 68'



Take a
Virtual Tour!



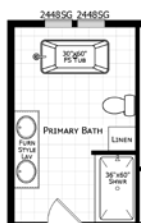
Opt. Bedroom 4



Opt. Dining Room



Opt. Serenity Bath



Opt. Master Bath



Opt. End Entry



Opt. Ultimate Kitchen 2



PARAMOUNT 32' Sectionals



Take a Virtual Tour!

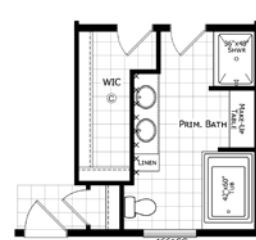
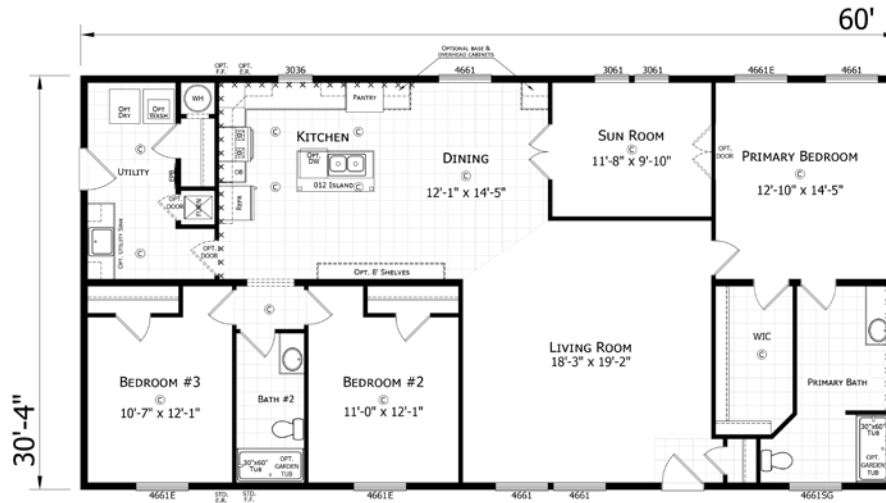
60' FENTON



3 BED • 2 BATH • 1820 SQ. FT.

Also available in a 32' x 64' and a 32' x 68'

3260H32182



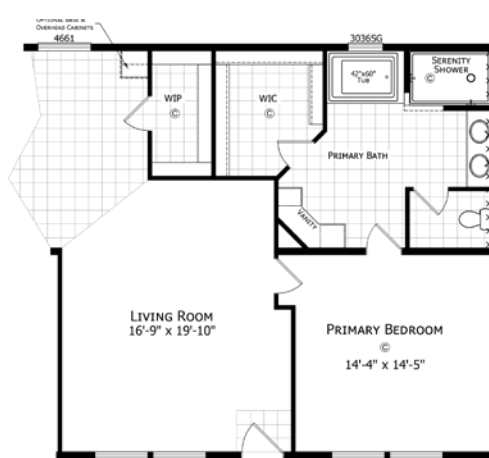
Opt. Primary Bath 1



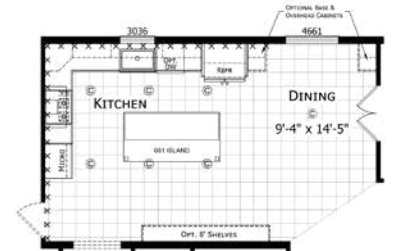
Opt. Serenity Bath 2



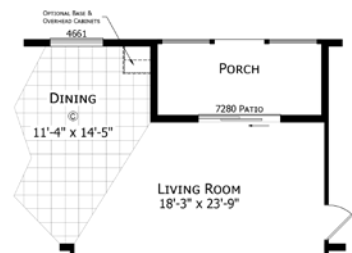
Opt. Primary Bath 3
No Sunroom



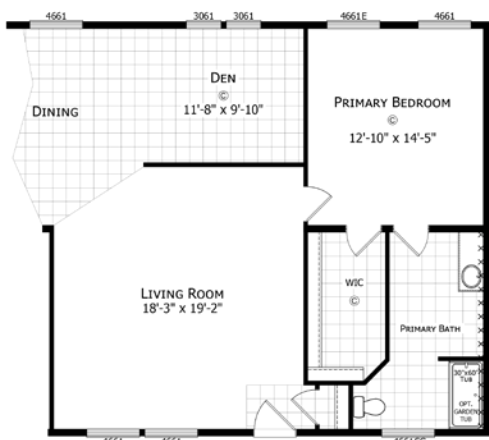
Opt. Serenity Bath 1
No Sunroom



Opt. Ultimate Kitchen 2



Opt. Porch



Opt. Den



Opt. Radiant Spa Bath
No Sunroom

Opt. Electric Fireplace
and Opt. Hutch
with Primary Bath 3,
Serenity Bath 1 or Radiant Spa

PARAMOUNT 32' Sectionals



TIMBERLAKE

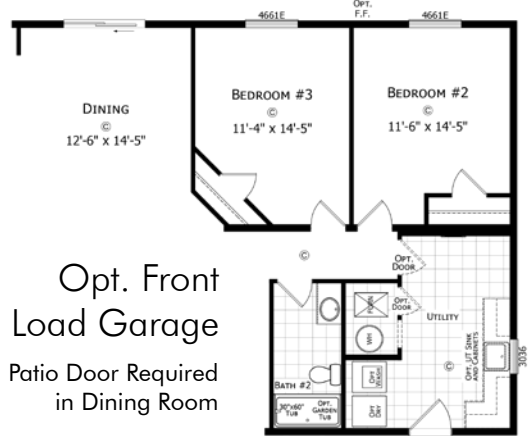
3 BED • 2 BATH • 1820 SQ. FT.

3260H32207

**NEW
MODEL!**



Opt. Primary Bath



Opt. Front Load Garage
Patio Door Required in Dining Room



Opt. Summit Kitchen
Avail. w/ Stone Countertops



Opt. Serenity Bath



Opt. Serenity Bath 2



Opt. Ultimate Kitchen 2



**Take a
Virtual
Tour!**

PARAMOUNT 32' Sectionals

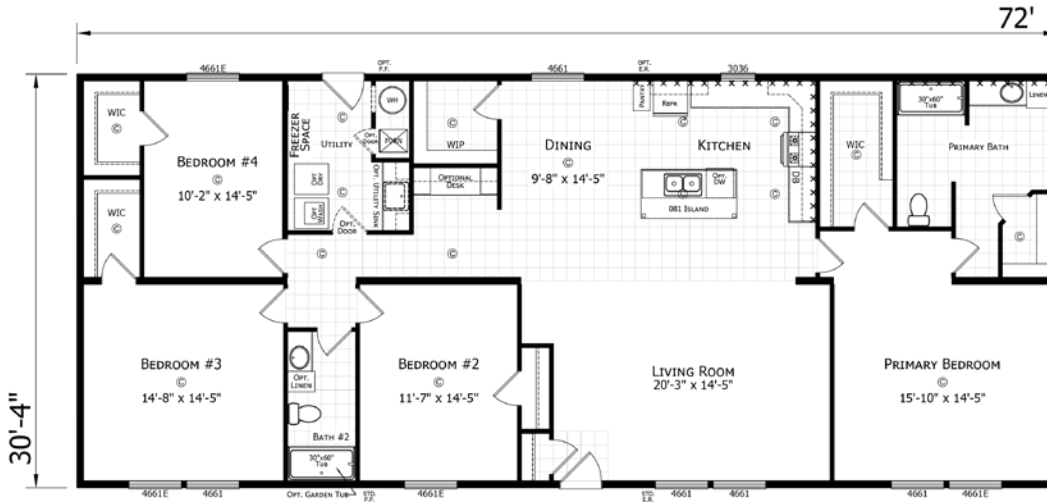


72' APOLLO

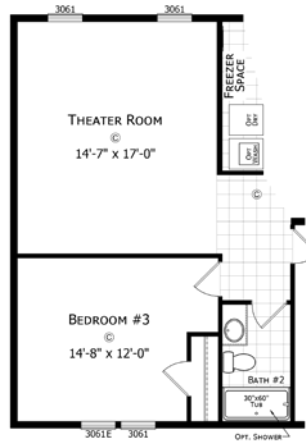
4 BED • 2 BATH • 2184 SQ. FT.

Also available in a 32' x 76'

3272H42185



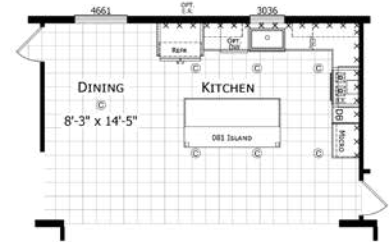
Opt. End Entry
N/A w Opt. Theater Room /Butler Pantry



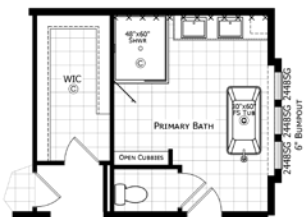
Opt. Theater Room



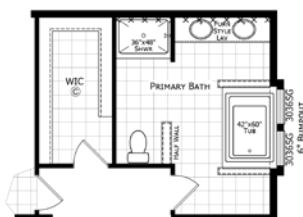
Opt. Ent. Center



Opt. Ultimate Kitchen 2



Opt. Radiant Spa Bath



Opt. Primary Bath



Opt. Serenity Bath



Opt. Closet Organizer



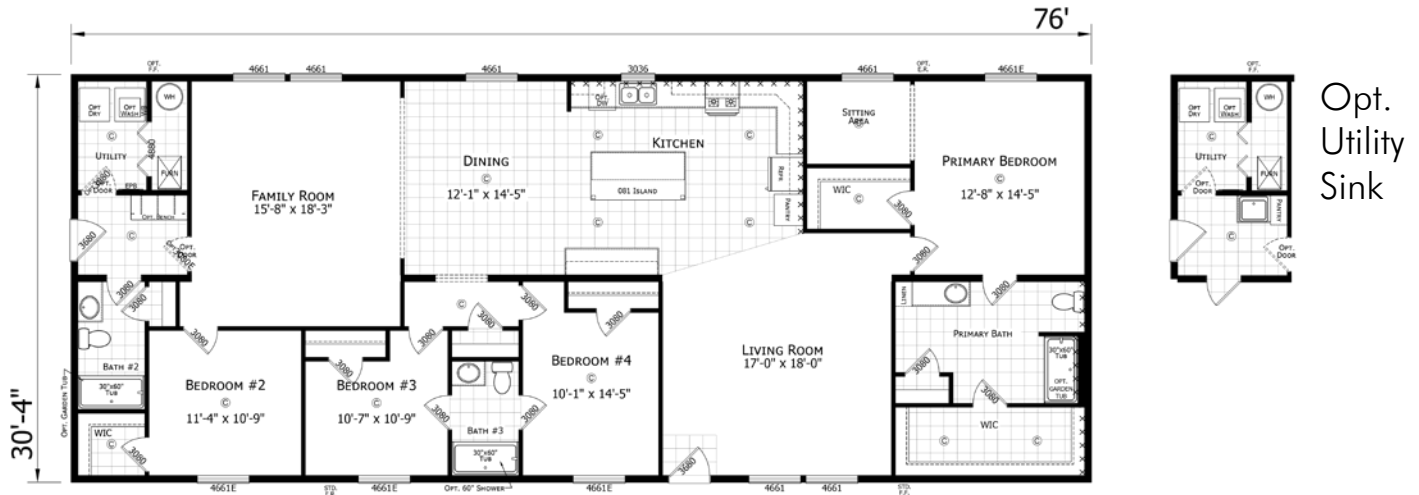
PARAMOUNT 32' Sectionals

RED CEDAR

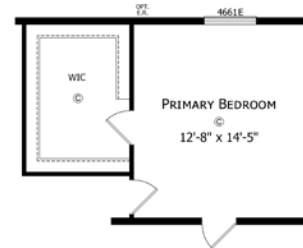


4 BED • 3 BATH • 2305 SQ. FT.

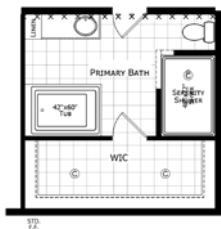
3276H43187



Opt. Ultimate Kitchen 2



Opt. Walk-In Closet



Opt. Serenity Bath



Opt. Primary Bath



Opt. Radiant Spa



Take a
Virtual
Tour

PARAMOUNT Sectionals

STANDARD FEATURES

STRUCTURAL

- Recessed Frame
- Detachable Hitch
- 48" OC Outriggers
- 2 x 4 Exterior Sidewalls - 16" OC
- (28') 2 x 6 Floor Joist - 16" OC
- (32') 2 x 8 Floor Joist - 16" OC
- R-11 Sidewall Insulation
- R-28 Roof Insulation
- 5/8" OSB Decking
- 7/16" OSB Roof Sheathing
- 30lb PSF Roof Load
- R-11 Floor Insulation
w/ extra row R11 outside I beam

EXTERIOR

- 8' Sidewalls
- Nominal 3/12 Roof Pitch
- 25 Year Shingles
- Storm Board Sheathing
- Double 4" Vinyl Siding
- White Aluminum Fascia
- White Vented Soffit
- Black Torch Light - Exterior Doors
Upgrade Ice & Water Shield

WINDOWS & DOORS

- 6 Panel Residential Front Door (no storm)
- 6 Panel Residential Rear Door (no storm)
- Low "E" Vinyl Gridless Windows
- 30" 2 Panel White Raised Panel Interior Doors
- 2-Mortised Hinges
- Black Hinges & Interior Door Knobs
- 3 Side Door Stop

INTERIOR FINISH

- Flat Ceilings
- Main Panel T/O
- Factory Designer Choice
- Accent Panels - VBP
(Choice 1 Pattern Per House)
- 15 oz. Carpet
- Tack Strip
- 5lb Rebond Carpet Pad
- Linoleum - Choice of Color
- Wire Shelving in Closets
- Smoke Alarms w/ Battery Backup
- Flat Wrapped Door Casing
- Flat Ceiling Cove
- Wrapped Door Jambs
- Wrapped Window Jambs
- Formica Countertops - Choice of Color
- Self Edge Countertops
- Finished Closets T/O

KITCHEN / BATHROOMS

- Black Standard Electric Range
- Black 30" Range Hood
- Black 18 CF Over/Under Refrigerator
- 30" Lined O/H Cabs w/ Fixed Shelves
- Wrapped Shaker Cabinets
- Corner Kitchen Cabinet (VBP)
- Center Shelves in Base (Kitchen VBP)
- Wrapped Cabinet Stiles
- Single Bank of Drawers - Kitchen
- Shelf Over Refrigerator
- Extendable Deluxe Drawer Guides
- 7" Stainless Steel Kitchen Sink
- Black Metal Faucets T/O
- 60" Fiberglass Tub/Shower Combo
- Round Commode
- Single Bank of Drawers - Baths - VBP
- China Lav Bowls
- 36" High Bath Lav Base Cabinet
- Lighted Bath Fans

HEATING / PLUMBING / ELECTRICAL

- Electric Furnace
- Aluminum Heat Ducts
- In-Line Floor Registers
- 200 AMP Service
- (1) Exterior Recept
- All Copper Wiring
- Plumb for Washer
- Wire for Electric Dryer
- PEX Water Lines
- 30 Gallon Electric Water Heater
- (1) Frost Free Exterior Faucet
- Main Water Shut Off
- Water Shut Offs Throughout
- Can Lights Per Print
- 3-Bulb Strip Lights @ Bath Lavs
- Programmable Thermostat
- Extra Conduit Drop In Panel Box

VBP=Varies by plan

ALL Redman Homes are backed by a 7 YEAR WARRANTY

Due to continuous product development and improvement, prices, specifications and material are subject to change without notice or obligation. Square footage and other dimensions are approximate. Included images are artist renderings and are not intended to be an accurate representation of the homes. Renderings and Floor Plans may be shown with optional features and / or third party additions that may not be available in all regions or situations. Exterior Renderings may include onsite builder built options not offered by Champion Home Builders, Inc.

PARAMOUNT

Sectionals



by



CHAMPION
HOMES

308 Sheridan Drive
Topeka, IN 46571

www.redmanhomesofindiana.com