

# PARAMOUNT

Singlewides



# About Us

Located in the Amish country of Northern Indiana where pride and craftsmanship run deep, we are recognized today for offering some of the highest-quality manufactured and modular homes in the Midwest. It's a recognition achieved by consistently delivering more than our customers might expect.

- More innovative quality features.
- More home styles and flexible floor plan designs.
- More helpful customer service.
- And most of all, more home for your money.

## Beyond just building you a house,

We're committed to providing you and your family with a home to make memories in that will last a lifetime. Somewhere you can feel secure. A place you can call your own. A home that fits your lifestyle and has your own personal touch. Whether you're an active young family constantly on the go or empty-nesters ready to simplify, just relax – we have a home that's right for you.

## More choice, more freedom

Our vast selection of floor plans, color choices and options give you the design choices you want to create a plan you'll truly enjoy. It's easy to create the home of your dreams.

## Confidence and trust

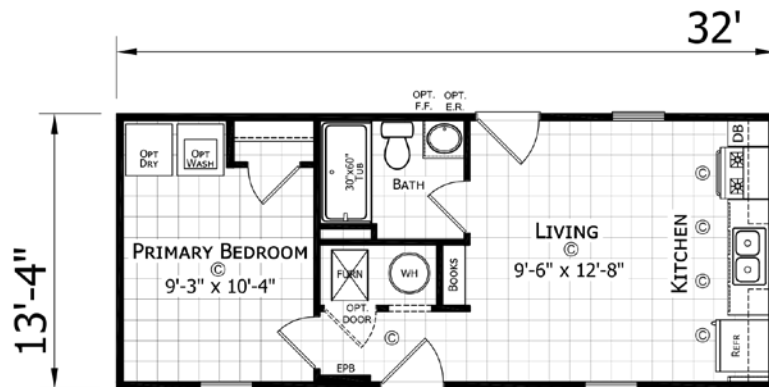
Over the years, we've built more than just homes. We've built homebuyer trust in our ability to satisfy their needs and we're confident we can provide you with a home that will meet your needs and exceed your expectations.



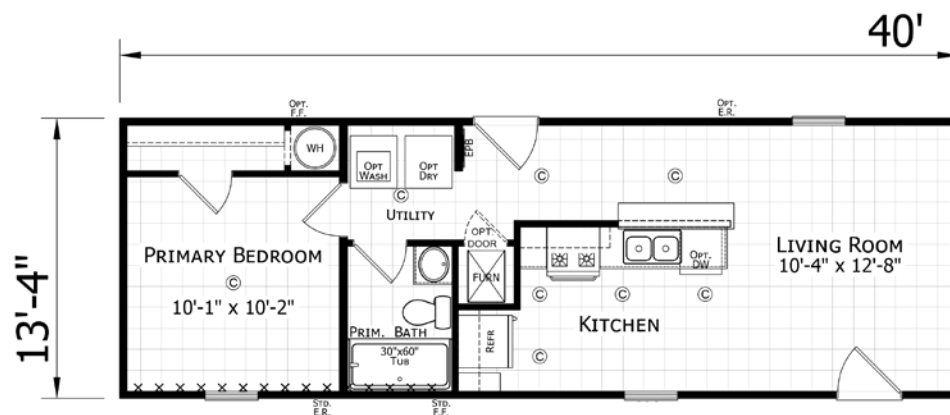
# PARAMOUNT 14' Singlewides



**1432H11214** ■ 1 BED • 1 BATH • 427 SQ. FT.



**1440H11065** ■ 1 BED • 1 BATH • 533 SQ. FT.

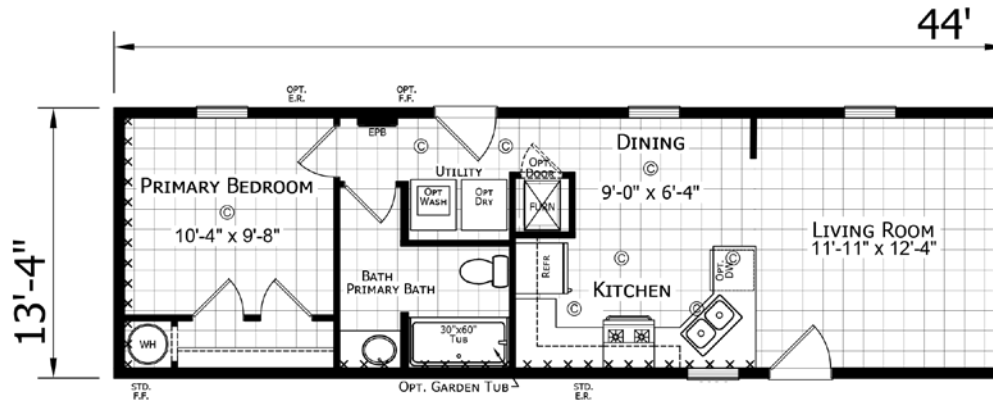


**NOTE:** Optional reverse aisle is available for most homes

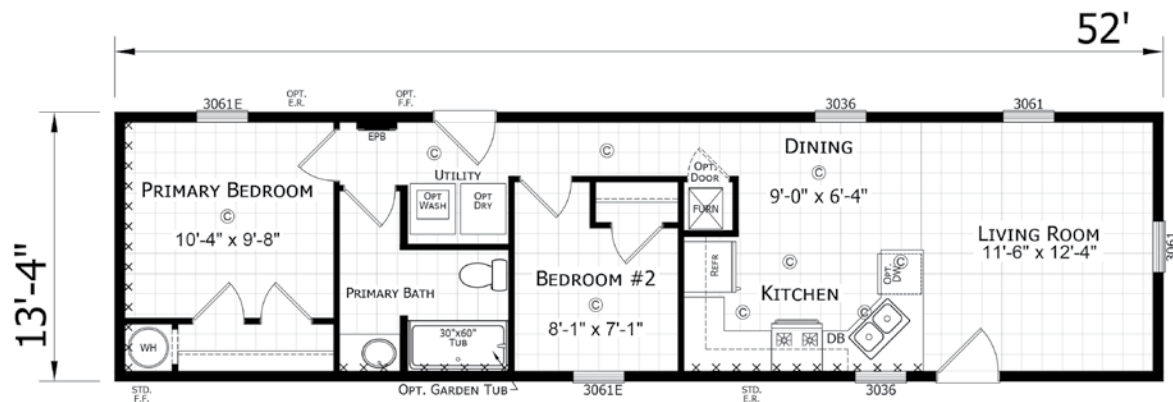


# PARAMOUNT 14' Singlewides

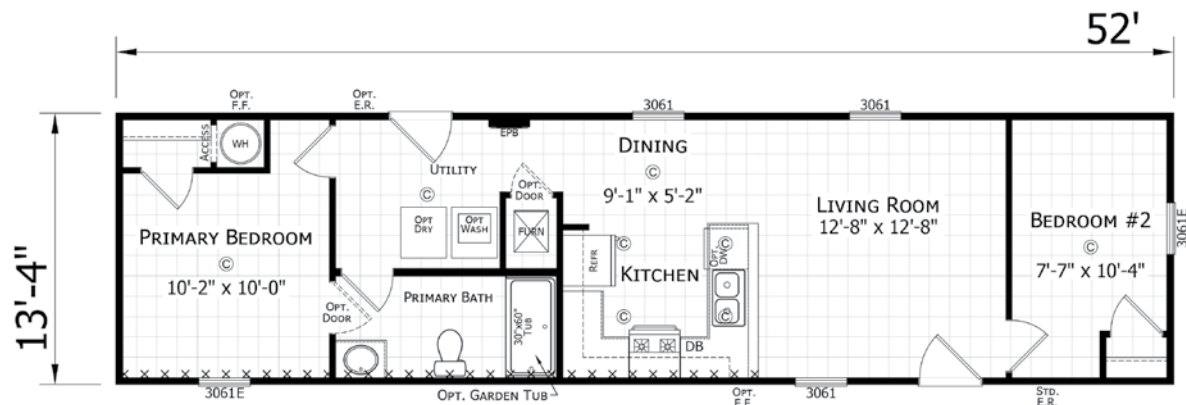
**1444H11023** ■ 1 BED • 1 BATH • 587 SQ. FT.



**1452H21023** ■ 2 BED • 1 BATH • 693 SQ. FT.



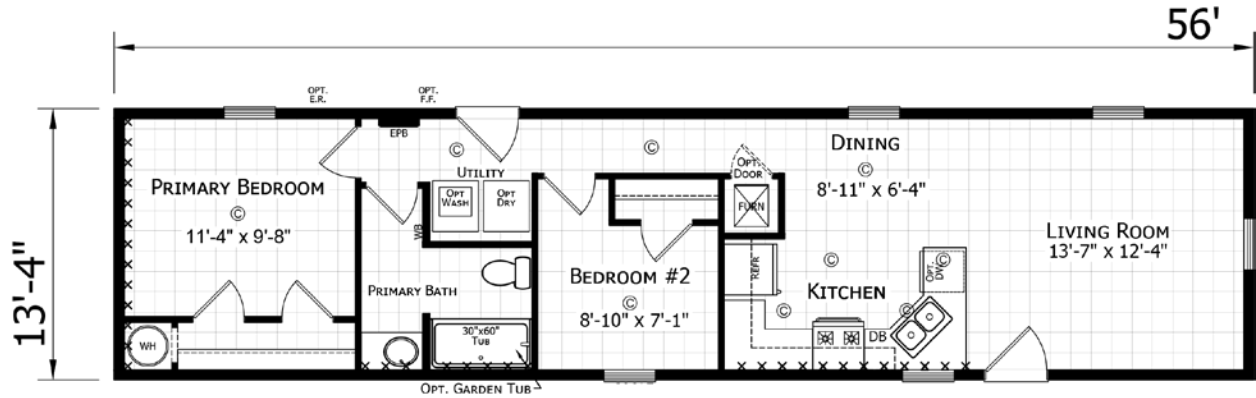
**1452H21081** ■ 2 BED • 1 BATH • 693 SQ. FT.



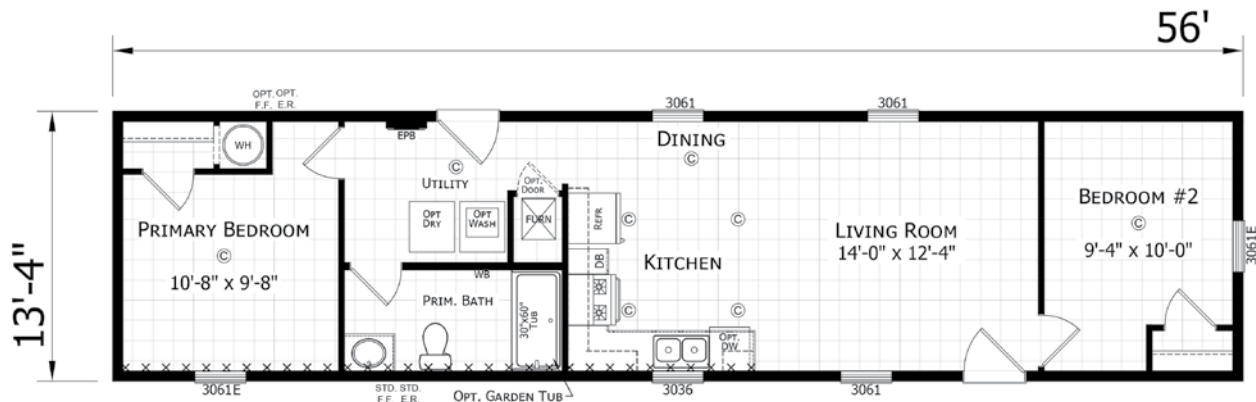
# PARAMOUNT 14' Singlewides



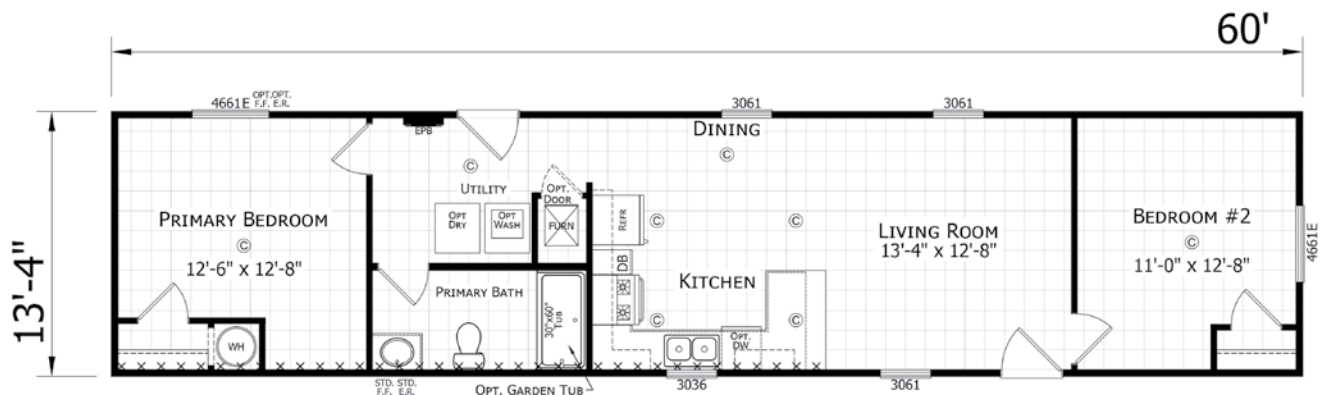
**1456H21023** ■ 2 BED • 1 BATH • 747 SQ. FT.



**1456H21030** ■ 2 BED • 1 BATH • 747 SQ. FT.



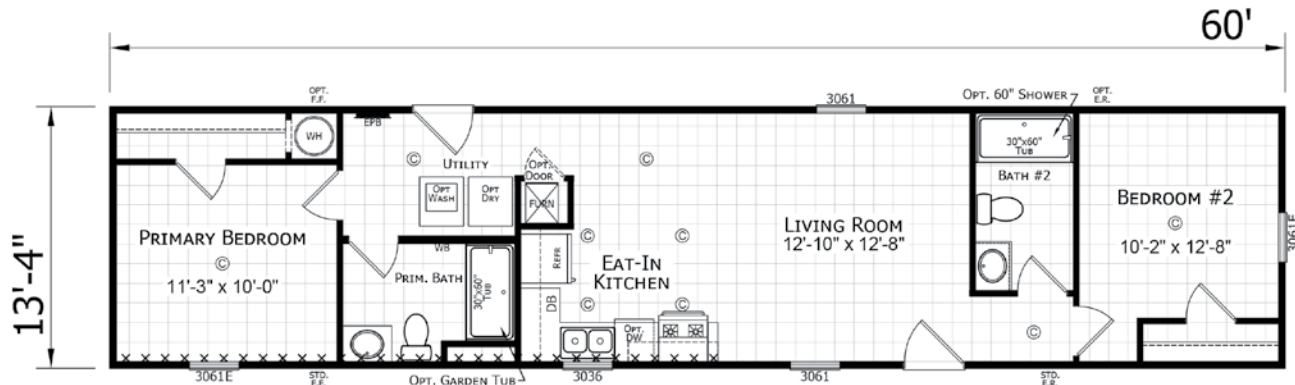
**1460H21216** ■ 2 BED • 1 BATH • 800 SQ. FT.



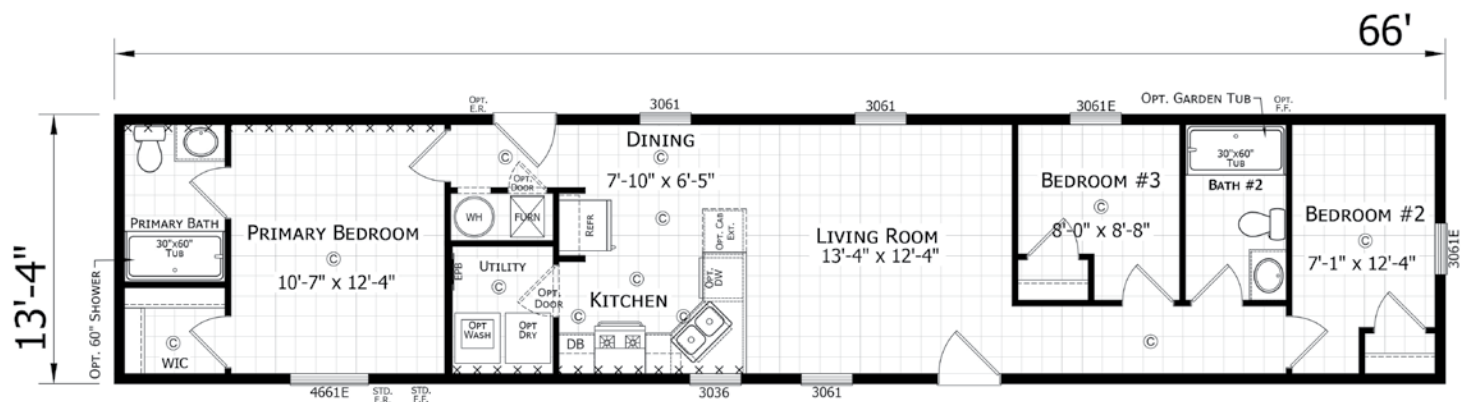


# PARAMOUNT 14' Singlewides

**1460H22215** ■ 2 BED • 2 BATH • 800 SQ. FT.

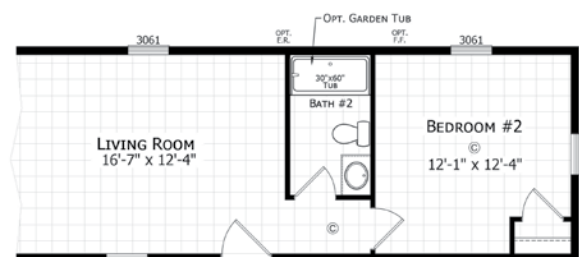


**1466H32082** ■ 3 BED • 2 BATH • 880 SQ. FT.



Take a  
Virtual Tour!

Opt.  
2 Bedroom

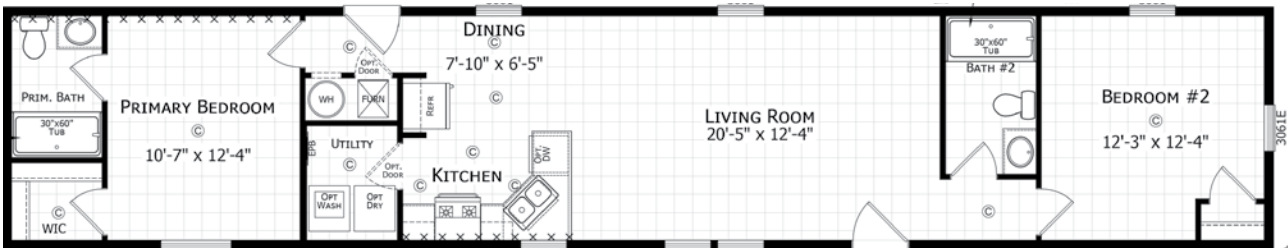
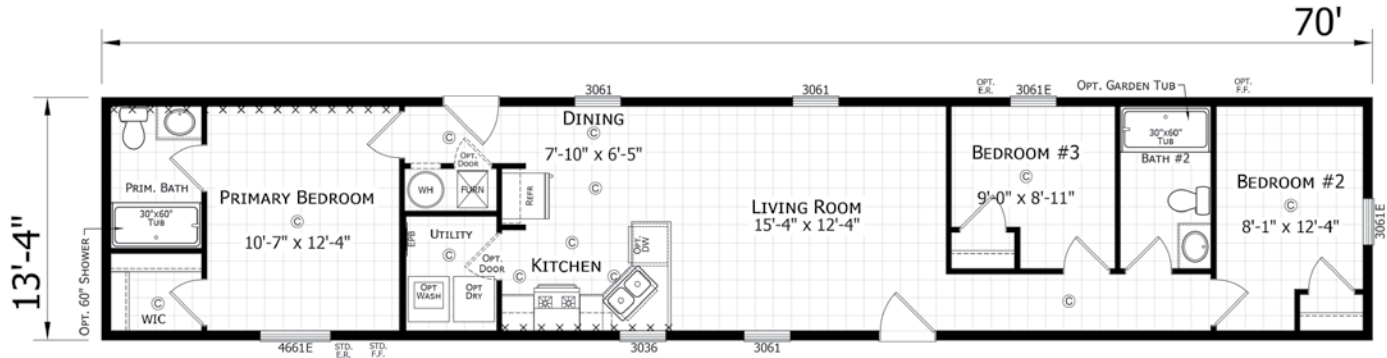




# PARAMOUNT 14' Singlewides



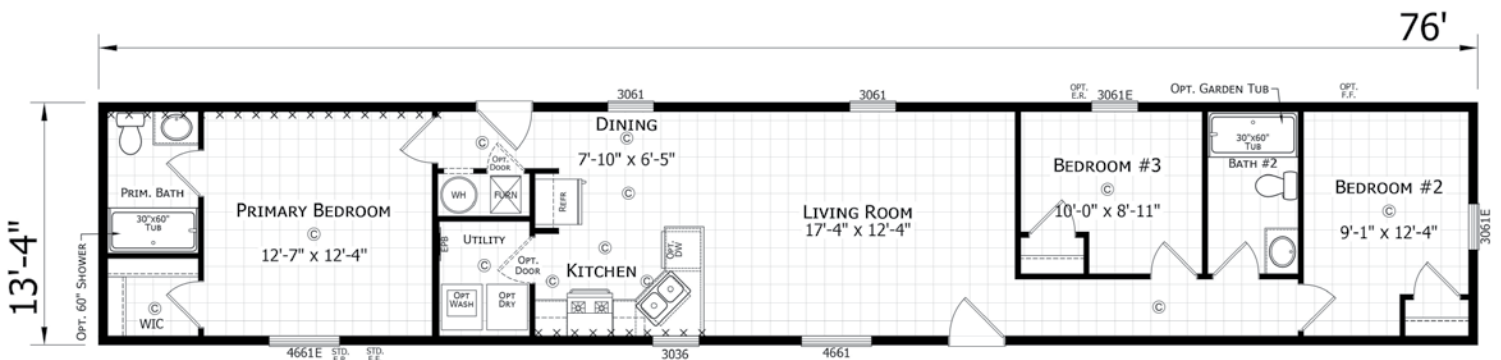
**1470H32082** ■ 3 BED • 2 BATH • 933 SQ. FT.



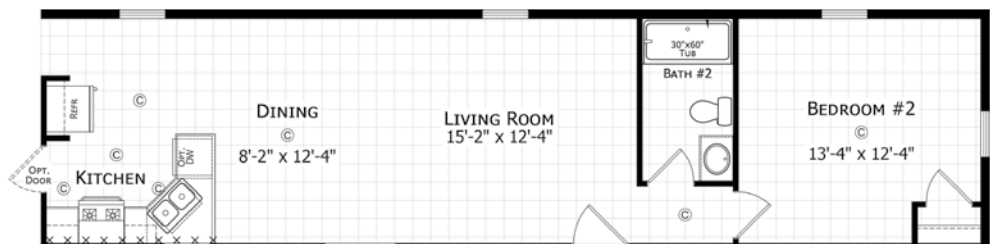
Opt. 2 Bedroom

**1476H32082** ■ 3 BED • 2 BATH • 1013 SQ. FT.

**Also available in 14'x72'**



Opt.  
2 Bedroom



Optional reverse aisle is available for most homes

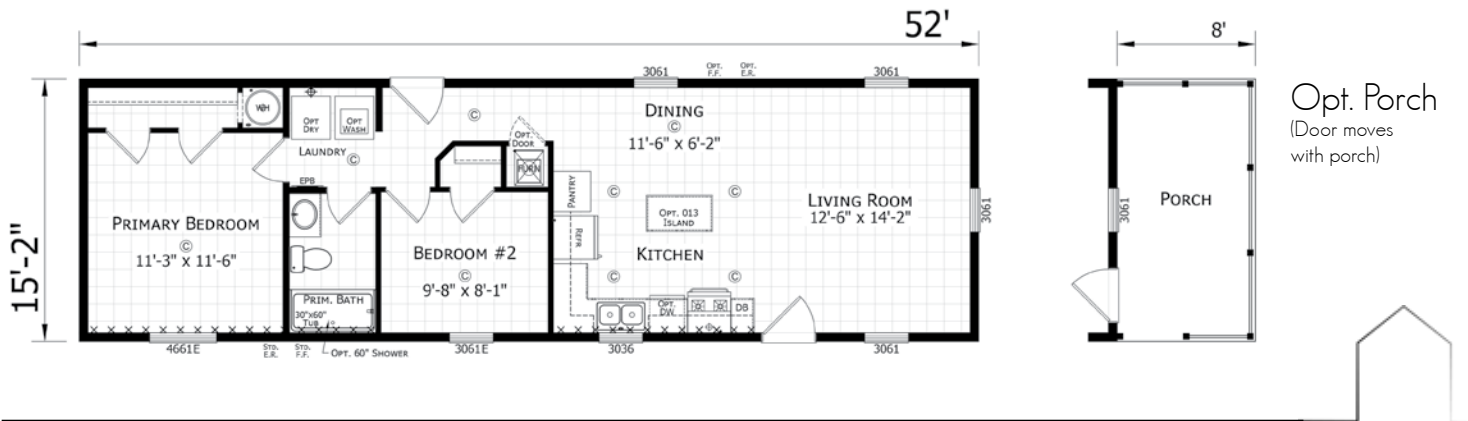




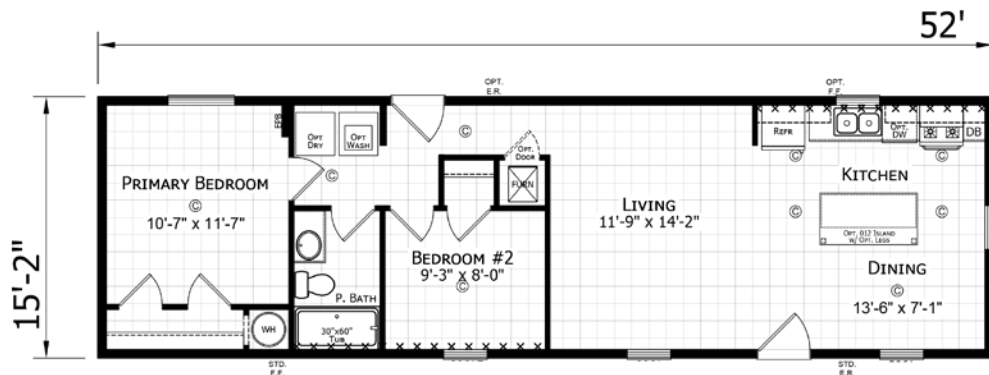
# PARAMOUNT 16' Singlewides



**1652H21083** ■ 2 BED • 1 BATH • 789 SQ. FT.



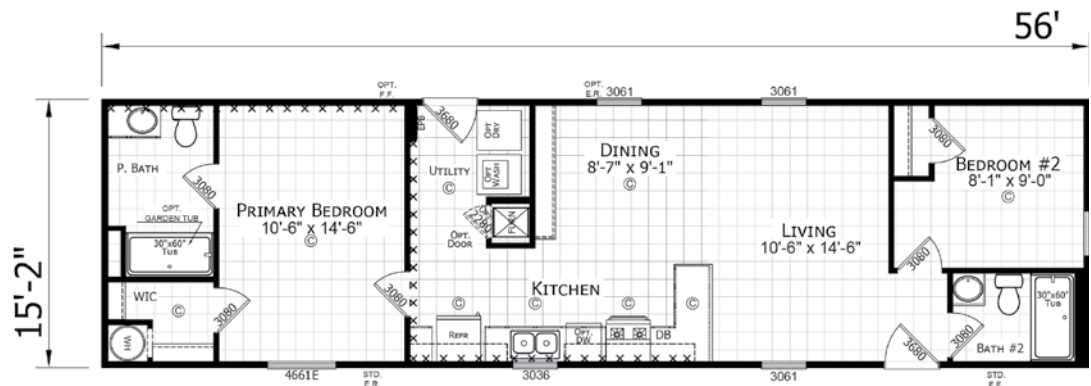
**1652H21151** ■ 2 BED • 1 BATH • 789 SQ. FT.



**1656H22208** ■ 2 BED • 2 BATH • 849 SQ. FT.



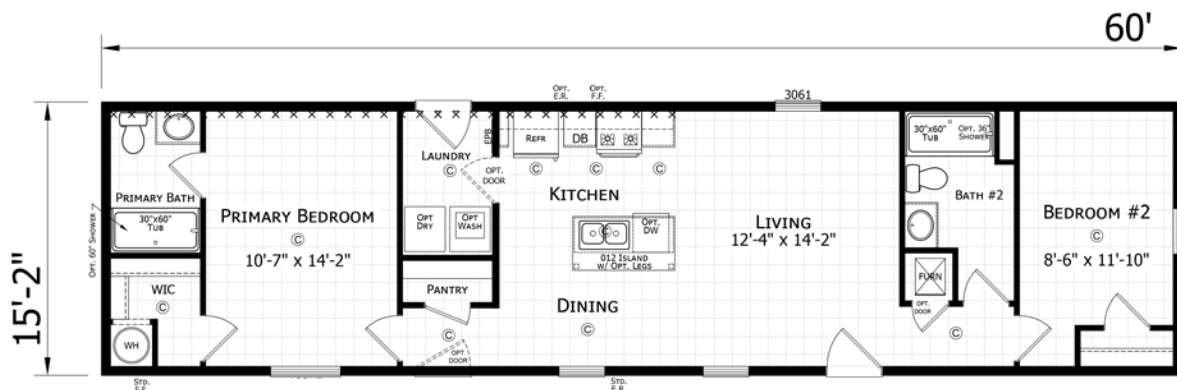
Take a  
Virtual Tour!



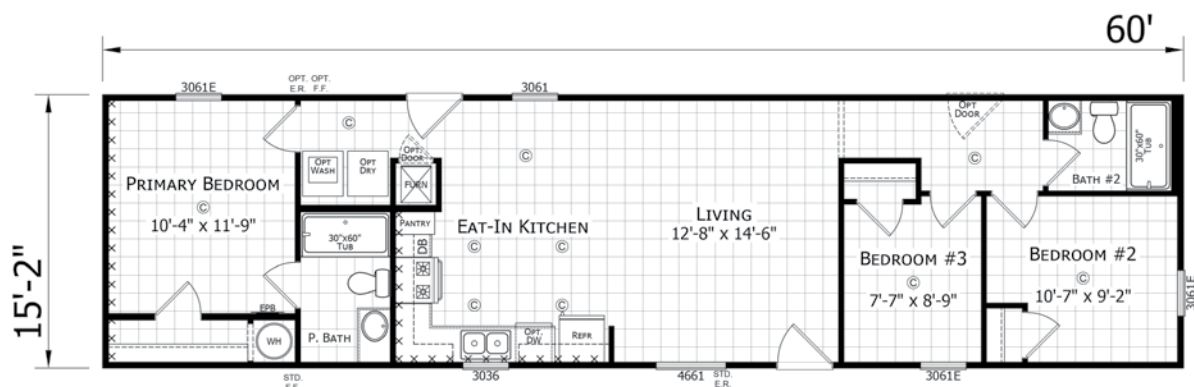


# PARAMOUNT 16' Singlewides

**1660H22212** ■ 2 BED • 2 BATH • 910 SQ. FT.

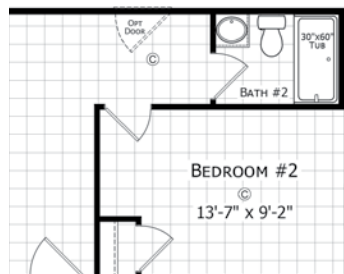


**1660H32206**



Take a  
Virtual Tour!

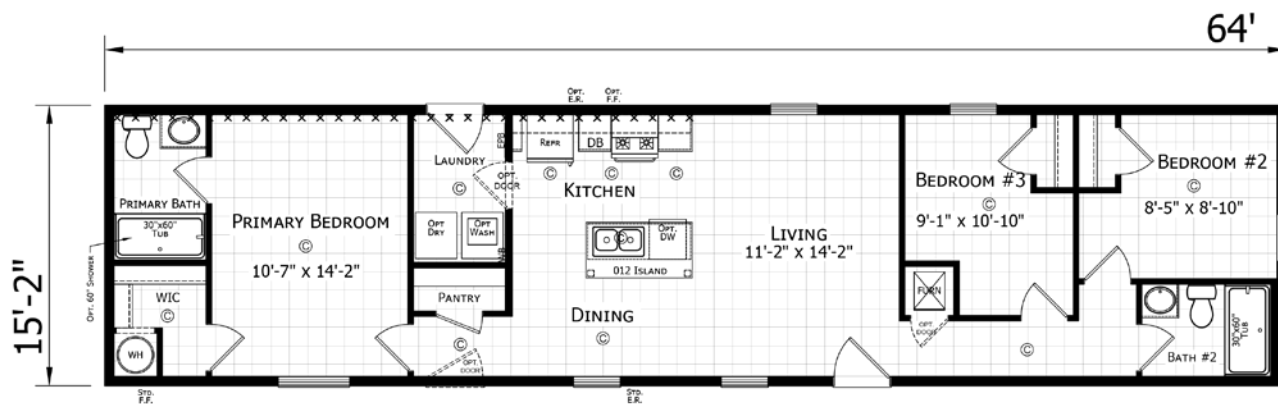
Opt.  
2 Bedroom



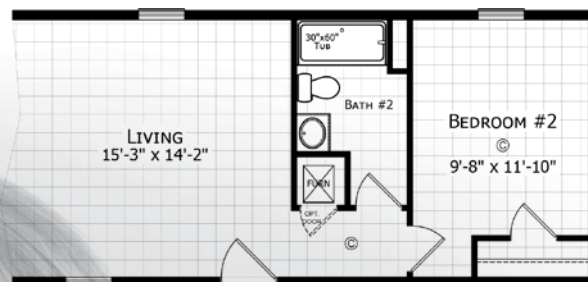
# PARAMOUNT 16' Singlewides



**1664H32212** ■ 3 BED • 2 BATH • 971 SQ. FT.



Opt.  
2 Bedroom

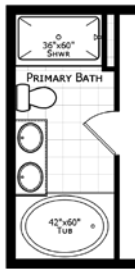
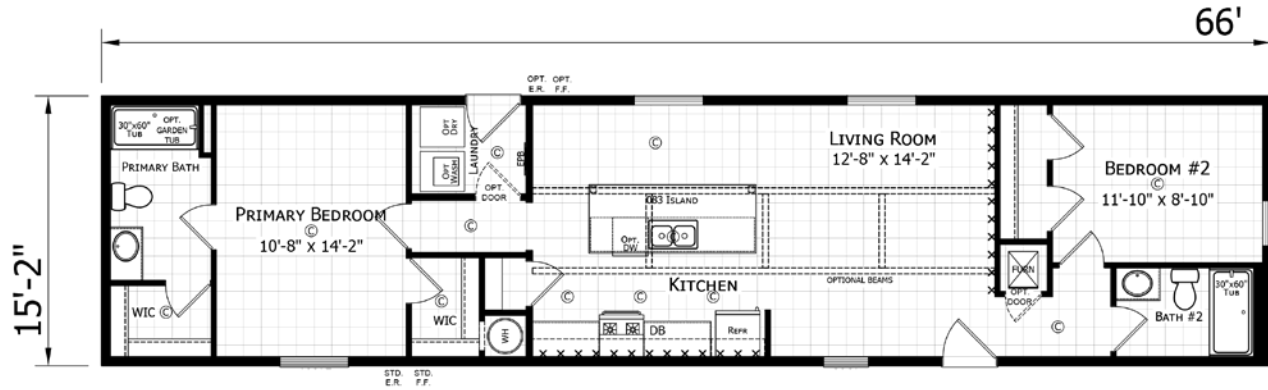


Optional reverse aisle is available for most homes



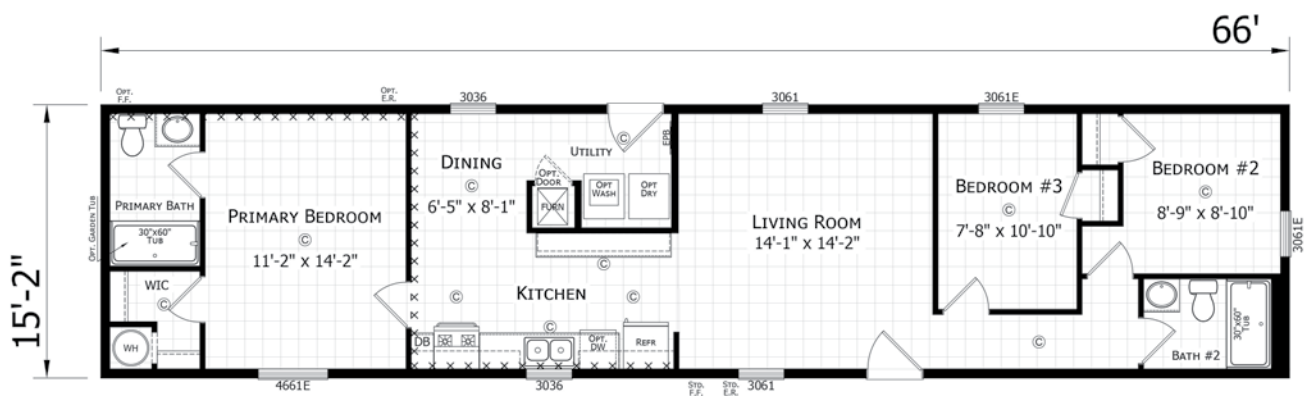
# PARAMOUNT 16' Singlewides

**1666H22091** ■ 2 BED • 2 BATH • 1001 SQ. FT.



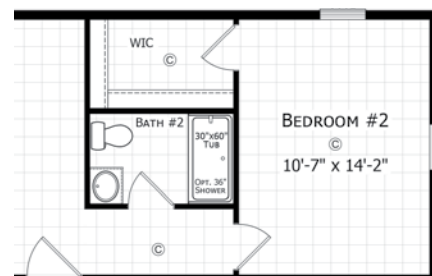
Opt.  
Primary  
Bath

**1666H32085** ■ 3 BED • 2 BATH • 1001 SQ. FT.



Take a  
Virtual Tour!

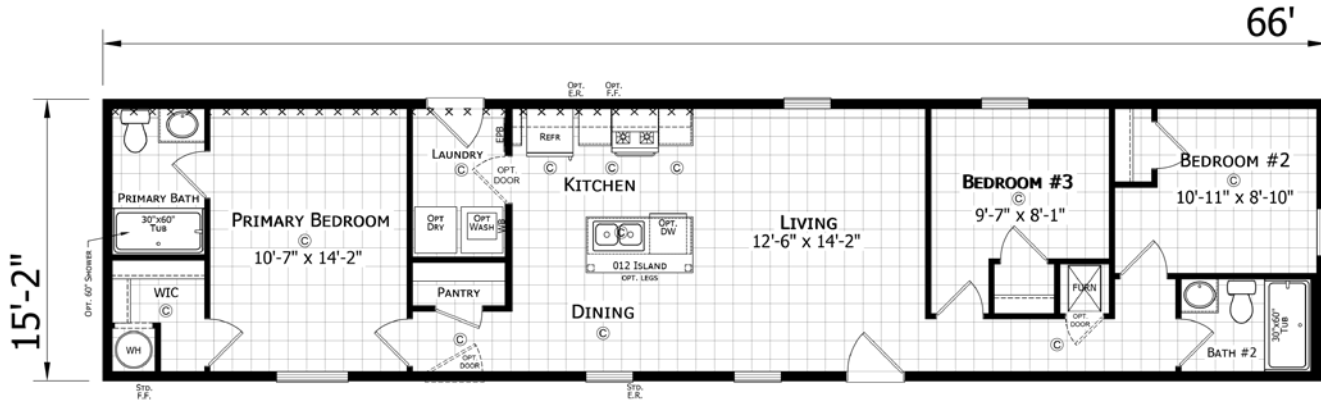
Opt.  
2 Bedroom



# PARAMOUNT 16' Singlewides

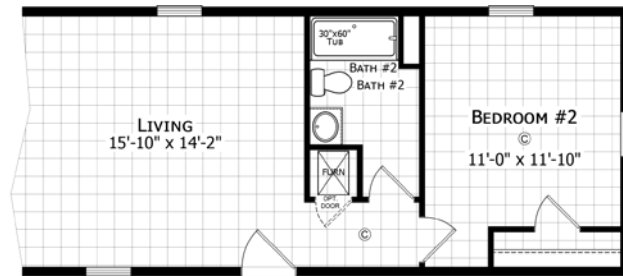


**1666H32212** ■ 3 BED • 2 BATH • 1001 SQ. FT.

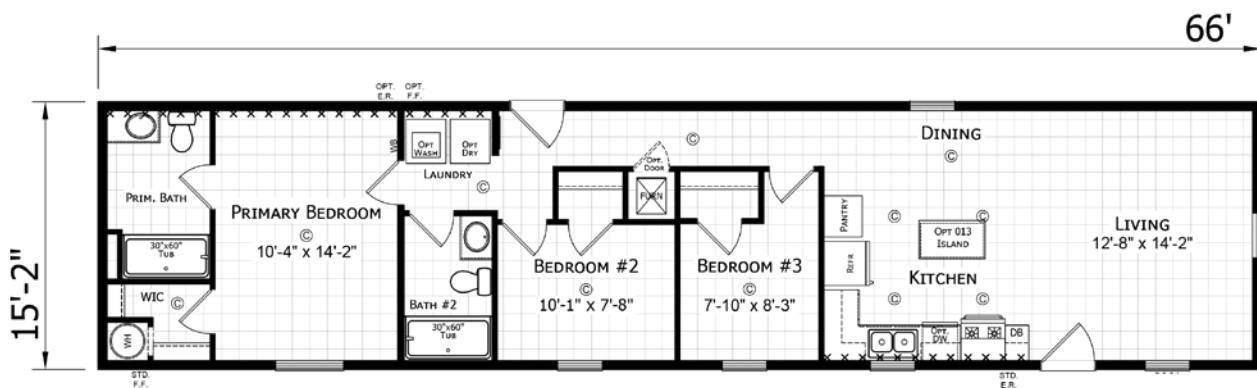


Take a  
Virtual Tour!

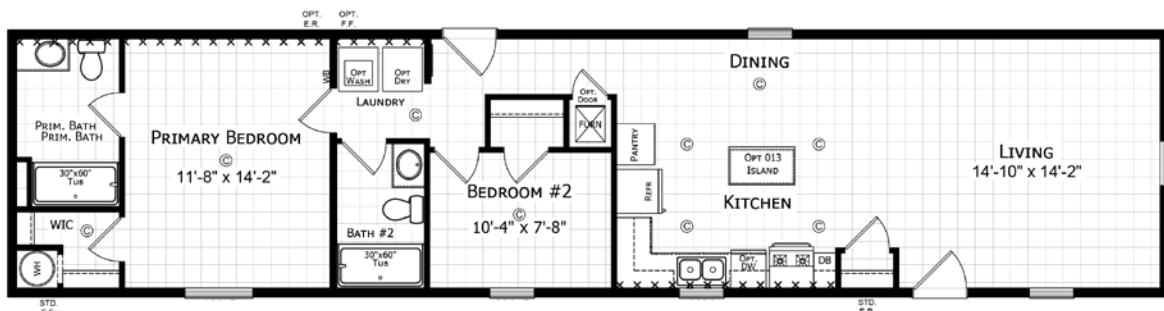
Opt.  
2 Bedroom



**1666H32217** ■ 3 BED • 2 BATH • 1001 SQ. FT.



Opt.  
2 Bedroom



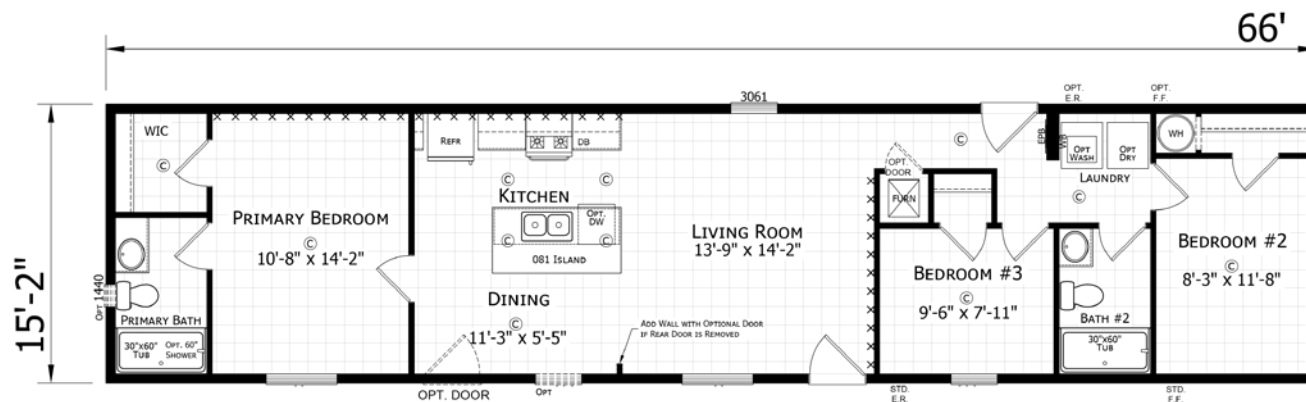
Optional reverse aisle is available for most homes



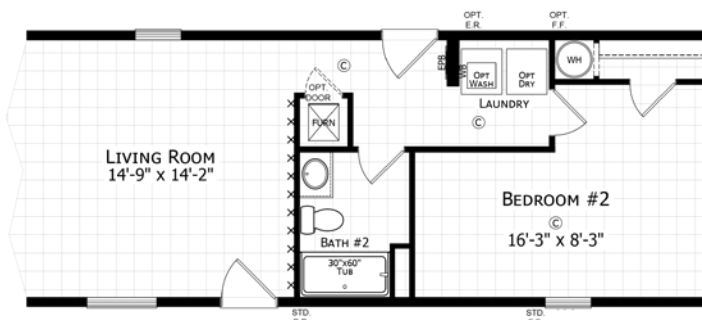


# PARAMOUNT 16' Singlewides

**1666H32219** ■ 3 BED • 2 BATH • 1001 SQ. FT.



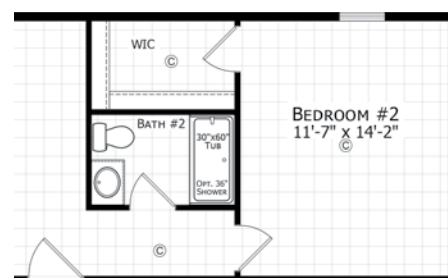
Opt.  
2 Bedroom



**1668H32085** ■ 3 BED • 2 BATH • 1031 SQ. FT.



Opt.  
2 Bedroom

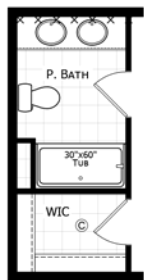
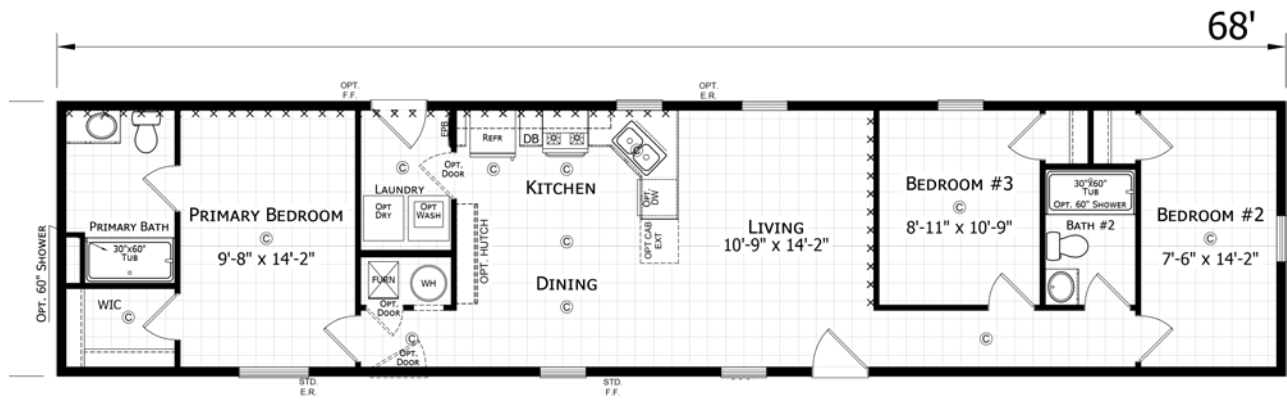


Take a  
Virtual Tour!

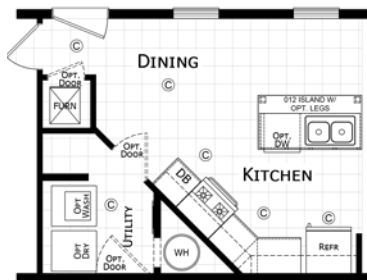
# PARAMOUNT 16' Singlewides



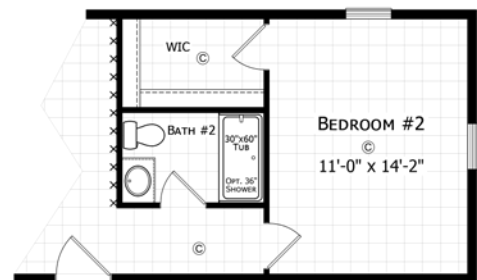
**1668H32087** ■ 3 BED • 2 BATH • 1031 SQ. FT.



Opt.  
Primary  
Bath

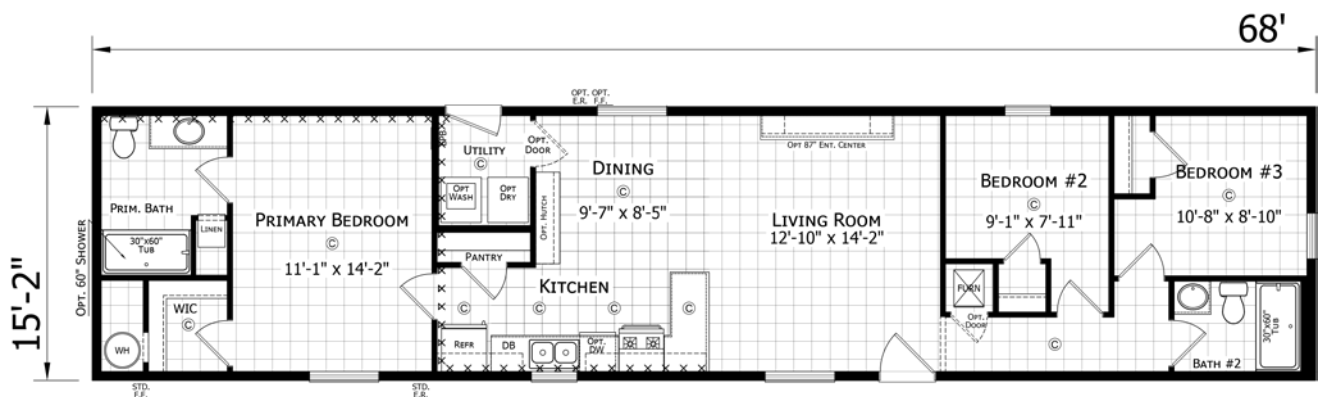


Opt. Kitchen



Opt. 2 Bedroom

**1668H32220** ■ 3 BED • 2 BATH • 1031 SQ. FT.



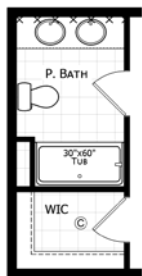


# PARAMOUNT 16' Singlewides

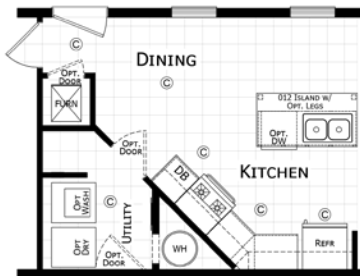
1672H32087



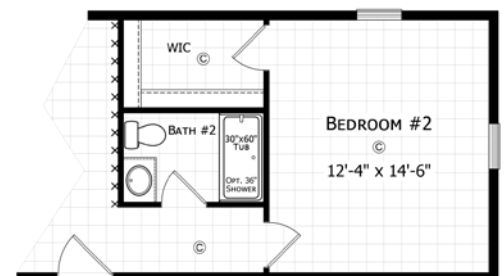
3 BED • 2 BATH • 1092 SQ. FT.



Opt.  
Primary Bath



Opt. Kitchen

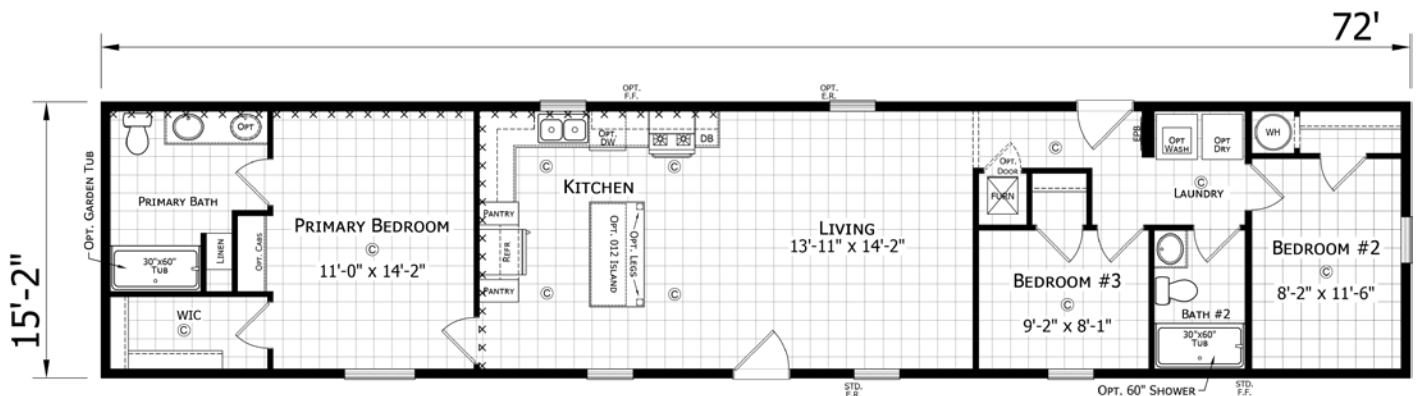


Opt. 2 Bedroom

1672H32090



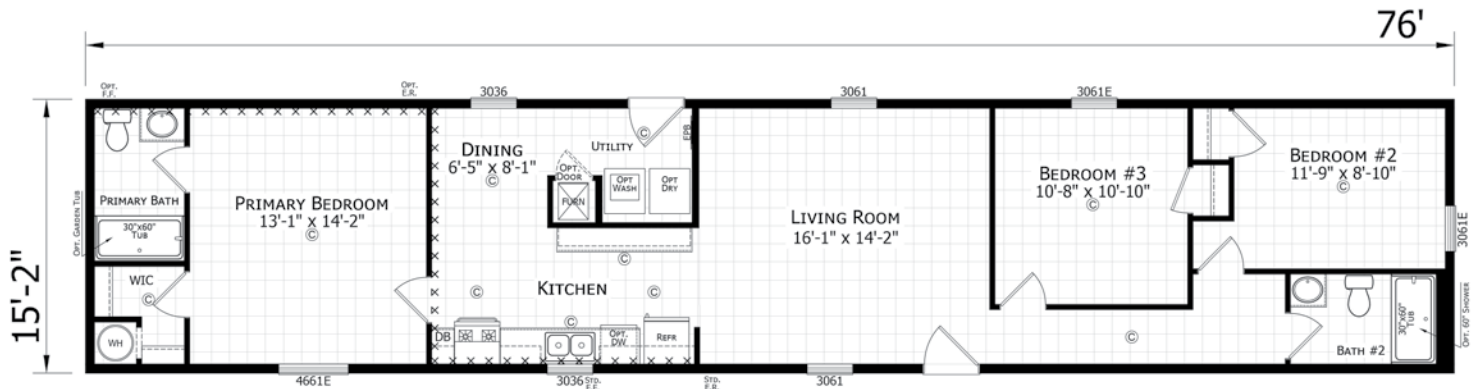
3 BED • 2 BATH • 1092 SQ. FT.



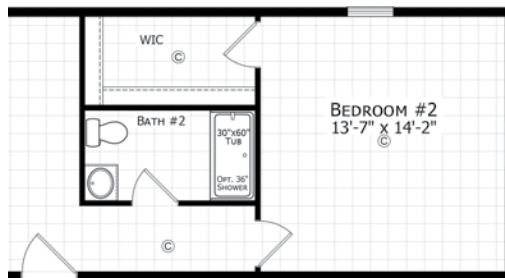
# PARAMOUNT 16' Singlewides



**1676H32085** ■ 3 BED • 2 BATH • 1153 SQ. FT.



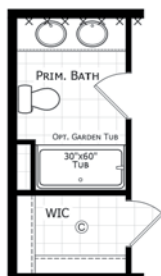
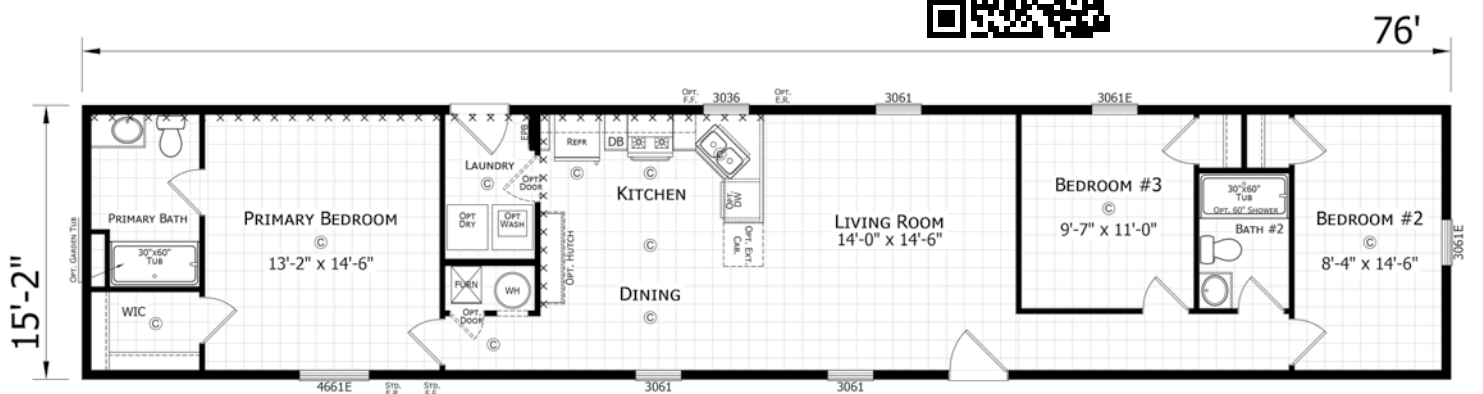
Opt.  
2 Bedroom



**1676H32087** ■ 3 BED • 2 BATH • 1153 SQ. FT.

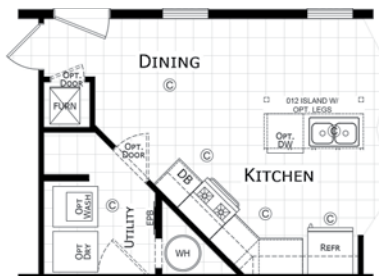


Take a  
Virtual Tour!

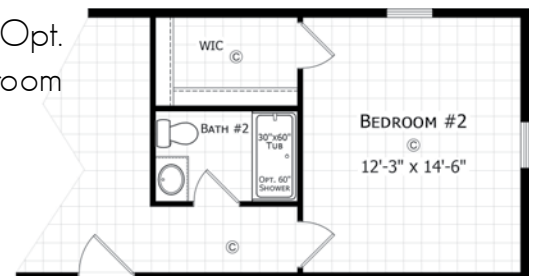


Opt.  
Master  
Bath

Opt.  
Kitchen



Opt.  
2 Bedroom

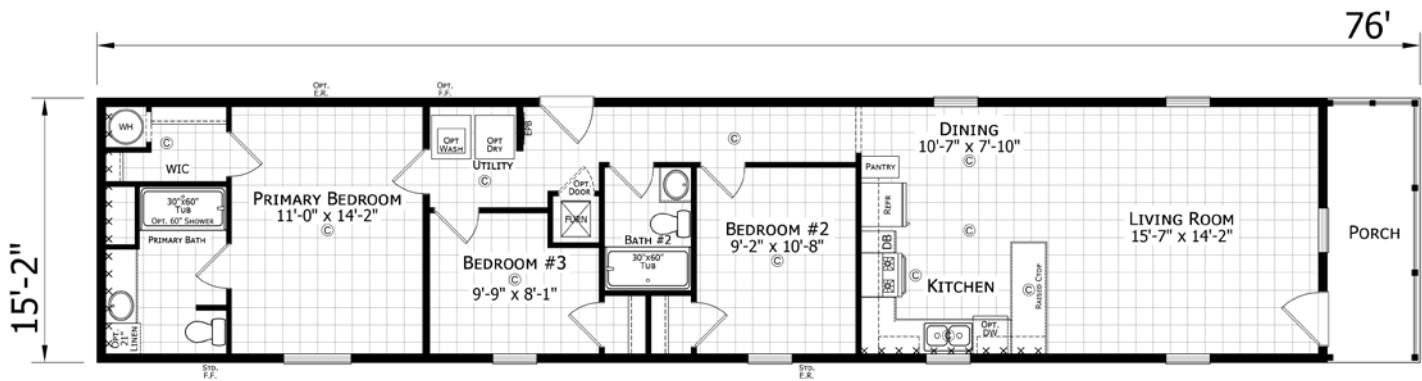


Optional reverse aisle is available for most homes



# PARAMOUNT 16' Singlewides

**1676H32089** ■ 3 BED • 2 BATH • 1071 SQ. FT.

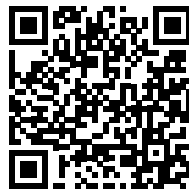


Opt. 2 Bedroom

Take a  
Virtual Tour!



Opt.  
Serenity  
Shower



**J. REDMAN  
HOMES.**

by   
**CHAMPION  
HOMES**





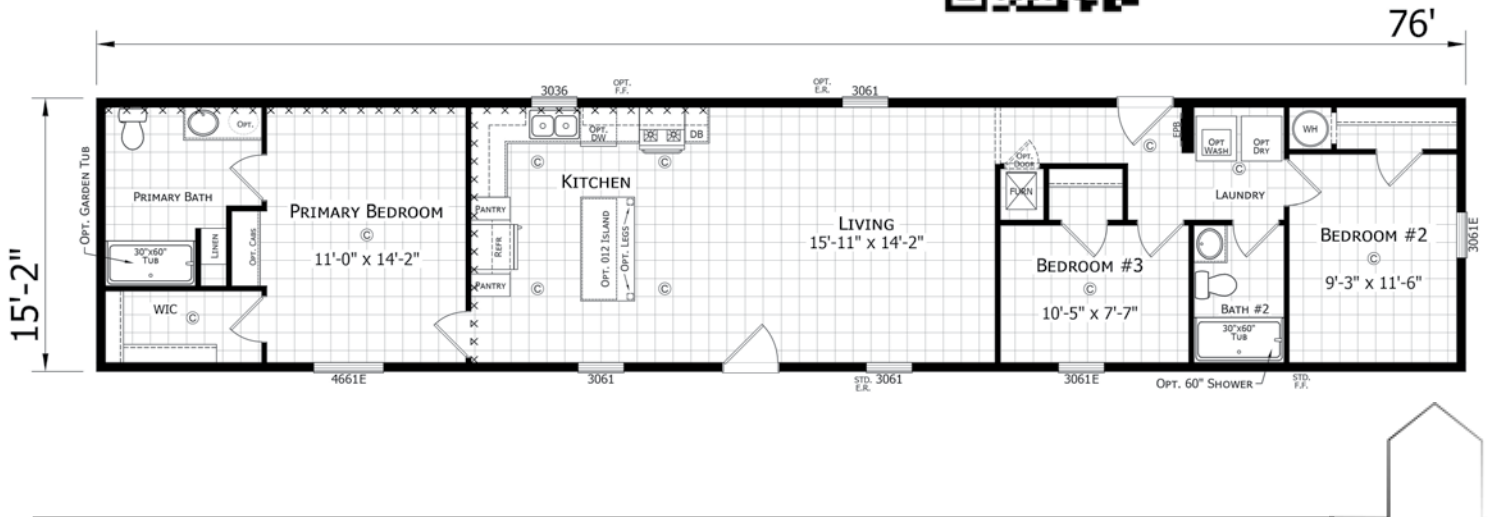
# PARAMOUNT 16' Singlewides



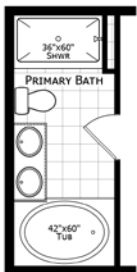
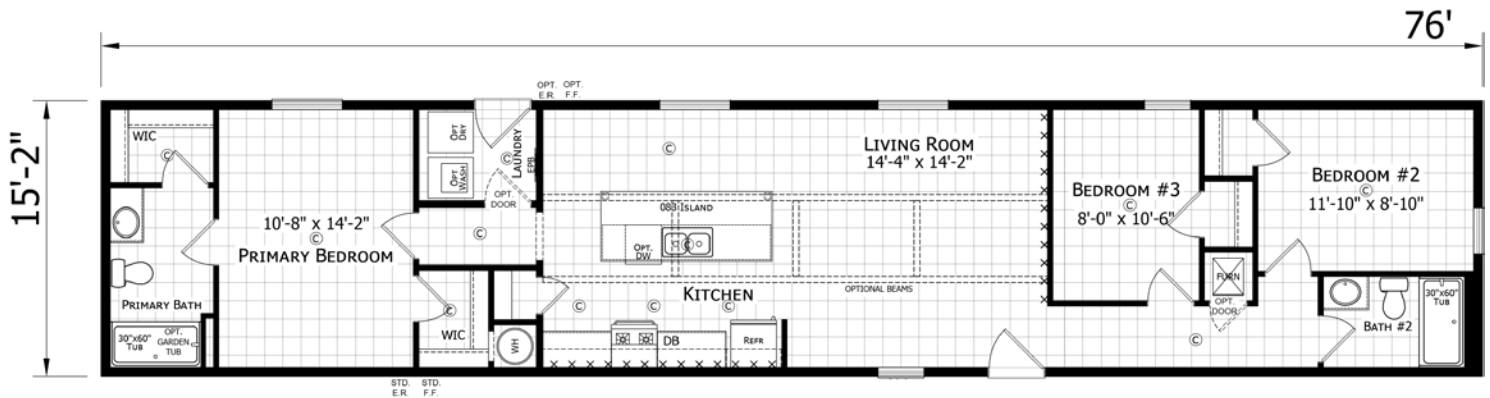
**1676H32090** ■ 3 BED • 2 BATH • 1153 SQ. FT.



Take a  
Virtual Tour!

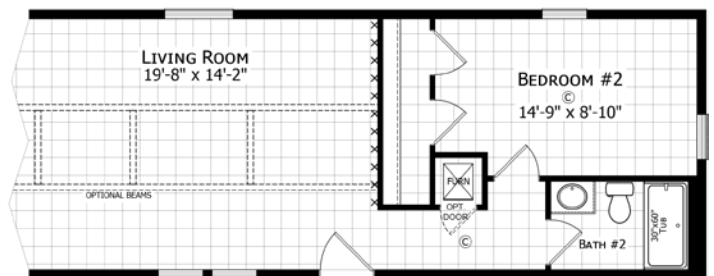


**1676H32091** ■ 3 BED • 2 BATH • 1153 SQ. FT.



Opt. Primary Bath

Take a  
Virtual Tour!



Opt. 2 Bedroom

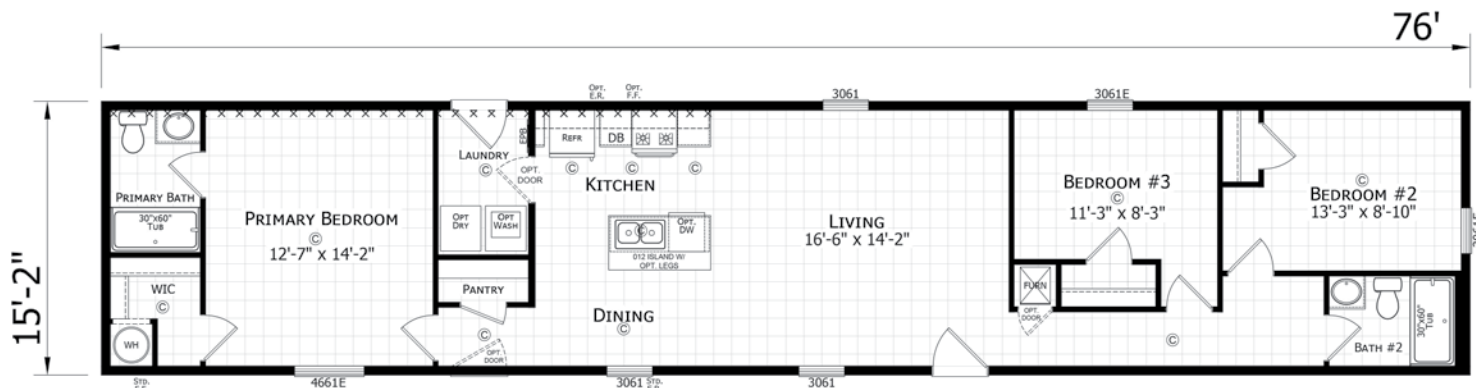


# PARAMOUNT 16' Singlewides

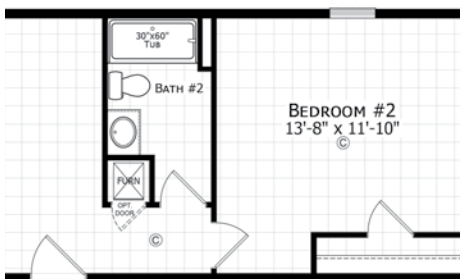
**1676H32212**



**3 BED • 2 BATH • 1153 SQ. FT.**



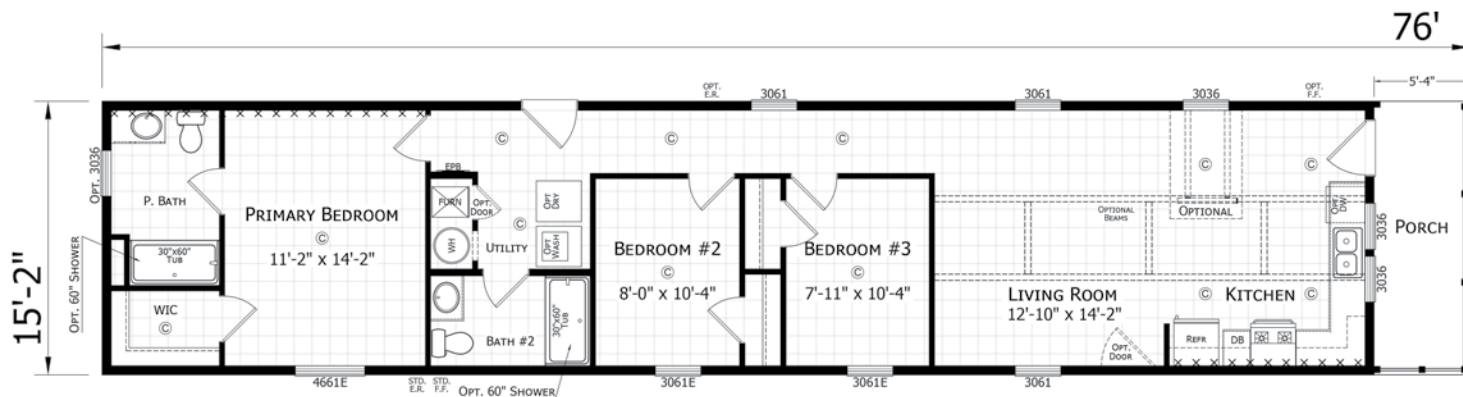
Opt.  
2 Bedroom



**1676H32221**



**3 BED • 2 BATH • 1071 SQ. FT.**



Opt.  
Primary  
Bath

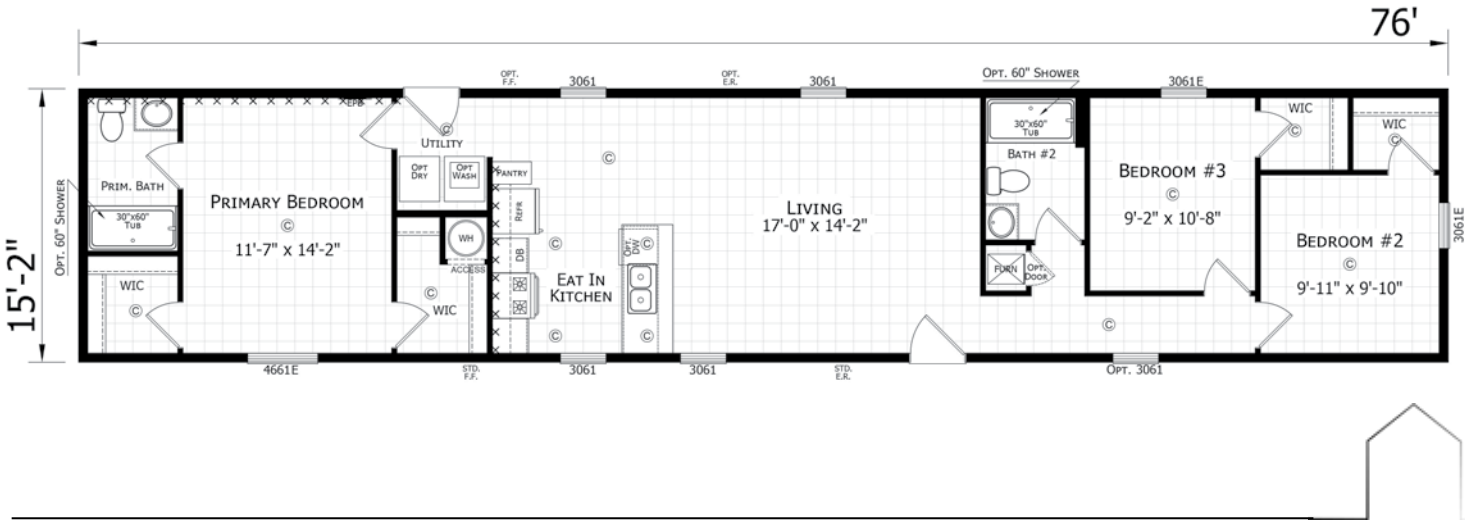


Opt. 2 Bedroom

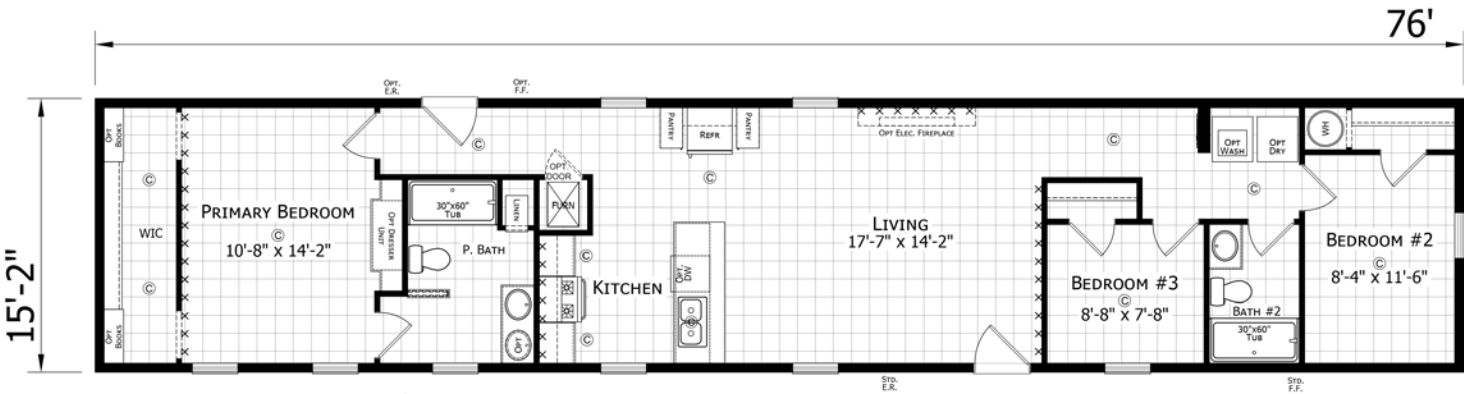
# PARAMOUNT 16' Singlewides



**1676H32222** 3 BED • 2 BATH • 1153 SQ. FT.



**1676H32259** 3 BED • 2 BATH • 1153 SQ. FT.



**NEW  
MODEL**





Shown with optional S2 end elevation and site-built porch by others.

Shown with optional S1 end elevation, 6' dormer and site-built porch by others.



Shown with optional S5 end elevation, 6' dormer and site-built porch by others.

Shown with optional S5 end elevation and site-built porch by others.



# STANDARD FEATURES Singlewides



## STRUCTURAL

- Recessed Frame
- Detachable Hitch
- 48" OC Outriggers
- 2 x 4 Exterior Sidewalls - 16" OC
- (14') 2 x 6 Floor Joist - 16" OC
- (16') 2 x 8 Floor Joist - 16" OC
- R-11 Sidewall Insulation
- R-11 Floor Insulation w/ extra row outside I beam
- 5/8" OSB Decking
- 7/16" OSB Roof Sheathing
- 30lb PSF Roof Load

## EXTERIOR

- 8' Sidewalls
- Nominal 3/12 Roof Pitch
- 25 Year Shingles
- Storm Board Sheathing
- Double 4" Vinyl Siding
- White Aluminum Fascia
- White Vented Soffit
- Black Torch Light - Exterior Doors
- Upgrade Ice & Water Shield

## WINDOWS & DOORS

- 6 Panel Residential Front Door - no storm
- 6 Panel Residential Rear Door - no storm
- Low "E" Vinyl Gridless Windows
- 30" 2-Panel White Raised Panel Interior Doors
- 2-Mortised Hinges
- Black Hinges & Interior Door Knobs
- 3 Side Door Stop

## INTERIOR FINISH

- Flat Ceilings
- Main Panel T/O  
- Factory Designer Choice
- Accent Panels - VBP  
(Choice 1 Pattern Per House)
- Linoleum T/O - Choice of Color
- Wire Shelving in Closets
- Smoke Alarms w/ Battery Backup
- Flat Wrapped Door Casing
- Flat Ceiling Cove
- Wrapped Door Jambs
- Wrapped Window Jambs
- Formica Countertops - Choice of Color
- Self Edge Countertops
- Finished Closets T/O

## KITCHEN / BATHROOMS

- Black Standard Electric Range
- Black 30" Range Hood
- Black 18 CF Over/Under Refrigerator
- 30" Lined O/H Cabs w/ Fixed Shelves
- Wrapped Shaker Cabinets
- Wrapped Cabinet Stiles
- Single Bank of Drawers - Kit - VBP
- Shelf Over Refrigerator
- Center Shelves in Base - Kitchen VBP
- Extendable Deluxe Drawer Guides
- 7" Stainless Steel Kitchen Sink
- 60" Fiberglass Tub/Shower Combo
- Round Commode
- Single Bank of Drawers - Baths - VBP
- Primary Bath Lavs 30" or Greater - VBP
- 36" High Bath Lav Base Cabinet
- China Lav Bowls
- Black Metal Faucets T/O
- Lighted Bath Fans

## HEATING / PLUMBING / ELECTRICAL

- Electric Furnace
- Aluminum Heat Ducts
- In-Line Floor Registers
- 100 AMP Service
- (1) Exterior Recept
- All Copper Wiring
- Plumb for Washer
- Wire for Electric Dryer
- PEX Water Lines
- 30 Gallon Electric Water Heater
- (1) Frost Free Exterior Faucet
- Main Water Shut Off
- Water Shut-Offs Throughout
- Can Lights Per Print
- 3 Bulb Strip Lights @ Bath Lavs
- Programmable Thermostat
- Extra Conduit Drop In Panel Box

VBP=Varies by plan



**ALL Redman Homes  
are backed by a  
7 YEAR WARRANTY**

Due to continuous product development and improvement, prices, specifications and material are subject to change without notice or obligation. Square footage and other dimensions are approximate. Included images are artist renderings and are not intended to be an accurate representation of the homes. Renderings and Floor Plans may be shown with optional features and / or third party additions that may not be available in all regions or situations. Exterior Renderings may include onsite builder built options not offered by Champion Home Builders, Inc.



# PARAMOUNT

Singlewides



308 Sheridan Drive  
Topeka, IN 46571  
[www.redmanhomesofindiana.com](http://www.redmanhomesofindiana.com)

