

Inspiration^{LE}

SINGLE WIDE HOMES

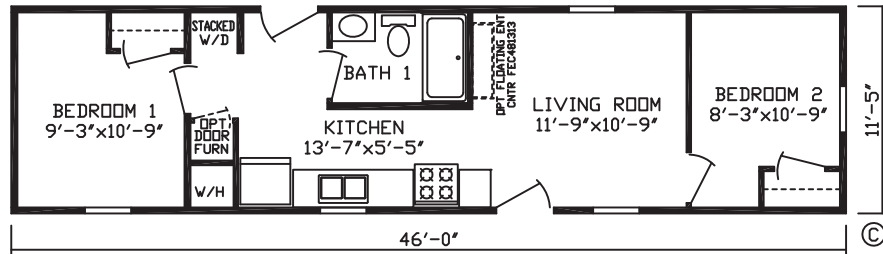
THE STANDARD IN AFFORDABLE LUXURY



CavcoNappanee.com

12 WIDES
Inspiration^{LE}

HARRIS
MODEL 24506
2 BR | 1 Bath | 525 sq ft

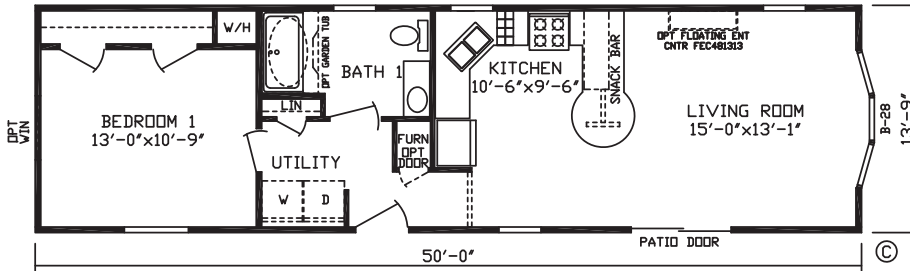


14 WIDES

HARTHMAN

MODEL 24526

1 BR | 1 Bath | 687 sq ft



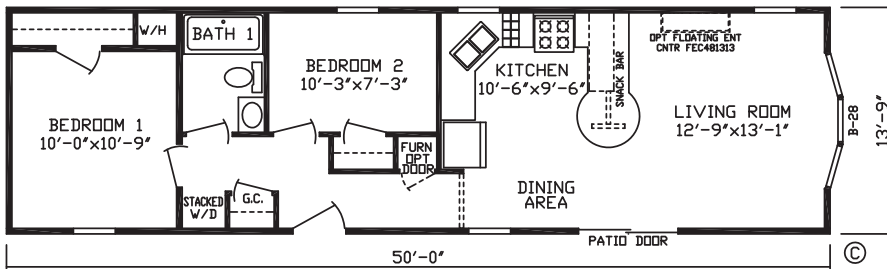
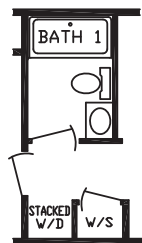
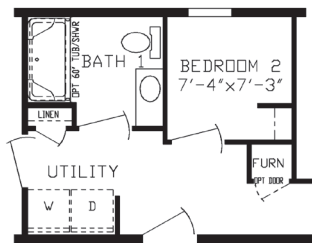
ROSEN

MODEL 24503L

2 BR | 1 Bath | 687 sq ft

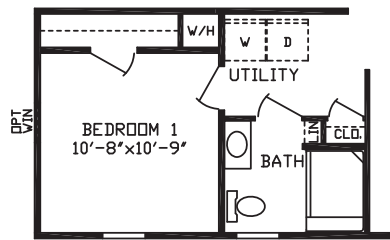
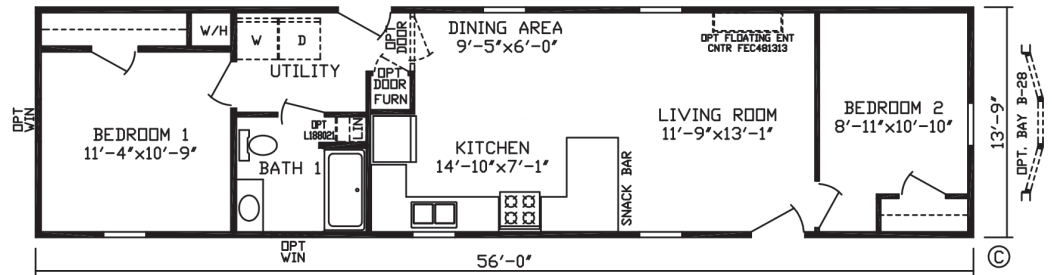
RO 1 Opt Bath 1, Utility,
Bedroom 2

RO4 Opt
Water
Softener



14 WIDES
Inspiration^{LE}

PIERRE
MODEL 24514
2 BR | 1 Bath | 770 sq ft



RO 1 Opt Bath

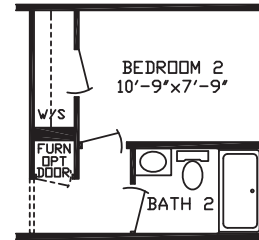
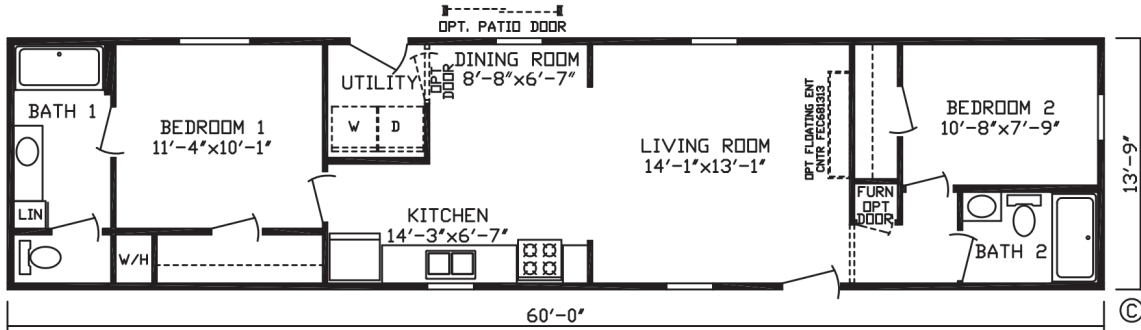


Shown with Option Dormer over Front Door and Hitch End Elevation

CLINTON

MODEL 24507

2 BR | 2 Bath | 825 sq ft



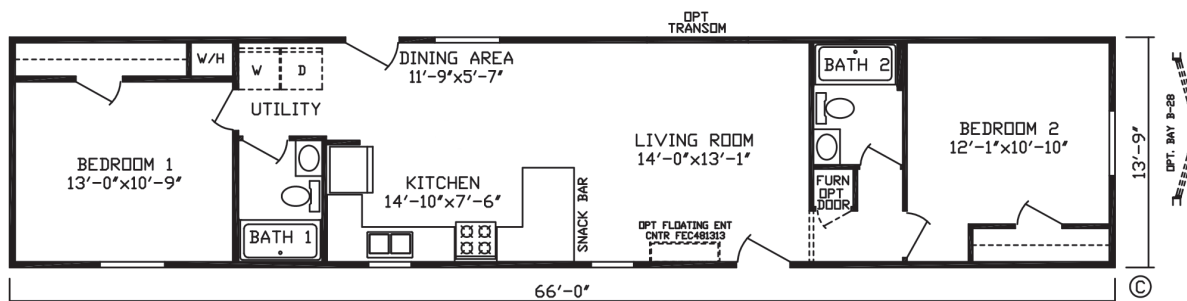
RO 1 Opt Water Softener



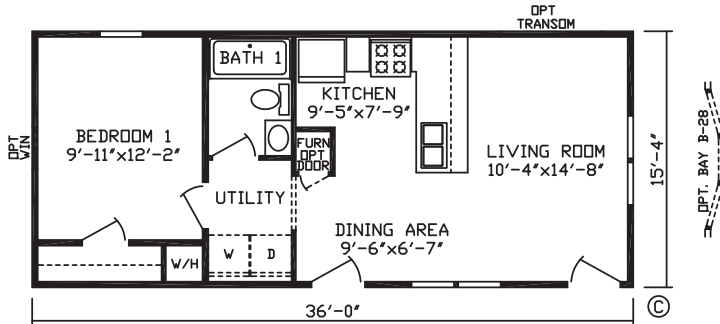
PORTER

MODEL 24515

2 BR | 2 Bath | 908 sq ft



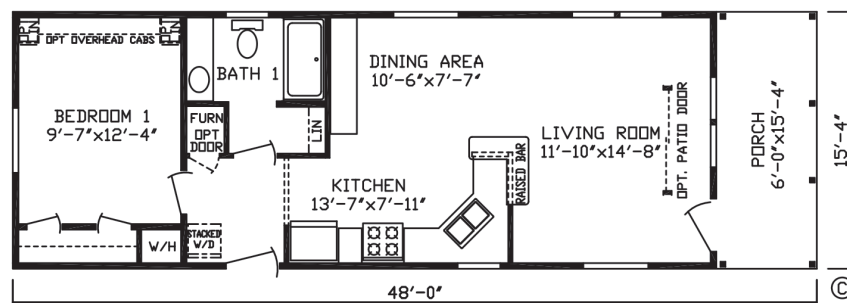
16 WIDES
Inspiration^{LE}



THE SCHUTZ
 MODEL 24527L
 1 BR | 1 Bath | 552 sq ft

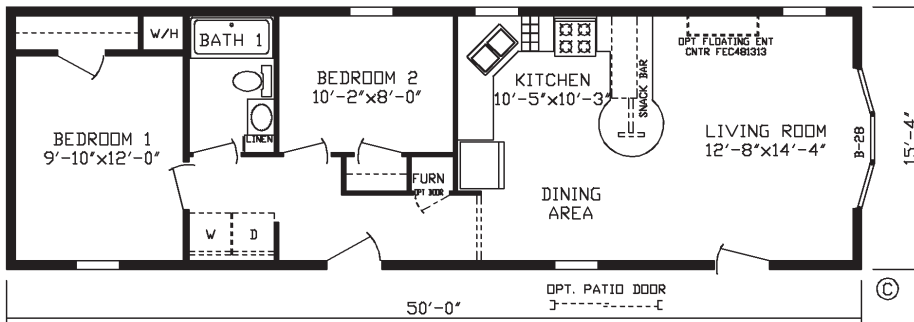


SCHUBERT
 MODEL 24528
 1 BR | 1 Bath | 644 sq ft



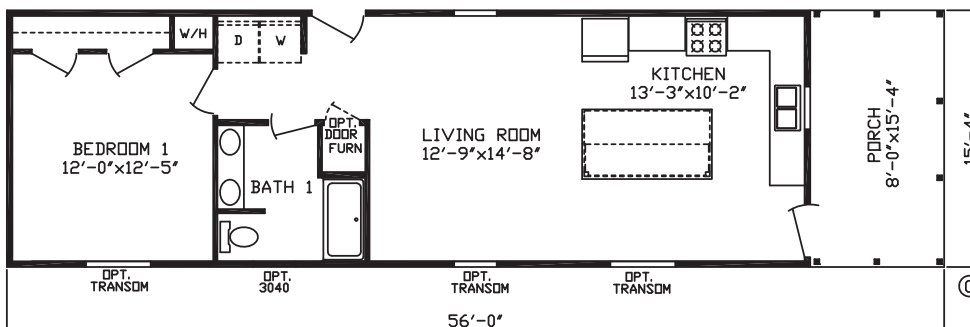
HANDEL

MODEL 24516L
2 BR | 1 Bath | 767 sq ft



MCCORMICK

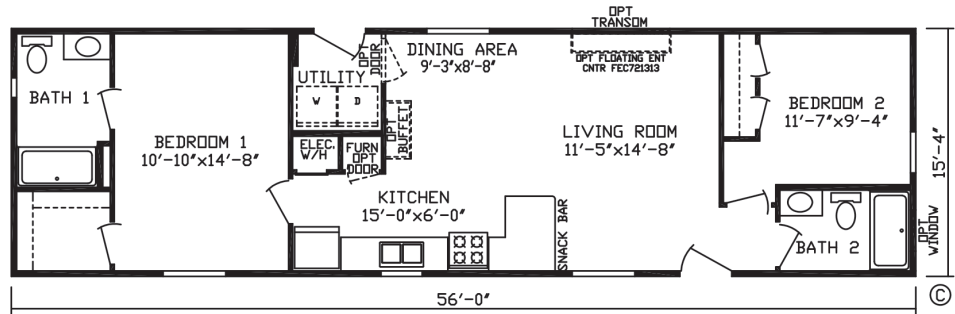
MODEL 24535
1 BR | 1 Bath | 736 sq ft



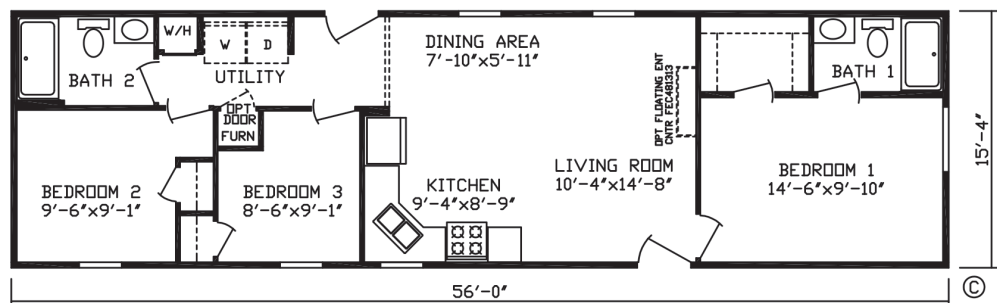
16 WIDES
Inspiration^{LE}



BELL
 MODEL 24522
 2 BR | 2 Bath | 858 sq ft



BERNSTEIN
 MODEL 24518
 3 BR | 2 Bath | 858 sq ft

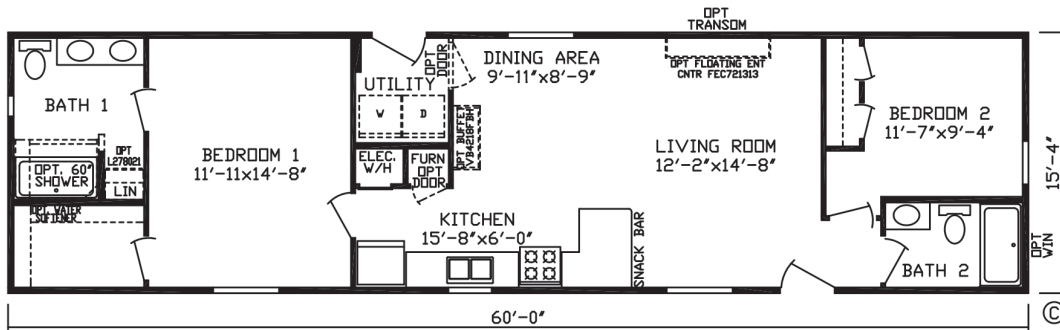
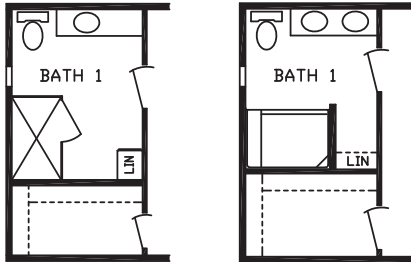


HARRISON

MODEL 24521

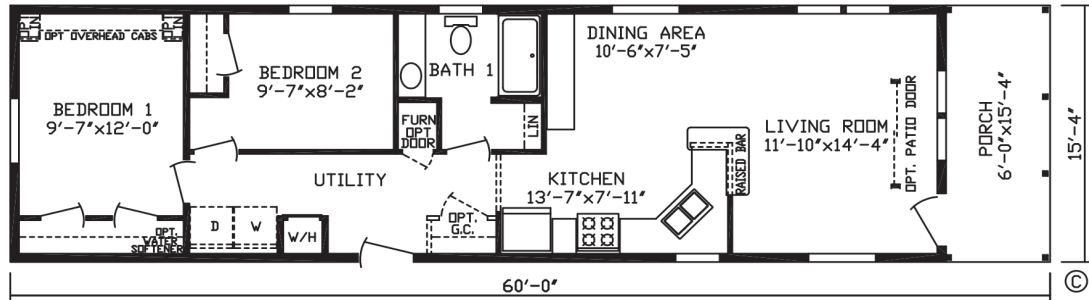
2 BR | 2 Bath | 920 sq ft

RO 1 Opt Bath 1 RO 2 Opt Bath 2



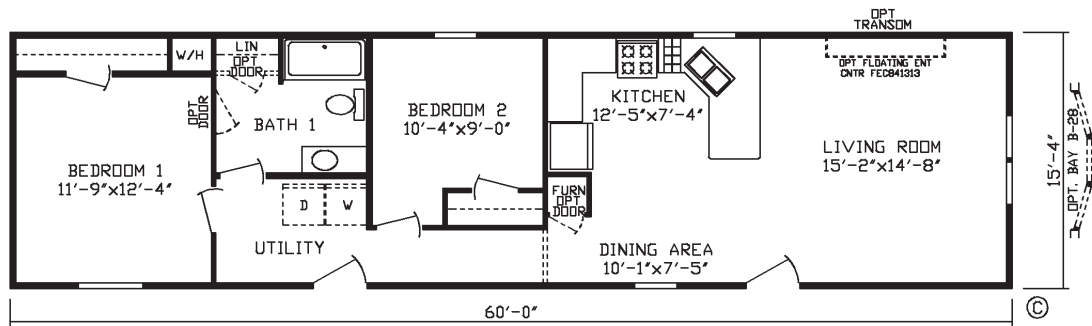
16 WIDES
Inspiration ^{LE}

CORELLI
 MODEL 24529
 2 BR | 1 Bath | 828 sq ft

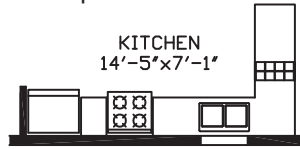


Shown with Option Dormer over Front Door

HENDRIX
 MODEL 24505L
 2 BR | 1 Bath | 920 sq ft



RO 1 Opt Kitchen

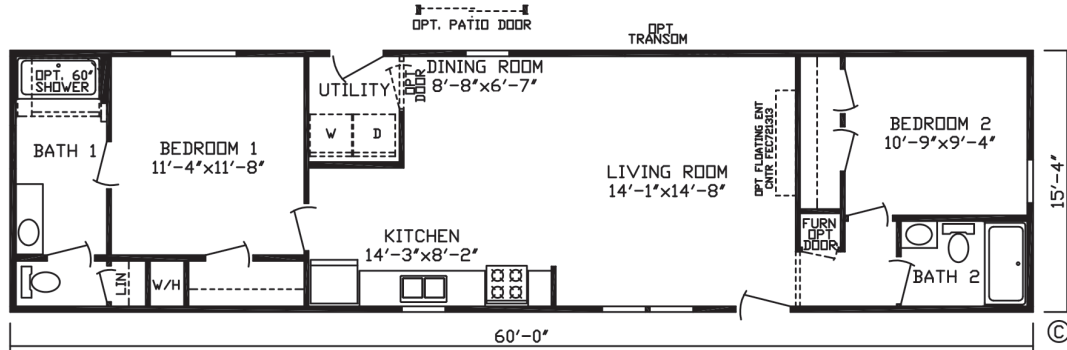
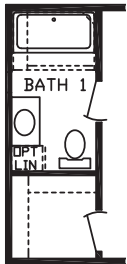


ADLER

MODEL 24501

2 BR | 2 Bath | 920 sq ft

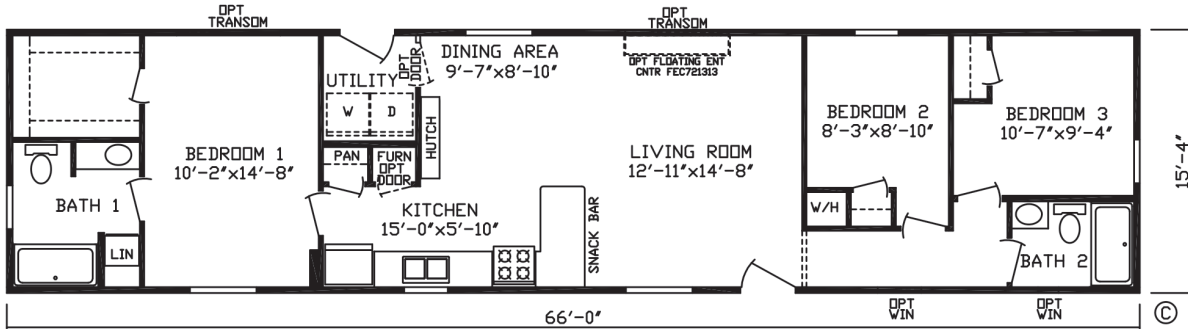
RO 3 Opt Bath



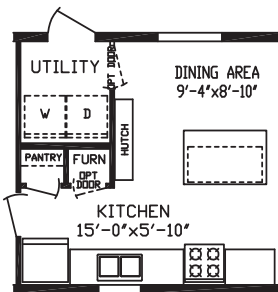
TESLA

MODEL 24523

3 BR | 2 Bath | 1,012 sq ft

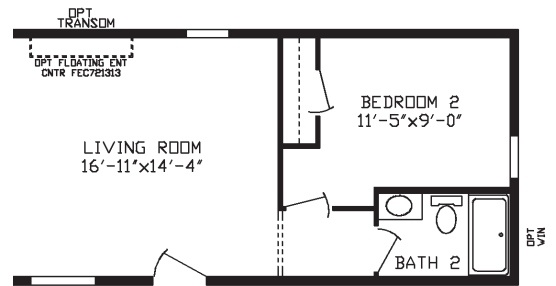
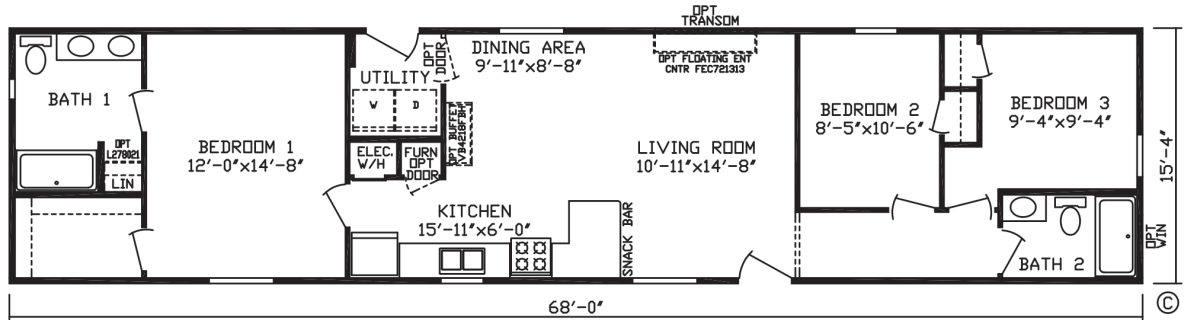


RO3 Opt Kitchen Island



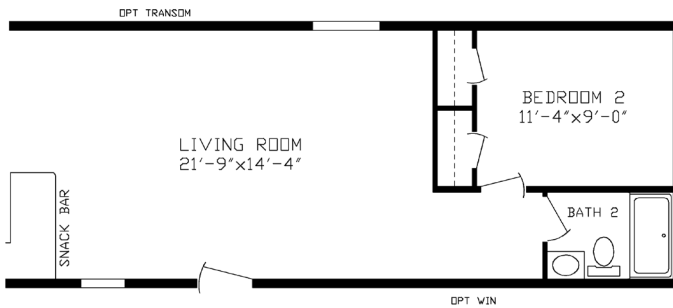
16 WIDES
Inspiration LE

CULLEN
 MODEL 24520
 3 BR | 2 Bath | 1,043 sq ft

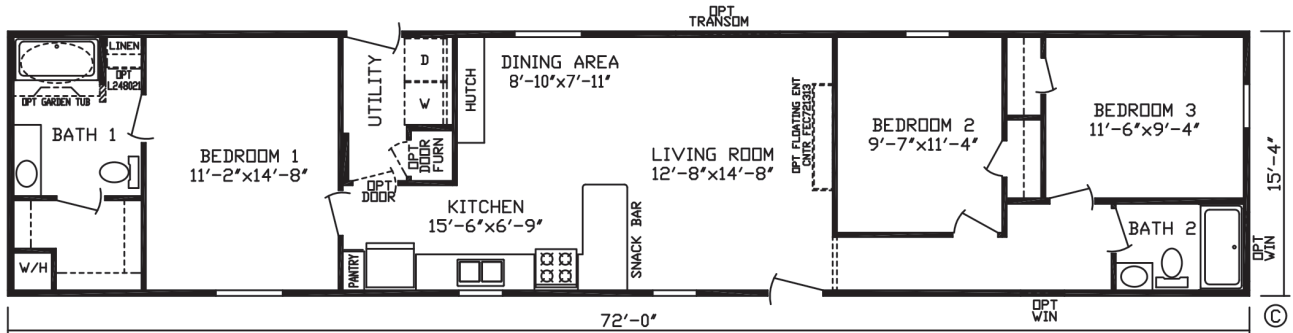


RO2 2-Bedroom Layout

RO2 2-Bedroom Layout



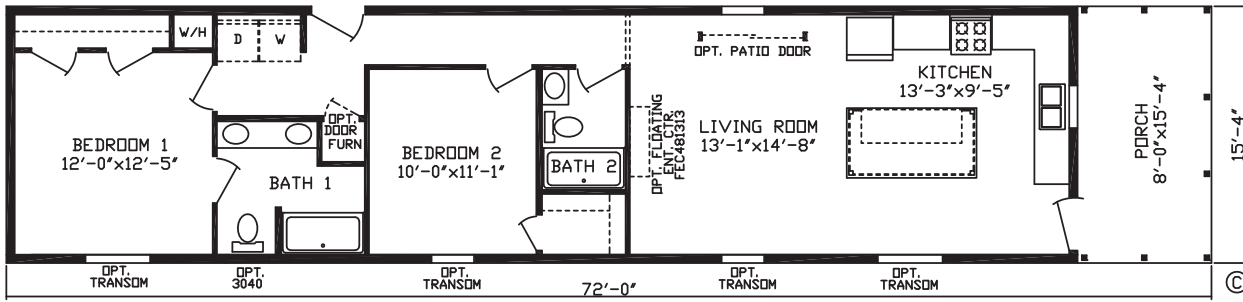
HAYDEN
 MODEL 24512
 3 BR | 2 Bath | 1,104 sq ft



CARSON

MODEL 24532

2 BR | 2 Bath | 981 sq ft

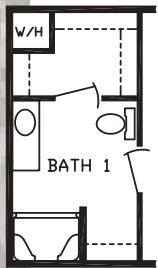
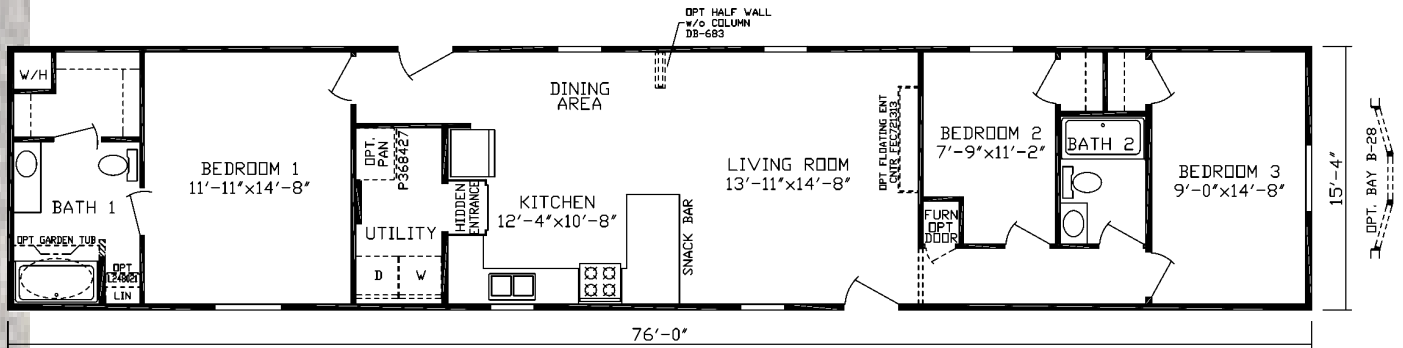


Exterior Shown with Option Single Slope Roof

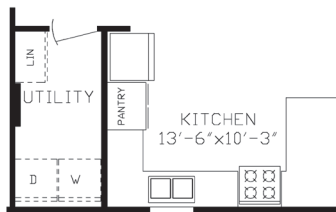


16 WIDES
Inspiration^{LE}

MOZART
 MODEL 24502
 3 BR | 2 Bath | 1,165 sq ft



RO2 Opt Bath



RO 4 Opt Kitchen



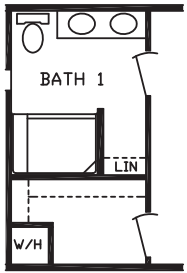
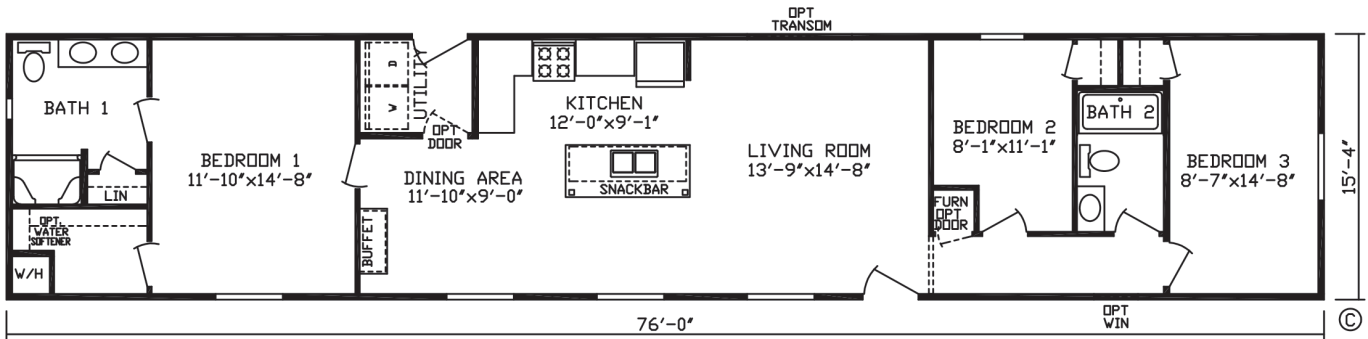
RO 5 Opt Kitchen



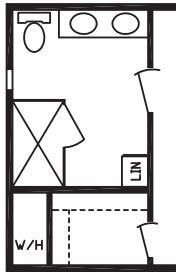
BAIRD

MODEL 24519

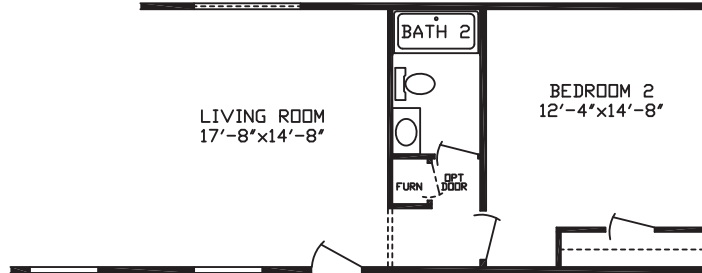
3 BR | 2 Bath | 1,165 sq ft



RO 2 Opt
Bath 1



RO 3 Opt
Bath 1



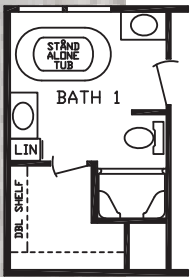
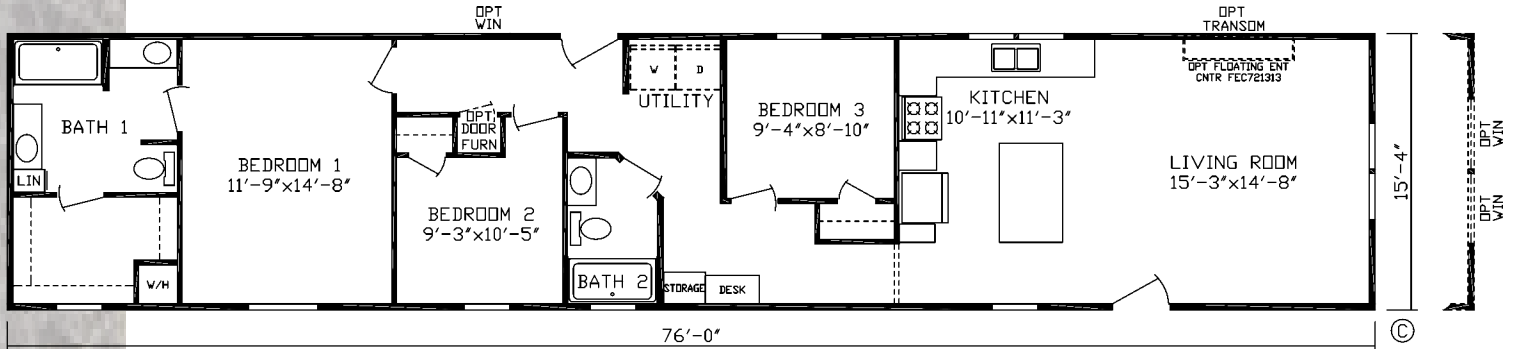
RO4 Opt 2 Bedroom



Shown with Front Door Accent Siding and Option Dormer

16 WIDES
Inspiration ^{LE}

HERTZ
 MODEL 24524
 3 BR | 2 Bath | 1,165 sq ft



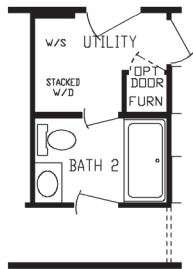
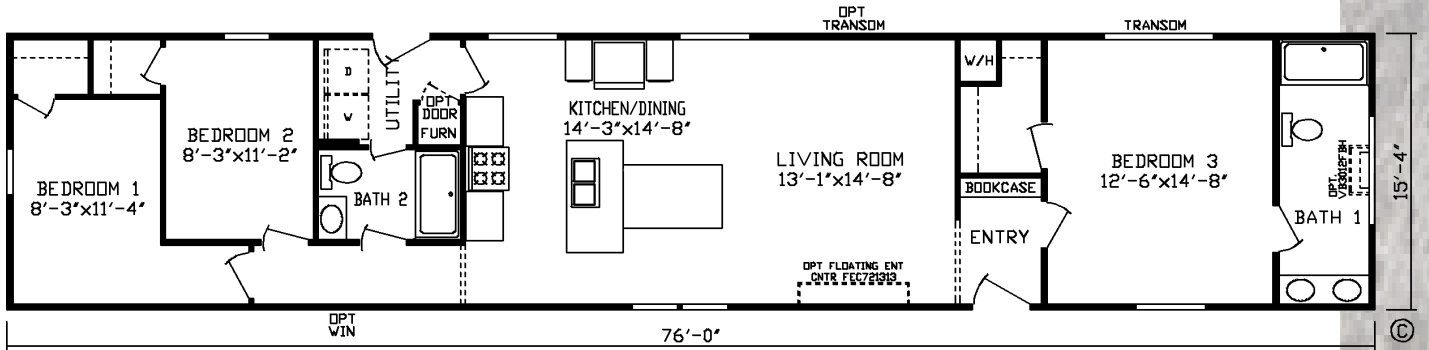
RO3 Opt Bath Tub



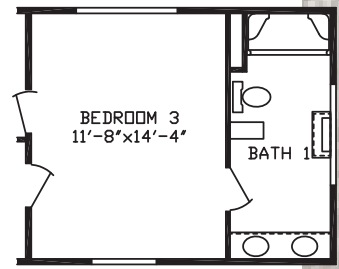
NATIONAL

MODEL 24525

3 BR | 2 Bath | 1,165 sq ft



RO2 OPT
UTILITY



RO1 OPT
BATH

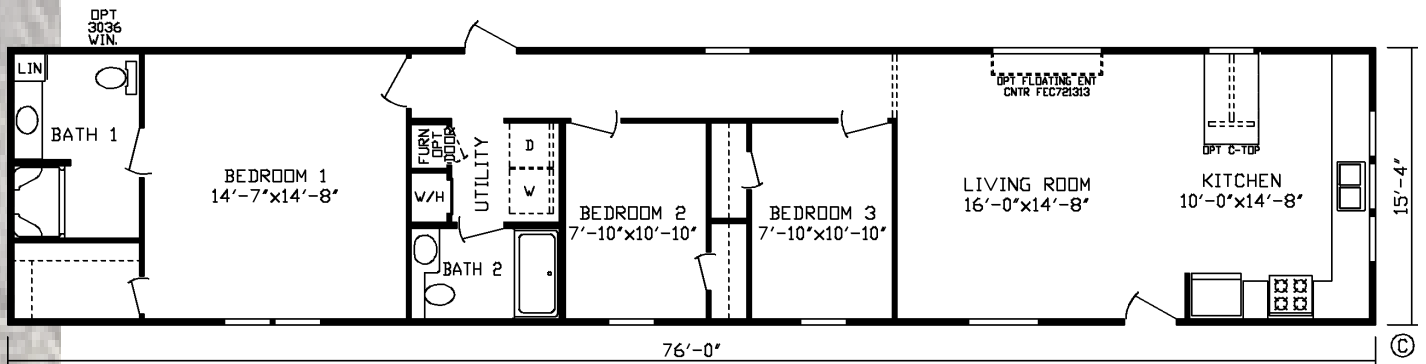


16 WIDES
Inspiration^{LE}

EASTMAN

MODEL 24530

3 BR | 2 Bath | 1,165 sq ft



Inspiration^{LE}

SINGLE WIDE HOMES Standard Features

Energy Saving Standard Features

- 7/16 OSB Exterior Sheathing
- R-29 Roof Insulation
- 2x4 Sidewalls w/R-11 Insulation
- Gas Furnace
- Positive Operating System

Exterior & Construction

- Nominal 3/12 Roof Pitch
- 8' Sidewall Height w/Flat Ceiling
- Rafters 24" O.C.
- 16" O.C. Floor Joists
- 19/32" Tongue & Groove 4x8 OSB Floor Decking
- R-11 Floor Insulation
- Tamko 25 Year Shingled Roof
- Royal Double 4" Dutch Vinyl Lap Siding
- Ice & Water Barrier
- Exterior Weather Wrap
- Shutters Doorside & Hitchend

Floor Coverings

- Shaw® Take Away Carpet
- Congoleum® Roll Goods
- Rebond Carpet Pad
- Roll Goods in Living Room, Baths, Kitchen, Dining Room, Utility & Foyer
- Tack Strip Carpet Installation in Bedrooms & Halls
- Carpet Bar Where Applicable

Electrical

- Exterior GFI Weather Resistant Receptacle on Sidewall
- GFI Bath & Kitchen Receptacles
- Smoke / CO2 Alarms
- Wire & Vent for Dryer
- Rust Coach Light at Front & Rear Door
- Recessed LED Can Lights — Dining Room, Bedrooms, 1 in Kitchen, 1 at Kitchen Sink
- 100 AMP Service

Décor

- 1/2" Decorative Vinyl on Gypsum Walls
- Textured Stippled Ceilings
- Brick Molding in Living Room, Dining Room, Kitchen & Hall w/Flat Trim in Remainder of Home
- 1-1/2" Flat-Trim Door & Window Casing
- Mini Blinds Throughout
- Fabric Valances in Living Room & Bedrooms

Plumbing

- Single Lever Metal Bath Faucet w/Shower Head
- Plumbing for Washer
- 30 Gallon Electric Water Heater
- 7" Deep Stainless Steel Kitchen Sink
- Hi Arc Kitchen Faucet
- Main Water Shut-off Below Floor
- Water Heater Access Panel (Per Print)

Baths

- 1-Piece Fiberglass Tub / Shower in Baths
- Pop-Up Drains on Bath Sinks w/Overflows
- Power Exhaust Fan
- Formica Backsplash
- Pencil-Edge Mirrors
- Porcelain Lav

Doors and Windows

- Easy Clean Tilt-Out Sash, Single-Hung Windows
- Kinro® White Low-E Vinyl Windows
- 38" x 82" Decorator 6-Panel Fiberglass Front Door
- 38" x 82" Fiberglass 1/2 Lite Rear Door
- Dead Bolt Security Lock on Front Door
- Floor Mounted Door Stops
- Triple Hinged Interior Doors
- Pre-Hung 2-Panel White Interior Doors
- Nickel Interior Door Knobs

Cabinetry

- 42" Overhead Kitchen Cabinets
- Shaker Style Wrapped Cabinetry w/Wrapped Stiles
- Hidden Hinges
- Dove Tail Drawer Construction
- Side Mounted Drawer Guides
- Formica Kitchen Backsplash
- Shelf in Washer / Dryer Area

Appliances

- S.S. 18 CF Frost Free Refrigerator
- S.S. 30" Standard Gas Range
- S.S. Euro Range Hood



2181 East Market Street
Nappanee, IN 46550

Where *exceptional*
meets **affordable.**™



Note: Cavco Nappanee reserves the right to make changes in price, colors, materials, components and specifications and to discontinue models at any time; without notice or obligation. Cavco Nappanee assumes no responsibility for any error in type or print reproduction of specifications or floor plans in this brochure. ©2026 Cavco Nappanee, ALL RIGHTS RESERVED, Rev 03/2026



CavcoNappanee.com