

Celebrating **56** Years Of Growing!

FREE
Coupons
on page
31!

Visit Our GIANT STORE! Biggest in the State!
OPEN ALL YEAR! 7 DAYS A WEEK



Cox's Plant Farm

2026 Spring Catalog

Shop at COX'S Plant Farm Lawn & Garden Center, where our greenhouses specialize in growing quality flowers and vegetable plants for our plant loving customer friends like you. For being a very important part of our business, you deserve the most courteous attention we can give. Let us take this moment to say:

"Thank you. We appreciate having you as a friend."



CELEBRATE



★ **250** ★
YEARS ANNIVERSARY
AMERICA

EST 1776

Petunias, Trixi Ball Game Mixed Combo

317-539-4632

U.S. 40 at Clayton Road (6 miles west of Plainfield)

"COX'S - The Place to Go for Things that Grow" (Spread the Word!)

April 1st to September 30th : 9 am – 6 pm

October 1st to March 31st : 9 am – 5 pm



COX'S - THE PLACE TO GO FOR THINGS THAT GROW!

Cox's Plant Farm Offers You...

- GARDEN PLANTS
- ANNUAL FLOWERS
- PACKAGED SEED
- BULK GARDEN SEED
- PERENNIAL FLOWERS AND BULBS
- NURSERY STOCK
- SHADE TREES
- ORNAMENTAL TREES
- FRUIT TREES
- SEVERAL BERRIES
- ROSES
- SHRUBS
- VINES
- CEMENT PRODUCTS FOR THE LAWN
- GRASS SEED
- SPRAYS
- FERTILIZER
- PEAT MOSS
- MISC. LAWN AND GARDEN SUPPLIES
- POTTERY
- MOWERS AND TILLERS

We can give you much better quality of plants and flowers, at very reasonable prices.

Shop in our greenhouses where we grow over 300 varieties of flowers and vegetable plants.

Call Us Toll Free 1-800-877-0632

WE HAVE GIFT CERTIFICATES.
Give a perfect gift to someone special!

Cox's Plant Farm

CATALOG INDEX

Page 2 Catalog Index and information
 Page 3 Remembering Our Loved Ones / Flags & Doormats
 Page 4 Chimes & More
 Page 5 Garden Accents, Herbs and Ground Covers
 Pages 6-8 Perennials
 Page 9 Water Plants
 Page 10 Wayne's Solutions
 Page 11 Bedding Plants
 Pages 12-15 Annual Flowers in Packs
 Pages 16 Asparagus, etc.
 Pages 17-18 Vegetables in Packs
 Pages 19-22 Garden Seed
 Page 23 Contest Winners, Perennial Bulbs
 Page 24 Simplicity Power Equipment
 Page 25 Echo Portable Power, Country Clipper Mowers
 Page 26 Fruit Trees
 Page 27 Grapes, Berries, Nursery Stock
 Page 28 Bulk Grass Seed and Fall Garden Plants
 Page 29 Planting and Fishing Calendar
 Page 30 SUPERthrive
 Page 31 Miscellaneous and Coupons
 Back Cover Location Map

Cox's Team



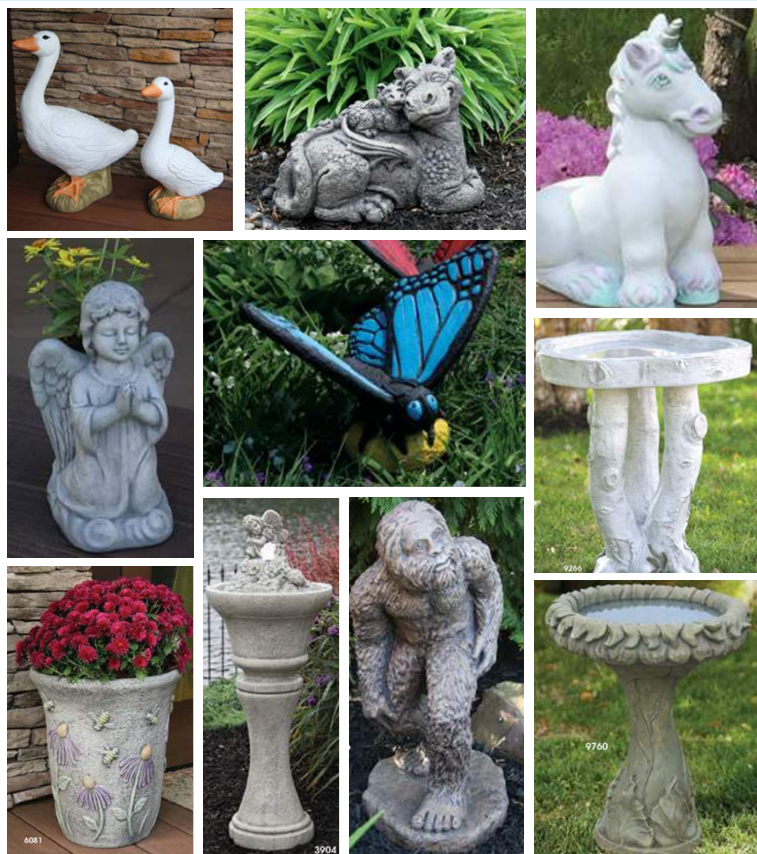
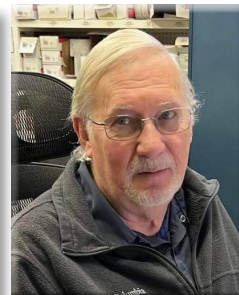
Diane



Danny



Gary



CUSTOMER SERVICE

At most stores "Customer Service" is a hard-to-find office some place in a very inconvenient location and the person you need to see seems to be always "out of the office today."

At Cox's customer service is where the customer NEEDS service. It is at the counter where you may purchase seeds by the scoop; it is in the greenhouse where you receive information about annual flowers (need to be planted each year), perennial flowers (come up each year), vegetables, herbs, or houseplants and even get answers to questions about plants you already own. If we cannot provide what you need or cannot answer your questions, we don't mind spending time trying to find information for you.

In the shrub area you will find people who are glad to help you select shrubs and trees suitable for your home. Whether you need low-growing evergreens, flowering shrubs or trees, fruit trees, berries, grapes or shade trees you will find our employees eager to help you make the best selection.

Inside the main store, along with lawn mowers, lawn mower parts, bird baths, lawn ornaments, pottery, gardening tools, hoses, seed, peat moss, fertilizer, insecticides, herbicides, landscapes stone, etc., you will find friendly staff who believe that helping you is the most important job to be done.

At Cox's Plant Farm everyone is in the business of Customer Service and we are "in" 362 days each year. Here there's always someone available who will gladly help you.

Celebrating our 56th Growing Season!

CHIMES & MORE



NEW GARDEN ACCESSORIES



REMEMBERING OUR LOVED ONES...



DECORATIVE FLAGS & DOORMATS



**PLANT
HAPPINESS
PLANT
NOW**
FOR SUMMER COLOR



It's For The Birds

BIRD FEEDERS

(Thistle and Regular Type)
HUMMINGBIRD
FEEDERS and NECTAR

BIRD HOUSES

All Kinds and Sizes
THISTLE SEED, MIXED BIRD
SEED and SUNFLOWER SEED



Herbs for the Perennial Garden

Include perennial herbs in your garden for their strong form, attractive foliage color, delightful fragrance or culinary uses.

Herbs are the ultimate hands-on plants.



PREMIUM HERBS

Each: \$2.49 • Flat of 18: \$34.98

BASIL BOXWOOD
DILL BOUQUET
FRENCH TARRAGON
LAVENDER
PARSLEY FLAT

ROSEMARY
SAGE
SWEET BASIL
THYME

Large 4 PACK: \$3.98 ea. • Full Flat for \$28.98

BASIL CINNAMON
BASIL LEMON
LEMON BALM
BASIL SIAM QUEEN
BASIL SPICY GLOBE
BASIL SWEET
CATNIP
CHIVES REGULAR

CHIVES GARLIC
CILANTRO (CORIANDER)
DILL BOUQUET
FENNEL
MARJORAM SWEET
OREGANO
PARSLEY CURLED
PARSLEY FLAT

PENNYROYAL
PEPPERMINT
RUE
SAGE
SANTOLINA
(WINTER SAVORY)
SPEARMINT
THYME



Pachysandra

1801 Pack

Groundcovers

Traditional groundcovers include Ivy, Pachysandra, Vinca (myrtle) and Ajuga among others. Our selection will include most of those as well as others that you may not have considered for groundcover.



Myrtle

804 Pack

Full Flat

GROUNDCOVER PRICES

Ajuga Bronze	\$4.49	\$3.98 ea.
Ajuga Burgundy	\$4.49	\$3.98 ea.
Ivy, Baltic	\$4.49	\$3.98 ea.
Ivy, English	\$4.49	\$3.98 ea.
Pachysandra	\$4.49	\$3.98 ea.

Sedum Acre Golden Carpet	\$4.98	\$35.49
Sedum Dragon Blood	\$4.98	\$35.49

Check Out Our PERENNIALS

We Have the Largest Selection in the State

Some varieties are in limited supply and may sell out quickly.

Many of the perennials listed will be available in a variety of container sizes up to 2 gallons.

LARGER PERENNIALS

PLANTS IN QUART POTS STARTING AT \$6.98 AND UP

PERENNIALS

Many of these plants are economically priced at 1 plant for \$4.49 ea.
18 or more \$3.98 ea.!

Use SUPERthrive and Multicoat when planting for the fastest start.

ACHILLEA MILLEFOLIUM, Yarrow

Desert Eye Yellow
Firefly, Diamond
Firefly, Fuchsia
Vintage Violet



ACONIUM

Cammarum Bicolor
Stainless Steel

ACTINIDIA, Hardy Kiwi

AEGOPODIUM, Bishop's Weed

Snow On The Mountain

AGASTACHE, Hyssop

Beelicious Pink
Guava Lava
Pinky Pie
Royal Raspberry

AJUGA, Bugleweed

Burgundy Glow
Chocolate Chip

AKEBIA, Chocolate Vine

Burgundy Glow **NEW**
Catlin's Giant **NEW**
Chocolate Vine

ALCEA, Hollyhock

Chater's Double Mix
Chater's Double Pink
Chater's Double Purple
Chater's Double Scarlet
Chater's Golden Yellow
Peaches 'n Dreams
Spotlight Purple Rain

ALLIUM

Bobblehead
Lavender Bubbles
Millenium
Serendipity

ALYSSUM

Golden Spring

AMSONIA, Blue Star Flower

Storm Cloud

ANEMONE

Dawn Breaker **NEW**

AQUILEGIA, Columbine

Earlybird, Purple & Blue
Earlybird, Purple & Yellow
Earlybird, Red & White
McKana Giants **NEW**

ARALIA

Sun King

ARMERIA DREAMERIA

Vivid Dreams

ARTEMISIA, Wormwood

Powis Castle
Schmidtiana Silver Mound
ARUNCUS DIOICUS Goat's Beard
Kneiffii **NEW**

ASCLEPIAS, Milkweed

Buttery Flowers
Cinderella
Hello Yellow
Ice Ballet
Tuberosa

ASTER

Kickin', Carmine Red
Kickin', Lilac Blue
Kickin', Pink Chiffon
Kickin', Purple
Pink Crush
Purple Dome

ASTILBE, False Spirea

Bridal Veil
Dark Side of the Moon
Deutschland
Fanal
Maggie Daley
PLUS MORE VARIETIES

BAPTISIA, False Indigo

Australis
Burgundy Blast
Decadence, Cherries Jubilee
Decadence, Pink Lemonade
Decadence, Sparkling Sapphires
Golden Anniversary
Grape Escape
Musical Duet **NEW**

BELAMCANDA

Freckle Face

BERGENIA, Pig Squeak

Miss Piggy

BRUNNERA, Heartleaf Alkanet

Alexandria
Jack Frost
Looking Glass
Macrophylla, Silver Heart
Macrophylla, Variegata
Queen of Hearts

BUDDLEIA, Butterfly Bush

Black Knight
Butterfly Candy Li'l Raspberry **NEW**
Butterfly Candy Li'l Taffy **NEW**
Buzz, Hot Raspberry
Buzz, Midnight
Chrysalis, Blue
Chrysalis, Cranberry

Chrysalis, Pink

Chrysalis, Purple
Grand Cascade
Lilac Cascade
Monarch Princess Pink **NEW**
Pink Cascade
Prince Charming
Princess Pink
Queen of Hearts
Violet Cascade
XW, Bicolor
XW, Golden Glow

CAMPANULA, Bell Flower

Angel Bells
Bells and Whistles
Blue Bells **NEW**
Clips Deep Blue
Pearl White
Rapido, Blue
Rapido, White

CHELONE, Turtle's head

Rosea
Tiny Tortuga

CIMICIFUGA - ACTAEA

Chocoholic

CLEMATIS

Adam's Courage
Avant-Garde
Bourbon **NEW**
Candy Stripe
Cardinal Wyszynski
Diamantina **NEW**
Diana's Delight **NEW**
Dr. Ruppel
Duchess of Cornwall
Edda Prem **NEW**
Fleuri
H.F. Young
Hagley
Henry **NEW**
Huldine
Jackmanii
Jackmanii Super
Josephine **NEW**
Kilian Donahue **NEW**
Lindsay
Miss Bateman
Mrs. Robert Brydon
Mrs. N. Thompson
Nelly Moser
Niobe
Paniculata
Perrin's Pride **NEW**
Pink Champagne
Poseidon
Rebecca **NEW**
Sapphire Indigo **NEW**
Silver Moon
Stand By Me
Stand By Me Lavender



Sunset

Sweet Autumn
Texensis Princess Diana
The President

COREOPSIS, Tickseed

Candy Stripes
Crazy Cayenne
Golden Needles
Heartstring
Hot Paprika
Lipstick Red **NEW**
Moonbeam
Red Elf
Solar Moon
Solanna Glow **NEW**
Sun Kiss **NEW**
Sunset Bright
Uptick Red
Zesty Zinger

CROCOSMIA

George Davison **NEW**
Lucifer **NEW**
Peach Melba **NEW**

DELOSPERMA, Ice Plant

Action Shot **NEW**
Dancing Embers
Delmara, Pink
Delmara, Yellow **NEW**
Desert Dancers Purple **NEW**
Ocean Sunset Orange Glow

DELPHINIUM, Larkspur

Aurora Deep Purple
Magic Fountain, Dark Blue/Dark Bee
Magic Fountain, Dark Blue/White Bee
Magic Fountain, Lilac Pink/White Bee
Magic Fountain, Sky Blue/White Bee **NEW**
Magic Fountain, Mix **NEW**
Magic Fountain, White/Dark Bee
Pacific Giants Mix **NEW**

DIANTHUS, Border Carnation

Mountain Frost Ruby Snow **NEW**
Paint the Town Red
Red Rouge

DICENTRA, Bleeding Heart

Bacchanal 2-3 Eye
Eximia
Luxuriant
Passion Hearts **NEW**
Spectabilis
Spectabilis, Alba 2-3 Eye
Spectabilis, Pink 3-5 Eye
Spectabilis, Valentine 2-3 Eye
Spectabilis, Gold Heart
White Diamonds
Yellow Leaf



Largest Selection of Perennials in the State

Use SUPERthrive and Multicoat when planting for the fastest start.

DIGITALIS, Foxglove

Candy Mountain Rose
Dalmatian, Rose
Dalmatian, Purple
Dalmatian, Peach
Pink Panther **NEW**
Purpurea Foxglove

ECHINACEA, Coneflower

Canary Feather
Cheyenne Spirit
Coral Cranberry **NEW**
Everything's Rosy
Fiesta Orange
Frankly Scarlet
Jamberry **NEW**
Kismet Yellow
Lemon Yellow
One in a Melon
Pollynation Yellow
Prairie Blaze Vintage Lime
Prima Saffron
Raspberry Deluxe
Salsa Red
Sangrita
Sombrero, Adobe Orange **NEW**
Sombrero, Lemon Yellow Imp
Sombrero, Sangrita
Strawberry Deluxe
Summersong Firefinch
Sun Seekers Golden Sun **NEW**
The Price is White
Yellow My Darling

ECHINOPS RITRO

Vetch's Blue

EUPATORIUM PURPUREUM

Baby Joe
Monarch Madness White **NEW**

EUPHORBIA, Spurge

FERN

Athyrium Crested Surf
Cyrtomium Japanese Holly
Dryopteris, Autumn
Dryopteris, Shaggy Shield
Polystichum, Christmas
Polystichum, Tassel Fern

GAILLARDIA, Blanket Flower

Arizona Sun

GALIUM, Sweet Woodruff

GERANIUM, Cranesbill

Boom Chocolatta
Daily Blue
Frisolous, Flashing Pink **NEW**
Frisolous, Purple
Max Frei
Rozanne
Thumping Heart



GRASSES

Amazon Mist
Andropogon Blackhawks
Calamagrostis, Eldorado **NEW**
Calamagrostis, Lightning Strike **NEW**
Carex Firefox **NEW**
Carex Morrowii Ice Dance
Cortaderia Selloana Rosea Pamper Pink
Cortaderia Selloana Rosea Pamper White
Cymbopogon, Lemon Grass
Erianthus, Ravennae (Pampas) **NEW**
Festuca, Blue Glauca Fescue
Festuca, Elijah Blue **NEW**
Hakonechloa Aureola **NEW**
Imperata Red Baron
Isoplepis Cernua **NEW**
Juncus Spiralis Corkscrew Rush
Leymus A Blue Dune **NEW**
Miscanthus, Adagio
Miscanthus, Cabaret **NEW**
Miscanthus, Cosmopolitan **NEW**

Miscanthus, Fire Dragon **NEW**
Miscanthus, Gold Bar **NEW**
Miscanthus, Gracillimus
Miscanthus, Strictus
Miscanthus, Little Miss **NEW**
Miscanthus, Little Zebra
Miscanthus, Malepartus **NEW**
Miscanthus, Purpurascens **NEW**
Miscanthus, Rigoletto **NEW**
Panicum, Hot Rod **NEW**
Panicum, Northwinds
Panicum, Red Flame
Panicum, Shenandoah
Pennisetum, Burgundy Bunny **NEW**
Pennisetum, Fireworks
Pennisetum, First Knight **NEW**
Pennisetum, Lemon Squeeze
Pennisetum, Little Bunny
Pennisetum, Prince **NEW**
Pennisetum, Princess Caroline **NEW**
Pennisetum, Purple Fountain
Pennisetum, Red Rubrum
Phalaris, Strawberries & Cream **NEW**
Scirpus Pendulus, Stars & Stripes **NEW**
Schizachyrium, Cinnamon Sticks **NEW**
Schizachyrium, Shining Star **NEW**

GYPSOPHILA

Festival Star
Filou, Rose
Filou, White

HELENIUM, Sneezeweed

HELIOPSIS, Ox-Eye

Athena Gold **NEW**
Bit of Honey
Orange Marble **NEW**
Rays For Days **NEW**
Summer Eclipse
Tuscan Sun

HELLEBORUS

Dark & Handsome
French Kiss **NEW**
Honeymoon French Kiss
Picotee
Summer Sun **NEW**
Wedding Party First Dance
Wedding Party True Love

HEMEROCALLIS, Day Lily

Band of Fire
Bela Lugosi
Blushing Bluebell **NEW**
Bogeyman
Born to Run
Calico Jack
Chicago Apache
Daria
Double Pardon Me
Entrapment
Fearfully & Wonderfully Made
Fragrant Returns
Garden Show
Gothic Grenadine **NEW**
Hanalei Bay
Heavenly Pink Fang
Irresistible Charm
Lies & Lipstick
Marque Moon
Orange Smoothie
Pardon Me Red
Persian Ruby
Pink Stripes
Primal Scream
Rock Solid
Rocket City
Royal Invitation **NEW**
Ruby Spider
Simmons Overture
Spacecoast Early Bird **NEW**
Storm of the Century
Storm Shelter
Water Dragon

HERBS

Basil, Lemon Mrs. Burns
Basil, Sweet Italian Large Leaf
Chamomile German
Chives, Schoenoprasum
Chives, Schoenoprasum Garlic
Cilantro, Santo
Dill, Compacto
Fennel, Bulgare Florence
Hyssop **NEW**
Lavandula, Angustifolia Hidcote
Lavandula, Angustifolia Munstead
Leeks
Lemon Grass
Marjoram, Sweet Origanum
Mint, Apple **NEW**
Mint, Chocolate
Mint, Orange
Mint, Peppermint
Mint, Pineapple Variegated
Mint, Spearmint
Nepeta, Catwalk Queen **NEW**
Nepeta, Faassenii Cat's Pajamas **NEW**
Nepeta, Mussinii Catmint
Oregano, Greek
Parsley, Italian
Perovskia Russian Sage, Denim N Lace
Perovskia Russian Sage, Prime Time
Perovskia Russian Sage, Blue Steel
Rosemary, Officinalis
Sage, Officinalis Garden
Stevia, Rebaudiana Sugar Bush
Tarragon Russian
Thymus Praecox Coccineus
Thymus, Serpyllum Mother of Thymus
Winter Savory

HEUCHERA, Coral Bells

Black Pearl
Black Taffeta
Cherry Cola
Cherry Truffles
Evening Gown
Glazed and Infused **NEW**
Gold Zebra
Grape Expectations
Indian Summer, Coralberry **NEW**
Indian Summer, Silverberry **NEW**
Lava Lamp
Pink Panther
Prom Dress
Smoke & Mirrors
Sweet Tea
Timeless Night
Wildberry

HEUCHERELLA, Foamy Bell

Capture the Flag **NEW**
Catching Fire **NEW**
Copper Cascade **NEW**
Golden Zebra **NEW**
Onyx **NEW**
Pink Revolution **NEW**
Plum Cascade **NEW**
Sweet Tea **NEW**

HIBISCUS, Rose Mallow / Hardy

All Eyes On Me
Berry Awesome
Blackberry Merlot
Chance Encounter **NEW**
Cookies and Cream
Edge of Night
Evening Rose
Garnet Globes **NEW**
Holy Grail
Marshmallow Moon
Midnight Marvel
Starry Starry Night
Summer Carnival **NEW**
Watermelon Ruffles

HOSTA, Plantain Lily

American Halo
Autumn Frost

Ben Vernooij
Blazing Saddles
Blue Angel
Blue Mouse Ears
Brim Cup
Bulletproof
Buttercups
Cameo Mini
Captain Kirk
Cathedral Windows
Chance Encounter **NEW**
Christmas Tree **NEW**
Dancing in the Moonlight
Dancing Queen
Dancing With Dragons
Diamond Lake
Diana Remembered
Dream Queen
Emperors New Clothes
Empress
Firn Line
Francee
Frances Williams
Gigantosaurus
Guacamole
Halcyon
Love Story
Maui Buttercups
Mighty Mouse Mini
Mini Skirt Mini
Munchkin Fire Mini
Orange Star
Pandoras Box Mini
Pizzazz
Praying Hands
Robert Frost
Sage
School Mouse
Seducer
So Sweet
Sound of Music
Stained Glass
Time in a Bottle
Voice in the Wind
Waterslide **NEW**
White Feather
Wide Brim
Wolverine
Wu-La-La



HOULTUYNIA, Chameleon Plant

Cordata Chameleon

IBERIS SEMPERVIRENS

Assorted **NEW**
Black **NEW**
Chick Mix **NEW**

INCARVILLEA, Gloxinia

Delavayi

IRIS

Ensata, Nessa
Ensata, Dinner Plate Blueberry Pie **NEW**
Ensata, Dinner Plate Ice Cream
Ensata, Gold Bound
Ensata, No Mai **NEW**
Ensata, Sensation
Germanica, Apricot Silk
Germanica, Autumn Encore
Germanica, Breakers
Germanica, Dawn of Fall
Germanica, Earl of Essex
Germanica, Immortality
Germanica, Joanna
Germanica, Latest Style
Germanica, Natchez Trace
Germanica, Neptune's Wine
Germanica, Oklahoma Bandit
Germanica, Peggy Sue
Germanica, Rajah Brooke
Germanica, Red Red Wine
Germanica, Sable
Germanica, Salonic
Germanica, Senlac
Germanica, Sharp Dressed Man



Come Check Out Our Perennials

Use SUPERthrive and Multicoat when planting for the fastest start.

Germanica, Sunset Sky
Germanica, That's All Folks
Germanica, War Chief
Germanica, Wine and Roses
Germanica, Wintry Sky
Germanica, Glowing Seraphin
Pallida Albo Variegata **NEW**
Sibirica, Butter and Sugar
Sibirica, Miss Apple
Sibirica, Pink Parfait
Sibirica, Sun Comes Up **NEW**
Sibirica, Tipped in Blue **NEW**
MANY MORE VARIETIES

KNIPHOFIA, Red Hot Poker

Alcazar
Flamenco
Rocket Red Glare

LAMIUM, Spotted Dead Nettle

Anne Greenaway
Ghost
Pink Pewter
Red Nancy

LAVANDULA

Annet
Big Time Blue & White Combo
Hidcote Blue
Imperial Gem
Sweet Romance

LEUCANTHEMUM, Shasta Daisy

Banana Cream II
Madonna
Marshmallow
Real Charmer
Real Sunbeam
Spun Silk
Sweet Daisy Rebecca

LIATRIS, Blazing Star

Blazing Star **NEW**
Spicata
Spicata, Kobold

LIGULARIA, Ragwort

Bottle Rocket

LILIUM, Lily

Asiatic, Bloom Fusion Tanager
Asiatic, Forever Susan
Asiatic, Pot Loom Fusion Oriole
Asiatic, Sugar Love
Hybrid Kaveri
La Apricot Fudge
Lily Looks Tiny, Bee
Lily Looks Tiny, Cosmic
Lily Looks Tiny, Ghost
Lily Looks Tiny, Massive **NEW**
Lily Looks Tiny, Nugget
Lily Looks Tiny, Ranger
Oriental, After Eight
Oriental, Big Smile
Oriental, Captain Tricolor
Oriental, Carbonero **NEW**
Oriental, Roselily Anouska
Oriental, Roselily Azra **NEW**
Oriental, Salmon Party **NEW**
Oriental, Sempione **NEW**
Oriental, Starfighter
Oriental, Stargazer Pink/Red
Oriental, Sunny Bliss
Oriental, Sunny Martinique **NEW**
Oriental, the Edge
Oriental, Trumpet Sempione
Roselily, Esra
Roselily, Nowa

LIRIOPE

Spicata

LOBELIA, Cardinal Flower

LUPINE

Gallery, Blue
Gallery, Mixture
Gallery, Pink
Gallery, Red
Gallery, Yellow

LYSIMACHIA, Loosestrife

MONARDA, Bee Balm

Balmy Tricolor
Bee Mine Red
Electric Neon Purple
Lavender Taffeta
Leading Lady, Amethyst
Leading Lady, Pink
Leading Lady, Razzberry

NEPETA

Cat's Pajamas
Walker's Low

PAEONIA, Peony

Green Sheen
Itoh, Bartzella
Itoh, Canary Brilliants
Itoh, Cora Louise
Itoh, First Arrival
Itoh, Scarlet Heaven
Lactiflora, Alertie
Lactiflora, Alexander Fleming
Lactiflora, Angel Cheeks
Lactiflora, Bowl of Beauty
Lactiflora, Command **NEW**
Lactiflora, Jacorma
Lactiflora, Kansas
Lactiflora, Miss America
Lactiflora, Paula Fay
Lactiflora, Peter Brand
Lactiflora, Pink Hawaiian Coral
Lactiflora, Purple Spider 3-5 Eye
Lactiflora, Red Charm
Lactiflora, Red Magic **NEW**
Lactiflora, Sarah Bernhardt
Lactiflora, Sorbet
Suffruticosa, Golden Crown
Suffruticosa, Burning Colors of Evening
Suffruticosa, Colorful Painting **NEW**
Suffruticosa, Rosy Jade
Suffruticosa, Royal Elegance
Suffruticosa, Snowy Pagoda
Suffruticosa, Sunset
Terminalis
The Fawn 3-5 Eye

PANICULATA, Phlox

Early Magenta **NEW**
Emerald Blue
Emerald Cushion Blue
Emerald Pink
Forever Pink
Fort Hill
Glamour Girl
Oakington Blue Eyes
October Sky **NEW**
Pan, Early Purple Eye
Pan, Early Pink
Pan, Ka-Pow Fuchsia **NEW**
Pink Lightning
Prismatic Pink
Purple Beauty
Red Wings
Scarlet Flame
Sunset Coral
Ultraviolet
White Delight
PAPAYER, Poppy
Bubble Mix
Bubbles Orange
Bubbles, Pink
Bubbles, Yellow
Crimson Peony
Oriental Pizzicato
Royal Wedding

PENNISETUM

Lemon Squeeze **NEW**
Rose Rhinestones

PENSTEMON, Bearded Tongue

PEROVSKIA, Russian Sage

Blue Steel
Bluesette
Denim n' Lace **NEW**
Lacey Blue
Lavender Pop **NEW**
Prime Time **NEW**

PHYSOSTEGIA, Obedient Plant

PLATYCODON, Balloon Flower

POLEMONIUM, Jacob's Ladder

Golden Feathers
Hurricane Ridge

PRIMULA, Primrose

Bright Red
Crescendo Mix
Golden Yellow
Violetta **NEW**
Watercolour Blue **NEW**

PULMONARIA, Lungwort

Spot On

PYRETHRUM

Super Duplex Mix

RUDEBECKIA, Black Eyed Susan

Autumn Colors
Brown Eyed Susan
Cherry Brandy
Chestnut Gold
Chocolate Orange
Goldblitz
Goldsturm
Hirta, Amarillo Gold
Hirta, Toto Gold
Hirta, Toto Lemon
Hirta, Toto Mix
Indiana Summer
Sonora
Sunbeckia, Carolina
Sunbeckia, Graffiti Scarlet
Sunbeckia, Graffiti Cherry
Sunbeckia, Graffiti Caramel
Sunbeckia, Graffiti Peach
Sunbeckia, Laura
Sunbeckia, Lucia
Sunbeckia, Luna
Sunbeckia, Marilyn
Sunbeckia, Maya
Sunbeckia, Ophelia
Sunbeckia, Sarah
Treasure Trove **NEW**

SAGINA, IRISH Moss

Subulata Aurea **NEW**
Treasure Trove **NEW**

SALVIA, Meadow Sage

Big Sky
Blue By You
Blue Marvel
Color Spires Violet Riot
East Friesland
Evening Attire **NEW**
Fashionista Moulin Rouge
May Night
Moulin Rouge **NEW**
Rockin' Blue Suede Shoes
Rockin' Deep Purple
Rose Marvel
Violet Riot **NEW**
White Profusion

SARRACENIA

Conversation Piece

SCABIOSA, Pincushion Flower

SEDUM, Stonecrop

After Dark
Angelina's Teacup
Autumn Fire
Boogie Woogie
Cherry Fizz
Coral Jade **NEW**
Cosmic Comet
Dazzleberry
Dazzling Dynamite
Dream Dazzler
Firecracker
Flaming Carpet
Frosted Fire
Fuldaglut
Golden Moss
John Creech
La Vie En Rose **NEW**
Lemon Coral
Lime Twister
Lime Zinger
Lydium
Matrona
Mojave Jewels Diamond **NEW**
Mr. Goodbud
Neon
Plum Dazzled
Red Carpet
Rock n' Grow Back in Black
Rock n' Round Superstar
Wildfire
Wineberry Delight **NEW**



SEMPERVIVUM, Hens & Chickens

Arctic White **NEW**
Assorted
Black
Chick, Candied Campfire
Chick, Cherry Cordia
Chick, Chocolate Kiss
Chick, Gold Crown
Chick, Golden Nugget
Chick, Honeycrisp Two
Chick, Mint Chocolate Chip
Chick, Mint Marvel **NEW**
Chick, Raspberry Rush
Chick, Sugar & Spice
Coral Red **NEW**
Lemon Waves
Mint Marvel
Pineapple Paradise
Strawberry Kiwi

SPIGELIA, Pink Root

Apple Slices **NEW**
Ragin Cajun **NEW**

STACHY, Lamb's Ear

TRADESCANTIA, Spiderwort

Brainstorm
Nanouk
Pink Panther
Sanna

VERONICA, Speedwell

Baby Bloomer Blue
Blue Skywalker
Pink Potion
Purple Illusion
Purplegum Candles
Skyward Blue
Skyward Pink

MANY MORE VARIETIES NOT LISTED

Availability While
Supplies Last!



PLAN YOUR POND

Add a Splash of Nature to Your Garden

ezpond

- Oxygenators
- Floaters
- Marginals
- Water Lilies



PLAN YOUR POND
Add a Splash of Nature to Your Garden

- Water Lilies
- Floaters
- Marginals
- Oxygenators



WATER PLANTS

Potted Iris
Make an Early Statement This Season

IRIS • MAKE AN EARLY STATEMENT THIS SEASON

IRIS • MAKE AN EARLY STATEMENT THIS SEASON

IRIS • MAKE AN EARLY STATEMENT THIS SEASON

IRIS • MAKE AN EARLY STATEMENT THIS SEASON

SPROUTING BULBS

A Jump Start to Early Spring Blooms



Potted Iris
Make an Early Statement This Season





In Loving Memory...

Wayne's Solutions to Common Lawn & Garden Problems

For more than 50 years, Wayne Cox was known for growing fine plants and vegetables, and for solving the problems that can arise with them.

PROBLEM #1: **The builder took all of the topsoil**, leaving you with a nice looking lawn that will not grow anything. You may have tried to plant grass, and only got a lot of weeds and thin grass as a result. That is because the soil packs down as hard as concrete. The grasses' roots cannot penetrate the hard soil.

SOLUTION:



We have a product that we have used on our field for 5 years. It really works, breaking the soil compaction. One inch of rain will make it go 1 ft. deep in the soil. For trees and plants with longer roots 4 inches of rain will loosen the soil 4 ft. deep. The product is called LI'L PERK- Soil Conditioner. LI'L PERK comes in an 8oz. Bottle, and can be mixed 1 oz. per 4 gal. of water for coverage of 5,000 sq. ft. An 8 oz. Bottle will cover 40,000 sq. ft. (approx. 1 acre).

Use LI'L PERK twice during the first year, once in spring and again in the fall. After that apply LI'L PERK only one time a season to keep soil loose. LI'L PERK can also be used with a fertilizer for food for the plants. Plants are like your car, the car needs gas or will not keep going. Your plants need nourishment too. LI'L PERK can be used on gardens, flowerbeds, trees and shrubs. Without this product your plant's roots will stay close to the surface, because they can't get down through the hard pan soil. LI'L PERK will loosen the soil allowing for deeper root penetration. A deeper root system can more easily draw up moisture, yielding better results. In dry weather, your plants will fail without moisture. We also have an ORTHO PROBLEM SOLVER BOOK to help you with the proper chemicals to use.

PROBLEM #2: **Rabbits and deer** think you are growing a garden, trees and roses only for them to feed on. Most repellents work by leaving a bad taste on the leaves. This only discourages the animals AFTER they have destroyed the plant.

SOLUTION:



Finally, we have a product that will drive away the animals without sacrificing your plants. Liquid Fence Animal Repellent works by a smell. They think your plants are not edible vegetation, and they go to another area, leaving your plants intact. Liquid Fence works by training the animals to avoid your plants and remains effective through the colder months as well. With normal rainfall amounts, Liquid Fence will last a year. If we have an extreme amount of rain, you will need to put on a second application. We have a ready to use bottle or a concentrate for larger areas. YES. "it really does work!" GUARANTEED. You must be 100% satisfied with Liquid Fence or we will refund your purchase price. This product is environmentally safe. Liquid Fence uses non-toxic ingredients and is biodegradable. It is safe to use near people and pets when used as directed.

PROBLEM #3: **Grub worms, moles, Japanese beetles**, all are related to cause a lot of grief. This is how the cycle works: Starting in the spring, the grub worms will come up close to the surface, eating roots off the grass. Then the moles go after the grub worms, tearing up your grass even more. This damaging process goes on until about late June into July, when the grub worms hatch into hungry Japanese beetles. The mature beetles fly everywhere looking for large amounts of something good to eat, devouring their favorite plants and trees regardless of who's property the plants may be on. After that, they breed and dive down on the closest nice place to lay their eggs, approximately 25 or more per beetle. In September and October, the grubs hatch out and look for food (any grass roots you have left) to get ready for winter so they can come back up and greet you in the spring. If we do nothing, they will be soon be so thick there will be nothing left.

SOLUTION:

The best we can do, as there is no complete way to get rid of the problem, is to reduce these pests to help have less of a problem. April and May: This is the best time for lawn grub killer. Use after a rain, when the hungry grubs are close to the surface. The rainwater will activate the grub killer. Less grubs will mean less moles chasing after the grubs. Late June, July, & first part of August: After the grubs change to Japanese beetles, use spray on plants they like to eat. It helps, but they still eat your plants. Beetle traps will catch them on days the sun shines. However, the trap must be located away from plants you want to save. beetle traps have a sex lure on it and the beetles go crazy to get in the trap. Remember each beetle can lay up to 25 eggs. If the trap gets full very quick it will hold over 1,000 beetles. Multiply that number by the amount of eggs they lay, and you could prevent 25,000 beetles a day when they are in full flight over your property. If the trap draws in beetles from surrounding areas, you are reducing the problem in a positive way.

PROBLEM #4: Plant a tree in **hard clay soil** and the tree may live if you have enough rain, or water it.

SOLUTION:

Things to help make a tree grow better, dig a square hole, not a round hole. The roots will grow in circles in a round hole. With a square hole, the roots come to corner and go straight out the hole. LI'L PERK will loosen the soil for better root penetration and SUPERthrive will get it going. When planting, also use with fertilizer for better growth. What the numbers on fertilizer mean: as the number goes higher, the ingredient gets stronger. The first number is for NITROGEN, aids in the growth of green plants. The second number is for PHOSPHATE, which yields better flowers and blooming plants. The third number is for POTASH, which gives better root growth.

PROBLEM #5: **Moles and Ground Squirrels** tearing up your yard or garden.

SOLUTION:

Put some castor beans in the mole run. When the mole travels through the tunnel and finds a seed and eats it, he is done. The bean is very deadly. For ground squirrels, put the castor beans out where they will steal them. The squirrels will take the beans back to their dens and eat them. Bye, bye, squirrels.

PROBLEM #6: **Ground needs to loosen up.**

SOLUTION:

Buckwheat planted in June will mature by fall. It helps bees when in flower, and loosens soil very well.

PROBLEM #7: **Need a winter cover crop for your garden.**

SOLUTION:

Use Crimson-Clover All Mix. Planted in September or early October, it grows all winter. In the spring, chop it up with a lawn mower and till when you get ready to plant the garden.

PROBLEM #8: **Fall Mums won't come back in the spring.**

SOLUTION:

After all green is gone in late fall, cut tops off at ground level. When ground freezes solid, pile approx. 1 ft. tall pile of straw over roots. Remove straw in late March. Mums get in trouble when it warms up in January or February. They think spring is here and start to grow, then it gets cold again and kills the new growth.

PROBLEM #9: **Birds or cutworms cutting off plants after you put in the garden.**

SOLUTION:

For cutworms on tomatoes, put 2 small wooden matchsticks next to the stem, when the cutworm wraps around the stem, the wood is too hard to cut off. Birds, attracted to the bright green pepper and tomato plants, fly down and cut them off. If you can camouflage the plants for a few days, the birds get used to them and leave them alone. Use tall weeds or a tree branch with leaves so the birds can't see the new plants you've just planted. The weeds won't grow.



Use SUPERthrive and Osmocote when planting for the fastest start.

Sweet Potatoes

Super source of vitamin A

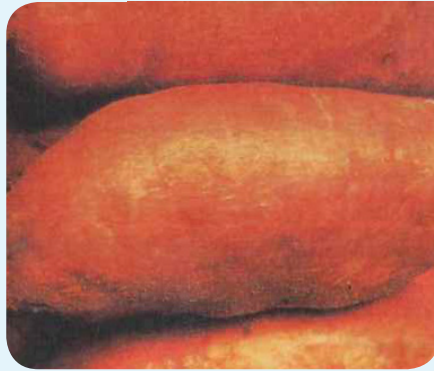
Many people think sweet potatoes grow only in the south, but you can grow them as far north as zone 3! *Note: We ship the plants after weather has warmed in your area.*

Beauregard

Quick Pick for the North

Matures fast. Large reddish tubers have moist, deep orange flesh. High yields; resists cracking. Plants. 90 DAYS

12 Plants For \$6.98
25 Plants For \$11.98



SWEET POTATO PLANTS

— Beauregard – This new sweet potato from Louisiana is out-yielding standard varieties across the board. Most important, for our northern customers, it produces big sweet potatoes in 90 days, over 5 weeks earlier than any other variety. Extremely productive, with rose skin and deep orange flesh, Fusarium wilt resistant. Plant after frost danger up to 4th July, will mature by Oct. 4th

In Loving Memory...



Our Founder, Wayne Cox

We Raise Our Own Bedding Plants

ANNUAL BEDDING PLANTS

We grow and handle a very large selection of annual bedding plants and summer flowering potted plants. Whether your planting is in the sun, shade or a combination of both, we can help you select the right plant material.

As a general rule, bedding plants should not be planted until about May 10th in this area; however, Petunias, Pansies, Snapdragons and many perennial plants can be planted two to three weeks earlier.



2025 TEST GARDEN



ANNUAL FLOWERS IN PACKS



AGERATUM

AGERATUM

2 Pack \$1.98 / 4 Pack \$2.49
 __ Aloha Dwarf Blue

ALYSSUM

2 Pack \$1.98 / 4 Pack \$2.49
 __ Violet
 __ Deep Rose
 __ White



ALYSSUM

BEGONIA, DOUBLE BLOOM & NON STOP

Non-Stop
 804 4 pack \$4.49
 4 1/2" Pot \$5.49

Double Begonias
 4 1/2" Pot \$5.49



NON STOP BEGONIA

BEGONIA, DRAGON WING

4 1/2" Pot \$5.98 10 or more \$5.49
 __ Red

BEGONIA, HYBRID

2 Pack \$1.98 / 4 Pack \$2.49
 __ Bronze-Leaves
 (White - Red - Pink - Deep Rose)
 __ Green Leaf
 (White - Red - Pink - Deep Rose)



HYBRID BEGONIAS

BEGONIA, REX

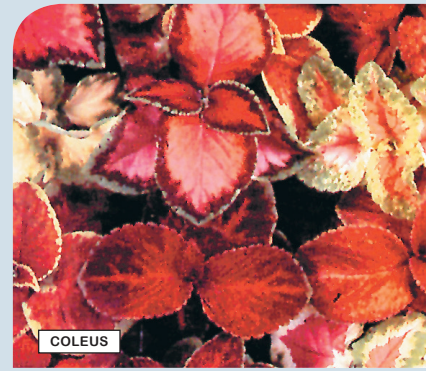
__ 4 1/2" Pot \$5.49

__ 12" Bougainvillea
 Baskets \$39.98

__ 10" Chenille
 Baskets \$23.98

CELOSIA

2 Pack \$1.98 / 4 Pack \$2.49
 __ Kimono Cherry Red
 __ Kimono Mix
 __ Kimono Orange
 __ Kimono Red



CELOSIA

CHRYSANTHEMUMS

25 or more colors
 __ 3" pot \$2.98 each
 18 or more \$2.59 each

CITRONELLA (Mosquito Plant)

4 1/2" Pots \$5.49
 10" Basket \$23.98

COLEUS

2 Pack \$1.98 / 4 Pack \$2.49
 __ Color Pride
 __ Fairway Mix
 __ Rainbow Mix
 __ Velvet Red
 __ Wizard Mix
 __ Wizard Sunset



DAHLIA

COSMOS

Large 804 Pack \$3.98
 __ Sonata Mix

DAHLIA

2 Pack \$1.98 / 4 Pack 2.49
 __ Figaro Imp. Mix
 __ Figaro Orange Shades
 __ Figaro Red Shades
 __ Figaro Violet Shades



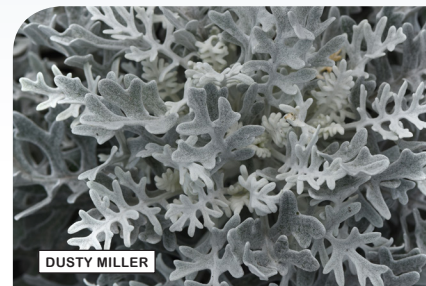
DIANTHUS

DAHLIETTA (Several Colors)

Qt. Pot \$5.49

DIANTHUS

2 Pack \$1.98 / 4 Pack \$2.49
 __ Parfait Mix
 __ Parfait Raspberry
 __ Parfait Strawberry
 __ Venti Crimson
 __ Venti Crimson Eye



DUSTY MILLER

DUSTY MILLER

2 Pack \$1.98 / 4 Pack \$2.49
 __ Silver Dust

__ Eucalyptus Silver Drop
 3" pot \$2.98

FLOWERING KALE

2 Pack \$1.98 for Fall

Cox's – The Place to Go for Things That Grow!

NOTICE

DUE TO A INCREASE IN DEMAND FOR BEDDING PLANTS, WHICH WE GROW. SOME ITEMS WILL BE IN SHORT SUPPLY. WE CANNOT PREDICT A YEAR IN ADVANCE WHICH ITEMS TO INCREASE. YOU WILL WANT TO SHOP AS EARLY AS POSSIBLE, WEATHER PERMITTING, WHILE OUR INVENTORY IS COMPLETE.

(Prices Subject to Change)



ANNUAL FLOWERS IN PACKS

HARDY GARDEN FALL MUMS

Started and blooming plants may be planted in the spring, or if you prefer, we will have larger container plants available in the late summer or fall for "instant" color.



FALL MUMS



GAZANIA

FOUR O CLOCKS

Large 804 Pack \$3.98

FUCHSIA 5 Varieties

4" Pot \$5.49 / 10 or more \$4.98

10" Hanging Basket \$23.98

GAZANIA

Large 804 4 Pack \$3.98

Flat for \$28.98

- ___ Daybreak Red Stripe
- ___ Daybreak Yellow
- ___ Kiss Frosty Flame Mix
- ___ Kiss Frosty Mix
- ___ Kiss Frosty Red
- ___ Kiss Frosty Yellow
- ___ Kiss Orange Flame
- ___ Kiss Rose
- ___ Kiss Yellow Flame

GERANIUMS, HYBRID

From Seed 804 Packs of 4 \$3.98

Flat of 32 Plants \$28.98

- ___ Maverick Pink 4" Pots \$2.98 ea.
- ___ Maverick Red
- ___ Maverick Star
- ___ Maverick White
- ___ Pinto Deep Red
- ___ Pinto Rose
- ___ Pinto Salmon
- ___ Pinto Scarlet



HYBRID GERANIUMS

GERANIUMS, VEGETATIVE TYPE

Vining 4 1/2" pots \$4.98 each

12" Hanging Basket \$29.98

GERANIUMS, VEGETATIVE TYPE DESIGNER & FANCY LEAF

In 23 Colors

5 1/2" pots \$5.98

GOMPHRENA

2 Pack \$1.98 / 4 Pack \$2.49

- ___ Gnome Purple

PROVEN WINNER PLANTS

Several kinds to choose from in Proven Winner

4 1/2" \$5.49



GYPSOPILIA

3" Pot \$2.98

- ___ Gypsy Deep Rose Dbl.

REGULAR IMPATIENS

3 Pack \$2.49

Flat \$23.98

- ___ Blue Pearl
- ___ Coral
- ___ Lipstick
- ___ Orange
- ___ Red
- ___ Red Starburst
- ___ Rose
- ___ Ruby
- ___ Salmon
- ___ Super Elfin Mix
- ___ Violet
- ___ White

HYPOESTES

Large 4 Pack \$3.98

- ___ Splash Burgundy
- ___ Splash Mix
- ___ Splash Pink
- ___ Splash Red
- ___ Splash Rose
- ___ Splash White



IMPATIENS



IMPATIENS, NEW GUINEA

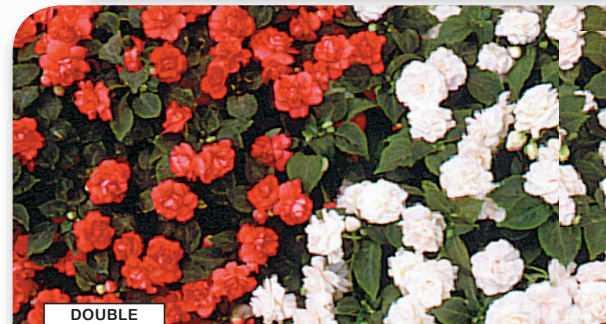
4 1/2" Pots \$5.49

10" Hanging
Basket \$23.98
Several Colors

LOBELIA

2 Pack \$1.98 / 4 Pack \$2.49

- ___ Riviera Midnight



DOUBLE

IMPATIENS, DOUBLE

4 1/2" Pot \$5.49

10" Hanging Basket \$23.98 Several Colors

- ___ Fiesta

ANNUAL FLOWERS IN PACKS



MARIGOLDS

MARIGOLDS, EXTRA DWARF

2 Pack \$1.98 / 4 Pack \$2.49

- __ Durango Bolero
- __ Durango Mix
- __ Durango Orange
- __ Durango Red
- __ Durango Tangerine
- __ Harmony
- __ Janie Bright Yellow
- __ Janie Orange

TAISHAN

Large, Better Bloom, Stronger Stems, Center of Bloom Resists Rot.

2 Pack \$1.98

- __ Yellow
- __ Gold
- __ Orange
- __ Mix

MELAMPODIUM

4 Pack \$2.49

- __ Gold

MORNING GLORY

Large 4 Pack \$ 3.98

- __ Blue

MOSS ROSE

2 Pack \$1.98 / 4 Pack \$ 2.49

- __ Fuchsia
- __ Orange
- __ Scarlet
- __ Mix
- __ Peppermint



MOSS ROSE

NASTURTIUM

Large 4 Pack \$ 3.98

- __ Jewel Mix

NICOTIANA

2 Pack \$1.98 / 4 Pack \$2.49

- __ Saratoga Red
- __ Saratoga Purple Bicolor



PANSIES

ORNAMENTAL MILLET

3" \$2.98

- __ Purple Majesty

PANSIES

2 Pack \$1.98 / 4 Pack \$2.49

- __ Colossus Mix Blotch
- __ Colossus Purple Blotch
- __ Colossus Red Blotch
- __ Colossus Neon Violet
- __ Majestic Giant Mix
- __ Matrix Yellow w/Blotch
- __ Matrix Beaconsfield
- __ Matrix Solar Flare

THUNBERGIA

__ Black Eyed Susan 10" Hanging Basket \$23.98

Large 4 Pack \$ 3.98

- __ Black Eyed Susan Mix
- __ Susie Orange w/Eye
- 8" w/Trellis \$13.98



TORENIA

TORENIA

2 Pack \$1.98 / 4 Pack \$ 2.49

- __ Duchess Blue & White
- __ Duchess Burgundy
- __ Duchess Deep Blue
- __ Duchess Pink

PETUNIAS, HYBRID GRANDIFLORAS

2 Pack \$1.98 / 4 Pack \$2.49

- __ Blue Frost
- __ Debonair Black Cherry
- __ Dream Burgundy
- __ Debonair Dusty Rose
- __ Dream Midnight Blue
- __ Dream Mix
- __ Dream Picotee Burgundy
- __ Dream Picotee Red
- __ Dream Pink
- __ Dream Red
- __ Dream Salmon
- __ Dream Sky Blue
- __ Dream Water Fall Mix
- __ Dream White
- __ Fire Frost (Red)
- __ Merlin Blue Morning
- __ Pretty Grand Deep Pink
- __ Pretty Grand Midnight



PETUNIA

- __ Dream Patriot Mix
- __ Pretty Grand Purple
- __ Pretty Grand Red
- __ Pretty Grand Rose
- __ Pretty Grand Summer
- __ Pretty Grand White
- __ Red Star
- __ Sophistica Blackberry
- __ Sophistica Lime Bicolor
- __ Sugar Daddy
- __ Tritunia Crimson Star
- __ Tritunia Purple Star

PETUNIAS, HYBRID DOUBLE

2 Pack \$1.98 / 4 Pack \$2.49

- __ Burgundy Madness Dbl
- __ Red
- __ Rose

PETUNIAS, SUPER CASCADE

2 Pack \$1.98 / 4 Pack \$2.49 For Boxes or hanging baskets

- __ Blue
- __ Rose
- __ Pink
- __ White
- __ Red

12" Hanging Basket \$25.98 Several Colors, Vining Type Wave & Easy Wave Red

(Prices Subject to Change)

ANNUAL FLOWERS IN PACKS

PETUNIAS, WAVE PETUNIAS

- Easy Wave Burgundy Star 3" – Pack (1) \$2.98 each
- Easy Wave Coral reef 3" – Pack (1) \$2.98 each
- Easy Wave Violet 3" – Pack (1) \$2.98 each
- Easy Wave Pink Passion 3" – Pack (1) \$2.98 each
- Easy Wave Red 3" – Pack (1) \$2.98 each
- Easy Wave Rosy Dawn 3" – Pack (1) \$2.98 each
- Easy Wave Yellow 3" – Pack (1) \$2.98 each
- Easy Wave White 3" – Pack (1) \$2.98 each
- Blue Wave 3" – Pack (1) \$2.98 each
- Lavender Wave 3" – Pack (1) \$2.98 each
- Misty Lilac Wave 3" – Pack (1) \$2.98 each
- Pink Wave 3" – Pack (1) \$2.98 each
- Purple Wave 3" – Pack (1) \$2.98 each
- Red Velour 3" – Pack (1) \$2.98 each
- **Wave 3" – Pots – 18 per flat, 18 or more \$2.79 ea.**

**12 in. Basket
Only \$25.98!**



VERBENA

Large 4 Pack \$3.98

- Obsession Mix
- Red w/ Eye
- Scarlet

SALVIA

2 Pack \$1.98 4 Pack \$2.49

- Evolution Violet
- Lighthouse Purple
- Red Hot Sally
- Rhea Blue
- Victoria Blue
- Vista Mix
- Vista Purple
- Vista Red
- Vista Red & White
- Vista White

SNAPDRAGON

2 Pack \$1.98 / 4 Pack \$2.49

- Med-Tall & Liberty Varieties
- Mix
- Mix, Red & Yellow
- Montego Sunset
- Montego White
- Snapshot Burgundy
- Snapshot Burgundy Bicolor
- Snapshot Red
- Violet
- Yellow

SUNFLOWER

Large 4 Pack \$3.98

- Ballad
- Coconut Ice
- Miss Sunshine

SWEET PEA

Large 4 Pack \$3.98

- HG Org Mix



VINCA

Large 4 Pack \$3.98

- Apricot Pacifica
- Pacifica Blush
- Pacifica Deep Orchid
- Pacifica Polka Dot
- Pacifica Really Red
- Pacifica Mix
- Titan Icy Pink
- Titan Dark Red
- Titan Mix
- Victory Blue
- Victory Cranberry
- Victory Grape
- Victory Lavender
- Victory Mix
- Victory Purple
- Victory Red
- Victory White



VIOLAS

2 Pack \$1.98 / 4 Pack \$2.49

- Admire Orange Purple Wing
- Sorbet Blue True
- Sorbet Denim Jump Up



ZINNIA

2 Pack \$1.98

- Profusion Cherry
- Zinnita Mix
- State Fair Mix



GROW YOUR OWN VEGETABLES

Why not have Mother Nature help you lower your high grocery bill?

Grow your own vegetables in your spare time. Use your backyard to save lots of money and enjoy the very fresh flavor you can't buy at the store.

For example – the average yield of some vegetables:

1/4 lb of **GREEN BEAN SEED** will produce approximately 10 lbs. of green beans.

Four **TOMATO PLANTS** will produce an average of 20 lbs of tomatoes per plant.

Four **CABBAGE PLANTS** will produce an average 5 lb. cabbage head per plant.

Four **PEPPER PLANTS** will produce an average of 15 lbs. of peppers.

10 lbs. of **SEED POTATOES** will yield up to 100 lbs. of potatoes.



12 **SWEET POTATO PLANTS** will yield approximately 50 lbs. of sweet potatoes.

1 bundle of **SWEET ONIONS** (approximately 30 plants) will yield approximately 15 lbs. of onions.

1 dip of **BEET SEED** will yield approximately 40 lbs. of beets.

1/4 lb. of **CORN SEED** will yield approximately 125 ears of corn.

1 dip of **RADISH SEEDS** will yield approximately 25 lbs. of radishes.

1 dip of **LETTUCE SEEDS** will yield approximately 10 lbs. of lettuce.

Now, this is just an average yield, you could get more or less, depending on weather conditions. Fertilizer will also help make your plants grow better and give you a better yield. The more you plant the more you will get in return. Just remember that you will also have to combat Mother Nature's pest problems by spraying your plants!

While we were raising our seven children and trying to make ends meet, having a large garden was a big help by canning and freezing the vegetables we had raised ourselves!! Thank you for so many great years...

The Cox's



ASPARAGUS

Asparagus plants are dug dormant and put into cold storage until ordered by the customer. They are then separated, graded and bundled 25 per bundle. Most of our asparagus qualify as 2 year old asparagus, even though they are 1 year #1 crowns.

__ Mary Washington \$1.29 each **25 for \$16.98**
other seed catalog prices 25 for \$34.95

__ Jersey Knight \$1.49 each **25 for \$22.98**
other seed catalog prices 25 for \$42.95

__ Purple Passion \$1.49 each **25 for \$22.98**
other seed catalog prices 25 for \$41.95



CUCUMBER – MELON – SQUASH

\$2.29 2 Pack Plants ready to set out

- __ Cantaloupe - Ambrosia
- __ Cantaloupe - Burpee Hybrid
- __ Cantaloupe - Orange Sherbert
- __ Cucurbit - Burpee Hybrid
- __ Cucurbit - Burpless Hybrid Tasty Green
- __ Cucurbit - Ever-Bearing
- __ Cucurbit - Gherkin Small Size
- __ Cucurbit - Boston Pickling
- __ Cucurbit - Spacemaster (Bush)
- __ Gourds - Several Small Mix
- __ Pumpkins - Howden
- __ Pumpkins - Jack-B-Little
- __ Squash - Acorn
- __ Squash - Butternut
- __ Squash - Crookneck
- __ Squash - Spaghetti
- __ Squash - Straight Neck
- __ Squash - Zucchini (Black)
- __ Watermelon - All Sweet
- __ Watermelon - Sugar Baby
- __ Watermelon - Charleston Grey
- __ Watermelon - Crimson Sweet

ANNUAL VEGETABLES IN PACKS

We grow and schedule our vegetable transplants to provide you with a continual supply of fresh quality plants for your gardening needs.

We suggest, for this area, that cabbage, cauliflower, broccoli, brussel sprout and strawberry plants be planted early, from mid-April on, and tomatoes, eggplants, peppers, cucumbers and melons be planted from mid-May on.

Large Medium Pack of 6 – \$2.98
Small Medium Pack of 4 – \$2.49
Small Pack of 2 – \$1.98

BROCCOLI

- Baby Aspacroc (Broccolini)
2-\$1.98 / 4-\$2.49
- Green Magic 75 days Full Size
2-\$1.98 / 4-\$2.49 / 6-\$2.98

BRUSSEL SPROUTS

- Hybrid Jade Cross-E 80 days
2-\$1.98 / 4-\$2.49 / 6-\$2.98



BROCCOLI

CABBAGE 2-\$1.98 / 4-\$2.49 / 6-\$2.98

- Early Dutch 70 days
- Early Jersey Wakefield 62 days
- Golden Acre 63 days
- Quick Start 65 days
- Late Flat Dutch 105 days
- OS Cross (Large - to 25+ lbs.) 80 days
- Red Acre 76 days
- Spring Crisp Chinese Cabbage 63 days
- Stone Head Hybrid 55 days
- Wisconsin All Season 90 days



CABBAGE

CAULIFLOWER

- Snowcrown 65 days
2-\$1.98 / 4-\$2.49 / 6-\$2.98

CELERY

- Gold Self Blanching 8 days
2-\$1.98 / 4-\$2.49 / 6-\$2.98

SWEET PEPPERS

- 2-\$1.98 / 4-\$2.49 / 6-\$2.98
- Bell Boy (2 Pack only)
- Big Bertha (2 Pack only)
- Blushing Beauty
- Candy Cane Red
- California Wonder
- Giant Marconi (2 Pack only)
- Chinese Giant (World Beater)
- Chocolate Beauty
- Cubanelle, Frying Type
- Fooled You
- Yellow Bell
- Goliath Hybrid (2 Pack only)
- Lady Bell Hybrid (2 Pack only)
- Lilac Bell
- Pimento Elite
- Purple Beauty
- Sweet Banana



SWEET PEPPERS

BURPEE

SWEET PEPPERS

- Great Stuff
- Thunder Bolt
- 3" pot \$2.98**
- 18 or more \$2.79 ea.**

- Gypsy Hybrid (2 Pack only)
- Red Beauty (2 Pack only)
- Orange Bell
- Super Heavyweight
(Green to Yellow) (2 Pack only)
- Snackable Red

EGGPLANT

- Black Beauty — Little Fingers
2-\$1.98 / 4-\$2.49 / 6-\$2.98

HEAD LETTUCE

- Summer Time
(Better for warmer weather)
2-\$1.98 / 4-\$2.49 / 6-\$2.98

HORSERADISH

- Horseradish – 1 gal \$11.98

HOT PEPPERS

- 2-\$1.98 / 4-\$2.49 / 6-\$2.98
- Anaheim (**MILDLY HOT**)
- Basket of Fire 3" Pot \$2.98
- Bhut Jolokia (**GHOST PEPPER**)
3" pot \$2.98
- Big Chilli (**MILD**)
- Cajun Belle (**MILDLY HOT**)
- Caribbean Red Hot (**HOT**)
- Cayenne Long Slim
- Habanero (**HOT-HOT**)
- Hungarian Yellow Wax
- Jalapeno
- Mexibell (2 Pack only)
- Poblano
- Red Cherry (**HOT**)
- Serrano Hot Chili
- Super Red Chili (2 pk Only)
- Tabasco
- Time Bomb (**CHERRY**)

RHUBARB

- Victoria – 1 gal. Pot \$10.98
- Canada Red – 1 1/2 gal. Pot \$13.98

STRAWBERRIES IN BUNDLES OF 25

- Earliglow
- Cabot - Huge size fruit.
Winter hardy. Excellent flavor, very good
disease resistance
- Flavorfest (pictured) - Very large size.
Excellent flavor, disease resistance
- Honeoye (Honey "O") - Very large, heavy
yielder. Best flavor. Grow on lighter soil
- Jewel - Large, firm wedge-shaped. Longer
season yields Excellent color and quality.
- Seascape (everbearing)
Large Juicy, well shaped berries. Superb flavor.
Produces fruit from spring to fall.

25 for \$13.98, 50 for \$24.98, 100 for \$45.98

HOW HOT IS HOT?

We've ranked the taste of our hot peppers from hottest (1) to mildly hot (10).

Variety	Rank
Caribbean Red Hot	1
Habanero	2
Tabasco G	3
Super Chili	4
Cayenne Long Slim	5
Cherry Bomb	6
Jalapeño M	7
Hungarian Yellow Wax	8
Big Chili	9
Mexibell	10

Note: Pepper pungency is about 10 times greater after drying. Also peppers grown under stress and/or high heat and humidity will also be hotter than hot peppers grown under moderate climatic conditions.

BURPEE

HOT PEPPERS

- Big Guy
- Jalapeno Gigante
- 3" pot \$2.98**
- 18 or more \$2.79 ea.**

STRAWBERRIES

Large 4 Pack \$4.98



STRAWBERRIES

Flavorfest

(Prices Subject to Change)

ANNUAL VEGETABLES IN PACKS

COLLARDS

Large 4 pk - \$3.98

LETTUCE

Large 4 pk - \$3.98

- __ Salad Bowl
- __ Tasty Stir Fry Mix

OKRA

Large 4 pk - \$3.98

- __ Spineless Clemson

PEAS

Large 4 pk - \$3.98

- __ Super Sugar Snap

SPINACH

Large 4 pk - \$3.98

- __ Tasty Smooth Leaf

RADISH

Large 4 pk - \$3.98

- __ Rainbow Mix

ONION PLANTS

Large 4 pk - \$3.98

- __ Candy
- __ Red
- __ White Spanish
- __ Yellow Spanish

TOMATOES

FIELD TYPE IN PACKS

Large Medium Pack of 6 - \$2.98

Small Medium Pack of 4 - \$2.49

Small Pack of 2 - \$1.98

- __ Beefheart Heirloom
- __ Beefsteak (large) Heirloom
- __ Brandywine Pink
 - ...very low acid and meaty
- __ Cherokee Purple Heirloom
 - ...used by Indians
- __ Delicious (large size)
- __ Edd's Red & Yellow Bi-color
- __ Great White
- __ Oxheart Heirloom - \$1.98 (2 pack only)
- __ Portuguese Roma Large
- __ Red & Yellow Striped Mr. Stripey
- __ Red Brandywine
- __ Rutgers VF (reg. size)
- __ Yellow Brandywine



ONLY \$24.98 a flat

SAVE!
SAVE!
SAVE!

Problem: Tomato Early Blight

Approximately in the mid 1980's we had a blight hit the corn crop. It also hit the tomatoes and has been a problem ever since. Once the blight gets into the soil, the rain splashes it back up to the bottom leaves. It also travels as a spore which settles on dew drops and evaporates to the rain clouds, which can travel up to thirty miles and come down as rain on your garden... and now you have the blight.

There are over 300 kinds of tomatoes that are non-resistant to the blight. We had been spraying a fungicide which cost \$17.00 for 9 ounces. We have found that Epsom Salts has the same ingredients as the fungicide. We sell the Epsom Salts in a 1 lb. pkg for \$1.98 We had very good results last year from using the Epsom Salts. There was no blight in our garden all the way to frost!



HOW TO USE EPSOM SALTS:

Put 1 tablespoon in the bottom of the hole and mix in the soil. Place the tomato plant in the hole and cover the hole. Then mix 1 tablespoon of Epsom Salts to a gallon of water and water the plant in.

If later you see any blight signs on bottom leaves, then mix 2-1/2 Tablespoons per gallon of water and spray plants until well covered. Also spread some on the ground under the plants (1 or 2 tablespoons will be enough). **We have had several people tell us it worked for them!**

SWEET POTATO PLANTS

(See page 11 for information on Sweet Potatoes.)

For Improved Beefheart, try the OXHEART TOMATOES

Fruits are heart shaped with meaty flesh and very few seeds. They can range from one to three pounds.



BURPEE TOMATOES

- __ 4th of July
- __ Big Daddy
- __ Brandy Boy
- __ Fresh Salsa

- __ Napa Grape
- __ Orange Zinger
- __ Steakhouse
- __ Supersauce

3" pot \$2.98
18 or more \$2.79



SMALL SIZE IN PACKS

2 Pack \$1.98 / 4 Pack \$2.49

- __ Golden Sweet
- __ Roma
- __ La Roma
- __ Park Whopper Jr.
- __ Red Pear
- __ Red Grape (Santa) 3" \$2.98
- __ Sun Sugar 2 Pack \$1.98
- __ Sweet 100
- __ Sweet Million
- __ Tomatillo Grande Verde
- __ Tomato Berry Super Sweet
- __ Yellow Pear
- 3" pot - \$2.98



VERY EARLY PLANTS

- __ Better Bush, in 3 gallon Bucket with Tomatoes on vine on trellis \$12.98 each, or __ 5 1/2" square pot smaller size
- __ Better Bush plant \$4.49 each
- __ Tomatoes in a 12" Basket \$16.98

VEGETABLE PLANTS & FLOWERS

- Large Medium Packs (6 plants per pack).. \$2.98 each
72 plants per flat. 12 packs in flat.
- Small Medium Packs (4 plants per pack) \$2.49 each
48 plants per flat per pack. 12 packs in flat.
- Small Packs (2 plants per pack) \$1.98 each
2 pack - 36 plants per flat. 18 packs in flat.

Straight flats of above packs only (Not Mixed) \$24.98 FLAT

This Is Where Good Gardening Begins!

Save 15¢ Lb. Off These Prices

With Purchase of 5-Lbs. or More Per Item

**"COX'S — The Place To Go For Things That GROW!"
SPREAD THE WORD!**

NOTE

We Can Ship Garden Seed

(Shipping & Handling Added)

BEANS, BUSH



BUSH BEANS

COMPARE OUR LOW PRICES
per ¼ lb. per ½ lb. per lb.

— Blue Lake (55 Days) white seed (stringless).....	3.49	4.98	7.98
— Burpee Stringless Green Pod (50 Days)	2.98	3.98	6.98
— Contender (54 Days) (Stringless – 6-7" long)...	2.49	3.49	5.98
— Dwarf Horticultural Taylor Shell Out (54 Days) (Bush) (stringless in snap stage)	2.49	3.49	5.98
— Green Crop (52 Days) ...	2.98	3.98	6.98
— Jade (60 Days) ^{Stringless} _{High Yield} ...	4.98	6.98	9.98
— Kentucky Wonder (Bush Type) (45 Days - stringless, white seed).....	3.98	5.98	8.98
— Purple Pod Royalty (51 Days) (Stringless).....	2.98	3.98	6.98
— Provider (50 Days) (Tender, low-fiber) Stringless	2.49	3.49	5.98
— Roma II (59 Days) Stringless	2.49	3.49	5.98
— Slenderette (53 Days) Stringless	2.98	3.98	6.98
— Tender Green (53 Days) (stringless - 6" long).....	2.49	3.49	5.98
— Tenderette (56 Days) (Stringless - freezes well)	2.49	3.49	5.98
— Top Crop (49 Days) (stringless)	3.98	5.98	8.98
— White Half Runner (60 Days) Yield heavy (stringless) (2-1/2 - 3')	2.49	3.49	5.98



COMPARE OUR LOW PRICES

per ¼ lb. per ½ lb. per lb.

BEANS, BUSH LIMA

— Fordhook No. 242 (70 Days)	3.98	5.98	8.98
— Green Henderson (65 Days)	3.98	5.98	8.98
— Jackson Wonder (colored)(65 Days) ...	5.98	7.98	10.98
— White Henderson (65 Days)	2.98	3.98	6.98

BEANS, POLE LIMA

— Giant Calico (88 Days)	7.98	9.98	12.98
— Large Red Speckled (88 Days)	7.98	9.98	12.98

BEANS, POLE RUNNER (6 FT)

— Blue Lake (60 Days) Stringless	3.98	4.98	7.98
— Kentucky Blue (58 Days) Stringless	10.98	14.98	18.98
— Kentucky Wonder, Brown (65 Days)	3.98	4.98	7.98
— Kentucky Wonder Wax (65 Days)	4.98	5.98	8.98
— Rattlesnake (65 Days)	4.98	6.98	9.98

BEANS, SOUP

— Pinto Bean (90 Days).....	2.98	3.98	6.98
— Red Kidney (90 Days)	2.98	3.98	6.98

BEANS, YELLOW BUSH

— Top Notch Golden Wax (50 Days)	3.49	4.98	7.98
--	------	------	------

NOTE

Garden seed is in high demand this year and there are several varieties that are unavailable.



COMPARE OUR LOW PRICES

	per ¼ lb.	per ½ lb.	per lb.
CORN, HYBRID SWEET (WHITE)			
__ Hickory King (110 days) (White Op.).....	1.98	2.98	4.98
__ Silver King (73 Days) (White).....	16.98	22.98	35.98
__ Silver Queen (92 Days) (White).....	12.98	18.98	30.98
__ Trucker's Favorite (White Op.) (75 Days)..	1.98	2.98	4.98

CORN, HYBRID SWEET (YELLOW)

__ Ambrosia S.E. BI Color (75 Days).....	18.98	24.98	34.98
__ Bodacious (75 Days) Sugar Enhanced	15.98	21.98	32.98
__ Delectable Bi-Color (82 Days).....	18.98	24.98	34.98
__ Early Sunglow (69 Days)	9.98	14.98	25.98
__ Honey N' Pearl Bi-Color (76 Days) Double Sweet..	20.98	30.98	50.98
__ Honey Select Triple Sweet Yellow (79 Days)	18.98	24.98	39.98
__ Incredible (85 Days) Gourmet	16.98	22.98	34.98
__ lochief (88 Days)	5.98	8.98	13.98
__ Kandy Korn (89 Days) High Sugar.....	15.98	21.98	30.98
__ N.K.199 (83 Days)	5.98	9.98	15.98
__ Peaches & Cream E.H. Bi Color (80 Days).....	13.98	19.98	25.98
__ Providence Triple Sweet (82 Days).....	24.98	34.98	45.98
__ Serendipity Bi-Color Triple Sweet (82 Days)	25.98	35.98	49.98
__ Sugar Buns (72 Days).....	19.98	25.98	35.98



YELLOW CORN

OPEN POLLINATED INDIAN CORN

	per 1 oz.	per 2 oz.	per ¼ lb.
__ Mini Ornamental Carousel (110 Days)	2.98	4.98	8.98
__ Ornamental Seneca (110 Days)	2.49	3.98	6.98

Note: Plant corn when soil temperature reaches 55° to 60°

CUCUMBER

	per ¼ oz.	per ½ oz.	per ¼ lb.
__ Boston Pickling (58 Days).....		1.49	1.98
__ Burpee Hybrid	4.98	<i>(15 Seeds)</i>	
__ Burpless Tasty Green (55 Days)	3.98		
__ Bush Pickle		2.98	
__ Early Green Cluster (56-60 Days)		1.49	1.98
__ Gherking Hybrid (50 Days) 15 Seeds .	4.49		
__ Long Green (70 Days).....		1.49	1.98
__ Marketer (55 Days).....		1.49	1.98
__ Marketmore (67 Days).....		1.49	
__ Patio Snacker (39 Days).....	4.98	<i>(15 Seeds)</i>	
__ Spacemaster Bush (60 Days)	1.98		
__ Straight Eight (58 Days)	1.49		

GOURDS

	per ¼ oz.
__ Bottle or Birdhouse (110 Days)	2.98
__ Bushel (10 seeds).....	3.98
__ Dipper (Long Handle, 110 Days).....	2.98
__ Large & Small Mix.....	2.98
__ Luffa Sponge	2.98

SEED POTATO VARIETIES

From our growing experience, use 6-24-24 fertilizer, half the amount of seed potatoes. Put in row before planting and mix into soil. This has always doubled our yield. Also, water is very important. They need 1 inch per week from blooming time until harvest.

Sold by the 50 lb. bag or by the lb.....Market Prices

POTATO GRADE REQUIREMENTS

The **Blue Tag** is issued on lots that have met all field and storage inspection requirements as well as standards higher than the US No. 1 Seed Grade size, condition and physical defects.



KENNEBEC POTATOES

Heavy Yielding and Blight Resistant

RED LA SODA

Red with White Flesh

RED NORLAND POTATOES

Huge Yields in a Hurry

RUSSET POTATOES

Best Choice for Baking

RED PONTIAC POTATOES

Everybody's Favorite Red

YUKON GOLD POTATOES

Early Golden Fleshed



MUSKMELON OR CANTALOUPE

	per 1/16 oz.	per 1/8 oz.	per 1/4 oz.
__ Ambrosia (86 Days) 15 Seeds.....			3.49
__ Burpee Hybrid Cantaloupe (82 Days) 15 Seeds....			3.49
__ Hales Best Jumbo (83 Days)	1.49	1.98	
__ Honey Dew Green (75 Days).....	1.49	1.98	
__ Orange Sherbet (86 Days).....	5.98	<i>(Best Eating Available)</i>	

PEAS

	per 1/4 lb.	per 1/2 lb.	per lb.
__ Alaska (Earliest) (55 Days)	2.98	3.98	5.98
__ California Black Eye.....	2.98	3.98	6.98
__ Laxton's Progress No. 9 (64 Days)...	3.98	4.98	7.98
__ Little Marvel (62 Days)	1.98	2.98	4.98
__ Wando (plant up to July 1st, good hot weather pea) (68 Days).....	1.98	2.98	4.98



PEAS, SNAP (EDIBLE POD)

	per 1/4 lb.	per 1/2 lb.	per lb.
__ Sugar Ann (56 Days)	2.98	3.98	5.98

__ Sugar Snap (68 Days)	1.98	2.98	4.98
----------------------------------	------	------	------



__ Super Sugar Snap (66 Days)	4.98	6.98	9.98
--	------	------	------

PEAS, SUGAR (SNOW PEAS, EDIBLE POD)

__ Dwarf Grey Sugar (75 Days)	1.98	2.98	4.98
__ Oregon Sugar Pod (68 Days)	1.98	2.98	4.98

PEANUTS, SEED

	per 1/4 lb.	per 1/2 lb.
__ Jumbo Virginia (130-150 Days).....	2.29	3.79

CASTOR BEAN

__ (Mole Bean) Per 3/4 Oz.	3.98
---------------------------------	------

PERENNIALS WILDFLOWER MIX

	per 1/2 oz.	per 1 oz.	per 1/4 lb.
__ Midwestern Mix Wildflower.....	4.98	6.98	20.98

POPCORN

	per 1 oz.	per 2 oz.	per 1/4 lb.
__ Purdue - 305 White (105 Days).....	1.79	2.98	3.98
__ Purdue - 410 Yellow (105 Days)	1.79	2.98	3.98

PUMPKINS

	per 1/8 oz.	per 1/4 oz.
__ Big Max (110 Days)	—	1.98
__ Connecticut Field or Big Tom (120 Days)	1.49	1.98
__ Dill's Atlantic Giant (125 Days).....	6 seeds	2.98
__ Howden Hybrid (110 Days)	—	2.98
__ Jack-B-Little (miniaure size 95 Days)	2.98	—
__ Jack 'O Lantern (110 Days)	1.49	1.98
__ Lumina White (90 Days) (6 seeds)	2.98	
__ Small Sugar Pie (90 Days)	1.49	1.98
__ Striped Cushaw (Green & White) (110 Days)	1.49	

SQUASH, SUMMER VARIETIES

	per 1/8 oz.	per 1/4 oz.
__ Black Zucchini (44 Days)	1.49	1.98
__ Early White Scallop (53 Days) Bush	1.49	—
__ Golden Summer Crookneck (55 Days)	1.49	1.98
__ Prolific Straight Neck (55 Days)	1.49	1.98
__ Dark Green Zucchini (45 Days).....	1.49	1.98

SQUASH, WINTER VARIETIES

	per 1/8 oz.	per 1/4 oz.
__ Butternut Waltham (88 Days)	1.49	1.98
__ Table Queen or Acorn (Bush) (80 Days).....	1.49	1.98
__ Vegetable Spaghetti Squash (100 Days)	1.49	1.98

SUNFLOWER SEED

	per 1 oz.	per 2 oz.	per 1/4 lb.
__ Russian Mammoth	2.49	3.98	5.98

WATERMELON

	per 1/8 oz.	per 1/4 oz.
__ Allsweet (90 Days).....	1.98	
__ Charleston Gray (85 Days).....	1.49	1.98
__ Crimson Sweet (80 Days).....	1.49	1.98
__ Florida Giant (90 Days)	1.49	1.98
__ Sugar Baby (75 Days).....	1.49	1.98



BULK SEED IN JARS

BEETS

	1 Tbls
__ Detroit Dark Red (60 Days)	1.25
__ Cylindra (60 Days)	1.25
__ Early Wonder (60 Days)	1.25
__ Lutz Deep Purple (80 Days)	1.25

BROCCOLI

	1/4 tsp
__ Calabrese (80 Days)	1.25

BRUSSELS SPROUTS

	1/4 tsp
__ Long Island Imp. (100 Days)	1.25

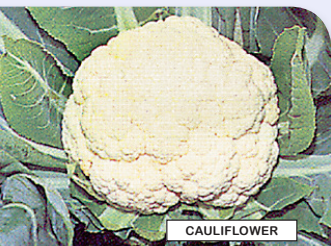
CABBAGE

	1/4 tsp
__ Chinese (Michihli) Plant in July (75 Days)	1.25
__ Early Flat Dutch (70 Days)	1.25
__ Late Flat Dutch (105 Days)	1.25
__ Early Jersey Wakefield (62 Days)	1.25
__ Golden Acre Resistant (63 Days)	1.25
__ Red Acre (76 days)	1.25
__ Wisconsin All Seasons (90 Days)	1.25

CARROTS

1 Pkg Sows 75 ft Row

__ Chantenay (Short) (75 Days)	1.25	1 Tbls
__ Danvers Half Long (75 Days)	1.25	1 Tbls
__ Little Fingers (65 Days)	1.25	1 Tbls
__ Nantes (coreless) (65 Days) ..	1.25	1 Tbls
__ Tender Sweet (coreless, 70 Days)	1.25	1 Tbls



CAULIFLOWER

CAULIFLOWER

	1/4 tsp
__ Snowball (60 days)	1.25

COLLARDS

	1 Tbls
__ Georgia (75 days)	1.25

MIXED GREENS

	1 Tbls
__ Collards, curled mustard, mustard spinach,	2.98
seven top turnip, swiss chard, old fashion mustard	

MUSTARD

	1 Tbls
__ Southern Giant Curled (50 days)	1.25
__ Florida Broad Leaf (45 days)	1.25
__ Old Fashion Mustard, Spinach (42 days)	1.25
__ Tendergreen (35 days)	1.25

KALE

	1 Tbls
__ Siberian Curled (60 days)	1.25

KOHLRABI

	1 Tbls
__ Early White Vienna (55 days)	1.25

LETTUCE, LEAF

One Pkg Sows 150 ft row

	1 Tbls
__ Bibb (65 days)	1.25
__ Black Seeded Simpson (40 days)	1.25
__ Grand Rapid (43 days)	1.25
__ Green Ice (40 days)	1.98
__ Mesclun Salad Mix (35-45 days)	2.98
__ Oak Leaf (40 days)	2.98
__ Romaine (70 days)	1.25
__ Salad Bowl (48 days)	1.25

LETTUCE, HEAD

	1 Tbls
__ Butter Crunch (loose heading) (65 days) ..	1.25
__ Great Lakes (65 days)	2.98

OKRA

	1 Tbls
__ Clemson Spineless (56 days)	1.25
__ Dwarf Long Pod Green (50 days)	1.25
__ Burgundy (55 days)	1.25
__ Perkins Long Pod (55 days)	1.25

PEPPERS

	1/4 tsp
__ California Wonder (75 days)	1.25
__ Hungarian Wax (60 days)	1.25
__ Sweet Banana (67 days)	1.25
__ Jalapeno (65 days)	1.25
__ Pimento (75 days)	1.25

RADISHES

	1 Tbls
__ Champion Red (mild) (27 days)	1.25
__ Cherry Belle Red Early (22 days)	1.25
__ China Rose Winter (55 days)	1.25
__ Crimson Giant Red (30 days)	1.25
__ Easter Egg Mix Radish (22 to 30 days) ..	1.25
__ French Breakfast (Rose-White Tip) (23 days) ..	1.25
__ Sparkler (28 days) (Red & White Tip)	1.25
__ White Icicle (27 days)	1.25

TURNIPS

	1 Tbls
__ Purple Top White Globe (55 days)	1.25
__ Seven Top for Greens Only (50 days)	1.25

ONION SETS, SWEET MARKET PRICES

__ Red	__ Yellow Stuttgarter, Sweet, from Holland
__ White	

ONION PLANTS, SWEET MARKET PRICES

__ Candy (Very Sweet)	
__ Walla Walla (Very Mild)	
__ Red Candy (Hamburger Type)	
__ Vidalia	__ Texas 1015

PARSNIP

	1 Tbls
__ Hollow Crown (105 days)	1.25

RUTABAGA

__ American Purple Top (90 days)	1.25
--	------

SALSIFY

	1 Tbls
__ Mammoth Island (73 days)	1.25

SPINACH

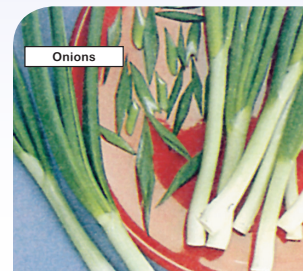
	1 Tbls
__ Bloomsdale, Long Standing (42 days)	1.25
__ New Zealand (60 days)	1.25

SWISS CHARD

	1 Tbls
__ Lucullus (60 days)	1.25
__ Swiss Chard Red (59 days)	1.25
__ Northern Lights Mix (60 days)	1.25

TOMATOES

	1/4 tsp
__ Beefsteak (73 days)	1.25
__ Rutgers (73 days)	1.25



Onions

GARDEN CONTEST

For largest vegetables grown in 2026 season, a prize of a \$15.00 gift certificate will be awarded for each of the following:

- | | | |
|---------------------|------------------|----------------------|
| Largest Beet | Largest Cucumber | Largest Squash |
| Largest Broccoli | Largest Onion | Largest Sweet Potato |
| Largest Cabbage | Largest Pepper | Largest Tomato |
| Largest Cantaloupe | Largest Potato | Largest Turnip |
| Largest Carrot | Largest Pumpkin | Largest Watermelon |
| Largest Cauliflower | Largest Radish | Largest Gourd |



Beet 7.79lbs
ROBERT CANTONWINE

Enter your biggest veggie into our Garden Contest!

RULES: Size determined by weight only.
(Only regular varieties may be used.)
Your name will be published
in our catalog next season.



Broccoli 2.47lbs.
PAISLEE CARPENTER



Cabbage 29.70lb
PAISLEE CARPENTER

LIST OF 2025 GARDEN CONTEST WINNERS

- **Largest Beet – 7.79 lb.**
Robert Cantonwine, Greencastle, IN
- **Largest Broccoli – 2.47 lb.**
Paislee Carpenter, Greencastle, IN
- **Largest Cabbage – 29.7 lb.**
Paislee Carpenter, Greencastle, IN
- **Largest Cantaloupe – 7.84 lb.**
Dale Cantonwine, Greencastle, IN
- **Largest Carrot – 1.72 lb.**
Frank Doub, North Salem, IN
- **Largest Cucumber – 5.33 lb**
Iris Clark, Clayton, IN
- **Largest Onion – 1.82 lb.**
Howard Shrader, Cloverdale, IN
- **Largest Pepper – 0.70 lb.**
Robert Cantonwine, Greencastle, IN
- **Largest Potato – 0.65 lb.**
Dale Cantonwine, Greencastle, IN
- **Largest Radish – 2.65 lb.**
Maebrie Cantonwine, Greencastle, IN
- **Largest Squash – 57.7 lb.**
Nick Ferran, Cloverdale, IN
- **Largest Sweet Potato – 7.73 lb.**
Jay Scamihorn, Plainfield, IN
- **Largest Tomato – 2.07 lb.**
Becky Nowlin, Indianapolis, IN
- **Largest Turnip – 6.14 lb.**
Jay Scamihorn, Plainfield, IN
- **Largest Watermelon – 59.63 lb.**
Kevin Arnold, Clayton, IN
- **Largest Zucchini – 7.37 lb.**
Vickie Whicker, Spencer, IN



Cucumber 5.33lbs
IRIS CLARK



Cantaloupe 7.84lbs.
DALE CANTONWINE



Carrot 1.72lbs.
FRANK DOUB



Pepper .70lbs
ROBERT CANTONWINE



Onion 1.82lbs.
HOWARD SHRADER



Radish 2.65lbs.
MAEBRIE CANTONWINE



Sweet Potato 7.73lbs.
JAY SCAMIHORN



Potato .65lbs.
DALE CANTONWINE



Tomato 2.07lbs.
BECKY NOWLIN



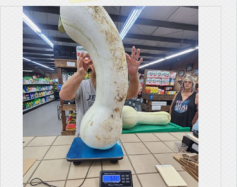
Turnip 6.14lbs
JAY SCAMIHORN



Watermelon 59.63lbs.
KEVIN ARNOLD



Zucchini 7.37lbs
VICKIE WHICKER



Squash 57.70lbs
NICK FERRAN

Save up to **\$1,200***

Offer valid through May 31, 2026

during Country Clipper Sale Days!

ContourDTS (Deck Tracking System)

Think of this as the shock absorber of the mower. The pivoting front axle contours to your lawn and uneven terrain ensuring your cut stays consistent, even when the landscape isn't. An independently suspended deck works with the pivoting front axle to let your mower glide smoothly over the landscape.



Steering Options: Joystick or Twin-Lever

An operator decides how they want to drive. We provide options, the choice between joystick control and traditional twin-lever steering system. Our innovative joystick control makes operation easy and intuitive; just point and go. Our twin-lever steering system delivers precise, zero-turn handling that keeps you moving smoothly across all types of terrain.

Maintenance Friendly Stand-Up Deck

This standard feature allows you access to blades quickly and effortlessly. We know mowing can be messy and maintenance shouldn't slow you down. The stand-up deck design saves time and effort, giving you more freedom to focus on what matters most.



We have your portable power!...



PB-2520 Regular Price \$199.99
Will be On Sale From March 1st to June 30th
for **\$169.99**

ECHO's highest-performing handheld blower.
• 25.4 cc professional-grade, 2-stroke engine
• 453 CFM and 170 MPH
• 15.8 N



PB-5810T \$499.99

Highest performance
in its class.
• 59.7 cc professional
grade, 2-stroke engine
• 700 CFM and 200 MPH
• 27 N

\$499.99



TC-210

Tremendous performance from
a compact package.
• Four 9 in. diameter, 10-tooth
reversible, hardened steel blades
• 42:1 reduction worm gear-type
transmission
• Waterproof stop switch and throttle
control located at operators fingertips

\$299.99



CS-3510

Professional features and lightweight.
• 30.5 cc professional-grade,
2-stroke engine
• 16" bar

\$479.99



CS-590

TIMBER WOLF 24" \$489.99

The new standard for tough.
• 59.8 cc professional-grade,
2-stroke engine
• 18", 20" and 24" bar lengths

SMR-225 \$279.99*

Fuel efficient,
entry-level trimmer
• 21.2 cc
professional-grade,
2-stroke engine
• 59" straight shaft
• Speed-Feed®
400 head

* Will be on sale from
March 1st to April 30th **\$249.99**

GT-225SF \$219.99*

Lightweight curved shaft
with Speed Feed® head.

• 21.2 cc
professional-grade,
2-stroke engine
• 48" curved shaft
• Speed-Feed®
400 head

* Will be on
sale from
March 1st to
April 30th **\$249.99**

SRM-2120-2A \$229.99*

21.2cc

* Will be on sale from
March 1st to April 30th **\$199.99**

**21" Self-Propelled 3 in 1
The ECHO LM-2119SP
Self-Propelled Mower**

Designed for up to an acre, features a 190cc Briggs & Stratton®
engine, variable-speed self-propelled system, and Mow N' Stow
for easy storage. It offers a 3-in-1 cutting system, dual blades
and adjustable mowing height for excellent performance
on various terrains. Engine: 190cc Briggs & Stratton
Starting System: ReadyStart®

Cutting Height:
Adjustable from 1.25 to 4.0 inch

Warranty:
5 year consumer
90 day commercial

Deck:
21 inch
heavy-duty
steel

Regular Price \$599.99

\$549.99*

*Spring National Sales Event - March 1st - May 31st



and the service when you need it!



**MOWER
DEPARTMENT
SERVICE DESK**



AND SHOP

COURIER XT ZERO TURN

THE NEXT GENERATION OF PREMIUM MOWING

Simplicity's newest zero turn, the Courier XT, gives you a bigger
deck option and a commercial engine so you can manure your
lawn in less time. The luxury touches that Simplicity is famous for
make mowing with the Courier XT so enjoyable that you may want

Simplicity

52" Fab Deck
\$6,899



Models

52 in. Deck
25 gross hp | 724cc
Briggs & Stratton
Commercial Series V-Twin
with Cyclonic Technology
\$6,899

61 in. Deck
25 gross hp | 724cc
Briggs & Stratton
Commercial Series V-Twin
with Cyclonic Technology
\$7,699

**\$500
REBATE ON
BOTH MODELS**

FRUIT TREE CENTER

NURSERY STOCK

Our shipments will arrive in March and April, in time for spring planting. We are listing only part of the varieties we will have. We can't quote any prices until we receive it, but our prices will be very reasonable.

Shop early for the best selection of varieties, as some will go faster than others.

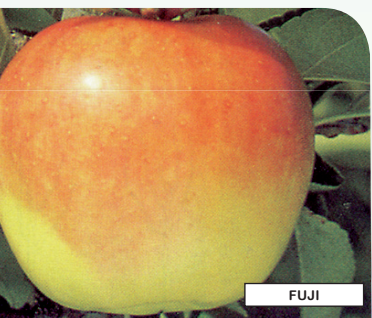
Our trees will be potted in 6 to 7 gal. pots, older and larger than catalog trees.



JOHNATHON



GRANNY SMITH



FUJI

APPLE

All of our Semi-Dwarf Apple trees have 3 year roots, 2 year trunks and one year tops. Occasionally the growth of the 1 year top will vary. In all cases Dwarf Apple trees will have a $\frac{7}{16}$ " or larger caliper.

- ARKANSAS (Semi-Dwarf)
- BRAEBURN (Semi-Dwarf)
- COMBO (Semi-Dwarf)
- COMBO (Espaliered)
- CORTLAND (Semi-Dwarf)
- EMPIRE (Semi-Dwarf)
- FIRESIDE (Semi-Dwarf)
- FUJI RED (Semi-Dwarf)
- GALA (Semi-Dwarf)
- GRANNY SMITH (Semi-Dwarf)
- HONEY CRISP (Semi-Dwarf)
- HONEY GOLD (Semi-Dwarf)
- JONAGOLD (Semi-Dwarf)
- JONATHAN (Semi Dwarf)
- LIBERTY (Semi-Dwarf)
- LODI (Semi Dwarf)
- PINK LADY (Semi Dwarf)
- MUTSU (Semi Dwarf)
- McINTOSH (Semi Dwarf)
- RED DELICIOUS (Semi-Dwarf)
- RED SKY (Semi-Dwarf)
- STATE FAIR (Semi-Dwarf)
- SWEET 16 (Semi-Dwarf)
- WINESAP (Semi-Dwarf)
- YELLOW DELICIOUS (Semi-Dwarf)
- YELLOW TRANSPARENT (Semi-Dwarf)



CHERRIES



PEACHES



DELICIOUS PEAR



FOR EARLIER,
BETTER YIELDS.

SUPERthrive 50 IN ONE
VITAMINS-HORMONES

CHERRY-SOUR
NORTH STAR
MONTMORENCY

CHERRY-SWEET
BING
BLACK TARTARION
CHERRY COMBO
STELLA
VAN

CHESTNUT
AMERICAN
CHINESE

FIG
CHICAGO HARDY

KIWI
FEMALE
MALE
PROLIFIC HARDY

NECTARINE
FANTASIA
FLAVORTOP

PAW PAW

PEACH
ELBERTA (Semi-Dwarf)
RED HAVEN (Semi-Dwarf)
RED RELIANCE

PEAR
ANJOU
BARLETT (Semi-Dwarf)
KIEFFER (Semi-Dwarf)
SUMMER CRISP

PECAN

PERSIMMONS
COMMON
GRAFTED

PLUM
2-N-1
BURBANK (Semi-Dwarf)
METHLEY (Semi-Dwarf)
SANTA ROSE
STANLEY
TOKA (Semi-Dwarf)

PLUM-COT
SPRING SATIN

ALL SEASON SALE!
LOW, LOW SALE PRICES ON OUR ENTIRE STOCK OF
NURSERY TREES

Check Our Sale Prices With Regular Prices
(NOTE - TREES GUARANTEED AT REG. PRICE ONLY)

OUR GUARANTEE POLICY

Evergreens, Shrubs and Trees are guaranteed at 100% of regular purchase price for the first year only. All planting charges are extra. In case of failure — we must be notified within 1 year from date of sale. No replacements or adjustments will be made without the return of the customer's copy of the sales slip. Replacement will be made only once under the guarantee policy. Guarantee does not apply to sale prices.

COX'S PLANT FARM Lawn & Garden Center

6360 S. Road "0", Clayton, Indiana 46118
Phone: 317-539-4632

A GROWER'S TIP

For the effort you will put in, you will want your trees to grow, therefore water with approximately one (1) bucket per week for the first year, unless there is plenty of rain.

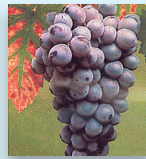
We reserve the right to inspect defective trees.



Red Canadice



White Himrod



Concord

STRAWBERRIES (25 per bundle)

See ad on page 17

- __Cabot
- __Earliglow
- __Flavorfest
- __Honeoye
- __Jewel



25 for \$13.98
 50 for \$24.98
 100 for \$45.98

- __Seascape (EVERBEARING)



BERRIES Blackberries:

- __Baby Cakes
- __Chester
- __Navaho
- __Taste of Heaven
- __Triple Crown

Blueberries:

- __Blue Crop
- __Darrow
- __Duke
- __Elliott
- __Northland
- __Patriot
- __Pink Lemonade
- __Spartan



Raspberries:

- __Bristol Black
- __Heritage-fall
- __Fall Gold
- __Latham
- __Logan
- __Jewel Black

Gooseberries:

- __Pixwell

VINES

- __Amethyst Falls-Wisteria
- __Bittersweet American
- __Boston ivy
- __Dropmore Scarlet
- __Gold Flame
- __Honeysuckle
- __Porcelain variegated
- __Silver bells, chocolate
- __Silver lace
- __Virginia creeper

GRAPES

- __Catawba-red seeded
- __Cayuga-white
- __Concord-purple seedless
- __Edelweiss-white
- __Fredonia-black seedless
- __Frontenac-blue-black
- __Himrod-white-seedless
- __Niagara-white
- __Reliance red-seedless

Varieties of Nursery Stock



- __ Almond, Pink Flowering
- __ Arborvitae - several varieties
- __ Austrian Pine
- __ Azaleas - several varieties
- __ Birch - several varieties
- __ Boston Ivy
- __ Boxwood - several varieties
- __ Burning Bush
- __ Butterfly Bush
- __ Cherry- Pink Weeping
- __ Cherry- Kwanzan
- __ Cherry- Snow Fountain
- __ Cotoneaster - several varieties
- __ Crabapple - several varieties
- __ Cyprus
- __ Dawn Redwood
- __ Dogwood Shurbs
- __ Dogwood Trees
- __ Dwarf Sweetspire
- __ Elderberry
- __ False Cypress
- __ Forsythia - several varieties
- __ Ginkgo
- __ Golden Vicary Privet
- __ Hawthorn - several varieties
- __ Heath - several varieties
- __ Hemlock, Canadian
- __ Hibiscus
- __ Holly - several varieties
- __ Honey Locust
- __ Hydrangea - several varieties
- __ Japanese Maple - several varieties
- __ Juniper - several varieties
- __ Lilac - several varieties
- __ Magnolia - several varieties
- __ Maple - several varieties
- __ Mock Orange
- __ Newport Plum
- __ Ninebark
- __ Oak
- __ Pieris
- __ Pine, Austrian
- __ Pine, Dwarf White
- __ Pine, Mugo
- __ Pine, White
- __ Potentilla
- __ Privet
- __ Redbud - several varieties
- __ Rhododendron - several varieties
- __ Rose of Sharon - several varieties
- __ Sandcherry, Purpleleaf
- __ Serviceberries - several varieties
- __ Shrub Roses - several varieties
- __ Smoke Tree
- __ Spirea - several varieties
- __ Spruce, Bakeri Dwarf
- __ Spruce, Black Hills
- __ Spruce, Colorado Blue
- __ Spruce, Dwarf Alberta
- __ Spruce, Globe Blue Dwarf
- __ Spruce, Norway
- __ Spruce, Pumila
- __ Sumac
- __ Sweet Gum
- __ Sweetspire
- __ Sycamore
- __ Tulip Tree
- __ Viburnum - several varieties
- __ Weeping Willow
- __ Weigela - several varieties
- __ Willow - several varieties
- __ Yew - several varieties
- __ Yucca

Several More Varieties

Hibiscus Pollypetite®

Hibiscus Blue Chiffon®

Rosa Ringo® (Shrub Rose)

Hydrangea
Invincibelle Sublime™



We carry a large variety
of nursery stock
(Too many to mention here.)

BULK GRASS SEED

• SPECIAL EXTRA HARDY TURF GRASS MIXTURE

Good for sunny and up to 60% shade areas, extra tough drought resistance. Has the best disease resistance of latest varieties available. Grass will be dark green and all fine leaf with vigorous rhizome grass to keep it thick for years. Will germinate fast with proper moisture. A very good blend for every type of lawn, sports fields, parks, playgrounds and other areas that require a durable turf. Seeding Rate – 4 lbs. per 1000 sq. ft.

1 to 10 lbs. 10 to 50 lbs. 50 lb. Bag

Call for current pricing

• SHADY LAWN MIX

Works well on lawns shaded over 50% to 65% of the time. Seeding Rate – 5 lbs. per 1000 sq. ft.

1 to 10 lbs. 10 to 50 lbs. 50 lb. Bag

Call for current pricing

• JAGUAR 4, TURF-TYPE TALL FESCUE

Brown patch and drought resistant. Full sun to partial shade. Seeding Rate – 6 to 10 lbs. per 1000 sq. ft.

1 to 10 lbs. 10 to 50 lbs. 50 lb. Bag

Call for current pricing

• COX'S ECONOMY MIX

For Sun or up to 60% shade. All fine blade grasses, good for a low cost permanent lawn. Seeding Rate – 5 lbs. per 1000 sq. ft. (4# okay but 5# better)

1 to 10 lbs. 10 to 50 lbs. 50 lb. Bag

Call for current pricing

• SUNNY LAWN MIX

Seeding Rate – 4 lbs. per 1000 sq. ft.

1 to 10 lbs. 10 to 50 lbs. 50 lb. Bag

Call for current pricing

• ANNUAL RYE

Seeding Rate – 7 to 9 lbs. per 1000 sq. ft. Good Starter Grass (Not a permanent grass)

1 to 10 lbs. 10 to 50 lbs. 50 lb. Bag

Call for current pricing

• KENTUCKY BLUE GRASS, PREMIUM GRADE

Seeding Rate – 3 lbs. per 1000 sq. ft.

1 to 10 lbs. 10 to 50 lbs. 50 lb. Bag

Call for current pricing.

• CREEPING RED FESCUE

For shady, dry areas and poor soil. Permanent, mixes well with Blue Grass. Seeding Rate – 5 lbs. per 1000 sq. ft.

1 to 10 lbs. 10 to 50 lbs. 50 lb. Bag

Call for current pricing.

• KENTUCKY 31 FESCUE

Not desirable for well-groomed lawns but excellent for waterways or low, wet grounds. Seeding Rate – 7 to 10 lbs. per 1000 sq. ft.

1 to 10 lbs. 10 to 50 lbs. 50 lb. Bag

Call for current pricing

• ORCHARD GRASS

For pasture or blend with clover and fescue or Timothy. Seeding Rate – 15 lbs. per acre

1 to 10 lbs. 10 to 50 lbs. 50 lb. Bag

Call for current pricing

• PASTURE BALER MIX

Alfalfa, Timothy, Red Clover. Seeding Rate – 15 lbs. per acre.

1 to 10 lbs. 10 to 50 lbs. 50 lb. Bag

Call for current pricing.

• RED CLOVER

Mix with orchard grass or fescue for pasture. Seeding Rate – 15 lbs. per acre.

1 to 10 lbs. 10 to 50 lbs. 50 lb. Bag

Call for current pricing

• RYE (FOR WINTER COVER)

Plow down in the Spring. Seeding Rate – 3 Bushel per acre.

1 to 10 lbs. Bushel Bag

Call for current pricing

• BUCKWHEAT

1 to 10 lbs. 50 lb. Bag

Call for current pricing

• WINTER HARDY

PRE-INOCULATED ALFALFA *Call for current pricing*

WHITE DUTCH CLOVER

Grows very short for lawns *Call for current pricing*

• SWEET YELLOW CLOVER

1 to 10 lbs. 10 to 50 lbs. 50 lb. Bag

Call for current pricing

For Best Results — Mix Rye Grass with Blue Grass because it germinates within 10 days – Blue germinates in about 30 days!

FALL GARDEN PLANTS

Take full advantage of your garden space – plant in July and raise another crop this fall!

These plants also do well in the Fall:

Radishes, Turnips, Turnip Greens, Beets, Kale, Spinach, Mustard Greens and Onion sets (if available)

Fall Seeds Available All Season



Green Magic Broccoli



Quick Start Cabbage



Snowball Cauliflower

2026 — Happy Gardening — 2026

MARCH: - 18th, 21st, 22nd, 25th, 26th: **Best days for planting above ground crops.**

2nd, 30th, 31st: **Good days for planting above ground crops.**

7th, 8th, 17th: **Best days for planting below ground crops.**

3rd, 4th, 12th, 13th: **Good days for planting below ground crops.**

1st, 5th, 6th, 9th, 10th, 11th, 14th, 15th, 16th, 19th, 20th, 23rd, 24th, 27th, 28th, 29th: **Bad days for planting.**

APRIL: - 17th, 18th, 22nd, 23rd: **Best days for planting above ground crops.**

26th, 27th: **Good days for planting above ground crops.**

3rd, 4th, 5th, 13th, 14th: **Best days for planting below ground crops.**

8th, 9th, 10th: **Good days for planting below ground crops.**

1st, 2nd, 6th, 7th, 11th, 12th, 15th, 16th, 19th, 20th, 21st, 24th, 25th, 28th, 29th, 30th: **Bad days for planting.**

MAY: - 1st, 16th, 19th, 20th, 28th, 29th,: **Best days for planting above ground crops.**

23rd, 24th: **Good days for planting above ground crops.**

2nd, 11th, 12th, 15th: **Best days for planting below ground crops.**

6th, 7th: **Good days for planting below ground crops.**

3rd, 4th, 5th, 8th, 9th, 10th, 13th, 14th, 17th, 18th, 21st, 22nd, 25th, 26th, 27th, 30th, 31st: **Bad days for planting.**

JUNE: - 15th, 16th, 24th, 25th, 26th: **Best days for planting above ground crops.**

19th, 20th, 21st, 29th: **Good days for planting above ground crops.**

7th, 8th, 11th, 12th: **Best days for planting below ground crops.**

2nd, 3rd: **Good days for planting below ground crops.**

1st, 4th, 5th, 6th, 9th, 10th, 13th, 14th, 17th, 18th, 22nd, 23rd, 27th, 28th: **Bad days for planting.**

JULY: - 14th, 21st, 22nd, 23rd: **Best days for planting above ground crops.**

17th, 18th, 26th, 27th, 28th: **Good days for planting above ground crops.**

4th, 5th, 9th, 10th, 13th, 31st: **Best days for planting below ground crops.**

1st: **Good days for planting below ground crops.**

2nd, 3rd, 6th, 7th, 8th, 11th, 12th, 15th, 16th, 19th, 20th, 24th, 25th, 29th, 30th: **Bad days for planting.**

AUGUST: - 18th, 19th, 28th: **Best days for planting above ground crops.**

13th, 14th, 23rd, 24th: **Good days for planting above ground crops.**

1st, 2nd, 5th, 6th, 9th, 10th, 29th: **Best days for planting below ground crops.**

3rd, 4th, 7th, 8th, 11th, 12th, 15th, 16th, 17th, 20th, 21st, 25th, 26th, 27th, 30th, 31st: **Bad days for planting.** Maybe it's time to take a vacation!

Now just enjoy your summer and enjoy the harvest from all your hard work!! :) Don't forget about our largest veggie contest!!

ROOT (BELOW GROUND) CROPS: POTATOES, BEETS, CARROTS, RADISH'S, TURNIP, SWEET POTATOES, ONIONS, RUTABAGA, PARSNIPS, AND PEANUTS ECT.

ABOVE CROPS: GREEN BEANS, CORN, PEAS, LIMA BEANS, LETTUCE, KALE, SPINACH, PUMPKINS, SQUASH, CUCUMBERS, CANTALOUPE, WATERMELON, OKRA, KOHL RABI, MUSTARD, PARSLEY, HERBS, GOURDS, ECT.

Fishing Calendar for 2026

MARCH

Best fishing: 1st thru 3th & 18th thru 31st
Fair fishing: 4th thru 17th

APRIL

Best fishing: 1st & 17th thru 30th
Fair fishing: 2nd thru 16th

MAY

Best fishing: 1st & 16th thru 31st
Fair fishing: 2nd thru 15th

JUNE

Best fishing: 14th thru 29th
Fair fishing: 1st thru 13th & 30th

JULY

Best fishing: 14th thru 29th
Fair fishing: 1st thru 13th & 30th thru 31st



AUGUST

Best fishing: 12th thru 28th
Fair fishing: 1st thru 11th & 29th thru 31

SEPTEMBER

Best fishing: 10th thru 26th
Fair fishing: 1st thru 9th & 27th thru 30th

OCTOBER

Best fishing: 10th thru 26th
Fair fishing: 1st thru 9th & 27th thru 31st

NOVEMBER

Best fishing: 9th thru 24th
Fair fishing: 1st thru 8th & 25th thru 30th

DECEMBER

Best fishing: 8th thru 23rd
Fair fishing: 1st thru 7th & 24th thru 31st

NOTE: Most of us go fishing when we get a day off, not because it is the best time! Any day spent fishing is a great day!

PROBLEM: NEED A GREEN THUMB?

We want our customer to get the best results possible from their flowers, perennials, vegetables, foliage plants and tree & shrubs.

Answer: FOR A VERY SMALL EXPENSE, YOU CAN GET SUPER RESULTS FROM YOUR PLANTS BY GIVING THEM SUPERthrive ALONG WITH A GOOD FERTILIZER PROGRAM.

For Plants: Simply mix one teaspoon per 1 gallon water, (**For Trees:** Use one teaspoon per gallon water) to start out with. After getting plants started use 1/2 teaspoon per gallon when watering through the season. For better lawns, add SUPERthrive when feeding and watering.

Be nice to them and they will give you larger flowers, larger vegetables, more and vigorous growth than you have ever had before. Look in our greenhouses and see the healthy results we get by using SUPERthrive on everything.

Thank you to our plant-loving customers!

COX'S Plant Farm

SIZE	Call for Pricing	SIZE	Call for Pricing
4 oz.	1 qt.
1 pt.	1 Gal.

READ THESE AMAZING TESTIMONIALS FROM GROWERS JUST LIKE US.

"Grows faster and healthier - for flowering - excellent"
by Florist Products, Des Plaines, IL

"Resulted in miracles. Many problems corrected by use, with fertilizer program"
by Ken Dyo, convention chairman, 6,000 member
California Professional Gardeners Assn.

"The only stuff that brings 'dead' plants back to life."
by Bamico Gardens, Pasadena, CA

"Any grower would benefit from plant growth and vitality results"
by Dan B. Gardiner, past President,
National Landscape Nurserymen's Assn., Louisville, KY

"SUPERthrive starts all fruit, flowering and ornamental plants vegetating uniformly soon after planting. New white roots, and growth above ground, earlier and heavier bearing. Helps bulbs to vegetate best - greatly improves roots, blooming."
by Brentwood Berry Gardens

"SUPERthrive raised survivals on difficult transplantings from 3% to 100%"
by California (state) Polytechnic College

"Excellent- gives life to plants and trees that appear to be dead."
by George C. Roeding Jr., Past President,
California Assn. Of Nurserymen, California Nursery Co., Niles, CA

"15 million plants annually all transplanted successfully, sometimes a third lost without SUPERthrive."
by American Fruit Growers

"I wouldn't plant anything without SUPERthrive."
by W. Atlee Burpee III, Burpee Seed Co.

"I could not have put in Disneyland that summer without it. There is no equivalent to SUPERthrive."
by Jack Evans
California State Landscape Architects Commissioner



#1 PLANT HEALTH EXTRA LIFE
Greatest Guarantee-Offer PROOF Ever
60 YEARS, unchallenged, \$5,000. GUARANTEED to be
World CHAMPION
#1 Activator, #1 Trans/PLANTER, #1 Extra GROWER,
#1 REVIVER, #1 Perfecter
WORLD'S FAIR SCIENCE-MEDAL-WINNING

EXTRA LIFE for YOUR:

- INDOOR PLANTS** To See MORE NEW FLOWERS and LEAVES, HEALTHIER, STRONGER - MORE BEAUTIFUL
- OUTDOOR PLANTS** And **BARE ROOTS** TO START NEW ROOT AND FOLIAGE ACTION, SHOOTING DOWN, UP and filling-in, sideways
- FLOWERING** And TO GET MORE FLOWERS, LONGER and MORE BEAUTIFUL
- SEEDLINGS** TO PLANT THEM ALL SAFELY, UNIFORMLY - and GROWING MORE STRONGLY
- TREES** TO GET "TWO YEARS' GROWTH IN ONE"?? **FRUITING** For EARLIER, HEAVIER, BEARING?
- BULBS** TO START THEM VIGOROUSLY, Beating Soil-rot, Hastening Better BLOOMING
- SEEDS** To Help GERMINATION Percentage and SPEED EARLIER, BETTER YIELDS, including Vegetables
- LAWNS** To Make QUICKER, deeper, TOUGHER TURF from SEED, SOD, Stolons, Sprigs, HYDRO-seeding

11 X-MAS TREES	17 HYDROSEEDING	22 FLOWERING PLANT
12 REFORESTATION	18 LANDSCAPING	COMPETITIONS
13 HYDROPONICS	19 PROPAGATION	23 INTERIORSCAPING
14 FIELD CROPS	20 ANTI-EROSION	24 CUT FLOWERS
15 BONSAI	21 ENVIRONMENTAL	25 WEATHER DAMAGE
16 TISSUE CULTURE	IMPROVEMENT	26 WATER GARDENS

1800 SALVAGED OLD TREES: "NONE SICK OR DEAD"

SUPERthrive™ unique extra life: -
TRANSPLANTING. MAINTENANCE. SALVAGING.

"IMPOSSIBLES" MADE EASY.

1,800 60 to 75 year-old trees dug from the grounds of 20th Century Fox Studios, stock-piled in weather for 2 years, replanted along streets of Century City. Landscape architect and contractor reported "not one sick or dead tree at any time."

Only SUPERthrive™ could have done this -or even approached it.

CLIP THESE COUPONS AND SAVE!

If your purchase is \$15.00 or more you can use two coupons.
 With \$30.00 or more you can use all three coupons at one time!
 Only 1 set of coupons can be used at one time.

MISCELLANEOUS

CANADIAN SPHAGNUM 2.2 cu. ft. bag
 3.8 cu. ft. bag

FIELD FERTILIZER – 50 lb. bags – Use on garden and lawn.
 12–12–12 6–24–24 46–0–0 19 –19 -19

GARDEN WEEDEE – Weeds won't grow. Use in flowerbeds or gardens.
 Available in Preen.

PLANT & FLOWER FERTILIZER – It won't burn. Liquid or granular Multicoat.

INSECTICIDES & FUNGICIDES – We have a very good selection

HAND TOOLS FOR GARDEN – We have hoes, rakes, trowels. Large selection!

CLAY BIRD BATHS

SPRAYERS – Tank Type & Dusters

POTTING SOIL IN BAGS – Miracle-Gro and Garden Magic

TOP SOIL IN BAGS

MANURE IN BAGS

BAGS OF BARK

BAGS OF LANDSCAPING STONE – several kinds

TOMATO STAKES and ROUND WIRE CAGES

BAG LIME – 50 lb. Bags



Lawn and Garden
Soil Treatment

*For better results
use LIL' PERK,
it will loosen
the soil
so plants can
root-in better!*

**BULK A GRADE
 HARDWOOD BROWN MULCH**

1 Yard \$39⁹⁸

- TOP SOIL \$79⁹⁵ Yard
- BULK BLACK FIBER MULCH \$59⁹⁵ Yard

– WE WILL LOAD WITH TRACTOR –
 2 TRACTOR SCOOPS EQUAL 1 YARD PLUS.

PRICES SUBJECT TO CHANGE

Plants Are Clean Air Machines

Scientists have found that plants have very special capabilities – they can remove pollutants from the air in our homes and factories.

Some of the best houseplants for helping provide clean air are pothos, spider plants, peace lilies, and dracaenas. We have many varieties of houseplants to enhance your space at home or at work.

MUST PRESENT COUPON

FREE 4 PACK OF FLOWERS or VEGETABLE PLANTS
 YOU CHOOSE (\$2.49 Pack)
 WITH THIS COUPON AND
 \$15.00 OR MORE PURCHASE
 COUPON GOOD APRIL 1ST WHILE SUPPLIES LAST 2026

FREE 3" POT WAVE PETUNIA
 (\$2.98 Value)
 13 COLOR OR TYPES TO CHOOSE FROM.
 PURPLE WAVE WILL SPREAD 4FT. ACROSS.
 WITH THIS COUPON AND
 \$15.00 OR MORE PURCHASE
 COUPON GOOD APRIL 1ST WHILE SUPPLIES LAST 2026

FREE 5-YEAR NORWAY SPRUCE
 WITH THIS COUPON
 AND PURCHASE OF \$30.00 OR MORE
 LIMIT 1 TREE.
 COUPON GOOD APRIL 1ST WHILE SUPPLY LASTS 2026

**\$1.00 OFF Regular Price
 of Flowering Hanging Baskets**
 Baskets Priced \$23.⁹⁸ or more
 (NOT GOOD ON SALE PRICES.)
 Good for up to 5 Baskets 2026

FREE PRIZES!
 Fill in your name, address and phone number
 deposit this coupon in box at front of our store!
 1st Prize – \$50.00 Gift Certificate
 2nd Prize – \$25.00 Gift Certificate
 3rd Prize – Five \$15.00 Gift Certificates
 5 Winners
 4th Prize – Ten \$10.00 Gift Certificates
 10 Winners
 No purchase necessary – You need not be present to win. Winners will be notified – Coupon must be deposited in box by May 31st – Drawing June 1st.

PLEASE PRINT
 Name _____
 Address _____
 City, State, & Zip _____
 Phone _____ 2026

COX'S PLANT FARM

6360 SO. CO. RD. "0"

CLAYTON, IN 46118

Celebrating 56 Years Of Growing!



We have the largest Lawn & Garden Store in the state — over two acres of shopping area with three acres for parking — at U.S. 40 and Clayton Road.



Our business is blooming!

Printing & Design by Innovative Printing Services INC. 812-443-1007