



CHIEF[®]

INDUSTRIES



Trusted. Tested. True.[®]





CHIEF[®]

INDUSTRIES

For more than six decades, Chief Industries has been driven by — and has built our reputation upon — taking care of our customers and recognizing the vital role they play in our success. This commitment is expressed in our mission statement:

Our mission is to provide unparalleled personal attention to meeting the needs of our customers while treating all stakeholders with dignity and respect, thereby ensuring our strength and stability.

We also understand that diversifying our company into a variety of industries gives us greater balance and strength, no matter the headwinds we face. Our divisions and subsidiaries have made their mark in such diverse industries as:

- Grain and bulk feed storage, grain drying, and material handling
- Metal building systems
- Commercial construction and development
- Factory-built modular residential homes
- Custom steel fabrication
- Chief Pivot Walker
- Powder coating facilities
- Commercial and industrial electrical services
- Ethanol and high protein feed production
- Secondary containment systems
- Wastewater treatment systems
- Manufactured housing retail sales
- Shipping via common carrier

Most important of all are the loyal, dedicated and dependable people of Chief. We believe they deserve the opportunity to maximize their potential as they build their careers with us.

Taking care of our customers, our strength through diversification, and holding our employees in the highest regard are how Chief Industries will continue to be the company our partners and customers will trust for years to come.

Trusted. Tested. True.[®]





CHIEF[®] CONSTRUCTION

CHIEF CONSTRUCTION started as a one-man shop in 1954 and was the initial operation of Chief Industries' family of businesses. Today, Chief Construction is a design-build, construction management general contractor serving the commercial, industrial, healthcare, education, and institutional industries. With offices in Grand Island, Kearney, and Lincoln, Nebraska, they provide services across the state. The company offers complete turnkey construction services from in-house engineering and architectural design, to field operations supervision.



HEARTLAND ELECTRIC

This department of Chief Construction Company is located in Grand Island, Nebraska, and offers complete electrical services for industrial and commercial clients.

CHIEF DEVELOPMENT is a department of Chief Construction. As a premier real estate developer in the Midwest, it provides innovative and progressive developments through public and private partnerships. Its development portfolio includes projects for public, private and public/private institutions as well as for Chief Industries. Projects range from small properties to expansive developments.

CHIEF[®] DEVELOPMENT





CHIEF AGRI originated in 1961 and is now a leading worldwide manufacturer of commercial grain storage and grain management systems. It has production and/or sales locations in the United States, England, France, and South America, including two subsidiaries (Chief Industries U.K., LTD and Phenix-Rousies Industries), and one department (Chief Agri South America S.A.). Chief Agri is headquartered in Kearney, Nebraska.

CHIEF
AGRI





CHIEF
BUILDINGS

From its origins in 1966, **CHIEF BUILDINGS** has grown to become an industry leader in the design and manufacture of metal buildings for such varied uses as multi-story offices, churches, and schools. It also creates metal structures for retail, agricultural, and industrial use. Chief Buildings are sold by authorized builders throughout the United States, and are manufactured in Grand Island, Nebraska, and Rensselaer, Indiana.

ARROWHEAD STEEL FABRICATORS is a department of Chief Buildings. It is a regional fabricator of structural and miscellaneous steel infrastructure for construction projects.





BONNAVILLA became a division of Chief Industries in 1970, and crafts high-quality modular homes from a wide variety of floor plans. Known for comfort, style, and energy-efficiency, BonnaVilla homes can be customized to suit the individual tastes of each customer. Every home is built in an indoor manufacturing facility in Aurora, Nebraska, allowing construction to continue year-round regardless of weather conditions.

EAGLE CREST HOMES®

Since 1996, Eagle Crest Homes in Grand Island, Nebraska has been a retailer of factory-built homes. This division of Chief is also a contractor of single-family homes manufactured by BonnaVilla.





CHIEF
CARRIERS

A subsidiary of Chief Industries since 1973, **CHIEF CARRIERS, INC.** is an irregular-route common and contract motor carrier. Customers depend on Chief Carriers to transport goods to all 48 contiguous states and Canada. Chief Logistics, which has been in business since 1986, handles all shipment details including pickup, delivery, tracking, and scheduling.





CHIEF 
ETHANOL

Since 1990, **CHIEF ETHANOL FUELS, INC.** has produced high quality renewable fuel, distiller grains, and corn oil. Its two plants in Hastings and Lexington, Nebraska, each produce millions of gallons of ethanol per year.





CHIEF[®]

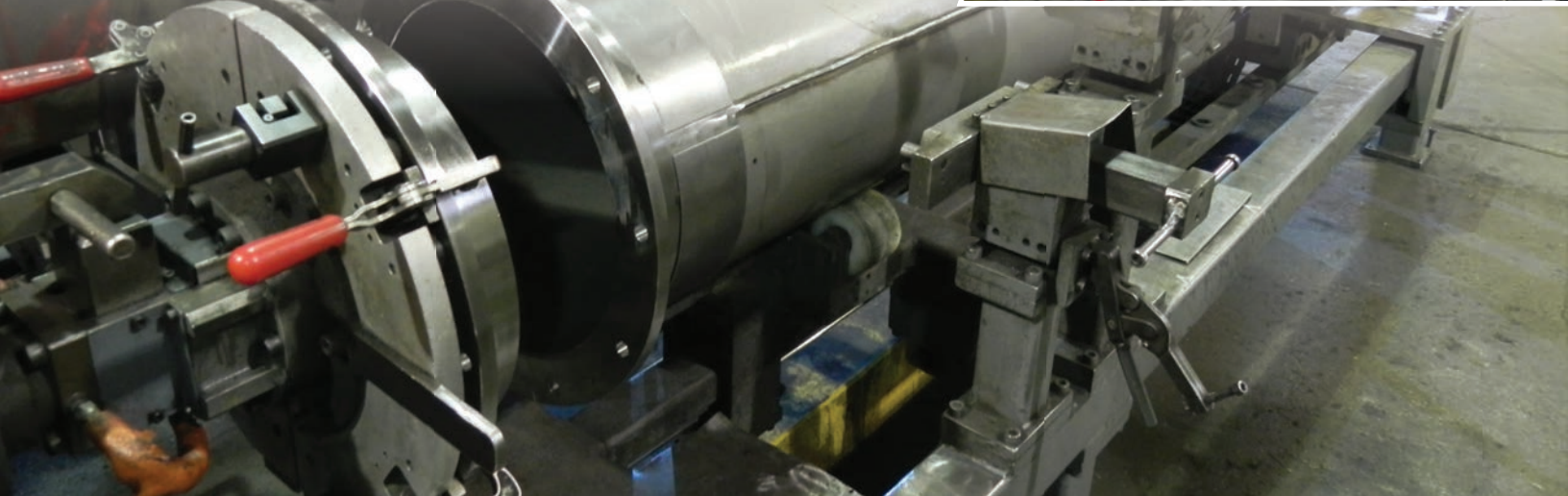
FABRICATION

Originating in 1991, **CHIEF FABRICATION** is now one of the largest custom steel fabrication operations between Chicago and Denver, serving numerous manufacturers throughout the Midwest including other Chief divisions. Stamping, welding, CNC punching, and CNC forming are among its many capabilities. Chief Fabrication also has one of the largest and most advanced powder coating facilities in the United States.



CHIEF PIVOT WALKER

Manufactured and marketed by Chief Fabrication, the Pivot Walker “walks” the pivot irrigation system through the field without creating ruts caused by conventional tires.





DIVISIONS

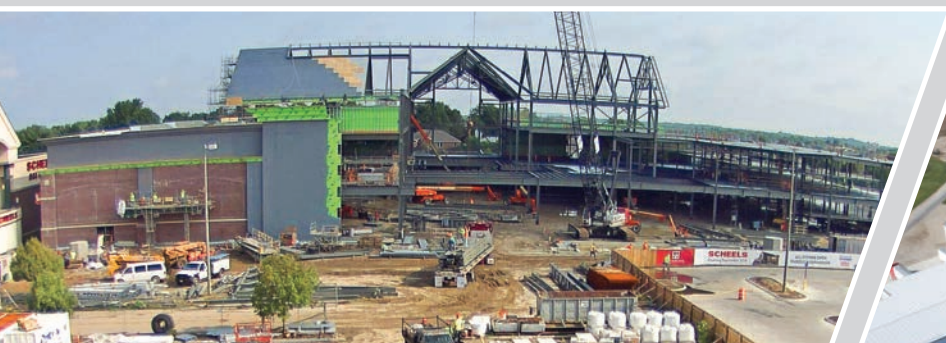
- » **CHIEF AGRI**
Kearney, NE
PH: 308-237-3186
agri.chiefind.com
- **CHIEF AGRI SOUTH AMERICA**
Montevideo, Uruguay
CASA@chiefind.com
- **ENVIRONMENTAL PRODUCTS**
Grand Island, NE
PH: 308-381-0585
environmentalproducts.chiefind.com
- » **CHIEF BUILDINGS**
Grand Island, NE
Rensselaer, IN
PH: 308-389-7281
chiefbuildings.com
Engineering Office
Lincoln, NE
402-323-5600
- **ARROWHEAD STEEL**
Grand Island, NE
PH: 308-385-4699
arrowheadsteelfab.com
- » **BONNAVILLA**
Aurora, NE
PH: 402-694-5250
bonnavilla.com
- » **EAGLE CREST HOMES**
Grand Island, NE
PH: 308-382-3866
eaglecresthomes.com
- » **CHIEF CONSTRUCTION**
Grand Island, Kearney & Lincoln, NE
PH: 308-389-7222
chiefconstruction.build
- **HEARTLAND ELECTRIC**
Grand Island, NE
PH: 308-385-4600
heartlandelect.com
- **CHIEF DEVELOPMENT**
Grand Island, NE
PH: 308-389-7222
chiefdevelopment.build
- » **CHIEF FABRICATION**
Grand Island, NE
PH: 308-389-2100
chief fabrication.com
- **PIVOT WALKER**
Grand Island, NE
PH: 308-389-2100
pivotwalker.com
- **POWDER COAT FACILITY**
Grand Island, NE
PH: 308-389-2100
chief fabrication.com

SUBSIDIARIES

- » **CHIEF CARRIERS**
Grand Island, NE
PH: 308-389-7250
chiefcarriers.com
- » **CHIEF ETHANOL**
Hastings & Lexington, NE
Hastings PH: 402-463-6885
Lexington PH: 308-217-7100
chiefethanol.com
- » **CHIEF INDUSTRIES, UK LTD**
Maldon, Essex, England
PH: 441-621-868944
chief.co.uk
- » **PHENIX-ROUSIES INDUSTRIES, S.A.**
Rousies, France
PH: 33-32769-4242
silos-phenix.com

Trusted. Tested. True.®

For more information about Chief Industries, Inc., please contact us today.
3942 West Old Highway 30 • PO Box 2078 • Grand Island, NE 68802-2078
Phone: 308-389-7200 • chiefind.com



CHIEF 
INDUSTRIES

Trusted. Tested. True.®

For more information about Chief Industries, Inc., please contact us today.
3942 West Old Highway 30 • PO Box 2078 • Grand Island, NE 68802-2078
Phone: 308-389-7200 • chiefind.com